



Dreamgirl[®]

正規販売代理店

Lady Cat

by Cat Fish Club

<http://www.ladycat.com>

service@ladycat.com

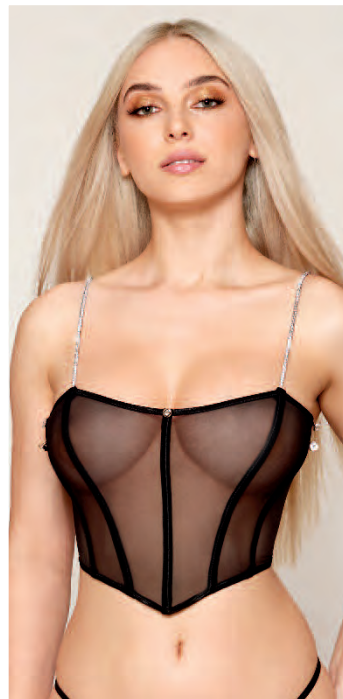
TEL 0798-31-7830

2023/2024 ————— Fall / Holiday / Valentine's Collection



STYLES 13036, 0467 & 13051 on cover

New



- Stretch mesh bustier with removable feather trim and G-string set
- Adjustable rhinestone cord shoulder straps
- Fully boned bodice with adjustable hook & eye back closure
- Removable feather neckline has elastic loops on rhinestone buttons and front snap
- Skirt and accessories not included

13036

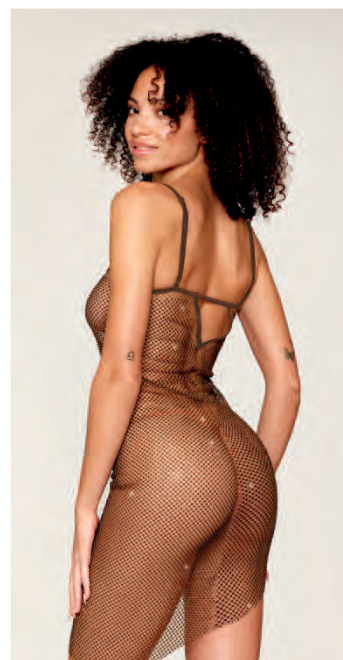
S, M, L, XL
Black



STYLE 13034



STYLE 13036 & 13034 worn as a skirt



- Rhinestone embellished fishnet chemise with an asymmetrical hemline
- Adjustable shoulder straps and hook & loop back closure
- May also be worn as a skirt
- Thong and accessories not included

13034

S, M, L, XL
Espresso



STYLE 13022X

New



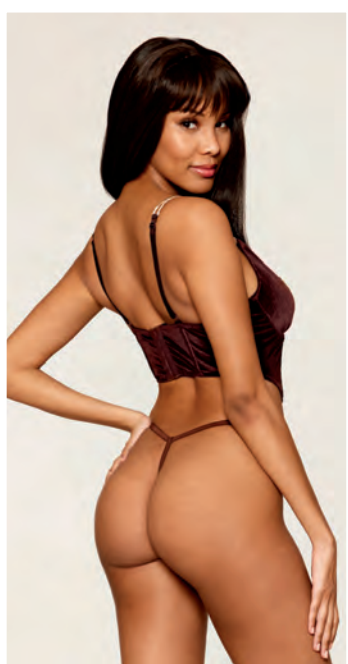
- Stretch velvet and embroidered band garter slip and G-string set
- Rhinestone cord shoulder straps and underwire cups
- Adjustable shoulder straps, hook & eye back closure, and attached/adjustable garters
- Shown with Style 0192/X thigh highs; sold separately
- Accessories not included

13022, 13022X

S, M, L, XL, 1X, 2X, 3X
Espresso



New

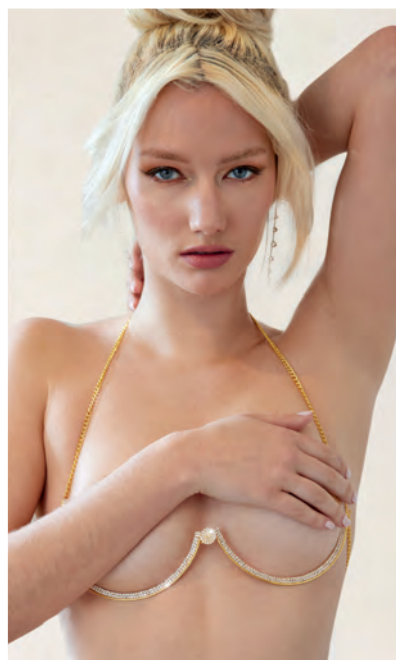


13021

S, M, L, XL
Espresso

- Stretch velvet and embroidered band bustier and G-string set
- Rhinestone cord straps, underwire cups, and fully boned bodice
- Adjustable shoulder straps and hook & eye back closure
- Jeans and accessories not included





- Delicate, gold-foil lace blouson teddy and rhinestone metal underwire bra set
- Plunging neckline teddy with eyelash lace trim, V-string, and open back with adjustable elastic straps
- Underwire, open cup, halter metal bra with chain straps and adjustable jewelry clasp closures
- Thong and accessories not included

13037
S, M, L, XL
Espresso





STYLE 13029



- Liquid shine slinky fabric cowl neck camisole, G-string, and rhinestone metal underwire bra set
- Underwire, open cup, halter metal bra with chain straps and adjustable jewelry clasp closures
- G-string with clear elastic trim
- Shown with Style 0367 pantyhose; sold separately
- Jacket and accessories not included

13029

S, M, L, XL
Silver





STYLES 13029, 0367 & 13106

New



- Silver chainmail halter camisole with chain accents
- Plunging neckline with handkerchief hem and open back
- Adjustable chain straps with jewelry clasp closures
- Shown with Style 0367 pantyhose; sold separately
- Skirt and accessories not included

13106

S/M, L/XL
Silver



New



13044

S, M, L, XL
Silver

- Silver mini-pleated mesh babydoll and G-string set
- Foam-lined underwire cups, adjustable straps, and hook & eye back closure
- Stretch mesh bodice and matching G-string
- Shrug and accessories not included



New



- Silver mini-pleated mesh bra, garter belt, and G-string set
- Unlined underwire cups with adjustable straps and hook & eye back closure
- Playful garter belt with silver mini-pleated mesh skirt and adjustable garters
- Matching G-string
- Shown with Style 0192 thigh highs; sold separately
- Shrug and accessories not included

13045

S, M, L, XL
Silver





STYLE 13039

New



- Multicolor lurex lace longline bra and garter G-string set
- Foam-lined underwire lace cups with black and gold ball chain fringe and adjustable straps
- Adjustable hook & eye back closure
- Multicolor lurex lace G-string with removable/adjustable garters
- Shown with Style 0007 thigh highs; sold separately
- Skirt and accessories not included

13039

S, M, L, XL
Black





STYLES 13041 & 0338



New



- Stretch lace halter neck teddy with keyhole neckline
- Open back with rhinestone and ball chain trim and hook closure
- Skirt and accessories not included

13041

S, M, L, XL
Black





STYLE 13024X

New



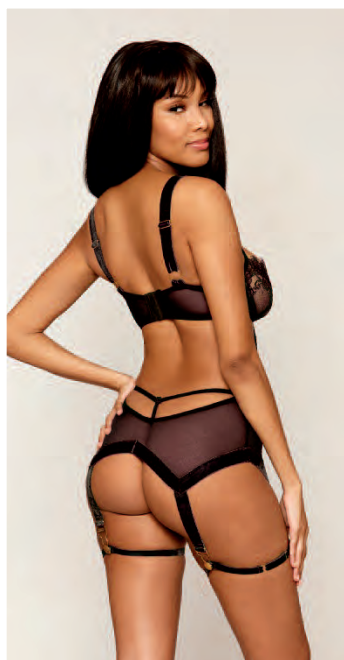
- Velvet and gold lurex lace bustier and G-string set
- Foam-lined half-moon cups and eyelash lurex lace inner cups with adjustable halter chain straps and a jewelry clasp closure
- Adjustable wide velvet straps with gold buckle loop connectors and hook & eye back closure
- Removable gold multi-chain and tassel accessory
- Matching lurex lace G-string
- Skirt and accessories not included

13024, 13024X

S, M, L, XL, 1X, 2X, 3X
Black



New



13025

S, M, L, XL
Black



- Gold lurex lace and mesh garter slip and G-string set
- Underwire lace cups with strappy details, wide velvet shoulder straps, and buckle loop connectors
- Removable/adjustable leg garters
- Matching mesh G-string
- Accessories not included



- Floral lace lingerie romper and high-waisted thong set
- Fully boned lace bodice with mesh back and adjustable hook & eye closure
- Wide-leg silhouette with eyelash lace hem
- Matching high-waisted thong
- Shrug not included

13052

S, M, L, XL
Black



New



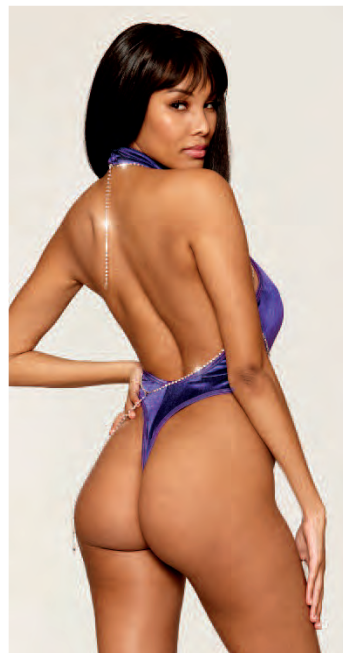
13051, 13051X

S, M, L, XL, 1X, 2X, 3X
Black, Violet

- Floral lace and stretch velvet slip chemise
- Stretch lace bodice with rhinestone pendant, underwire cups, velvet accents, and adjustable wide velvet straps
- Adjustable hook & eye back closure
- Eyelash border lace midi-skirt with functional side lace-ups
- Thong and accessories not included



New



- Stretch velvet teddy and body jewelry harness set
- Halter neck teddy with high-cut leg openings
- Thong back with snap crotch
- Adjustable rhinestone body jewelry harness with jewelry clasp closures
- Skirt and accessories not included

13148

S, M, L, XL
Violet



New

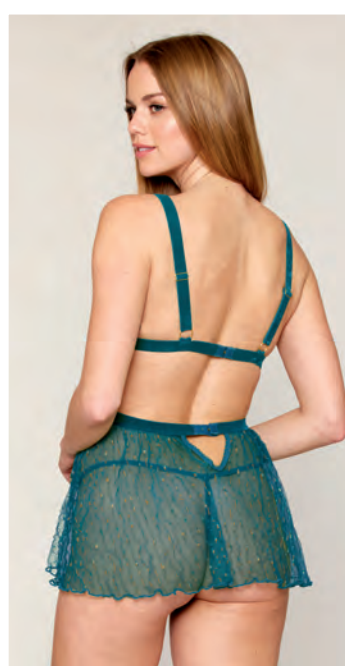


13046

S, M, L, XL
Peacock



- Eyelash lace and lurex mesh underwire bra with flared sleeves and high-waisted thong set
- Foam-lined underwire cups with lurex mesh and eyelash lace details
- Functional front satin tie, back hook closures, and velvet elastic straps and trim
- Matching high-waisted thong
- Stockings and accessories not included



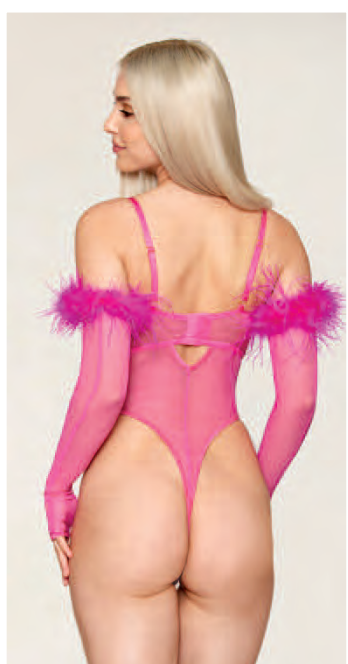
- Eyelash lace and lurex mesh babydoll and matching G-string set
- Triangle soft cups with wide adjustable velvet straps
- Hook & eye back closures
- Front cut-outs and flared skirt
- Shrug and accessories not included

13047

S, M, L, XL
Peacock



New

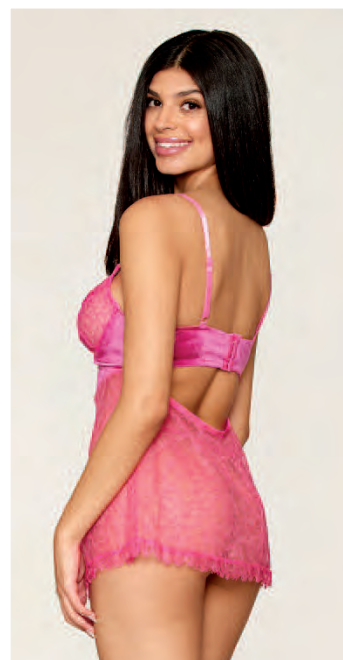


13031

S, M, L, XL
Peony



- Stretch mesh with sequin cups teddy and gloves set
- Foam-lined shaped cups with elastic support, sheer nude mesh inset, adjustable straps, and hook & eye back closure
- High-cut leg openings with thong back and snap crotch
- Matching opera-length fingerless gloves with removable feather trim; removable with buttons and elastic loops
- Skirt and accessories not included



- Delicate corded eyelash lace and stretch velvet babydoll and G-string set
- Underwire cups with rhinestone chain link trim, adjustable straps, and hook & eye back closure
- Velvet bodice with boning detail
- Matching stretch velvet G-string
- Accessories not included

13023, 13023X

S, M, L, XL, 1X, 2X, 3X
Peony





STYLE 13038

New



- Delicate corded lace bra and slip skirt set with rhinestone and ball chain fringe trim
- Halter underwire bra with adjustable hook & eye back closures
- Midi-length slip skirt with hook & loop closure and back hem slit detail
- Thong and accessories not included

13038

S, M, L, XL
Ruby





STYLES 13035 & 13035X





- Gold-foiled stretch mesh teddy with rhinestone detailing and heat-sealed edges
- Floating underwire cups and bodice boning details
- Adjustable shoulder straps, hook & eye back closure, and thong back with snap crotch
- Shrug and accessories not included

13035, 13035X

S, M, L, XL, 1X, 2X, 3X
Ruby





STYLES 13102, 13054 & 13056X



- Stretch velvet and marabou feather trim Santa bustier, thong, and gloves set
- Fully boned bustier with strapless neckline, removable/adjustable clear shoulder straps, and hook & eye back closure
- High-rise thong and opera-length fingerless gloves
- Marabou trim is removable with button and elastic loop clasp
- Skirt and accessories not included

New

13054

S, M, L, XL
Ruby



New

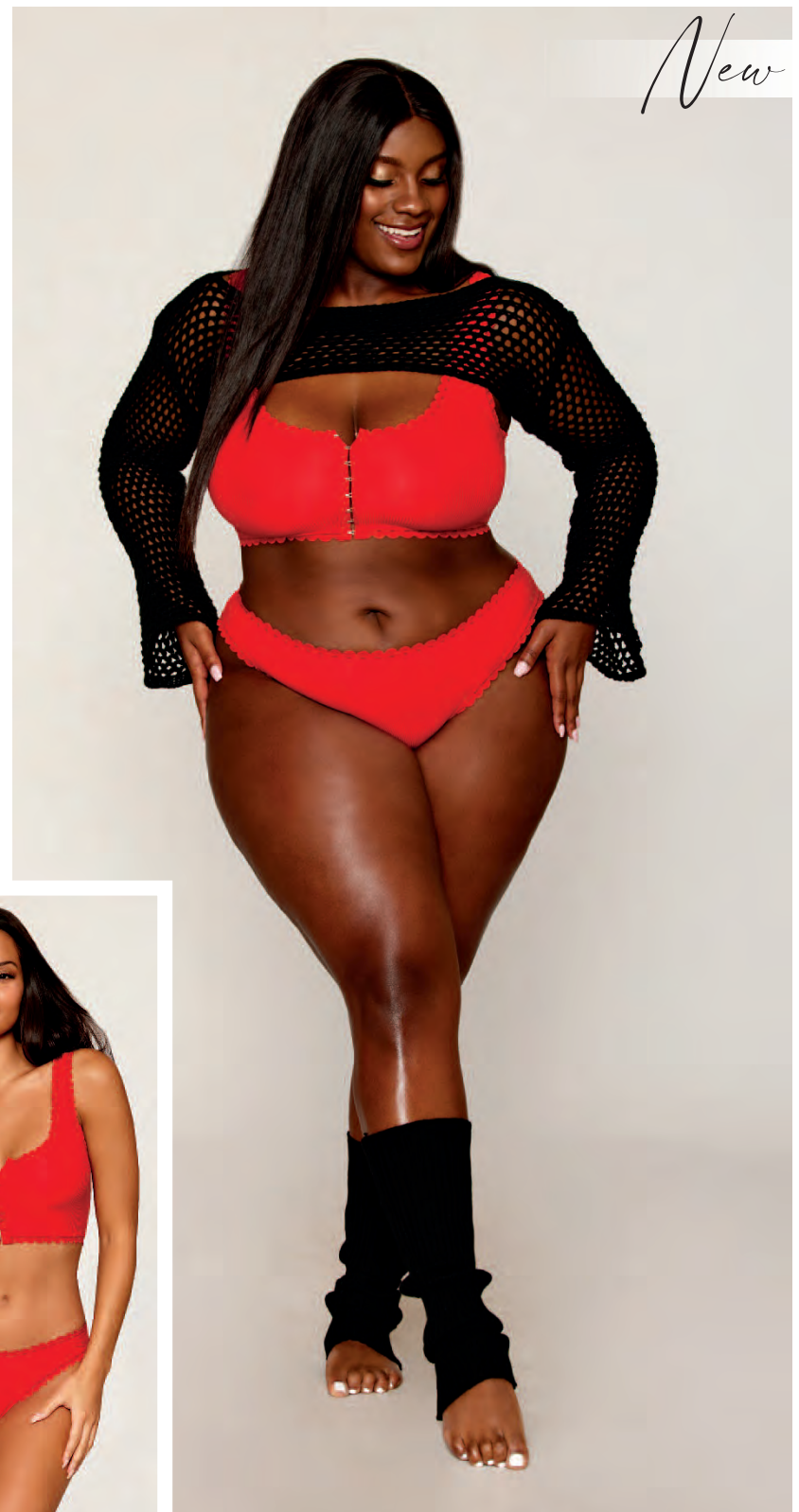


13056, 13056X

S, M, L, XL, 1X, 2X, 3X
Ruby



- Sequined mesh and faux-fur trimmed Santa teddy and garter belt set with rhinestone studded straps and garters
- Foam-lined underwire cups with adjustable shoulder straps and hook & eye back closure
- Thong back with snap crotch
- Adjustable elastic garter belt with attached/adjustable garters and attached faux-fur leg garters
- Jacket and accessories not included



- Rib-knit sleepwear bralette and panty set with ruffled lace elastic trim
- Long-line bralette with hook & eye front detail
- Sequined "Naughty" lettering detail on back of panty
- Shrug and accessories not included

13058, 13058X

S, M, L, XL, 1X, 2X, 3X
Ruby





STYLE 13068

New



- Flocked heart mesh and eyelash lace robe, bralette, and G-string set
- Flared sleeve robe with attached satin belt
- Soft triangle cup bralette with adjustable straps and hook closure on the back
- Matching G-string
- Accessories not included

13068

S, M, L, XL
Peony



New

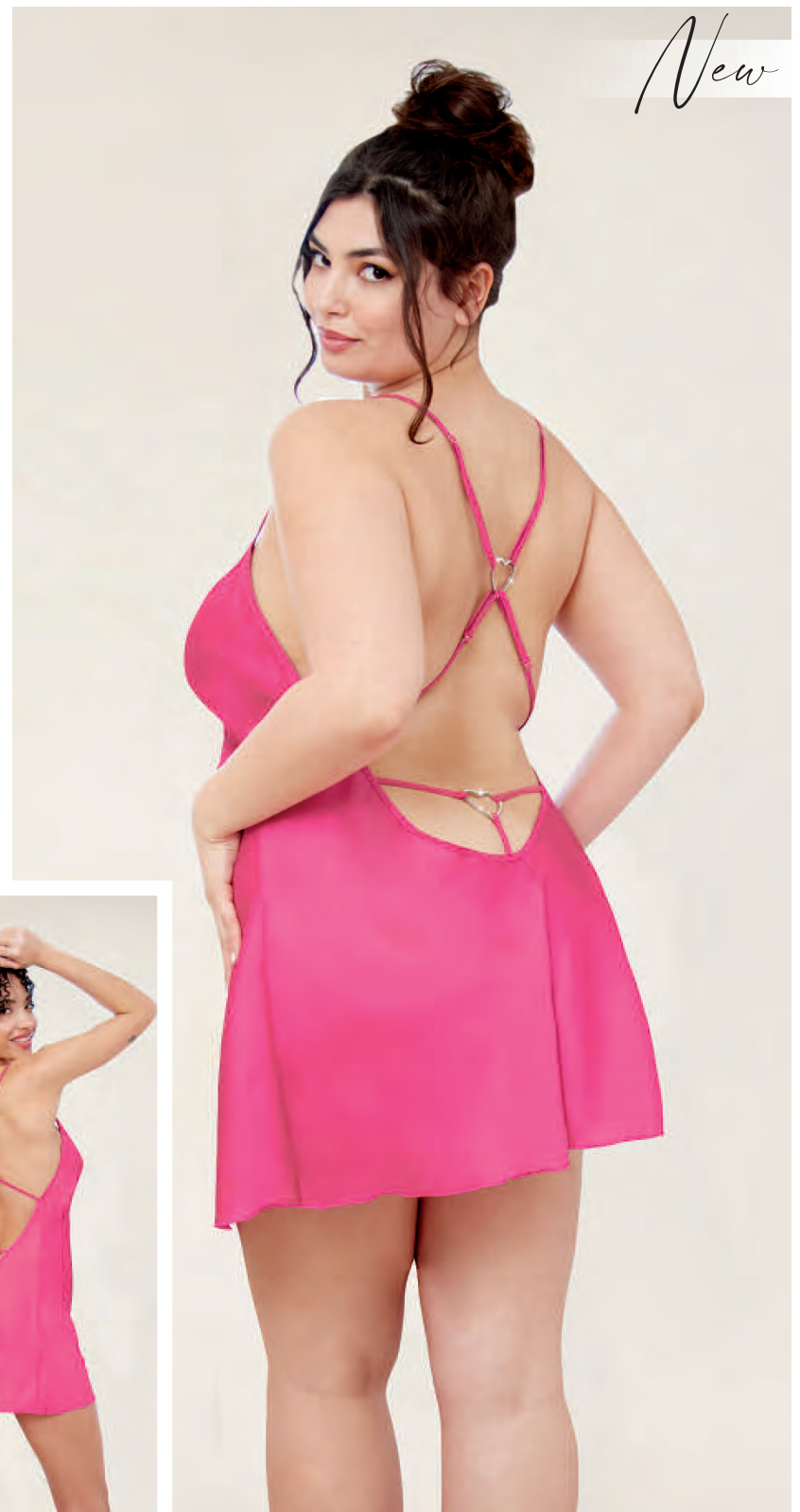
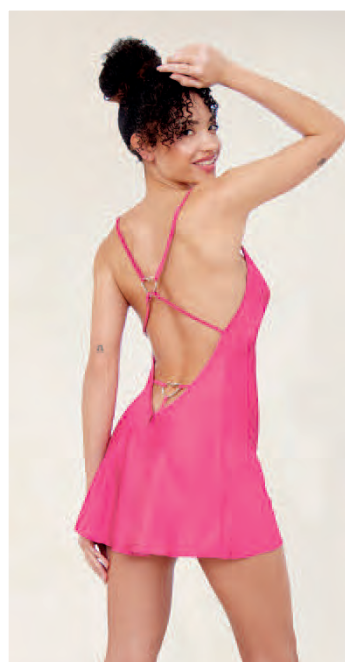


13064

S, M, L, XL
Peony



- Heart embroidery and polka dot mesh garter bustier and G-string set
- Underwire cups with adjustable straps and gold, heart-shaped sliders
- Fixed satin lace-up front, ruffled sides, and hook & eye back closure
- Matching G-string with gold heart connector on the back
- Shown with Style 0007 thigh highs; sold separately
- Skirt and accessories not included



New

- Soft satin chemise and matching G-string set
- Low-cut back chemise with adjustable straps and rhinestone heart connector
- Matching G-string with rhinestone heart connector on the back
- Shrug and accessories not included

13067, 13067X

S, M, L, XL, 1X, 2X, 3X
Peony





STYLE 13059X

New



- Flocked heart stretch mesh and stretch vinyl halter teddy
- Underwire cups, fully boned bodice, and adjustable hook & eye back closures
- G-string back with gold heart accent
- Skirt and accessories not included

13059, 13059X

S, M, L, XL, 1X, 2X, 3X
Peony





STYLE 13060

New

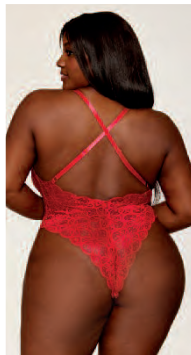


- Stretch velvet halter neck teddy
- Heart-shaped cut-out on the front with sparkly rhinestone fringe trim
- High-cut leg openings with thong back and snap crotch
- Shrug, skirt, and accessories not included

13060

S, M, L, XL
Ruby





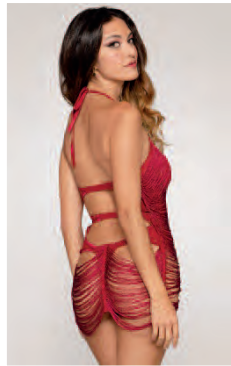
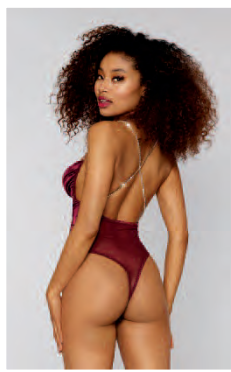
10996, 10996X

S, M, L, XL, 1X, 2X, 3X

Black, Rouge, Vintage Rose

- Mosaic stretch lace teddy with sheer mesh tie-front maxi skirt
- Open G-string back
- Adjustable crisscross straps
- Plus garment modified with a higher neckline and full lace back for additional coverage





- Satin cowl neck teddy with stretch mesh back, high-cut leg openings, and thong back with snap crotch
- Snag-free, removable rhinestone straps
- Clear removable shoulder straps included

12693

S, M, L, XL
Burgundy



- Stretch spandex mesh and draped fringe halter teddy
- Elastic strappy back detail and halter neck tie closure
- Snap crotch

8603

S, M, L, XL
Garnet



- Novelty stretch mesh and delicate venise embroidery babydoll and matching G-string set
- Triangle soft cups with adjustable halter T-back strap
- Flyaway, open back skirt
- Accessories not included

12769, 12769X

S, M, L, XL, 1X, 2X, 3X
Burgundy





10460, 10460X

S, M, L, XL, 1X, 2X, 3X
Garnet

- Lace halter gown with matching G-string
- Plunging neckline, high side slit, low back, scalloped-edge trim, and satin waist detail
- Adjustable tie-back closures





- Eyelash lace and stretch mesh babydoll with matching mesh G-string
- Rhinestone-studded elastic strappy neckline and foam-lined underwire lace cups
- Stretch mesh skirt with lace trim hem
- Adjustable shoulder straps with hook & eye back closure

12378, 12378X

S, M, L, XL, 1X, 2X, 3X
Eggplant, Garnet



12467, 12467X

S, M, L, XL, 1X, 2X, 3X
Plum



- Eyelash lace and stretch mesh babydoll and thong set with black cording accents
- Underwire cups with strappy neckline and gold ring details
- Adjustable shoulder straps with hook & eye back closure

11815

S, M, L, XL
Eggplant



- Lace romper with eyelash lace trim
- Adjustable halter straps
- Open back with adjustable ribbon tie closure
- Flirty, high-cut leg with snap crotch





- Stretch mesh and lace babydoll with matching G-string
- Underwire push-up cups with adjustable straps and hook & eye back closure
- Stretch satin with lace overlay detail
- Plus garment modified by removing push-up cups

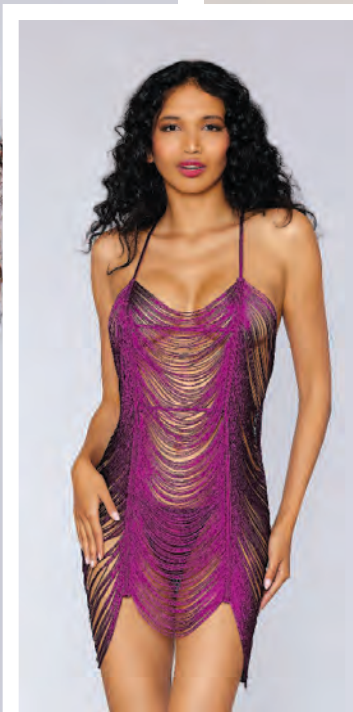
11020, 11020X

S, M, L, XL, 1X, 2X, 3X
Plum, Ruby





10102
S, M, L, XL
Midnight, Mulberry



10102X
1X, 2X, 3X
Mulberry

- Delicate, draped fringe chemise and matching mesh G-string
- Halter T-back with adjustable straps





- Fishnet and lace flyaway front babydoll and G-string set
- Plunge bra neckline, molded and lined underwire cups, and wide, scalloped lace underbust detail
- Adjustable double shoulder straps and hook & eye keyhole back closure
- Matching lace double strap G-string



12430

S, M, L, XL
Nocturnal



- Fishnet and lace bra and G-string set
- Plunge bra neckline, molded and lined underwire cups, and wide scalloped lace underbust detail
- Adjustable double shoulder straps and hook & eye back closure
- Matching double strap panty with G-string back

12431

S, M, L, XL
Nocturnal





12765

S, M, L, XL
Black



- Stretch lace and fishnet garter teddy
- Architectural shaped cups with boning support and large, exposed metal "V" wire detail
- Adjustable shoulder straps with matching "V" hardware detail, adjustable hook & eye back closure, adjustable back waist elastic, and removable/adjustable garters
- Shown with Style 0338 thigh highs; sold separately
- Accessories not included



12764

S, M, L, XL
Black



- Stretch lace and fishnet garter slip and G-string set
- Architectural shaped cups with boning support and large, exposed metal "V" wire detail
- Adjustable shoulder straps with matching "V" hardware detail, adjustable hook & eye back closure, adjustable back waist elastic, and removable/adjustable garters
- Shown with Style 0338 thigh highs; sold separately



- Stretch fishnet bra and slip skirt set
- Underwire halter bra with adjustable hook & eye back closures and large, exposed metal "V" wire detail
- Matching midi-length slip skirt with 2-way gold metal zipper
- G-string and gloves not included

12770, 12770X

S, M, L, XL, 1X, 2X, 3X
Black





12889, 12889X

S, M, L, XL, 1X, 2X, 3X
Black/Animal



- Allover leopard lace and fishnet bustier and matching G-string set
- Boned bodice with fishnet inserts, satin seaming details, adjustable double shoulder straps, and lace-up back
- Underwire cups with shiny satin and leopard lace combination, fancy gold hardware, and strappy details
- Shown with Style 0432/X thigh highs; sold separately
- Accessories not included

12651

S, M, L, XL
Black



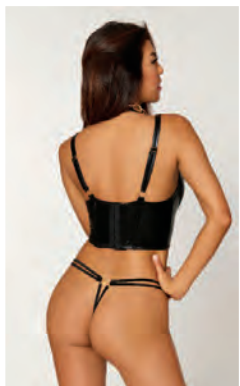
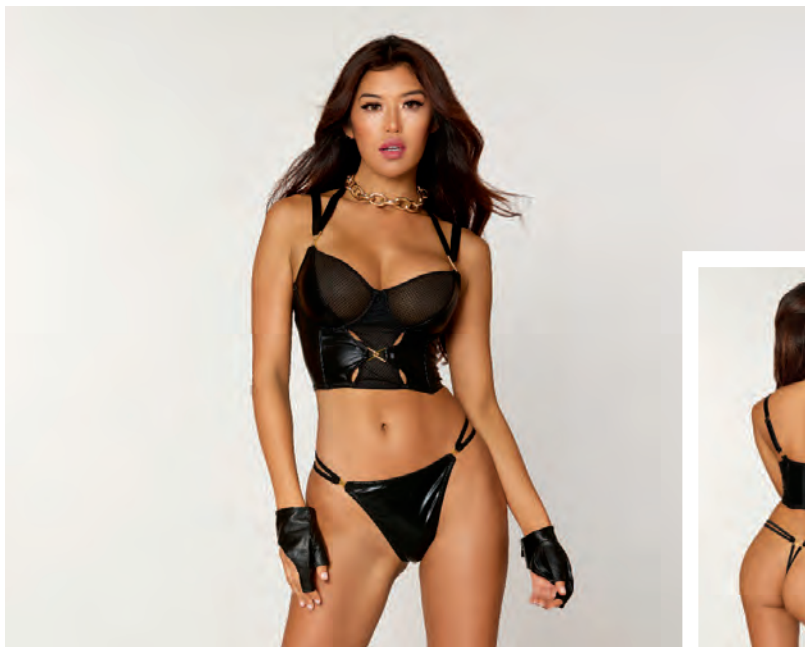
- Black rhinestone stretch fishnet halter teddy with eyelash lace trim details
- Hook & eye back neck closure, adjustable back elastic strap
- Lace thong back
- Accessories not included



- Stretch faux-leather and eyelash lace bra and garter panty set
- Bra has functional front zipper, boning for support, eyelash lace, and adjustable shoulder straps
- High-waisted panty with functional front zipper, removable/adjustable garters, and stretch eyelash lace
- Shown with Style 0001/X thigh highs; sold separately
- Accessories not included

12887, 12887X

S, M, L, XL, 1X, 2X, 3X
Black



- Stretch faux-leather and textured stretch mesh cropped bustier and strappy G-string set with geometric gold hardware accents
- Underwire, double layer cups with adjustable shoulder and halter straps
- Bodice has keyhole details, support boning, and adjustable hook & eye back closure
- Accessories not included

12761, 12761X

S, M, L, XL, 1X, 2X, 3X
Black





12783, 12783X

S, M, L, XL, 1X, 2X, 3X
Pink/Black

- Diamond stretch mesh garter slip and G-string set
- Eyelash lace trim, delicate satin bows, underwire cups with elastic ric-rac trim, and a garter-shaped hem with ruffled lace
- Adjustable hook & eye back closure, adjustable shoulder straps, and attached/adjustable garters
- Shown with Style 0192/X thigh highs; sold separately
- Accessories not included

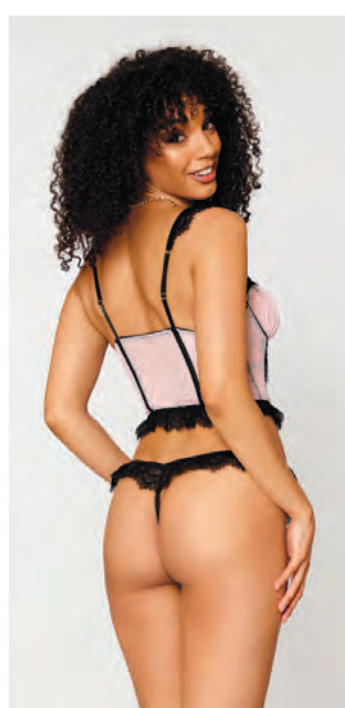




- Diamond stretch mesh cropped bustier and G-string set
- Eyelash lace trim, ruffled lace hem, delicate bow details, underwire cups, and a fully boned bodice
- Front closure underwire cups, front hook & eye bodice opening, and adjustable ruffled lace shoulder straps

12784

S, M, L, XL
Pink/Black

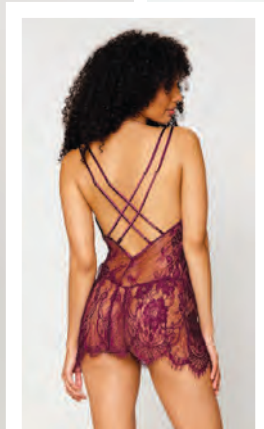


- Stretch lace and stretch mesh babydoll set with triple gold ring accent and matching G-string
- Stretch satin underwire, foam-lined cups with lace overlay detail
- Stretch mesh skirt with lace trim hem
- Adjustable shoulder straps with hook & eye back closure

12386

S, M, L, XL
Pink Champagne

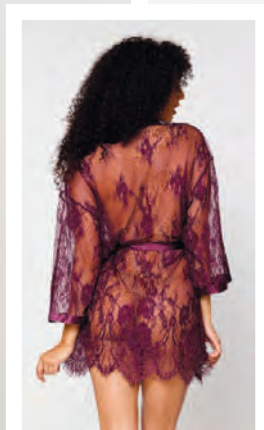




12787, 12787X

S, M, L, XL, 1X, 2X, 3X
Burgundy

- Eyelash lace chemise with wide border pattern on scallop hem
- Double layer satin cups with double, adjustable crisscross shoulder straps
- Matching satin G-string included



12788, 12788X

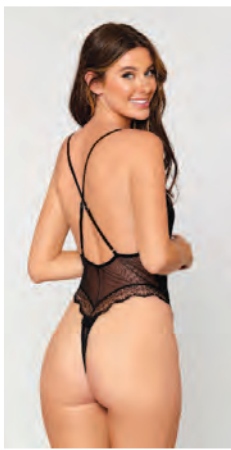
S, M, L, XL, 1X, 2X, 3X
Burgundy

- Eyelash lace robe with wide border pattern on scallop hem
- Satin band details and attached belt closure
- Thong not included





- 3-piece satin robe, bralette, and panty set with eyelash lace trim
- Robe with wide sleeve detail and attached belt
- Bralette with adjustable shoulder straps and hook & loop closure
- Panty with soft elastic waist and high-cut leg openings
- Accessories not included



12789

S, M, L, XL
Nocturnal

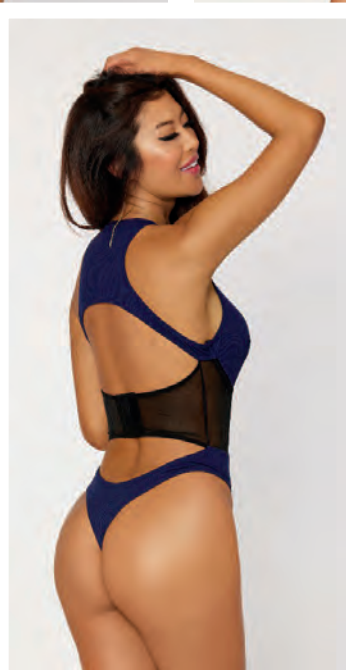


- Stretch mesh teddy and robe set with lace trim details
- Teddy features adjustable crisscross shoulder straps and thong back
- Robe comes with a matching belt
- Accessories not included

12652, 12652X

S, M, L, XL, 1X, 2X, 3X
Black





12798, 12798X

S, M, L, XL, 1X, 2X, 3X
Nocturnal/Black



- Rib-knit sleepwear teddy with high neck and racerback styling detail
- Attached, fully boned, mesh waist corset detail with adjustable hook & eye back closure
- Open back detail
- Thong back with snap crotch
- Knee socks not included



- Rib-knit sleepwear bralette and short set with lace inset details
- Long-line bralette with self-bias and adjustable shoulder straps
- Matching high-waisted short with soft waistband, high-cut leg openings, and lace side details



12791

S, M, L, XL
Burgundy



- Rib-knit sleepwear chemise with lace inset details
- Self-bias, adjustable, crisscross shoulder straps
- Accessories not included

12790, 12790X

S, M, L, XL, 1X, 2X, 3X
Burgundy



DIAMOND



STYLES 13084 & 0250

New



- Floral lace and mesh babydoll and G-string set
- Triangle soft cups with gold chain accents, halter neck tie, and tie-back closure
- Mesh skirt connected to the top with gold chains
- Matching lace G-string
- Shrug and accessories not included

13084

O/S
Violet



New



13072

O/S
Violet



- Stretch velvet teddy and separate collar with a draping chain detail
- Strapless neckline, open back with adjustable elastic, and thong back
- Separate collar has hook & eye closure and a draping, multi-strand chain
- Shrug and accessories not included

New



- Metallic fishnet seamless teddy and matching shrug with stretch lace trim
- Strapless teddy with thong back
- Separate long-sleeved shrug with snap neck closure, attached fingered gloves, and ribbon wrist restraints
- Skirt and accessories not included

13073

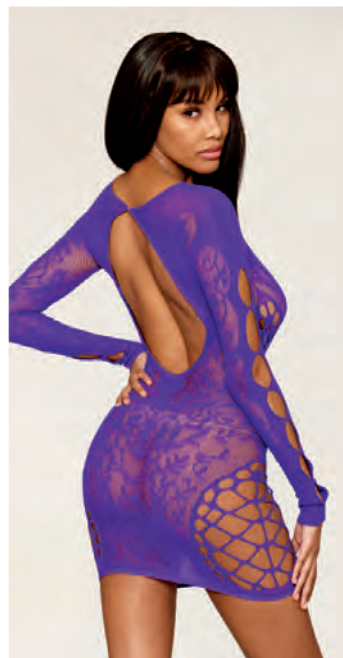
O/S
Violet





STYLE 13079X

New



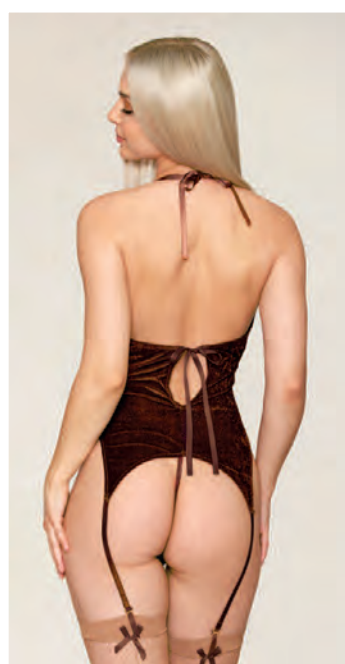
- Short floral lace pattern chemise
- Keyhole cut-outs with gold chain accents
- Open back with hook closure
- Thong and accessories not included

13079, 13079X

O/S, O/S Queen
Violet



New



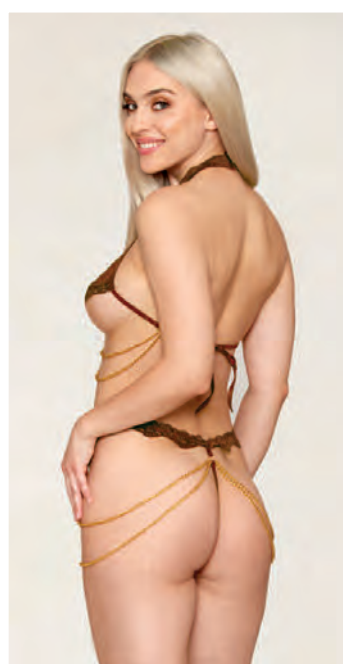
13076, 13076X

O/S, O/S Queen
Espresso



- Stretch velvet and gold-foil lace short garter slip and G-string set
- Built-in triangle soft cup bralette with rhinestone trim and adjustable back ties
- Halter neckline, ruched front detail, and attached elastic garters
- Shown with Style 0192/X thigh highs; sold separately
- Accessories not included

New



- Iridescent gold-corded stretch lace halter bralette and G-string set
- Peek-a-boo underbust detail with gold ring and draping chain details
- Adjustable hook & eye neck clasp and tie-back closure
- Matching G-string with a gold ring and draping chains
- Shrug and accessories not included

13082

O/S
Espresso



New



13088, 13088X

O/S, O/S Queen
Ruby



- Metallic, pleated, open cup babydoll with functional satin bow 2-piece set
- Elastic open cups with adjustable halter ties and flyaway babydoll skirt
- Matching satin open-crotch thong
- Pasties and accessories not included

New



- Chainette fringe bralette, garter belt, and G-string set
- Triangle soft cup halter bralette with hook & eye closure
- Fringe skirt garter belt with adjustable garters and waist elastic
- Matching G-string
- Stockings and accessories not included

13042

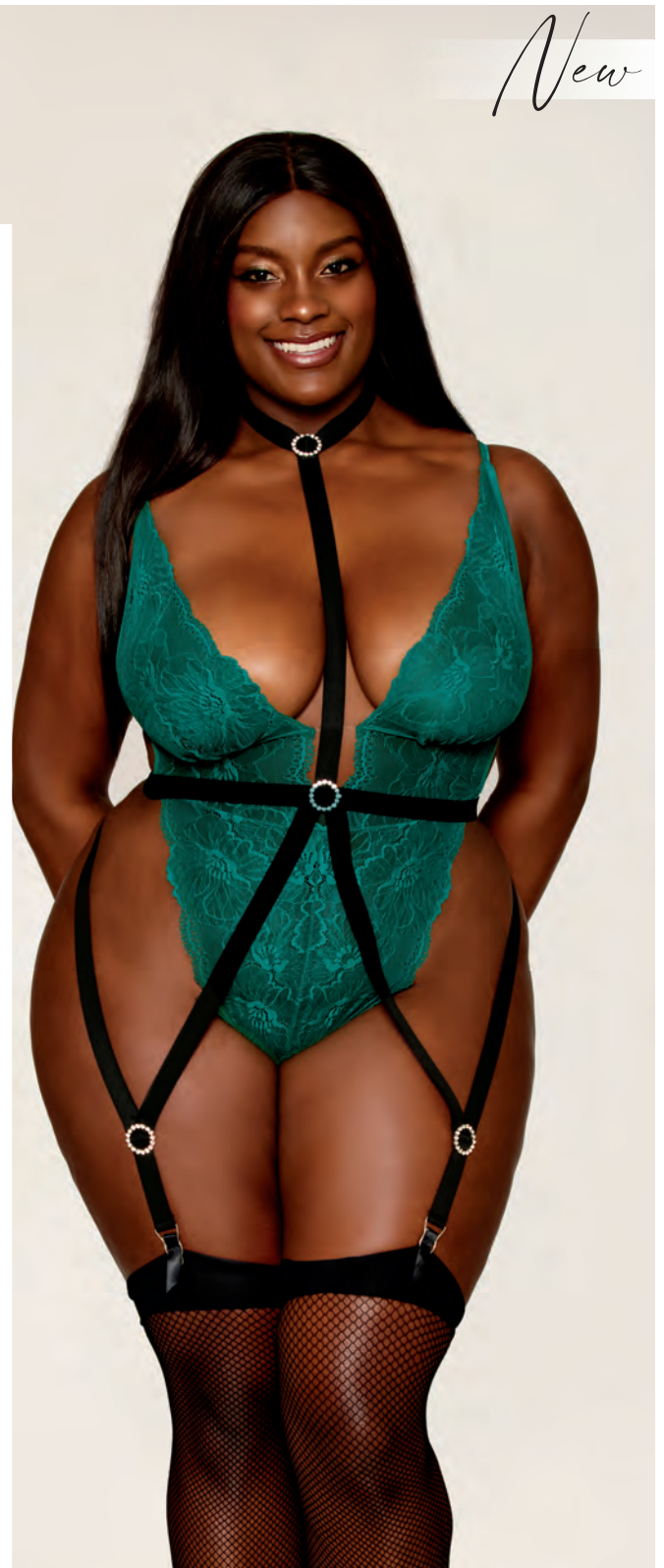
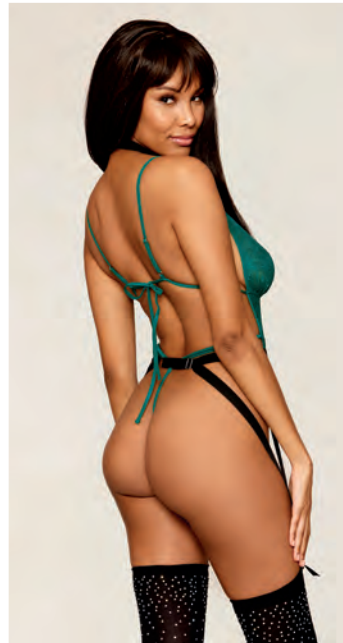
O/S
Ruby





STYLE 13074

New



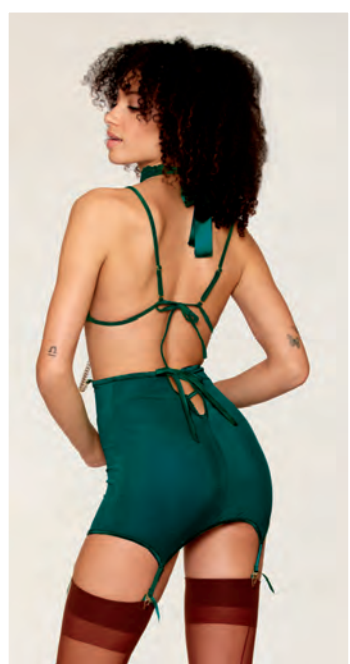
- Stretch lace teddy and elastic garter belt harness set
- Triangle soft cups with a plunging neckline, clear elastic cup support, adjustable straps, and tie-back closures
- Open back with adjustable hip straps and G-string back
- Separate elastic harness with rhinestone ring details, hook & loop neck closure, adjustable waist elastic, and attached garters
- Shown with Style 0459/0192X thigh highs; sold separately
- Accessories not included

13074, 13074X

O/S, O/S Queen
Peacock/Black



New



13080

O/S
Peacock



- Gold-corded stretch lace and stretch mesh 4-piece set
- Triangle soft cup bralette with adjustable straps and tie-back closures
- High-waisted garter skirt with tie-back waist closure and attached elastic garters
- Lace collar with draping gold rhinestone chains that clip to skirt waistband
- Matching mesh G-string
- Shown with Style 0007 thigh highs; sold separately
- Accessories not included



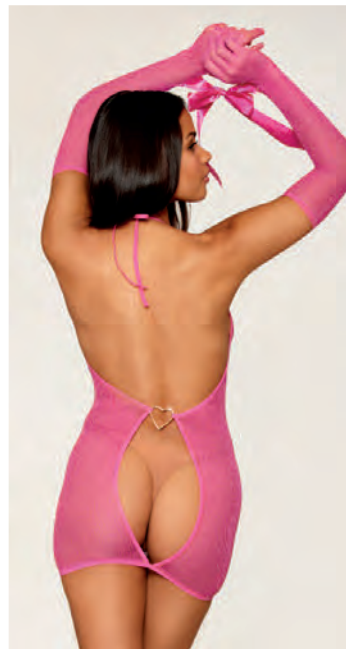
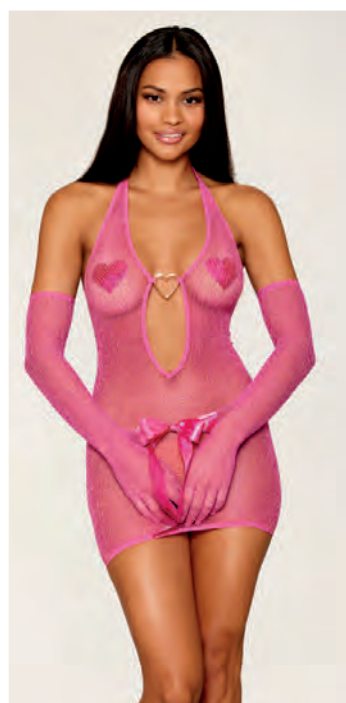
- Multicolored heart embroidered bustier, G-string, and wrist restraints set
- Triangle soft cups with adjustable straps and back tie
- Functional front lace-up mid-section with attached/adjustable garters
- Matching G-string with lace-up back
- Skirt, stockings, and accessories not included

13092

O/S
Peony



New



13094, 13094X

O/S, O/S Queen
Peony



- Metallic fishnet seamless chemise and matching glove restraints set
- Plunging neckline with gold heart accent and adjustable halter neck ties
- Open back with gold heart accent
- Opera-length gloves with ribbon wrist restraint ties
- Thong, pasties, and accessories not included



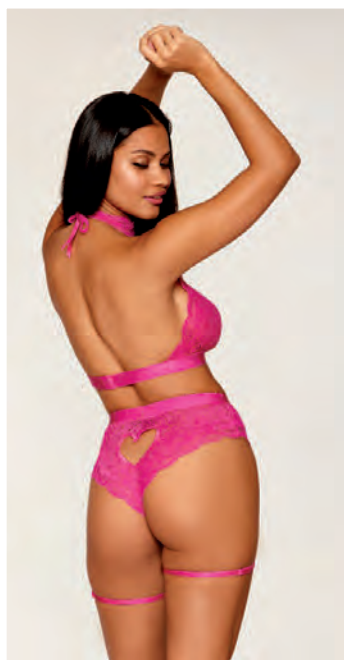
- Metallic sparkle mesh and stretch vinyl babydoll and G-string set
- Triangle soft cups with metal heart chain halter straps and adjustable tie-back closures
- Attached flyaway mesh skirt with heart ring accent and open sides
- Accessories not included

13100, 13100X

O/S, O/S Queen
Peony



New

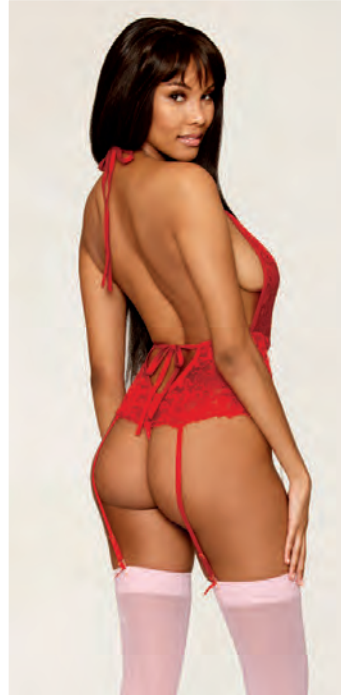
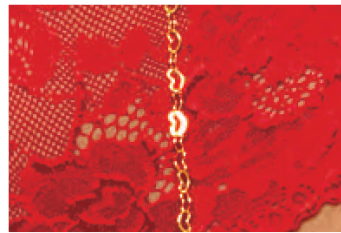


13096

O/S
Peony



- Stretch lace bralette and garter panty set
- Halter bralette with heart-shaped cut-out and adjustable hook & slider back closure
- High-waisted garter panty with heart-shaped cut-out on the back
- Attached/adjustable garters with gold heart accents and adjustable leg garters
- Accessories not included



New

- Stretch lace garter teddy with metal heart chain details
- Adjustable halter neck ties and adjustable tie-back waist closure
- Open crotch and G-string back
- Heart chain attached front garters and attached/adjustable elastic back garters
- Shown with Style 0001X thigh highs; sold separately
- Stockings and accessories not included

13089, 13089X

O/S, O/S Queen
Ruby



New



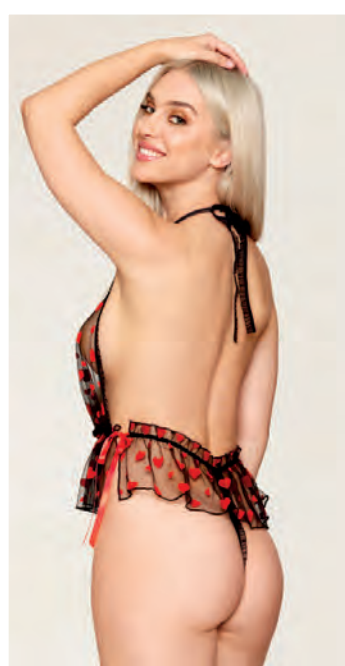
13097

O/S
Ruby



- Heart embroidered lace camisole and G-string set
- Keyhole and Chainette fringe trim halter camisole with adjustable tie closures
- Matching side tie G-string
- Stockings and accessories not included

New



- Flocked heart mesh teddy with gold heart details on straps
- Halter neck with adjustable neck ties
- Ruffled waist with adjustable ribbon side ties and G-string back
- Shrug and accessories not included

13091

O/S
Black/Ruby





STYLE 13102

New



- Seamless fishnet and feather trim Santa two-piece garter set
- Off-the-shoulder bralette with keyhole detail and attached long-sleeve gloves with fingers
- Matching garter skirt with adjustable garters
- Shown with Style 0459/0192X thigh highs; sold separately
- Thong not included

13102, 13102X

O/S, O/S Queen
"Santa Baby"





STYLE 0455

New



- Floral lace pattern bodystocking gown
- Keyhole cut-outs with O-ring accents
- Open back with hook closure, keyholes, and O-ring details
- Fit-and-flair fishnet hem
- Thong and accessories not included

0455, 0455X

O/S, O/S Queen
Ruby



New



0467, 0467X

O/S, O/S Queen
Black



- Geometric fence net pantyhose with rhinestone embellishment from ankle to thigh
- Smaller knitted toe reinforcement
- Thong not included



0459

O/S
Black



- Sheer thigh highs with iridescent rhinestone embellishment from top elastic to ankle

New

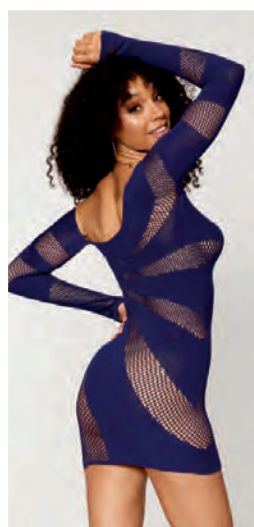


- High-waisted mesh and lace garter thong with satin ribbon back tie and keyhole
- Lace side detail
- Removable/adjustable garters
- Shown with Style 0007/0006 thigh highs; sold separately

1478

S, M, L, XL
Black, Ruby





12922, 12922X

O/S, O/S Queen
Nocturnal



- Seamless long-sleeve chemise with asymmetrical neckline
- Open fishnet and opaque stripes combination
- Thong not included



12125

O/S
Nocturnal



- Stretch scalloped lace and stretch fishnet collared merriwidow with matching G-string
- Stretch velvet elastic details
- Ribbon tie neck closure and back keyhole detail with waist adjustment
- Attached/adjustable garter
- Shown with Style 0007 thigh highs; sold separately



- Textured mesh and lace babydoll and matching lace G-string set
- Gold pendant and hardware
- Triangle soft cups with lace and textured mesh, picot elastic, and keyhole detail
- Adjustable shoulder straps

12910

O/S
Nocturnal



- 2-piece seamless leopard fishnet bralette and garter skirt set
- Bralette with keyhole neckline and attached long-sleeve gloves with built-in fingers
- Matching garter skirt with keyhole back detail and attached garters
- G-string not included
- Shown with Style 0001 thigh highs; sold separately

12808

O/S
Aubergine





12809, 12809X

O/S, O/S Queen
Burgundy



- Seamless zebra fishnet teddy and glove set
- High neck, front and back crisscross details, and adjustable shoulder straps
- Cheeky back fit
- Matching zebra fishnet opera-length gloves with knitted fingers
- Thong not included



- Stretch galloon lace teddy with peek-a-boo cut-outs
- Unlined triangle cups with crisscross adjustable shoulder straps
- Open crotch and G-string back

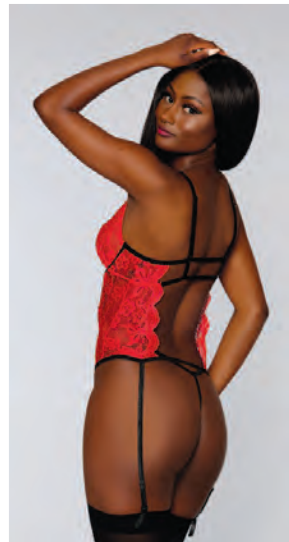
10551
O/S
Garnet, Mulberry



- Contemporary lace and mesh chemise with matching G-string
- Adjustable halter neck closure and center front O-ring detail
- Keyhole opening in back and adjustable elastic back straps

12446, 12446X
O/S, O/S Queen
Mulberry





11776, 11776X

O/S, O/S Queen
Garnet, Rose Pink



- 4-piece fishnet and lace choker, bralette, garter belt, and G-string set with stretch velvet trim accents
- Halter bralette with adjustable back closures
- Garter belt with attached/adjustable garters and adjustable waistband
- Matching fishnet G-string and velvet choker necklace
- Shown with Style 0001/0007X thigh highs; sold separately



10561

O/S
Lipstick Red



- Scalloped stretch galloon lace bustier with matching open-crotch G-string
- Underwire open cups, adjustable shoulder straps, strappy back detail, and attached/adjustable garters
- Shown with Style 0007 thigh highs; sold separately



- Stretch lace halter teddy with large heart cut-out back detail
- Plunging neckline and adjustable halter ties

8694

O/S
Black, Red, White



- Stretch lace and mesh babydoll with matching strappy stretch lace panty
- Halter neck styling with keyhole detail and tie-back closure

11503, 11503X

O/S, O/S Queen
Garnet





12512, 12512X

O/S, O/S Queen
Black



- Zebra patterned off-shoulder knit seamless chemise with long sleeves and thumbholes
- G-string not included

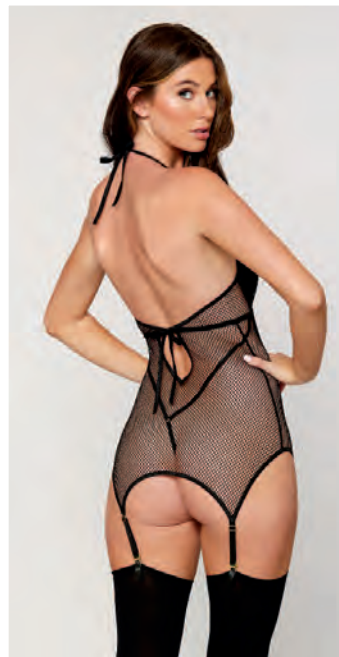


12444

O/S
Nude/Black



- Flocked cheetah print mesh teddy
- High-neck halter neckline and gold metal zipper with O-ring zipper pull
- Open back with adjustable elastic and G-string back



- Two-layer stretch fishnet garter slip with built-in, faux-vinyl teddy
- Halter, underwire, two-layer cups, adjustable tie-back closures
- Garter shaped hem with attached/adjustable garters
- Teddy has G-string back
- Stockings not included

12804, 12804X

O/S, O/S Queen
Black





1377

S, M, L, XL
Hot Pink/Black,
Red/Black

- Stretch mesh panty
- Lace ruffle trim
- Open back heart detail



1442, 1442X

S, M, L, XL, 1X, 2X, 3X
Black, Red, White

- Heart stretch lace panty
- Open-crotch
- Heart cut-out detail



1477, 1477X

S, M, L, XL, 1X, 2X, 3X
Ballet Pink, Black

- High-waisted lace panty with cut-out back detail and scalloped lace trim
- Cheeky-fit back





- Lace tanga open-crotch panty
- Elastic open back detail

1468, 1468X

S, M, L, XL, 1X, 2X, 3X
Black, Red



- Stretch lace, low-rise panty
- Open-crotch
- Ruffled back detail

1300, 1300X

S, M, L, 1X/2X, 3X/4X
Black, Hot Pink, Red



- Microfiber cheeky panty
- Cross-dyed lace back
- Satin bow trim

1380

S, M, L, X
Red/Black



- Stretch lace, cheeky hipster panty
- Scalloped lace trim
- Satin bow

1375

S, M, L, XL
Black, Hot Pink, Red, Turquoise





0417

O/S
Burgundy



- Leopard fishnet catsuit bodystocking and matching shrug set
- Scoop neckline with shoulder straps and footless bodystocking
- Separate long-sleeve shrug with built-in fingered gloves
- Thong not included



0423

O/S
Black



- Zebra fishnet 2-piece strappy bodystocking set
- Long-sleeve bralette with built-in fingered gloves, mock-turtleneck, and cropped length design with ring and strap detail
- Matching zebra fishnet footless leggings with ring and elastic strap detail
- Thong not included



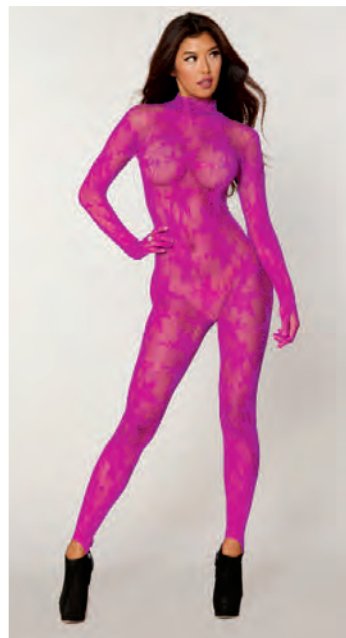


- Zebra fishnet teddy bodystocking with long sleeves, built-in fingered gloves, and keyhole open back detail
- Thong back
- Attached garters and matching thigh high stockings
- Thong and accessories not included

0420, 0420X

O/S, O/S Queen
Black



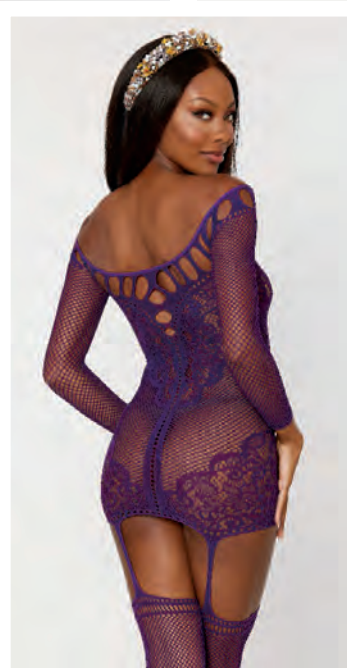


0416, 0416X

O/S, O/S Queen
Azalea



- Seamless floral knitted fishnet catsuit bodystocking
- Long sleeves with built-in gloves with fingers
- Stretch lace mock turtleneck with snap closure and open back detail
- Stirrup style foot opening
- Thong, waist corset, and accessories not included



- Fishnet and decorative scalloped lace garter dress with attached fishnet stockings
- Off-the-shoulder neckline with peek-a-boo detail
- Thong and accessories not included

0446, 0446X

O/S, O/S Queen
Aubergine





0035, 0035X

O/S, O/S Queen
Black, Red



- Semi-sheer halter garter dress with stretch lace trims, attached garters, and matching thigh highs
- G-string not included



- Fishnet pantyhose with jacquard side detail and rhinestone embellishment
- Elastic waistband
- Thong not included

0436, 0436X

O/S, O/S Queen
Black



- Novelty geometric design pantyhose with elastic waistband
- Thong not included

0400

O/S
Black





0367, 0367X

O/S, O/S Queen

Black



- Fence-net pantyhose with solid knitted panty and thigh high design



0082, 0082X

O/S, O/S Queen

Black



- Sheer, open-crotch pantyhose with elastic waistband



0250

O/S
Black



- Semi-sheer suspender pantyhose
- Panty not included



0013, 0013X

O/S, O/S Queen
Black, Red, White



- Sheer garter belt pantyhose with stretch lace garter belt and attached garters
- Panty not included



- Sheer thigh highs with stay-up silicone leopard print elastic top

0432, 0432X

O/S, O/S Queen
Leopard/Black



- Leopard pattern thigh highs with striped elastic top

0433

O/S
Black



- Fishnet thigh high stockings with knitted leopard design and plain top
- Shown with Style 9382 garter belt; sold separately

0347, 0347X

O/S, O/S Queen
Black





0338

O/S

Espresso/Black, Nude/Black, Nude/Hot Pink, Nude/White



- Cuban heel, sheer thigh high stockings
- Plain top with contrast back seam
- Garter belt not included



0007, 0007X

O/S, O/S Queen

Black, Espresso, Hot Pink, Nude, Red, White



- Sheer thigh high stockings with back seam
- Shown with garter belt Style 8735; sold separately



• Sheer thigh highs with stay-up silicone lace top

0005, 0005X

O/S, O/S Queen
Black, Espresso, Nude, Red, White



• Sheer thigh high stockings with
contrast lace, stay-up silicone lace top,
and satin bow detail

0026

O/S
Black/Pink, Black/Red



• Fishnet thigh highs with lace top
• Shown with garter Style 9382;
sold separately

0006, 0006X

O/S, O/S Queen
Black, Red





0192, 0192X

O/S, O/S Queen
Black, Nude



- Fishnet thigh high stockings with back seam and small satin bow detail
- Shown with Style 9382 garter belt; sold separately



0001, 0001X

O/S, O/S Queen
Black, Espresso, Nude, White



- Fishnet thigh highs with back seam and stay-up silicone lace top



• Fishnet pantyhose with back seam

7034

O/S
Black



• Sheer thigh highs with back seam

7031

O/S
Black, Red, White



• Sheer thigh highs
• Stay-up silicone lace top

7030, 7030X

O/S, O/S Queen
Black, White



United States Dreamgirl Sales Representatives and Showrooms

United States Dreamgirl Sales Representatives

Gihan Gabor President of Dreamgirl

Tel. +1-650-888-6000
Email: ggabor@dgbrands.com

Tel. +1-323-268-0220
sales@dgbrands.com
5548 Lindbergh Lane
Bell, CA 90201

CT, DC, DE, MD, MA, ME,
NH, MI, NJ, NY, OH, PA, RI, VT,
Anthony Stefano
Office +1-201-313-2505
Cell +1-917-681-8214
Fax +1-201-313-2506
Email: astefano1@verizon.net

AL, FL, GA, KY, NC, SC, TN, VA, WV
Anne Sabo
Tel. +1-310-430-3544
Email: asabo@dgbrands.com

AZ, CO, CA, NV, HI, NM, UT
Dave George
Cell: +1-310-745-9401
Email: davesellsdg@gmail.com

WA, OR, ID, MT, AK, WY, ND, SD,
NE, KS, IA, MO, MN, WI, IL, IN
Gloria Reynoso
Office: +1-323-268-0220 x274
Email: greynoso@dgbrands.com

Dreamgirl Corporate Headquarters

Customer Service
US Toll Free Tel. +1-800-622-5686
US Toll Free Fax +1-800-625-7363
International Tel. +1-323-268-0220
International Fax +1-323-268-4913
Email: customerservice@dgbrands.com
5548 Lindbergh Lane
Bell, CA 90201
www.dreamgirldirect.com

TX, OK, LA, AR, MS
Stacey Singleton
Tel. +1-210-416-1206
Email: staceysingleton777@yahoo.com



International Dreamgirl Sales Representatives and Showrooms

Africa

Algeria, Botswana, Ivory Coast, Kenya,
Libya, Mauritius, Morocco, Nigeria,
South Africa, Sudan, Tunisia,
Zimbabwe
Canadex International Trading
5255 Henri Bourassa West, STE: 200
St. Laurent, Quebec, CA H4R 2M6
T: +1-514-337-0946
F: +1-514-337-0857
Mobile Canada: +1-514-578-0946
hk@canadextrading.com
www.canadaextrading.com
Contact: Hrant (Harry) Kaprielian

North America

Canada
Jolar-Speck Inc.
2154 Rue De La Province
Longueuil, Quebec, CA J4G 1R7
T: +1-450-674-5515 |
+1-800-565-6527
caroline.joannis@jolarspeck.com
www.jolarspeck.com
Contact: Caroline Joannis

Oceania

Australia
M Distribution Pty Ltd
PO Box 444
Mudgeeraba QLD
Australia 4213
P: +61 7 5522 1950
sales@metrointeractive.net.au
www.metrointeractive.net.au

Asia

Japan
Big Fish Story, Inc.
#404, 2-22, Jogabori-cho, Nishinomiya,
Hyogo,
662-0856, Japan
T: +81-798-31-7831
bigfish@bfinfo.com
www.bfinfo.com
www.happycostume.com
Contact: Masashi Shibata

Indonesia, Malaysia, Singapore
U4RIA, Femme Fatale
220 Orchard Road
Midpoint Orchard #02-11A
Singapore 238 852
M: +65-8228-9339 | T: +65-6738-7198
www.u4ria.com.sg | www.femmefatal.com.sg

Bahrain, Iran, Iraq, Israel,
Jordan, Kuwait, Lebanon, Oman,
Palestine, Qatar, Saudi Arabia, Syria,
Turkey, U.A.E, Yemen
Canadex International Trading
5255 Henri Bourassa West, STE: 200
St. Laurent, Quebec, CA H4R 2M6
T: +1-514-337-0946
F: +1-514-337-0857
Mobile Canada: +1-514-578-0946
hk@canadextrading.com
www.canadaextrading.com
Contact: Hrant (Harry) Kaprielian

Europe

Austria, Czech Republic, Germany,
Italy, Netherlands, Poland,
Romania, Slovenia, Switzerland
Premium Bodywear AG
Chemnitzer Str. 36-38
09228 Chemnitz/Germany
P: +49 37200 860 608
F: +49 37200 860 699
dreamgirl@prebo.de
Contact: Kathleen Richter

Denmark, Finland, Norway, Sweden
Flirt Fashion AB
Drottninggatan 110
11360 Stockholm
Sweden
P: +46 832 6550
info@flirtfashion.se
Contact: Wiggo Berggren

Belgium, France, Luxembourg, Malta
DOMTOM
CL Diffusion
1 Rue Denis Papin
37270 Montlouis-sur-Loire
France
T: 0033 247 52 83 56
www.commande-sexy.com
Contact: Margo Herman, CEO

Europe

Cyprus, Greece
AnaCo Group – A. Anagnostou & SIA OE
a) Central Offices & Warehouse:
459 STR. Korinthou
Patras – Greece
T: 0030 2610361610
F: 0030 2610328688
Email: anaco@otenet.gr
b) Showroom & Office:
6 STR. Semitelou
Athens – Greece
T/F: 0030 2107470333
www.anacogroup.gr
Contact: Elena Anagnostou

All European Countries
Shots B.V
Veesteeg 12, 6658 KP Beneden-Leeuwen,
Netherlands
T: +31 0 487 519 333
www.shots.nl
Contact: Maura Claes

2023/2024 FHV Collection Guide

The option to place orders, check inventory & track order status is now at your fingertips... log onto www.DGorders.com!

Women's US Size Chart															
	REGULAR SIZES									PLUS SIZES					
	XS	S	M	L	XL	S/M	M/L	L/XL	O/S	1X/2X	3X/4X	1X	2X	3X	O/S QUEEN
SIZE	0 - 2	2 - 6	6 - 10	10 - 14	14 - 16	2 - 8	8 - 14	14 - 16	2 - 14	16 - 20	22 - 24	16 - 18	20 - 22	24 - 26	16 - 22
CORSET SIZE		32	34	36	38							40	42	44	
CUP	A	A/B	B/C	C/D	D/E	A/B	B/C	C/D	B/C	D/DD	DD	D/DD	DD/DDD	DDD/F	D/DD
BUST	30" - 32"	32" - 34"	34" - 36"	36" - 38"	38" - 40"	32" - 34"	36" - 38"	38" - 40"	32" - 38"	40" - 46"	46" - 52"	44" - 46"	48" - 50"	52" - 54"	40" - 50"
WAIST	23" - 25"	25" - 27"	27" - 29"	29" - 31"	31" - 33"	25" - 27"	28" - 32"	31" - 33"	24" - 31"	36" - 42"	42" - 46"	38" - 40"	42" - 44"	46" - 48"	36" - 44"
HIP	32" - 34"	34" - 36"	36" - 38"	38" - 40"	40" - 42"	34" - 36"	38" - 40"	40" - 42"	34" - 40"	44" - 50"	50" - 54"	46" - 48"	50" - 52"	54" - 56"	42" - 52"
INSEAM	32"	32"	32"	32"	32"	32"	32"	32"	32"	32"	32"	32"	32"	32"	32"
RISE	6 1/2" - 7"	7" - 7 1/2"	7 1/2" - 8"	8" - 8 1/2"	8 1/2" - 9"	7 1/2" - 8"	8" - 8 1/2"	8 1/2" - 9"	7 1/2" - 8"	9" - 9 1/2"	10" - 10 1/2"	9" - 9 1/2"	10" - 10 1/2"	11" - 11 1/2"	9" - 10"
WEIGHT	85lbs - 90lbs	90lbs - 120lbs	120lbs - 140lbs	140lbs - 160lbs	160lbs - 180lbs	90lbs - 130lbs	130lbs - 160lbs	160lbs - 180lbs	90lbs - 160lbs	165lbs - 220lbs	220lbs - 265lbs	180lbs - 220lbs	220lbs - 260lbs	260lbs - 300lbs	180lbs - 260lbs

Women's INTERNATIONAL Size Chart															
	REGULAR SIZES									PLUS SIZES					
	XS	S	M	L	XL	S/M	M/L	L/XL	O/S	1X/2X	3X/4X	1X	2X	3X	O/S QUEEN
UK	0 - 2	6 - 8	10 - 12	14 - 16	16 - 18	6 - 10	12 - 16	16 - 18	6 - 16	18 - 22	24 - 26	18 - 20	22 - 24	26 - 28	18 - 24
FRANCE/SPAIN	32 - 34	34 - 36	38 - 40	42 - 44	44 - 46	34 - 38	40 - 44	44 - 46	33 - 44	46 - 50	52 - 54	46 - 48	50 - 52	54 - 56	46 - 52
GERMANY	30 - 32	32 - 34	36 - 38	40 - 42	42 - 44	32 - 36	38 - 42	42 - 44	32 - 42	44 - 48	50 - 52	44 - 46	48 - 50	52 - 54	44 - 50
ITALY	34 - 36	38 - 40	42 - 44	46 - 48	48 - 50	38 - 42	44 - 48	48 - 50	38 - 48	50 - 54	56 - 58	50 - 52	54 - 56	58 - 60	50 - 56
JAPAN	5	7 - 9	11 - 13	15 - 17	19 - 21	7 - 13	13 - 17	19 - 21	7 - 17	21 - 25	25 - 29	21 - 23	25 - 27	29 - 31	21 - 25
CUP	A	A/B	B/C	C/D	D/E	A/B	B/C	C/D	B/C	D/DD	DD	D/DD	DD/DDD	DDD/F	D/DD
US CORSET SIZE		32	34	36	38							40	42	44	
BUST	76cm - 81cm	81cm - 86cm	86cm - 91cm	91cm - 97cm	97cm - 102cm	81cm - 86cm	91cm - 97cm	97cm - 102cm	81cm - 97cm	102cm - 117cm	117cm - 132cm	112cm - 117cm	122cm - 127cm	132cm - 137cm	112cm - 127cm
WAIST	54cm - 64cm	64cm - 69cm	69cm - 74cm	74cm - 79cm	79cm - 84cm	61cm - 66cm	71cm - 81cm	79cm - 84cm	61cm - 86cm	91cm - 107cm	107cm - 117cm	96.5cm - 101.5cm	107cm - 112cm	117cm - 122cm	91cm - 112cm
HIP	81cm - 86cm	86cm - 91cm	91cm - 97cm	97cm - 102cm	101cm - 107cm	86cm - 91cm	97cm - 102cm	101cm - 107cm	91cm - 102cm	112cm - 127cm	127cm - 137cm	117cm - 122cm	127cm - 132cm	137cm - 142.5cm	107cm - 135cm
INSEAM	81cm	81cm	81cm	81cm	81cm	81cm	81cm	81cm	81cm	81cm	81cm	81cm	81cm	81cm	81cm
RISE	16cm - 18cm	18cm - 19cm	19cm - 20cm	20cm - 22cm	22cm - 23cm	19cm - 20cm	20cm - 22cm	22cm - 23cm	19cm - 20cm	23cm - 24cm	25cm - 27cm	23cm - 24cm	25.5cm - 26.5cm	28cm - 29cm	23cm - 25cm
WEIGHT	39kg - 41kg	41kg - 54kg	54kg - 64kg	64kg - 73kg	73kg - 85kg	41kg - 59kg	59kg - 73kg	73kg - 85kg	41kg - 73kg	75kg - 100kg	100kg - 120kg	81kg - 100kg	100kg - 118kg	118kg - 136kg	82kg - 118kg

Dreamgirl Catalog Calender

Catalog	Month Issued	Duration
Collection	November	November - October
Costume & Wig	January	January - October
Simply Sexy	February	February - June
Fall/Holiday	June	June - February



Dreamgirl 2023/2024
Fall/ Holiday/ Valentine's Collection
9.25" x 9.75", 23.5cm x 24.7cm
118 pages
Item: 2023-F1
\$10:00

2023/2024 FHV Collection Guide

The option to place orders, check inventory & track order status is now at your fingertips... log onto www.DGorders.com!

FLAT PACK	STYLE	COLOR	SIZE	PAGE
	0001	Black, Espresso, Nude, White	O/S	110
	0001X	Black, Espresso, Nude, White	O/S Queen	110
	0005	Black, Espresso, Nude, Red, White	O/S	109
	0005X	Black, Espresso, Nude, Red, White	O/S Queen	109
	0006	Black, Red	O/S	109
	0006X	Black, Red	O/S Queen	109
	0007	Black, Espresso, Hot Pink, Nude, Red, White	O/S	108
	0007X	Black, Espresso, Hot Pink, Nude, Red, White	O/S Queen	108
	0013	Black, Red, White	O/S	106
	0013X	Black, Red, White	O/S Queen	106
	0026	Black/Pink, Black/Red	O/S	109
	0035	Black, Red	O/S	104
	0035X	Black, Red	O/S Queen	104
	0082	Black	O/S	106
	0082X	Black	O/S Queen	106
	0192	Black, Nude	O/S	110
	0192X	Black, Nude	O/S Queen	110
	0250	Black	O/S	106
	0338	Espresso/Black, Nude/Black, Nude/Hot Pink, Nude/White	O/S	108
	0347	Black	O/S	107
	0347X	Black	O/S Queen	107
	0367	Black	O/S	106
	0367X	Black	O/S Queen	106
	0400	Black	O/S	105
	0416	Azalea	O/S	102
	0416X	Azalea	O/S Queen	102
	0417	Burgundy	O/S	100
	0420	Black	O/S	101
	0420X	Black	O/S Queen	101
	0423	Black	O/S	100
	0432	Leopard/Black	O/S	107
	0432X	Leopard/Black	O/S Queen	107
	0433	Black	O/S	107
	0436	Black	O/S	105
	0436X	Black	O/S Queen	105
	0446	Aubergine	O/S	103
	0446X	Aubergine	O/S Queen	103
	0455	Ruby	O/S	87
	0455X	Ruby	O/S Queen	87
	0459	Black	O/S	88
	0467	Black	O/S	88
	0467X	Black	O/S Queen	88
	1300	Black, Hot Pink, Red	S , M, L	99
	1300X	Black, Hot Pink, Red	1X/2X, 3X/4X	99
	1375	Black, Hot Pink, Red, Turquoise	S , M, L, XL	99
	1377	Hot Pink/Black, Red/Black	S , M, L, XL	98
	1380	Red/Black	S , M, L, XL	99
	1442	Black, Red, White	S , M, L, XL	98
	1442X	Black, Red, White	1X, 2X, 3X	98
	1468	Black, Red	S , M, L, XL	99
	1468X	Black, Red	1X, 2X, 3X	99
	1477	Ballet Pink, Black	S , M, L, XL	98
	1477X	Ballet Pink, Black	1X, 2X, 3X	98
	1478	Black, Ruby	S, M, L, XL	89
	7030	Black, White	O/S	111
	7030X	Black, White	O/S Queen	111
	7031	Black, Red, White	O/S	111
	7034	Black	O/S	111
•	8603	Garnet	S , M, L, XL	47
	8694	Black, Red, White	O/S	95
•	10102	Midnight, Mulberry	S , M, L, XL	52
•	10102X	Mulberry	1X, 2X, 3X	52
•	10460	Garnet	S , M, L, XL	48

Styles in BOLD are New Styles. Prices subject to change. Actual packaging graphics on some styles may vary.

*These are styles intended for hanging but are shipped without a hanger. Add complimentary hangers to your order at the time of purchase by selecting Style HGR001 along with the quantity needed.

2023/2024 FHV Collection Guide

The option to place orders, check inventory & track order status is now at your fingertips... log onto www.DGorders.com!

FLAT PACK	STYLE	COLOR	SIZE	PAGE
•	10460X	Garnet	1X, 2X, 3X	48
	10551	Garnet, Mulberry	O/S	93
	10561	Lipstick Red	O/S	94
•	10996	Black, Rouge, Vintage Rose	S , M, L, XL	46
•	10996X	Black, Rouge, Vintage Rose	1X, 2X, 3X	46
•	11020	Plum, Ruby	S , M, L, XL	51
•	11020X	Plum, Ruby	1X, 2X, 3X	51
	11503	Garnet	O/S	95
	11503X	Garnet	O/S Queen	95
	11776	Garnet, Rose Pink	O/S	94
	11776X	Garnet, Rose Pink	O/S Queen	94
•	11815	Eggplant	S , M, L, XL	50
	12125	Nocturnal	O/S	90
•	12378	Eggplant, Garnet	S , M, L, XL	49
•	12378X	Eggplant, Garnet	1X, 2X, 3X	49
•	12386	Pink Champagne	S , M, L, XL	59
•	12430	Nocturnal	S , M, L, XL	53
•	12431	Nocturnal	S , M, L, XL	53
	12444	Nude/Black	O/S	96
	12446	Mulberry	O/S	93
	12446X	Mulberry	O/S Queen	93
•	12467	Plum	S , M, L, XL	50
•	12467X	Plum	1X, 2X, 3X	50
	12512	Black	O/S	96
	12512X	Black	O/S Queen	96
•	12651	Black	S , M, L, XL	56
•	12652	Black	S , M, L, XL	61
•	12652X	Black	1X, 2X, 3X	61
•	12693	Burgundy	S , M, L, XL	47
•	12761	Black	S , M, L, XL	57
•	12761X	Black	1X, 2X, 3X	57
•	12764	Black	S , M, L , XL	54
•	12765	Black	S , M, L, XL	54
•	12769	Burgundy	S , M, L, XL	47
•	12769X	Burgundy	1X, 2X, 3X	47
•	12770	Black	S , M, L, XL	55
•	12770X	Black	1X, 2X, 3X	55
•	12783	Pink/Black	S , M, L, XL	58
•	12783X	Pink/Black	1X, 2X, 3X	58
•	12784	Pink/Black	S , M, L, XL	59
•	12787	Burgundy	S , M, L, XL	60
•	12787X	Burgundy	1X, 2X, 3X	60
•	12788	Burgundy	S , M, L, XL	60
•	12788X	Burgundy	1X, 2X, 3X	60
•	12789	Nocturnal	S , M, L, XL	61
•	12790	Burgundy	S , M, L, XL	63
•	12790X	Burgundy	1X, 2X, 3X	63
•	12791	Burgundy	S , M, L, XL	63
•	12798	Nocturnal/Black	S , M, L, XL	62
•	12798X	Nocturnal/Black	1X, 2X, 3X	62
	12804	Black	O/S	97
	12804X	Black	O/S Queen	97
	12808	Aubergine	O/S	91
	12809	Burgundy	O/S	92
	12809X	Burgundy	O/S Queen	92
•	12887	Black	S , M, L, XL	57
•	12887X	Black	1X, 2X, 3X	57
•	12889	Black/Animal	S , M, L, XL	56
•	12889X	Black/Animal	1X, 2X, 3X	56
	12910	Nocturnal	O/S	91
	12922	Nocturnal	O/S	90
	12922X	Nocturnal	O/S Queen	90
•	13021	Espresso	S , M, L , XL	8
•	13022	Espresso	S , M, L , XL	7

Styles in BOLD are New Styles. Prices subject to change. Actual packaging graphics on some styles may vary.

*These are styles intended for hanging but are shipped without a hanger. Add complimentary hangers to your order at the time of purchase by selecting Style HGR001 along with the quantity needed.

2023/2024 FHV Collection Guide

The option to place orders, check inventory & track order status is now at your fingertips... log onto www.DGorders.com!

FLAT PACK	STYLE	COLOR	SIZE	PAGE
•	13022X	Espresso	1X, 2X, 3X	7
•	13023	Peony	S, M, L, XL	29
•	13023X	Peony	1X, 2X, 3X	29
•	13024	Black	S, M, L, XL	21
•	13024X	Black	1X, 2X, 3X	21
•	13025	Black	S, M, L, XL	22
•	13029	Silver	S, M, L, XL	11
•	13031	Peony	S, M, L, XL	28
•	13034	Espresso	S, M, L, XL	5
•	13035	Ruby	S, M, L, XL	33
•	13035X	Ruby	1X, 2X, 3X	33
•	13036	Black	S, M, L, XL	3
•	13037	Espresso	S, M, L, XL	9
•	13038	Ruby	S, M, L, XL	31
•	13039	Black	S, M, L, XL	17
•	13041	Black	S, M, L, XL	19
	13042	Ruby	O/S	73
•	13044	Silver	S, M, L, XL	14
•	13045	Silver	S, M, L, XL	15
•	13046	Peacock	S, M, L, XL	26
•	13047	Peacock	S, M, L, XL	27
•	13051	Black, Violet	S, M, L, XL	24
•	13051X	Black, Violet	1X, 2X, 3X	24
•	13052	Black	S, M, L, XL	23
•	13054	Ruby	S, M, L, XL	35
•	13056	Ruby	S, M, L, XL	36
•	13056X	Ruby	1X, 2X, 3X	36
•	13058	Ruby	S, M, L, XL	37
•	13058X	Ruby	1X, 2X, 3X	37
•	13059	Peony	S, M, L, XL	43
•	13059X	Peony	1X, 2X, 3X	43
•	13060	Ruby	S, M, L, XL	45
•	13064	Peony	S, M, L, XL	40
•	13067	Peony	S, M, L, XL	41
•	13067X	Peony	1X, 2X, 3X	41
•	13068	Peony	S, M, L, XL	39
	13072	Violet	O/S	66
	13073	Violet	O/S	67
	13074	Peacock/Black	O/S	75
	13074X	Peacock/Black	O/S Queen	75
	13076	Espresso	O/S	70
	13076X	Espresso	O/S Queen	70
	13079	Violet	O/S	69
	13079X	Violet	O/S Queen	69
	13080	Peacock	O/S	76
	13082	Espresso	O/S	71
	13084	Violet	O/S	65
	13088	Ruby	O/S	72
	13088X	Ruby	O/S Queen	72
	13089	Ruby	O/S	81
	13089X	Ruby	O/S Queen	81
	13091	Black/Ruby	O/S	83
	13092	Peony	O/S	77
	13094	Peony	O/S	78
	13094X	Peony	O/S Queen	78
	13096	Peony	O/S	80
	13097	Ruby	O/S	82
	13100	Peony	O/S	79
	13100X	Peony	O/S Queen	79
	13102	"Santa Baby"	O/S	85
	13102X	"Santa Baby"	O/S Queen	85
•	13106	Silver	S/M, L/XL	13
•	13148	Violet	S, M, L, XL	25



This symbol represents our hanging styles that will now be shipped in a poly bag. Hangers will be provided free of charge if requested.



This symbol represents Dreamgirl's packaged Lingerie & Bedroom Costume Collection which features front and back views of each style.



This symbol represents Dreamgirl's packaged Hosiery Collection, which features front and back views of each style.



This symbol represents Dreamgirl's packaged Thong and Panty Collection, which features front and back views of each style.



This symbol represents Dreamgirl's stocking collection styles in a sleeve insert with front views in a clear package hook for easy hanging and display.



Dreamgirl Hanger
(For use with styles intended for hanging but shipped without a hanger)
Item: HGR001

Styles in **BOLD** are New Styles. Prices subject to change. Actual packaging graphics on some styles may vary.

*These are styles intended for hanging but are shipped without a hanger. Add complimentary hangers to your order at the time of purchase by selecting Style HGR001 along with the quantity needed.



STYLE 13092



Dreamgirl

The images and graphics in this catalogue [or CD] are the copyright-protected work of Dreamgirl Brands. Any use or reproduction without the express written consent of Dreamgirl Brands is strictly prohibited. Violators will be prosecuted to the fullest extent of the law.

COPYRIGHT © MMXXIII

STYLES 13051X, 13052, 13036 & 0467