

Dreamgirl®

取扱店 **ハッピーコスチューム**
by Cat Fish Club

<http://www.happycostume.com>
sales@happycostume.com
TEL 0798-31-7830

2020 COSTUME COLLECTION





Styles 11946 & 11945

Style 11945

"Monster"

M, L, XL, XXL

Oversized tattered jacket with scar print and shoulder pads. Includes tattered top, matching pants, choker with bolts and wrist cuffs with chains. (Five-Piece Set)

New

**Style 11946**

"Monster Babe"

S, M, L, XL

Sleek jumpsuit with scar print and zipper detailing. Includes belt, choker with bolts and chains, and cuffs with chains.

(Wig not included)
(Four-Piece Set)

(Shown With)
Style 11676
"Crimped Wedge Bob Wig".
Green extensions not included.

New

Style 11939

"Prince of Darkness"

M, L, XL, XXL

Rich velvet tunic with large pentagram patch and attached cape. Also includes belt with chains and pentagram charms. (Gloves, pants, and scepter not included)
(Two-Piece Set)

Style 11940

"Princess of Darkness"

S, M, L, XL

Sleek zip front jumpsuit with vampire collar and attached skirt. (One-Piece Set)



Style 11930

"Ninja"
(Women's)

S, M, L, XL

This sleek Ninja costume includes a dress with faux leather sleeves, a sarong with a dragon screen print, fingerless gloves, face-mask, garter, Sai dagger, and leg ties. (Seven-Piece Set)

Style 11931

"Ninja"
(Men's)

M, L, XL, XXL

This versatile Ninja costume can be worn with or without the dragon screen-printed hooded shirt.

Includes pants, facemask, fingerless gloves and faux leather Obi belt. (Sword not included) (Five-Piece Set)

Includes pants, face-mask, fingerless gloves and faux leather Obi belt. (Sword not included) (Five-Piece Set)

New



Style 11962

"Warrior Queen"

S, M, L, XL

New

This glorious dress combines unique quilted diamond patterned faux leather with rich velvet. The included velvet cape has an oversized fur collar and faux leather straps which attach with Velcro to the cape. Also included is a medieval belt with a Velcro back closure. (Gloves and Sword not included)
(Three-Piece Set)

Style 11593

"King of Thrones"

M, L, XL, XXL

Be ready to slay a dragon in this gallant costume which includes a faux leather tunic top and full velvet cape with oversized fur collar. Also includes a medieval styled belt with velcro back closure. (Sword and pants not included.)
(Three-Piece Set)

(Shown With)
Style 6379
"Men's Basic Pant"
M, L, XL, XXL
Black



Style 9893

"King of Egypt"

M, L, XL, XXL

This versatile costume can be worn with or without the included shirt. Includes Egyptian collar with attached gold cape, wrist gauntlets, Royal Nemes headpiece, Eye of Horus Necklace and Egyptian Shendyt skirt with embellished waistband. (Six-Piece Set)

Style 11942

"Queen of de Nile"

S, M, L, XL
1X, 2X, 3X



Exquisite gold shimmering gown with sequin cups and attached sarong. Includes Egyptian collar with attached cape. (Wig and Headpiece not included) (Two-Piece Set)

(Shown With)
"Cleopatra Headpiece"
Style 11656

10832
"Egyptian Queen Wig"

New





Style 11925

"Apollo"

M, L, XL, XXL

New

This versatile costume can be worn with or without the included shirt. Richly embellished Greek styled skirt with Lyre print, gold satin cape with large ruby stone embellishment, wrist gauntlets, and gold leaf headpiece are also included.
(Gold Lyre not included)
(Five Piece Set)

Style 11926

"Venus"

S, M, L, XL

This elegant mythical goddess dress has a sheer over skirt, cascading chiffon sashes, and is embellished with gold trim. Also included are a gold leaf head piece and armbands.
(Three-Piece Set)



Style 11593

"King of Thrones"

M, L, XL, XXL

Be ready to slay a dragon in this gallant costume which includes a faux leather tunic top and full velvet cape with oversized fur collar. Also includes a medieval styled belt with velcro back closure.
(Sword and men's pants not included.)
(Three-Piece Set)

Style 11552

"Dragon Beauty"

S, M, L, XL

Beautiful white reptile embossed velvet gown with flowing sheer chiffon sleeves, has side slits and a dragon applique.
(Wig sold separately.) (One-Piece Set)
(Shown With) Style 11391
"Long Wavy Wig with Back Twist"

Style 11563

"Magic Dragon"

S, M, L, XL
1X, 2X, 3X



Darling dragon costume includes a reptile printed dress with sheer webbed sleeves. Also includes long dragon headpiece with attached tail.
(Wig not included.)
(Two-Piece Set)

(Shown With) Style 11352
"Long Wavy Ombre Wig"



Style 11585

"Samurai"
(Men's)

M, L, XL, XXL

Prepare for battle in this fierce tunic, matching belt with Samurai patch, head piece and wrist gauntlets. (Pants and sword not included.) (Four-Piece Set)

(Shown With)
Style 6379
"Men's Basic Pant"
Black
M, L, XL, XXL

Style 11584

"Samurai"
(Women's)

S, M, L, XL

Dress to kill in this sleek black jumpsuit with lace up neckline detail and Samurai belt with attached skirt. Also includes headpiece and wrist gauntlets. (Sword not included.) (Four-Piece Set)



Style 11138

"Cave Man"

M, L, XL, XXL

Animal-printed stretch velour top with jagged hem and faux-suede pants with jagged hem. Includes head wrap, arm band and necklace. (Five-Piece Set)
(Inflatable club not included)

Style 11139

"Clubbin' Cutie"

S, M, L, XL

Pre-historic chic, animal-printed dress with faux-fur trim, jagged edge hem and removable distressed faux-leather belt with skeleton bones trim. Includes bone barrette, fur boot toppers, necklace, and arm wrap. (Six-Piece Set)

Style 11159

"Caesar"

M, L, XL, XXL

Regal long tunic and draped red satin toga with gold leaf printed design and trim. Includes wrist gauntlets and gold leaf head piece.
(Four-Piece Set)

Style 11588

"Cleopatra"

S, M, L, XL

This stunning Cleopatra costume includes a shimmering sequin gown with slit, jeweled Egyptian collar with attached cape, and rhinestone embellished belt.
(Headpiece, wig and scepter not included.)
(Three-Piece Set)

(Shown With)
"Egyptian Queen Wig"
Style 10832

"Cleopatra Headpiece"
Style 11656
O/S



Style 11565

"Queen Cleo"

XS, S, M, L, XL

This exquisite costume includes an Egyptian print bodysuit with snap-crotch and chiffon skirt with Egyptian Ankh symbol. Also includes a rhinestone embellished headpiece with cobra.
(Wig not included.)
(Three-Piece Set)

(Shown With)
Egyptian Queen Wig
Style 10832

Style 9893

"King of Egypt"

M, L, XL, XXL

This versatile costume can be worn with or without the included shirt. Includes Egyptian collar with attached gold cape, wrist gauntlets, Royal Nemes headpiece, Eye of Horus Necklace and Egyptian Shendyt skirt with embellished waistband.
(Six-Piece Set)





Style 9468

"Disco Dude"

M, L, XL, XXL

Black polyester button front shirt with metallic holographic disco dot. (Pants not included.) (One-Piece Set)

(Shown With)
Style 9605
"Men's Disco Pant"
"M,L,XL,XXL"

Style 11305
"Unisex Disco Wig"

Style 9469

"Disco Doll"

S, M, L, XL

Black stretch knit jumpsuit with metallic holographic disco dot. Includes stretch sequin belt. (Two-Piece Set)



Style 11556

"70's Icon"
(Men's)

M, L, XL, XXL

Groovy holographic print button down shirt and moustache. (Pants, belt, and wig not included.) (Two-Piece Set)

(Shown With)
Style 9605
"Men's Disco Pant"
"M,L,XL,XXL"

Style 11555

"70's Icon"
(Women's)

S, M, L, XL

Fabulous iconic gold holographic print jumpsuit with cascading sleeves and rhinestone belt detailing. (Microphone not included.) (One-Piece Set)

Style 11171

"Hippie Hottie"

S, M, L, XL
1X, 2X, 3X



Groovy starburst tie-dye dress and faux-suede fringe vest with removable "Flower Power" and "Peace" pins. Includes head tie, sunglasses, arm tie and peace sign necklace. (Bracelet not included.) (Eight-Piece Set)

Style 11172

"Hippie Dude"

M, L, XL, XXL

Woodstock-inspired faux-suede fringed top with lace up detailing. Includes tie-dye head band and "Make Love Not War" and "Peace" pins. (Sunglasses not included.) (Four-Piece Set)



Style 11122

"Hair Band"
(Men's)

M, L, XL, XXL

Heavy metal inspired look with ripped shirt with fishnet sleeves and animal-printed pants. Includes metal studded belt, headband and two animal-printed belt ties. (Guitar not included.) (Five-Piece Set)

(Shown With)
Style 11141
"Unisex Rocker Wig"

Style 11123

"Hair Band"
(Women's)

S, M, L, XL

Heavy metal inspired look with animal-printed pants and ripped rocker top with "Heavy Metal" screen print and fishnet sleeves. Includes metal stud belt, head wrap, and two animal-printed belt ties. (Bracelets and guitar not included.) (Five-Piece Set)

(Shown With)
Style 11141
"Unisex Rocker Wig"





New

Style 11956

"Rainbow"
(Men's)

M, L, XL, XXL

Festive tank top and shorts.
(Two-Piece Set)

(Sunglasses not included)

Style 11955

"Rainbow"
(Women's)

S, M, L, XL

Fun rainbow colored jumpsuit
with matching sequin belt.

(Sunglasses, Lollipop and
jewelry not included)
(Two-Piece Set)

Style 11922

"Bada-Boom"

M, L, XL, XXL

New

Form-fitting black and white pinstripe vest with attached sleeves and handkerchief, dickey with tie, and carnation pin. Costume also includes pants and Gangster hat. (Cigar not included) (Five-Piece Set)

Style 11949

"Bada-Bing"

S, M, L, XL

Adorable pinstripe gangster romper with attached tie. Also includes hat, carnation pin, cuffs, and belt with machine gun screen print and attached chains. (Cigar not included) (Five-Piece Set)



New

Style 11927

"Dames Like Us"

S, M, L, XL

This ultra-chic androgynous tailcoat has contrast satin lapels. This costume also includes a satin vest with attached dickey, high-waisted shorts, bow tie, and carnation pin. (Top hat, cigar and fishnet stockings not included)
(Five-Piece Set)

(Shown With)
Style 7034
"Fishnet Pantyhose"
O/S

(Shown with)
Style 11913
"Flapper Wig"

Style 11937

"Party At Gatsby's"

S, M, L, XL

Shimmering silver bodysuit with elaborate sequin detail and snap closure. Also included are an exquisite headpiece with ostrich feathers and sheer skirt with sequin trim.
(Gloves, and jewelry not included)
(Three-Piece Set)

(Shown With)
Style 5218
"Luna Glove"
O/S

Style 11921

"Gatsby"

M, L, XL, XXL

Handsomely tailored tailcoat with contrast satin lapels and pocket with attached handkerchief. Includes satin jacquard 1920's swoop vest with attached shirtfront, bow tie and collar.
(Top hat, and pants not included)
Two-Piece Set)

Style 9493

"Big Bad Wolf"

M, L, XL, XXL

Men's red and black check jagged-edge tunic with faux fur hood with wolf ears. Includes fingerless gloves. (Pants not included.) (Two-Piece Set)

Style 11943

"Big Bad Red"

S, M, L, XL

Gothic style dress with large hook and eye closures and jagged hemline. Includes hooded lace cape, and wolf head choker. (Gloves, basket and fishnets not included) (Three-Piece Set)

(Shown With)
Style 7819
"Dominique Glove"
O/S

Style 7034
"Fishnet Pantyhose"
O/S

New





New

Style 11948

"Ships Ahoy"
(Men's)

M, L, XL, XXL

Regal red velvet pirate's coat with gold braid detailing and attached shirt front. Includes pirate hat with attached scarf, and belt. (Sword and pants not included) (Three-Piece Set)

(Shown With)
Style 6379
"Men's Basic Pant"

Style 11963

"Ships Ahoy"
(Women's)

S, M, L, XL
1X, 2X, 3X



Off-the shoulder, ultra-flattering pirate dress with multi-tiered skirt and attached faux leather vest. Head scarf also included. (Sword not included) (Two-Piece Set)

Style 11957

"Seaside Sailor"
(Women's)

S, M, L, XL

Adorable romper with sailor collar and stripe detailing. Also includes a sailor hat and belt. (Hair bows not included)
(Three-Piece Set)

New

**Style 11958**

"Seaside Sailor"
(Men's)

M, L, XL, XXL

Ultra-comfortable shirt with sailor collar and striped detailing. Also includes the matching shorts and sailor hat.
(Three-Piece Set)



Style 10639

"Frightfully Beautiful"

S, M, L, XL
1X, 2X, 3X



Spooky, luxe black velvet gown with sequin appliqué bodice, lace paneling in skirt and lace waterfall sleeves. (Jewelry not included.) (One-Piece Set)

Style 10640

"Mr. Fright"

M, L, XL, XXL

Kooky double-breasted suit jacket with pinstripe print and attached rose and spider boutonniere. Includes matching pants and casket-print tie. (Cigar and rose not included.) (Three-Piece Set)

Style 10641

"Friday"

S, M, L, XL

Creepy black velvet dress with cross buttons, white collar and cross screen-printed details. Includes stocking bow toppers with cross charms. (Doll and thigh highs not included.) (Two-Piece Set)

(Shown with)
Style 7031
"Sheer Thigh Highs
with Back Seam"

(Shown With)
Style 10814
"Double Braid Wig"

Style 11561

"Arabian Prince"

M, L, XL, XXL

Captivating and ultra-comfortable costume includes Dhoti pants with gold printed velvet vest. Also includes faux brown leather hat with bobby pin loops, and belt. (Sword not included.)
(Four-Piece Set)

Style 11576

"Arabian Princess"

S, M, L, XL

This dazzling Arabian Princess costume includes an off-the-shoulder top with rhinestone embellishment and adjustable shoulder straps. Matching harem pants have a metallic gold print at hemline, and attached printed over skirt. Also includes headpiece.
(Jewelry not included.)
(Three-Piece Set)

(Shown With)

Style 10813

"Harem Princess Wig with
attached Ribbon and Pearl Jewel"



Style 11180

"Angel of Darkness"

S, M, L, XL
1X, 2X, 3X



Radiant black dress with exquisite neckline appliqué, sequin trim and hi-low hemline skirt with layers of glittered feather-shaped petals. Includes black feather angel wings and sequin halo headband.
(Gloves not included.)
(Three-Piece Set)

(Shown With)

Style 5218

"Luna Gloves"
O/S

Style 11633

"Angel Beauty"

S, M, L, XL

This glistening white angel costume includes a dress with sequined neckline applique, and hi-low hemline skirt with layers of glittered feather shaped petals. Also includes white feather angel wings and a radiant headpiece.
(Gloves not included.)
(Three-Piece Set)

(Shown With)

Style 5218

"Luna Gloves"
O/S





Style 11130

"The Lion Tamer"

S, M, L, XL

Rich red velvet top with gold fringed epaulets, lion head buttons and gold sequin trimmed peplum. Includes stretch leggings, top hat and belt with lion head buckle. (Gloves, whip and jewelry not included.) (Four-Piece Set)

Style 11131

"King of The Jungle"

M, L, XL, XXL

Gold stretch velour sleeveless lion top with attached tail and faux-fur hood with ears. Includes matching fingerless gloves. (Pants not included.) (Two-Piece Set)



Style 10624

"Dalmatian Darling"

S, M, L, XL

Dalmatian-print, stretch, velvet dress with hood, faux-fur trim and tail. Includes matching boot covers and dog-collar choker. (Three-Piece Set)

Style 10671

"Dalmatian Diva"

S, M, L, XL
1X, 2X, 3X



Dalmatian-print midi dress with front zipper, faux-fur collar and ribbon-tie back slit. Includes shiny vinyl belt and bone accessory. (Wig, jewelry and cigarette holder not included.) (Three-Piece Set)

(Shown With)
Style 10675
"Dalmatian Diva Wig"

Style 9477

"Little Red"

S, M, L, XL
1X/2X, 3X/4X



Beautifully-detailed fairytale dress with underwire foam cups with pleated ruffles, embroidered heart trim, attached petticoat and lace-trimmed apron. Includes full-length hooded satin cape. (Basket, thigh highs, stocking bows additional and satin gloves not included.)
(Two-Piece Set)

(Shown With)
Style 5218
"Luna Glove"
O/S

Style 10342
"Bow Top Stockings"
O/S, O/S Queen

Style 11182

"Big Bad Wolf"
(Women's)

XS, S, M, L, XL

Playful red plaid jumper dress with large front pocket and faux-fur trim. Includes shaggy faux-fur hood with wolf ears, matching fingerless gloves, and belt with attached furry tail.
(Four-Piece Set)



"Little Red" costume also pairs well
with Dreamguy Style 9493
"Big Bad Wolf"



Style 11627

"Mischief in Neverland"

XS, S, M, L, XL

Playful rich green velvet jagged edge dress with lace up neckline and button front skirt, opens to reveal included shorts. Costume also includes a hat with feather and belt.
(Sword not included)
(Four-Piece Set)

Style 9452

"Fairy-licious"

S, M, L, XL

Holographic-print stretch knit dress with corset-styled bodice, green rhinestone encrusted neckline appliqué and attached sparkly tutu bottom. Includes wand and fairy wings.
(Earrings not included.)
(Three-Piece Set)



New

Style 11951

"Special Ops"
(Women's)

S, M, L, XL

Sleek jumpsuit with zipper front closure and special operations patches. Also includes an armband with a knife, arm tie, leg tie with badge, tactical belt with bullets, handcuffs, knife, and bullet bracelets. (Sunglasses and gloves not Included)
(Ten-Piece Set)



Style 11952

"Special Ops"
(Men's)

M, L, XL, XXL

Rugged tactical vest with bullet strips and special operations patches. Includes Swat Cap, bullet strips, knife, half-face mask and handcuffs. (Gloves, pants and sunglasses not included)
(Six-Piece Set)



Style 11628

"The Sergeant"

M, L, XL, XXL

Rugged sleeveless button down police shirt has police patches and two-pocket front. Also includes police hat with badge, "Sgt. Dick Spectacular" name plate, and tie. (Gloves, handcuffs, and sunglasses not included.) (Four-Piece Set)

Style 10719

"Officer Pat U. Down"

S, M, L, XL

Sleek, double-breasted dress with shiny patent leather trim, police badges and "Police" screen print. Includes belt, police hat with badge, handcuffs, fingerless gloves with "Jail Time" screen print and "Officer Pat U. Down" nameplate. (Sunglasses, baton and jewelry not included.) (Seven-Piece Set)



Style 5236

"Mile High Pilot Hugh Jorgan"

M, L, XL, XXL

Button-front jacket with satin and gold trim details. Includes pilot hat, collar with necktie and removable "Mile High Pilot Hugh Jorgan" name badge. (Pants not included.) (Four-piece set)

(Shown With)

Style 6379

"Men's Basic Pant"

M, L, XL, XXL

Style 10685

"Flight Captain"

S, M, L, XL

1X, 2X, 3X



Midi-length, stretch-knit dress with gold detailing. Includes pilot hat, "Mile High Captain" pin and belt. (Four-Piece Set)





Style 10315

"World Champion"
(Women's)

S, M, L, XL

Black satin boxing robe with belt. Includes lace-up top, boxing gloves and skirt with loop to hold gloves, athletic striping and screen prints. (Five-Piece Set)

Style 10322

"World Champion"
(Men's)

M, L, XL, XXL

Black and gold satin robe with tie belt and gold metallic "World Champion" screen-print. Includes boxing gloves, shorts, and World Champion Belt. (Five-Piece Set)

Dreamgirl® Hot Haunts



Styles 11939 & 11940

New



Style 11939

"Prince of Darkness"

M, L, XL, XXL

Rich velvet tunic with large pentagram patch and attached cape. Also includes belt with chains and pentagram charms. (Gloves, pants, and scepter not included) (Two-Piece Set)

New



Style 11940

"Princess of Darkness"

S, M, L, XL

Sleek zip front jumpsuit with vampire collar and attached skirt. (One-Piece Set)

➤ *New*

➤ *New*



Style 11945

"Monster"

M, L, XL, XXL

Oversized tattered jacket with scar print and shoulder pads. Includes tattered top, matching pants, choker with bolts and wrist cuffs with chains. (Five-Piece Set)



Sleek jumpsuit with scar print and zipper detailing. Includes belt, choker with bolts and chains, and cuffs with chains. (Wig not included) (Four-Piece Set)
(Shown With) Style 11676
"Crimp Style Bob"

Style 11946

"Monster Babe"

S, M, L, XL

➤ *New*

Style 11932

"Glam Witch"

S, M, L, XL

This bewitching costume includes a sequin-embellished velvet off-the-shoulder bodysuit with snap crotch closure and attached shoulder sashes.

Witch hat and sequin embellished skirt are also included. (Gloves and broom not included)
(Three-Piece Set)

(Shown With)
Style 7819
"Dominique Glove"
O/S



Style 11944

"Death Becomes Him"

M, L, XL, XXL

New

Festive multi-colored skeleton
printed top, pants, face mask
and fingerless gloves.
(Four-Piece Set)



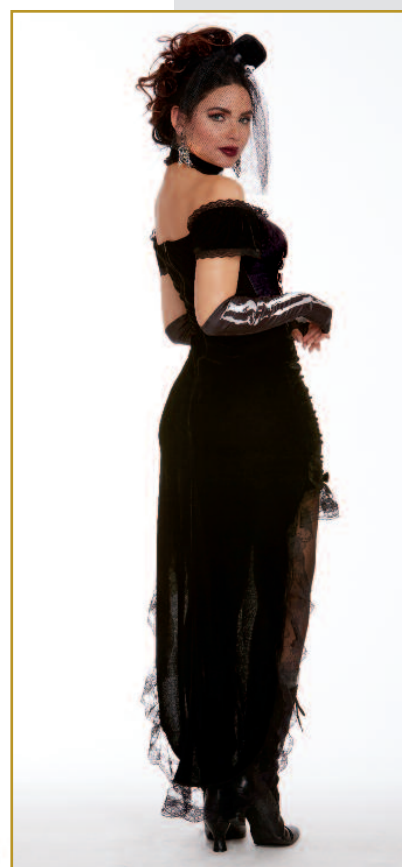
New

Style 11934

"Madame Skeleton"

S, M, L, XL

This captivating skeleton costume includes an off-the-shoulder dress with skeleton screen printed chest and high-low hemline. Also included are skeleton printed fingerless gloves, leggings and a mini hat with veil headband. (Four-Piece Set)



Style 11967

"Voodoo Priestess"

S, M, L, XL
1X, 2X, 3X*New*

Animal printed off-the-shoulder dress with bone trim detail and multi-tiered skirt. Voodoo headpiece with feathers and skull is also included.

(Necklace, gloves and shrunken heads in models hand are not included.)

(Two-Piece Set)

(Shown With)

Style 7819

"Dominique Glove"

O/S



New

Style 11923

"Mummy Dearest"

S, M, L, XL

Tattered Egyptian mummy bodysuit with elongated, jagged edge sleeves and snap crotch closure. Also included are an Egyptian collar, leg warmers, and a rhinestone-embellished skirt with Ankh symbol. (Scepter and headpiece not included) (Four-Piece Set)

(Shown With)
Style 11656
"Cleopatra Headpiece"
O/S



Style 11179

“Bare Bones Babe”

XS, S, M, L, XL

Creepy-licious skeleton-print top with full length attached sheer open-front skirt. Includes skeleton printed leggings, fingerless gloves, and black rose headpiece with skull. (Jewelry not included.) (Four-Piece Set)



Style 10260

“Bloody Handsome”

M, L, XL, XXL

Black velvet coat with embossed scroll design and an attached vampire collar. Includes printed satin vest with attached shirt front and ruffled collar. (Pants and gloves not included.) (Two-Piece Set)



Style 11636

“The Black Widow”

S, M, L, XL
1X, 2X, 3X



This captivating costume includes a sleek, strappy off-the-shoulder gown with jewel encrusted spider, a high scalloped slit and attached spider web cape. (Jewelry and headpiece not included.) (One-Piece Set)

(Shown With)
Style 11659 “Spider Headpiece”
O/S



Bewitching black velvet gown with metal neckline closures and strategically placed purple lace-up back detailing. Includes belt, sheer jacket and witch hat with spider. (Broom not included.) (Four-Piece Set)

Style 11151

"Bewitching Beauty"

S, M, L, XL
1X, 2X, 3X



Style 10663

"Wicked, Wicked Witch"

S, M, L, XL

Sexy stretch-knit dress with cutout sequin pentagram appliqué on bodice. Includes removable, high-low, sparkly tulle skirt, mesh fingerless gauntlet gloves and tall witch's hat. (Broom and fishnet stockings not included.) (Four-Piece Set)



Style 11582

"Pagan Witch"

S, M, L, XL

This bewitching, beautiful gown with oversized hood, cold shoulder sleeves, unique ripped-looking bodice fabric, has a full skirt with jagged edge pieces. Also includes choker with pentagram and waist cinching belt. (Press on nails not included.) (Three-Piece Set)

(Shown With)
Style 11328
"Extra-Long Straight Wig"



Style 10641

"Friday"

S, M, L, XL

Creepy black velvet dress with white contrast collar and gothic cross screen prints and buttons. (Doll and thigh highs not included.) (Two-Piece Set)

(Shown With)
Style 7031
"Sheer Thigh Highs With
Back Seam"
O/S

Style 10814
"Double Braid Wig"



Style 10640

"Mr. Fright"

M, L, XL, XXL

Kooky double-breasted suit jacket with pinstripe print and rose boutonniere with attached spider. Includes matching pants and casket-print tie. (Cigar not included.) (Three-Piece Set)



Style 10639

"Frightfully Beautiful"

S, M, L, XL
1X, 2X, 3X



Spooky, luxe black velvet gown with sequin appliqué bodice, lace paneling in skirt and lace waterfall sleeves. (Rose and jewelry not included.) (One-Piece Set)



Flirty sugar skull dress with ruffled neckline, brightly-colored skeleton screen print, satin ribbon belt and multi-tiered skirt with sugar skull detailing. Includes beaded cross necklace. (Headpiece, stockings and gloves not included.) (Two-Piece Set)

(Shown With)
Style 10003 "Day of The Dead Headpiece"

Style 5218 "Luna Glove"

Style 10680

"Lady Of The Dead"

S, M, L, XL
1X, 2X, 3X



Style 11637

"Wicked Clown"

XS, S, M, L, XL

This scary-licious clown costume includes a satin dress with sheer ruffled attached skirt and tattered sleeves with matching bloomer styled shorts, and ruffled collar. Also includes playful clown headpiece. (Wig, knife, and stockings not included.) (Four-Piece Set)

(Shown With)
Style 11115
"Long Wavy Layered Wig"



Style 11632

"Horror Honey"

S, M, L, XL

Fabulously frightening striped suit with peplum and belt also includes a matching tie. (Gloves and hair extensions not included.) (Four-Piece Set)

(Shown With)
Style 5218
"Luna Glove"
O/S

Style 11401
"Long Curly Ombre
Three Piece Hair
Extensions"

Dreamgirl® Warriors



Style 11962

New

Style 11962

"Warrior Queen"

S, M, L, XL

This glorious dress combines a unique quilted diamond patterned faux leather, with a rich velvet. The included velvet cape has an oversized fur collar and faux leather straps which attach with Velcro to the cape. Also included is a medieval belt with a Velcro back closure. (Gloves and Sword not included)
(Three-Piece Set)



Style 11959

"Majestic Warrior"

S, M, L, XL

New

Rich red dress with lace trim, layered under metallic faux silver chainmail skirt with faux leather strap. Also includes three small knives, and sword with tassel. (Sword in models hand not included)
(Six-Piece Set)



➤ *New*



Style 11931

"Ninja"
(Men's)

M, L, XL, XXL

This versatile Ninja costume can be worn with or without the dragon screen-printed hooded shirt. Includes pants, facemask, fingerless gloves and faux leather Obi belt. (Sword not included)
(Five-Piece Set)

➤ *New*



Style 11930

"Ninja"
(Women's)

S, M, L, XL

This sleek Ninja costume includes a dress with faux leather sleeves, a sarong with a dragon screen print, fingerless gloves, half face mask, garter, Sai dagger, and leg ties.
(Seven-Piece Set)

Style 11593

“King of Thrones”
M, L, XL, XXL

Be ready to slay a dragon in this gallant costume, which includes a faux leather tunic top and full velvet cape with oversized fur collar. Also includes a medieval styled belt with velcro back closure. (Gloves, sword and pants not included.) (Three-Piece Set)

(Shown With)
Style 6379
“Men’s Basic Pant”
M, L, XL, XXL
Black



Style 9827

“Victorious Beauty”
S, M, L, XL

Distressed brown faux-leather dress with gold detailing. Includes matching brown velvet cape with faux-fur collar. (Sword not included) (Two-Piece Set)



Style 11585

“Samurai”
(Men’s)
M, L, XL, XXL

Prepare for battle in this fierce tunic, matching belt with Samurai patch, head piece and wrist gauntlets. (Pants and sword not included.) (Four-Piece Set)



Style 11584

“Samurai”
(Women’s)
S, M, L, XL

Dress to kill in this sleek black jumpsuit with lace up neckline detail and Samurai belt with attached skirt. Also includes headpiece and wrist gauntlets. (Sword not included.) (Four-Piece Set)



Steampunk!
Through The Ages



Style 11942 & 9893

Style 11942

"Queen of de Nile"

S, M, L, XL
1X, 2X, 3X



Exquisite gold shimmering gown with sequin cups and attached sarong. Includes Egyptian collar with attached cape. (Headpiece not included) (Two-Piece Set)

(Shown With)
Style 11656
"Cleopatra Headpiece"
O/S

Style 10832
"Egyptian Queen Wig"

New



Style 11159

"Caesar"

M, L, XL, XXL

Regal long tunic and draped red satin toga with gold leaf printed design and trim. Includes wrist gauntlets and gold leaf head piece. (Four-Piece Set)



Style 11588

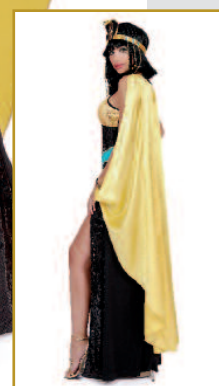
"Cleopatra"

S, M, L, XL

This stunning Cleopatra costume includes a shimmering sequin gown with slit, jeweled Egyptian collar with attached cape, and rhinestone embellished belt. (Headpiece and scepter not included.) (Three-Piece Set)

(Shown With)
Style 10832
"Egyptian Queen Wig"

Style 11656
"Cleopatra Headpiece"
O/S



Style 9893

"King of Egypt"

M, L, XL, XXL

This versatile costume can be worn with or without the included shirt. Includes Egyptian collar with attached gold cape, wrist gauntlets, Royal Nemes headpiece, Eye of Horus Necklace and Egyptian Shendyt skirt with embellished waistband. (Six-Piece Set)



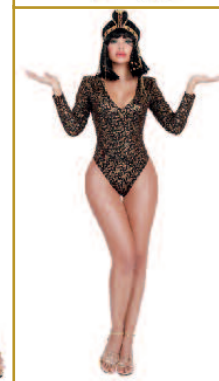
Style 11565

"Queen Cleo"

XS, S, M, L, XL

This exquisite costume includes an Egyptian print bodysuit with snap-crotch and chiffon skirt with Egyptian Ankh symbol. Also includes a rhinestone embellished headpiece with cobra. (Scepter and wig not included.) (Three-Piece Set)

(Shown With)
Egyptian Queen
Wig
Style 10832



Style 10654

"Ramses"

M, L, XL, XXL

Metallic gold shirt, Egyptian collar with attached gold cape, wrist gauntlets, Royal Nemes headpiece and Egyptian Shendyt skirt with embellished waistband. This versatile costume can be worn with or without the included shirt. (Sword not included.) (Five-Piece Set)



Style 10290

"Exquisite Cleopatra"

S, M, L, XL
1X/2X, 3X/4X

Exquisite velvet gown with Egyptian pattern, front slits and gold-trimmed detailing. Includes Egyptian collar and belt. (Jewelry and headpiece not included.) (Three-Piece Set)



Style 11138

"Cave Man"

M, L, XL, XXL

Animal-printed stretch velour top with jagged hem and faux-suede pants with jagged hem. Includes head wrap, arm band and necklace. (Five-Piece Set)



Style 11139

"Clubbin' Cutie"

S, M, L, XL

Pre-historic chic, animal-printed dress with faux-fur trim, jagged edge hem and removable distressed faux-leather belt with skeleton bones trim. Includes bone barrette, fur boot toppers, necklace, and arm wrap. (Inflatable club not included) (Six-Piece Set))



Style 11134

"Saloon Gal"

S, M, L, XL
1X, 2X, 3X



Ultra-flattering, western-styled off-the-shoulder dress with attached skirt and distressed leather-look lace-up waist corset. (Choker and petticoat not included.) (Two-Piece Set)



Style 11583

"Medieval Maiden"

S, M, L, XL
1X, 2X, 3X



Simply stunning rich velvet gown with exquisitely sequined embellished front bodice and gold satin trim. Also includes headpiece with veil. (Jewelry not included.) (Two-Piece Set)



Style 5084

"Hot Scottie"

M, L, XL, XXL

Plaid pleated kilt with attached sash. Includes matching hat, belt with bag and two sock garters with matching plaid ties. (Socks and shirt not included.) (Five-Piece Set)



Style 10669

"Gypsy"

S, M, L, XL
1X, 2X, 3X



Peasant-style dress with velvet lace-up bodice, gold trim, multi-tiered handkerchief skirt with paisley print and gold coin detailing. Includes matching head wrap with gold coin trim. (Jewelry not included.) (Two-Piece Set)



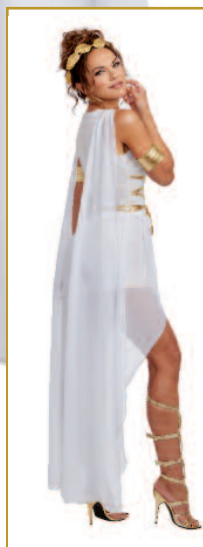
Dreamgirl® Mythical Magic

Style 11926 & 11925





New



Style 11926

"Venus"

S, M, L, XL

This elegant mythical goddess dress has a sheer over skirt, cascading chiffon sashes, and is embellished with gold trim. Also included are a gold leaf head piece and armbands.
(Three-Piece Set)

New



Style 11925

"Apollo"

M, L, XL, XXL

This versatile costume can be worn with or without the included shirt. Richly embellished Greek styled skirt with Lyre print, gold satin cape with large ruby stone embellishment, armbands and gold leaf headpiece are also included.
(Sword not included)
(Five-Piece Set)

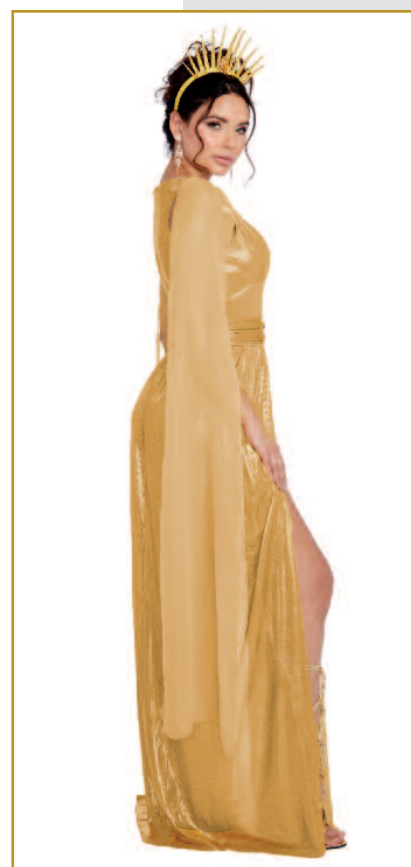
New

Style 11954

"Sun Goddess"

S, M, L, XL

Mesmerizing gold gown with gold embroidered trim epaulets, attached sheer sashes, and front slits. Also includes glittering sun goddess headpiece and belt. (Three-Piece Set)



Style 8860

“He’s a God”
M, L, XL, XXL

White tunic with gold satin attached cape and matching trim. Gold leaf headpiece, removable belt and wrist gauntlets included. (Four-Piece Set)



Style 11572

“Medusa”
S, M, L, XL

Alluring asymmetrical black velvet gown with green sequined snake design and front slit. Also includes rhinestone embellished headpiece with snakes. (Scepter not included.) (Two-Piece Set)



Style 11633

“Angel Beauty”
S, M, L, XL

This glistening white angel costume includes a dress with sequined neckline applique, and hi-low hemline skirt with layers of glittered feather shaped petals. Also includes white feather angel wings and a radiant headpiece. (Gloves and jewelry not included.) (Three-Piece Set)

(Shown With)
Style 5218
“Luna Glove”
O/S



Style 11180

“Angel of Darkness”
S, M, L, XL
1X, 2X, 3X



Radiant black dress with exquisite neckline applique, sequin trim and hi-low hemline skirt with layers of glittered feather-shaped petals. Includes black feather angel wings and sequin halo headband. (Gloves, earrings and thigh highs not included.) (Three-Piece Set)

(Shown With)
Style 10341
“Midnight Madness
Gloves”
O/S





Exquisite midnight blue velvet gown with attached sparkling silver mystical-print sheer cape. Includes shimmering rhinestone headpiece. (Scepter not included.) (Two-Piece Set)

Style 11149

"The Sorceress"

S, M, L, XL
1X, 2X, 3X



Style 11563

"Magic Dragon"

S, M, L, XL
1X, 2X, 3X



Darling dragon costume includes a reptile printed dress with sheer webbed sleeves. Also includes long dragon headpiece with attached tail. (Wig, gloves and stockings not included.) (Two-Piece Set)

(Shown With)
Style 11352
Long Wavy Ombre Wig



Style 11154

"Unicorn Beauty"

XS, S, M, L, XL

Sparkle-printed white stretch velvet zipper-front dress with rainbow faux-fur trim, attached tail and hood with unicorn horn & ears. Includes boot covers. (Wig not included.) (Two-Piece Set)



Dreamgirl® Roaring 20's





Styles 11937, 11921, 11938, 11977

Style 11937

"Party At Gatsby's"

S, M, L, XL

New

Shimmering silver bodysuit with elaborate sequin detail and snap closure. Also included are an exquisite headpiece with ostrich feathers and sheer skirt with sequin trim.

(Cigarette holder, gloves, and jewelry not included)
(Three-Piece Set)

(Shown With)
Style 5218
"Luna Glove"
O/S





New

Style 11938

"Roxy's Revenge"

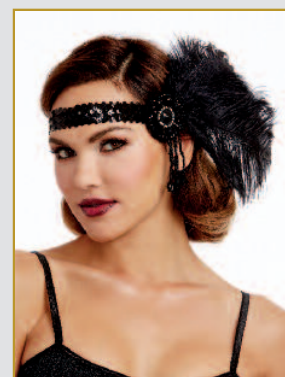
S, M, L, XL
1X, 2X, 3X



Stunning dress with ombre sequin design and shimmering neckline piece. Includes sequin headband with ostrich feather. (Boa, gloves and cigarette holder not included) (Two-Piece Set)

(Shown With)
Style 5218
"Luna Glove"
O/S

(Pair With)
11977
"Flapper Headpiece"



➤ *New*



Style 11927

"Dames Like Us"

S, M, L, XL

This ultra-chic androgynous tailcoat has contrast satin lapels. This costume also includes a satin vest with attached dickey, high-waisted shorts, bow tie, and carnation pin. (Top hat and fishnet stockings are not included)
(Five-Piece Set)

(Shown With) Style 7034
"Fishnet Pantyhose"
O/S

➤ *New*



Style 11921

"Gatsby"

M, L, XL, XXL

Handsomely tailored tailcoat with contrast satin lapels and pocket with attached handkerchief. Includes satin jacquard 1920's swoop vest with attached shirtfront, bow tie and collar. (Top hat, cane, and pants not included)
(Two-Piece Set)

(Shown With) Style 6379
"Men's Basic Pant"
M, L, XL, XXL

New

Style 11919

"All Dolled Up!"

S, M, L, XL

This exquisite 1920's dress is embellished front and back with shimmering sequins. Off-the-shoulder fringe sleeves are both flirty and flattering. Includes sequin headpiece with ostrich feather. (Boa, fishnets, cigarette holder, jewelry and gloves are not included) (Two-Piece Set)

(Shown With)
Style 5218
"Luna Glove"
O/S

Style 7034
"Fishnet Pantyhose"
O/S

(Pair With)
11977
"Flapper Headpiece"



Style 11920

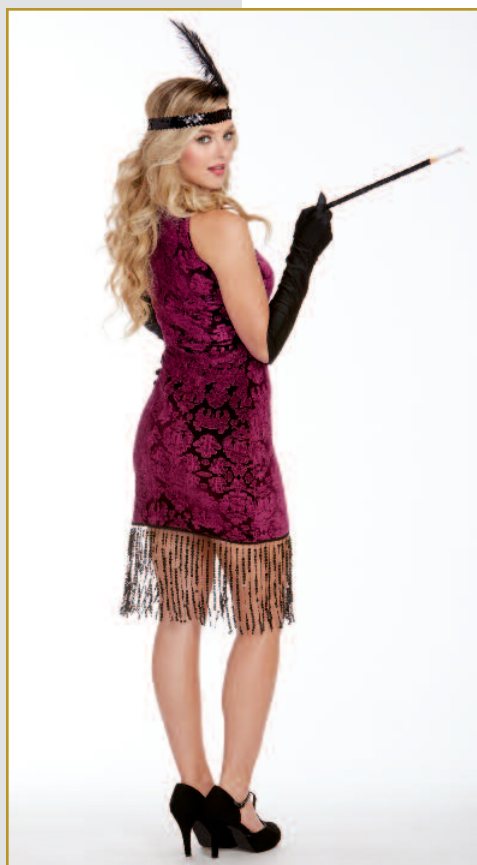
"Gatsby Girl"

S, M, L, XL

New

This rich burgundy imprinted velvet dress with rhinestone-embellished collar has an illusion neckline and sequin fringe trim. Includes sequin headpiece with ostrich feather. (Boa, cigarette holder, earrings, and gloves not included)
(Two-Piece Set)

(Shown With)
Style 5218
"Luna Glove"
O/S



➤ *New*



Style 11922

"Bada-Boom!"

M, L, XL, XXL

Form-fitting black and white pinstripe vest with attached sleeves and handkerchief, dickey with tie, and carnation pin. Costume also includes pants and Gangster hat. (Cigar not included)
(Five-Piece Set)

➤ *New*



Style 11949

"Bada-Bing!"

S, M, L, XL

Adorable pinstripe gangster romper with attached tie. Also includes hat, carnation pin, cuffs, and belt with machine gun screen print and attached chains. (Cigar not included)
(Five-Piece Set)

Style 8105

"Zoot Suit Riot"

M, L, XL, XXL

Button-front, longer-length pinstriped zoot suit with matching pants with side pocket and gold chain detail. Includes adjustable/removable elastic suspenders, matching hat and necktie with "\$" sign detail. (Shirt not included.) (Five-Piece Set)



Style 8190

Gangsta"
(Men's)

M, L, XL, XXL

Black and white pinstriped, double-breasted gangster suit. Includes a dickie, machine gun screen-printed necktie, carnation pin and hat. (Shirt not included.) (Six-Piece Set)



Style 10700

"Swanky Flapper"

S, M, L, XL
1X, 2X, 3X



1920's-inspired dress with off-the-shoulder fringe detail and gold intricately-embroidered neckline & hemline trim. Includes gold sequined headpiece with ostrich feather. (Boa, gloves, cigarette holder and jewelry not included) (Two-Piece Set)



Striped three-button jacket. Includes hat and bow tie. (Shirt and pants not included.) (Three-Piece Set)

(Shown With)
Style 6379 "Men's Basic Pant"
M, L, XL, XXL

Style 9838

"Good Time Charlie"

M, L, XL, XXL



Style 11545

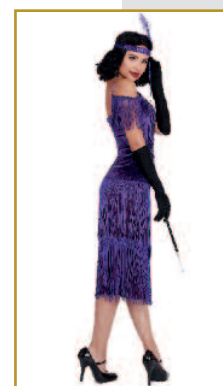
"Miss Ritz"

S, M, L, XL
1X, 2X, 3X



Exquisite rich purple flapper dress with off-the-shoulder fringe sleeves and back zipper. Includes sequin headpiece with ostrich feather. (Gloves, cigarette holder, and jewelry not included.) (Two-Piece Set)

(Shown With)
Style 5218
"Luna Glove"
O/S



Style 10210

"Downton Doll"

S, M, L, XL
1X, 2X, 3X



Have a rip-roaring time in this 1920's inspired beautiful flapper costume! You'll dazzle them all, coming and going, in this deco-design printed velvet dress with embellished neckline. Sequin fringe hemline and matching headpiece with ostrich feather completes this fabulous look. Exquisite midnight blue embossed stretch velvet dress with jeweled neckline and sequin fringe trim. Includes jeweled headpiece with ostrich feather. (Boa, gloves, cigarette holder and jewelry not included) (Two-Piece Set)

(Shown With)
Style 5218
"Luna Glove"
O/S

Dreamgirl through the decades



New



Style 11955

"Rainbow"
(Women's)

S, M, L, XL

Fun rainbow colored jumpsuit with matching sequin belt.
(Jewelry not included)
(Two-Piece Set)

New



Festive tank top and shorts.
(Two-Piece Set)

Style 11956

"Rainbow"
(Men's)

M, L, XL, XXL

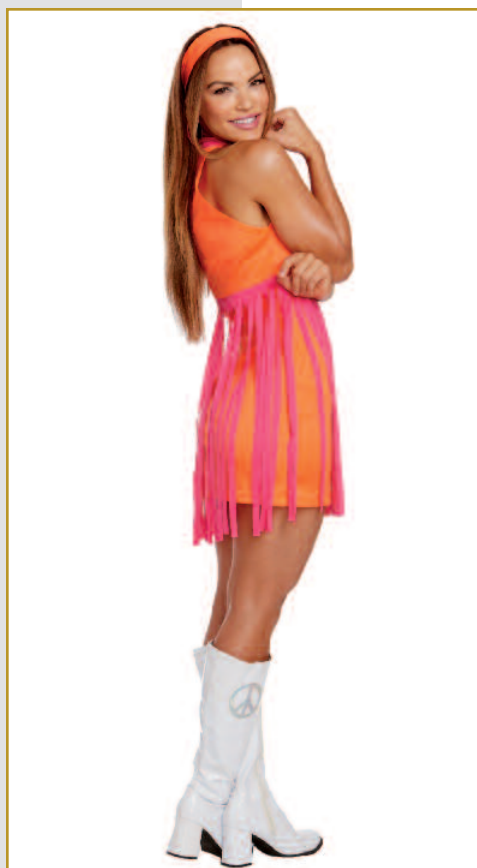
Style 11969

"Groovy Baby"

S, M, L, XL

New

Groovy halter dress with peace sign and long fringe trim. Also includes matching headband. (Two-Piece Set)



New

Style 11970

"Disco Babe"

S, M, L, XL
1X, 2X, 3X



Glittering 1970's disco dress
with bell sleeves, gold sequin
belt and Disco necklace.
(Three-Piece Set)





Style 11555

"70's Icon"
(Women's)

S, M, L, XL

Fabulous iconic gold holographic print jumpsuit with cascading sleeves and rhinestone belt detailing. (Microphone not included.) (One-Piece Set)



Groovy holographic print button down shirt and moustache. (Pants, belt, and wig not included.) (Two-Piece Set)
"M,L,XL,XXL"

(Shown With)
Style 9605 "Men's Disco Pant"
"M,L,XL,XXL"

Style 11556

"70's Icon"
(Men's)

M, L, XL, XXL



Black stretch knit jumpsuit with metallic holographic disco dot. Includes stretch sequin belt. (Two-Piece Set)

Style 9469

"Disco Doll"

S, M, L, XL



Style 9468

"Disco Dude"

M, L, XL, XXL

Black polyester button front shirt with metallic holographic disco dot. (Pants, sunglasses, belt, wig, and chain not included) (One-Piece Set)

(Shown With)
Style 9605
"Men's Disco Pant"
M, L, XL, XXL

Style 11306
"Unisex Disco Wig"
11306



Style 11106

"Disco Diva"

S, M, L, XL
1X, 2X, 3X



Foxy black knit dress with metallic holographic disco dot, sweetheart neckline and side slit. Includes stretch pink sequin belt and disco ball necklace. (Additional jewelry not included.) (Three-Piece Set)

Style 11172

"Hippie Dude"

M, L, XL, XXL

Woodstock-inspired faux-suede fringed top with lace up detailing. Includes tie-dye head band and "Make Love Not War" and "Peace" pins. (Sunglasses not included.) (Four-Piece Set)



Style 8158

"Go Go Gorgeous"

S, M, L, XL

Stretch-knit, A-line, go-go dancer dress with retro-pattern, bell-shaped long sleeves and unique-shaped neckline. Includes matching retro glasses, earrings, headband and faux-vinyl daisy belt. (Five-Piece Set)



Style 11171

"Hippie Hottie"

S, M, L, XL
1X, 2X, 3X



Groovy starburst tie-dye dress and faux-suede fringe vest with removable "Flower Power" and "Peace" pins. Includes head tie, sunglasses, arm tie and peace sign necklace. (Bracelet not included.) (Eight-Piece Set)



Style 11123

"Hair Band"
(Women's)

S, M, L, XL

Heavy metal inspired look with animal-printed pants and ripped rocker top with "Heavy Metal" screen print and fishnet sleeves. Includes metal stud belt, head wrap, and two animal-printed belt ties. (Bracelets and guitar not included.)
(Five-Piece Set)

(Shown With) Style 11141
"Unisex Rocker Wig"



Style 11122

"Hair Band"
(Men's)

M, L, XL, XXL

Heavy metal inspired look with ripped shirt with fishnet sleeves and animal-printed pants. Includes metal studded belt, head band and two animal-printed belt ties. (Guitar not included.)
(Five-Piece Set)

(Shown With) Style 11141
"Unisex Rocker Wig"

Dreamgirl® Once Upon A Time



Style 11943

➤ *New*

Style 11943

"Big Bad Red"

S, M, L, XL
1X, 2X, 3X



Gothic styled dress with large hook and eye closures and jagged hemline. Includes hooded lace cape, and wolf head choker. (Gloves, basket and fishnets not included)
(Three-Piece Set)

(Shown With)
Style 7819
"Dominique Glove"
O/S



Style 11941

"Vengeful Vixen"

S, M, L, XL

Black shimmering dress with sheer illusion detailing, and attached cape. Includes feather wings. (Headpiece not included)
(Two-Piece Set)

(Shown With)
Style 11651
"Mystical Ram's
Horn Headpiece"
O/S

New



New



Style 11963

"Ships Ahoy"
(Women's)

S, M, L, XL
1X, 2X, 3X



Off-the shoulder, ultra-flattering pirate dress with multi-tiered skirt and attached fauxleather vest. Head scarf also included.

(Sword not included)
(Two-Piece Set)

(Shown With) Style 10799
"Pirate Hat" (Women's)
O/S

New



Regal red velvet pirate's coat with gold braid detailing and attached shirt front. Includes pirate hat with attached scarf, and belt.

(Sword and pants not included)
(Three-Piece Set)

Style 11948

"Ships Ahoy"

M, L, XL, XXL

Style 11627

"Mischief in Neverland"

XS, S, M, L, XL

Playful rich green velvet jagged edge dress with lace up neckline and button front skirt, opens to reveal included shorts. Costume also includes a hat with feather and belt. (Sword not included)
(Four-Piece Set)



Style 10673

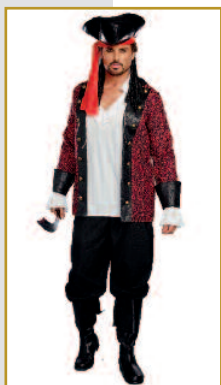
"Holy Ship!"
(Men's)

M, L, XL, XXL

Paisley-print pirate jacket with faux-leather trim and skull buttons. Includes white lace-up shirt and faux-leather head wrap. (Pirate hat, pants and sword not included.)
(Three-Piece Set)

(Shown With)
Style 10800
"Pirate Hat"
(Men's)
O/S

Style 6379
"Men's Basic Pant"
M, L, XL, XXL



Style 9452

"Fairy-licious"

S, M, L, XL

Holographic-print stretch knit dress with corset-styled bodice, green rhinestone encrusted neckline appliqué and attached sparkly tutu bottom. Includes wand and fairy wings. (Earrings not included.)
(Three-Piece Set)



Style 11182

"Big Bad Wolf"
(Women's)

XS, S, M, L, XL

Playful red plaid jumper dress with large front pocket and faux-fur trim. Includes shaggy faux-fur hood with wolf ears, matching fingerless gloves, and belt with attached furry tail. (Four-Piece Set)



Style 9477

"Little Red"

S, M, L, XL
1X/2X, 3X/4X



Beautifully-detailed fairytale dress with underwire foam cups with pleated ruffles, embroidered heart trim, lace-trimmed apron and attached petticoat. Includes full-length hooded satin cape. (Basket, thigh highs, stocking bows and satin gloves not included.) (Two-Piece Set)

(Shown With)
Style 10342
"Bow Top
Stockings"
O/S,
O/S Queen



Style 5218
"Luna Gloves"
O/S

Style 9493

"Big Bad Wolf"
(Men's)

M, L, XL, XXL

Men's red and black check jagged-edge tunic with faux fur hood with wolf ears. Includes fingerless gloves. (Pants not included.) (Two-Piece Set)



Style 11156

"Scarecrow"

S, M, L, XL

Adorable off-the-shoulder button-front peasant dress with plaid patches and straw trim. This versatile costume can be worn with or without included Roxie short. Includes matching boot toppers, straw hat, rope choker, belt and wrist ties. (Seven-Piece Set)



Style 11561

“Arabian Prince”
M, L, XL, XXL

Captivating and ultra-comfortable costume includes Dhoti pants with gold printed velvet vest. Also includes faux brown leather hat with bobby pin loops, and belt. (Sword not included.) (Four-Piece Set)



Style 10298

“The Sultan”
M, L, XL, XXL

Exotic purple satin tunic with attached velvet vest with gold tassel braid. Includes gold sash, satin harem pants and jeweled turban. (Shoe covers and sword not included.) (Four-Piece Set)



Style 11576

“Arabian Princess”
S, M, L, XL

This dazzling Arabian Princess costume includes an off-the-shoulder top with rhinestone embellishment and adjustable shoulder straps. Matching harem pants have a metallic gold print at hemline, and attached printed over skirt. Also includes headpiece. (Jewelry not Included.)



Style 10297

"Hatter Madness"
(Men's)

M, L, XL, XXL

Brown velvet jacket with uneven pockets and purple trim. Includes diamond-print vest with polka dot buttons and attached purple dickey with large bow tie, and oversized velvet hat. (Wig and pants not included.) (Three-Piece Set)



Style 11162

"Hatter Madness"
(Women's)

S, M, L, XL

Quirky, corset-styled dress with printed-satin layered high-low skirt. Includes stretch velvet shrug with printed bow tie, diamond printed stocking topper bow pins and over-sized velvet top hat with card and peacock feather. (Gloves, petticoat, and thigh highs not included.) (Four-Piece Set)



(Shown With)
Style 5218
"Luna Glove"
O/S

Style 10649

"White Rabbit"
(Men's)

M, L, XL, XXL

Velvet jacket with pocket watch appliqué, black-and-white checkered cuffs and black clock-printed vest with attached faux-fur dickey and black satin bow tie. Includes matching top hat with rabbit ears and fake pocket watch with chain fob. (Pants and gloves not included.) (Four-Piece Set)



Style 11161

"Magic Cat"

S, M, L, XL

Whimsical bright pink and purple striped panne velvet dress with attached tail and shaggy fur hood with cat ears. Includes fingerless gloves, choker and boot covers. (Wig not included.) (Three-Piece Set)







Styles 11966

Style 11966

"Bunny Babe"

S, M, L, XL

New

Sleek metallic black jumpsuit with faux fur trim and illusion neckline. Also includes bunny ear headband, gauntlet gloves, belt, and faux fur boot toppers. (Five-Piece Set)



Style 11566

"Queen of the Jungle"

S, M, L, XL

This furry, fabulous costume includes a zip-front romper with over sized hood which can be worn with included fur trimmed skirt. Also includes fur trimmed glovelettes and tail. (Four-Piece Set)

**Style 11131**

"King of the Jungle"

M, L, XL, XXL

Gold stretch velour sleeveless lion top with attached tail and faux-fur hood with ears. Includes matching fingerless gloves. (Pants not included.) (Two-Piece Set)



Pairs with style 10671
"DALMATIAN DIVA"

Dalmatian-print, stretch, crushed velvet dress with hood, faux-fur trim and tail. Includes matching boot covers and dog-collar choker. (Three-Piece Set)

Style 10624

"Dalmatian Darling"

S, M, L, XL

Dreamgirl® What a Character



Style 11961, 12062



Style 11961

"Space Warrior"

S, M, L, XL

New

Out-of-this-world metallic gold bodysuit with cut out collar design and snap crotch closure. Also includes gold wrist gauntlets and matching skirt with two-way zipper. (Wig and space gun not included)
(Three-Piece Set)

(Shown With)
Style 12062
"Crimp Wedge Bob"
Adjustable

Style 9971
"Galaxy Gun"
O/S





New

Style 11972

"Spaced Out"

S, M, L, XL

This super-fun space dress has a shimmering mirror like print, oversized collar and tubular hemline. Includes antennae headband and belt. (Gloves, space gun and wig not included) (Three-Piece Set)

(Shown With)
Style 9969
"Gauntlet Gloves"
O/S

Style 12064
"Medium Length Bob w/tinsel"

Style 9971
"Galaxy Gun"
O/S

light up costume



Style 11929

"Glam Rocker"

S, M, L, XL

This electrifying silver rocker dress has a lightning bolt screen print and an oversized collar. (Guitar and gloves not included)
(One-Piece Set)

(Shown With)
Style 11911
"Rock Star Wig"

Boots by Ellie Shoes
Style 420-HERO

New



New

Style 11947

"Rocker Babe"

S, M, L, XL

Rich purple duster with shimmering shoulder detail and cuff ruffles. Includes matching romper with ruffled neckline detail, and studded belt. (Guitar not included)
(Three-Piece Set)

(Shown With)
Style 7034
"Fishnet Pantyhose"
O/S



Style 11928

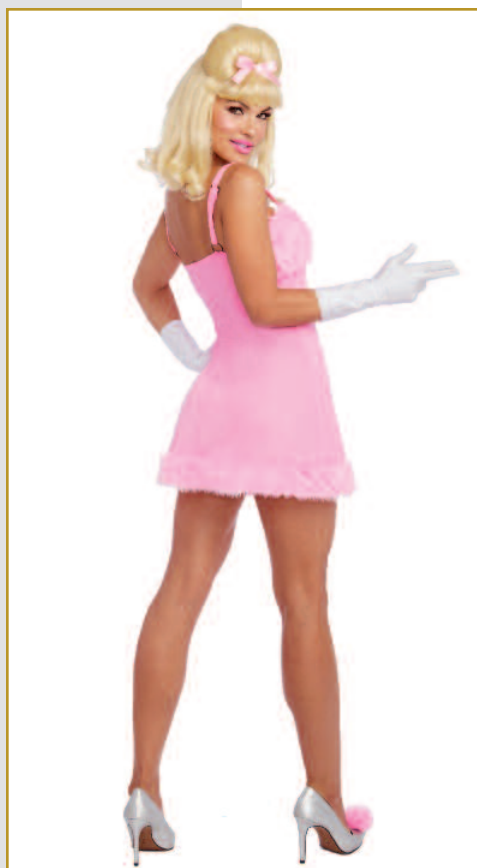
"Femme Fatale"

S, M, L, XL

New

This adorable pink dress has a faux-fur bra section and hemline. Also includes a satin ribbon bow barrette, and shoe pom poms. (Wig not included) (Three-Piece Set)

(Shown With)
Style 11912
"Retro Bouffant Wig"



New

Style 11964

"Wild West"

S, M, L, XL

Adorable Western styled faux leather dress with silver star print bra cups. Cowboy hat with studded trim, choker, western belt and fringed sleeves also included. (Five-Piece Set)



Style 11936

"Career Cutie"

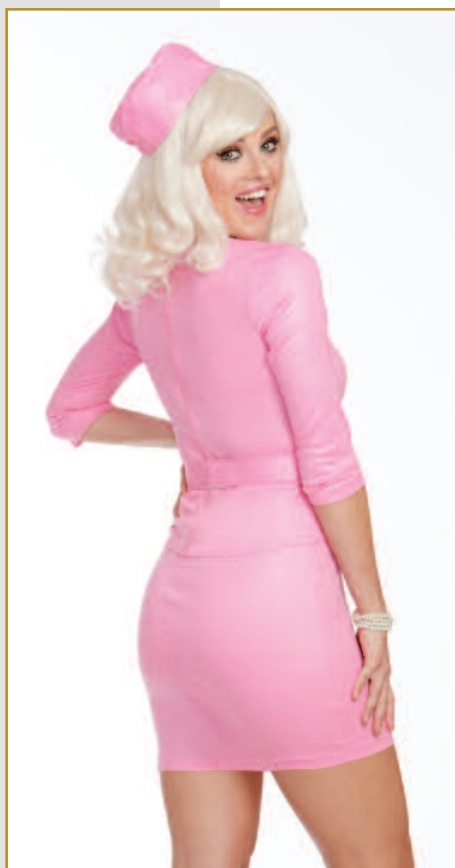
S, M, L, XL
1X, 2X, 3X



Adorable peplum suit style dress which includes belt, pillbox hat, and faux pearl necklace.
(Four-Piece Set)

(Shown With)
Style 11873
"Mid-length Curly Wig"

New



Style 9959

"Cat Fight"

S, M, L, XL

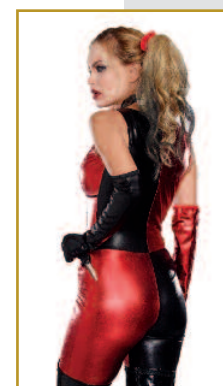
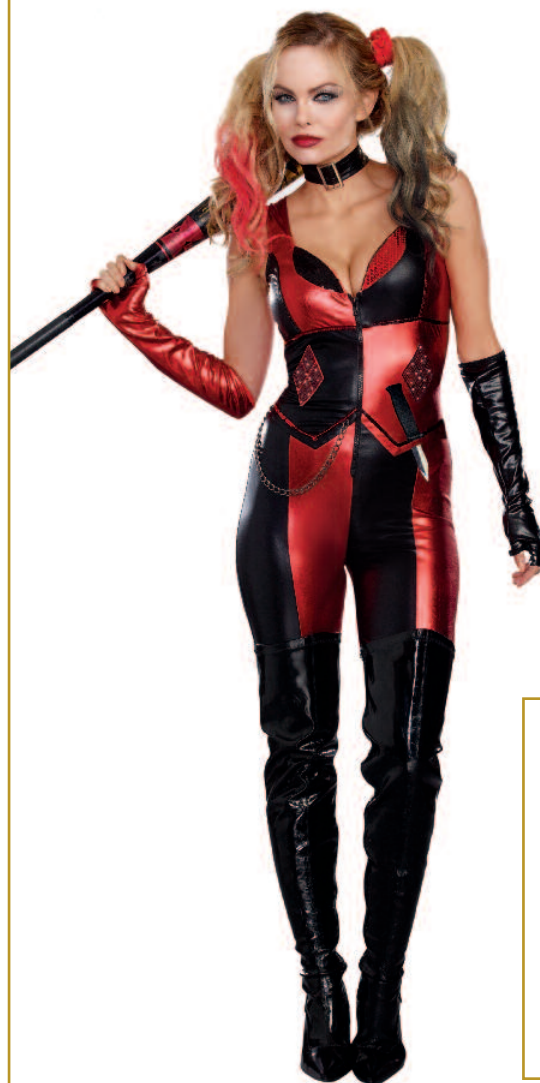
Metallic black, stretchy, zip-front jumpsuit with ripped front pant leg detailing and attached tail. Includes headpiece with mask and belt. (Whip and jewelry not included.) (Three-Piece Set)

**Style 10321**

"Harlequin Blaster"

S, M, L, XL

Sleek metallic jumpsuit with zipper-front bodice, sequin detailing and an attached chain. Includes fingerless gloves, choker and knife. (Hair ties and bat not included.) (Four-Piece Set)

**Style 11573**

"Slaying It"

S, M, L, XL

Fierce bronze metallic warrior dress with hi-lo hemline and rhinestone embellishment. Also includes jeweled headpiece and wrist gauntlets. (Jewelry not included.) (Three Piece Set)

**Style 11598**

"Defender"

S, M, L, XL

Be ready to save the day in this body slimming, sleek jumpsuit. Costume includes padded chest and shoulder armor. (Gloves and weapon not included.) (Two-Piece Set)



Style 11629

"Wrestling Champ"

S, M, L, XL

Electrifying fuchsia with turquoise jumpsuit with silver glitter stars and "Champion" belt with velcro back closure. Also includes glittering silver gloves. (Jewelry not included.) (Three-Piece Set)



Style 11552

"Dragon Beauty"

S, M, L, XL

Beautiful white reptile embossed velvet gown with flowing sheer chiffon sleeves, has side slits and a dragon applique. (Wig sold separately.) (One-Piece Set)



(Shown With)
Style 11391
"Long Wavy Wig with
Back Twist"
White
Adjustable

Style 11130

"The Lion Tamer"

S, M, L, XL

Rich red velvet top with gold fringed epaulets, lion head buttons and gold sequin trimmed peplum. Includes stretch leggings, top hat and belt with lion head buckle. (Gloves, whip and jewelry not included.) (Four-Piece Set)



Style 10671

"Dalmatian Diva"

S, M, L, XL
1X, 2X, 3X



Dalmatian-print midi dress with front zipper, faux-fur collar and ribbon-tie back slit. Includes shiny vinyl belt and bone accessory. (Wig, jewelry and cigarette holder not included.) (Three-Piece Set)



(Shown With)
Style 10675
"Dalmatian Diva
Wig"
O/S

Dreamgirl[®] Extra-Curricular Activities



Styles 8201

Style 8201

"After School Special"

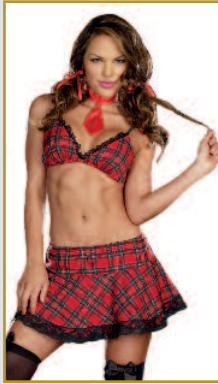
S, M, L, XL

Convertible schoolgirl outfit with button-down preppy top with chenille varsity letter detail and flirty plaid skirt. Coordinating lace-trimmed bra top and necktie included. (Thigh highs and hair bows not included.) (Four-Piece Set)

(Shown With)
Style 10342 "Bow Top
Stockings"
O/S, O/S Queen



New Lower Price



Style 9848

"Fancy Girl"

S, M, L, XL

Woven plaid jacket with matching pleated skirt. (Knee-high socks and cell phone not included.) (Two-Piece Set)

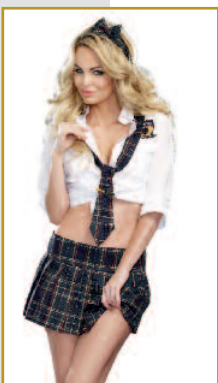


Style 9419

"Prep School"

S, M, L, XL

Button-front, white, collared shirt with a "Manhattan Preparatory School" patch and woven-plaid pleated schoolgirl skirt. Includes tie with clip and headband. (Knee-high socks not included.) (Four-Piece Set)



Style 11581

"Tackle"

S, M, L, XL 1X, 2X, 3X

Playful football jersey with zip sides and matching shorts. Also includes athletic socks. (Bra top and football not included.) (Three-Piece Set)



Style 10322

"World Champion"
(Men's)

M, L, XL, XXL

Black and gold satin robe with tie belt and gold metallic "World Champion" screen print. Includes boxing gloves, shorts, and "World Champion" belt. (Five-Piece Set)



Style 10315

"World Champion"
(Women's)

S, M, L, XL

Black satin boxing robe with belt. Includes lace-up top, boxing gloves and skirt with loop to hold gloves, athletic striping and screen prints. (Five-Piece Set)



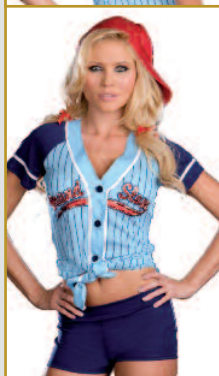
Style 6469

"Grand Slam"

S, M, L, XL
1X/2X, 3X/4X



Stretch-knit, snap-front dress with sequin embroidered "Grand Slam" appliqué and heat transfer number "10" detail on back. Includes stretch-knit short with elastic waist, baseball cap and athletic knee-high socks. (Baseball mitt and baseball not included.) (Four-Piece Set)



Style 10655

"Start Your Engines!"

S, M, L, XL

Sleek zipper-front jumpsuit with checkered sides, "racing" and flame screen-print details and authentic-looking race patches. Includes matching black belt. (Flag not included.) (Two-Piece Set)



Dreamgirl® 24/7 On Call





Styles 11951, 11952 & 11135

New



Style 11951

"Special Ops"
(Women's)

S, M, L, XL

Sleek jumpsuit with zipper front closure and special operations patches. Also includes an armband with a knife, arm tie, leg tie with badge, tactical belt with bullets, handcuffs, knife, and bullet bracelets. (Sunglasses and gloves not Included)
(Ten-Piece Set)

New



Style 11952

"Special Ops"
(Men's)

M, L, XL, XXL

Rugged tactical vest with bullet strips and special operations patches. Includes Swat Cap, bullet strips, knife, half-faced mask and handcuffs. (Gloves, pants and sunglasses not included)
(Six-Piece Set)

New



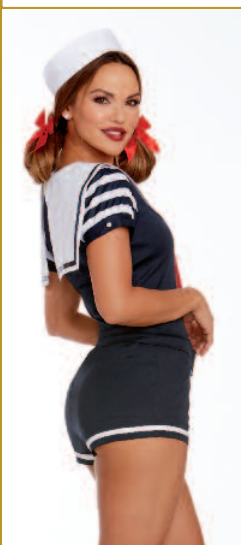
Style 11958

"Seaside Sailor"

M, L, XL, XXL

Ultra-comfortable top with sailor collar and striped detailing.
Also includes the matching shorts and sailor hat.
(Three-Piece Set)

New



Style 11957

"Seaside Sailor"

S, M, L, XL

Adorable romper with sailor collar and stripe detailing.
Also includes a sailor hat and belt. (Hair bows not included)
(Three-Piece Set)

Style 11640

“DEA Agent”
S, M, L, XL

Be ready for action in this navy blue DEA dress with logo on the front and back. Also includes matching hat and badge. Handcuffs, sunglasses, jewelry and gloves not included) (Two-Piece Set)



Style 11628

“The Sergeant”
M, L, XL, XXL

Rugged sleeveless button down police shirt has police patches and two-pocket front. Also includes police hat with badge, Sgt. Dick Spectacular name plate, and tie. (Gloves, handcuffs, and sunglasses not included.) (Four-Piece Set)



Style 8816

“Dirty Cop Officer Anita Bribe”
S, M, L, XL

Black bengaline stretch knit dress with belt and police patches on shoulders. Costume includes police hat with badge pin, “Officer Anita Bribe” nameplate and removable police badge. (Sunglasses, handcuffs, pantyhose and baton not included.) (Five-Piece Set)



Style 8817

“Dirty Cop Officer Ed Banger”
M, L, XL, XXL

Black sleeveless collared shirt with front pockets, police patch and removable neck tie. Includes police hat with badge pin, “Officer Ed Banger” nameplate, removable police badge and arm band. (Sunglasses, handcuffs, baton and pants not included.) (Six-Piece Set)





Sleek navy jumpsuit with shiny patent leather trim. Includes utility belt, police hat with badge, radio/speaker, leg garters, handcuffs, police badge pin and "Lieutenant Ivana Misbehave" nameplate. (Sunglasses and baton not included.) (Eight-Piece Set)

Style 10240

"Lieutenant Ivana Misbehave"

S, M, L, XL



Style A9981

"S.W.A.T. Police"

S, M, L, XL
1X/2X, 3X/4X



Black knit dress with front zipper and "S.W.A.T. Police" screen print on back. Includes hat and police badge. (Baton and sunglasses not included.) (Three-Piece Set)



Style 10719

"Officer Pat U. Down"


S, M, L, XL

Sleek, double-breasted dress with shiny patent leather trim, police badges and "Police" screen print. Includes belt, police hat with badge, handcuffs, fingerless gloves with "Jail Time" screen print and "Officer Pat U. Down" nameplate. (Sunglasses, baton and jewelry not included.) (Seven-Piece Set)



Style 10284

"All Aboard"

S, M, L, XL
1X/2X, 3X/4X 

Adorable retro-styled dress with sailor collar, sequin anchors and a full circle skirt. Sailor hat included. (Earrings not included.) (Two-Piece Set)



Style 11570

"Fighter Pilot"


S, M, L, XL

Stylish pilot's woven dress with military buttons, flight patches and belt, can be unbuttoned to reveal included shorts. (Sunglasses, jewelry and gloves not included.) (Three-Piece Set)



Style 11639

"Keep it Clean"

S, M, L, XL
1X, 2X, 3X 

This flirty maid's costume includes an adorable black dress with white ruffled detailing. Also includes ruffled headpiece, and apron. (Gloves, stockings and feather duster not included.) (Three-Piece Set)

(Shown With)
Style 10342
"Bow Top Stockings"
Black, White
O/S, O/S Queen



Style A8922

"R.eally N.aughty"

S, M, L, XL

Nurse dress with attached apron and nurse hat. (Thigh highs, clipboard and pen not included.) (Two-Piece Set)





Style 10685

"Flight Captain"

S, M, L, XL
1X, 2X, 3X



Midi-length, stretch-knit dress with wings patches and gold detailing. Includes captain's hat, "Mile High Captain" pin and belt. (Four-Piece Set)



Style 5236

"Mile High Pilot Hugh Jorgan"

M, L, XL, XXL

Button front jacket with satin and gold trim details. Includes pilot hat, collar with necktie and removable "Mile High Pilot Hugh Jorgan" name badge. (Pants not included.) (Four-Piece Set)

(Shown With)
Style 6379 "Men's Basic Pant"
M, L, XL, XXL

Dreamgirl® Seasonal Sweeties



Style 11975

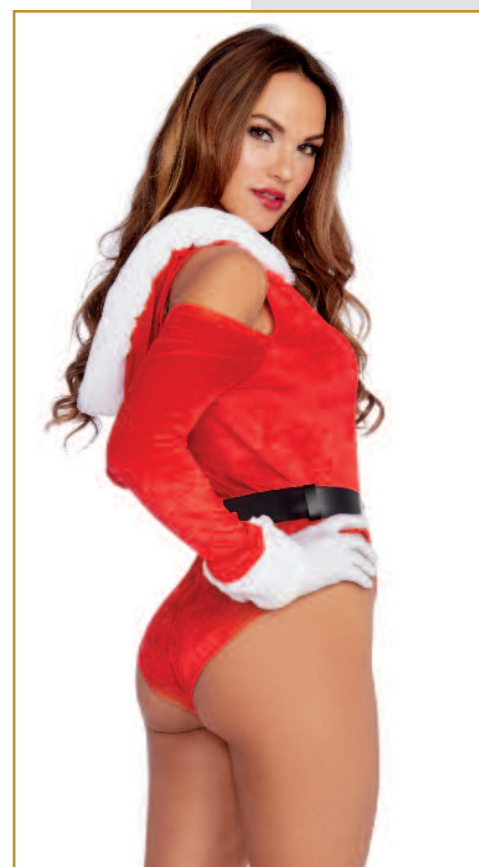
Style 11975

"Santa's Helper"

S, M, L, XL

Adorable hooded bodysuit with faux fur trim and snap crotch closure. Also includes boot toppers and Santa belt. (Three-Piece Set)

(Shown With)
Style 5218
"Luna Glove"
O/S





Style 11625

"Ms. Claus"

XS, S, M, L, XL

Festive and fun stretch velvet red jumpsuit with faux fur trim and oversized hood has an adorable candy cane zipper pull. Also includes belt and fur boot toppers. (Candy Cane and gloves not included.) (Three-Piece Set)

(Shown With) Style 5218
"Luna Glove"
O/S



Style 8870

"Santa Baby"

S, M, L, XL

Sexy Santa wants to make all your wishes come true! Spread some Yuletide cheer in this exquisite red velvet holiday dress with faux fur trim, long sleeve shrug, belt, bell stocking toppers and Santa's hat! Red stretch crush velvet dress with faux fur trim at neckline and hem. Includes matching long sleeve shrug, belt, jingle bell stocking toppers and Santa's hat. Thigh highs and gloves not included) (5 piece set)

(Shown With)
Style 7031
"Sheer Thigh Highs with Back Seam"
O/S





Stretch-knit, strapless dress with attached belt, felt clover detail skirt and puff arm sleeves. Includes hat, pot-of-gold bag and riding crop. (Thigh highs not included.)
(Six-Piece Set)

(Shown With) Style 10342
"Bow Top Stockings"
O/S, O/S Queen

Style 5199

"Spank Me I'm Irish"

S, M, L



Style 11645

"Lucky You"

M, L, XL, XXL

Get lucky in this leprechaun costume that includes a satin vest, collar with bow tie, oversized Leprechaun's hat with buckle and suspenders. (Pants not included)
(Four-Piece Set)



Style 6540

"Miss Liberty"

S, M, L, XL

Stretch-knit, faux-wrap dress with side shirring detail. Includes headpiece and light-up torch with battery.
(Three-Piece Set)

Style 11970X

"Disco Babe"

S, M, L, XL
1X, 2X, 3X

Glittering 1970's disco dress
with bell sleeves, gold sequin
belt and Disco necklace.
(Three-Piece Set)



Style 11936X

"Career Cutie"

S, M, L, XL
1X, 2X, 3X

New

Adorable suit style dress with
belt and peplum. Also includes
pillbox hat and pearls.
(Four-Piece Set)

(Shown With)
Style 11873
"Mid-length Curly Wig"



Style 11942X

"Queen Of De Nile"

S, M, L, XL
1X, 2X, 3X

Exquisite gold shimmering gown with sequin cups and attached sarong. Includes Egyptian collar with attached cape. (Headpiece and scepter not included)
(Two-Piece Set)

(Shown With)
Style 11656
"Cleopatra Headpiece"
O/S

Style 10832
"Egyptian Queen Wig"

New



New



Style 11938X Stunning dress with ombre sequin design and shimmering neckline piece. Includes sequin headband with ostrich feather.
 "Roxy's Revenge" (Boa, gloves and cigarette holder not included)
 (Two-Piece Set)
 S, M, L, XL
 1X, 2X, 3X
 (Shown With) Style 5218
 "Luna Glove"
 O/S

New



Gothic styled dress with large hook and eye closures and jagged hemline. Includes hooded lace cape, and wolf head choker.
 (Gloves, basket and fishnets not included)
 (Three-Piece Set)
 (Shown With) Style 7819
 "Dominique Glove" O/S
 Style 7034
 "Fishnet Pantyhose" O/S

Style 11943X
 "Big Bad Red"
 S, M, L, XL
 1X, 2X, 3X

➤ *New*



Style 11963X Ultra-flattering, off-the-shoulder pirate dress with multi-tiered skirt and attached faux leather vest. Head scarf also included.
 "Holy Ship"
 (Women's)
 (Sword not included)
 (Two-Piece Set)

S, M, L, XL
 1X, 2X, 3X

➤ *New*



Animal printed off-the-shoulder dress with bone trim detail and multi-tiered skirt. VooDoo Headpiece with feathers and skull, is also included. (Scepter, bone necklace, and skull heads in the models hand, are not included)
 "Voodoo Priestess"
 (Two-Piece Set)

Style 11967X

S, M, L, XL
 1X, 2X, 3X

New



Style 10719X

"Officer Pat U. Down"

S, M, L, XL
1X, 2X, 3X

Sleek, double-breasted dress with shiny patent leather trim, police badges and "Police" screen print. Includes belt, police hat with badge, handcuffs, fingerless gloves with "Jail Time" screen print and "Officer Pat U. Down" nameplate. (Sunglasses, baton and jewelry not included.) (Seven-Piece Set)

New



Style 10685X

"Flight Captain"

S, M, L, XL
1X, 2X, 3X

Midi-length, stretch-knit dress with gold detailing. Includes pilot hat, "Mile High Captain" pin and belt. (Four-Piece Set)

Style 10210X

"Downton Doll"

S, M, L, XL
1X/2X, 3X/4X

Exquisite midnight-blue, embossed stretch velvet dress with jeweled neckline and sequin-fringe trim. Includes jeweled headpiece with ostrich feather. Jewelry, boa, cigarette holder and gloves not included.) (Two-Piece Set)

(Shown With)
Style 5218
"Luna Glove"
O/S



Style 10700X

"Swanky Flapper"

S, M, L, XL
1X, 2X, 3X

1920's-inspired dress with off-the-shoulder fringe detail and gold intricately-embroidered neckline & hemline trim. Includes gold sequined headpiece with ostrich feather. (Gloves, boa, jewelry and cigarette holder not included.) (Two-Piece Set)

(Shown With)
Style 5218
"Luna Glove"
O/S



Style 11545X

"Miss Ritz"

S, M, L, XL
1X, 2X, 3X

Exquisite rich purple flapper dress with off-the-shoulder fringe sleeves and back zipper. Includes sequin headpiece with ostrich feather. (Gloves, cigarette holder, and jewelry not included.) (Two-Piece Set)



Bewitching black velvet gown with metal neckline closures and strategically placed purple lace-up back detailing. Includes belt, sheer jacket and witch hat with spider. (Broom not included.)
(Four-Piece Set)

(Shown With) Style 11397 "Long Curly Ombre Three-Piece Hair Extension" Gun Metal/ Lavender Lilac O/S



Style 11151X

"Bewitching Beauty"

S, M, L, XL
1X, 2X, 3X



Style 11636X

"The Black Widow"

S, M, L, XL
1X, 2X, 3X

This captivating costume includes a sleek, strappy off-the-shoulder gown with jewel encrusted spider, a high scalloped slit, and an attached spider web cape. (Jewelry and headpiece not included.)
(One-Piece Set)

(Shown With)
Style 11636
"Spider Headpiece" O/S



Style 10639X

"Frightfully Beautiful"

S, M, L, XL
1X, 2X, 3X

Spooky, luxe black velvet gown with sequin-appliqué bodice, lace paneling in skirt and lace waterfall sleeves. (Rose and jewelry not included.)
(One-Piece Set)

(Shown with)
Style 11679
"Long Straight Wig"

Style 11180X

"Angel of Darkness"
S, M, L, XL
1X, 2X, 3X

Radiant black dress with exquisite neckline appliqué, sequin trim and hi-low hemline skirt with layers of glittered feather-shaped petals. Includes black feather angel wings and sequin halo headband. (Gloves not included.) (Three-Piece Set)

(Shown With)
Style 10341 "Midnight Madness
Gloves"
O/S



Style 11149X

"The Sorceress"
S, M, L, XL
1X, 2X, 3X

Exquisite midnight blue velvet gown with attached sparkling silver mystical-print sheer cape. Includes shimmering rhinestone headpiece. (Scepter not included.) (Two-Piece Set)



Style 10680X

"Lady of The Dead"
S, M, L, XL
1X, 2X, 3X

Flirty sugar skull dress with ruffled neckline, brightly-colored skeleton screen print, satin ribbon belt at waist and multi-tiered skirt with sugar skull detailing. Includes beaded cross necklace. (Headpiece and gloves not included.) (Three-Piece Set)

(Shown With)
Style 10341
"Midnight Madness
Gloves"
O/S



Style 11583X

"Medieval Maiden"
S, M, L, XL
1X, 2X, 3X

Simply stunning rich velvet gown with exquisitely sequined embellished front bodice and gold satin trim. Also includes headpiece with veil. (Jewelry not included.) (Two-Piece Set)



Style 10671X

"Dalmatian Diva"

S, M, L, XL
1X, 2X, 3X

Dalmatian-print midi-dress with front zipper, faux-fur collar and ribbon-tie back slit. Includes shiny vinyl belt and bone accessory. (Wig, jewelry and cigarette holder not included.) (Three-Piece Set)

(Shown With)
Style 10675
"Dalmatian Diva Wig"



Style 10290X

"Exquisite Cleopatra"

S, M, L, XL
1X/2X, 3X/4X

Exquisite velvet gown with Egyptian pattern, front slits and gold trim detailing. Includes Egyptian collar and belt. (Jewelry and headpiece not included.) (Three-Piece Set)



Style 9477X

"Little Red"

S, M, L, XL
1X/2X, 3X/4X

Beautifully-detailed fairytale dress with underwire foam cups with pleated ruffles, embroidered heart trim and lace-trimmed apron. Includes full-length, hooded, satin cape. (Basket, thigh highs and satin gloves not included.) (Two-Piece Set)

(Shown With)
Style 10342X "Bow Top
Stockings"
O/S, O/S Queen

Style 5218 "Luna Gloves"
O/S



Style 10669X

"Gypsy"

S, M, L, XL
1X, 2X, 3X

Peasant-style dress with velvet lace-up bodice, gold trim, multi-tiered handkerchief skirt with paisley print and gold coin detailing. Includes matching head wrap with gold coin trim. (Jewelry and tarot cards not included.) (Two-Piece Set)



Style 11171X

"Hippie Hottie"

S, M, L, XL
1X, 2X, 3X

Groovy starburst tie-dye dress and faux-suede fringe vest with removable "Flower Power" and "Peace" pins. Includes head tie, sunglasses, arm tie and peace sign necklace.
(Bracelet not included.)
(Eight-Piece Set)



Style 11134X

"Saloon Gal"

S, M, L, XL
1X, 2X, 3X

Ultra-flattering, western-styled off-the-shoulder mini floral dress with attached skirt and distressed leather-look lace-up waist corset.
(Choker and petticoat not included.)
(Two-Piece Set)



(Shown With)
Style 7034
"Fishnet Pantyhose"
O/S

Style 11106X

"Disco Diva"

S, M, L, XL
1X, 2X, 3X

Foxy black knit dress with metallic holographic disco dot, sweetheart neckline and side slit. Includes stretch pink sequin belt and disco ball necklace.
(Additional jewelry not included.)
(Three-Piece Set)



Style 11639X

"Keep It Clean"

S, M, L, XL
1X, 2X, 3X

This flirty maid's costume includes an adorable black dress with white ruffled detailing. Also includes ruffled headpiece, and apron.
(Gloves, stockings and feather duster not included.)
(Three-Piece Set)



Style 11581X

"Tackle"

S, M, L, XL
1X, 2X, 3X

Playful football jersey with zip sides and matching shorts with athletic detailing. Also includes athletic socks. (Football and bra top not included)
(Three-Piece Set)



Style 10284X

"All Aboard"

S, M, L, XL
1X/2X, 3X/4X

Adorable, retro-styled dress with sailor collar, sequin anchors and full circle skirt. Includes matching sailor hat.
(Two-Piece Set)



Style 6469X

"Grand Slam"

S, M, L, XL
1X/2X, 3X/4X

Stretch-knit, snap-front dress with sequin embroidered "Grand Slam" appliqué and heat transfer number "10" detail on back. Includes stretch-knit short with elastic waist, baseball cap and athletic knee high socks.
(Earrings not included.)
(Four-Piece Set)



Style A9981X

"S.W.A.T. Police"

S, M, L, XL
1X/2X, 3X/4X

Black knit dress with front zipper and "S.W.A.T. Police" screen print on back. Includes hat and police badge. (Baton and sunglasses not included.)
(Three-Piece Set)



Dreamgirl Accessories

Shown with 11885 Jewel Tone Rainbow Wig & 11908 Extra Long Beach Wave with Bangs Wig

Styles 8358, 9544, 11979, 11885, 11908

➤ *New*



GET THE LOOK

Glow-in-the-dark halter skeleton dress.
(Fishnets and wig not included)
(One-Piece Set)

(Shown With) Style 7034
"Fishnet Pantyhose"
O/S

Style 11979

"Skeleton Dress"

S, M, L, XL



Style 10003

"Day of the Dead
Headpiece"

O/S

Headband with roses and
black lace veil.
(Jewelry not included.)
(One-Piece Set)



Style 8358

"Pretty N' Peasant"

Black, Red, White

S/M, M/L

Sexy off-the-shoulder knit
top with elastic
ruffled detail and bow
accent. Great starter
top for many costume
ideas.
(One-Piece Set)



Style 9544

"Ruffled Skirt"
S, M, L, XL

Black satin multi-layered
ruffled skirt with side zipper
can be used to
create many different
costumes.
(One-Piece Set)



Shown with 11329 Extra-Long
Haunted Wig

GET THE LOOK



Style 11651

"Mystical Ram's Horn
Headpiece"

O/S

Ram's Horn headpiece with black roses,
rhinestones and chain detailing.
(One-Piece Set)

New



Style 11973

"Pentagram Starter
Dress"

S, M, L, XL

Sleek black dress with pentagram neckline design.
(Wig and fishnet stockings not included)
(One Piece Set)

(Shown With) Style 7034
"Fishnet Pantyhose"
O/S



Chic black sheer long sleeve dress
with vampire bat motif.
(Bra top not included)

(Shown With)
Style 4575 "Roxie Hot Short"
Black, White
S/M, M/L, 1X/2X, 3X/4X

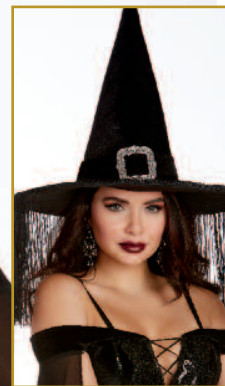
Style 11655
"Vampire Bat Dress"

S/M, M/L



Shown with 11350 Long Wavy
Ombre Layered Wig

GET THE LOOK



Black velvet witch hat with antiquated style buckle and fringe.
(One-Piece Set)

Style 11950
"Wicked Witch Hat"

O/S

Style 11984

"Spooky Bodysuit"

S/M, M/L

New

Sleek black bodysuit
with jagged edged hemline
and snap crotch.
(One-Piece Set)

(Shown with)
Style 12070
"Loose Beach Wave Bob with
Dark Roots"

Style 7034
"Fishnet Pantyhose"
O/S



(Shown With) Style 11950 "Wicked Witch Hat"





Black bodysuit with studded pentagram neckline and snap-crotch closure. (One-Piece Set)

Pair with Dreamgirl's "Sheer Tie-Front Skirt" to complete your wicked look.

Style 10830
"Evilicious Bodysuit"

S/M, M/L



GLOWS IN THE DARK



Fun black bodysuit with glow-in-the-dark Jack-o'-lantern face, strappy neckline and snap-crotch closure. (One-Piece Set)

Pair with Dreamgirl's "Sheer Tie-Front Skirt" to complete your spirited look.

Style 12211
"Halloween Hottie Bodysuit"

S/M, M/L



White bodysuit with ghost-face screen print, halter neckline and snap-crotch closure. (One-Piece Set)

Pair with Dreamgirl's "Iridescent Sparkly Sheer Skirt" to complete your spooky look.

Style 12212
"Boo-dy Suit"

S/M, M/L

Style 11986

"Vampire Cape"

O/S

New

Alluring black lace vampire
cape with red satin collar.
(Dress, bodysuit, headpiece
and fishnets not included)
(One-Piece Set)

(Shown With)
Style 11657
"Drop Dead Beautiful
Headpiece"
O/S

Style 10830
"Evilicious Bodysuit"
S/M, M/L

Style 7034
"Fishnet Pantyhose"
O/S





Gothic-inspired black lace hooded cape
with ribbon-tie front closure.
(One-Piece Set)

(Shown With)
Style 11151
"Bewitching Beauty"
S, M, L, XL

Style 11192

"Lace Cape"

Black, Red

O/S



Rich black velvet cape with rose detail and velcro closure.
(One-Piece Set)

(Shown With)
Style 11151
"Bewitching Beauty"
S, M, L, XL

Style 11551

"Vamp Cape"

O/S



Sheer tulle maxi skirt with satin
waistband and tie closure.
(One-Piece Set)

Style 10831

"Sheer Tie-Front Skirt"

S/M, M/L

New



Style 11982

"Black Veil Headpiece"

O/S

Stunning layered black veil headband with black rose trim.
(One-Piece Set)

(Shown With) Style 5832
"Basic Black Dress"
S, M, L, XL

New



Style 11983

"Lacy Gloves"

O/S

Rich black velvet gauntlet gloves with
scalloped lace ruffle.
(One-Piece Set)

Style 11651

"Mystical Ram's Horn Headpiece"

O/S

Ram's Horn headpiece with black roses, rhinestones and chain detailing.
(One-Piece Set)

**Style 10003**

"Day of the Dead Headpiece"

O/S

Headband with roses and black lace veil.
(Jewelry not included.)
(One-Piece Set)

**Style 11659**

"Spider Headpiece"

O/S

Spooky-licious spider headpiece with large spider with black rhinestone eyes and veil.
(One-Piece Set)

**Style 11650**

"Unicorn Headpiece"

O/S

Mystical black unicorn headpiece with roses, chains and rhinestone trim.
(One-Piece Set)

**Style 11657**

"Drop Dead Beautiful Headpiece"

O/S

Hauntingly beautiful headpiece with black roses, rhinestone embellishment and chain detailing.
(One-Piece Set)

**Style 11194**

"Gothic Headpiece"

O/S

Headpiece with red & black flowers, skulls and attached black tulle veil.
(One-Piece Set)



Shown with 11324 Long Straight Ombré Wig



Style 11656

"Cleopatra Headpiece"

O/S

Exquisite gold Cleopatra headpiece with Cobra, turquoise rhinestone embellishment and gold beads. (Egyptian/Cape Collar not included) (One-Piece Set)



Style 11974

"Goddess Basic Dress"

S, M, L, XL

Gold metallic goddess dress with tie front waist detail. (Headpiece not included) (One-Piece Set)

(Inset Shown With) Style 11656 "Cleopatra Headpiece" O/S



Style 10329

"Pharaoh Headpiece"

O/S

Black velvet and gold satin ribbon Egyptian headpiece. (Cape/collar and necklace not included.) (One-Piece Set)



Exquisite rhinestone headpiece has clips on either side for attaching to hair.
(One-Piece Set)

Style 9520
"Glittering Rhinestone Headpiece"

O/S



Magnificent gold headpiece dripping in rubies and gold coins. (Necklace not included.)
(One-Piece Set)

Style 9516
"Dripping Rubies Headpiece"

O/S



Golden headpiece with cascading rhinestones and adjustable back.
(One-Piece Set)

Style 9515
"Shimmer Rhinestone Headpiece"

Gold/Black, Gold/Crystal

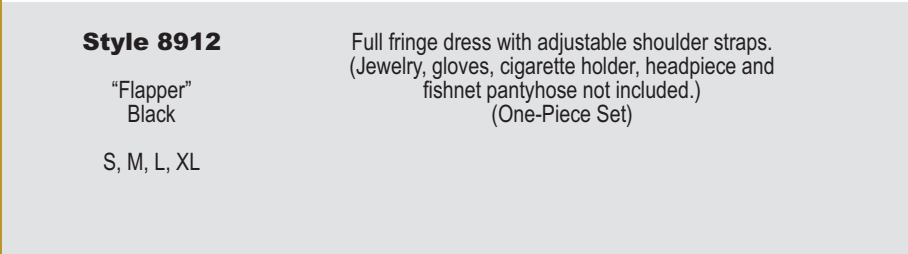
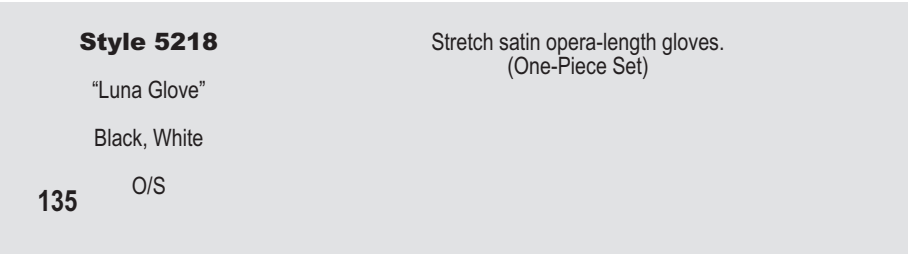
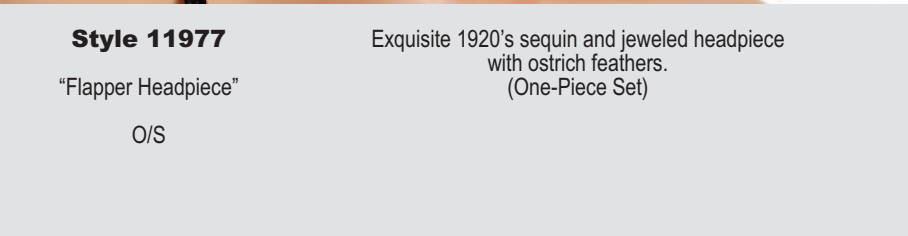
O/S



Gold metal crown with coins.
(Earrings not included.)
(One-Piece Set)

Style 9523
"Shimmering Gold Coin Crown"

O/S





Style 11648

"Disco Mania Top"

S/M, M/L

Multi-color disco dot tie front top with bell sleeve. (One-Piece Set)

Style 11649

"Dancing Queen Pants"

S/M, M/ L

Shimmering black disco pants with disco dot print bell bottoms. (One-Piece Set)

Style 9605

"Men's Disco Pant"

M, L, XL, XXL

Men's polyester flare-legged disco pants with shiny foil dot at hem. Elastic-back waist allows for adjustability. (One-Piece Set)

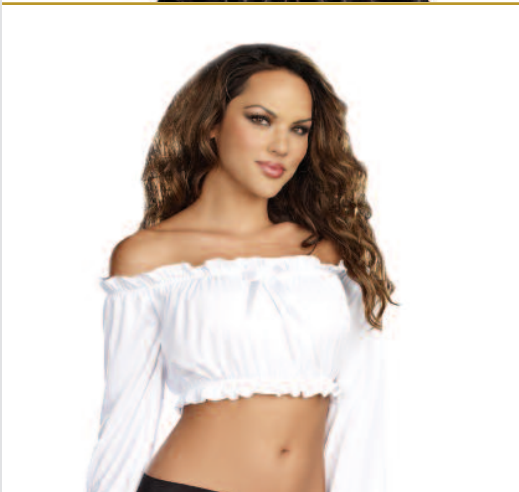
Style 8358

"Pretty N' Peasant"

Black, Red, White

S/M, M/L

Sexy off-the-shoulder knit top with elastic ruffled detail and bow accent. Great starter top for many costume ideas. (One-Piece Set)



Style 9544

"Ruffled Skirt"

S, M, L, XL

Black satin multi-layered ruffled skirt with side zipper can be used to create many different costumes. (One-Piece Set)



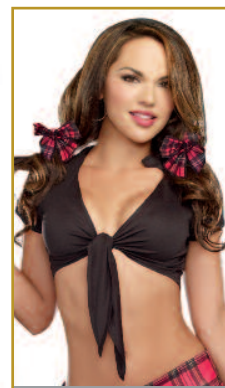


Off-the-shoulder stretch knit top with blousy shirring and satin bow detail on neckline.
(One-Piece Set)

Style 8947
"Ho Garden Top"
S/M, M/L



Stretch-knit, plunging-neckline shirt with cap sleeve. Great starter shirt for many costume ideas.
(One-Piece Set)



Style 8355
"All Tied Up"
Black, White
S/M, M/L



Men's tricorn hat with attached headwrap and synthetic dreadlocks.
(One-Piece Set)

Style 10800
"Pirate Hat"
(Men's)
O/S



Large velvet pirate hat with gold trim, satin bows and lace detail.
(One-Piece Set)

Style 10799
"Pirate Hat"
(Women's)
O/S

Style 11188

"Mermaid Headpiece"

O/S

Shimmering mermaid headpiece with stretch sequin band, sequin fringe and faux shell, starfish, pearl and rhinestone details.
(One-Piece Set)

**Style 11199**

"Unicorn Headpiece"

O/S

Mystical headpiece with flowers, silver stars and unicorn horn & ears.
(One-Piece Set)

**Style 11191**

"Iridescent Sparkly Skirt"

S/M, M/L

Shimmering white open-front holographic sheer skirt with ribbon waist band and tie-front closure.
(One-Piece Set)

**Style 11186**

"Mermaid Bra"

S/M, M/L

Shell-shaped underwire foam cup bra with star fish sequin appliqué and draped faux-pearl detailing.
(One-Piece Set)

**Style 11185**

"Mermaid Skirt"

S/M, M/L

Brilliant blue holographic-print mermaid skirt with three strands of faux-pearls, contrast fish tail and back slit.
(One-Piece Set)

New



Style 11978

"Fairytale Starter Dress"

S, M, L, XL

Adorable fairytale dress with attached apron.
(Headband and stockings not included)
(One-Piece Set)



Style 8909

"Blue Gingham Dress"

S, M, L, XL

Blue and white checked dress with white
chiffon sleeves. (Thigh highs, hair bows,
petticoat, dog and basket not included.)
(One-Piece Set)

New



Style 11980

"Stars & Stripes Dress"

S, M, L, XL

Patriotic halter dress with stars and stripes.
(Flag and earrings not included)
(One-Piece Set)



One-shoulder, animal-print, brushed-knit dress.
(Bone barrette not included.)
(One-Piece Set)

Style 8910

"Cave Girl"

S, M, L, XL



Silver galaxy gun with lights and sound. Requires AA batteries. (Batteries not included.)
(One-Piece Set)

Style 9971

"Galaxy Gun"

O/S



Silver plastic co-ed sunglasses.
(One-Piece Set)

Style 9970

"Galaxy Glasses"

O/S



Silver fingerless gloves.
(One-Piece Set)

Style 9969

"Gauntlet Gloves"

O/S



(Style Shown)
11972
"Spaced Out"
and
Style 12064
"Medium Length
Bob with Tinsel
Wig"



Style 7819

"Dominique Glove"

O/S

Shiny, stretch-knit, opera-length gloves.
(One-Piece Set)



Style 10341

"Midnight Madness
Gloves"

O/S

Black opera-length fingerless gauntlet gloves
with venice lace design.
(One-Piece Set)



Style 5218

"Luna Glove"

Black, White

O/S

Stretch satin opera-length gloves.
(One-Piece Set)





Basic stretch-knit hot short with elastic waist.
(One-Piece Set)



Style 4575

"Roxie Hot Short"
Black, White

S/M, M/L
1X/2X, 3X/4X



Glossy, stretch-knit hot short with elastic waist.
(One-Piece Set)

Style 9994

"Liquid Roxie Short"
S/M, M/L



Men's basic pant with elastic
waistband and pockets.
(One-Piece Set)

Style 6379

"Men's Basic Pant"
Black

M, L, XL, XXL



Style 0072

"Basic Unitard"

S/M, M/L

Cotton/Spandex adjustable-strap unitard.
(One-Piece Set)



Style 0072X

"Basic Unitard"

1X/2X, 3X/4X



Cotton/Spandex adjustable-strap unitard.
(One-Piece Set)



Style 9558

"Liquid Unitard"

S/M, M/L

Glossy, stretch-knit unitard can be used to
create many different costumes.
(One-Piece Set)



Style 5832

"Basic Dress"
Black

S, M, L, XL

Stretch microfiber dress with internal stretch bra.
Add costume accessories to this dress to create
many different costume options.
(One-Piece Set)



Sheer thigh-high stockings with
two sets of bows with pins.
(One-Piece Set)

Style 10342

"Bow Top Stockings"

Black, White

O/S, O/S Queen





Style 0220H

“Lace-Up Boot
Pantyhose”
O/S

Sheer nude pantyhose with black opaque
knitted lace-up boot design. Pantyhose can
be worn with lace-up detail in the front or in the back.
(One-Piece Set)



Style 7034

“Fishnet Pantyhose”
O/S

Fishnet pantyhose with back seam.
(One-Piece Set)



Style 0217H

“Sheer Pantyhose with
Garters”
O/S

Sheer pantyhose with opaque knitted
garters and thigh high stocking details.
(One-Piece Set)



Style 0215H

“Fishnet Raw
Top Stockings”
O/S

Raw-top, diamond-net thigh-high stockings.
(One-Piece Set)
(shorts with garters not included)



Sheer thigh highs with back seam.
(One-Piece Set)

Style 7031

"Sheer Thigh Highs
with Back Seam"

Black, Red, White
O/S



Sheer thigh highs with stay-up silicone lace top.
(One-Piece Set)

Style 7030

"Sheer Thigh Highs"

Black, White

O/S, O/S Queen



Style 7007

"Tutu Petticoat"

Black, White

O/S

Multi-layered tulle tutu
petticoat with
elastic waistband.
(One-Piece Set)



Style 8964

"Fairytale Petticoat"

Black, White

O/S

Multi-layered sheer mesh
petticoat with
high-low hemline, satin
ribbon edging
and back bow.
(One-Piece Set)



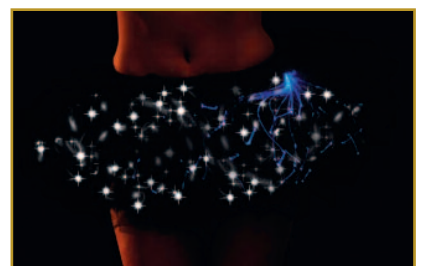
Style 7846

"Light-Up Tutu"

Black

O/S

Light-up tutu interlaced with
fiber optic lights
with hidden pocket for
on/off switch. Batteries and
instructions included.
(One-Piece Set)



Style 11577

"Drop Dead Beautiful"

S, M, L, XL

Hauntingly beautiful vampire dress with rhinestone encrusted bleeding heart design and hi-low scalloped hemline. Removable cape has adjustable straps and vampire collar. (Headpiece and gloves not included.) (Two-Piece Set)



Style 11577X

"Drop Dead Beautiful"

1X, 2X, 3X

Hauntingly beautiful vampire dress with rhinestone encrusted bleeding heart design and hi-low scalloped hemline. Removable cape has adjustable straps and vampire collar. (Headpiece and gloves not included.) (Two-Piece Set)



Style 11135

"S.W.A.T. Police"

S, M, L, XL

Zipper-front navy romper with police patches and vinyl collar. Includes handcuff belt, hat, whistle and zipper-front skirt with "Bad Ass" back screen print and front patch. (Sunglasses, earrings and baton not included.) (Five-Piece Set)



Style 11635

"Officer Lauren Order"

S, M, L, XL

This sleek, ultra-flattering police costume includes a jumpsuit with police patches, police hat with badge, and Officer Lauren Order name plate. Costume also includes a very unique waist cincher belt with handcuff detailing and handcuffs. (Sunglasses, gloves and baton not included.) (Four-Piece Set)



Style 11166

"Nefertiti"

S, M, L, XL

Breathtaking gold-printed cerulean blue velvet gown with gold pleated hemline. Includes belt with jeweled buckle, gold arm bands, jeweled collar with attached gold cape and Nefertiti headpiece with rhinestone snake. (Ankh staff not included.) (Five-Piece Set)



Style 11165

"Kitty Of De Nile"

S, M, L, XL

Shimmering black jumpsuit with elaborate gold trim and removable tail. Includes Egyptian-print collar, skirt and headpiece with attached cat ears. (Wig not included.) (Five-Piece Set)



Style 11176

"Shell Yeah!"

S, M, L, XL

Exquisite dark mermaid halter gown with shell shaped underwire foam cups, holographic printed silver scales and mermaid tail with back slit. Includes sequin starfish barrette. (Jewelry not included.) (Two-Piece Set)



Style 11175

"On The Hunt"

M, L, XL, XXL

Hunting vest with bullet strip and "On The Hunt" patch. Includes camouflage top and matching hat. (Rifle not included.) (Two-Piece Set)



Style 11187

"Mermaid Bodysuit"

S/M, M/L

Brilliant blue bodysuit with strategically-placed metallic foil-printed shells, adjustable straps and snap-crotch closure. (One-Piece Set)



Style 10005

"Ms. Bones Hat"

O/S

Black top hat with skeletons and attached long tulle veil. (Jewelry not included.) (One-Piece Set)



Costume Collection Guide

The option to place orders, check inventory & track order status is now at your fingertips... log onto www.DGorders.com!



Women's US Size Chart															
	REGULAR SIZES									PLUS SIZES					
	XS	S	M	L	XL	S/M	M/L	L/XL	O/S	1X/2X	3X/4X	1X	2X	3X	O/S QUEEN
SIZE	0-2	2-6	6-10	10-14	14-16	2-8	8-14	14-16	2-14	16-20	22-24	16-18	20-22	24-26	16-22
CORSET SIZE		32	34	36	38							40	42	44	
CUP	A	A/B	B/C	C/D	D/E	A/B	B/C	C/D	B/C	D/DD	DD	D/DD	DD/DDD	DDD/F	D/DD
BUST	30"-32"	32"-34"	34"-36"	36"-38"	38"-40	32"-34"	36"-38"	38"-40	32"-38"	40"-46"	46"-52"	44"-46"	48"-50"	52"-54"	40"-50"
WAIST	23"-25"	25"-27"	27"-29"	29"-31"	31"-33"	25"-27"	28"-32"	31"-33"	24"-31"	36"-42"	42"-46"	38"-40"	42"-44"	46"-48"	36"-44"
HIP	32"-34"	34"-36"	36"-38"	38"-40"	40"-42"	34"-36"	38"-40"	40"-42"	34"-40"	44"-50"	50"-54"	46"-48"	50"-52"	54"-56"	42"-52"
INSEAM	32"	32"	32"	32"	32"	32"	32"	32"	32"	32"	32"	32"	32"	32"	32"
RISE	6 1/2"-7"	7"-7 1/2"	7 1/2"-8"	8"-8 1/2"	8 1/2"-9"	7 1/2"-8"	8"-8 1/2"	8 1/2"-9"	7 1/2"-8"	9"-9 1/2"	10"-10 1/2"	9"- 9 1/2"	10"- 10 1/2"	11"- 11 1/2"	9"- 10"
WEIGHT	85 lbs-90 lbs	90 lbs-120 lbs	120 lbs-140 lbs	140 lbs-160 lbs	160 lbs-180 lbs	90 lbs-130 lbs	130 lbs-160 lbs	160 lbs-180 lbs	90 lbs-160 lbs	165 lbs-220 lbs	220 lbs-265 lbs	180 lbs-220 lbs	220 lbs-260 lbs	260 lbs-300 lbs	180 lbs-260 lbs

Women's INTERNATIONAL Size Chart															
	REGULAR SIZES									PLUS SIZES					
	XS	S	M	L	XL	S/M	M/L	L/XL	O/S	1X/2X	3X/4X	1X	2X	3X	O/S QUEEN
UK	0-2	6-8	10-12	14-16	16-18	6-10	12-16	16-18	6-16	18-22	24-26	18-20	22-24	26-28	18-24
FRANCE/SPAIN	32-34	34-36	38-40	42-44	44-46	34-38	40-44	44-46	33-44	46-50	52-54	46-48	50-52	54-56	46-52
GERMANY	30-32	32-34	36-38	40-42	42-44	32-36	38-42	42-44	32-42	44-48	50-52	44-46	48-50	52-54	44-50
ITALY	34-36	38-40	42-44	46-48	48-50	38-42	44-48	48-50	38-48	50-54	56-58	50-52	54-56	58-60	50-56
JAPAN	5	7-9	11-13	15-17	19-21	7-13	13-17	19-21	7-17	21-25	25-29	21-23	25-27	29-31	21-25
CUP	A	A/B	B-C	C/D	D/E	A/B	B/C	C/D	B/C	D/DD	DD	D/DD	DD/DDD	DDD/F	D/DD
US CORSET SIZE		32	34	36	38							40	42	44	
BUST	76cm-81cm	81cm-86cm	86cm-91cm	91cm-97cm	97cm-102cm	81cm-86cm	91cm-97cm	97cm-102cm	81cm-97cm	102cm-117cm	117cm-132cm	112 cm -117 cm	122 cm -127 cm	132 cm-137 cm	112 cm- 127 cm
WAIST	54cm-64cm	64cm-69cm	69cm-74cm	74cm-79cm	79cm-84cm	61cm-66cm	71cm-81cm	79cm-84cm	61cm-86cm	91cm-107cm	107cm-117cm	96.5 cm -101.5 cm	107 cm -112 cm	117 cm -122 cm	91cm-112cm
HIP	81cm-86cm	86cm-91cm	91cm-97cm	97cm-102cm	101cm-107cm	86cm-91cm	97cm-102cm	101cm-107cm	91cm-102cm	112cm-127cm	127cm-137cm	117 cm -122 cm	127 cm -132 cm	137 cm -142.5 cm	107cm-135cm
INSEAM	81cm	81cm	81cm	81cm	81cm	81cm	81cm	81cm	81cm	81cm	81cm	81cm	81cm	81cm	81cm
RISE	16cm-18cm	18cm-19cm	19cm-20cm	20cm-22cm	22cm-23cm	19cm-20cm	20cm-22cm	22cm-23cm	19cm-20cm	23cm-24cm	25cm-27cm	23 cm - 24cm	25.5 cm - 26.5 cm	28 cm -29 cm	23cm-25cm
WEIGHT	39kg-41kg	41kg-54kg	54kg-64kg	64kg-73kg	73kg-85kg	41kg-59kg	59kg-73kg	73kg-85kg	41kg-73kg	75kg-100kg	100kg-120kg	81kg- 100kg	100kg- 118kg	118kg- 136kg	82kg-118kg

Costume Collection Guide

United States Dreamgirl Sales Representatives and Showrooms

Gihan Gabor National Sales Manager

Tel. +1-650-888-6000
Email: ggabor@dgbrands.com

Narbeh Sahaghian

International Sales
Tel. +1-323-268-0220 Ext. 254
nsahaghian@dgbrands.com
5548 Lindbergh Lane
Bell, CA 90201

IL, WI, MN

Bonnie W. Brunton
Tel. +1-630-247-8061
Fax +1-866-415-2617
Email: blbrunton@gmail.com
106 W. Wilson St. Suite 5
Batavia, IL 60510

TX, OK, LA, AR, MS

Stacey Singleton
Tel. +1-210-416-1206
Email: Staceysingleton777@yahoo.com

CT, DC, DE, MD, MA, ME, NH NJ, NY, PA, RI, VT

Anthony Stefano
Office +1-201-313-2505
Cell +1-917-681-8214
Fax +1-201-313-2506
Email: AStefano1@verizon.net
250 Gorge Road Suite 8A
Cliffside Park, NJ 07010

Ginger Harrison, West Coast Sales Manager

CA, NV, HI

Cell. 310-351-7130
Tel. +1-323-268-0220 x 204
Fax +1-323-268-4913
Email: gharrison@dgbrands.com

OR, WA, ID, AK, MT

Patty Barrington
Cell. +1-206-724-7479
Tel. +1-206-285-5747
Fax +1-206-282-0210
Email: patty@barringtonsales.onmicrosoft.com
2655 West Viewmont Way West
Seattle, WA 98199

AL, GA, FL, KY, NC, SC, TN, VA, WV

Anne Sabo

Tel. +1-917-983-4470
Email: asabo@dgbrands.com

IN, MI, OH

Titlebaum Sales
Howard Titlebaum
Tel. +1-440-914-0330
Fax +1-440-914-0331
Email: howard@titlebaumsales.com
www.titlebaumsales.com

AZ, CO, IA, KS, MO, ND, NE, NM, SD, UT, WY

Kimberly and Dale Dillon
Toll Free 800-681-1890
Tel. +1-623-582-3085
Fax +1-623-582-3370
Email: dalio@hotmail.com
Email: kimberlys.1@hotmail.com

DREAMGIRL CORPORATE HEADQUARTERS

www.dreamgirldirect.com
Beverly Bowdry
Director of Account Operations
US Toll Free Tel. +1-800-622-5686
US Toll Free Fax +1-800-625-7363
International Tel. +1-323-268-0220
International Fax +1-323-268-4913
Email: bbowdry@dgbrands.com
5548 Lindbergh Lane
Bell, CA 90201



International Dreamgirl Sales Representatives and Showrooms

Africa

Algeria, Botswana, Ivory Coast, Kenya, Libya, Mauritius, Morocco, Nigeria, South Africa, Sudan, Tunisia, Zimbabwe
Canadex International Trading
Hrant (Harry) Kaprielian
5255 Henri Bourassa West, Suite: 200
St Laurent, Quebec, Canada. H4R 2M6
Tel: +1 (514) 337-0946
Fax: +1 (514) 337-0857
Mobile Canada: +1 (514) 578-0946
Email: hk@canadextrading.com
www.canadextrading.com

North America

CANADA

Jolar-Speck Inc.
Caroline Joannis
Tel. (450) 651-5515
(800)565-6527
Email: caroline.joannis@jolarspeck.com
www.jolarspeck.com
2154 rue De La Province
Longueuil, Quebec, Canada J4G 1R7

Oceania

Australia

M Distribution Pty Ltd
PO Box 444
Mudgeeraba QLD
Australia 4213
P: +61 7 5522 1950
E: Sales@metrointeractive.net.au
W: http://metrointeractive.net.au/

Asia

Japan

Big Fish Story, Inc.
#404, 2-22, Jogabori-cho, Nishinomiya, Hyogo,
662-0856, Japan
website: www.bfinfo.com
www.happycostume.com
email: bigfish@bfinfo.com
tel: +81-798-31-7831
contact person: Masashi Shibata

Singapore, Indonesia, Malaysia

FEMME FATALE/DV8 Trading
220 Orchard Road
Midpoint Orchard #02-11A
Singapore 238 852
M: (+65) 8228 9339 T: (+65) 6738 7198
W: u4ria.com.sg | femmefatale.com.sg

Saudia Arabia, Turkey, Bahrain, Kuwait, Qatar, U.A.E., Palestine, Oman, Jordan, Lebanon, Syria, Israel, Iraq, Iran, Egypt, Yemen

Canadex International Trading
Hrant (Harry) Kaprielian
5255 Henri Bourassa West, Suite: 200
St Laurent, Quebec, Canada. H4R 2M6
Tel: +1 (514) 337-0946
Fax: +1 (514) 337-0857
Mobile Canada: +1 (514) 578-0946
Email: hk@canadextrading.com
www.canadextrading.com

Europe

Germany, Austria, Czech Rep., Slovenia, Switzerland, Romania, Netherlands, Italy, Poland

Premium Bodywear AG
Chemnitzer Str. 36-38
09228 Chemnitz/Germany
dreamgirl@prebo.de
P +49/37200/860 608
F +49/37200/860 699
Contact Person: Kathleen Richter

United Kingdom, Ireland

New Temptations Ltd
Address: Central House
2-4 Wellington Grove
Stockport
Cheshire
UK
SK2-6RH
Email: sales@newtemptations.co.uk
Tel: +44 (0)161 480 6204
Website: www.newtemptations.co.uk
Contact: Faye Simcock

Denmark, Sweden, Finland, Norway

Flirt Fashion AB
Drottninggatan 110
11360 Stockholm
Sweden
info@flirtfashion.se
ph +468326550
Contact: Wiggo Berggren

Europe

France, Belgium, Luxembourg, Malta, DOMTOM

CL DIFFUSION
ZA FORET CHATENAY
37210 ROCHECORBON – France
Tel : 0033 247 52 83 56
Website : www.commande-sexy.com
Contact : Margot HERMAN

Greece, Cyprus

ANACO GROUP – A.ANAGNOSTOU & SIA OE
a) CENTRAL OFFICES & WAREHOUSE :
459 STR. KORINTHOU
PATRAS – GREECE
Tel: 0030 2610361610, FAX:
0030328688, Email: anaco@otenet.gr
b) SHOWROOM & OFFICE :
6 STR, SEMITELOU
ATHENS – GREECE
Tel & fax : 0030 210 7470333
www.anacogroup.gr
Contact: Elena Anagnostou

Costume Collection Guide



2020 Costume Collection Poster
24" X 36", 60.96 cm X 91.44
Style: PSTR111



Dreamgirl Costume Catalog
9.5" x 12", 24.13 cm X 30.48 cm
160 pages
Style: 2020-3



This symbol represents items available in Plus Sizes.



This symbol represents costumes with light up features.



This symbol represents convertible costumes that feature removable sections.



This symbol represents items costumes which can be worn multiple different ways.

Costume Collection Guide

STYLE	DESCRIPTION	SIZE	PAGE
0072	Basic Unitard	S/M, M/L	145
0072X	Basic Unitard	1X/2X, 3X/4X	145
0215H	Fishnet Raw Top Stockings	One Size	147
0217H	Sheer Pantyhose With Garters	One Size	147
0220H	Lace-Up Boot Pantyhose	One Size	147
4575	Roxie Hot Short - Black,White	S/M, M/L	144
4575X	Roxie Hot Short - Black,White	1X/2X, 3X/4X	144
5084	Hot Scottie	M, L, XL, XXL	48
5199	Spank Me I'm Irish	S, M, L	110
5218	Black, White - Luna Glove	One Size	135, 143
5236	Mile High Pilot Hugh Jorgan	M, L, XL, XXL	25, 106
5832	Basic Dress	S, M, L, XL	145
6379	Black - Men's Basic Pant	M, L, XL, XXL	144
6469	Grand Slam	S, M, L, XL	98
6469X	Grand Slam	1X/2X, 3X/4X	122
6540	Miss Liberty	S, M, L, XL	110
7007	Tutu Petticoat - Black,White	One Size	149
7030	Sheer Thigh Highs - Black,White	One Size	148
7030X	Sheer Thigh Highs - Black,White	O/S Queen	148
7031	Sheer Thigh Highs w/Back Seam - Blk, Red, Wht	One Size	148
7034	Fishnet Pantyhose - Black	One Size	147
7819	Dominique Glove - Black	One Size	143
7846	Light-Up Tutu - Black	One Size	149
8105	Zoot Suit Riot	M, L, XL, XXL	63
8158	Go Go Gorgeous	S, M, L, XL	71
8190	Gangsta	M, L, XL, XXL	63
8201	After School Special	XS, S, M, L	97
8355	All Tied Up - Black, White	S/M, M/L	138
8358	Pretty n' Peasant - Black, Red, White	S/M, M/L	124, 137
8816	Dirty Cop Officer Anita Bribe	S, M, L, XL	103
8817	Dirty Cop Officer Ed Banger	M, L, XL, XXL	103
8860	He's A God	M, L, XL, XXL	53
8870	Santa Baby	S, M, L, XL	109
8909	Blue Gingham Dress	S, M, L, XL	140
8910	Cave Girl	S, M, L, XL	141
8912	Flapper - Black	S, M, L, XL	135
A8922	R.eally - N.aughty Nurse	S, M, L, XL	105
8947	Ho Garden Top	S/M, M/L	138
8964	Fairytale Petticoat - Black, White	One Size	149
9419	Prep School	S, M, L, XL	97
9452	Fairy-licious	S, M, L, XL	23, 77
9468	Disco Dude	M, L, XL, XXL	12, 70
9469	Disco Doll	S, M, L, XL	12, 70
9477	Little Red	S, M, L, XL	23, 78

STYLE	DESCRIPTION	SIZE	PAGE
9477X	Little Red	1X/2X, 3X/4X	120
9493	Big Bad Wolf	M, L, XL, XXL	17, 78
9515	Shimmer Rhinestone Headpiece - Gld/Cryst, Gld/Blk	One Size	134
9516	Dripping Rubies Headpiece	One Size	134
9520	Glittering Rhinestone Headpiece	One Size	134
9523	Shimmering Gold Coin Crown	One Size	134
9544	Ruffled Skirt - Black	S, M, L, XL	124, 137
9558	Liquid Unitard - Black	S/M, M/L	145
9605	Men's Disco Pant - Black	M, L, XL, XXL	136
9827	Victorious Beauty	S, M, L, XL	43
9838	Good Time Charlie	M, L, XL, XXL	64
9848	Fancy Girl	S, M, L, XL	97
9893	King Of Egypt	M, L, XL, XXL	7, 11, 46
9959	Cat Fight	S, M, L, XL	94
9969	Gauntlet Gloves - Silver	One Size	142
9970	Galaxy Glasses	One Size	142
9971	Galaxy Gun	One Size	142
A9981	S.W.A.T. Police	S, M, L, XL	104
A9981X	S.W.A.T. Police	1X/2X, 3X/4X	122
9994	Liquid Roxie Short - Black	S/M, M/L	144
10003	Day of the Dead Headpiece	One Size	124, 132
10005	Ms. Bones Hat	One Size	150
10210	Downton Doll	S, M, L, XL	64
10210X	Downton Doll	1X/2X, 3X/4X	117
10240	Lieutenant Ivana Misbehave	S, M, L, XL	104
10260	Bloody Handsome	M, L, XL, XXL	35
10284	All Aboard	S, M, L, XL	105
10284X	All Aboard	1X/2X, 3X/4X	122
10290	Exquisite Cleopatra	S, M, L, XL	47
10290X	Exquisite Cleopatra	1X/2X, 3X/4X	120
10297	Hatter Madness (Men's)	M, L, XL, XXL	80
10298	The Sultan	M, L, XL, XXL	79
10315	World Champion (Women's)	S, M, L, XL	26, 98
10321	Harlequin Blaster	S, M, L, XL	94
10322	World Champion(Women's)	M, L, XL, XXL	26, 98
10329	Pharaoh Headpiece	One Size	133
10341	Midnight Madness Gloves - Black	One Size	143
10342	Bow Top Stockings - White, Black	One Size	146
10342X	Bow Top Stockings - White, Black	O/S Queen	146
10624	Dalmatian Darling	S, M, L, XL	22, 84
10639	Frightfully Beautiful	S, M, L, XL	20, 37
10639X	Frightfully Beautiful	1X, 2X, 3X	118
10640	Mr. Fright	M, L, XL, XXL	20, 37
10641	Friday	S, M, L, XL	20, 37

Costume Collection Guide

STYLE	DESCRIPTION	SIZE	PAGE
10649	White Rabbit	M, L, XL, XXL	80
10654	Ramses	M, L, XL, XXL	47
10655	Start Your Engines	S, M, L, XL	98
10663	Wicked, Wicked Witch	S, M, L, XL	36
10669	Gypsy	S, M, L, XL	48
10669X	Gypsy	1X, 2X, 3X	120
10671	Dalmatian Diva	S, M, L, XL	22, 95
10671X	Dalmatian Diva	1X, 2X, 3X	120
10673	Holy Ship	M, L, XL, XXL	77
10680	Lady of the Dead	S, M, L, XL	38
10680X	Lady of the Dead	1X, 2X, 3X	119
10685	Flight Captain	S, M, L, XL	25, 106
10685X	Flight Captain	1X, 2X, 3X	116
10700	Swanky Flapper	S, M, L, XL	63
10700X	Swanky Flapper	1X, 2X, 3X	117
10719	Officer Pat U. Down	S, M, L, XL	25, 104
10719	Officer Pat U. Down	1X, 2X, 3X	116
10799	Pirate Hat (Women's)	One Size	138
10800	Pirate Hat (Men's)	One Size	138
10830	Evilicious Bodysuit	S/M, M/L	128
10831	Sheer Tie Front Skirt - Black	S/M, M/L	130
11106	Disco Diva	S, M, L, XL	70
11106X	Disco Diva	1X, 2X, 3X	121
11122	Hair Band (Men's)	M, L, XL, XXL	13, 72
11123	Hair Band (Women's)	S, M, L, XL	13, 72
11130	The Lion Tamer	S, M, L, XL	22, 95
11131	King Of The Jungle	M, L, XL, XXL	22, 84
11134	Saloon Gal	S, M, L, XL	48
11134X	Saloon Gal	1X, 2X, 3X	121
11135	S.W.A.T Police	S, M, L, XL	150
11138	Cave Man	M, L, XL, XXL	10, 47
11139	Clubbin Cutie	S, M, L, XL	10, 47
11149	The Sorceress	S, M, L, XL	54
11149X	The Sorceress	1X, 2X, 3X	119
11151	Bewitching Beauty	S, M, L, XL	36
11151X	Bewitching Beauty	1X, 2X, 3X	118
11154	Unicorn Beauty	XS, S, M, L, XL	54
11156	Scarecrow	S, M, L, XL	78
11159	Caesar	M, L, XL, XXL	11, 46
11161	Magic Cat	S, M, L, XL	80
11162	Hatter Madness (Women's)	S, M, L, XL	80
11165	Kitty Of De Nile	S, M, L, XL	150
11166	Nefertiti	S, M, L, XL	150
11171	Hippie Hottie	S, M, L, XL	13, 71

STYLE	DESCRIPTION	SIZE	PAGE
11171X	Hippie Hottie	1X, 2X, 3X	121
11172	Hippie Dude	M, L, XL, XXL	13, 71
11175	On The Hunt	M, L, XL, XXL	150
11176	Shell Yeah!	S, M, L, XL	150
11179	Bare Bones Babe	XS, S, M, L, XL	35
11180	Angel of Darkness	S, M, L, XL	21, 53
11180X	Angel of Darkness	1X, 2X, 3X	119
11182	Big Bad Wolf (Women's)	XS, S, M, L, XL	23, 78
11185	Mermaid Skirt	S/M, M/L	139
11186	Mermaid Bra	S/M, M/L	139
11187	Mermaid Bodysuit	S/M, M/L	150
11188	Mermaid Headpiece	One Size	139
11191	Iridescent Sparkly Skirt	S/M, M/L	139
11192	Lace Cape - Black, Red	One Size	130
11194	Gothic Headpiece	One Size	132
11199	Unicorn Headpiece	One Size	139
11545	Miss Ritz	S, M, L, XL	64
11545X	Miss Ritz	1X, 2X, 3X	117
11551	Vamp Cape - Black	One Size	130
11552	Dragon Beauty	S, M, L, XL	9, 95
11555	70's Icon (Women's)	S, M, L, XL	12, 69
11556	70's Icon (Men's)	M, L, XL, XXL	12, 69
11561	Arabian Prince	M, L, XL, XXL	21, 79
11563	Magic Dragon	S, M, L, XL	9, 54
11565	Queen Cleo	XS, S, M, L, XL	11, 46
11566	Queen of the Jungle	S, M, L, XL	84
11570	Fighter Pilot	S, M, L, XL	105
11572	Medusa	S, M, L, XL	53
11573	Slaying It	S, M, L, XL	94
11576	Arabian Princess	S, M, L, XL	21, 79
11577	Drop Dead Beautiful	S, M, L, XL	150
11577X	Drop Dead Beautiful	1X, 2X, 3X	150
11581	Tackle!	S, M, L, XL	97
11581X	Tackle!	1X, 2X, 3X	122
11582	Pagan Witch	S, M, L, XL	36
11583	Medieval Maiden	S, M, L, XL	48
11583X	Medieval Maiden	1X, 2X, 3X	119
11584	Samurai (Women's)	S, M, L, XL	10, 43
11585	Samurai (Men's)	M, L, XL, XXL	10, 43
11588	Cleopatra	S, M, L, XL	11, 46
11593	King of Thrones	M, L, XL, XXL	6, 9, 43
11598	Defender	S, M, L, XL	94
11625	Ms. Claus	XS, S, M, L, XL	109
11627	Mischief In Neverland	XS, S, M, L, XL	23, 77

Costume Collection Guide

STYLE	DESCRIPTION	SIZE	PAGE
11628	The Sergeant	M, L, XL, XXL	25, 103
11629	Wrestling Champ	S, M, L, XL	95
11632	Horror Honey	S, M, L, XL	38
11633	Angel Beauty	S, M, L, XL	21, 53
11636	The Black Widow	S, M, L, XL	35
11636X	The Black Widow	1X, 2X, 3X	118
11637	Wicked Clown	XS, S, M, L, XL	38
11639	Keep It Clean	S, M, L, XL	105
11639X	Keep It Clean	1X, 2X, 3X	121
11640	DEA Agent	S, M, L, XL	103
11645	Lucky You!	M, L, XL, XXL	110
11648	Disco Mania Top	S/M, M/L	136
11649	Dancing Queen Pants	S/M, M/L	136
11650	Black Unicorn Headpiece	One Size	132
11651	Mythical Ram's Horn Headpiece	One Size	125, 132
11655	Vampire Bat Dress	S/M, M/L	126
11656	Cleopatra Headpiece	One Size	133
11657	Drop Dead Beautiful Headpiece	One Size	132
11659	Spider Headpiece	One Size	132
11919	All Dolled Up	S, M, L, XL	60
11920	Gatsby Gal	S, M, L, XL	61
11921	Gatsby	S, M, L, XL	16, 59
11922	Bada-Boom!	M, L, XL, XXL	15, 62
11923	Mummy Dearest	S, M, L, XL	34
11925	Apollo	M, L, XL, XXL	8, 51
11926	Venus	S, M, L, XL	8, 51
11927	Dames Like Us	S, M, L, XL	16, 59
11928	Femme Fatale	S, M, L, XL	91
11929	Glam Rocker	S, M, L, XL	89
11930	Ninja (Women's)	S, M, L, XL	5, 42
11931	Ninja (Men's)	M, L, XL, XXL	5, 42
11932	Glam Witch	S, M, L, XL	30
11934	Madame Skeleton	S, M, L, XL	32
11936	Career Cutie	S, M, L, XL	93
11936X	Career Cutie	1X, 2X, 3X	112
11937	Party At Gatsby's	S, M, L, XL	16, 57
11938	Roxy's Revenge	S, M, L, XL	58
11938X	Roxy's Revenge	1X, 2X, 3X	114
11939	Prince of Darkness	M, L, XL, XXL	4, 28
11940	Princess of Darkness	S, M, L, XL	4, 28
11941	Vengeful Vixen	S, M, L, XL	75
11942	Queen of De Nile	S, M, L, XL	7, 45
11942X	Queen of De Nile	1X, 2X, 3X	113

STYLE	DESCRIPTION	SIZE	PAGE
11943	Big Bad Red	S, M, L, XL	17, 74
11943X	Big Bad Red	1X, 2X, 3X	114
11944	Death Becomes Him	M, L, XL, XXL	31
11945	Monster	M, L, XL, XXL	3, 29
11946	Monster Babe	S, M, L, XL	3, 29
11947	Rocker Babe	S, M, L, XL	90
11948	Ships Ahoy (Men's)	M, L, XL, XXL	18, 76
11949	Bada-Bing!	S, M, L, XL	15, 62
11950	Wicked Witch Hat	One Size	126
11951	Special Ops (Women's)	S, M, L, XL	24, 101
11952	Special Ops (Men's)	M, L, XL, XXL	24, 101
11954	Sun Goddess	S, M, L, XL	52
11955	Rainbow (Women's)	S, M, L, XL	14, 66
11956	Rainbow (Men's)	M, L, XL, XXL	14, 66
11957	Seaside Sailor (Women's)	S, M, L, XL	19, 102
11958	Seaside Sailor (Men's)	M, L, XL, XXL	19, 102
11959	Majestic Warrior	S, M, L, XL	41
11961	Space Warrior	S, M, L, XL	87
11962	Warrior Queen	S, M, L, XL	6, 40
11963	Ships Ahoy (Women's)	S, M, L, XL	18, 76
11963X	Ships Ahoy (Women's)	1X, 2X, 3X	115
11964	Wild West	S, M, L, XL	92
11966	Bunny Babe	S, M, L, XL	83
11967	Voodoo Priestess	S, M, L, XL	33
11967X	Voodoo Priestess	1X, 2X, 3X	115
11969	Groovy Baby	S, M, L, XL	67
11970	Disco Babe	S, M, L, XL	68
11970X	Disco Babe	1X, 2X, 3X	111
11972	Spaced Out	S, M, L, XL	88
11973	Pentagram Dress	S, M, L, XL	125
11974	Goddess Basic Dress	S, M, L, XL	133
11975	Santa's Helper	S, M, L, XL	108
11977	Flapper Headpiece	One Size	135
11978	Fairytale Dress	S, M, L, XL	140
11979	Glow-In-The-Dark Skeleton Dress	S, M, L, XL	124
11980	Stars & Stripes Dress	S, M, L, XL	141
11982	Black Veil Headpiece	One Size	131
11983	Lacy Gloves	One Size	131
11984	Spooky Bodysuit	S/M, M/L	127
11986	Vampire Cape	One Size	129
12211	Halloween Bodysuit	S/M, M/L	128
12212	Boo-dy Suit	S/M, M/L	128

Costume Collection Guide

Group/Section	Page
DREAMGIRL COUPLES Couples and group costumes many categories	3 - 26
HOT HAUNTS Witches & Warlocks, Vampires, Skeletons, Mummies and other creepy creatures	27 - 38
WARRIORS Fantasy, Medieval, Japanese, Chinese	39 - 43
THROUGH THE AGES Prehistoric, Egypt, Medieval/Renaissance, Traditional Europe, Best of the West	44 - 48
MYTHICAL MAGIC Gods & Goddesses, Angels and Unicorns, Sorceress' and Dragons	49 - 54
ROARING 20'S Flappers & Fellas, Showgirls and Gangsters	55 - 64
THROUGH THE DECADES 60's Go-Go's and Hippies, 70's Disco Dancers, 80's Rock Stars and 90's Festival Goers	65 - 72
ONCE UPON A TIME... Pirates, Princesses, Fairies and other Fantasy Storybook Characters	73 - 80
ANIMAL INSTINCTS Gentle, Wild and Fierce	81 - 84
WHAT A CHARACTER Various Pop Culture Characters	85 - 95
EXTRA-CURRICULAR ACTIVITIES Sports and Schoolgirls	96 - 98
24/7 ON CALL Police, Military, Nurses, Maids and Pilots	99 - 106
SEASONAL SWEETIES Christmas, Saint Patrick's Day, and Patriotic	107 - 110
PLUS COSTUMES Dreamgirl Favorites for Curvy "Costumers"	111 - 122
ACCESSORIES Costume Starter Dresses, Bodysuits, Headpieces, Tops, Skirts, Pants and more!	123 - 149
DREAM DEALS	150



Style 11929



Dreamgirl[®]

The images and graphics in this catalogue
[or CD] are the copyright-protected work of DG Brands
International. Any use or reproduction without the express
written consent of DG Brands is strictly prohibited.
Violators will be prosecuted to the fullest extent of the law.
COPYRIGHT © MMXX