

# Dreamgirl®



2021 COSTUME COLLECTION

取扱店 **ハッピーコスチューム**  
by Cat Fish Club

<http://www.happycostume.com>

[sales@happycostume.com](mailto:sales@happycostume.com)

TEL 0798-31-7830

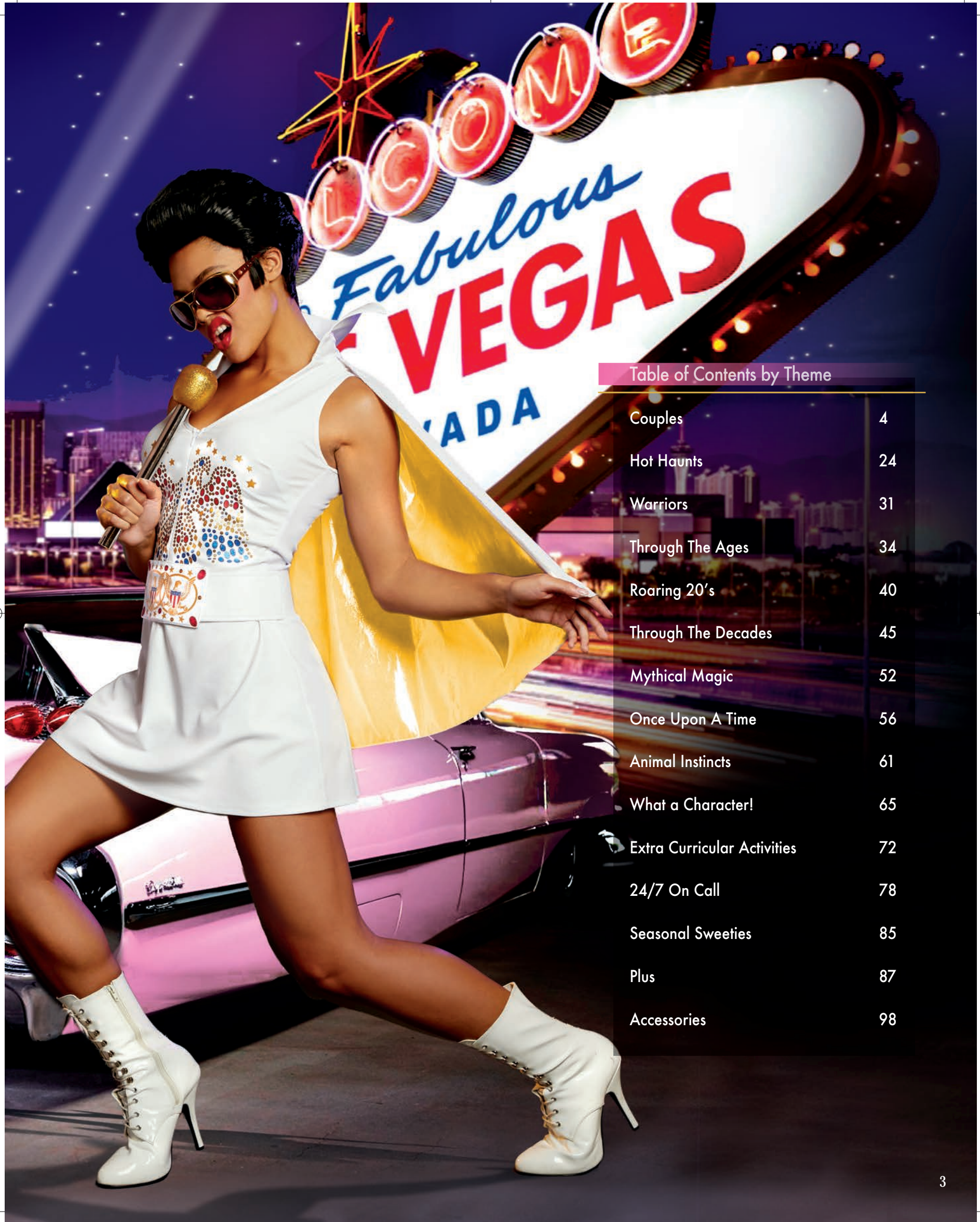


*Dreamgirl*® Couples



Styles 11996, 11999, 12308 and 12309





## Table of Contents by Theme

Couples	4
Hot Haunts	24
Warriors	31
Through The Ages	34
Roaring 20's	40
Through The Decades	45
Mythical Magic	52
Once Upon A Time	56
Animal Instincts	61
What a Character!	65
Extra Curricular Activities	72
24/7 On Call	78
Seasonal Sweeties	85
Plus	87
Accessories	98



New



Style 11996

"Love Me Tender"

S, M, L, XL

Iconic 60's styled faux two piece fringe dress with mesh midriff inset. Includes 3 white bangle bracelets.  
(Two-Piece Set)

(Shown With)  
Style 12309 "Rock Queen Wig"

New



A leather look dress version of this iconic rock & roller, has a stand-up collar and foil and glitter prints on the front dress and belt. Includes a detachable cape with vivid gold foil lining.  
(Sunglasses and microphone not included)  
(Three-Piece Set)

(Shown With)  
Style 12308 "Rock King Wig"

Style 11999

"Queen of Rock"

S, M, L, XL



New

New



**Style 12002**

"Tiger-Luscious"

M, L, XL, XXL

Wild foil tiger printed button-down polyester shirt.  
Includes tiger tooth necklace.  
(Glasses not included)  
(Two-Piece Set)

(Shown With)  
Style 12302 "Unisex Mullet Wig"

A wild foil tiger printed dress has an elastic belt with a tiger patch.  
Also includes reflective lens sunglasses.  
(Three-Piece Set)

(Shown With)  
Style 12302 "Unisex Mullet Wig"  
Style 7034 "Black Fishnets"

**Style 12020**

"Tiger Babe"

S, M, L, XL





New

#### Style 11130

"The Lion Tamer"

S, M, L, XL

Rich red velvet top with gold fringed epaulets, lion head buttons and gold sequin trimmed peplum. Includes stretch leggings, top hat and belt with lion head buckle. (Gloves, whip and jewelry not included)  
(Four-Piece Set)

This dark ringmaster costume includes a sleeveless shiny coat tail with printed lapels, an adjustable vest with attached dickie, bow tie and removable pocket chain. Also includes a collapsible velvet top hat with satin band. (Cane not included)  
(Four-Piece Set)

#### Style 12010

"The Ringmaster"

M, L, XL, XXL

(Shown With)  
Style 12070 "Loose Beach Wave Bob w/ Dark Roots"





## Style 11130

"The Lion Tamer"

S, M, L, XL

Rich red velvet top with gold fringed epaulets, lion head buttons and gold sequin trimmed peplum. Includes stretch leggings, top hat and belt with lion head buckle. (Gloves, whip and jewelry not included) (Four-Piece Set)

## Style 11131

"King of The Jungle"

M, L, XL, XXL

Gold stretch velour sleeveless lion top with attached tail and faux-fur hood with ears. Includes matching fingerless gloves. (Pants not included) (Two-Piece Set)



## Style 10624

"Dalmatian Darling"

S, M, L, XL

Dalmatian-print, stretch, velvet dress with hood, faux-fur trim and tail. Includes matching boot covers and dog-collar choker. (Three-Piece Set)

## Style 10671

"Dalmatian Diva"

S, M, L, XL  
1X, 2X, 3X



Dalmatian-print midi dress with front zipper, faux-fur collar and ribbon-tie back slit. Includes shiny vinyl belt and bone accessory. (Wig, jewelry and cigarette holder not included) (Three-Piece Set)

(Shown With)  
Style 10675 "Dalmatian Diva Wig"



New



Style 12283

"Queen Cleopatra"

S, M, L, XL  
1X, 2X, 3X



This captivating Cleopatra costume includes a velvet top and shimmering gold skirted dress with slits, inset striped waistband and dramatically long, cold-shoulder chiffon sleeves. The faux leather collar and belt front panel are glitter printed with jewels and trim accents. (scepter and headpiece not included)  
(Two-Piece Set)

(Shown With)  
Style 10832 "Egyptian Queen Wig"  
Style 11656 "Cleopatra Headpiece"

New



Style 12012

"Julius Caesar"

M, L, XL, XXL

This versatile costume can be worn with or without the included sleeveless shirt. Also includes a richly embellished foil-printed collar with attached satin cape and foil printed skirt, gauntlets and gold leaf headpiece. (sword not included)  
(Five-Piece Set)







## Style 11925

"Apollo"

M, L, XL, XXL

This versatile costume can be worn with or without the included shirt. Richly embellished Greek styled skirt with Lyre print, gold satin cape with large ruby stone embellishment, wrist gauntlets, and gold leaf headpiece are also included.  
(Gold Lyre not included)  
(Five Piece Set)

## Style 11926

"Venus"

S, M, L, XL

This elegant mythical goddess dress has a sheer over skirt, cascading chiffon sashes, and is embellished with gold trim. Also included are a gold leaf head piece and armbands.  
(Three-Piece Set)



## Style 11565

"Queen Cleo"

XS, S, M, L, XL

This exquisite costume includes an Egyptian print bodysuit with snap-crotch and chiffon skirt with Egyptian Ankh symbol. Also includes a rhinestone embellished headpiece with cobra.  
(Wig not included)  
(Three-Piece Set)

(Shown With)  
Style 10832 "Egyptian Queen Wig"

## Style 9893

"King of Egypt"

M, L, XL, XXL

This versatile costume can be worn with or without the included shirt. Egyptian collar with attached gold cape, wrist gauntlets, Royal Nemes headpiece, Eye of Horus Necklace and Egyptian Shendyt skirt with embellished waistband.  
(Six-Piece Set)





New



**Style 11998**

"Vava Voom!"

S, M, L, XL

Gorgeous rich burgundy velvet dress has an exquisite embroidered and sequined front panel lined in nude mesh. A built-up shoulder strap and plunging V neckline is so flattering, as is the flirty long burgundy sequin fringe at the hem. Also includes a sequin headpiece with a burgundy ostrich feather.  
(Boa and cigarette holder not included)  
(Two-Piece Set)

(Shown With)  
Style 12300 "Flapper Wig"

Handsomely tailored tailcoat with contrast shiny lapels and pocket with attached handkerchief. Includes satin jacquard 1920's swoop vest with attached shirtfront, bow tie and collar.

(Top hat, cane and pants not included)  
(Two-Piece Set)

**Style 11921**

"Gatsby"

M, L, XL, XXL





## Style 8190

Gangsta"  
(Men's)

M, L, XL, XXL

Black and white pinstriped, double-breasted gangster suit. Includes a dickie, machine gun screen-printed necktie, carnation pin and hat. (Shirt not included)  
(Six-Piece Set)

## Style 11938

"Roxy's Revenge"

S, M, L, XL  
1X, 2X, 3X



Stunning dress with ombré sequin design and shimmering neckline piece. Includes sequin headband with ostrich feather. (Boa, gloves and cigarette holder not included)  
(Two-Piece Set)

(Shown With)  
Style 5218 "Luna Glove"  
O/S

(Pair With)  
Style 11977 "Flapper Headpiece"



## Style 11922

"Bada-Boom"

M, L, XL, XXL

Form-fitting black and white pinstripe vest with attached sleeves and handkerchief, dickey with tie, and carnation pin. Costume also includes pants and Gangster hat. (Cigar not included)  
(Five-Piece Set)

## Style 11949

"Bada-Bing"

S, M, L, XL

Adorable pinstripe gangster romper with attached tie. Also includes hat, carnation pin, cuffs, and belt with machine gun screen print and attached chains. (Cigar not included)  
(Five-Piece Set)



## Style 9468

"Disco Dude"

M, L, XL, XXL

Black polyester button front shirt with metallic holographic disco dot.  
(Pants, sunglasses, belt, wig, and chain not included)  
(One-Piece Set)

(Shown With)  
Style 9605 "Men's Disco Pant"  
"M,L,XL,XXL"

Style11306 "Unisex Disco Wig"

## Style 9469

"Disco Doll"

S, M, L, XL

Black stretch knit jumpsuit with metallic holographic disco dot. Includes stretch sequin belt.  
(Two-Piece Set)



## Style 11556

"70's Icon"  
(Men's)

M, L, XL, XXL

Fabulous iconic gold holographic print jumpsuit with cascading sleeves and rhinestone belt detailing. (Microphone not included)  
(One-Piece Set)

(Shown With)  
Style 9605 "Men's Disco Pant"

M, L, XL, XXL

## Style 11555

"70's Icon"  
(Women's)

S, M, L, XL

Fabulous iconic gold holographic print jumpsuit with cascading sleeves and rhinestone belt detailing. (Microphone not included)  
(One-Piece Set)







## Style 11171

"Hippie Hottie"

S, M, L, XL  
1X, 2X, 3X



Groovy starburst tie-dye dress and faux-suede fringe vest with removable "Flower Power" and "Peace" pins. Includes head tie, sunglasses, arm tie and peace sign necklace. (Bracelet not included)  
(Eight-Piece Set)

## Style 11172

"Hippie Dude"

M, L, XL, XXL

Woodstock-inspired faux-suede fringed top with lace up detailing. Includes tie-dye head band and "Make Love Not War" and "Peace" pins. (Sunglasses not included)  
(Four-Piece Set)



## Style 11122

"Hair Band"  
(Men's)

M, L, XL, XXL

Heavy metal inspired look with ripped shirt with fishnet sleeves and animal-printed pants. Includes metal studded belt, head band and two animal-printed belt ties. (Guitar not included)  
(Five-Piece Set)

(Shown With)  
Style 11141 "Unisex Rocker Wig"

## Style 11123

"Hair Band"  
(Women's)

S, M, L, XL

Heavy metal inspired look with animal-printed pants and ripped rocker top with "Heavy Metal" screen print and fishnet sleeves. Includes metal stud belt, head wrap, and two animal-printed belt ties. (Bracelets and guitar not included)  
(Five-Piece Set)

(Shown With)  
Style 11141 "Unisex Rocker Wig"



New



Style 12271

"Vampira"

S, M, L, XL  
1X, 2X, 3X



Gorgeous black velvet gown has a lace accented stand up collar, sleeves and godets filled with delicate lace that matches the flowing lace sleeve detail; with red sequin piping. Center front applique has faux leather and sequin accents. Also includes gothic cross necklace.  
(Two-Piece Set)

Black velvet coat with embossed scroll design and an attached vampire collar. Includes printed satin vest with attached shirt front and ruffled collar.  
(Pants and gloves not included)  
(Two-Piece Set)

Style 10260

"Bloody Handsome"

M, L, XL, XXL





### Style 11939

"Prince of Darkness"

M, L, XL, XXL

Rich velvet tunic with large pentagram patch and attached cape. Also includes belt with chains and pentagram charms.  
(Gloves, pants, and scepter not included)  
(Two-Piece Set)

### Style 11940

"Princess of Darkness"

S, M, L, XL

Sleek zip front jumpsuit with vampire collar and attached skirt.  
(One-Piece Set)



### Style 10639

"Frightfully Beautiful"

S, M, L, XL  
1X, 2X, 3X



Spooky, luxe black velvet gown with sequin applique bodice, lace paneling in skirt and lace waterfall sleeves.  
(Rose and jewelry not included)  
(One-Piece Set)

### Style 10640

"Mr. Fright"

M, L, XL, XXL

Kooky double-breasted suit jacket with pinstripe print and rose boutonniere with attached spider. Includes matching pants and casket-print tie.  
(Cigar not included)  
(Three-Piece Set)

### Style 10641

"Friday"

S, M, L, XL

Creepy black velvet dress with white contrast collar and gothic cross screen prints and buttons.  
(Doll and thigh highs not included) (Two-Piece Set)

(Shown With)

Style 7031 "Sheer Thigh Highs With Back Seam"  
O/S

Style 10814 "Double Braid Wig"



## Style 11930

"Ninja"  
(Women's)

S, M, L, XL

This sleek Ninja costume includes a dress with faux leather sleeves, a sarong with a dragon screen print, fingerless gloves, half face mask, garter, Sai dagger, and leg ties. (Seven-Piece Set)

## Style 11931

"Ninja"  
(Men's)

M, L, XL, XXL

This versatile Ninja costume can be worn with or without the dragon screen-printed hooded shirt.

Includes pants, facemask, fingerless gloves and faux leather Obi belt.

(Sword not included)  
(Five-Piece Set)







## Style 11585

"Samurai"  
(Men's)

M, L, XL, XXL

Prepare for battle in this fierce tunic, matching belt with Samurai patch, head piece and wrist gauntlets.  
(Pants and sword not included)  
(Four-Piece Set)

## Style 11584

"Samurai"  
(Women's)  
S, M, L, XL

Dress to kill in this sleek black jumpsuit with lace up neckline detail and Samurai belt with attached skirt. Also includes headpiece and wrist gauntlets.  
(Sword not included)  
(Four-Piece Set)



## Style 11962

"Warrior Queen"  
S, M, L, XL

This glorious dress combines unique quilted diamond patterned faux leather with rich velvet.  
The included velvet cape has an oversized fur collar and faux leather straps which attach with Velcro to the cape. Also included is a medieval belt with a Velcro back closure.  
(Gloves and Sword not included)  
(Three-Piece Set)

## Style 11593

"King of Thrones"  
M, L, XL, XXL

Be ready to slay a dragon in this gallant costume which includes a faux leather tunic top and full velvet cape with oversized fur collar. Also includes a medieval styled belt with velcro back closure.  
(Gloves, sword and pants not included)  
(Three-Piece Set)



## Style 9477

"Little Red"

S, M, L, XL  
1X/2X, 3X/4X



Beautifully-detailed fairytale dress with underwire foam cups with pleated ruffles, embroidered heart trim, attached petticoat and lace-trimmed apron. Includes full-length hooded satin cape. (Basket, thigh highs, stocking bows additional and satin gloves not included)  
(Two-Piece Set)

(Shown With)  
Style 5218 "Luna Glove"  
O/S  
Style 10342 "Bow Top Stockings"  
O/S

## Style 11182

"Big Bad Wolf"  
(Women's)

XS, S, M, L, XL

Playful red plaid jumper dress with large front pocket and faux-fur trim. Includes shaggy faux-fur hood with wolf ears, matching fingerless gloves, and belt with attached furry tail.  
(Four-Piece Set)



## Style 9493

"Big Bad Wolf"  
(Men's)

M, L, XL, XXL

Men's red and black check jagged-edge tunic with faux fur hood with wolf ears. Includes fingerless gloves.  
(Pants not included)  
(Two-Piece Set)

## Style 9477

"Little Red"

S, M, L, XL  
1X/2X, 3X/4X



Beautifully-detailed fairytale dress with underwire foam cups with pleated ruffles, embroidered heart trim, lace-trimmed apron and attached petticoat. Includes full-length hooded satin cape. (Basket, thigh highs, stocking bows and satin gloves not included)  
(Two-Piece Set)

(Shown With)  
Style 10342 "Bow Top Stockings"  
O/S, O/S Queen

Style 5218 "Luna Gloves"  
O/S







## Style 10297

"Hatter Madness"  
(Men's)

M, L, XL, XXL

Brown velvet jacket with uneven pockets and purple trim. Includes diamond-print vest with polka dot buttons and attached purple dickey with large bow tie, and oversized velvet hat.  
(Wig and pants not included)  
(Three-Piece Set)

## Style 11162

"Raving Mad"  
(Women's)

S, M, L, XL

Quirky, corset-styled dress with printed-satin layered high-low skirt. Includes stretch velvet shrug with printed bow tie, diamond printed stocking topper bow pins and over-sized velvet top hat with card and peacock feather.  
(Gloves, petticoat, and thigh highs not included)  
(Four-Piece Set)

(Shown With)  
Style 5218 "Luna Glove"  
O/S



## Style 11627

"Mischief in Neverland"

XS, S, M, L, XL

Playful rich green velvet jagged edge dress with lace up neckline and button front skirt, opens to reveal included shorts. Costume also includes a hat with feather and belt.  
(Sword not included)  
(Four-Piece Set)

## Style 9452

"Fairy-licious"

S, M, L, XL

Holographic-print stretch knit dress with corset-styled bodice, green rhinestone encrusted neckline appliqué and attached sparkly tutu bottom. Includes wand and fairy wings.  
(Earrings not included)  
(Three-Piece Set)



*New*



**Style 12013**

"Say Cheesel"

S, M, L, XL

This adorable mouse costume is so fuzzy and warm! Includes a sherpa hooded dress and furry inset heart bodice detail, fingerless gloves and boot covers. Also includes a satin cheese printed bow tie and removable tail.  
(Five-Piece Set)

*New*



This adorable cat costume is so fuzzy and warm! Includes a sherpa hooded dress with paw print appliqué back detail, front zipper, pom poms and boot covers. Also includes a sherpa bell choker and removable tail.  
(Four-Piece Set)

(Shown With)  
Style 12314 Faux Ombre Layered Wig

**Style 12014**

"Black Cat"

S, M, L, XL  
1X, 2X, 3X







*New*

**Style 10655**

"Start Your Engines"  
(Women's)

S, M, L, XL

Sleek zipper-front jumpsuit with checkered sides, "racing" and flame screen-print details and authentic-looking race patches. Includes matching black belt.  
(Flag not included)  
(Two-Piece Set)

Color blocked poly poplin coveralls with elasticized back waist for fit, have contrast piping, printed patches and a front zipper.  
Includes coordinating baseball style cap.  
(Two-Piece Set)

**Style 12011**

"Start Your Engines"  
(Men's)

M, L, XL, XXL





### Style 10315

"World Champion"  
(Women's)

S, M, L, XL

Black satin boxing robe with belt. Includes lace-up top, boxing gloves and skirt with loop to hold gloves, athletic striping and screen prints. (Five-Piece Set)

### Style 10322

"World Champion"  
(Men's)

M, L, XL, XXL

Black and gold satin robe with tie belt and gold metallic "World Champion" screen print. Includes boxing gloves, shorts, and "World Champion" belt. (Five-Piece Set)



### Style 5236

"Mile High Pilot Hugh  
Jorgan"

M, L, XL, XXL

Button-front jacket with satin and gold trim details. Includes pilot hat, collar with necktie and removable "Mile High Pilot Hugh Jorgan" name badge. (Pants not included) (Four-piece set)

### Style 10685

"Flight Captain"

S, M, L, XL  
1X, 2X, 3X



Midi-length, stretch-knit dress with gold detailing. Includes pilot hat, "Mile High Captain" pin and belt. (Four-Piece Set)







### Style 11951

"Special Ops"  
(Women's)

S, M, L, XL

Sleek jumpsuit with zipper front closure and special operations patches. Also includes an armband with a knife, arm tie, leg tie with badge, tactical belt with bullets, handcuffs, knife, and bullet bracelets.  
(Sunglasses and gloves not included)  
(Ten-Piece Set)

### Style 11952

"Special Ops"  
(Men's)

M, L, XL, XXL

Rugged tactical vest with bullet strips and special operations patches. Includes S.W.A.T. Cap, bullet strips, knife, half-faced mask and handcuffs.  
(Gloves, pants and sunglasses not included)  
(Six-Piece Set)



### Style 8817

"Dirty Cop Officer  
Ed Banger"

M, L, XL, XXL

Black sleeveless collared shirt with front pockets, police patch and removable neck tie. Includes police hat with badge pin, "Officer Ed Banger" nameplate, removable police badge and arm band.  
(Sunglasses, handcuffs, baton and pants not included)  
(Six-Piece Set)

### Style 8816

"Dirty Cop Officer  
Anita Bribe"

S, M, L, XL

Black bengaline stretch knit dress with belt and police patches on shoulders. Costume includes police hat with badge pin, "Officer Anita Bribe" nameplate and removable police badge.  
(Handcuffs not included)  
(Five-Piece Set)



# *Dreamgirl*® Hot Haunts



Style 12271 and 12318






*New*

Style 12271

"Vampira"

S, M, L, XL  
1X, 2X, 3X 

Gorgeous black velvet gown has a lace accented stand up collar, sleeves and godets filled with delicate lace that matches the flowing lace sleeve detail; with red sequin piping. Center front applique has faux leather and sequin accents. Also includes gothic cross necklace. (Two-Piece Set)





## Style 12018

"Boo-Tiful Witch"

S, M, L, XL  
1X, 2X, 3X



Bewitching corset-style velvet lace-up bodice dress with spiderweb printed light weight tulle tiered handkerchief skirt is lined in a contrasting vibrant purple. Coated belt with glitter buckle, choker and curved witch hat with purple contrast lining and hat band, and a dangling spider complete her look! (broom not included)  
(Four-Piece Set)

(Shown With)  
Style 7819 "Dominique Gloves"  
Style 11352 "Long Wavy Layered" Ombre Wig

New





*New*

Style 12282

"Miss Enchantment"

S, M, L, XL  
1X, 2X, 3X



This enchanting witch costume includes a black shredded knit dress lined in lime green. It has attached sleeves and a gauze cape. Also includes the belt with an oversized buckle and witch hat. (Three-Piece Set)

(Shown with)  
Style 11679 "Extra Long  
Straight Wig" Black





## Style 11179

"Bare Bones Babe"

XS, S, M, L, XL

Creepy-licious skeleton-print top with full length attached sheer open-front skirt. Includes skeleton printed leggings, fingerless gloves, and black rose headpiece with skull. (Jewelry not included) (Four-Piece Set)



## Style 10680

"Lady of the Dead"

S, M, L, XL  
1X, 2X, 3X

Flirty sugar skull dress with ruffled neckline, brightly-colored skeleton screen print, satin ribbon belt and multi-tiered skirt with sugar skull detailing. Includes beaded cross necklace. (Headpiece, stockings and gloves not included) (Two-Piece Set)

(Shown With)  
Style 10003 "Day of The Dead Headpiece"

Style 5218 "Luna Glove"



## Style 10260

"Bloody Handsome"

M, L, XL, XXL

Black velvet coat with embossed scroll design and an attached vampire collar. Includes printed satin vest with attached shirt front and ruffled collar. (Pants and gloves not included) (Two-Piece Set)



## Style 10663

"Wicked, Wicked Witch"

S, M, L, XL

Sexy stretch-knit dress with cutout sequin pentagram appliqué on bodice. Includes removable, high-low, sparkly tulle skirt, mesh fingerless gauntlet gloves and tall witch's hat. (Broom and fishnet stockings not included) (Four-Piece Set)





## Style 11939

"Prince of Darkness"  
M, L, XL, XXL

Rich velvet tunic with large pentagram patch and attached cape.  
Also includes belt with chains and pentagram charms.  
(Gloves, pants, and scepter not included)  
(Two-Piece Set)



## Style 11940

"Princess of Darkness"  
S, M, L, XL

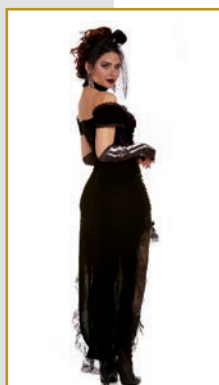
Sleek zip front jumpsuit with vampire collar and attached skirt.  
(One-Piece Set)



## Style 11934

"Madame Skeleton"  
S, M, L, XL

This captivating skeleton costume includes an off-the-shoulder dress with skeleton screen printed chest and high-low hemline. Also included are skeleton printed fingerless gloves, leggings and a mini hat with veil headband.  
(Four-Piece Set)



## Style 11923

"Mummy Dearest"  
S, M, L, XL

Tattered Egyptian mummy bodysuit with elongated, jagged edge sleeves and snap crotch closure. Also included are an Egyptian collar, leg warmers, and a rhinestone-embellished skirt with Ankh symbol.  
(Scepter and headpiece not included)  
(Four-Piece Set)



(Shown With)  
Style 11656  
"Cleopatra Headpiece"  
O/S





## Style 10641

"Friday"

S, M, L, XL

Creepy black velvet dress with white contrast collar and gothic cross screen prints and buttons. (Doll and thigh highs not included)  
(Two-Piece Set)

(Shown With)  
Style 7031  
"Sheer Thigh Highs With Back Seam"  
O/S

Style 10814  
"Double Braid Wig"



## Style 10640

"Mr. Fright"

M, L, XL, XXL

Kooky double-breasted suit jacket with pinstripe print and rose boutonniere with attached spider. Includes matching pants and casket-print tie. (Cigar not included)  
(Three-Piece Set)



Style 10639 Spooky, luxe black velvet gown with sequin appliqué bodice, lace paneling in skirt and lace waterfall sleeves. (Rose and jewelry not included)  
"Frightfully Beautiful" (One-Piece Set)

S, M, L, XL  
1X, 2X, 3X





# *Dreamgirl* Warriors

Style 11962





Style 11931

"Ninja"  
(Men's)

M, L, XL, XXL

This versatile Ninja costume can be worn with or without the dragon screen-printed hooded shirt. Includes pants, facemask, fingerless gloves and faux leather Obi belt. (Sword not included)  
(Five-Piece Set)



Style 11930

"Ninja"  
(Women's)

S, M, L, XL

This sleek Ninja costume includes a dress with faux leather sleeves, a sarong with a dragon screen print, fingerless gloves, half face mask, garter, Sai dagger, and leg ties.  
(Seven-Piece Set)



## Style 11593

"King of Thrones"

M, L, XL, XXL

Be ready to slay a dragon in this gallant costume, which includes a faux leather tunic top and full velvet cape with oversized fur collar. Also includes a medieval styled belt with velcro back closure. (Gloves, sword and pants not included)  
(Three-Piece Set)



## Style 11962

"Warrior Queen"

S, M, L, XL

This glorious dress combines a unique quilted diamond patterned faux leather, with a rich velvet. The included velvet cape has an oversized fur collar and faux leather straps which attach with Velcro to the cape. Also included is a medieval belt with a Velcro back closure. (Gloves and sword not included)  
(Three-Piece Set)



## Style 11585

"Samurai"  
(Men's)

M, L, XL, XXL

Prepare for battle in this fierce tunic, matching belt with Samurai patch, head piece and wrist gauntlets. (Pants and sword not included)  
(Four-Piece Set)



## Style 11584

"Samurai"  
(Women's)

S, M, L, XL

Dress to kill in this sleek black jumpsuit with lace up neckline detail and Samurai belt with attached skirt. Also includes headpiece and wrist gauntlets. (Sword not included)  
(Four-Piece Set)

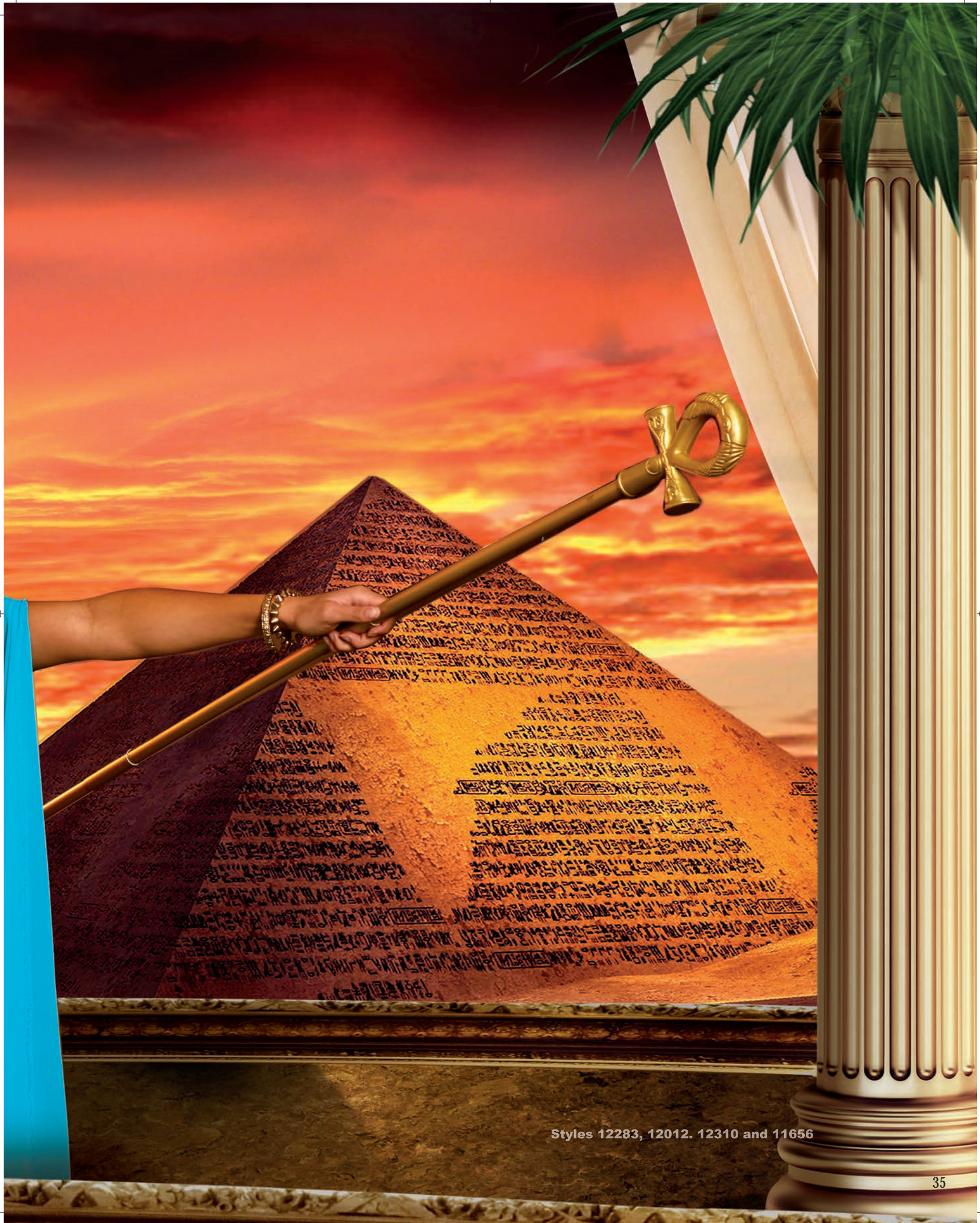




# *Dreamgirl* Through The Ages







Styles 12283, 12012, 12310 and 11656



New



Style 12283

"Queen Cleopatra"

S, M, L, XL  
1X, 2X, 3X



This captivating Cleopatra costume includes a velvet top and shimmering gold skirted dress with slits, inset striped waistband and dramatically long, cold-shoulder chiffon sleeves. The faux leather collar and belt front panel are glitter printed with jewels and trim accents. (scepter and headpiece not included)  
(Two-Piece Set)

(Shown With)  
Style 10832 "Egyptian Queen Wig"  
Style 11656 "Cleopatra Headpiece"  
O/S

New



This versatile costume can be worn with or without the included sleeveless shirt. Also includes a richly embellished foil-printed collar with attached satin cape and foil printed skirt, gauntlets and gold leaf headpiece. (sword not included)  
(Five-Piece set)



Style 12012

"Julius Caesar"

M, L, XL, XXL





**Style 9893**  
"King of Egypt"  
M, L, XL, XXL

This versatile costume can be worn with or without the included shirt. Includes Egyptian collar with attached gold cape, wrist gauntlets, Royal Nemes headpiece, Eye of Horus necklace and Egyptian Shendyt skirt with embellished waistband.  
(Six-Piece Set)



**Style 11565**  
"Queen Cleo"  
XS, S, M, L, XL

This exquisite costume includes an Egyptian print bodysuit with snap-crotch and chiffon skirt with Egyptian Ankh symbol. Also includes a rhinestone embellished headpiece with cobra.  
(Scepter and wig not included)  
(Three-Piece Set)

(Shown With)  
Style 10832 "Egyptian Queen Wig"



## Style 10654

"Ramses"

M, L, XL, XXL

Metallic gold shirt, Egyptian collar with attached gold cape, wrist gauntlets, Royal Nemes headpiece and Egyptian Shendyt skirt with embellished waistband. This versatile costume can be worn with or without the included shirt. (Sword not included) (Five-Piece Set)



## Style 11159

"Caesar"

M, L, XL, XXL

Regal long tunic and draped red satin toga with gold leaf printed design and trim. Includes wrist gauntlets and gold leaf head piece. (Four-Piece Set)



## Style 10290

"Exquisite Cleopatra"

S, M, L, XL  
1X/2X, 3X/4X



Exquisite velvet gown with Egyptian pattern, front slits and gold-trimmed detailing. Includes Egyptian collar and belt. (Jewelry and headpiece not included) (Three-Piece Set)



## Style 11134

"Saloon Gal"  
S, M, L, XL  
1X, 2X, 3X



Ultra-flattering,  
western-styled  
off-the-shoulder  
dress with attached skirt  
and distressed  
leather-look lace-up waist  
corset. (Choker and  
petticoat not included)  
(Two-Piece Set)



## Style 11139

"Clubbin' Cutie"

S, M, L, XL

Pre-historic chic,  
animal-printed dress  
with faux-fur trim, jagged  
edge hem and removable  
distressed faux-leather belt  
with skeleton bones trim.  
Includes bone barrette, fur  
boot toppers, necklace,  
and arm wrap.  
(Inflatable club not  
included)  
(Six-Piece Set))

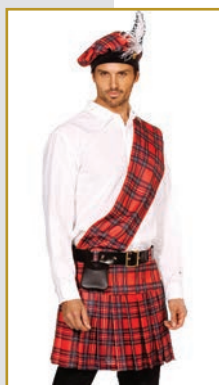


## Style 5084

"Hot Scottie"

M, L, XL, XXL

Plaid pleated kilt with  
attached sash.  
Includes matching hat,  
belt with bag and two  
sock garters with  
matching plaid ties.  
(Socks and  
shirt not included)  
(Five-Piece Set)



## Style 10669

"Gypsy"

S, M, L, XL  
1X, 2X, 3X



Peasant-style dress with  
velvet lace-up bodice, gold  
trim, multi-tiered  
handkerchief skirt with  
paisley print and gold  
coin detailing. Includes  
matching head wrap with  
gold coin trim.  
(Jewelry not included)  
(Two-Piece Set)





# *Dreamgirl*® Roaring 20's

Style 11998, 5218, 11921 and 12300







*New*

Style 11998

"Va Va Voom"

S, M, L, XL

Gorgeous rich burgundy velvet dress has an exquisite embroidered and sequined front panel lined in nude mesh. A built-up shoulder strap and plunging V neckline is so flattering, as is the flirty long burgundy sequin fringe at the hem. Also includes a sequin headpiece with a burgundy ostrich feather.  
(Boa and cigarette holder not included)  
(Two-Piece set)

(Shown With)  
Style 12300 "Flapper Wig"  
Style 5218 "Luna Glove"  
O/S





## Style 11921

"Gatsby"

M, L, XL, XXL

Handsomely tailored tailcoat with contrast shiny lapels and pocket with attached handkerchief. Includes satin jacquard 1920's swoop vest with attached shirtfront, bow tie and collar.  
(Top hat, cane, and pants not included)  
(Two-Piece Set)



## Style 11938

"Roxy's Revenge"

S, M, L, XL  
1X, 2X, 3X



Stunning dress with ombré sequin design and shimmering neckline piece. Includes sequin headband with ostrich feather. (Boa, gloves and cigarette holder not included)  
(Two-Piece Set)



(Shown With)  
Style 5218  
"Luna Glove"  
O/S  
(Pair With)  
Style 11977  
"Flapper Headpiece"



## Style 11545

"Miss Ritz"

S, M, L, XL  
1X, 2X, 3X



Exquisite rich purple flapper dress with off-the-shoulder fringe sleeves and back zipper. Includes sequin headpiece with ostrich feather. (Gloves, wig, cigarette holder, and jewelry not included)  
(Two-Piece Set)

(Shown With)  
Style 5218 "Luna Glove"  
O/S





Striped three-button jacket. Includes hat and bow tie.  
(Shirt and pants not included)  
(Three-Piece Set)

Style 9838

"Good Time Charlie"

M, L, XL, XXL



Style 10700

"Swanky Flapper"

S, M, L, XL  
1X, 2X, 3X



1920's-inspired dress with off-the-shoulder fringe detail and gold intricately-embroidered neckline & hemline trim. Includes gold sequined headpiece with ostrich feather.  
(Boa, wig, gloves, cigarette holder and jewelry not included)  
(Two-Piece Set)



Style 10210

"Downton Doll"

S, M, L, XL  
1X, 2X, 3X



Have a rip-roaring time in this 1920's inspired beautiful flapper costume! You'll dazzle them all, coming and going, in this deco-design printed velvet dress with embellished neckline. Sequin fringe hemline and matching headpiece with ostrich feather completes this fabulous look. Exquisite midnight blue embossed stretch velvet dress with jeweled neckline and sequin fringe trim. Includes jeweled headpiece with ostrich feather.  
(Boa, gloves, cigarette holder and jewelry not included)  
(Two-Piece Set)

(Shown With)  
Style 5218  
"Luna Glove"  
O/S



## Style 11922

"Bada-Boom"

M, L, XL, XXL

Form-fitting black and white pinstripe vest with attached sleeves and handkerchief, dickey with tie, and carnation pin. Costume also includes pants and Gangster hat. (Cigar not included) (Five-Piece Set)



## Style 11949

"Bada-Bing"

S, M, L, XL

Adorable pinstripe gangster romper with attached tie. Also includes hat, carnation pin, cuffs, and belt with machine gun screen print and attached chains. (Cigar not included) (Five-Piece Set)



## Style 8105

"Zoot Suit Riot"

M, L, XL, XXL

Button-front, longer-length pinstriped zoot suit with matching pants with side pocket and gold chain detail. Includes adjustable/removable elastic suspenders, matching hat and necktie with "\$" sign detail. (Shirt not included) (Five-Piece Set)



## Style 8190

"Gangsta"

M, L, XL, XXL

Black and white pinstriped, double-breasted gangster suit. Includes a dickie, machine gun screen-printed necktie, carnation pin and hat. (Shirt not included) (Six-Piece Set)







Through the Decades  
*Dreamgirl*

Style 12016 and 11693



Style 12016

"80'S Party"

S, M, L, XL

*New*

Neon zebra printed off-the-shoulder dress with multi-layered ruffle skirt and adjustable removable clear shoulder straps is accessorized with coordinating leg warmers, lace fingerless gloves and headband with an oversized lace bow. (Fishnet stockings not included) (Four-Piece set)

(Shown With)  
Style 11693  
"Long Curly Wig With Dark  
Roots"







*New*

Style 12284

"Disco Fox"

S, M, L, XL

Gold lamé halter jumpsuit has disco dot sequin accented bell bottoms and long scarf. Includes a stretch gold sequin belt. (Three-Piece set)





Style 11555

"70's Icon"  
(Women's)

S, M, L, XL

Fabulous iconic gold  
holographic print jumpsuit  
with cascading sleeves  
and rhinestone belt  
detailing.  
(Microphone not included)  
(One-Piece Set)



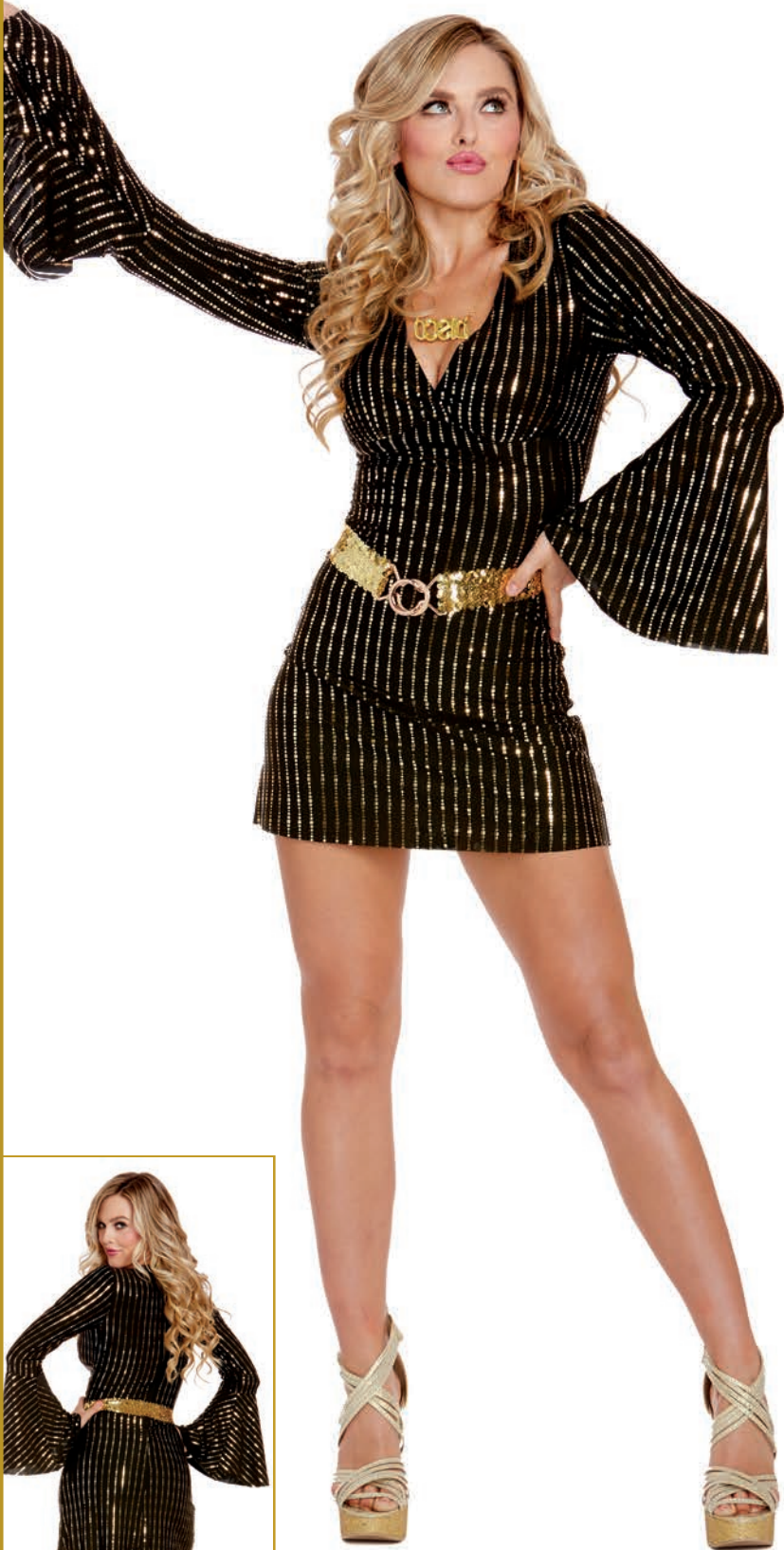
Style 11556

"70's Icon"  
(Men's)

M, L, XL, XXL

Groovy holographic print  
button down shirt and  
moustache.  
(Pants, belt, and wig  
not included)  
(Two-Piece Set)

(Shown With)  
Style 9605  
"Men's Disco Pant"  
M, L, XL, XXL



Style 11970

"Disco Babe"

S, M, L, XL  
1X, 2X, 3X



Glittering 1970's disco dress  
with bell sleeves, gold sequin  
belt and Disco necklace.  
(Three-Piece Set)





Black stretch knit jumpsuit with metallic holographic disco dot. Includes stretch sequin belt. (Two-Piece Set)

Style 9469

"Disco Doll"

S, M, L, XL



Style 9468

"Disco Dude"

M, L, XL, XXL

Black polyester button front shirt with metallic holographic disco dot. (Pants, sunglasses, belt, wig, and chain not included) (One-Piece Set)

(Shown With)  
Style 9605  
"Men's Disco Pant"  
M, L, XL, XXL

Style 11306  
"Unisex Disco Wig"



Style 11106

"Disco Diva"

S, M, L, XL  
1X, 2X, 3X



Foxy black knit dress with metallic holographic disco dot, sweetheart neckline and side slit. Includes stretch pink sequin belt and disco ball necklace. (Additional jewelry not included) (Three-Piece Set)



## Style 11172

"Hippie Dude"

M, L, XL, XXL

Woodstock-inspired faux-suede fringed top with lace up detailing. Includes tie-dye head band and "Make Love Not War" and "Peace" pins. (Sunglasses not included)  
(Four-Piece Set)



## Style 11171

"Hippie Hottie"

S, M, L, XL  
1X, 2X, 3X



Groovy starburst tie-dye dress and faux-suede fringe vest with removable "Flower Power" and "Peace" pins. Includes head tie, sunglasses, arm tie and peace sign necklace. (Bracelet not included)  
(Eight-Piece Set)



## Style 8158

"Go Go Gorgeous"

S, M, L, XL

Stretch-knit, A-line, go-go dancer dress with retro-pattern, bell-shaped long sleeves and unique-shaped neckline. Includes matching retro glasses, earrings, headband and faux-vinyl daisy belt.  
(Five-Piece Set)



## Style 11969

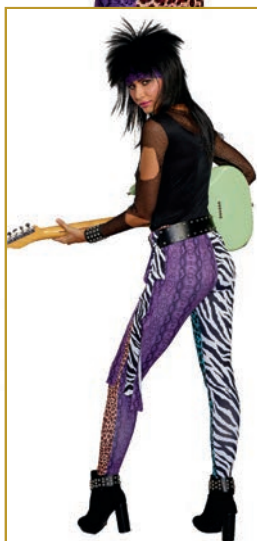
"Groovy Baby"

S, M, L, XL

Groovy halter dress with peace sign and long fringe trim. Also includes matching headband.  
(Two-Piece Set)







### Style 11123

"Hair Band"  
(Women's)

S, M, L, XL

Heavy metal inspired look with animal-printed pants and ripped rocker top with "Heavy Metal" screen print and fishnet sleeves. Includes metal stud belt, head wrap, and two animal-printed belt ties. (Bracelets and guitar not included)  
(Five-Piece Set)

(Shown With)  
Style 11141  
"Unisex Rocker Wig"



Heavy metal inspired look with ripped shirt with fishnet sleeves and animal-printed pants. Includes metal studded belt, head band and two animal-printed belt ties. (Guitar not included)  
(Five-Piece Set)

(Shown With)  
Style 11141  
"Unisex Rocker Wig"

### Style 11122

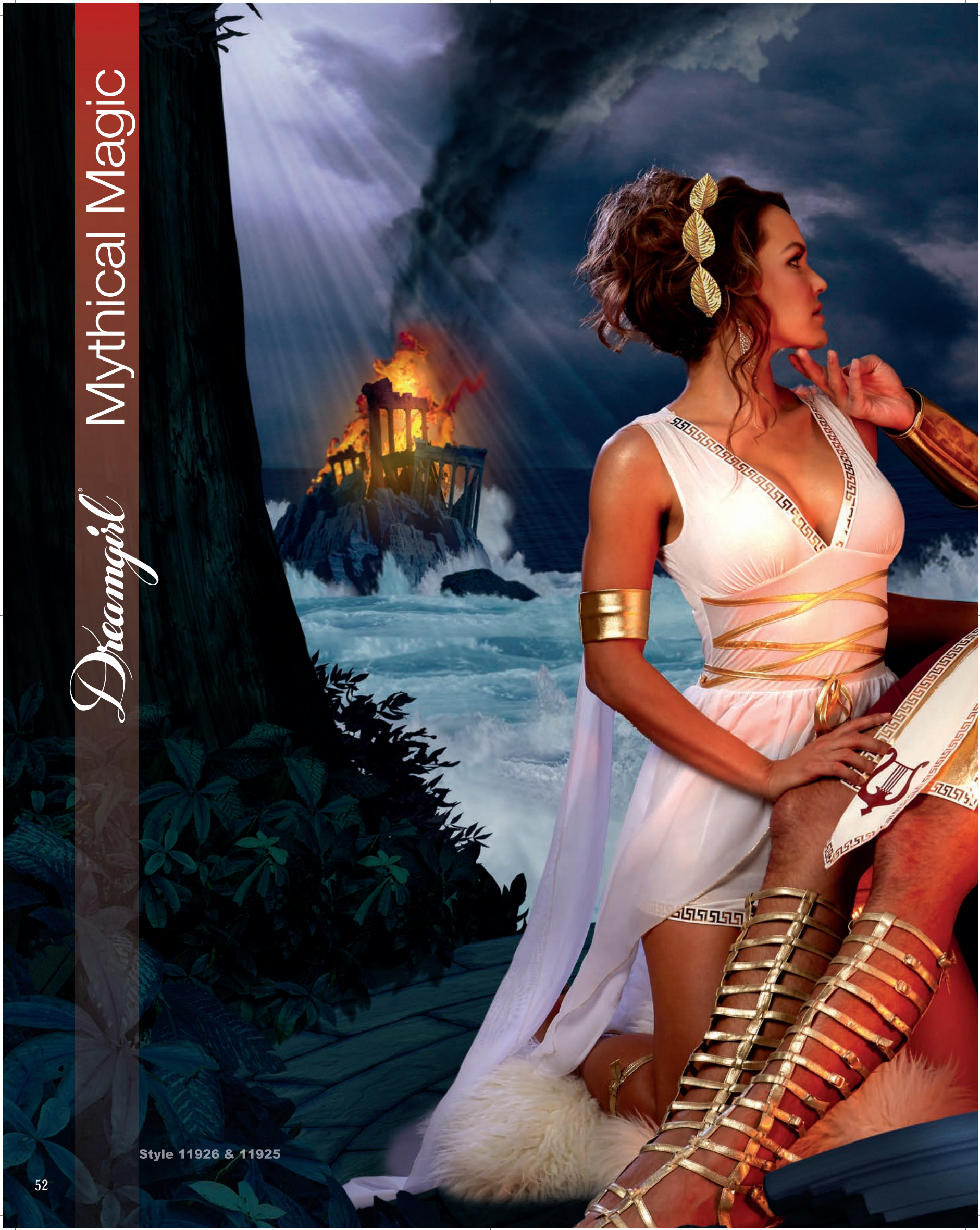
"Hair Band"  
(Men's)

M, L, XL, XXL



# *Dreamgirl* Mythical Magic

Style 11926 & 11925









## Style 11926

"Venus"

S, M, L, XL

This elegant mythical goddess dress has a sheer over skirt, cascading chiffon sashes, and is embellished with gold trim. Also included are a gold leaf head piece and armbands. (Three-Piece Set)



## Style 11925

"Apollo"

M, L, XL, XXL

This versatile costume can be worn with or without the included shirt. Richly embellished Greek styled skirt with Lyre print, gold satin cape with large ruby stone embellishment, armbands and gold leaf headpiece are also included. (Sword not included) (Five-Piece Set)



## Style 8860

"He's A God"

M, L, XL, XXL

White tunic with gold satin attached cape and matching trim. Gold leaf headpiece, removable belt and wrist gauntlets included. (Four-Piece Set)



## Style 11954

"Sun Goddess"

S, M, L, XL

Mesmerizing gold gown with gold embroidered trim epaulets, attached sheer sashes, and front slits. Also includes glittering sun goddess headpiece and belt. (Three-Piece Set)







**Style 11149**

"The Sorceress"

S, M, L, XL  
1X, 2X, 3X



Exquisite midnight blue velvet gown with attached sparkling silver mystical-print sheer cape. Includes shimmering rhinestone headpiece. (Scepter not included)  
(Two-Piece Set)



Radiant black dress with exquisite neckline appliqué, sequin trim and high-low hemline skirt with layers of glittered feather-shaped petals. Includes black feather angel wings and sequin halo headband. (Gloves, earrings and thigh highs not included)  
(Three-Piece Set)

**Style 11180**

"Angel of Darkness"

S, M, L, XL

(Shown With)  
Style 10341 "Midnight Madness Gloves"  
O/S



*Dreamgirl* Once Upon A Time

Style 11943







**Style 11963**

"Ships Ahoy"  
(Women's)

S, M, L, XL  
1X, 2X, 3X



Off-the shoulder, ultra-flattering pirate dress with multi-tiered skirt and attached faux leather vest. Head scarf also included.  
(Sword not included)  
(Two-Piece Set)

(Shown With)  
Style 10799 "Pirate Hat" (Women's)  
O/S



Gothic styled dress with large hook and eye closures and jagged hemline. Includes hooded lace cape, and wolf head choker. (Gloves, basket and fishnets not included)  
(Three-Piece Set)

(Shown With)  
Style 7819 "Dominique Glove"  
O/S  
Style 7034 "Black Fishnets"  
O/S

**Style 11943**

"Big Bad Red"

S, M, L, XL  
1X, 2X, 3X





## Style 9477

"Little Red"

S, M, L, XL  
1X/2X, 3X/4X



Beautifully-detailed fairytale dress with underwire foam cups with pleated ruffles, embroidered heart trim, lace-trimmed apron and attached petticoat. Includes full-length hooded satin cape. (Basket, thigh highs, stocking bows and satin gloves not included) (Two-Piece Set)

(Shown With)  
Style 10342  
"Bow Top Stockings"  
O/S

Style 5218  
"Luna Gloves"  
O/S



## Style 9493

"Big Bad Wolf"  
(Men's)

M, L, XL, XXL

Men's red and black check jagged-edge tunic with faux fur hood with wolf ears. Includes fingerless gloves. (Pants not included) (Two-Piece Set)



## Style 11182

"Big Bad Wolf"  
(Women's)

XS, S, M, L, XL

Playful red plaid jumper dress with large front pocket and faux-fur trim. Includes shaggy faux-fur hood with wolf ears, matching fingerless gloves, and belt with attached furry tail. (Four-Piece Set)



## Style 10297

"Hatter Madness"

M, L, XL, XXL

Brown velvet jacket with uneven pockets and purple trim. Includes diamond-print vest with polka dot buttons and attached purple dickey with large bow tie, and oversized velvet hat. (Wig and pants not included) (Three-Piece Set)



## Style 11162

"Raving Mad"

S, M, L, XL

Quirky, corset-styled dress with printed-satin layered high-low skirt. Includes stretch velvet shrug with printed bow tie, diamond printed stocking topper bow pins and over-sized velvet top hat with card and peacock feather. (Gloves, wig, petticoat, and thigh highs not included) (Four-Piece Set)



(Shown With)  
Style 5218  
"Luna Glove"  
O/S

## Style 11161

"Magic Cat"

S, M, L, XL

Whimsical bright pink and purple striped panne velvet dress with attached tail and shaggy fur hood with cat ears. Includes fingerless gloves, choker and boot covers. (Wig not included) (Three-Piece Set)



## Style 10649

"White Rabbit"

M, L, XL, XXL

Velvet jacket with pocket watch applique, black-and-white checkered cuffs and black clock-printed vest with attached faux-fur dickey and black satin bow tie. Includes matching top hat with rabbit ears and fake pocket watch with chain fob. (Pants and gloves not included) (Four-Piece Set)







Style 11627

"Mischief in Neverland"

XS, S, M, L, XL

Playful rich green velvet jagged edge dress with lace up neckline and button front skirt, opens to reveal included shorts. Costume also includes a hat with feather and belt.  
(Sword not included)  
(Four-Piece Set)



Style 9452

"Fairy-licious"

S, M, L, XL

Holographic-print stretch knit dress with corset-styled bodice, green rhinestone encrusted neckline appliqué and attached sparkly tutu bottom. Includes wand and fairy wings.  
(Earrings not included)  
(Three-Piece Set)



Style 10298

"The Sultan"

M, L, XL, XXL

Exotic purple satin tunic with attached velvet vest with gold tassel braid. Includes gold sash, satin harem pants and jeweled turban.  
(Shoe covers and sword not included)  
(Four-Piece Set)



Style 11156

"Scarecrow"

S, M, L, XL

Adorable off-the-shoulder button-front peasant dress with plaid patches and straw trim. This versatile costume can be worn with or without included Roxie short. Includes matching boot toppers, straw hat, rope choker, belt and wrist ties.  
(Seven-Piece Set)







*Dreamgirl* Animal Instincts

Styles 12013, 12014, 12314 and 11916





New



**Style 12013**

"Say Cheese!"

S, M, L, XL

This adorable mouse costume is so fuzzy and warm! Includes a sherpa hooded dress and furry inset heart bodice detail, fingerless gloves and boot covers. Also includes a satin cheese printed bow tie and removable tail.  
(Five-Piece Set)

New



This adorable cat costume is so fuzzy and warm! Includes a sherpa hooded dress with paw print appliqué back detail, front zipper, pom poms and boot covers. Also includes a sherpa bell choker and removable tail.  
(Four-Piece Set)

(Shown With)  
Style 12314 "Faux Ombre Layered Wig"

**Style 12014**

"Black Cat"

S, M, L, XL  
1X, 2X, 3X







*New*

Style 12019

"Tigress"

S, M, L, XL

Photo real tiger printed brushed spandex hooded catsuit has plush trim on front yoke and around the opening of the hood, as well as contrast ears. Also includes detachable tail. (Two-Piece Set)

(Shown With)  
Style 12316  
Pinup Wig w/bangs







Pairs with style 10671  
"DALMATIAN DIVA"

Style 10624

"Dalmatian Darling"

S, M, L, XL

Dalmatian-print, stretch, crushed velvet dress with hood, faux-fur trim and removable tail. Includes matching boot covers and dog-collar choker.  
(Three-Piece Set)



Gold stretch velour sleeveless lion top with attached tail and faux-fur hood with ears. Includes matching fingerless gloves.  
(Pants not included)  
(Two-Piece Set)

Style 11131

"King of the Jungle"

M, L, XL, XXL





*Dreamgirl*® What A Character

Styles 12010 and 12070



New



#### Style 12010

"The Ringmaster"

M, L, XL, XXL

This dark ringmaster costume includes a sleeveless satin tailcoat with printed lapels, an adjustable vest with attached dickie, bow tie and removable pocket chain. Also includes a collapsible velvet top hat with satin band.  
(Four-Piece Set)

(Shown With)  
Style 12070 "Loose Beach Wave Bob w/ Dark Roots"

#### Style 11130

"The Lion Tamer"

S, M, L, XL

Rich red velvet top with gold fringed epaulets, lion head buttons and gold sequin trimmed peplum. Includes stretch leggings, top hat and belt with lion head buckle.  
(Gloves, whip and jewelry not included)  
(Four-Piece Set)



New



**Style 11996**

"Love Me Tender"

S, M, L, XL

Iconic 60's styled faux two piece fringe dress with mesh midriff inset. Includes 3 white bangle bracelets.  
(Two- Piece Set)

(Shown With)  
Style 12309 "Rock Queen Wig"

New



A leather look dress version of this iconic rock & roller, has a stand-up collar and foil and glitter prints on the front dress and belt. Includes a detachable cape with vivid gold foil lining.  
(sunglasses and microphone not included)  
(Three-Piece Set)

(Shown With)  
Style 12308 "Rock King Wig"

**Style 11999**

"Queen of Rock"

S, M, L, XL



## Style 12001

"90's Rap"

M, L, XL, XXL

Gold satin jacket with functioning gold buttons has disco dot accents at the shoulder and sleeve. Includes black polyester harem pants with an attached coordinating disco dot cummerbund. (sunglasses, necklace and microphone not included) (Two-Piece Set)

*New*





New



Style 12002  
"Tiger-Luscious"  
M, L, XL, XXL

Wild foil tiger printed button-down polyester shirt.  
Includes tiger tooth necklace.  
(Two-Piece Set)  
(Shown With)  
Style 12302 "Unisex Mullet Wig"

New



A wild foil tiger printed dress has an elastic belt with a tiger patch.  
Also includes reflective lens sunglasses.  
(Three-Piece Set)  
(Shown With)  
Style 12302 "Unisex Mullet Wig"

Style 12020  
"Tiger Babe"  
S, M, L, XL



Style 12000

"Crazy For You"

M, L, XL, XXL

*New*

Jagged edged poly poplin tunic with faux leather straps and silver hardware has extra long sleeves with slits for your hands that velcro at the back for an authentic crazy-cool straitjacket look! (One-Piece Set)





## Style 9959

"Cat Fight"

S, M, L, XL

Metallic black, stretchy, zip-front jumpsuit with ripped front pant leg detailing and attached tail. Includes headpiece with mask and belt. (Whip and jewelry not included) (Three-Piece Set)

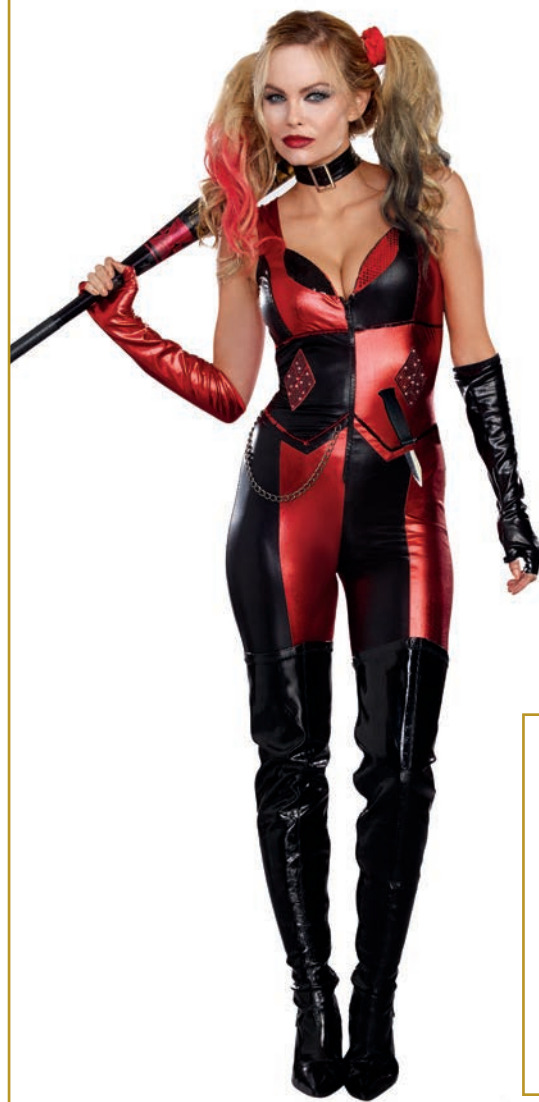


## Style 10321

"Harlequin Blaster"

S, M, L, XL

Sleek metallic jumpsuit with zipper-front bodice, sequin detailing and an attached chain. Includes fingerless gloves, choker and knife. (Hair ties and bat not included) (Four-Piece Set)



## Style 11928

"Femme Fatale"

S, M, L, XL

This adorable pink dress has a faux-fur bra section and hemline. Also includes a satin ribbon bow barrette, and shoe pom poms. (Wig not included) (Three-Piece Set)

(Shown With)  
Style 11912  
"Retro Bouffant Wig"



## Style 10671

"Dalmatian Diva"

S, M, L, XL  
1X, 2X, 3X



Dalmatian-print midi dress with front zipper, faux-fur collar and ribbon-tie back slit. Includes shiny vinyl belt and bone accessory. (Wig, jewelry and cigarette holder not included) (Three-Piece Set)

(Shown With)  
Style 10675  
"Dalmatian Diva Wig"





# *Dreamgirl* Extra-Curricular Activities







Styles 12011, 10655 and 11374



New



Style 12011

"Start Your Engines"  
(Men's)

M, L, XL, XXL

Color blocked poly poplin coveralls with elasticized back waist for fit, has contrast piping, printed patches and a front zipper. Includes coordinating baseball style cap.  
(Two-Piece Set)



Style 10655

"Start Your Engines"  
(Women's)

S, M, L, XL



Sleek zipper-front jumpsuit with checkered sides, "racing" and flame screen-print details and authentic-looking race patches. Includes matching black belt.  
(Flag not included)  
(Two-Piece Set)



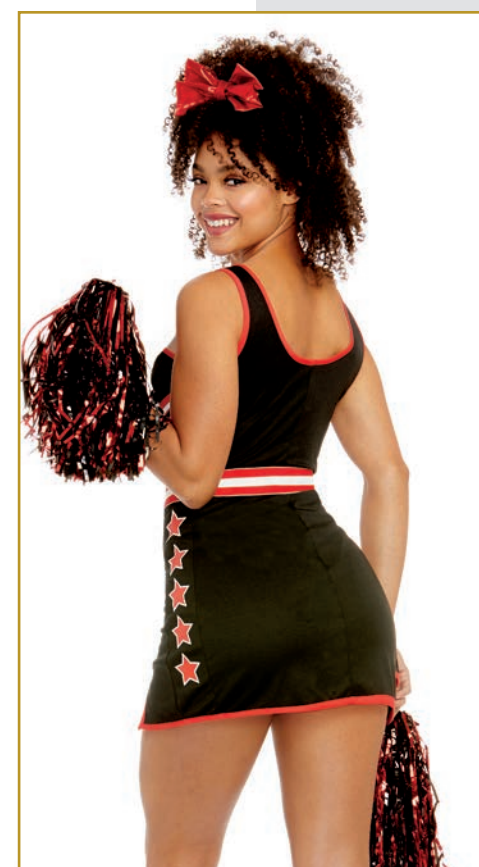
*New*

Style 12017

"Cheer Team USA"

S, M, L, XL

She's got team spirit in this printed poly dress with athletic trims, stars and contrast binding. Includes an oversized foil hair bow, panty and mylar pom poms. (Five-Piece Set)



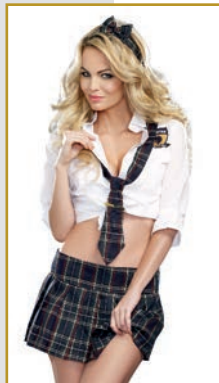


## Style 9419

"Prep School"

S, M, L, XL

Button-front, white, collared shirt with a "Manhattan Preparatory School" patch and woven-plaid pleated schoolgirl skirt. Includes tie with clip and headband. (Knee-high socks not included) (Four-Piece Set)



## Style 9848

"Fancy Girl"

S, M, L, XL

Woven plaid jacket with matching pleated skirt. (Knee-high socks and cell phone not included) (Two-Piece Set)



## Style 6469

"Grand Slam"

S, M, L, XL  
1X/2X, 3X/4X



Stretch-knit, snap-front dress with sequin embroidered "Grand Slam" appliqué and heat transfer number "10" detail on back. Includes stretch-knit short with elastic waist, baseball cap and athletic knee-high socks. (Baseball mitt and baseball not included) (Four-Piece Set)



## Style 11581

"Tackle"

S, M, L, XL  
1X, 2X, 3X



Playful football jersey with zip sides and matching shorts. Also includes athletic socks. (Bra top and football not included) (Three-Piece Set)







Style 10322

"World Champion"  
(Men's)

M, L, XL, XXL

Black and gold satin robe with tie belt and gold metallic "World Champion" screen print. Includes boxing gloves, shorts, and "World Champion" belt.  
(Five-Piece Set)



Style 10315

"World Champion"  
(Women's)

S, M, L, XL

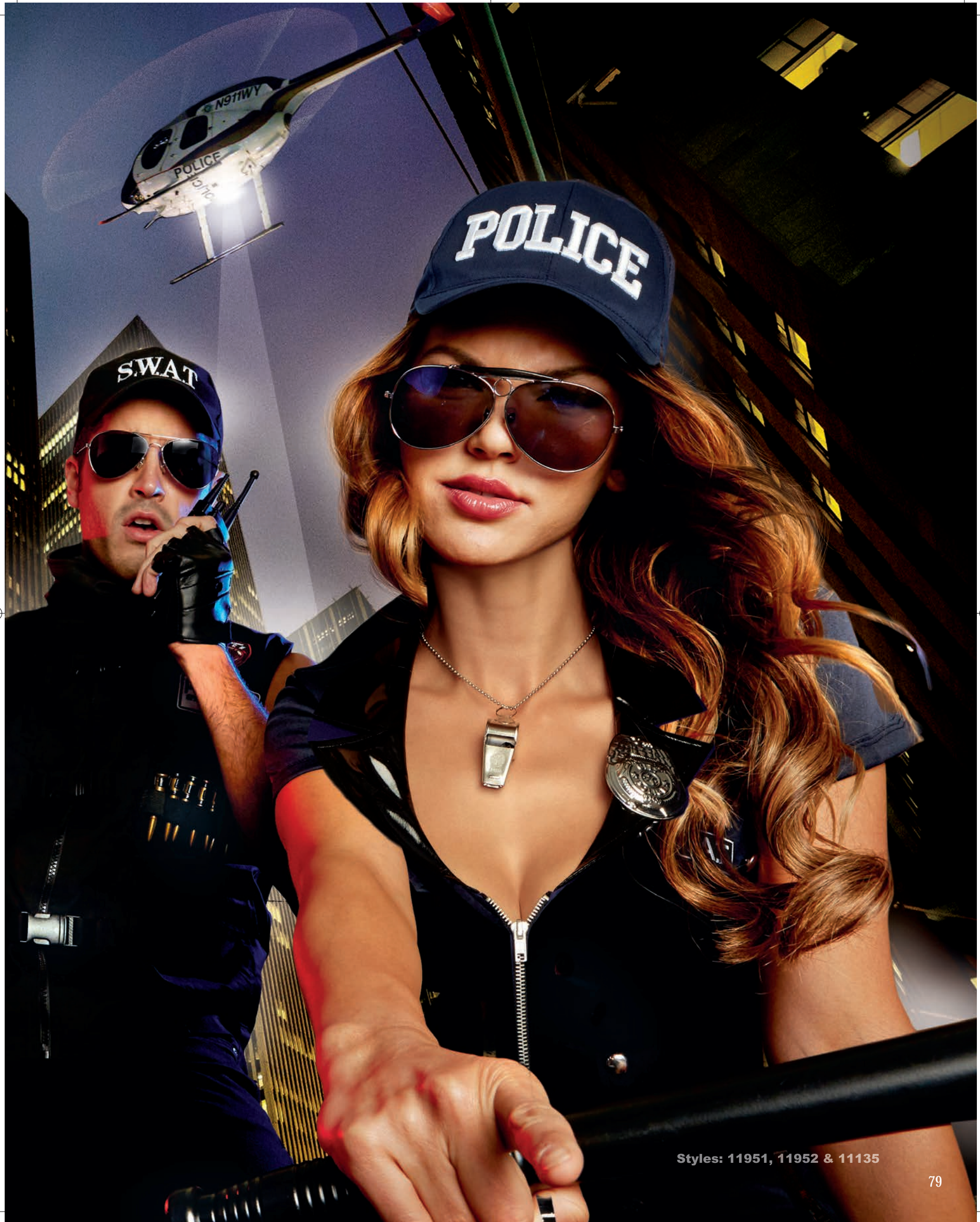
Black satin boxing robe with belt. Includes lace-up top, boxing gloves and skirt with loop to hold gloves, athletic striping and screen prints.  
(Five-Piece Set)



# *Dreamgirl*® 24/7 On Call







Styles: 11951, 11952 & 11135



Style 12272

"My Hero"

M, L, XL, XXL

Firefighter costume includes poly poplin sleeveless vest and pants with reflective tape accents. Also includes a baseball-style cap with printed patch.  
(Three Piece Set)

*New*





## Style 11951

"Special Ops"  
(Women's)

S, M, L, XL

Sleek jumpsuit with zipper front closure and special operations patches. Also includes an armband with a knife, arm tie, leg tie with badge, tactical belt with bullets, handcuffs, knife, and bullet bracelets. (Sunglasses and gloves not included)  
(Ten-Piece Set)



## Style 11952

"Special Ops"  
(Men's)

M, L, XL, XXL

Rugged tactical vest with bullet strips and special operations patches. Includes S.W.A.T. Cap, bullet strips, knife, half-faced mask and handcuffs. (Gloves, pants and sunglasses not included)  
(Six-Piece Set)



## Style 8816

"Dirty Cop Officer  
Anita Bribe"

S, M, L, XL

Black bengaline stretch knit dress with belt and police patches on shoulders. Costume includes police hat with badge pin, "Officer Anita Bribe" nameplate and removable police badge. (Sunglasses, handcuffs, pantyhose and baton not included)  
(Five-Piece Set)

(Shown With)  
Style 7034  
"Fishnet Pantyhose"



## Style 8817

"Dirty Cop Officer  
Ed Banger"

M, L, XL, XXL

Black sleeveless collared shirt with front pockets, police patch and removable neck tie. Includes police hat with badge pin, "Officer Ed Banger" nameplate, removable police badge and arm band. (Sunglasses, handcuffs, baton and pants not included)  
(Six-Piece Set)





## Style A9981

"S.W.A.T. Police"

S, M, L, XL  
1X/2X, 3X/4X



Black knit dress with front zipper and "S.W.A.T. Police" screen print. on back. Includes hat and police badge. (Baton and sunglasses not included)  
(Three-Piece Set)



## Style 10719

"Officer Pat U. Down"

S, M, L, XL

Sleek, double-breasted dress with shiny patent leather trim, police badges and "Police" screen print. Includes belt, police hat with badge, handcuffs, fingerless gloves with "Jail Time" screen print and "Officer Pat U. Down" nameplate.  
(Sunglasses, baton and jewelry not included)  
(Seven-Piece Set)



## Style 10240

"Lieutenant Ivana Misbehave"

S, M, L, XL

Sleek navy jumpsuit with shiny patent leather trim. Includes utility belt, police hat with badge, radio/speaker, leg garters, handcuffs, police badge pin and "Lieutenant Ivana Misbehave" nameplate.  
(Sunglasses and baton not included)  
(Eight-Piece Set)



## Style 10284

"All Aboard"

S, M, L, XL  
1X/2X, 3X/4X



Adorable retro-styled dress with sailor collar, sequin anchors and a full circle skirt. Sailor hat included. (Earrings not included) (Two-Piece Set)



## Style 11570

"Fighter Pilot"

S, M, L, XL

Stylish pilot's woven dress with military buttons, flight patches and belt, can be unbuttoned to reveal included shorts. (Sunglasses, jewelry and gloves not included) (Three-Piece Set)



## Style 11639

"Keep it Clean"

S, M, L, XL  
1X, 2X, 3X



This flirty maid's costume includes an adorable black dress with white ruffled detailing. Also includes ruffled headpiece, and apron. (Gloves, stockings and feather duster not included) (Three-Piece Set)

(Shown With)  
Style 10342  
"Bow Top Stockings"  
Black, White  
O/S, O/S Queen

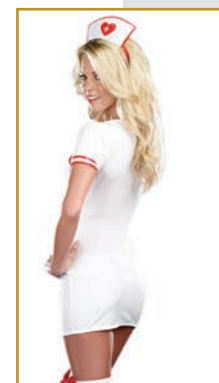


## Style A8922

"R.eally - N.aughty Nurse"

S, M, L, XL

Nurse dress with attached apron and nurse hat. (Thigh highs, clipboard and pen not included) (Two-Piece Set)








**Style 5236** Button front jacket with satin and gold trim details. Includes pilot hat, collar with necktie and removable "Mile High Pilot Hugh Jorgan" name badge. (Pants not included) (Four-Piece Set)  
"Mile High Pilot Hugh Jorgan"  
M, L, XL, XXL



Midi-length, stretch-knit dress with wings patches and gold detailing. Includes captain's hat, "Mile High Captain" pin and belt. (Four-Piece Set)

**Style 10685**  
"Flight Captain"

S, M, L, XL  
1X, 2X, 3X 



*Dreamgirl*® Seasonal Sweeties

Style 11975



## Style 11975

"Santa's Helper"

S, M, L, XL

Adorable hooded bodysuit with faux fur trim and snap crotch closure. Also includes boot toppers and Santa belt. (Three-Piece Set)

(Shown With)  
Style 5218  
"Luna Glove"  
O/S



## Style 8870

"Santa Baby"

S, M, L, XL

Sexy Santa wants to make all your wishes come true! Spread some Yuletide cheer in this exquisite red velvet holiday dress with faux fur trim, long sleeve shrug, belt, bell stocking toppers and Santa's hat! Red stretch crush velvet dress with faux fur trim at neckline and hem. Includes matching long sleeve shrug, belt, jingle bell stocking toppers and Santa's hat. (Thigh highs and gloves not included) (5 piece set)

(Shown With)  
Style 7031  
"Sheer Thigh Highs with  
Back Seam"  
O/S



## Style 11625

"Ms. Claus"

XS, S, M, L, XL

Festive and fun stretch velvet red jumpsuit with fur trim and oversized hood has an adorable candy cane zipper pull. Also includes belt and fur boot toppers. (Candy Cane and gloves not included) (Three-Piece Set)

(Shown With)  
Style 5218 "Luna Glove"  
O/S







*Dreamgirl* Plus costumes

Styles 12018X and 11352



New



Style 12018X

"Boo-Tiful Witch"

S, M, L, XL  
1X, 2X, 3X

Bewitching corset-style velvet lace-up bodice dress with spiderweb printed light weight tulle tiered handkerchief skirt is lined in a contrasting vibrant purple. Coated belt with glitter buckle, choker and curved witch hat with purple contrast lining and hat band, and a dangling spider complete her look! (broom not included) (Four-Piece Set)

(Shown With)  
Style 7819 "Dominique Gloves"  
Style 11352 "Long Wavy Layered Ombre Wig"

New



Gorgeous black velvet gown has a lace accented stand up collar, sleeves and godets filled with delicate lace that matches the flowing lace sleeve detail; with red sequin piping. Center front applique has faux leather and sequin accents. Also includes gothic cross necklace. (Two-Piece Set)

Style 12271X

"Vampira"

S, M, L, XL  
1X, 2X, 3X



*New*

Style 12282X

"Miss Enchantment"

S, M, L, XL  
1X, 2X, 3X

This enchanting witch costume includes a black shredded knit dress lined in lime green. It has attached sleeves and a gauze cape. Also includes the belt with an oversized buckle and witch hat.  
(Three-Piece Set)

(Shown with)  
Style 11329  
"Extra-Long Haunted  
Black/White Mix Wig"





## Style 11943X

"Big Bad Red"

S, M, L, XL  
1X, 2X, 3X

Gothic styled dress with large hook and eye closures and jagged hemline. Includes hooded lace cape, and wolf head choker.

(Gloves, basket and fishnets not included)  
(Three-Piece Set)

(Shown With)  
Style 7819  
"Dominique Glove"  
O/S

Style 7034  
"Fishnet Pantyhose"  
O/S



## Style 11149X

"The Sorceress"

S, M, L, XL  
1X, 2X, 3X

Exquisite midnight blue velvet gown with attached sparkling silver mystical-print sheer cape. Includes shimmering rhinestone headpiece. (Scepter not included)  
(Two-Piece Set)



## Style 10680X

"Lady of The Dead"

S, M, L, XL  
1X, 2X, 3X

Flirty sugar skull dress with ruffled neckline, brightly-colored skeleton screen print, satin ribbon belt at waist and multi-tiered skirt with sugar skull detailing. Includes beaded cross necklace. (Headpiece and gloves not included)  
(Three-Piece Set)

(Shown With)  
Style 10341  
"Midnight Madness  
Gloves"  
O/S



## Style 10639X

"Frightfully Beautiful"

S, M, L, XL  
1X, 2X, 3X

Spooky, luxe black velvet gown with sequin-applique bodice, lace paneling in skirt and lace waterfall sleeves. (Rose and jewelry not included)  
(One-Piece Set)

(Shown with)  
Style 11679  
"Long Straight Wig"





➤ *New*

Style 12283X

"Queen Cleopatra"

S, M, L, XL  
1X, 2X, 3X

This captivating Cleopatra costume includes a velvet top and shimmering gold skirted dress with slits, inset striped waistband and dramatically long, cold-shoulder chiffon sleeves. The faux leather collar and belt front panel are glitter printed with jewels and trim accents.

(Two-Piece Set)

(Shown with)  
Style 10832  
"Egyptian Queen Wlg"  
Style 11656  
"Cleopatra Headpiece"





## Style 10290X

"Exquisite Cleopatra"

S, M, L, XL  
1X/2X, 3X/4X

Exquisite velvet gown with Egyptian pattern, front slits and gold trim detailing. Includes Egyptian collar and belt. (Jewelry and headpiece not included) (Three-Piece Set)



## Style 10671X

"Dalmatian Diva"

S, M, L, XL  
1X, 2X, 3X

Dalmatian-print midi-dress with front zipper, faux-fur collar and ribbon-tie back slit. Includes shiny vinyl belt and bone accessory. (Wig, jewelry and cigarette holder not included) (Three-Piece Set)

(Shown With)  
Style 10675  
"Dalmatian Diva Wig"



## Style 9477X

"Little Red"

S, M, L, XL  
1X/2X, 3X/4X

Beautifully-detailed fairytale dress with underwire foam cups with pleated ruffles, embroidered heart trim and lace-trimmed apron. Includes full-length, hooded, satin cape. (Basket, thigh highs and satin gloves not included) (Two-Piece Set)

(Shown With)  
Style 5218 "Luna Gloves"  
O/S



## Style 10669X

"Gypsy"

S, M, L, XL  
1X, 2X, 3X

Peasant-style dress with velvet lace-up bodice, gold trim, multi-tiered handkerchief skirt with paisley print and gold coin detailing. Includes matching head wrap with gold coin trim. (Jewelry and tarot cards not included) (Two-Piece Set)





## Style 11134X

"Saloon Gal"

S, M, L, XL  
1X, 2X, 3X

Ultra-flattering,  
western-styled  
off-the-shoulder mini  
dress with attached skirt  
and distressed leather-look  
lace-up waist corset.  
(Petticoat not included)  
(Two-Piece Set)

(Shown With)  
Style 7034  
"Fishnet Pantyhose"  
O/S



## Style 11171X

"Hippie Hottie"

S, M, L, XL  
1X, 2X, 3X

Groovy starburst tie-dye  
dress and faux-suede  
fringe vest with removable  
"Flower Power" and  
"Peace" pins. Includes  
head tie, sunglasses, arm  
tie and peace sign  
necklace.  
(Bracelet not included)  
(Eight-Piece Set)



## Style 11106X

"Disco Diva"

S, M, L, XL  
1X, 2X, 3X

Foxy black knit dress  
with metallic  
holographic disco dot,  
sweetheart neckline  
and side slit. Includes  
stretch pink sequin  
belt and disco ball  
necklace.  
(Additional jewelry not  
included)  
(Three-Piece Set)



## Style 11970X

"Disco Babe"

S, M, L, XL  
1X, 2X, 3X

Glittering 1970's disco  
dress with bell sleeves,  
gold sequin belt and Disco  
necklace.  
(Three-Piece Set)





## Style 10210X

"Downton Doll"

S, M, L, XL  
1X/2X, 3X/4X

Exquisite midnight-blue, embossed stretch velvet dress with jeweled neckline and sequin-fringe trim. Includes jeweled headpiece with ostrich feather. (Jewelry, boa, cigarette holder and gloves not included) (Two-Piece Set)

(Shown With)  
Style 5218  
"Luna Glove"  
O/S



## Style 11938X

"Roxy's Revenge"

S, M, L, XL  
1X, 2X, 3X

Stunning dress with ombré sequin design and shimmering neckline piece. Includes sequin headband with ostrich feather. (Boa, gloves and cigarette holder not included) (Two-Piece Set)

(Shown With)  
Style 5218  
"Luna Glove"  
O/S



## Style 10700X

"Swanky Flapper"

S, M, L, XL  
1X, 2X, 3X

1920's-inspired dress with off-the-shoulder fringe detail and gold intricately-embroidered neckline & hemline trim. Includes gold sequined headpiece with ostrich feather. (Gloves, boa, jewelry and cigarette holder not included) (Two-Piece Set)



## Style 11545X

"Miss Ritz"

S, M, L, XL  
1X, 2X, 3X

Exquisite rich purple flapper dress with off-the-shoulder fringe sleeves and back zipper. Includes sequin headpiece with ostrich feather. (Gloves, cigarette holder, and jewelry not included) (Two-Piece Set)

(Shown With)  
Style 5218 "Luna Glove"  
O/S







*New*

Style 12014X

"Black Cat"

S, M, L, XL  
1X, 2X, 3X

This adorable cat costume is so fuzzy and warm. Includes a sherpa hooded dress with paw print appliqué back detail, front zipper, pom poms and boot covers. Also includes a sherpa bell choker and removable tail. (Four-Piece Set)

(Shown With)  
Style 12314  
"Faux Ombré Layered Wig"





## Style 11581X

"Tackle"

S, M, L, XL  
1X, 2X, 3X

Playful football jersey with zip sides and matching shorts with athletic detailing. Also includes athletic socks. (Football and bra top not included)  
(Three-Piece Set)



## Style 6469X

"Grand Slam"

S, M, L, XL  
1X/2X, 3X/4X

Stretch-knit, snap-front dress with sequin embroidered "Grand Slam" appliqué and heat transfer number "10" detail on back. Includes stretch-knit short with elastic waist, baseball cap and athletic knee high socks. (Earrings not included)  
(Four-Piece Set)



## Style 10719X

"Officer Pat U. Down"

S, M, L, XL  
1X, 2X, 3X

Sleek, double-breasted dress with shiny patent leather trim, police badges and "Police" screen print. Includes belt, police hat with badge, handcuffs, fingerless gloves with "Jail Time" screen print and "Officer Pat U. Down" nameplate. (Sunglasses, baton and jewelry not included)  
(Seven-Piece Set)



## Style A9981X

"S.W.A.T. Police"

S, M, L, XL  
1X/2X, 3X/4X

Black knit dress with front zipper and "S.W.A.T. Police" screen print on back. Includes hat and police badge. (Baton and sunglasses not included)  
(Three-Piece Set)





## Style 11963X

"Ships Ahoy"  
(Women's)

S, M, L, XL  
1X, 2X, 3X

Ultra-flattering,  
off-the-shoulder pirate dress  
with multi-tiered skirt  
and attached faux leather vest.  
Head scarf also included.  
(Sword not included)  
(Two-Piece Set)



## Style 10685X

"Flight Captain"

S, M, L, XL  
1X, 2X, 3X

Midi-length, stretch-knit  
dress with gold detailing.  
Includes pilot hat,  
"Mile High Captain"  
pin and belt.  
(Four-Piece Set)



## Style 10284X

"All Aboard"

S, M, L, XL  
1X/2X, 3X/4X

Adorable, retro-styled  
dress with sailor collar,  
sequin anchors and  
full circle skirt.  
Includes matching  
sailor hat.  
(Two-Piece Set)



## Style 11639X

"Keep It Clean"

S, M, L, XL  
1X, 2X, 3X

This flirty maid's costume  
includes an adorable  
black dress with white  
ruffled detailing. Also  
includes ruffled headpiece  
and apron. (Gloves,  
stockings and feather  
duster not included)  
(Three-Piece Set)





# *Dreamgirl* Accessories



Styles 12285, 11651, 10830 and 11689



New



GET THE LOOK

Style 11651

"Mythical Ram's Horn Headpiece"

O/S

Ram's Horn headpiece with black roses, rhinestones and chain detailing. (One-Piece Set)

Style 10830

"Evilicious Bodysuit"

S/M, M/L

Black bodysuit with studded pentagram neckline and snap-crotch closure. (One-Piece Set)

Pair with Dreamgirl's Style 10831 "Sheer Tie-Front Skirt" to complete your wicked look

Skeleton printed sheer mesh fingerless gloves and leggings. (Two Piece Set)

Style 12285

"Skeleton Gloves & Leggings Kit"

(Shown With)

Style 11651 "Mythical Ram's Horn Headpiece", Style 10830 "Evilicious Bodysuit", Style 11689 "Long Layered Wig"

S, M, L, XL





New



GET THE LOOK

Style 12059  
"Horn & Skull Headpiece"  
O/S

Molded horn headpiece with skull, roses and metal chain and jeweled detailing.  
(One- Piece Set)

(Shown With)  
Style 11338 "Black/Burgundy Ombre Wig,  
Style 11973 "Pentagram Starter Dress"  
Style 7819 "Dominique Glove"

Sleek black dress with pentagram neckline design.  
(Wig and fishnet stockings not included)  
(One Piece Set)

(Shown With)  
Style 7034 "Fishnet Pantyhose"  
O/S

Style 11973  
"Pentagram Starter Dress"

S, M, L, XL



New



Style 12281

"Hell Yeah Poncho"

O/S

Hooded velvet poncho with armhole slits  
and filled devil horns.  
(One Piece Set)

(Shown With)

Style 11685 "Long Wavy Gray Mix/Dark Gray Faux Ombré"

New



Hooded velvet poncho with armhole slits and foil  
printed crescent moon.  
(One Piece Set)

(Shown With)

Style 11350 "Long Wavy Layered Steel Blue/Bright Blue Ombré Wig"

Style 12280

"Witch Poncho"

O/S



Style 11551

"Vamp Cape"

O/S

Rich black velvet cape with  
rose detail and velcro  
closure.  
(One-Piece Set)



Style 11192

"Lace Cape"  
Black

O/S

Gothic-inspired black  
lace hooded cape  
with ribbon-tie front  
closure.  
(One-Piece Set)



Style 11979

"Skeleton Dress"

S, M, L, XL

Glow-in-the-dark halter skeleton dress.  
(Fishnets and wig not included)  
(One-Piece Set)

(Shown With)  
Style 7034 "Fishnet Pantyhose"  
O/S





## Style 12211

"Halloween Bodysuit"

S/M, M/L

Fun black bodysuit with glow-in-the-dark Jack-O'-Lantern face, strappy neckline and snap-crotch closure. (One-Piece Set)

(Shown With)  
Style 7034  
"Fishnet Pantyhose"  
O/S

## Style 10831

"Sheer Tie-Front Skirt"

S/M, M/L

Sheer tulle maxi skirt with satin waist and tie closure. (One-Piece Set)





Shown with 11350 Long Wavy  
Ombre Layered Wig



Spooky-licious spider headpiece with large spider with black  
rhinestone eyes and veil.  
(One-Piece Set)

Style 11659

"Spider Headpiece"

O/S



Black velvet witch hat with antiquated style buckle and fringe.  
(One-Piece Set)

Style 11950

"Wicked Witch Hat"

O/S





Style 11982

"Black Veil Headpiece"

O/S

Stunning layered black veil  
headband with black  
rose trim.  
(One-Piece Set)

Style 11194

"Gothic Headpiece"

O/S

Headpiece with red & black  
flowers, skulls and attached  
black tulle veil.  
(One-Piece Set)



Shown with 11324 Long  
Straight Ombré Wig



Style 10003

"Day of the Dead  
Headpiece"

O/S

Headband with roses and  
black lace veil.  
(Jewelry not included)  
(One-Piece Set)





**Style 10329**  
"Pharaoh Headpiece"  
O/S

Black velvet and gold satin ribbon Egyptian headpiece. (Cape/collar and necklace not included)  
(One-Piece Set)



**Style 11656**  
"Cleopatra Headpiece"  
O/S

Exquisite gold Cleopatra headpiece with Cobra, turquoise rhinestone embellishment and gold beads.  
(Egyptian/Cape Collar not included)  
(One-Piece Set)



**Style 10799**  
"Pirate Hat"  
(Women's)  
O/S

Large velvet pirate hat with gold trim, satin bows and lace detail.  
(One-Piece Set)



**Style 11977**  
"Flapper Headpiece"  
O/S

Exquisite 1920's sequin and jeweled headpiece with ostrich feathers.  
(One-Piece Set)





Exquisite rhinestone headpiece has clips on either side for attaching to hair.  
(One-Piece Set)

Style 9520  
"Glittering Rhinestone Headpiece"

O/S



Magnificent gold headpiece dripping in rubies and gold coins. (Necklace not included)  
(One-Piece Set)

Style 9516  
"Dripping Rubies Headpiece"

O/S



Gold metal crown with coins.  
(Earrings not included)  
(One-Piece Set)

Style 9523  
"Shimmering Gold Coin Crown"

O/S



Golden headpiece with cascading rhinestones and adjustable back.  
(One-Piece Set)

Style 9515  
"Shimmer Rhinestone Headpiece"  
Gold/Black, Gold/Crystal

O/S



Style 12278

60's Daisy Dress

S, M, L, XL

60's style daisy printed  
polyester dress.  
(One-Piece Set)

(Shown With)  
Style 11874 "Mid-Length  
Curly Wig"

*New*







Full fringe dress with adjustable shoulder straps.  
(Jewelry, gloves, cigarette holder, headpiece and  
fishnet pantyhose not included)  
(One-Piece Set)

Style 8912

"Flapper"  
Black

S, M, L, XL



Style 8909

"Blue Gingham Dress"

S, M, L, XL

Blue and white checked  
dress with white  
chiffon sleeves.  
(Thigh highs, hair bows,  
petticoat, dog and basket  
not included)  
(One-Piece Set)



Style 8910

"Cave Girl"

S, M, L, XL

One-shoulder, animal-print,  
brushed-knit dress.  
(Bone barrette not  
included)  
(One-Piece Set)



Style 12279

"Harem Pants"

M, L, XL, XXL

Black polyester harem pants  
with elastic waistband and pant  
hem.

(One-Piece Set)

*New*







Shimmering black disco pants with disco dot print  
bell bottoms.  
(One-Piece Set)

Style 11649  
"Dancing Queen Pants"  
S/M, M/L



Style 9605  
"Men's Disco Pant"  
M, L, XL, XXL

Men's polyester  
flare-legged disco pants  
with shiny foil  
dot at hem. Elastic-back  
waist allows for  
adjustability.  
(One-Piece Set)



Style 4575  
"Roxie Hot Short"  
Black

S/M, M/L  
1X/2X, 3X/4X



Basic stretch-knit hot short  
with elastic waist.  
(One-Piece Set)



Style 0072

"Basic Unitard"

S/M, M/L

Cotton/Spandex  
adjustable-strap unitard.  
(One-Piece Set)



Style 0072X

"Basic Unitard"

1X/2X, 3X/4X



Cotton/Spandex  
adjustable-strap unitard.  
(One-Piece Set)



Style 9558

"Liquid Unitard"

S/M, M/L

Glossy, stretch-knit unitard can be used to  
create many different costumes.  
(One-Piece Set)







Style 8358

"Pretty N' Peasant"

Black, Red, White

S/M, M/L

Sexy off-the-shoulder knit top with elastic ruffled detail and bow accent. Great starter top for many costume ideas.  
(One-Piece Set)



Off-the-shoulder stretch knit top with blousy shirring and satin bow detail on neckline.  
(One-Piece Set)

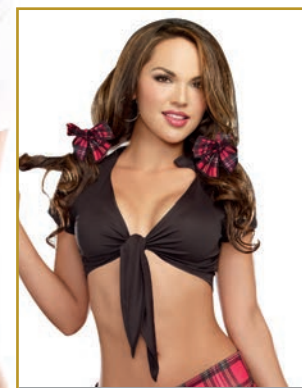
Style 8947

"Ho Garden Top"

S/M, M/L



Stretch-knit, plunging-neckline shirt with cap sleeve. Great starter shirt for many costume ideas.  
(One-Piece Set)



Style 8355

"All Tied Up"

Black, White

S/M, M/L 113





Style 11199  
"Unicorn Headpiece"  
O/S

Mystical headpiece with  
flowers, silver stars  
and unicorn horn & ears.  
(One-Piece Set)



Style 9969  
"Gauntlet Gloves"  
O/S

Silver fingerless gloves.  
(One-Piece Set)



Style 11191  
"Iridescent Sparkly Skirt"  
S/M, M/L

Shimmering white open-front holographic sheer  
skirt with ribbon waist band and tie-front closure.  
(One-Piece Set)



Style 9971  
"Galaxy Gun"  
O/S

Silver galaxy gun with lights  
and sound. Requires  
AA batteries. (Batteries not  
included)  
(One-Piece Set)

Style 9970  
"Galaxy Glasses"  
Silver plastic co-ed sunglasses.  
(One-Piece Set)  
O/S





Shiny, stretch-knit, opera-length gloves.  
(One-Piece Set)

Style 7819  
"Dominique Glove"  
O/S



Black opera-length fingerless gauntlet gloves  
with venise lace design.  
(One-Piece Set)

Style 10341  
"Midnight Madness  
Gloves"  
O/S



Rich black velvet gauntlet gloves with  
scalloped lace ruffle.  
(One-Piece Set)

Style 11983  
"Lacy Gloves"  
O/S



Stretch satin opera-length gloves.  
(One-Piece Set)

Style 5218  
"Luna Glove"  
Black, White  
O/S





Style 10342

"Bow Top Stockings"  
Black, White  
O/S

Sheer thigh-high stockings with  
two sets of bows with pins.  
(One-Piece Set)





Sheer nude pantyhose with black opaque knitted lace-up boot design. Pantyhose can be worn with lace-up detail in the front or in the back. (One-Piece Set)

Style 0220H

"Lace-Up Boot Pantyhose"

O/S



Fishnet pantyhose with back seam. (One-Piece Set)

Style 7034

"Fishnet Pantyhose"

O/S



Sheer pantyhose with opaque knitted garters and thigh high stocking details. (One-Piece Set)

Style 0217H

"Sheer Pantyhose with Garters"

O/S



Raw-top, diamond-net thigh-high stockings. (One-Piece Set)  
(shorts with garters not included)

Style 0215H

"Fishnet Raw Top Stockings"

O/S





Style 7031

"Sheer Thigh Highs with Back Seam"  
(One-Piece Set)  
Black, Red, White

O/S



Style 7030, 7030X

"Sheer Thigh Highs"  
Sheer thigh highs with stay-up silicone lace top.  
(One-Piece Set)  
Black, White

O/S, O/S Queen





# Costume Collection Guide

The option to place orders, check inventory & track order status is now at your fingertips... log onto [www.DGorders.com](http://www.DGorders.com)!



Women's US Size Chart															
	REGULAR SIZES									PLUS SIZES					
	XS	S	M	L	XL	S/M	M/L	L/XL	O/S	1X/2X	3X/4X	1X	2X	3X	O/S QUEEN
SIZE	0-2	2-6	6-10	10-14	14-16	2-8	8-14	14-16	2-14	16-20	22-24	16-18	20-22	24-26	16-22
CORSET SIZE		32	34	36	38							40	42	44	
CUP	A	A/B	B/C	C/D	D/E	A/B	B/C	C/D	B/C	D/DD	DD	D/DD	DD/DDD	DDD/F	D/DD
BUST	30"-32"	32"-34"	34"-36"	36"-38"	38"-40	32"-34"	36"-38"	38"-40	32"-38"	40"-46"	46"-52"	44"-46"	48"-50"	52"-54"	40"-50"
WAIST	23"-25"	25"-27"	27"-29"	29"-31"	31"-33"	25"-27"	28"-32"	31"-33"	24"-31"	36"-42"	42"-46"	38"-40"	42"-44"	46"-48"	36"-44"
HIP	32"-34"	34"-36"	36"-38"	38"-40"	40"-42"	34"-36"	38"-40"	40"-42"	34"-40"	44"-50"	50"-54"	46"-48"	50"-52"	54"-56"	42"-52"
INSEAM	32"	32"	32"	32"	32"	32"	32"	32"	32"	32"	32"	32"	32"	32"	32"
RISE	6 1/2"-7"	7"-7 1/2"	7 1/2"-8"	8"-8 1/2"	8 1/2"-9"	7 1/2"-8"	8"-8 1/2"	8 1/2"-9"	7 1/2"-8"	9"-9 1/2"	10"-10 1/2"	9"- 9 1/2"	10"- 10 1/2"	11"- 11 1/2"	9"- 10"
WEIGHT	85 lbs-90 lbs	90 lbs-120 lbs	120 lbs-140 lbs	140 lbs-160 lbs	160 lbs-180 lbs	90 lbs-130 lbs	130 lbs-160 lbs	160 lbs-180 lbs	90 lbs-160 lbs	165 lbs-220 lbs	220 lbs-265 lbs	180 lbs-220 lbs	220 lbs-260 lbs	260 lbs-300 lbs	180 lbs-260 lbs

Women's INTERNATIONAL Size Chart															
	REGULAR SIZES									PLUS SIZES					
	XS	S	M	L	XL	S/M	M/L	L/XL	O/S	1X/2X	3X/4X	1X	2X	3X	O/S QUEEN
UK	0-2	6-8	10-12	14-16	16-18	6-10	12-16	16-18	6-16	18-22	24-26	18-20	22-24	26-28	18-24
FRANCE/SPAIN	32-34	34-36	38-40	42-44	44-46	34-38	40-44	44-46	33-44	46-50	52-54	46-48	50-52	54-56	46-52
GERMANY	30-32	32-34	36-38	40-42	42-44	32-36	38-42	42-44	32-42	44-48	50-52	44-46	48-50	52-54	44-50
ITALY	34-36	38-40	42-44	46-48	48-50	38-42	44-48	48-50	38-48	50-54	56-58	50-52	54-56	58-60	50-56
JAPAN	5	7-9	11-13	15-17	19-21	7-13	13-17	19-21	7-17	21-25	25-29	21-23	25-27	29-31	21-25
CUP	A	A/B	B-C	C/D	D/E	A/B	B/C	C/D	B/C	D/DD	DD	D/DD	DD/DDD	DDD/F	D/DD
US CORSET SIZE		32	34	36	38							40	42	44	
BUST	76cm-81cm	81cm-86cm	86cm-91cm	91cm-97cm	97cm-102cm	81cm-86cm	91cm-97cm	97cm-102cm	81cm-97cm	102cm-117cm	117cm-132cm	112 cm -117 cm	122 cm -127 cm	132 cm-137 cm	112 cm- 127 cm
WAIST	54cm-64cm	64cm-69cm	69cm-74cm	74cm-79cm	79cm-84cm	61cm-66cm	71cm-81cm	79cm-84cm	61cm-86cm	91cm-107cm	107cm-117cm	96.5 cm -101.5 cm	107 cm -112 cm	117 cm -122 cm	91cm-112cm
HIP	81cm-86cm	86cm-91cm	91cm-97cm	97cm-102cm	101cm-107cm	86cm-91cm	97cm-102cm	101cm-107cm	91cm-102cm	112cm-127cm	127cm-137cm	117 cm -122 cm	127 cm -132 cm	137 cm -142.5 cm	107cm-135cm
INSEAM	81cm	81cm	81cm	81cm	81cm	81cm	81cm	81cm	81cm	81cm	81cm	81cm	81cm	81cm	81cm
RISE	16cm-18cm	18cm-19cm	19cm-20cm	20cm-22cm	22cm-23cm	19cm-20cm	20cm-22cm	22cm-23cm	19cm-20cm	23cm-24cm	25cm-27cm	23 cm - 24cm	25.5 cm - 26.5 cm	28 cm -29 cm	23cm-25cm
WEIGHT	39kg-41kg	41kg-54kg	54kg-64kg	64kg-73kg	73kg-85kg	41kg-59kg	59kg-73kg	73kg-85kg	41kg-73kg	75kg-100kg	100kg-120kg	81kg- 100kg	100kg- 118kg	118kg- 136kg	82kg-118kg

Men's US Size Chart					
	M	L	XL	XXL	M/L
SIZE	38-40	42-44	46-48	50-52	38-44
CHEST	38"-40"	42"-44"	46"-48"	50"-52"	38"-44"
WAIST	32"-34"	36"-38"	40"-42"	44"-46"	32"-38"
HIP	39"-41"	43"-45"	47"-49"	51"-53"	39"-45"
INSEAM	32"	32"	32"	32"	32"
WEIGHT	140-150 lbs	150-200 lbs	200-250 lbs	250-300 lbs	140-200 lbs

Men's INTERNATIONAL Size Chart					
	M	L	XL	XXL	M/L
UK	38-40	42-44	46-48	50-52	38-44
EU	48-50	52-54	56-58	60-62	48-54
JAPAN	40-42	44-46	48-50	52-54	40-46
CHEST	97cm-102cm	106cm-112cm	117cm-123cm	127cm-132cm	97cm-112cm
WAIST	81cm-86cm	91cm-97cm	102cm-107cm	113cm-117cm	81cm-97cm
HIP	99cm-104cm	109cm-114cm	119cm-124cm	130cm-135cm	99cm-114cm
INSEAM	81cm-84cm	81cm-84cm	81cm-84cm	81cm-84cm	81cm-84cm
WEIGHT	64kg-68kg	68kg-91kg	91kg-113kg	113kg-136kg	64kg-91kg

Dreamgirl Catalog Calendar		
Catalogue	Month Issued	Duration
Collection	November	November-October
Costume Collection	January	January-October
Simply Sexy	February	February-June
Fall/Holiday	June	June-February



# United States Dreamgirl Sales Representatives and Showrooms

**Gihan Gabor**  
National Sales Manager

Tel. +1-650-888-6000  
Email: ggabor@dgbrands.com

International Sales  
Tel. +1-323-268-0220  
sales@dgbrands.com  
5548 Lindbergh Lane  
Bell, CA 90201

**IL, WI, MN, IN**  
Bonnie W. Brunton  
Tel. +1-630-247-8061  
Fax +1-866-415-2617  
Email: blbrunton@gmail.com

**TX, OK, LA, AR, MS**  
Stacey Singleton  
Tel. +1-210-416-1206  
Email: Staceysingleton777@yahoo.com

**CT, DC, DE, MD, MA, ME, NH MI, NJ, NY, OH, PA, RI, VT,**  
Anthony Stefano  
Office +1-201-313-2505  
Cell +1-917-681-8214  
Fax +1-201-313-2506  
Email: AStefano1@verizon.net  
250 Gorge Road Suite 8A  
Cliffside Park, NJ 07010

**OR, WA, ID, AK, MT**  
Patty Barrington  
Cell. +1-206-724-7479  
Tel. +1-206-285-5747  
Fax +1-206-282-0210  
Email:  
patty@barringtonsales.onmicrosoft.com

**AL, FL, GA, KY, NC, SC, TN, VA, WV,**  
Anne Sabo  
Tel. +1-310-430-3544  
Email: asabo@dgbrands.com

**AZ, CO, IA, KS, MO, ND, NE, NM, SD, UT, WY**  
Kimberly and Dale Dillon  
Toll Free 800-681-1890  
Tel. +1-623-582-3085  
Fax +1-623-582-3370  
Email: dalio@hotmail.com  
Email: kimberlys.1@hotmail.com

**CA, NV, HI**  
Dave George  
Cell: 310.745.9401  
Email: davesellsdg@gmail.com

**DREAMGIRL CORPORATE HEADQUARTERS**

www.dreamgirldirect.com  
Beverly Bowdry  
Director of Account Operations  
US Toll Free Tel. +1-800-622-5686  
US Toll Free Fax +1-800-625-7363  
International Tel. +1-323-268-0220  
International Fax +1-323-268-4913  
Email: bbowdry@dgbrands.com  
5548 Lindbergh Lane  
Bell, CA 90201



## International Dreamgirl Sales Representatives and Showrooms

**Africa**

Algeria, Bostwana, Ivory Coast, Kenya, Libya, Mauritius, Morocco, Nigeria, South Africa, Sudan, Tunisia, Zimbabwe  
Canadex International Trading  
Hrant (Harry) Kaprielian  
5255 Henri Bourassa West, Suite: 200  
St Laurent, Quebec, Canada. H4R 2M6  
Tel: +1 (514) 337-0946  
Fax: +1 (514) 337-0857  
Mobile Canada: +1 (514) 578-0946  
Email: hk@canadextrading.com  
www.canadextrading.com

**North America**

**CANADA**  
Jolar-Speck Inc.  
2154 rue De La Province  
Longueuil, Quebec, Canada J4G 1R7  
Tel: (450) 674-5515 (800)565-6527  
Email: caroline.joanisse@jolarspeck.com  
Website: www.jolarspeck.com  
Contact: Caroline Joanisse

**Oceania**

**Australia**  
M Distribution Pty Ltd  
PO Box 444  
Mudgeeraba QLD  
Australia 4213  
P: +61 7 5522 1950  
E: Sales@metrointeractive.net.au  
W: http://metrointeractive.net.au/

**Asia**

**Japan**  
Big Fish Story, Inc.  
#404, 2-22, Jogabori-cho, Nishinomiya, Hyogo,  
662-0856, Japan  
www.bfinfo.com  
www.happycostume.com  
email: bigfish@bfinfo.com  
tel: +81-798-31-7831  
contact: Masashi Shibata

**Singapore, Indonesia, Malaysia**  
U4RIA - FEMME FATALE  
220 Orchard Road  
Midpoint Orchard #02-11A  
Singapore 238 852  
M: (+65) 8228 9339 T: (+65) 6738 7198  
W: u4ria.com.sg | femmefatale.com.sg

**Saudia Arabia, Turkey, Bahrain, Kuwait, Qatar, U.A.E., Palestine, Oman, Jordan, Lebanon, Syria ,Israel, Iraq, Iran, Africa, Yemen**  
Canadex International Trading  
Hrant (Harry) Kaprielian  
5255 Henri Bourassa West, Suite: 200  
St Laurent, Quebec, Canada. H4R 2M6  
Tel: +1 (514) 337-0946  
Fax: +1 (514) 337-0857  
Mobile Canada: +1 (514) 578-0946  
Email: hk@canadextrading.com  
www.canadextrading.com

**Europe**

**Germany, Austria, Czech Rep., Slovenia, Switzerland, Romania, Netherlands, Italy, Poland**  
Premium Bodywear AG  
Chemnitz Str. 36-38  
09228 Chemnitz/Germany  
dreamgirl@prebo.de  
P +49/37200/860 608  
F +49/37200/860 699  
Contact: Kathleen Richter

**United Kingdom, Ireland**  
New Temptations Ltd  
Address: Central House  
2-4 Wellington Grove  
Stockport  
Cheshire  
UK  
SK2-6RH  
Email: sales@newtemptations.co.uk  
Tel: +44 (0)161 480 6204  
Website: www.newtemptations.co.uk  
Contact: Faye Simcock

**Denmark, Sweden, Finland, Norway**  
Flirt Fashion AB  
Drottninggatan 110  
11360 Stockholm  
Sweden  
info@flirtfashion.se  
ph +468326550  
Contact: Wiggo Berggren

**Europe**

**France, Belgium, Luxembourg, Malta, DOMTOM**  
CL DIFFUSION  
ZA FORET CHATENAY  
37210 ROCHECORBON – France  
Tel : 0033 247 52 83 56  
Website : www.commande-sexy.com  
Contact : Margot HERMAN

**Greece, Cyprus**  
ANACO GROUP – A.ANAGNOSTOU & SIA OE  
a) CENTRAL OFFICES & WAREHOUSE :  
459 STR. KORINTHOU  
PATRAS – GREECE  
Tel: 0030 2610361610, FAX:  
0030328688, Email: anaco@otenet.gr  
b) SHOWROOM & OFFICE :  
6 STR, SEMITELOU  
ATHENS – GREECE  
Tel & fax : 0030 210 7470333  
www.anacogroup.gr  
Contact: Elena Anagnostou

**All European countries**  
Shots B.V.  
Veesteeg 12, 6658 KP Beneden-Leeuwen, the Netherlands  
maura@shots.nl  
+31 (0) 487 519 333  
Maura Claes  
www.shots.nl



## Costume Collection Guide



Dreamgirl 2021 Costume/Wig Catalog  
9.5" x 12", 24.13 cm X 30.48 cm  
172 pages  
Style: 2021-3



# Costume Collection Guide

STYLE	DESCRIPTION	SIZE	PAGE
0072	Basic Unitard	S/M, M/L	112
0072X	Basic Unitard	1X/2X, 3X/4X	112
0215H	Fishnet Raw Top Stockings	One Size	117
0217H	Sheer Pantyhose With Garters	One Size	117
0220H	Lace-Up Boot Pantyhose	One Size	117
4575	Roxie Hot Short - Black	S/M, M/L	111
4575X	Roxie Hot Short - Black	1X/2X, 3X/4X	111
5084	Hot Scottie	M, L, XL, XXL	39
5218	Luna Glove - Black, White	One Size	115
5236	Mile High Pilot Hugh Jorgan	M, L, XL, XXL	22, 84
6469	Grand Slam	S, M, L, XL	76
6469X	Grand Slam	1X/2X, 3X/4X	96
7030	Sheer Thigh Highs - Black, White	One Size	118
7030X	Sheer Thigh Highs - Black, White	O/S Queen	118
7031	Sheer Thigh Highs w/Back Seam - Blk, Red, Wht	One Size	118
7034	Fishnet Pantyhose	One Size	117
7819	Dominique Glove	One Size	115
8105	Zoot Suit Riot	M, L, XL, XXL	44
8158	Go Go Gorgeous	S, M, L, XL	50
8190	Gangsta	M, L, XL, XXL	11, 44
8355	All Tied Up Top - Black, White	S/M, M/L	113
8358	Pretty n' Peasant - Black, Red, White	S/M, M/L	113
8816	Dirty Cop Officer Anita Bribe	S, M, L, XL	23, 81
8817	Dirty Cop Officer Ed Banger	M, L, XL, XXL	23, 81
8860	He's A God	M, L, XL, XXL	54
8870	Santa Baby	S, M, L, XL	86
8909	Blue Gingham Dress	S, M, L, XL	109
8910	Cave Girl	S, M, L, XL	109
8912	Flapper - Black	S, M, L, XL	109
A8922	R.eally N.aughty Nurse	S, M, L, XL	83
8947	Ho Garden Top - White	S/M, M/L	113
9419	Prep School	S, M, L, XL	76
9452	Fairy-licious	S, M, L, XL	19, 60
9468	Disco Dude	M, L, XL, XXL	12, 49
9469	Disco Doll	S, M, L, XL	12, 49
9477	Little Red	S, M, L, XL	18, 58
9477X	Little Red	1X/2X, 3X/4X	92
9493	Big Bad Wolf (Men's)	M, L, XL, XXL	18, 58
9515	Shimmer Rhinestone Headpiece - Gld/Crystal, Gld/Blk	One Size	107
9516	Dripping Rubies Headpiece	One Size	107
9520	Glittering Rhinestone Headpiece	One Size	107
9523	Shimmering Gold Coin Crown	One Size	107
9558	Liquid Unitard - Black	S/M, M/L	112
9605	Men's Disco Pant - Black	M, L, XL, XXL	111
9838	Good Time Charlie	M, L, XL, XXL	43
9848	Fancy Girl	S, M, L, XL	76
9893	King Of Egypt	M, L, XL, XXL	9, 37
9959	Cat Fight	S, M, L, XL	71
9969	Gauntlet Gloves - Silver	One Size	114
9970	Galaxy Glasses - Silver	One Size	114
9971	Galaxy Gun	One Size	114
A9981	S.W.A.T. Police	S, M, L, XL	82
A9981X	S.W.A.T. Police	1X/2X, 3X/4X	96
10003	Day of the Dead Headpiece	One Size	105
10210	Downton Doll	S, M, L, XL	43
10210X	Downton Doll	1X/2X, 3X/4X	94
10240	Lieutenant Ivana Misbehave	S, M, L, XL	82
10260	Bloody Handsome	M, L, XL, XXL	14, 28
10284	All Aboard	S, M, L, XL	83
10284X	All Aboard	1X/2X, 3X/4X	97

STYLE	DESCRIPTION	SIZE	PAGE
10290	Exquisite Cleopatra	S, M, L, XL	38
10290X	Exquisite Cleopatra	1X/2X, 3X/4X	92
10297	Hatter Madness (Men's)	M, L, XL, XXL	19, 59
10298	The Sultan	M, L, XL, XXL	60
10315	World Champion (Women's)	S, M, L, XL	22, 77
10321	Harlequin Blaster	S, M, L, XL	71
10322	World Champion (Men's)	M, L, XL, XXL	22, 77
10329	Pharaoh Headpiece	One Size	106
10341	Midnight Madness Gloves	One Size	115
10342	Bow Top Stockings - White, Black	One Size	116
10624	Dalmatian Darling	S, M, L, XL	7, 64
10639	Frightfully Beautiful	S, M, L, XL	15, 30
10639X	Frightfully Beautiful	1X, 2X, 3X	90
10640	Mr. Fright	M, L, XL, XXL	15, 30
10641	Friday	S, M, L, XL	15, 30
10649	White Rabbit	M, L, XL, XXL	59
10654	Ramses	M, L, XL, XXL	38
10655	Start Your Engines	S, M, L, XL	21, 74
10663	Wicked, Wicked Witch	S, M, L, XL	28
10669	Gypsy	S, M, L, XL	39
10669X	Gypsy	1X, 2X, 3X	92
10671	Dalmatian Diva	S, M, L, XL	7, 71
10671X	Dalmatian Diva	1X, 2X, 3X	92
10680	Lady of the Dead	S, M, L, XL	28
10680X	Lady of the Dead	1X, 2X, 3X	90
10685	Flight Captain	S, M, L, XL	22, 84
10685X	Flight Captain	1X, 2X, 3X	97
10700	Swanky Flapper	S, M, L, XL	43
10700X	Swanky Flapper	1X, 2X, 3X	94
10719	Officer Pat U. Down	S, M, L, XL	82
10719X	Officer Pat U. Down	1X, 2X, 3X	96
10799	Pirate Hat (Women's)	One Size	106
10830	Evilicious Bodysuit	S/M, M/L	99
10831	Sheer Tie Front Skirt - Black	S/M, M/L	103
11106	Disco Diva	S, M, L, XL	49
11106X	Disco Diva	1X, 2X, 3X	93
11122	Hair Band (Men's)	M, L, XL, XXL	13, 51
11123	Hair Band (Women's)	S, M, L, XL	13, 51
11130	The Lion Tamer	S, M, L, XL	6, 7, 66
11131	King Of The Jungle	M, L, XL, XXL	7, 64
11134	Saloon Gal	S, M, L, XL	39
11134X	Saloon Gal	1X, 2X, 3X	93
11139	Clubbin Cutie	S, M, L, XL	39
11149	The Sorceress	S, M, L, XL	55
11149X	The Sorceress	1X, 2X, 3X	90
11156	Scarecrow	S, M, L, XL	60
11159	Caesar	M, L, XL, XXL	38
11161	Magic Cat	S, M, L, XL	59
11162	Raving Mad	S, M, L, XL	19, 59
11171	Hippie Hottie	S, M, L, XL	13, 50
11171X	Hippie Hottie	1X, 2X, 3X	93
11172	Hippie Dude	M, L, XL, XXL	13, 50
11179	Bare Bones Babe	XS, S, M, L, XL	28
11180	Angel of Darkness	S, M, L, XL	55
11182	Big Bad Wolf (Women's)	XS, S, M, L, XL	18, 58
11191	Iridescent Sparkly Skirt	S/M, M/L	114
11192	Lace Cape - Black	One Size	102
11194	Gothic Headpiece	One Size	105
11199	Unicorn Headpiece	One Size	114
11545	Miss Ritz	S, M, L, XL	42



# Costume Collection Guide

STYLE	DESCRIPTION	SIZE	PAGE
11545X	Miss Ritz	1X, 2X, 3X	94
11551	Vamp Cape	One Size	102
11555	70's Icon (Women's)	S, M, L, XL	12, 48
11556	70's Icon (Men's)	M, L, XL, XXL	12, 48
11565	Queen Cleo	XS, S, M, L, XL	9, 37
11570	Fighter Pilot	S, M, L, XL	83
11581	Tackle!	S, M, L, XL	76
11581X	Tackle!	1X, 2X, 3X	96
11584	Samurai (Women's)	S, M, L, XL	17, 33
11585	Samurai (Men's)	M, L, XL, XXL	17, 33
11593	King of Thrones	M, L, XL, XXL	17, 33
11625	Ms. Claus	XS, S, M, L, XL	86
11627	Mischief In Neverland	XS, S, M, L, XL	19, 60
11639	Keep It Clean	S, M, L, XL	83
11639X	Keep It Clean	1X, 2X, 3X	97
11649	Dancing Queen Pants	S/M, M/L	111
11651	Mythical Ram's Horn Headpiece	One Size	99
11656	Cleopatra Headpiece	One Size	106
11659	Spider Headpiece	One Size	104
11921	Gatsby	M, L, XL, XXL	10, 42
11922	Bada-Boom!	M, L, XL, XXL	11, 44
11923	Mummy Dearest	S, M, L, XL	29
11925	Apollo	M, L, XL, XXL	9, 54
11926	Venus	S, M, L, XL	9, 54
11928	Femme Fatale	S, M, L, XL	71
11930	Ninja (Women's)	S, M, L, XL	16, 32
11931	Ninja (Men's)	M, L, XL, XXL	16, 32
11934	Madame Skeleton	S, M, L, XL	29
11938	Roxy's Revenge	S, M, L, XL	11, 42
11938X	Roxy's Revenge	1X, 2X, 3X	94
11939	Prince of Darkness	M, L, XL, XXL	15, 29
11940	Princess of Darkness	S, M, L, XL	15, 29
11943	Big Bad Red	S, M, L, XL	57
11943X	Big Bad Red	1X, 2X, 3X	90
11949	Bada-Bing!	S, M, L, XL	11, 44
11950	Wicked Witch Hat	One Size	104
11951	Special Ops (Women's)	S, M, L, XL	23, 81
11952	Special Ops (Men's)	M, L, XL, XXL	23, 81
11954	Sun Goddess	S, M, L, XL	54
11962	Warrior Queen	S, M, L, XL	17, 33
11963	Ships Ahoy	S, M, L, XL	57
11963X	Ships Ahoy	1X, 2X, 3X	97

STYLE	DESCRIPTION	SIZE	PAGE
11969	Groovy Baby	S, M, L, XL	50
11970	Disco Babe	S, M, L, XL	48
11970X	Disco Babe	1X, 2X, 3X	93
11973	Pentagram Dress	S, M, L, XL	100
11975	Santa's Helper	S, M, L, XL	86
11977	Flapper Headpiece	One Size	106
11979	Glow-In-The-Dark Skeleton Dress	S, M, L, XL	102
11982	Black Veil Headpiece	One Size	105
11983	Lacy Gloves - Black	One Size	115
12211	Halloween Bodysuit	S/M, M/L	103
11996	Love Me Tender	S, M, L, XL	4, 67
11998	Vava Voom!	S, M, L, XL	10, 41
11999	Queen Of Rock	S, M, L, XL	4, 67
12000	Crazy For You	M, L, XL, XXL	70
12001	90'S Rap	M, L, XL, XXL	68
12002	Tiger-Luscious	M, L, XL, XXL	5, 69
12010	The Ringmaster	M, L, XL, XXL	6, 66
12011	Start Your Engines (Men's)	M, L, XL, XXL	21, 74
12012	Julius Caesar	M, L, XL, XXL	8, 36
12013	Say Cheese!	S, M, L, XL	20, 62
12014	Black Cat	S, M, L, XL	20, 62
12014X	Black Cat	1X, 2X, 3X	95
12016	80'S Party	S, M, L, XL	46
12017	Cheer Team USA	S, M, L, XL	75
12018	Boo-Tiful Witch	S, M, L, XL	26
12018X	Boo-Tiful Witch	1X, 2X, 3X	88
12019	Tigress	S, M, L, XL	63
12020	Tiger Babe	S, M, L, XL	5, 69
12059	Horn & Skull Headpiece	O/S	100
12271	Vampira	S, M, L, XL	14, 25
12271X	Vampira	1X, 2X, 3X	88
12272	My Hero	M, L, XL, XXL	80
12278	60's Daisy Dress	S, M, L, XL	108
12279	Men's Harem Pants	M, L, XL, XXL	110
12280	Witch Poncho	One Size	101
12281	Hell Yeah Poncho	One Size	101
12282	Miss Enchantment	S, M, L, XL	27
12282X	Miss Enchantment	1X, 2X, 3X	88
12283	Queen Cleopatra	S, M, L, XL	8, 36
12283X	Queen Cleopatra	1X, 2X, 3X	91
12284	Disco Fox	S, M, L, XL	47
12285	Skeleton Gloves & Leggings Kit	S, M, L, XL	99



This symbol represents items available in Plus Sizes.



This symbol represents convertible costumes that feature removable sections.



This symbol represents costumes with light up features.



This symbol represents items costumes which can be worn multiple different ways.





*Dreamgirl*

The images and graphics in this catalogue [or CD]  
are the copyright-protected work of Dreamgirl  
Brands. Any use or reproduction without the express  
written consent of Dreamgirl Brands is strictly  
prohibited. Violators will be prosecuted to the fullest  
extent of the law.

COPYRIGHT © MMXX

Styles 10260, 12271 and 12318





This Concludes the  
2021 Costume Collection.

Please turn this catalog  
over for the new  
2021

