

正規販売代理店

**Lady Cat**

by Cat Fish Club

<http://www.ladycat.com>

[service@ladycat.com](mailto:service@ladycat.com)

TEL 0798-31-7830

*Dreamgirl*<sup>®</sup>

Fall • Holiday • Valentine's Collection

2019/2020





STYLES 11760, 11025, 11456, 11743, 11624, 11786, 11757, 11224, 11787, 11606



STYLE 11740



**STYLE 11740X** ROSE GOLD  
1X, 2X, 3X



**STYLE 11740** ROSE GOLD  
S, M, L, XL



- Eyelash lace and gold sparkle metallic mesh babydoll
- Underwire cups
- Adjustable shoulder straps
- Adjustable hook & eye back closure
- Matching lace and mesh thong included



**STYLE 11741** ROSE GOLD

S, M, L, XL

• Eyelash lace and gold sparkle metallic mesh camisole and tap panty set • Halter neckline with adjustable T-back strap • Matching high-waisted tap panty with elastic waist and small ruffle detail





STYLES 10980, 10979



**STYLE 10979** MOCHA

XS, S, M, L, XL



- Sheer stretch mesh chemise
- Plunge front mesh panel
- Geometric sequin and embroidery details
- Adjustable criss-cross strapping
- Low back
- G-string not included



**STYLE 10980** MOCHA

XS, S, M, L, XL



- Sheer stretch mesh teddy
- Plunge front mesh panel
- Geometric sequin and embroidery details
- Sheer stretch mesh back
- Snap crotch closure





**STYLE 10980** BUFF

XS, S, M, L, XL



- Sheer stretch mesh teddy
- Plunge front mesh panel
- Geometric sequin and embroidery details
- Sheer stretch mesh back
- Snap crotch closure
- G-string not included



**STYLE 10979** BUFF

XS, S, M, L, XL



- Sheer stretch mesh chemise
- Plunge front mesh panel
- Geometric sequin and embroidery details
- Adjustable criss-cross strapping
- Low back
- G-string not included



STYLE 11280



**STYLE 11280** BLACK

XS, S, M, L, XL

- Stretch velvet teddy with eyelash lace at neckline and hips
- Satin adjustable straps
- Satin lace-up back
- Snap crotch closure





**STYLE 11746** BLACK

S, M, L, XL

- Stretch velvet chemise • Eyelash lace neckline and hem • Satin lace-up back details • Adjustable criss-cross straps



**STYLE 11746X** BLACK

1X, 2X, 3X

- Stretch velvet chemise • Eyelash lace neckline and hem • Adjustable criss-cross straps





**STYLE 11736X** METALLIC BLACK

1X, 2X, 3X



**STYLE 11736** METALLIC BLACK

S, M, L, XL



- Metallic printed stretch lace garter slip with seaming details
- Underwire cups
- Adjustable shoulder straps
- Elastic criss-cross back detail
- Removable/adjustable garters
- Shown with style 0007 thigh highs; sold separately
- Matching G-string included



STYLE 11744



**STYLE 11745** BLACK/GARNET

XS, S, M, L, XL



- Collared, sequined Venice lace underwire bra • Molded cups • Contrast liner • Decorative lace and velvet strapping • Adjustable straps • Back hook closure • Matching sequined Venice lace and sheer stretch mesh panty included

**STYLE 11744** BLACK/GARNET

S, M, L, XL



- Collared teddy • Underwire, molded cups • Sequined Venice lace bra and front panel • Contrast liner • Sheer stretch mesh back and sides • Stretch velvet adjustable straps • Venice lace and velvet collar • Snap crotch closure



STYLE 11747





**STYLE 11747** BLACK

S, M, L, XL

• Stretch velvet and sheer stretch mesh teddy • Underwire and molded cup bra • Velvet criss-cross details • Velvet and rhinestone collar and straps • Adjustable straps • Back neck closure • Thong back • Snap crotch closure





STYLE 11738



**STYLE 11738** PLUM

XS, S, M, L, XL

- Venice embroidery and stretch velvet teddy
- Teddy is versatile and can be worn with the embroidery in the front or in the back
- Adjustable lace-up detail
- Thong back with snap crotch closure





**STYLE 11748** PLUM

S, M, L, XL

- Stretch velvet cowl neck chemise • Low back • Satin criss-cross adjustable straps





**STYLE 11020X** PLUM, RUBY

1X, 2X, 3X



• Stretch mesh and lace babydoll • Underwire cups • Stretch satin with lace overlay detail • Matching G-string included • Plus has been modified by removing the push-up cup

**STYLE 11020** PLUM, RUBY

S, M, L, XL



• Stretch mesh and lace babydoll • Underwire push-up cups • Stretch satin with lace overlay detail • Matching G-string included



STYLE 11739



**STYLE 11739X** EVERGREEN

1X, 2X, 3X



• Eyelash lace and stretch velvet teddy • V-wire neckline detail • Open back with lace detail • Thong back with snap crotch closure • Plus size has been modified with an elastic underbust seam, hidden adjustable shoulder straps and higher back for better coverage and added support



**STYLE 11739** EVERGREEN

XS, S, M, L, XL



• Eyelash lace and stretch velvet teddy • V-wire neckline detail • Low, open back with lace detail • Thong back with snap crotch closure



STYLE 11775





**STYLE 11775** BLACK/GREEN

S, M, L, XL

- Metallic, gold corded lace and stretch mesh chemise
- Underwire cups
- Adjustable shoulder straps
- Adjustable hook & eye back closure
- Matching mesh G-string included





STYLE 11742



**STYLE 11743** NUDE/RUBY

S, M, L, XL



- Sheer stretch mesh with embroidered roses unlined, underwire, high neck, scalloped, open front bralette
- Adjustable strappy back details
- Strappy, open back panty with embroidered front panel



**STYLE 11742** NUDE/RUBY

S, M, L, XL



- Sheer stretch mesh with embroidered roses, high neck bustier with unlined, scalloped, plunge front bra
- Adjustable strappy back details
- Strappy, open back panty with embroidered front panel
- Shown with style 0007 thigh highs; sold separately



**STYLE 11456** LIPSTICK RED, BLACK  
S, M, L, XL



**STYLE 11456X** LIPSTICK RED, BLACK  
1X, 2X, 3X



• Underwire, garter babydoll • Beautiful Venice embroidery lace with satin detailing • Satin halter straps and bra back, both with adjustable hook & eye back closures • Babydoll has removable/adjustable garter straps attached to bottom of bra • Stretch mesh skirt • Matching Venice lace thong included • Shown with style 0007 thigh highs; sold separately



**STYLE 11624** LIPSTICK RED  
S, M, L, XL



• Silky microfiber and stretch galloon lace two-piece underwire shelf bra and G-string set • Adjustable straps • Back hook closure

**STYLE 11025** LIPSTICK RED  
XS, S, M, L, XL



• Eyelash lace halter teddy • High tie-neck closure • Low back  
• Eyelash lace framing • Snap crotch



STYLE 11733



**STYLE 11733** FUCHSIA

S, M, L, XL



• Venice embroidery and mesh babydoll with balconette cups • Hidden, inside underwire cup support • Stretch mesh skirt • Removable/adjustable shoulder straps • Adjustable hook & eye back closure • Matching Venice embroidery G-string included



**STYLE 11734** FUCHSIA

XS, S, M, L, XL



• Eyelash lace and fishnet garter slip • Underwire cups • Adjustable shoulder straps • Adjustable hook & eye back closure • Open back detail • Attached/adjustable garters • Matching G-string included • Shown with style 0007 thigh highs; sold separately



STYLE 11755





**STYLE 11755** BLACK

S, M, L, XL

- Pink and red heart embroidery and stretch mesh teddy
- Underwire cups
- Adjustable organza ribbon lace-up neckline detail
- Adjustable shoulder straps
- Adjustable hook & eye back closure
- Thong back with snap crotch closure





**STYLE 11754** BLACK

S, M, L, XL



**STYLE 11754X** BLACK

1X, 2X, 3X



• Pink and red heart embroidery and stretch mesh babydoll • Underwire cups • Adjustable organza ribbon lace-up neckline detail • Fly-away front with large ruffle detail • Adjustable shoulder straps • Adjustable hook & eye back closure • Matching embroidery G-string included



**STYLE 11759** FUCHSIA

S, M, L, XL

- Heart embroidered mesh chemise
- Silver heart detail
- Back neck hook closure with adjustable straps
- Matching G-string included





**STYLE 11760** LIPSTICK RED

S, M, L, XL



- Stretch galloon lace and stretch heart mesh ruched chemise
- Underwire unlined cups
- Lace detailed low back
- Adjustable straps
- Matching G-string included



**STYLE 11760X** LIPSTICK RED

1X, 2X, 3X





**STYLE 11757** LIPSTICK RED

XS, S, M, L, XL

- Stretch velvet teddy • Metal heart cup trim with shirring and cut-out details • Adjustable shoulder straps • Elastic strappy back detail
- Thong back with snap crotch closure





STYLE 11756



**STYLE 11756** BLACK

XS, S, M, L, XL

• Heart cut out faux-leather with hot pink lining teddy • Underwire cups • Removable/adjustable shoulder straps • Adjustable hook & eye back closure • Mesh back • Thong back with snap crotch closure





STYLE 11758, 11762





**STYLE 11758** BLACK

S, M, L, XL

- Delicate gold shimmer, spandex-jersey 2-piece pajama set
- Cropped top with scoop neckline with a low armhole
- Metal heart detail with shirring
- Matching high-waisted short with back heart detail





**STYLE 11762** BLACK/FUCHSIA

S, M, L, XL



• Heart print cotton/spandex jersey long-sleeved snap front Henley style short romper pajama • Rib knit cuffs and binding



**STYLE 11762X** BLACK/FUCHSIA

1X, 2X



• Heart print cotton/spandex jersey long-sleeved snap front Henley style short romper pajama • Rib knit cuffs and binding



**STYLE 11767** BLACK/FUCHSIA

M, L, XL



• Heart print cotton/spandex jersey boxer brief



**STYLE 11765** LIPSTICK RED

S, M, L, XL



- Santa themed sleepwear chemise
- Soft, spandex-jersey with faux-fur trims
- Racer-back style with attached hood
- "Sleigh My Name" screen-print
- Pom-pom ties detail



**STYLE 11763** LIPSTICK RED

S, M, L, XL



- Cotton/Spandex jersey hooded long sleeved, full length onesie
- Front keyhole
- Faux-fur trimmed hood and pom-poms



**STYLE 11764X** LIPSTICK RED

1X, 2X, 3X



**STYLE 11764** LIPSTICK RED

XS, S, M, L, XL



- Santa themed 3-piece set • Stretch velvet teddy • Underwire cups with faux-fur trim • Removable/adjustable shoulder straps • Hook & eye back closure • Thong back with snap crotch closure • Matching mesh skirt with faux-fur trim • Tie on ribbon closure; skirt can be worn with the bow in the front or the back • Matching velvet and faux-fur Santa hat • Plus size does not have removable shoulder straps

*Dreamgirl*  
MOST LOVED  

---

**HANGING**



STYLE 11469

Style 9703X shown with 11495X Robe



Style 9703 shown with 11495 Robe

**STYLE 11495** RED/BLACK



S, M, L, XL

- Soft, spandex-jersey robe
- Lace trim details • Self-belt included

**STYLE 9703** RED/BLACK



S, M, L, XL

- Soft spandex-jersey chemise • Lace inset details on neckline and back

**STYLE 11495X** RED/BLACK

1X, 2X, 3X



- Soft, spandex-jersey robe • Lace trim details • Self-belt included

**STYLE 9703X** RED/BLACK

1X, 2X, 3X



- Soft spandex-jersey chemise
- Lace inset details • Plus has been modified with a higher back for more coverage



Style 11495



Style 9703

**STYLE 3863** BLACK

S, M, L, XL, XXL

- Men's charmeuse lounge pant • Drawstring waist





**STYLE 11071** BLACK



S, M, L, XL

- Soft, spandex-jersey pajama set • Camisole features scalloped lace edging • Functioning snap-front closure • Lace T-back strap
- Matching panty features functioning snap-side closures



**STYLE 11074** MAGENTA, BLACK



S, M, L, XL

- Soft spandex-jersey 2-piece set • Double layer triangle cup bralette
- Halter neckline • Lace back detail with adjustable T-back strap • Matching lace back panty included



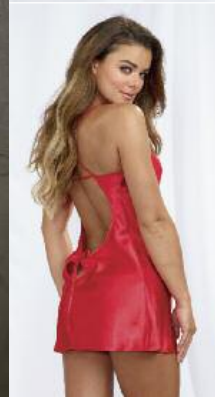
**STYLE 11073** BLACK, PLUM



S, M, L, XL

- Soft spandex-jersey bodysuit • Scoop neckline with racer back • Stretch lace details on hips & back • Thong back with snap crotch





**STYLE 3717X** RED, BLACK  
1X/2X, 3X/4X



**STYLE 3717** RED, BLACK  
S, M, L



- Women's charmeuse kimono robe • Attached belt • Includes matching chemise • Adjustable criss-cross straps • Low back
- Matching padded lingerie hanger included



**STYLE 8740X** BLACK  
1X/2X, 3X/4X



**STYLE 8740** BLACK  
S, M, L, XL



- Chiffon and stretch lace short kimono robe • 3/4 length sleeves • Attached chiffon sash • Matching stretch lace cheeky panty included



**STYLE 11020** RUBY, PLUM  
S, M, L, XL



- Stretch mesh and lace babydoll • Underwire push-up cups • Stretch satin with lace overlay detail • Matching G-string included
- Plus garment has been modified by removing the push-up cups



**STYLE 11020X** RUBY, PLUM  
1X, 2X, 3X



**STYLE 11462** RUBY  
S, M, L, XL



- Stretch lace underwire garter slip • Adjustable shoulder straps • Elastic criss-cross back detail • Removable/adjustable garters • Matching lace G-string included
- Shown with style 0005 thigh highs; sold separately



**STYLE 11462X** RUBY  
1X, 2X, 3X





**STYLE 10460** GARNET

S, M, L, XL

- Lace halter gown • Scalloped-edge trim • Plunging neckline • High side slit
- Low back • Satin waist detail • Adjustable tie-back closures • Matching G-string included



**STYLE 11469** RUBY

XS, S, M, L, XL

- Venice embroidery lace cropped bustier • Underwire lace cups
- Removable/adjustable shoulder straps • Elastic criss-cross back detail with adjustable hook & eye closures • Matching Venice embroidery lace skirt • Adjustable hook & eye back closure • G-string not included



**STYLE 11543** RUBY

S, M, L, XL

- Baby fishnet and galloon lace chemise • Fixed criss-cross lace-up front with back neck hook • Adjustable straps • Lace panty with criss-cross detail in back included





**STYLE 11012** DEEP PURPLE

32, 34, 36, 38



- Venice lace bustier with front lining • Support boning • Underwire, molded cups • Adjustable satin Euro straps • Removable/adjustable garters
- Stretch mesh back with zipper closure • Matching G-string included • Shown with style 0007 thigh highs; sold separately

**STYLE 11012X** DEEP PURPLE

40, 42, 44



**STYLE 11013** EGGPLANT

XS, S, M, L, XL,



- Stretch lace and baby fishnet garter slip • Underwire, molded cups • Strappy collar and details • Adjustable straps • Attached garters
- Cut-out back with hook and eye closure • Matching G-string included • Shown with style 0007 thigh highs; sold separately



**STYLE 11013X** EGGPLANT

1X, 2X, 3X





**STYLE 10998X** PLUM/BLACK

1X, 2X, 3X



- Mesh garter babydoll • Embroidery trims • Underwire Cups • Adjustable shoulder straps • Hook & eye back closure • Removable/adjustable garters attached to bra • Matching G-string • Shown with Style 0007 thigh highs; sold separately



**STYLE 10998** PLUM/BLACK

S, M, L, XL



**STYLE 11542** EGGPLANT

XS, S, M, L, XL



- Baby fishnet and stretch lace garter slip • Front opening with fixed criss-cross lace-up detail • Removable garters • Scalloped lace matching thong included • Shown with style 0007 thigh highs, sold separately



**STYLE 11002** PLUM/BLACK

S, M, L, XL



- Three-piece set • Contrast lace overlay detail • Hook and eye front closure • Fly-away-front mesh skirt • Adjustable shoulder straps • Matching garter belt • Attached/adjustable garters • Matching G-string included • Shown with style 0007 thigh highs; sold separately





**STYLE 10537** BLACK/RED, BLACK/VINTAGE ROSE  
XS, S, M, L, XL



**STYLE 10537X** BLACK/RED, BLACK/VINTAGE ROSE  
1X, 2X, 3X



- Strappy eyelash lace teddy • Contrast stretch satin lining in front • Underwire cups • Eyelash lace shoulder and collar detail • Collar with ribbon tie in back • Open back with bra hook closure • Snap crotch



**STYLE 11272** BLACK/VINTAGE ROSE  
S, M, L, XL



**STYLE 11007** RASPBERRY/BLACK  
XS, S, M, L, XL



- Eyelash lace underwire chemise • Stretch satin with lace overlay balconette cup • Hidden, inside underwire cup support • Adjustable shoulder straps • Adjustable hook & eye bra back closure • Adjustable ribbon lace-up back detail • Matching stretch satin thong included

- Unique 3 piece look lace satin teddy • Underwire cups • Attached garter belt and panties with removable garters • Hook and eye back closures • Shown with style 0005 thigh highs; sold separately



**STYLE 10996X** BLACK  
1X, 2X, 3X



**STYLE 10996** BLACK  
S, M, L, XL



- Two-piece set • Mosaic stretch lace teddy • Open G-string back • Adjustable criss-cross straps • Sheer mesh maxi skirt with tie-front closure
- Plus garment has been modified with a higher neckline and full lace back for additional coverage



**STYLE 10928** BLACK

32, 34, 36, 38



- Fully boned lace bustier • Underwire, molded cups • Point d'esprit side panels • Metal ring with velvet elastic trim • Hook and eye back closure • Matching thong included • Style 0007 thigh highs; sold separately



**STYLE 11448** BLACK

XS, S, M, L, XL



- Lace and Point d'esprit garter slip • Underwire-molded cups • Metal ring and wide velvet elastic collar and trim • Hook and eye back closure • Attached garters • G-string not included • Shown with style 0007 thigh highs, sold separately

**STYLE 11460** BLACK

S, M, L, XL



- Sheer mesh and scalloped lace full length gown • Plunge front • Plunge back with lace and stretch satin banding detail • Back slit • G-string included





**STYLE 11456X** BLACK, LIPSTICK RED  
1X, 2X, 3X



**STYLE 11456** BLACK, LIPSTICK RED  
S, M, L, XL



- Underwire, garter babydoll • Beautiful Venice embroidery lace with satin detailing • Satin halter straps and bra back, both with adjustable hook & eye back closures • Babydoll has removable/adjustable garter straps attached to bottom of bra • Stretch mesh skirt • Matching Venice lace thong included
- Shown with style 0007 thigh highs; sold separately



**STYLE 11458** BLACK  
XS, S, M, L, XL



- Stretch lace garter slip with architectural detailing • Underwire cups, with boning support • Removable/adjustable shoulder straps included • Adjustable hook & eye bra back closure • Attached/adjustable garters • Matching thong included
- Shown with style 0007 thigh highs; sold separately



**STYLE 11447** BLACK  
XS, S, M, L, XL



- Stretch lace, collared, bustier and garter skirt set • Underwire, unlined cups • Elastic strappy details • Adjustable straps • Hook and eye back closure • Garter skirt has strappy details and attached garters • G-string not included • Shown with style 0007 thigh highs; sold separately



**STYLE 11470** EGGPLANT

XS, S, M, L, XL



- Microfiber bodysuit • Underwire, molded push-up cups • Gunmetal color chainmail shoulder straps with adjustability in the back • Adjustable hook & eye bra back closure
- Thong back with snap crotch



**STYLE 11470X** EGGPLANT

1X, 2X, 3X



**STYLE 11452** BLACK

S, M, L, XL



- Stretch faux leather and patterned lace crop-top • Underwire, padded bra
- Collared neck • Open back with hook and eye closure • High waist skirt
- G-string not included



**STYLE 11455** BLACK

S, M, L, XL



- 3-piece set • Chiffon cocoon robe with faux-leather piping accent • Faux-leather bralette with keyhole detail • Adjustable shoulder straps • Adjustable hook & eye back closure • Matching faux-leather thong



**STYLE 10985** BLACK

XS, S, M, L, XL

- Faux-leather teddy with Venice lace collar and trim
- Underwire, molded cups
- Adjustable collar and straps
- Back hook closure
- Thong back with snap crotch closure



**STYLE 10984** BLACK

XS, S, M, L, XL

- Faux-leather garter slip with Venice lace collar and trim
- Underwire, molded cups
- Adjustable collar and straps
- Removable garters
- Shown with style 0007 thigh highs; sold separately



**STYLE 11454X** BLACK

1X, 2X, 3X

- Stretch, faux-leather halter bodysuit
- Stretch lace trim details
- Lace T-back
- Thong back with snap crotch
- Plus size has been modified with a higher back for more coverage



**STYLE 11454** BLACK

XS, S, M, L, XL





**STYLE 9386** BLACK, RED

32, 34, 36, 38



- Stretch lace, open-cup underwire shelf bra • Adjustable shoulder straps
- Hook and eye back closure • Shown with styles 8735 garter belt, 1376 thong and 0005 thigh highs; sold separately • Pasties not included



**STYLE 9386X** BLACK, RED

40, 42, 44



- Stretch lace, open-cup underwire shelf bra • Adjustable shoulder straps
- Hook and eye back closure • Shown with styles 8735X garter belt, 1376X thong and 0005X thigh highs; sold separately • Pasties not included



**STYLE 11539** BLACK

32, 34, 36, 38



- Stretch lace underwire bra with strappy detail • Adjustable shoulder straps
- Adjustable hook & eye bra back closure • Shown with style 1450 panty; sold separately

*Dreamgirl*

RED

diamond



STYLE 1178



**STYLE 11788** METALLIC BLACK  
O/S



**STYLE 11788X** METALLIC BLACK  
O/S QUEEN



- Metallic printed scalloped stretch lace teddy
- Plunging halter neckline
- Flutter mesh hip detail
- Adjustable ribbon tie-back closures
- Thong back with open crotch



**STYLE 11773X**

BLACK



O/S QUEEN

- Halter plunge front stretch lace teddy • Attached fly-a-way hi-lo skirt
- Rhinestone cross detail • Eyelash lace trim • Organza ribbon tie at back neck • G-string back



**STYLE 11773**

BLACK



O/S





STYLE 11777





STYLE 11777 BLACK

O/S

• Collared stretch lace bralette • Stretch rhinestone band and collar details • Adjustable straps • Adjustable back hook closure • Stretch lace panty with stretch rhinestone band side tabs and adjustable back included





STYLE 11789



STYLE 11789 BLACK

O/S



• Seamless sweater knit look teddy with long sleeves • Scoop neckline and thong back • Includes matching thigh high stockings



**STYLE 11246** BLACK

O/S



- Rhinestoned, fishnet 3-piece set • Halter bralette with tie-back neck closure
- High waisted thong • Matching thigh high stockings

**STYLE 11246** TOFFEE

O/S



- Rhinestoned, fishnet 3-piece set • Halter bralette with tie-back neck closure • High waisted thong • Matching thigh high stockings
- Looks beautiful on all skin tones! • The illusion of nakedness



STYLE 11246



**STYLE 11774** SPARKLING GRAPE

O/S



• Sparkle metallic mesh babydoll • Embroidery Venice trim detail • Adjustable shoulder straps • Matching mesh G-string • Venice embroidery choker included with adjustable hook & eye back closure



**STYLE 11774X** SPARKLING GRAPE

O/S QUEEN





**STYLE 11772** GARNET

O/S



- Halter neck lace teddy • Corded lace with metallic detail
- Underwire support with peek-a-book open cups • Ribbon neck-tie closure • Open back with elastic criss-cross detail • Thong back with snap crotch closure



**STYLE 11606** LIPSTICK RED

O/S



- Stretch mesh and lace bustier and G-string
- Adjustable criss-cross straps and back elastic
- Attached front garters
- Shown with style 0007 thigh-highs; sold separately



**STYLE 11224** LIPSTICK RED

O/S

- Satin bow, 2-piece set
- Halter bralette with open cups and adjustable wide satin bow closure
- Elastic back and halter neck-ties
- Matching open crotch V-string with adjustable satin bow closure and open back
- Pasties not included



**STYLE 0268** LIPSTICK RED

O/S

- Open-cup bodystocking with knitted lace "teddy" design
- Fishnet legs
- Open crotch
- Adjustable halter ties
- Pasties and G-string not included







STYLES 11780, 11778 and 11779



**STYLE 11779** "Ho Ho Hottie"

O/S



- Santa themed, panné stretch velvet teddy with marabou feather trims
- Halter neckline with attached hood
- Plunging neckline with adjustable ties with pom-pom details
- Attached/fixed front garters
- Adjustable tie-back closures
- Thong back
- Shown with style 0007, thigh highs; sold separately



**STYLE 11779X** "Ho Ho Hottie"

O/S QUEEN





**STYLE 11780** "Santa's Sweetie"

O/S



- Santa themed 4-piece set with faux-fur trims • Triangle bralette with tie back closures • Mini skirt with belt detail and attached/adjustable front garters & peek-a-boo open back • Matching G-string • Matching Santa's hat included • Shown with style 0007 thigh highs; sold separately



**STYLE 11778** LIPSTICK RED

O/S



- Stretch mesh gartered bustier • Faux fur trim • Attached ribbon belt with non-working buckle • Ties at back neck and back waist • Matching mesh and faux fur Santa hat and thong included



STYLE 11781



**STYLE 11781** BLACK/RED

O/S

• Heart Jacquard plunging stretch lace teddy • Side tie closures • Back neck tie





**STYLE 11786** LIPSTICK RED

O/S



**STYLE 11786X** LIPSTICK RED

O/S QUEEN



- Stretch lace and stretch mesh babydoll • Underwire cups
- Attached collar with Venice heart embroidery trim; tie-back closure • Adjustable shoulder straps • Adjustable hook & eye back closure
- Matching open crotch G-string with Venice heart embroidery trim included



**STYLE 11787** LIPSTICK RED

O/S

- Stretch scalloped lace and stretch heart mesh collared halter chemise
- Back neck tie
- Adjustable waist and back keyhole detail
- Matching G-string included





STYLES 11784





**STYLE 11784** HOT PINK

O/S



- Heart-patterned seamless teddy • Halter neckline with snap neck closure
- Thong back • Matching thigh high stockings included



**STYLE 11783** HOT PINK

O/S



- Stretch lace halter teddy • Attached lace collar with silver heart detail and adjustable neck-tie closure • Open back with silver heart detail • V-string back



STYLE 11782



**STYLE 11782X** BLACK  
O/S QUEEN



- Stretch faux leather teddy with adjustable straps
- Heart cut out and silver stud detail
- Stretch mesh back with keyhole and adjusters
- Adjustable faux leather heart ring collar included



**STYLE 11782** BLACK  
O/S



- Stretch faux leather strapless teddy
- Heart cut-out and silver stud detail
- Adjustable elastic strappy back
- Adjustable faux leather heart ring collar included





*Dreamgirl*  
MOST LOVED  

---

PACKAGED

STYLE 8694



**STYLE 11518** RUBY

O/S



**STYLE 11518X** RUBY

O/S QUEEN



• Stretch lace & stretch mesh garter slip • Adjustable shoulder straps • Attached/adjustable garters • Matching mesh G-string included • Shown with style 0007 thigh highs; sold separately



**STYLE 10561** LIPSTICK RED

O/S



**STYLE 10561X** LIPSTICK RED

O/S QUEEN



• Scalloped, stretch, galloon lace bustier • Underwire open cups • Adjustable shoulder straps • Strappy back detail • Attached/adjustable garters • Matching open-crotch G-string included • Shown with style 0005 thigh highs; sold separately • Plus has been modified with a mesh back for more coverage



**STYLE 8694** RED, BLACK

O/S



**STYLE 8694X** RED

O/S QUEEN



- Stretch lace halter teddy • Plunging neckline • Adjustable halter ties • Large heart cut-out detail on back • Plus size garment modified with higher neckline



**STYLE 1156** RASPBERRY

O/S



**STYLE 11560** RASPBERRY

O/S



- Stretch mesh and lace Peek-a-boo Cup Chemise • Elastic faux lace-up
- Adjustable straps • U-back with tie closure • G-string Included

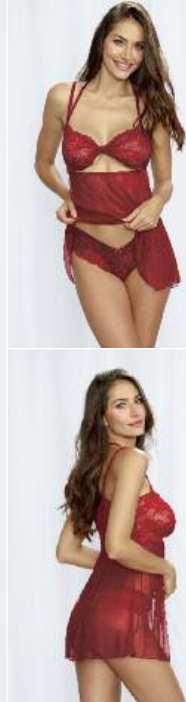
- 3-Piece set • Stretch galloon lace strappy bralette with adjustable straps
- Stretch mesh skirt with lace waistband • Matching G-string included



**STYLE 11033** RASPBERRY/BLACK

O/S

- Stretch mesh babydoll with cutout midsection • Contrast lace overlay
- Contrast elastic detailing • Adjustable shoulder & halter straps
- Matching G-string included



**STYLE 11032** GARNET

O/S

- Stretch lace and stretch mesh babydoll with scalloped lace • Neckline detail and adjustable halter & shoulder straps • Matching lace tanga panty included



**STYLE 10551** GARNET

O/S

- Stretch galloon lace teddy • Unlined triangle cups • Peek-a-boo cutouts
- Open crotch • Criss-cross adjustable straps • G-string back



**STYLE 10552** GARNET

O/S

- Two-piece, strappy garter play set • Unlined lace bra • Decorative rings
- Adjustable shoulder & back straps • Back hook closures • Attached/adjustable garters • Matching thong included • Shown with style 0007 thigh highs; sold separately





**STYLE 11517** PLUM

O/S



- Stretch mesh chemise with shirring details
- Halter neckline with adjustable T-back strap
- Front zipper detail
- Matching mesh G-string included



**STYLE 11517X** PLUM

O/S QUEEN



**STYLE 11511** SPARKLING GRAPE

O/S



- Stretch lace teddy
- Strappy elastic details
- Adjustable shoulder straps
- Open back with adjustable elastics straps
- G-string back

**STYLE 11511X** SPARKLING GRAPE

O/S QUEEN







**STYLE 11507** EGGPLANT

O/S

- Seamless fishnet 3-piece set • Strapless bandeau bralette • Garter skirt with attached/adjustable garters • Matching elbow length gloves • Shown with style 0007 thigh highs; sold separately • G-string not included



**STYLE 11028** EGGPLANT

O/S

- Stretch lace garter slip with unlined cups • Scalloped lace trim • Attached garters • Low, strappy T-back • Strappy neckline • Adjustable collar and ring detail • Shown with style 0007 thigh highs; sold separately • G-string not included



**STYLE 11503X** MIDNIGHT

O/S QUEEN

- Stretch lace & mesh babydoll • High-neck halter styling with tie-back neck closure • Matching strappy stretch lace panty



**STYLE 11503** MIDNIGHT

O/S





**STYLE 11034** BLACK

O/S



**STYLE 11034X** BLACK

O/S QUEEN



• Strappy, stretch galloon lace and mesh babydoll • High neckline • Unlined cups • Ring detail • Eyelash lace trim • Matching G-string included



**STYLE 11515** BLACK

O/S



**STYLE 11515X** BLACK

O/S QUEEN



• Baby fishnet and lace halter chemise • Tie neck and back closures • G-string included



**STYLE 11287** BLACK

O/S



- Seamless bodysuit with multi-patterned stripe details
- Cold-shoulder styling with long sleeves
- Halter neck with adjustable ties
- Thong back with snap crotch



**STYLE 11040** BLACK

O/S



- Seamless fishnet collared teddy
- Plunge-front halter neckline
- Tie-neck closure
- Lace trim
- G-string back
- Includes matching fishnet gloves with ribbon tie restraint



**STYLE 11509** BLACK

O/S



- Strappy Teddy with stretch galloon lace
- Adjustable straps and back
- Tie back collar
- Thong back



**STYLE 10593** BLACK

O/S



- Sheer mesh Grecian-style gown
- Floor-length hem
- Plunging neckline
- Allover shirring
- Cut-out sides
- Open back with criss-cross strap details
- Versatile front panel can be worn loose or as an extra wrap
- Matching G-string included



**STYLE 10983** BLACK

S/M, M/L



- Stretch lace leg garter that functions as a wallet • 2 secret pockets
- Pockets can fit a credit card & a large phone



**STYLE 9382** BLACK

O/S, O/S QUEEN



- Zig-zag topstitch detailing • Stretch mesh back • Adjustable garter straps
- Hook & eye back closure • Shown with style 0006 thigh highs, sold separately • G-string



**STYLE 8735** BLACK, RED

O/S, O/S QUEEN



- Stretch lace garter belt • Scalloped hem • Hook & eye back closure
- Shown with Styles 1376 thong and 0005 thigh highs; sold separately





**STYLE 1452** BLACK

S, M, L, XL

- Microfiber G-string • Gunmetal color chainmail hip strap detail
- Adjustable back waist elastic



**STYLE 1449** BLACK

S/M, L/XL

- Fishnet G-string • Wide elastic waistband



**STYLE 1450** BLACK

S/M, L/XL

- Stretch lace panty • Open sides with elastic straps



**STYLE 1423** BLACK

S, M, L, XL

- Faux-leather, stretch knit cheeky panty • Functional zipper front
- Stretch mesh back • Ruching detail





**STYLE 1435** BLACK, SLATE

S, M, L, XL

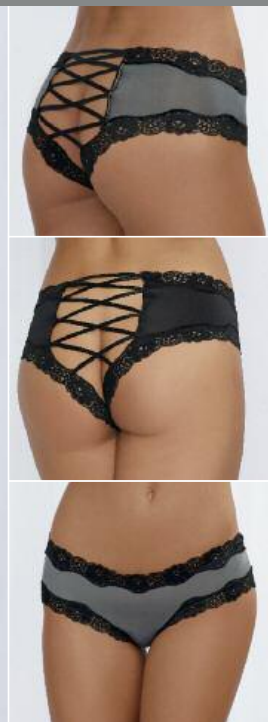
- Stretch lace panty with elastic criss-cross details



**STYLE 1424** BLACK

S, M, L, XL

- Scalloped cross-dye lace and stretch mesh panty • Strappy elastic back detail



**STYLE 1412** BLACK

S/M, M/L

- Stretch lace tanga panty • Criss-cross strappy waistband detail



**STYLE 1434** BLACK, HOT PINK/BLACK, SLATE/BLACK

S, M, L, XL, 1X, 2X, 3X

- Microfiber cheeky panty • Stretch lace trim
- Elastic criss-cross open back detail





**STYLE 1326** BLACK

S, M, L, 1X/2X, 3X/4X

- Stretch lace, open-crotch boyshort
- Lace-up back detail



**STYLE 1380** RED/BLACK

S, M, L, XL

- Microfiber cheeky panty
- Cross-dye lace back
- Satin bow trim



**STYLE 1376** BLACK, RED

O/S

- Stretch lace thong with stretch lace waistband



**STYLE 1377** HOT PINK/BLACK, RED/BLACK

S, M, L, XL, \*1X/2X, 3X/4X \*HOT PINK/BLACK ONLY

- Stretch mesh panty
- Lace ruffle trim
- Open-back heart detail





**STYLE 1300** BLACK, HOT PINK, RED

S, M, L, 1X/2X, 3X/4X



- Stretch lace, low-rise panty • Open crotch • Ruffled back detail



**STYLE 1375** BLACK, HOT PINK, RED

S, M, L, XL



- Stretch lace, cheeky hipster panty • Scalloped • Stretch mesh lace trim • Satin bow

**STYLE 7177** BLACK, HOT PINK, RUBY, SAPPHIRE, VINTAGE PINK

S, M, L, 1X/2X, 3X/4X



- Delicate lace open-front gown • Scalloped lace trim • Long sleeves • Ribbon tie-front closure • Matching lace G-string included





**STYLE 0005** BLACK, NUDE, RED, WHITE  
O/S, O/S QUEEN



- Sheer thigh highs with stay-up silicone lace top
- Shown with Style 1376 thong; sold separately

**STYLE 0007** BLACK, NUDE, RED, WHITE  
O/S, O/S QUEEN



- Sheer thigh highs with back seam • Shown with Style 9382 garter belt; sold separately • G-string not included



**STYLE 0002** BLACK, WHITE  
O/S, O/S QUEEN



- Sheer thigh highs with lace top • Shown with Style 9382 garter belt; sold separately • G-string not included

**STYLE 0006** BLACK, RED  
O/S, O/S QUEEN



- Fishnet thigh highs with lace top • Shown with Style 9382 garter belt; sold separately • G-string not included



**STYLE 0005N** NEON PINK

O/S, O/S QUEEN

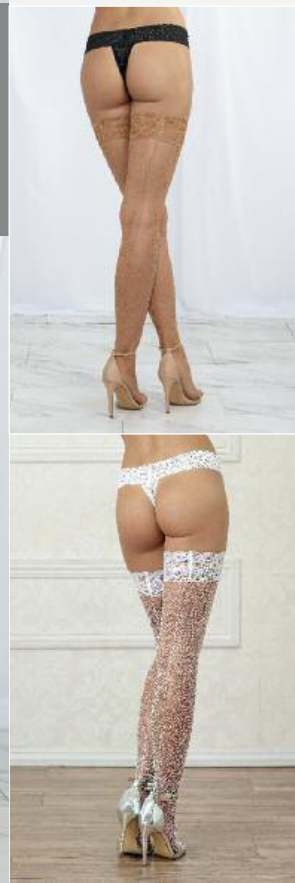
- Sheer thigh highs
- Stay-up silicone lace top
- Shown with Style 7177 panty; sold separately



**STYLE 0001N** NEON PINK

O/S, O/S QUEEN

- Neon fishnet thigh highs with back seam
- Stay-up silicone lace top
- Shown with Style 7177 thong; sold separately



**STYLE 0001** BLACK, NUDE, WHITE

O/S, O/S QUEEN

- Fishnet thigh highs with back seam
- Stay-up silicone lace top
- Shown with Style 1376 thong; sold separately





STYLE 11788

*je t'adore Paris*

*Dreamgirl*

The images and graphics in this catalogue [or CD] are the copyright-protected work of DG Brands International. Any use or reproduction without the express written consent of DG Brands is strictly prohibited. Violators will be prosecuted to the fullest extent of the law. COPYRIGHT © MMXVIII

