

取扱店 **ハッピーコスチューム**
by Cat Fish Club

<http://www.happycostume.com>

sales@happycostume.com

TEL 0798-31-7830

Q
♥



Dreamgirl®

— 2019 COSTUME COLLECTION —

Dreamgirl[®] Couples

Styles 11585, 11584





Style 11585

"Samurai"
(Men's)

M, L, XL, XXL

Prepare for battle in this fierce tunic, matching belt with Samurai patch, head piece and wrist gauntlets.
(Pants and sword not included.)
(Four-Piece Set)

(Shown With)
Style 6379
"Men's Basic Pant"
Black, White
M, L, XL, XXL

Style 11584

"Samurai"
(Women's)

S, M, L, XL

Dress to kill in this sleek black jumpsuit with lace up neckline detail and Samurai belt with attached skirt. Also includes headpiece and wrist gauntlets.
(Sword not included.)
(Four-Piece Set)





Style 11565

"Queen Cleo"

XS, S, M, L, XL

This exquisite costume includes an Egyptian print bodysuit with snap-crotch and chiffon skirt with Egyptian Ankh symbol. Also includes a rhinestone embellished headpiece with cobra.
(Scepter and wig not included.)
(Three-Piece Set)

(Shown With)
Egyptian Queen Wig
Style 10832
Black
O/S

Style 9893

"King of Egypt"

M, L, XL, XXL

This versatile costume can be worn with or without the included shirt. Includes Egyptian collar with attached gold cape, wrist gauntlets, Royal Nemes headpiece, Eye of Horus Necklace and Egyptian Shendyt skirt with embellished waistband.
(Six-Piece Set)



Style 11159

"Caesar"

M, L, XL, XXL

Regal long tunic and draped red satin toga with gold leaf printed design and trim. Includes wrist gauntlets and gold leaf head piece.
(Four-Piece Set)

Style 11588

"Cleopatra"

S, M, L, XL

This stunning Cleopatra costume includes a shimmering sequin gown with slit, jeweled Egyptian collar with attached cape, and rhinestone embellished belt. (Headpiece, wig and scepter not included.) (Three-Piece Set)
(Shown With) "Egyptian Queen Wig"
Style 10832 Black
O/S and "Cleopatra Headpiece"
Style 11656
O/S

Style 11593

"King of Thrones"

M, L, XL, XXL

Be ready to slay a dragon in this gallant costume, which includes a faux leather tunic top and full velvet cape with oversized fur collar. Also includes a medieval styled belt with velcro back closure. (Sword and pants not included.) (Three-Piece Set)

Style 11552

"Dragon Beauty"

S, M, L, XL

Beautiful white reptile embossed velvet gown with flowing sheer chiffon sleeves, has side slits and a dragon applique. (Wig sold separately.) (One-Piece Set)

(Shown With)
Style 11391

"Long Wavy Wig with Back Twist"
White
Adjustable

Style 11563

"Magic Dragon"

S, M, L, XL
1X, 2X, 3X



Darling dragon costume includes a reptile printed dress with sheer webbed sleeves. Also includes long dragon headpiece with attached tail. (Wig not included.) (Two-Piece Set)

(Shown With)
Style 11352

"Long Wavy Ombre Wig"
Black/Lavender
Adjustable

Style 11138

"Cave Man"

M, L, XL, XXL

Animal-printed stretch velour top with jagged hem and faux-suede pants with jagged hem. Includes head wrap, arm band and necklace. (Five-Piece Set)
(Inflatable club not included)

Style 11139

"Clubbin' Cutie"

S, M, L, XL

Pre-historic chic, animal-printed dress with faux-fur trim, jagged edge hem and removable distressed faux-leather belt with skeleton bones trim. Includes bone barrette, fur boot toppers, necklace, and arm wrap. (Inflatable club not included)
(Six-Piece Set)



Style 11134

"Saloon Gal"

S, M, L, XL
1X, 2X, 3X

Ultra-flattering, western-styled off-the-shoulder dress with attached skirt and distressed leather-look lace-up waist corset. (Choker and petticoat not included.)
(Two-Piece Set)



Style 10228

"Rifleman"

M, L, XL, XXL

Fringe coat. Includes cowboy hat. (Shirt, bandana, jeans and boots not included.)
(Two-Piece Set)





Style 11174

"Deer Me"

S, M, L, XL

Adorable brown-spotted stretch panne velvet cold-shoulder dress with faux-fur detailing and removable tail. Includes antler headband with daisy trim and boot covers. (Four-Piece Set)

Style 11625

"Ms. Claus"

XS, S, M, L, XL

Festive and fun stretch velvet red jumpsuit with fur trim and oversized hood has an adorable candy cane zipper pull. Also includes belt and fur boot toppers. (Three-Piece Set) (Gloves not included.)

(Shown With)
Style 5218
"Luna Gloves"
O/S



"Deer Me" costume also pairs well with Dreamguy Style 11175 "On the Hunt"

Style 11171

"Hippie Hottie"

S, M, L, XL
1X, 2X, 3X

Groovy starburst tie-dye dress and faux-suede fringe vest with removable "Flower Power" and "Peace" pins. Includes head tie, sunglasses, arm tie and peace sign necklace. (Bracelet not included.) (Eight-Piece Set)



Style 11172

"Hippie Dude"

M, L, XL, XXL

Woodstock-inspired faux-suede fringed top with lace up detailing. Includes tie-dye head band and "Make Love Not War" and "Peace" pins. (Sunglasses not included.) (Four-Piece Set)





Style 11556

"70's Icon"
(Men's)

M, L, XL, XXL

Groovy holographic print button
down shirt and
moustache.
(Pants, belt, and wig not
included.)
(Two-Piece Set)

(Shown With)
Style 9605
"Men's Disco Pant"
"M,L,XL,XXL"

Style 11555

"70's Icon"
(Women's)

S, M, L, XL

Fabulous iconic gold
holographic print jumpsuit
with cascading sleeves and
rhinestone belt
detailing.
(Microphone not included.)
(One-Piece Set)

Style 11122

"Hair Band"
(Men's)

M, L, XL, XXL

Heavy metal inspired look with ripped shirt with fishnet sleeves and animal-printed pants. Includes metal studded belt, head band and two animal-printed belt ties. (Guitar not included.) (Five-Piece Set)

(Shown With)
Style 11141 "Unisex Rocker Wig"
Adjustable

Style 11123

"Hair Band"
(Women's)

S, M, L, XL

Heavy metal inspired look with animal-printed pants and ripped rocker top with "Heavy Metal" screen print and fishnet sleeves. Includes metal stud belt, head wrap, and two animal-printed belt ties. (Bracelets and guitar not included.) (Five-Piece Set)

(Shown With)
Style 11141 "Unisex Rocker Wig"
Adjustable



Style 9468

"Disco Dude"

M, L, XL, XXL

Black polyester button front shirt with metallic holographic disco dot. (Pants not included.) (One-Piece Set)

(Shown With)
Style 9605
"Men's Disco Pant"
M, L, XL, XXL

Style 11305
"Unisex Afro Wig"
Black, Brown

Style 11106

"Disco Diva"

S, M, L, XL
1X, 2X, 3X

Foxy black knit dress with metallic holographic disco dot, sweetheart neckline and side slit. Includes stretch pink sequin belt and disco ball necklace. (Additional jewelry not included.) (Three-Piece Set)



Style 11571

"High School Hottie"

S, M, L, XL

Flirty black and white woven
plaid jacket with
pleated school girl skirt.
Also Includes hat with
bow detail.
(Knee socks not included.)
(Three-Piece Set)

Style 9848

"Fancy Girl"

S, M, L, XL

Woven plaid jacket with
matching pleated skirt.
(Knee-high socks and cell
phone not included.)
(Two-Piece Set)

Style 8817

"Dirty Cop Officer Ed Banger"

M, L, XL, XXL

Black sleeveless collared shirt with front pockets, police patch and removable neck tie. Includes police hat with badge pin, "Officer Ed Banger" nameplate, removable police badge and arm band. (Sunglasses, handcuffs, baton and pants not included.) (Six-Piece Set)

Style 11635

"Officer Lauren Order"

S, M, L, XL

This sleek, ultra-flattering police costume includes a jumpsuit with police patches, police hat with badge, and "Officer Lauren Order" name plate. Costume also includes a very unique waist cincher belt with handcuff detailing and handcuffs. (Sunglasses, gloves and baton not included.) (Four-Piece Set)





Style 11628

"The Sergeant"

M, L, XL, XXL

Rugged sleeveless button down police shirt has police patches and two-pocket front. Also includes police hat with badge, Sgt. Dick Spectacular name plate, and tie.
(Gloves, handcuffs, and sunglasses not included.)
(Four-Piece Set)

Style 10719

"Officer Pat U. Down"

S, M, L, XL

Sleek, double-breasted dress with shiny patent leather trim, police badges and "Police" screen print. Includes belt, police hat with badge, handcuffs, fingerless gloves with "Jail Time" screen print and "Officer Pat U. Down" nameplate. (Sunglasses, baton and jewelry not included.)
(Six-Piece Set)

Style 11557

"Wake N' Bake Nurse"

S, M, L, XL

Adorable marijuana printed nurse uniform with matching hat and stethoscope. Also includes a name plate that says, "Nurse Sky High". (Stockings with bows not included.) (Four-Piece Set)

Style 11558

"Wake N' Bake Doctor"

M, L, XL, XXL

Marijuana printed lab coat with Wake n' Bake Dispensary patch and stethoscope. Also includes a name plate that says, "Dr. Filmore Blunts". (Shirt, pen, and pants not included.) (Three-Piece Set)

(Shown With)
Style 6379
"Men's Basic Pant"
Black, White
M, L, XL, XXL





Style 5236

"Mile High Pilot Hugh Jorgan"

M, L, XL, XXL

Button-front jacket with satin and gold trim details. Includes pilot hat, collar with necktie and removable "Mile High Pilot Hugh Jorgan" name badge. (Pants not included.) (Four-piece set)

(Shown With)

Style 6379

"Men's Basic Pant"

M, L, XL, XXL

Style 10685

"Flight Captain"

S, M, L, XL

Midi-length, stretch-knit dress with gold detailing. Includes pilot hat, "Mile High Captain" pin and belt. (Three-Piece Set)



Style 10315

"World Champion"
(Women's)

S, M, L, XL

Black satin boxing robe with belt. Includes lace-up top, boxing gloves and skirt with loop to hold gloves, athletic striping and screen prints. (Five-Piece Set)

Style 10322

"World Champion"
(Men's)

M, L, XL, XXL

Black and gold satin robe with tie belt and gold metallic "World Champion" screen-print. Includes boxing gloves, shorts, and World Champion Belt. (Five-Piece Set)

Style 11180

"Angel of Darkness"

S, M, L, XL
1X, 2X, 3X

Radiant black dress with exquisite neckline appliqué, sequin trim and hi-low hemline skirt with layers of glittered feather-shaped petals. Includes black feather angel wings and sequin halo headband. (Gloves not included.) (Three-Piece Set)



(Shown With)
Style 5218
"Luna Gloves"
O/S

Style 11633

"Angel Beauty"

S, M, L, XL

This glistening white angel costume includes a dress with sequined neckline applique, and hi-low hemline skirt with layers of glittered feather shaped petals. Also includes white feather angel wings and a radiant headpiece. (Gloves and jewelry not included.) (Three-Piece Set)

(Shown With)
Style 5218
"Luna Gloves"
O/S





Style 11561

"Arabian Prince"

M, L, XL, XXL

Captivating and ultra-comfortable costume includes Dhoti pants with gold printed velvet vest. Also includes faux brown leather hat with bobby pin loops, and belt.
(Sword not included.)
(Four-Piece Set)

Style 11576

"Arabian Princess"

S, M, L, XL

This dazzling Arabian Princess costume includes an off-the-shoulder top with rhinestone embellishment and adjustable shoulder straps. Matching harem pants have a metallic gold print at hemline, and attached printed over skirt. Also includes headpiece.
(Jewelry not Included.)
(Three-Piece Set)

(Shown With)
Style 10813
"Harem Princess Wig"
with attached Ribbon and Pearl
Jewel.

Black
O/S

Style 11574

"Heartless Hottie"

S, M, L, XL

Shimmering metallic silver stretch jumpsuit with padded shoulders, metal studs and screen printed heart clock detailing. Also includes oil can headband. (Gloves, axe and wig not included.) (Two Piece Set)

(Shown With)
Style 9969
"Gauntlet Gloves"
O/S

Style 8909

"Blue Gingham Dress"

S, M, L, XL

Blue and white checked dress with white chiffon sleeves. (Anklets, hair bows, petticoat, dog and basket not included.) (One-Piece Set)

Style 11566

"Queen of the Jungle"

S, M, L, XL

This furry, fabulous costume includes a zip-front romper with over sized hood which can be worn with included fur trimmed skirt. Also includes fur trimmed glovelettes and tail. (Four-Piece Set)





Style 11130

"The Lion Tamer"

S, M, L, XL

Rich red velvet top with gold fringed epaulets, lion head buttons and gold sequin trimmed peplum. Includes stretch leggings, top hat and belt with lion head buckle. (Gloves, whip and jewelry not included.) (Four-Piece Set)

Style 11131

"King of The Jungle"

M, L, XL, XXL

Gold stretch velour sleeveless lion top with attached tail and faux-fur hood with ears. Includes matching fingerless gloves. (Pants not included.) (Two-Piece Set)



Style 10624

"Dalmatian Darling"

S, M, L, XL

Dalmatian-print, stretch, crushed velvet dress with hood, faux-fur trim and tail. Includes matching boot covers and dog-collar choker. (Three-Piece Set)

Style 10671

"Dalmatian Diva"

S, M, L, XL
1X, 2X, 3X



Dalmatian-print midi dress with front zipper, faux-fur collar and ribbon-tie back slit. Includes shiny vinyl belt and bone accessory. (Wig, jewelry and cigarette holder not included.) (Three-Piece Set)

(Shown With)
Style 10675
"Dalmatian Diva Wig"
O/S



Style 11161 "Magic Cat" S, M, L, XL

Whimsical bright pink and purple striped panne velvet dress with attached tail and shaggy fur hood with cat ears. Includes fingerless gloves, choker and boot covers. (Wig not included.) (Three-Piece Set)

Style 11589 "Beyond Wonderland"

S, M, L, XL

Adorable storybook dress with underwire cups, ric rac trim and ruffled detailing. Also includes bow headband stocking topper bows, sleeves, and apron. (Stockings not included.) (Five-Piece Set)

Style 11590 "Queen of Hearts"

S, M, L, XL

This exquisite Queen of Hearts costume is loaded with beautiful detailing! Black velvet bodysuit with embellished underwire cups and snap crotch has an attached heart printed sheer skirt and peplum. Also includes heart shaped collar, choker, sleeves and crown. (Scepter and stockings not included.) (Five-Piece Set)

(Shown With) Style 5218
"Luna Gloves" O/S



Style 11627

"Mischief in Neverland"

XS, S, M, L, XL

Playful rich green velvet jagged edge dress with lace up neckline and button front skirt, opens to reveal included shorts. Costume also includes a hat with feather and belt. (Sword not included) (Four-Piece Set)



Style 9452

"Fairy-licious"

S, M, L, XL

Holographic-print stretch knit dress with corset-styled bodice, green rhinestone encrusted neckline appliqué and attached sparkly tutu bottom. Includes wand and fairy wings. (Earrings not included.) (Three-Piece Set)

Style 11182

"Big Bad Wolf"
(Women's)

XS, S, M, L, XL

Playful red plaid jumper dress with large front pocket and faux-fur trim. Includes shaggy faux-fur hood with wolf ears, matching fingerless gloves, and belt with attached furry tail. (Four-Piece Set)

Style 9477

"Little Red"

S, M, L, XL
1X/2X, 3X/4X

Beautifully-detailed fairytale dress with underwire foam cups with pleated ruffles, embroidered heart trim, attached petticoat and lace-trimmed apron. Includes full-length hooded satin cape. (Basket, thigh highs, stocking bows additional and satin gloves not included.) (Two-Piece Set)



(Shown With)
Style 5218
"Luna Glove"
O/S

Style Style 10342
"Bow Top Stockings"
O/S, O/S Queen



"Little Red" costume also pairs well
with Dreamguy Style 9493
"Big Bad Wolf"



Style 10639

"Frightfully Beautiful"

S, M, L, XL
1X, 2X, 3X

Spooky, luxe black velvet gown with sequin appliqué bodice, lace paneling in skirt and lace waterfall sleeves. (Jewelry not included.) (One-Piece Set)



Style 10640

"Mr. Fright"

M, L, XL, XXL

Kooky double-breasted suit jacket with pinstripe print and attached rose and spider boutonniere. Includes matching pants and casket-print tie. (Cigar and rose not included.) (Three-Piece Set)

Style 10641

"Friday"

S, M, L, XL

Creepy black velvet dress with cross buttons, white collar and cross screen-printed details on lapel. Includes stocking bow toppers with cross charms. (Doll and thigh highs not included.) (Two-Piece Set)

(Shown With)
Style 10814
"Double Braid Wig"
Black
O/S

Dreamgirl

Hot Haunts



Style 11636



Style 11636

"The Black Widow"

S, M, L, XL
1X, 2X, 3X

This captivating costume includes a sleek, strappy off-the-shoulder gown with jewel encrusted spider, a high scalloped slit and attached spider web cape. (Jewelry and headpiece not included.) (One-Piece Set)



(Shown With)
Style 11659
"Spider Headpiece"
O/S



Style 11582

"Pagan Witch"

S, M, L, XL

This bewitching, beautiful gown with oversized hood, cold shoulder sleeves, unique ripped-looking bodice fabric, has a full skirt with jagged edge pieces. Also includes choker with pentagram and waist cinching belt. (Press on nails not included.) (Three-Piece Set)

(Shown With)
Style 11328 "Extra-Long
Straight Wig"
Gray/White Mix
Adjustable



Style 11569

"Boo!"

S, M, L, XL

This spooky-licious ghost costume includes a tattered gown with skull design and matching choker. Also includes a tattered oversized sheer cape that attaches onto the shoulders of the gown with velcro. (Gloves and wig not included.) (Three-Piece Set)

(Shown With)
Style 11391
"Long Wavy Wig with
Back Twist"
White
Adjustable
and
style 5218
"Luna Glove"
O/S



Style 11577

"Drop Dead Beautiful"

S, M, L, XL
1X, 2X, 3X

Hauntingly beautiful vampire dress with rhinestone encrusted bleeding heart design and hi-low scalloped hemline. Removable cape has adjustable straps and vampire collar. (Headpiece and gloves not included.) (Two-Piece Set)



(Shown With)
Style 11657
"Drop Dead Beautiful
Headpiece"
and
Style 5218
"Luna Glove"
O/S



Style 10260

"Bloody Handsome"

M, L, XL, XXL

Black velvet coat with embossed scroll design and an attached vampire collar. Includes printed satin vest with attached shirt front and ruffled collar. (Pants and gloves not included.) (Two-Piece Set)



Style 11179

"Bare Bones Babe"

XS, S, M, L, XL

Creepy-licious skeleton-print top with full length attached sheer open-front skirt. Includes skeleton printed leggings, fingerless gloves, and black rose headpiece with skull. (Jewelry not included.) (Four-Piece Set)



Style A11189

"Shell No"

S, M, L, XL

Dark mermaid gown with skeleton screen print and fin shaped hemline. Includes starfish barrette. (Two-Piece Set)



(Shown With)
Style 11689
Long Straight Layered
Wig
White
Adjustable

Style 9904

"Mr. Bones"

M, L, XL, XXL

Black velvet jacket with red tattered edges and attached shirt front with skeleton print. Includes collapsible hat with skull and skeleton fingerless gloves. (Cigar and pants not included.) (Three-Piece Set)



(Shown With)
Style 6379
"Men's Basic Pant"
M, L, XL, XL, XXL

Style 10663

"Wicked, Wicked Witch"

S, M, L, XL

Sexy stretch-knit dress with cutout sequin pentagram appliqué on bodice. Includes removable, high-low, sparkly tulle skirt, mesh fingerless gauntlet gloves and tall witch's hat. (Broom and fishnet stockings not included.) (Four-Piece Set)



Style 10680

"Lady Of The Dead"

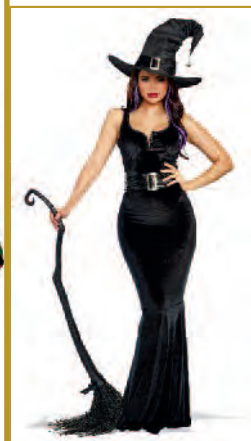
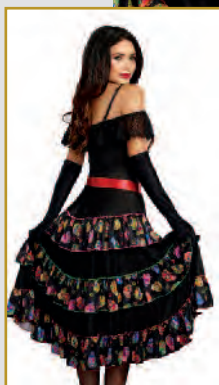
S, M, L, XL
1X, 2X, 3X

Flirty sugar skull dress with ruffled neckline, brightly-colored skeleton screen print, satin ribbon belt and multi-tiered skirt with sugar skull detailing. Includes beaded cross necklace. (Headpiece, stockings and gloves not included.) (Two-Piece Set)



(Shown With)
Style 10003
"Day of The Dead
Headpiece"
O/S

Style 5218
"Luna
Glove"
O/S



Style 11151

"Bewitching Beauty"

S, M, L, XL
1X, 2X, 3X



Bewitching black velvet gown with metal neckline closures and strategically placed purple lace-up back detailing. Includes belt, sheer jacket and witch hat with spider. (Broom not included.) (Four-Piece Set)



Style 11572

"Medusa"

S, M, L, XL

Alluring asymmetrical black velvet gown with green sequined snake design and front slit. Also includes rhinestone embellished headpiece with snakes. (Scepter not included.) (Two-Piece Set)



Style 11562

"Goddess of the Universe"

S, M, L, XL

Shimmering metallic silver gown
with silver star detailing and
attached cape.
Exquisite silver star headpiece
also included.
(Jewelry not included.)
(Two-Piece Set)



Style 11575

"Black Unicorn"

S, M, L, XL

Mystifying black velvet dress with silver sparkle print and multi-layered sparkly skirt. Includes unicorn headpiece and fringed tail. (Gloves and jewelry not included.) (Three-Piece Set)

(Shown With)
Style 5218
"Luna Glove"
O/S





Style 11633

"Angel Beauty"

S, M, L, XL

This glistening white angel costume includes a dress with sequined neckline applique, and hi-low hemline skirt with layers of glittered feather shaped petals. Also includes white feather angel wings and a radiant headpiece. (Gloves and jewelry not included.) (Three-Piece Set)

(Shown With) Style 5218
"Luna Glove"
O/S



Radiant black dress with exquisite neckline applique, sequin trim and hi-low hemline skirt with layers of glittered feather-shaped petals. Includes black feather angel wings and sequin halo headband. (Gloves, earrings and thigh highs not included.) (Three-Piece Set)

(Shown With) Style 10341
"Midnight Madness Gloves"
O/S

Style 11180

"Angel of Darkness"

S, M, L, XL
1X, 2X, 3X



Style 11563

"Magic Dragon"

S, M, L, XL
1X, 2X, 3X

Darling dragon costume includes a reptile printed dress with sheer webbed sleeves. Also includes long dragon headpiece with attached tail. (Wig, gloves and stockings not included.) (Two-Piece Set)



(Shown With)
Style 11352
Long Wavy Ombre Wig
Black/Lavender
Adjustable



Style 11176

"Shell Yeah!"

S, M, L, XL

Exquisite dark mermaid halter gown with shell shaped underwire foam cups, holographic printed silver scales and mermaid tail with back slit. Includes sequin starfish barrette. (Jewelry not included.) (Two-Piece Set)



Style 11154

"Unicorn Beauty"

XS, S, M, L, XL

Sparkle-printed white stretch velvet zipper-front dress with rainbow faux-fur trim, attached tail and hood with unicorn horn & ears. Includes boot covers. (Wig not included.) (Two-Piece Set)



Style 11149

"The Sorceress"

S, M, L, XL
1X, 2X, 3X

Exquisite midnight blue velvet gown with attached sparkling silver mystical-print sheer cape. Includes shimmering rhinestone headpiece. (Scepter not included.) (Two-Piece Set)



Style 8860

"He's a God"

M, L, XL, XXL

White tunic with gold satin attached cape and matching trim. Gold leaf headpiece, removable belt and wrist gauntlets included. (Four-Piece Set)



Dreamgirl® What a character





Style 11629

Style 11629

"Wrestling Champ"

S, M, L, XL

Electrifying fuchsia with
turquoise jumpsuit with
silver glitter stars and
"Champion" belt with velcro
back closure. Also includes
glittering silver gloves.
(Jewelry not included.)
(Three-Piece Set)

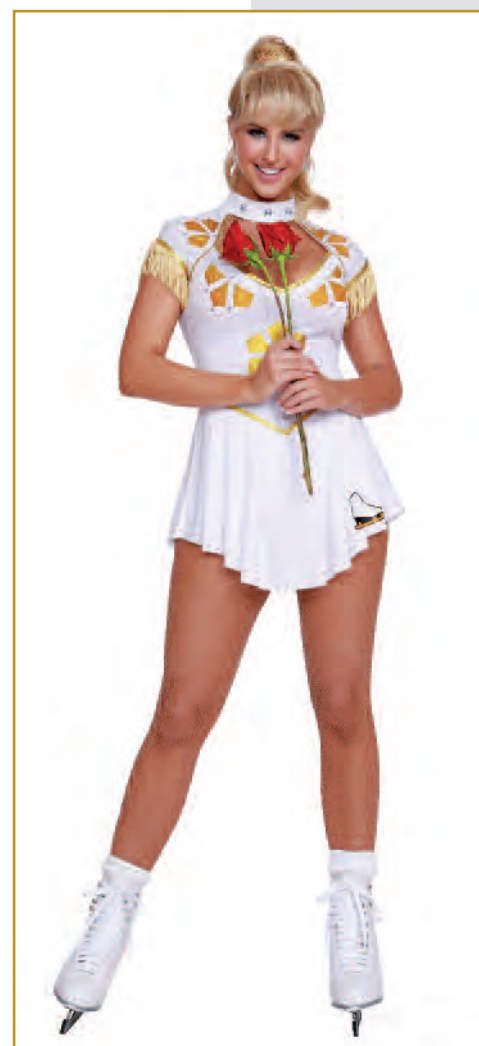


Style 11595

"I Skate"

S, M, L, XL

This adorable romper with attached pleated skater skirt, has a gold sparkle snowflake design and rhinestone and sequin trim. Also includes a gold sequin scrunchie. (Ice skates, stockings and socks not included.) (Two-Piece Set)



Style 11632

"Horror Honey"

S, M, L, XL

Fabulously frightening striped suit with peplum and belt also includes a matching tie. (Gloves and hair extensions not included.) (Four-Piece Set)

(Shown With)

Style 5218
"Luna Glove"
O/S

Style 11401
"Long Curly Ombre
Three Piece Hair Extensions"
Neon Green Mix
O/S



Style 11594

"Gothic Lolita"

S, M, L, XL

This costume, inspired by a popular Japanese subculture, includes a gorgeously gothic velvet and satin dress with black rose neckline trim, sheer sleeves, and a full skirt with white printed crosses. Also includes a black rose headpiece and choker with cross.

(Wig, gloves, stockings and jewelry not included.)
(Three-Piece Set)

(Shown With)
Long Curly Wig
Style 11370
Grey
Adjustable



Style 11637

"Wicked Clown"

XS, S, M, L, XL

This scary-licious clown costume includes a satin dress with sheer ruffled attached skirt and tattered sleeves with matching bloomer styled shorts, and ruffled collar. Also includes playful clown headpiece. (Wig, knife, and stockings not included.) (Four-Piece Set)

(Shown With)
Style 11115
"Long Wavy Layered Wig"
Flame Red
Adjustable

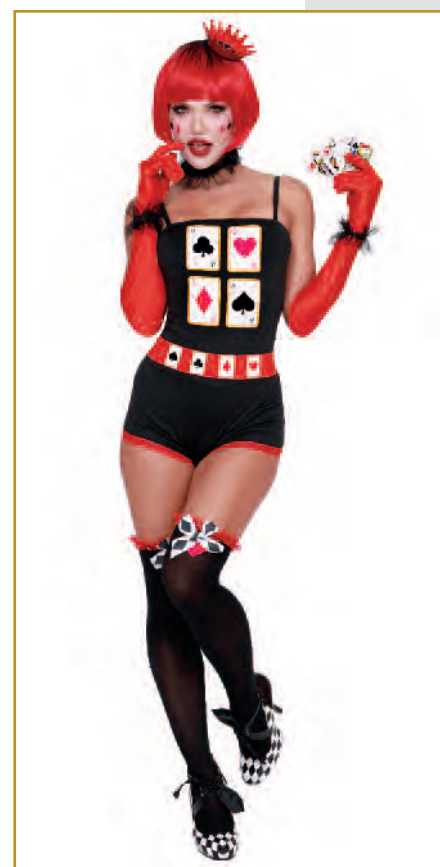
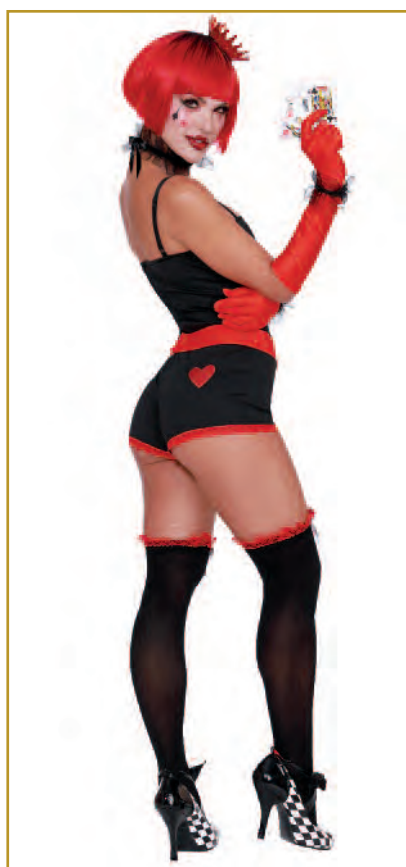


Style 11591

"Poker Face"

S, M, L, XL

This adorable costume includes a romper with card print front, and strategically placed heart on the back. Unbutton the heart shaped buttons on the included satin skirt for a flirtier look. Includes a crown, belt with card print, ruffle collar and cuffs. (Six Piece Set)
(Gloves, stockings, and cards not included.)



Style 11598

"Defender"

S, M, L, XL

Be ready to save the day in this body slimming, sleek jumpsuit. Costume includes padded chest and shoulder armor. (Gloves and weapon not included.) (Two-Piece Set)



Style 11573

"Slaying It"

S, M, L, XL

Fierce bronze metallic warrior dress with hi-lo hemline and rhinestone embellishment. Also includes jeweled headpiece and wrist gauntlets. (Jewelry not included.) (Three Piece Set)





Style 11593

"King of Thrones"

M, L, XL, XXL

Be ready to slay a dragon in this gallant costume, which includes a faux leather tunic top and full velvet cape with oversized fur collar. Also includes a medieval styled belt with velcro back closure. (Gloves, sword and pants not included.) (Three-Piece Set)

(Shown With)
Style 6379
"Men's Basic Pant"
M, L, XL, XXL
Black



Beautiful white reptile embossed velvet gown with flowing sheer chiffon sleeves, has side slits and a dragon applique. (Wig sold separately.) (One-Piece Set)

(Shown With)
Style 11391
"Long Wavy Wig with Back Twist"
White
Adjustable

Style 11552

"Dragon Beauty"

S, M, L, XL

Style 11630

"Pussycat"

S, M, L, XL

Adorable kitty costume with romper, matching skirt, choker, and cat ear headband. Also includes belt and tail with velcro attachment to the romper to create a unique stand up tail look. (Microphone not included.) (Six-Piece Set)



Style 10641

"Friday"

S, M, L, XL

Creepy black velvet dress with cross buttons, white collar and cross screen-printed details on lapel. Includes stocking bow toppers with cross charms. (Doll and thigh highs not included.) (Two-Piece Set)



(Shown With)
Style 7031
"Sheer Thigh Highs With
Back Seam"
O/S

Style 10814
"Double Braid Wig"
Black
O/S

Style 11108

"Madame Skeleton"

S, M, L, XL

Graveyard-inspired suit jacket with jagged edge collar and skull-button closure. Includes matching dress with strappy-neck detail and skeleton gloves. (Fishnet stockings not included.) (Three-Piece Set)



(Shown With)
Style #11689
"Long Straight Layered
Wig"
White
Adjustable



Style 10640

"Mr. Fright"

M, L, XL, XXL

Kooky double-breasted suit jacket with pinstripe print and rose boutonniere with attached spider. Includes matching pants and casket-print tie. (Cigar not included.) (Three-Piece Set)



Style 10639

"Frightfully Beautiful"

S, M, L, XL
1X, 2X, 3X

Spooky, luxe black velvet gown with sequin appliqué bodice, lace paneling in skirt and lace waterfall sleeves. (Rose and jewelry not included.) (One-Piece Set)



Style 11118

"Sexy Starlet"

S, M, L, XL

Glamorous, Hollywood sequin gown with underwire foam cups, removable/adjustable halter strap and side slit. Includes purple opera length gloves. (Wig, microphone and jewelry not included.) (Three-Piece Set)

(Shown With)
Style 11115
"Long Wavy Layered Wig"
Flame Red
Adjustable



Style 11109

"Blonde Bombshell"

S, M, L, XL

Hollywood-starlet-styled bodysuit with halter neckline and snap crotch. Includes sheer chiffon white skirt with bow detail. (Wig and jewelry not included.) (Two-Piece Set)

(Shown With)
Style 11387
"Retro Movie Star Wig"
Blonde
Adjustable



Style 10321

"Harlequin Blaster"

S, M, L, XL

Sleek metallic jumpsuit with zipper-front bodice, sequin detailing and an attached chain. Includes fingerless gloves, choker and knife. (Hair ties and bat not included.) (Four-Piece Set)



Style 11130

"The Lion Tamer"

S, M, L, XL

Rich red velvet top with gold fringed epaulets, lion head buttons and gold sequin trimmed peplum. Includes stretch leggings, top hat and belt with lion head buckle. (Gloves, whip and jewelry not included.) (Four-Piece Set)



Dreamgirl

Extra Curricular

SCHOOL
COUNSELOR

Styles 11571, 9848

Style 11571

"High School Hottie"

S, M, L, XL

Flirty black and white woven
plaid jacket with pleated school
girl skirt. Also Includes hat with
bow detail.
(Knee socks not included.)
(Three-Piece Set)



Style 9848

"Fancy Girl"

S, M, L, XL

Woven plaid jacket with matching pleated skirt. (Knee-high socks and cell phone not included.)
(Two-Piece Set)



Style 9419

"Prep School"

S, M, L, XL

Button-front, white, collared shirt with a "Manhattan Preparatory School" patch and woven-plaid pleated schoolgirl skirt. Includes tie with clip and headband. (Knee-high socks not included.)
(Four-Piece Set)



Style 11126

"Half-Baked Scout"

S, M, L, XL

Adorable, button-front dress with contrast pleated hemline. Includes hat and vest with whimsical patches. (Socks not included.)
(Three-Piece Set)

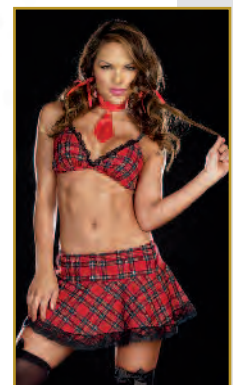


Style 8201

"After School Special"

S, M, L, XL

Convertible schoolgirl outfit with button-down preppy top with chenille varsity letter detail and flirty plaid skirt. Coordinating lace-trimmed bra top and necktie included. (Thigh highs and hair bows not included.)
(Four-Piece Set)



(Shown With)
Style 10342 "Bow Top Stockings"
O/S, O/S Queen



Style 11581

"Tackle"

S, M, L, XL
1X, 2X, 3X

Playful football jersey with zip
sides and matching shorts.
Also includes athletic socks.
(Bra top and football
not included.)
(Three-Piece Set)





Style 10322

"World Champion"
(Men's)

M, L, XL, XXL

Black and gold satin robe with tie belt and gold metallic "World Champion" screen print. Includes boxing gloves, shorts, and "World Champion" belt.
(Five-Piece Set)



Style 10315

"World Champion"
(Women's)

S, M, L, XL

Black satin boxing robe with belt. Includes lace-up top, boxing gloves and skirt with loop to hold gloves, athletic striping and screen prints.
(Five-Piece Set)



Sleek zipper-front jumpsuit with checkered sides, "racing" and flame screen-print details and authentic-looking race patches. Includes matching black belt. (Sunglasses and flag not included.) (Two-Piece Set)

Style 10655

"Start Your Engines!"

S, M, L, XL

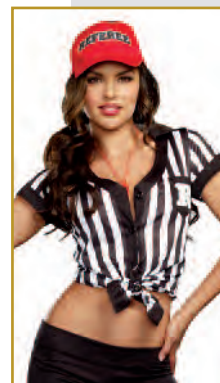


Style 9494

"My Game, My Rules"

S, M, L, XL

This versatile button-down, referee-style dress can also be worn tied around the waist as a top. Includes shorts, thigh-high socks, whistle and hat. (Five-Piece Set)



Style 6469

"Grand Slam"

S, M, L, XL
1X/2X, 3X/4X

Stretch-knit, snap-front dress with sequin embroidered "Grand Slam" appliqué and heat transfer number "10" detail on back. Includes stretch-knit short with elastic waist, baseball cap and athletic knee-high socks. (Baseball mitt and baseball not included.) (Four-Piece Set)



Dreamgirl® 24/7 on Call



Style 11570



Style 11570

"Fighter Pilot"

S, M, L, XL

Stylish pilot's woven dress with military buttons, flight patches and belt, can be unbuttoned to reveal included shorts. (Sunglasses, jewelry and gloves not included.) (Three-Piece Set)



Style 11635

"Officer Lauren Order"

S, M, L, XL

This sleek, ultra-flattering police costume includes a jumpsuit with police patches, police hat with badge, and Officer Lauren Order name plate. Costume also includes a very unique waist cincher belt with handcuff detailing and handcuffs. (Sunglasses, gloves and baton not included.)
(Four-Piece Set)





Style 11628

"The Sergeant"

M, L, XL, XXL

Rugged sleeveless button down police shirt has police patches and two-pocket front. Also includes police hat with badge, Sgt. Dick Spectacular name plate, and tie. (Gloves, handcuffs, and sunglasses not included.) (Four-Piece Set)



Be ready for action in this navy blue DEA dress with logo on the front and back. Also includes matching hat and badge. (Handcuffs, sunglasses, jewelry and gloves not included) (Two-Piece Set)

Style 11640

"DEA Agent"

S, M, L, XL

Style 8817

"Dirty Cop Officer
Ed Banger"

M, L, XL, XXL

Black sleeveless collared shirt with front pockets, police patch and removable neck tie. Includes police hat with badge pin, "Officer Ed Banger" nameplate, removable police badge and arm band. (Sunglasses, handcuffs, baton and pants not included.) (Six-Piece Set)



Style 8816

"Dirty Cop Officer
Anita Bribe"
S, M, L, XL

Black bengaline stretch knit dress with belt and police patches on shoulders. Costume includes police hat with badge pin, "Officer Anita Bribe" nameplate and removable police badge. (Sunglasses, handcuffs, pantyhose and baton not included.) (Five-Piece Set)



Style A9981

"S.W.A.T. Police"

S, M, L, XL
1X/2X, 3X/4X

Black knit dress with front zipper and "S.W.A.T. Police" screen print. on back. Includes hat and police badge. (Baton and sunglasses not included.) (Three-Piece Set)



Style 10719

"Officer Pat U. Down"

S, M, L, XL

Sleek, double-breasted dress with shiny patent leather trim, police badges and "Police" screen print. Includes belt, police hat with badge, handcuffs, fingerless gloves with "Jail Time" screen print and "Officer Pat U. Down" nameplate. (Sunglasses, baton and jewelry not included.) (Six-Piece Set)



Style 11135

“S.W.A.T. Police”

S, M, L, XL

Zipper-front navy romper with police patches and vinyl collar. Includes handcuff belt, hat, whistle and zipper-front skirt with “Bad Ass” back screen print and front patch. (Sunglasses, earrings and baton not included.) (Five-Piece Set)



Style 10240

“Lieutenant Ivana Misbehave”

S, M, L, XL

Sleek navy jumpsuit with shiny patent leather trim. Includes utility belt, police hat with badge, radio/speaker, leg garters, handcuffs, police badge pin and “Lieutenant Ivana Misbehave” nameplate. (Sunglasses and baton not included.) (Eight-Piece Set)



Style A8922

“R.eally N.aughty”

S, M, L, XL

Nurse dress with attached apron and nurse hat. (Thigh highs, clipboard and pen not included.) (Two-Piece Set)



Style 10284

“All Aboard”

S, M, L, XL
1X/2X, 3X/4X

Adorable retro-styled dress with sailor collar, sequin anchors and a full circle skirt. Sailor hat included. (Earrings not included.) (Two-Piece Set)





Style 10685

"Flight Captain"

S, M, L, XL

Midi-length, stretch-knit dress with wings patches and gold detailing. Includes captain's hat, "Mile High Captain" pin and belt. (Four-Piece Set)



Style 5236

"Mile High Pilot Hugh Jorgan"

M, L, XL, XXL

Button front jacket with satin and gold trim details. Includes pilot hat, collar with necktie and removable "Mile High Pilot Hugh Jorgan" name badge. (Pants not included.) (Four-Piece Set)

(Shown With)
Style 6379 "Men's Basic Pant"
M, L, XL, XXL



Style 11558

"Wake N' Bake Doctor"

M, L, XL, XXL

Marijuana printed lab coat with Wake n' Bake Dispensary patch and stethoscope. Also includes a name plate that says, "Dr. Filmore Blunts". (Shirt, pen, and pants not included.) (Three-Piece Set)



Adorable marijuana printed nurse uniform with matching hat and stethoscope. Also includes a name plate that says, "Nurse Sky High". (Stocking with bows not included) (Four-Piece Set)

Style 11557

"Wake N' Bake Nurse"

S, M, L, XL



Style 11639

"Keep it Clean"

S, M, L, XL
1X, 2X, 3X

This flirty maid's costume includes an adorable black dress with white ruffled detailing. Also includes ruffled headpiece, and apron. (Gloves, stockings and feather duster not included.) (Three- Piece Set)



(Shown With)
Style 10342
"Bow Top Stockings"
Black, White
O/S, O/S Queen

Dreamgirl[®] Guys and Dolls

Style 11545



Style 11544

"All That Jazz"

S, M, L, XL

Dazzling 1920's black and silver sequin dress with black velvet sides and back, has a flirty sheer front inset, fringe hemline, and back zipper. Includes sequin headpiece with ostrich feather.
(Gloves, Cigarette Holder, Boa, Jewelry and stockings not included.)
(Two-Piece Set)

(Shown With)
Style 5218
"Luna Glove"
O/S



Style 11545

"Miss Ritz"

S, M, L, XL
1X, 2X, 3X

Exquisite rich purple flapper dress with off-the shoulder fringe sleeves and back zipper. Includes sequin headpiece with ostrich feather. (Gloves, cigarette holder, and jewelry not included.)
(Two-Piece Set)



(Shown With)
Style 5218
"Luna Glove"
O/S



Style 10700

"Swanky Flapper"

S, M, L, XL
1X, 2X, 3X

1920's-inspired dress with off-the-shoulder fringe detail and gold intricately-embroidered neckline & hemline trim. Includes gold sequined headpiece with ostrich feather.

(Boa, gloves, cigarette holder and jewelry not included)

(Two-Piece Set)



(Shown With)
Style 10810
"Retro Wig"
O/S



Style 8105

"Zoot Suit Riot"

M, L, XL, XXL

Button-front, longer-length pinstriped zoot suit with matching pants with side pocket and gold chain detail. Includes adjustable/removable elastic suspenders, matching hat and necktie with "\$" sign detail. (Shirt not included.) (Five-Piece Set)



Style 10210

"Downton Doll"

S, M, L, XL
1X, 2X, 3X

Have a rip-roaring time in this 1920's inspired beautiful flapper costume! You'll dazzle them all, coming and going, in this deco-design printed velvet dress with embellished neckline. Sequin fringe hemline and matching headpiece with ostrich feather completes this fabulous look. Exquisite midnight blue embossed stretch velvet dress with jeweled neckline and sequin fringe trim. Includes jeweled headpiece with ostrich feather.

(Boa, gloves, cigarette holder and jewelry not included)

(Two-Piece Set)

(Shown With)
Style 5218
"Luna Glove"
O/S



Style 9838

"Good Time Charlie"

M, L, XL, XXL

Striped three-button jacket. Includes hat and bow tie. (Shirt and pants not included.) (Three-Piece Set)



(Shown With)
Style 6379 "Men's
Basic Pant"
M, L, XL, XXL



Style 8190

"Gangsta"
(Men's)

M, L, XL, XXL

Black and white pinstriped, double-breasted gangster suit. Includes a dickie, machine gun screen-printed necktie, carnation pin and hat. (Shirt not included.)
(Six-Piece Set)



Elegant, burgundy stretch velvet dress with authentic 1920's elaborately beaded trims, fringe hem and sequin detailing. Includes stretch sequin headpiece with ostrich feather. (Gloves, Boa, jewelry and cigarette holder not included.)
(Two-Piece Set)

Style 11102

"Million Dollar Baby"

S, M, L, XL
1X, 2X, 3X

(Shown With) Style 5218
"Luna Glove"
O/S



Dreamgirl® Through the Decades



Styles 11556 and 11555





Style 11555

"70's Icon"
(Women's)

S, M, L, XL

Fabulous iconic gold holographic print jumpsuit with cascading sleeves and rhinestone belt detailing. (Microphone not included.) (One-Piece Set)



Groovy holographic print button down shirt and moustache. (Pants, belt, and wig not included.) (Two-Piece Set)

(Shown With)
Style 9605 "Men's Disco Pant"
"M,L,XL,XXL"

Style 11304 "Shag Wig"
Brown
Adjustable

Style 11556

"70's Icon"
(Men's)

M, L, XL, XXL



Style 9468

"Disco Dude"
M, L, XL, XXL

Black polyester button front shirt with metallic holographic disco dot. (Pants, sunglasses, belt, wig, and chain not included) (One-Piece Set)

(Shown With)
Style 9605
"Men's Disco Pant"
M, L, XL, XXL



Style 11106

"Disco Diva"
S, M, L, XL
1X, 2X, 3X

Foxy black knit dress with metallic holographic disco dot, sweetheart neckline and side slit. Includes stretch pink sequin belt and disco ball necklace. (Additional jewelry not included.) (Three-Piece Set)



Style 9469

"Disco Doll"
S, M, L, XL

Black stretch knit jumpsuit with metallic holographic disco dot. Includes stretch sequin belt. (Two-Piece Set)



Style 8158

"Go Go Gorgeous"
S, M, L, XL

Stretch-knit, A-line, go-go dancer dress with retro-pattern, bell-shaped long sleeves and unique-shaped neckline. Includes matching retro glasses, earrings, headband and faux-vinyl daisy belt. (Five-Piece Set)





Style 11171

"Hippie Hottie"

S, M, L, XL
1X, 2X, 3X



Groovy starburst tie-dye dress and faux-suede fringe vest with removable "Flower Power" and "Peace" pins. Includes head tie, sunglasses, arm tie and peace sign necklace. (Bracelet not included.) (Eight-Piece Set)



Woodstock-inspired faux-suede fringed top with lace up detailing. Includes tie-dye head band and "Make Love Not War" and "Peace" pins. (Sunglasses not included.) (Four-Piece Set)

Style 11172

"Hippie Dude"

M, L, XL, XXL



Style 11123

"Hair Band"
(Women's)

S, M, L, XL

Heavy metal inspired look with animal-printed pants and ripped rocker top with "Heavy Metal" screen print and fishnet sleeves. Includes metal stud belt, head wrap, and two animal-printed belt ties. (Bracelets and guitar not included.)
(Five-Piece Set)

(Shown With) Style 11141
"Unisex Rocker Wig"
Black
Adjustable



Heavy metal inspired look with ripped shirt with fishnet sleeves and animal-printed pants. Includes metal studded belt, head band and two animal-printed belt ties. (Guitar not included.)
(Five-Piece Set)

(Shown With) Style 11141
"Unisex Rocker Wig"
Black
Adjustable



Style 11122

"Hair Band"
(Men's)

M, L, XL, XXL

Dreamgirl® Through The Ages



Style 11588, 11656



Style 11588

"Cleopatra"

S, M, L, XL

This stunning Cleopatra costume includes a shimmering sequin gown with slit, jeweled Egyptian collar with attached cape, and rhinestone embellished belt. (Headpiece and scepter not included.) (Three-Piece Set)

(Shown With)
Egyptian Queen Wig
Style 10832
Black
O/S

(Shown With)
"Cleopatra Headpiece"
Style 11656
O/S



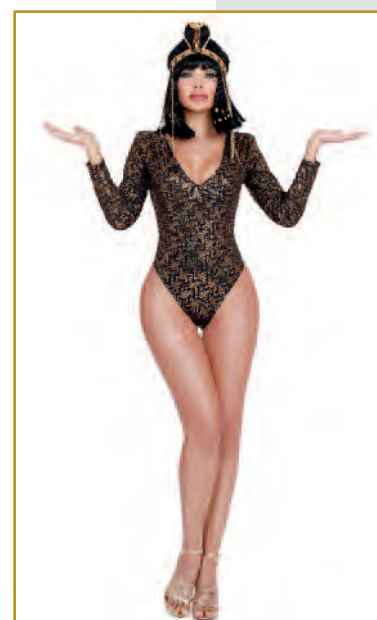
Style 11565

"Queen Cleo"

XS, S, M, L, XL

This exquisite costume includes an Egyptian print bodysuit with snap-crotch and chiffon skirt with Egyptian Ankh symbol. Also includes a rhinestone embellished headpiece with cobra. (Scepter and wig not included.) (Three-Piece Set)

(Shown With)
Egyptian Queen Wig
Style 10832
Black
O/S





Style 11165
"Kitty Of De Nile"
S, M, L, XL

Shimmering black jumpsuit with elaborate gold trim and removable tail. Includes Egyptian-print collar, skirt and headpiece with attached cat ears. (Wig not included)
(Five-Piece Set)

(Shown With) Style 10832
"Egyptian Queen Wig"
Black
O/S



Breathtaking gold-printed cerulean blue velvet gown with gold pleated hemline. Includes belt with jeweled buckle, gold arm bands, jeweled collar with attached gold cape and Nefertiti headpiece with rhinestone snake. (Ankh staff not included.)
(Five-Piece Set)

Style 11166
"Nefertiti"
S, M, L, XL

Style 9893

"King of Egypt"
M, L, XL, XXL

This versatile costume can be worn with or without the included shirt. Includes Egyptian collar with attached gold cape, wrist gauntlets, Royal Nemes headpiece, Eye of Horus Necklace and Egyptian Shendyt skirt with embellished waistband. (Six-Piece Set)



Style 10290

"Exquisite Cleopatra"
S, M, L, XL
1X/2X, 3X/4X

Exquisite velvet gown with Egyptian pattern, front slits and gold-trimmed detailing. Includes Egyptian collar and belt. (Jewelry and headpiece not included.) (Three-Piece Set)



Style 10654

"Ramses"
M, L, XL, XXL

Metallic gold shirt, Egyptian collar with attached gold cape, wrist gauntlets, Royal Nemes headpiece and Egyptian Shendyt skirt with embellished waistband. This versatile costume can be worn with or without the included shirt. (Sword not included.) (Five-Piece Set)

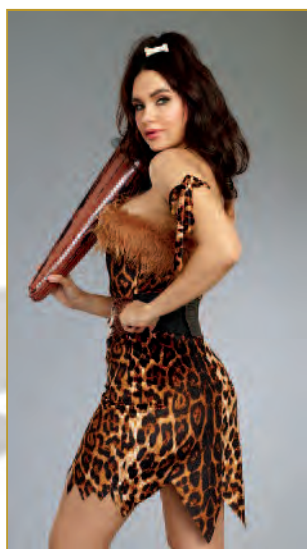


Style 11159

"Caesar"
M, L, XL, XXL

Regal long tunic and draped red satin toga with gold leaf printed design and trim. Includes wrist gauntlets and gold leaf head piece. (Four-Piece Set)



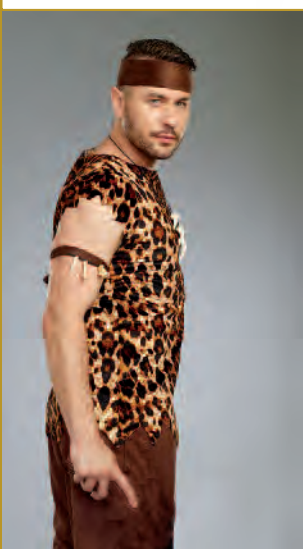


Style 11139

"Clubbin' Cutie"

S, M, L, XL

Pre-historic chic, animal-printed dress with faux-fur trim, jagged edge hem and removable distressed faux-leather belt with skeleton bones trim. Includes bone barrette, fur boot toppers, necklace, and arm wrap. (Inflatable club not included) (Six-Piece Set))



Animal-printed stretch velour top with jagged hem and faux-suede pants with jagged hem. Includes head wrap, arm band and necklace. (Five-Piece Set)

Style 11138

"Cave Man"

M, L, XL, XXL



Style 11584

"Samurai"
(Women's)

S, M, L, XL

Dress to kill in this sleek black jumpsuit with lace up neckline detail and Samurai belt with attached skirt. Also includes headpiece and wrist gauntlets. (Sword not included.)
(Four-Piece Set)



Prepare for battle in this fierce tunic, matching belt with Samurai patch, head piece and wrist gauntlets. (Pants and sword not included.)
(Four-Piece Set)

Style 11585

"Samurai"
(Men's)

M, L, XL, XXL

Style 11583

"Medieval Maiden"

S, M, L, XL
1X, 2X, 3X

Simply stunning rich velvet gown with exquisitely sequined embellished front bodice and gold satin trim. Also includes headpiece with veil. (Jewelry not included.) (Two-Piece Set)



Style 11587

"The Conqueror"
(Men's)

M, L, XL, XXL

This fierce warrior costume includes a tunic with chainmail looking top section, padded vest with tie sides and attached panels, and shoulder armor. (Gloves and sword not included.) (Three-Piece Set)



Style 9827

"Victorious Beauty"

S, M, L, XL

Distressed brown faux-leather dress with gold detailing. Includes matching brown velvet cape with faux-fur collar. (Sword not included) (Two-Piece Set)



Style 5084

"Hot Scottie"

M, L, XL, XXL

Plaid pleated kilt with attached sash. Includes matching hat, belt with bag and two sock garters with matching plaid ties. (Socks and shirt not included.) (Five-Piece Set)



Style 10669

"Gypsy"

S, M, L, XL
1X, 2X, 3X

Peasant-style dress with velvet lace-up bodice, gold trim, multi-tiered handkerchief skirt with paisley print and gold coin detailing. Includes matching head wrap with gold coin trim. (Jewelry not included.) (Two-Piece Set)





Ultra-flattering, western-styled off-the-shoulder dress with attached skirt and distressed leather-look lace-up waist corset. (Choker and petticoat not included.) (Two-Piece Set)

Style 11134

"Saloon Gal"

S, M, L, XL
1X, 2X, 3X



Style 11129

"Beautiful Native"

S, M, L, XL

Flattering V-front ultrasuede dress with Native American-influenced beaded neckline and fringe detail. Includes beaded headpiece with feathers. (Bow not included.) (Two-Piece Set)



Style 9189

"Chief Long Arrow"

M, L, XL, XXL

Ultra-suede fringed shirt and pants with feather headdress. (Three-Piece Set)







Styles 11566, 11574, 8909, 11156



Style 11156

"Scarecrow"

S, M, L, XL

Adorable off-the-shoulder button-front peasant dress with plaid patches and straw trim. This versatile costume can be worn with or without included Roxie short. Includes matching boot toppers, straw hat, rope choker, belt and wrist ties. (Seven-Piece Set)



Style 11574

"Heartless Hottie"

S, M, L, XL

Shimmering metallic silver stretch jumpsuit with padded shoulders, metal stud and screenprinted heart clock detailing. Also includes oil can headband. (Gloves, axe and wig not included.) (Two Piece Set)

(Shown With)
Style 9969
"Gauntlet Gloves"
O/S



Style 11627
"Mischief in Neverland"
XS, S, M, L, XL

Playful rich green velvet jagged edge dress with lace up neckline and button front skirt, opens to reveal included shorts. Costume also includes a hat with feather and belt. (Sword not included)
(Four-Piece Set)



Holographic-print stretch knit dress with corset-styled bodice, green rhinestone encrusted neckline appliqué and attached sparkly tutu bottom. Includes wand and fairy wings. (Earrings not included.)
(Three-Piece Set)

Style 9452
"Fairy-licious"
S, M, L, XL



Style 11590

"Queen of Hearts"

S, M, L, XL

This Exquisite Queen of Hearts costume is loaded with beautiful detailing! Black velvet bodysuit with embellished underwire cups and snap crotch has an attached heart printed sheer skirt and peplum. Also includes heart shaped collar, choker, sleeves and crown. (Scepter and stockings not included.) (Five-Piece Set)

(Shown With) Style 5218
"Luna Glove"
O/S



Style 11589

"Beyond Wonderland"

S, M, L, XL

Adorable storybook dress with underwire cups, ric rac trim and ruffled detailing. Also includes bow headband stocking topper bows, sleeves, and apron. (Stockings not included.) (Five-Piece Set)

(Shown With)
Style 11339 "Dip Dye Long Wig"
Ice Blue/Black
Adjustable

Style 10297

"Hatter Madness"
(Men's)

M, L, XL, XXL

Brown velvet jacket with uneven pockets and purple trim. Includes diamond-print vest with polka dot buttons and attached purple dickey with large bow tie, and oversized velvet hat. (Wig and pants not included.) (Three-Piece Set)

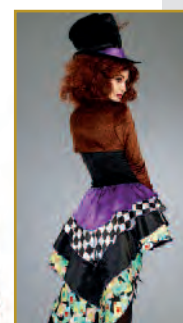


Style 11162

"Hatter Madness"
(Women's)

S, M, L, XL

Quirky, corset-styled dress with printed-satin layered high-low skirt. Includes stretch velvet shrug with printed bow tie, diamond printed stocking topper bow pins and over-sized velvet top hat with card and peacock feather. (Gloves, petticoat, and thigh highs not included.) (Four-Piece Set)



(Shown With)
Style 11163
"Full Curly Wig"
Auburn
Adjustable

Style 5218
"Luna Glove"
O/S

Style 10649

"White Rabbit"
(Men's)

M, L, XL, XXL

Velvet jacket with pocket watch appliqué, black-and-white checkered cuffs and black clock-printed vest with attached faux-fur dickey and black satin bow tie. Includes matching top hat with rabbit ears and fake pocket watch with chain fob. (Pants and gloves not included.) (Four-Piece Set)



Style 11161

"Magic Cat"

S, M, L, XL

Whimsical bright pink and purple striped panne velvet dress with attached tail and shaggy fur hood with cat ears. Includes fingerless gloves, choker and boot covers. (Wig not included.) (Three-Piece Set)





Style 11576

"Arabian Princess"

S, M, L, XL

This dazzling Arabian Princess costume includes an off-the-shoulder top with rhinestone embellishment and adjustable shoulder straps. Matching harem pants have a metallic gold print at hemline, and attached printed over skirt. Also includes headpiece.
(Jewelry not Included.)

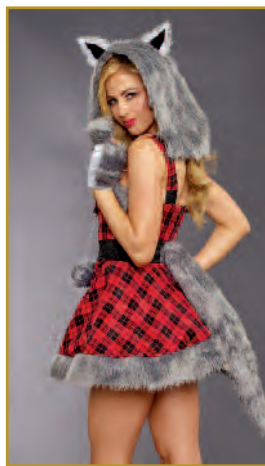


Captivating and ultra-comfortable costume includes Dhoti pants with gold printed velvet vest. Also includes faux brown leather hat with bobby pin loops, and belt. (Sword not included.)
(Four-Piece Set)

Style 11561

"Arabian Prince"

M, L, XL, XXL



Playful red plaid jumper dress with large front pocket and faux-fur trim. Includes shaggy faux-fur hood with wolf ears, matching fingerless gloves, and belt with attached furry tail.
(Four-Piece Set)

Style 11182

"Big Bad Wolf"
(Women's)

XS, S, M, L, XL



Style 9477

"Little Red"

S, M, L, XL
1X/2X, 3X/4X

Beautifully-detailed fairytale dress with underwire foam cups with pleated ruffles, embroidered heart trim, lace-trimmed apron and attached petticoat. Includes full-length hooded satin cape. (Basket, thigh highs, stocking bows and satin gloves not included.)
(Two-Piece Set)

(Shown With)
Style 10342
"Bow Top Stockings"
O/S,
O/S Queen

Style 5218
"Luna Gloves"
O/S



Style 9493

"Big Bad Wolf"
(Men's)

M, L, XL, XXL

Men's red and black check jagged-edge tunic with faux fur hood with wolf ears. Includes fingerless gloves.
(Pants not included.)
(Two-Piece Set)

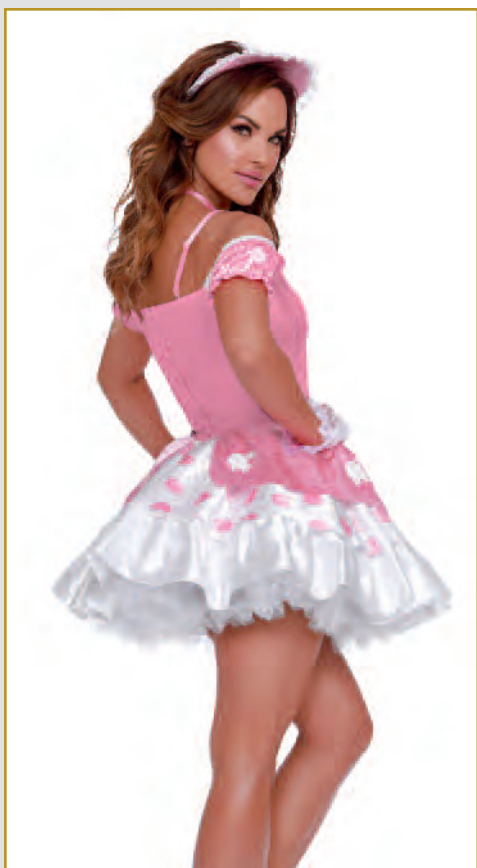


Style 11597

"Little Bo Peep"

S, M, L, XL

This darling Bo-Peep costume includes a full party dress with polka dot skirt, peplum with sheep print and bonnet headband. (Gloves, socks, choker, petticoat, and shepherds crook not included.) (Two-Piece Set)



Style 10298

"The Sultan"

M, L, XL, XXL

Exotic purple satin tunic with attached velvet vest with gold tassel braid. Includes gold sash, satin harem pants and jeweled turban. (Shoe covers and sword not included.) (Four-Piece Set)



Style 10671

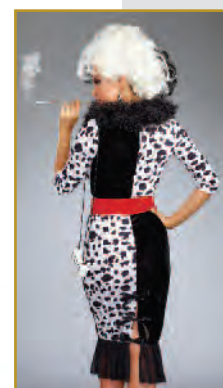
"Dalmatian Diva"

S, M, L, XL
1X, 2X, 3X

Dalmatian-print midi dress with front zipper, faux-fur collar and ribbon-tie back slit. Includes shiny vinyl belt and bone accessory. (Wig, jewelry and cigarette holder not included.) (Three-Piece Set)



(Shown With)
Style 10675
"Dalmatian Diva
Wig"
O/S



Style 10673

"Holy Ship!"
(Men's)

M, L, XL, XXL

Paisley-print pirate jacket with faux-leather trim and skull buttons. Includes white lace-up shirt and faux-leather head wrap. (Pirate hat, pants and sword not included.) (Three-Piece Set)

(Shown With)
Style 10800
"Pirate Hat"
(Men's)
O/S

Style 6379
"Men's Basic Pant"
M, L, XL, XXL



Style 10661

"Pirate Wench"

S, M, L, XL

Off-the-shoulder red lace dress with high-low ruffled hem. Includes lace-up waist corset. (Pirate hat not included.) (Two-Piece Set)



(Shown With)
Style 10799
"Pirate Hat"
(Women's)
O/S

Dreamgirl® Animal Instincts

Styles 11631





Style 11631

"Purr-fection"

S, M, L, XL

Animal printed velvet dress with oversized collar, front zipper, and fur trim. Also includes a cat ear headband, bow belt, gloves, and tail. (Jewelry not included.) (Five-Piece Set)



Style 11634

"Penguin Cutie"

XS, S, M, L, XL
1X, 2X, 3X

This charming penguin costume includes a fur trimmed dress with side flaps and oversized penguin hood. Also included with this costume are shoe covers and a fish belt. (Gloves not included.) (Three-Piece Set)



(Shown With)
Style 5218
"Luna Glove"
O/S





Style 11566

"Queen of the Jungle"

S, M, L, XL

This furry, fabulous costume includes a zip-front romper with over sized hood which can be worn with included fur trimmed skirt. Also includes fur trimmed gloves and tail. (Four-Piece Set)



Gold stretch velour sleeveless lion top with attached tail and faux-fur hood with ears. Includes matching fingerless gloves. (Pants not included.) (Two-Piece Set)

Style 11131

"King of the Jungle"

M, L, XL, XXL

Style 11564

"Wild Thing"

S, M, L, XL

Adorable, ultra-comfortable giraffe hoodie with front pocket. Also includes fun elastic waist pants and tail. (Three-Piece Set)



Style 11641

"Playful Panda"

S, M, L, XL

This playful, adorable costume includes an ultra-comfortable fur-trimmed dress, with a large oversized panda hood. Also includes paw printed gloves and boot covers. (Three-Piece Set)



Style 10624

"Dalmatian Darling"

S, M, L, XL

Dalmatian-print, stretch, crushed velvet dress with hood, faux-fur trim and tail. Includes matching boot covers and dog-collar choker. (Three-Piece Set)



Style 9959

"Cat Fight"

S, M, L, XL

Metallic black, stretchy, zip-front jumpsuit with ripped front pant leg detailing and attached tail. Includes headpiece with mask and belt. (Whip and jewelry not included.) (Three-Piece Set)



Style 11175

"On The Hunt"

M, L, XL, XXL

Hunting vest with bullet strip and "On The Hunt" patch. Includes camouflage top and matching hat. (Rifle not included.) (Two-Piece Set)

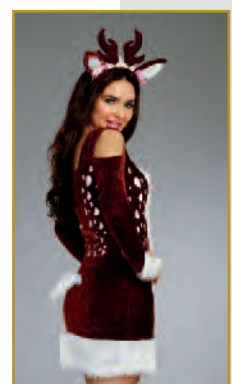


Style 11174

"Deer Me!"

S, M, L, XL
1X, 2X, 3X

Adorable brown-spotted stretch panne velvet cold-shoulder dress with faux-fur detailing and removable tail. Includes antler headband with daisy trim and boot covers. (Four-Piece Set)



Styles 11625





Style 11625

"Ms. Claus"

XS, S, M, L, XL

Festive and fun stretch velvet red jumpsuit with fur trim and oversized hood has an adorable candy cane zipper pull. Also includes belt and fur boot toppers. (Candy Cane and gloves not included.) (Three-Piece Set)

(Shown With)
Style 5218
"Luna Glove"
O/S

Style 11645

"Lucky You"

M, L, XL, XXL

Get lucky in this leprechaun costume that includes a satin vest, collar with bow tie, oversized Leprechaun's hat with buckle and suspenders. (Pants not included) (Four-Piece Set)





Stretch-knit, strapless dress with attached belt, felt clover detail skirt and puff arm sleeves. Includes hat, pot-of-gold bag and riding crop. (Thigh highs not included.)
(Six-Piece Set)

Style 5199

"Spank Me I'm Irish"

S, M, L

(Shown With) Style 10342
"Bow Top Stockings"
O/S, O/S Queen



Style 8870

"Santa Baby"

S, M, L, XL

Sexy Santa wants to make all your wishes come true! Spread some Yuletide cheer in this exquisite red velvet holiday dress with faux fur trim, long sleeve shrug, belt, bell stocking toppers and Santa's hat! Red stretch crush velvet dress with faux fur trim at neckline and hem. Includes matching long sleeve shrug, belt, jingle bell stocking toppers and Santa's hat. Thigh highs and gloves not included)
(5 piece set)

(Shown With)
Style 7031
"Sheer Thigh Highs
with Back Seam"
O/S



Style 6540

"Miss Liberty"

S, M, L, XL

Stretch-knit, faux-wrap dress with side shirring detail. Includes headpiece and light-up torch with battery.
(Three-Piece Set)

Dreamgirl®

Plus Costumes

Style 11636X

"The Black Widow"

S, M, L, XL
1X, 2X, 3X

This captivating costume includes a sleek, strappy off-the-shoulder gown with jewel encrusted spider, a high scalloped slit, and an attached spider web cape. (Jewelry and headpiece not included.) (One-Piece Set)

(Shown With)
Style 11636
"Spider Headpiece" O/S





Style 10669X

"Gypsy"

S, M, L, XL
1X, 2X, 3X

Peasant-style dress with velvet lace-up bodice, gold trim, multi-tiered handkerchief skirt with paisley print and gold coin detailing. Includes matching head wrap with gold coin trim. (Jewelry and tarot cards not included.) (Two-Piece Set)



Exquisite midnight blue velvet gown with attached sparkling silver mystical-print sheer cape. Includes shimmering rhinestone headpiece. (Scepter not included.) (Two-Piece Set)

Style 11149X

"The Sorceress"

S, M, L, XL
1X, 2X, 3X



Style 11545X

"Miss Ritz"

S, M, L, XL
1X, 2X, 3X

Exquisite rich purple flapper dress with off-the-shoulder fringe sleeves and back zipper. Includes sequin headpiece with ostrich feather. (Gloves, cigarette holder, and jewelry not included.)
(Two-Piece Set)

(Shown With) Style 5218
"Luna Glove"
O/S



Elegant, burgundy stretch velvet dress with authentic 1920's elaborately beaded trims, fringe hem and sequin detailing. Includes stretch sequin headpiece with ostrich feather. (Gloves, jewelry and cigarette holder and boa not included.)
(Two-Piece Set)

(Shown With) Style 5218
"Luna Glove"
O/S

Style 11102X

"Million Dollar Baby"

S, M, L, XL
1X, 2X, 3X



Style 10210X

"Downton Doll"

S, M, L, XL
1X/2X, 3X/4X

Have a rip-roaring time in this 1920's inspired beautiful flapper costume! You'll dazzle them all, coming and going, in this deco-design printed velvet dress with embellished neckline. Sequin fringe hemline and matching headpiece with ostrich feather complete this fabulous look. Couple with Dreamgirl's Party At Gatsby's for a night to remember! Exquisite midnight blue embossed stretch velvet dress with jeweled neckline and sequin fringe trim. Includes jeweled headpiece with ostrich feather.

(Shown With) Style 5218
"Luna Glove"
O/S



1920's-inspired dress with off-the-shoulder fringe detail and gold intricately-embroidered neckline & hemline trim. Includes gold sequined headpiece with ostrich feather. (Gloves, boa, jewelry and cigarette holder not included.) (Two-Piece Set)

Style 10700X

"Swanky Flapper"

S, M, L, XL
1X, 2X, 3X

(Shown With) Style 5218
"Luna Glove"
O/S



Style 11180X
"Angel of Darkness"

S, M, L, XL
1X, 2X, 3X

Radiant black dress with exquisite neckline appliqué, sequin trim and hi-low hemline skirt with layers of glittered feather-shaped petals. Includes black feather angel wings and sequin halo headband.
(Gloves not included.)
(Three-Piece Set)

(Shown With)
Style 10341 "Midnight Madness
Gloves"
O/S



Hauntingly beautiful vampire dress with rhinestone encrusted bleeding heart design and hi-low scalloped hemline. Removable cape has adjustable straps and vampire collar. (Headpiece and gloves not included.)
(Two-Piece Set)

(Shown With)
Style 5218
"Luna Glove" O/S

Style 11577X
"Drop Dead Beautiful"

S, M, L, XL
1X, 2X, 3X

(Shown With)
Style 11657
"Drop Dead Beautiful Headpiece" O/S



Flirty sugar skull dress with ruffled neckline, brightly-colored skeleton screen print, satin ribbon belt at waist and multi-tiered skirt with sugar skull detailing. Includes beaded cross necklace. (Headpiece and gloves not included.)
(Three-Piece Set)

(Shown With) Style 10341
"Midnight Madness
Gloves"
O/S

Style 10680X

"Lady of The Dead"

S, M, L, XL
1X, 2X, 3X



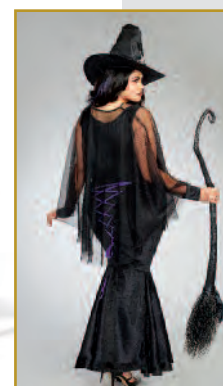
Style 11151X

"Bewitching Beauty"

S, M, L, XL
1X, 2X, 3X

Bewitching black velvet gown with metal neckline closures and strategically placed purple lace-up back detailing. Includes belt, sheer jacket and witch hat with spider. (Broom not included.)
(Four-Piece Set)

(Shown With) Style 11397
"Long Curly Ombre
Three-Piece Hair
Extension" Gun Metal/
Lavender Lilac
O/S



Style 10639X

"Frightfully Beautiful"

S, M, L, XL
1X, 2X, 3X

Spooky, luxe black velvet gown with sequin-appliqué bodice, lace paneling in skirt and lace waterfall sleeves. (Rose and jewelry not included.)
(One-Piece Set)



Style 11583X

"Medieval Maiden"

S, M, L, XL
1X, 2X, 3X

Simply stunning rich velvet gown with exquisitely sequined embellished front bodice and gold satin trim. Also includes headpiece with veil. (Jewelry not included.) (Two-Piece Set)



Groovy starburst tie-dye dress and faux-suede fringe vest with removable "Flower Power" and "Peace" pins. Includes head tie, sunglasses, arm tie and peace sign necklace. (Bracelet not included.) (Eight-Piece Set)

Style 11171X

"Hippie Hottie"

S, M, L, XL
1X, 2X, 3X



Ultra-flattering, western-styled off-the-shoulder mini floral dress with attached skirt and distressed leather-look lace-up waist corset. (Choker and petticoat not included.) (Two-Piece Set)

(Shown With) Style 7034
"Fishnet Pantyhose"
O/S Fishnet
Pantyhose with back seam.
(One-Piece Set)

Style 11134X

"Saloon Gal"

S, M, L, XL
1X, 2X, 3X



Style 11106X

"Disco Diva"

S, M, L, XL
1X, 2X, 3X

Foxy black knit dress with metallic holographic disco dot, sweetheart neckline and side slit. Includes stretch pink sequin belt and disco ball necklace. (Additional jewelry not included.) (Three-Piece Set)



Style 10290X

"Exquisite Cleopatra"

S, M, L, XL
1X/2X, 3X/4X

Exquisite velvet gown with Egyptian pattern, front slits and gold trim detailing. Includes Egyptian collar and belt. (Jewelry and headpiece not included.) (Three-Piece Set)

(Shown With)
Style 9518
"Snake Crown"
O/S



Style 11634X

"Penguin Cutie"

XS, S, M, L, XL
1X, 2X, 3X

This charming penguin costume includes a fur trimmed dress with side flaps and oversized penguin hood. Also included with this costume are shoe covers and a fish belt. (Gloves not included.) (Three-Piece Set)

(Shown With) Style 5218
"Luna Glove"
O/S



Style 11174X

"Deer Me"

S, M, L, XL
1X, 2X, 3X

Adorable brown-spotted stretch panne velvet cold-shoulder dress with faux-fur detailing and removable tail. Includes antler headband with daisy trim and boot covers. (Four-Piece Set)



Darling dragon costume includes a reptile printed dress with sheer webbed sleeves. Also includes long dragon headpiece with attached tail. (Wig, gloves and stockings not included.) (Two-Piece Set)

Style 11563X

"Magic Dragon"

S, M, L, XL
1X, 2X, 3X

(Shown With) Style 5218
"Luna Glove"
O/S



Style 9477X

"Little Red"

S, M, L, XL
1X/2X, 3X/4X

Beautifully-detailed fairytale dress with underwire foam cups with pleated ruffles, embroidered heart trim and lace-trimmed apron. Includes full-length, hooded, satin cape. (Basket, thigh highs and satin gloves not included.) (Two-Piece Set)

(Shown With)
Style 10342X
"Bow Top Stockings"
O/S, O/S Queen

Style 5218
"Luna Gloves"
O/S



Style 10671X

"Dalmatian Diva"

S, M, L, XL
1X, 2X, 3X

Dalmatian-print midi-dress with front zipper, faux-fur collar and ribbon-tie back slit. Includes shiny vinyl belt and bone accessory. (Wig, jewelry and cigarette holder not included.) (Three-Piece Set)

(Shown With)
Style 10675
"Dalmatian Diva
Wig" O/S





Style 11581X

"Tackle"

S, M, L, XL
1X, 2X, 3X

Playful football jersey with zip sides and matching shorts with athletic detailing. Also includes athletic socks. (Football and bra top not included) (Three-Piece Set)



This flirty maid's costume includes an adorable black dress with white ruffled detailing. Also includes ruffled headpiece, and apron. (Gloves, stockings and feather duster not included.) (Three-Piece Set)

Style 11639X

"Keep It Clean"

S, M, L, XL
1X, 2X, 3X



Stretch-knit, snap-front dress with sequin embroidered "Grand Slam" appliqué and heat transfer number "10" detail on back. Includes stretch-knit short with elastic waist, baseball cap and athletic knee high socks. (Earrings not included.) (Four-Piece Set)

Style 6469X

"Grand Slam"

S, M, L, XL
1X/2X, 3X/4X



Style 10284X

"All Aboard"

S, M, L, XL
1X/2X, 3X/4X

Adorable, retro-styled dress with sailor collar, sequin anchors and full circle skirt. Includes matching sailor hat. (Two-Piece Set)



Style A9981X

"S.W.A.T. Police"

S, M, L, XL
1X/2X, 3X/4X

Black knit dress with front zipper and "S.W.A.T. Police" screen print on back. Includes hat and police badge. (Baton and sunglasses not included.) (Three-Piece Set)

Dreamgirl[®] Accessories



Styles 11655, 4575,
11192, 11657



Style 11655
"Vampire Bat Dress"

S/M, M/L

Chic black sheer long sleeve dress
with vampire bat motif.
(Bra top not included)

(Shown With)
Style 4575 "Roxie Hot Short"
Black, White
S/M, M/L, 1X/2X, 3X/4X



Gothic-inspired black lace hooded cape
with ribbon-tie front closure.
(One-Piece Set)

(Shown With)
Style 11151
"Bewitching Beauty"
S, M, L, XL

Style 11192

"Lace Cape"

Black, Red

O/S

128



Style 11657

"Drop Dead Beautiful Headpiece"

O/S

Hauntingly beautiful headpiece with black roses, rhinestone embellishment and chain detailing. (One-Piece Set)



Style 11651

"Mystical Ram's Horn Headpiece"

O/S

Ram's Horn headpiece with black roses, rhinestones and chain detailing. (One-Piece Set)



Style 11659

"Spider Headpiece"

O/S

Spooky-licious spider headpiece with large spider with black rhinestone eyes and veil. (One-Piece Set)



Style 11194

"Gothic Headpiece"

O/S

Headpiece with red & black flowers, skulls and attached black tulle veil. (One-Piece Set)

(Shown With) Style 11324
"Long Straight Ombré Wig"
Ombré Wig, Adjustable



Black opera length
fingerless gloves with deep
red lace insets and flower & skull trim.
(One-Piece Set)

Style 11193

"Spooky-licious
Gloves"

O/S



Rich black velvet cape with rose detail and velcro closure.
(One-Piece Set)

Style 11551

"Vamp Cape"

O/S

(Shown With)
Style 11151
"Bewitching Beauty"
S,M,L,XL

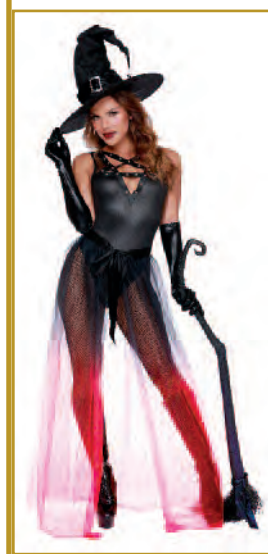


Sheer tulle maxi skirt with satin
waistband and tie closure.
(One-Piece Set)

Style 10831

"Sheer Tie-Front Skirt"

S/M, M/L



Ombre open-front skirt with
ribbon waist band front closure.
(One-Piece Set)

Style 11646

"Ombre Skirt"

S/M, M/L

Mystic Mermaids



Styles 11188,
11187,11191,11185

Style 11188

"Mermaid Headpiece"

O/S

Shimmering mermaid headpiece with stretch sequin band, sequin fringe and faux shell, starfish, pearl and rhinestone details. (One-Piece Set)

(Shown With)
Style 11382
"Long Wavy Ombré Wig with Halo Braids"
Light Pink/White
Adjustable

Style 11186

"Mermaid Bra"

S/M, M/L

Shell-shaped underwire foam cup bra with star fish sequin appliqué and draped faux-pearl detailing. (One-Piece Set)

Style 11185

"Mermaid Skirt"

S/M, M/L

Brilliant blue holographic-print mermaid skirt with three strands of faux-pearls, contrast fish tail and back slit. (One-Piece Set)



Brilliant blue bodysuit with strategically-placed metallic foil-printed shells, adjustable straps and snap-crotch closure. (One-Piece Set)

Style 11187

"Mermaid Bodysuit"

S/M, M/L

(Shown With) Style 11382
"Long Wavy Ombré Wig with Halo Braids"
Light Pink/White, Adjustable



Shimmering white open-front holographic sheer skirt with ribbon waist band and tie-front closure. (One-Piece Set)

Style 11191

"Iridescent Sparkly Skirt"

S/M, M/L

Unicorn Fantasies



Styles: 11199,12209,12203



Shimmering iridescent bodysuit with snap-crotch closure.
(One-Piece Set)

Style 12209
"Iridescent BodySuit"

*Pair with Dreamgirl's "Iridescent Sparkly Sheer Skirt" to
complete your fantastic look*

S/M, M/L



Mystical headpiece with flowers, silver stars
and unicorn horn & ears.
(One-Piece Set)

Style 11199
"Unicorn Headpiece"
O/S



Multi-layered sparkly skirt with tie-front
closure and high-low hemline.
(One-Piece Set)



Style 12203
"Beauty-licious Skirt"

S/M, M/L

Top It Off



Styles: 11648, 11649,
11647, 6045, 10831



Versatile black tie front top with lace sleeves.
(One-Piece Set)

Style 11647

"Lacy Top"

S/M, M/L



Multi-color disco dot tie front top with bell sleeve.
(One-Piece Set)

Style 11648

"Disco Mania Top"

S/M, M/L



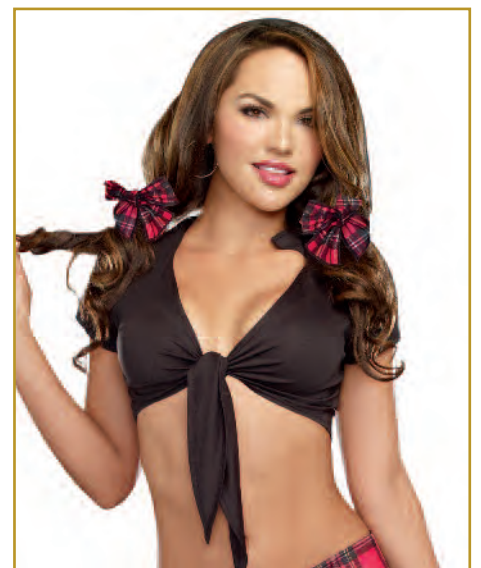
Style 8355

"All Tied Up"

Black, White

S/M, M/L

Stretch-knit, plunging-neckline
shirt with cap sleeve. Great starter shirt
for many costume ideas.
(One-Piece Set)





Style 8358
"Pretty N' Peasant"
Black, Red, White

Sexy off-the-shoulder knit top with elastic ruffled detail and bow accent. Great starter top for many costume ideas.
(One-Piece Set)

S/M, M/L



Style 8947
"Ho Garden Top"
S/M, M/L

Off-the-shoulder stretch knit top with blousy shirring and satin bow detail on neckline.
(One-Piece Set)



Style 11186
"Mermaid Bra"
S/M, M/L

Shell-shaped underwire foam cup bra with star fish sequin applique and draped faux-pearl detailing.
(One-Piece Set)

Style 11654

"Webbed Bodysuit"

S/M, M/L

Purple bodysuit with fun spider web screen print, high neckline and snap-crotch closure. (One-Piece Set)

(Shown With)
Style 11636
"Spider Headpiece"
O/S

(Shown With)
Style 5218
"Luna Glove"
O/S





Style 11653

"Wicked Bodysuit"

S/M, M/L

Wicked shimmering black bodysuit with cut out shoulder and neckline detailing has snap-crotch closure. (One-Piece Set)



Style 11652

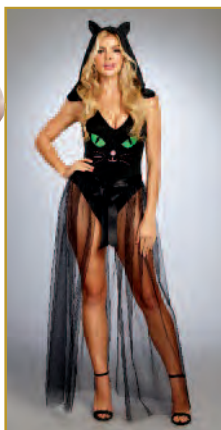
"Trick or Treat Bodysuit"

S/M, M/L

Chic black bodysuit with sheer long sleeves and Trick or Treat Screen print with snap-crotch closure. (One-Piece Set)



GLOWS IN THE DARK



Hooded bodysuit with cat face screen print with glow-in-the-dark eyes and snap-crotch closure. (One-Piece Set)

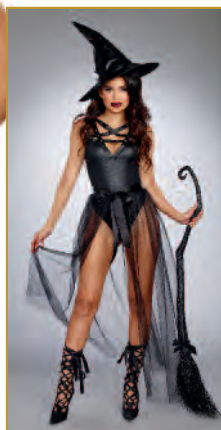
Style 10829
"Pretty Kitty Bodysuit"

S/M, M/L

Pair with Dreamgirl's "Sheer Tie-Front Skirt" to complete your purr-fect look.



Black bodysuit with studded pentagram neckline and snap-crotch closure. (One-Piece Set)



Style 10830
"Evilicious Bodysuit"

S/M, M/L

Pair with Dreamgirl's "Sheer Tie-Front Skirt" to complete your wicked look.

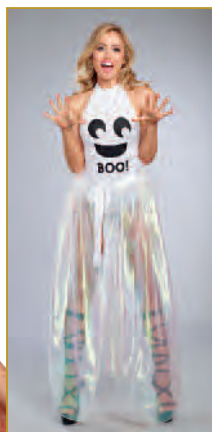


White bodysuit with ghost-face screen print, halter neckline and snap-crotch closure. (One-Piece Set)

Style 12212
"Boo-dy Suit"

S/M, M/L

Pair with Dreamgirl's "Iridescent Sparkly Sheer Skirt" to complete your spooky look.



GLOWS IN THE DARK

Fun black bodysuit with glow-in-the-dark Jack-o'-lantern face, strappy neckline and snap-crotch closure. (One-Piece Set)



Style 12211
"Halloween Hottie Bodysuit"

S/M, M/L

Pair with Dreamgirl's "Sheer Tie-Front Skirt" to complete your spirited look.



Style 12209

"Iridescent Body Suit"

S/M, M/L

Shimmering iridescent bodysuit with snap-crotch closure.
(One-Piece Set)



Style 12204

"Rose Gold Bodysuit"

S/M, M/L

Shimmering stretch velour bodysuit with gold
sparkle print and snap-crotch closure.
(One-Piece Set)



Style 11187

"Mermaid Bodysuit"

S/M, M/L

Brilliant blue bodysuit with strategically-placed metallic
foil-printed shells, adjustable straps and snap-crotch closure.
(One-Piece Set)

(Shown With) Style 11382
"Long Wavy Ombré Wig with Halo Braids"
Light Pink/White, Adjustable



Style 12205

"Galaxy Bodysuit"

S/M, M/L

Out-of-this-world navy-blue bodysuit with
silver foil galaxy screen print and snap-crotch closure.
(One-Piece Set)

Shown With) Style 11317
"Hidden Rainbow"
White/Neon Rainbow, Adjustable



This leopard printed mesh jumpsuit is the purr-fect layering piece!
(One-Piece Set)

Style 11599

"Bad Kitty
Body stocking"

S/M, M/L



Glossy, stretch-knit unitard can be used to
create many different costumes.
(One-Piece Set)

Style 9558

"Liquid Unitard"

S/M, M/L



Cotton/Spandex adjustable-strap unitard.
(One-Piece Set)

Style 0072

"Basic Unitard"

S/M, M/L
1X/2X, 3X/4X



Style 10336

"Romper Starter"

S/M, M/L

Black romper is a great layering piece for many costumes.
(One-Piece Set)



Style 6045

"Liquid Legging"
S/M, M/L

Glossy, stretch-knit
legging.
(One-Piece Set)



Style 11649

"Dancing Queen Pants"

S/M, M/ L

Shimmering black disco pants with disco dot print
bell bottoms. (One-Piece Set)

Style 4575

"Roxie Hot Short"
Black, White

S/M, M/L
1X/2X, 3X/4X

Basic stretch-knit hot short
with elastic waist.
(One-Piece Set)



Style 9605

"Men's Disco Pant"

M, L, XL, XXL

Men's polyester flare-legged
disco pants with shiny foil
dot at hem. Elastic-back
waist allows for adjustability.
(One-Piece Set)



Style 6379

"Men's Basic Pant"
Black

M, L, XL, XXL

Men's basic pant with elastic
waistband and pockets.
(One-Piece Set)



Style 9994

"Liquid Roxie Short"
S/M, M/L

Glossy, stretch-knit hot
short with elastic waist.
(One-Piece Set)





Style 11650

"Unicorn Headpiece"

O/S

Mystical black unicorn headpiece with roses, chains and rhinestone trim.
(One-Piece Set)



Style 11659

"Spider Headpiece"

O/S

Spooky-licious spider headpiece with large spider with black rhinestone eyes and veil.
(One-Piece Set)



Style 11657

"Drop Dead Beautiful Headpiece"

O/S

Hauntingly beautiful headpiece with black roses, rhinestone embellishment and chain detailing.
(One-Piece Set)



Style 11651

"Mystical Ram's Horn Headpiece"

O/S

Ram's Horn headpiece with black roses, rhinestones and chain detailing.
(One-Piece Set)



Exquisite gold Cleopatra headpiece with Cobra, turquoise rhinestone embellishment and gold beads. (One-Piece Set) (Egyptian/Cape Collar not included)

(Shown With)
Style 11588
"Cleopatra"
S, M, L, XL

Style 11656
"Cleopatra Headpiece"

O/S



Black velvet and gold satin ribbon Egyptian headpiece. (Cape/collar and necklace not included.) (One-Piece Set)

Style 10329
"Pharaoh Headpiece"

O/S



Golden headpiece with cascading rhinestones and adjustable back. (One-Piece Set)

Style 9515
"Shimmer Rhinestone Headpiece"

Gold/Black, Gold/Crystal
O/S



Gold metal crown with coins. (Earrings not included.) (One-Piece Set)

Style 9523
"Shimmering Gold Coin Crown"

O/S



Style 11188

"Mermaid Headpiece"

O/S

Shimmering mermaid headpiece with stretch sequin band, sequin fringe and faux shell, starfish, pearl and rhinestone details. (One-Piece Set)



Style 11199

"Unicorn Headpiece"

O/S

Mystical headpiece with flowers, silver stars and unicorn horn & ears. (One-Piece Set)



Style 9516

"Dripping Rubies Headpiece"

O/S

Magnificent gold headpiece dripping in rubies and gold coins. (Necklace not included.) (One-Piece Set)



Style 9520

"Glittering Rhinestone Headpiece"

O/S

Exquisite rhinestone headpiece has clips on either side for attaching to hair. (One-Piece Set)



Headpiece with red & black flowers, skulls and attached black tulle veil.
(One-Piece Set)

Style 11194

"Gothic Headpiece"

O/S

(Shown With) Style 11324
"Long Straight Ombre Wig"
Ombre Wig Adjustable



Style 10799

"Pirate Hat"
(Women's)

O/S

Large velvet pirate hat with gold trim, satin bows and lace detail.
(One-Piece Set)



Style 10800

"Pirate Hat"
(Men's)

O/S

Men's tricorn hat with attached headwrap and synthetic dreadlocks.
(One-Piece Set)



Headband with roses and black lace veil.
(Jewelry not included.)
(One-Piece Set)

Style 10003

"Day of the Dead Headpiece"

O/S



Style 9514

"Flapper Headpiece"

O/S

Black stretch sequin headpiece with 1920's-inspired appliqué and beading.
(One-Piece Set)

Style 8909

"Blue Gingham Dress"

S, M, L, XL

Blue and white checked dress with white chiffon sleeves. (Thigh highs, hair bows, petticoat, dog and basket not included.)
(One-Piece Set)



Style 8910

"Cave Girl"

S, M, L, XL

One-shoulder, animal-print, brushed-knit dress. (Bone barrette not included.)
(One-Piece Set)



Style 5832

"Basic Dress"
Black

S, M, L, XL

Stretch microfiber dress with internal stretch bra. Add costume accessories to this dress to create many different costume options.
(One-Piece Set)



Style 11655

"Vampire Bat Dress"
Black

S/M, M/L

Chic black sheer long sleeve dress with bat motif and high neckline.
(One-Piece Set)



Style 8912

"Flapper"
Black, Red

S, M, L, XL

Full fringe dress with adjustable shoulder straps. (Jewelry and fishnet pantyhose not included.)
(One-Piece Set)



Style 11646

"Ombre Skirt"

S/M, M/L

Ombre open-front skirt with ribbon waist band front closure.
(One-Piece Set)



Style 12203

"Beauty-licious Skirt"

S/M, M/L

Multi-layered sparkly skirt with tie-front closure and high-low hemline.
(One-Piece Set)



Style 10831

"Sheer Tie-Front Skirt"

S/M, M/L

Sheer tulle maxi skirt with satin waistband and tie closure.
(One-Piece Set)



Style 12202

"Rose Gold Skirt"

S/M, M/L

Beautiful rose-colored multi-layered skirt with gold foil over print, tie-front closure and high-low hemline.
(One-Piece Set)

Reversible

Style 6586

"Schoolgirl/Gangster
Skirt"
S, M, L, XL

Pleated, reversible
plaid
Schoolgirl/Gangster
pinstripe skirt.
(Top not included.)
(One-Piece Set)



Style 9544

"Ruffled Skirt"
S, M, L, XL

Black satin multi-layered
ruffled skirt with side
zipper can be used to
create many different
costumes.
(One-Piece Set)





Style 7819
"Dominique Glove"
O/S

Shiny, stretch-knit, opera-length gloves.
(One-Piece Set)



Style 9969
"Gauntlet Gloves"
O/S

Silver fingerless gloves.
(One-Piece Set)



Style 9971
"Galaxy Gun"
O/S

Silver galaxy gun with lights and sound. Requires
AA batteries. (Batteries not included.)
(One-Piece Set)



Style 9970
"Galaxy Glasses"
O/S

Silver plastic co-ed sunglasses.
(One-Piece Set)



Black opera length fingerless gloves with deep red lace insets and flower & skull trim.
(One-Piece Set)

Style 11193

"Spooky-licious
Gloves"

O/S



Black opera-length fingerless gauntlet gloves with black lace design.
(One-Piece Set)

Style 10341

"Midnight Madness
Gloves"

O/S



Style 5218

"Luna Glove"

Black, White

O/S



Stretch satin opera-length gloves.
(One-Piece Set)



Style 7030

Sheer thigh highs with stay-up silicone lace top.
(One-Piece Set)

"Sheer Thigh Highs"

Black, White

O/S, O/S Queen



Style 10342

Sheer thigh-high stockings with
two sets of bows with pins.
(One-Piece Set)

"Bow Top Stockings"

Black, White

O/S, O/S Queen



Style 7031

Sheer thigh highs with back seam.
(One-Piece Set)

"Sheer Thigh Highs
with Back Seam"

Black, Red, White

O/S



Fishnet pantyhose with back seam.
(One-Piece Set)

Style 7034
"Fishnet Pantyhose"
O/S



Raw-top, diamond-net thigh-high stockings.
(One-Piece Set)
(shorts with garters not included)

Style 0215H
"Fishnet Raw
Top Stockings"
O/S



Sheer nude pantyhose with black opaque
knitted lace-up boot design. Pantyhose can
be worn with lace-up detail in the front or in the back.
(One-Piece Set)

Style 0220H
"Lace-Up Boot
Pantyhose"
O/S



Sheer pantyhose with opaque knitted
garters and thigh high stocking details.
(One-Piece Set)

Style 0217H
"Sheer Pantyhose with
Garters"
O/S

Style 7007

"Tutu Petticoat"

Black, White

O/S

Multi-layered tulle tutu
petticoat with
elastic waistband.
(One-Piece Set)



Style 8964

"Fairytale Petticoat"

Black, White

O/S

Multi-layered sheer mesh
petticoat with
high-low hemline, satin
ribbon edging
and back bow.
(One-Piece Set)



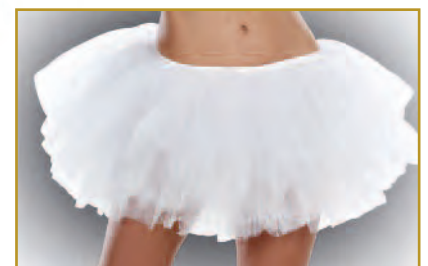
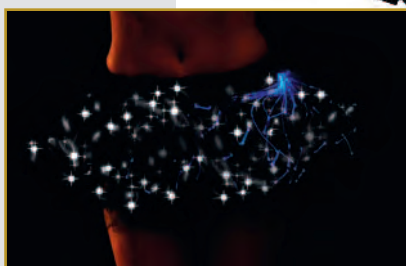
Style 7846

"Light-Up Tutu"

Black, White

O/S











Light-up tutu interlaced with
fiber optic lights
with hidden pocket for
on/off switch. Batteries and
instructions included.
(One-Piece Set)



Dream Deals



Styles 10217, 10221

<p>Style 9873</p> <p>"The Assassin" (Women's)</p> <p>S, M, L, XL</p> <p>Hooded black leather-look dress with attached chiffon cape and embellished neckline piece. Includes fingerless gloves with knives, belt, mask and battle axe weapon. (Six-Piece Set)</p>		<p>Style 9874</p> <p>"The Assassin" (Men's)</p> <p>M, L, XL, XXL</p> <p>Hooded black leather-look tunic. Includes belt with loop for weapon, battle axe weapon and wrist gauntlets. (Pants not included.) (Four-Piece Set)</p>	
<p>Style 10222</p> <p>"Voracious Viking" (Women's)</p> <p>S, M, L, XL</p> <p>Rich brown faux-leather dress with gold Celtic trim, dragon screen print and foam underwire cups with faux-fur detailing. Includes faux-fur capelet and wrist gauntlets. (Sword and helmet not included.) (Three-Piece Set)</p>		<p>Style 10223</p> <p>"Voracious Viking" (Men's)</p> <p>M, L, XL, XXL</p> <p>Tan faux-leather tunic with Celtic belt, dragon screen print and trim. Includes long cape with faux-fur collar. (Shield, pants and sword not included.) (Three-Piece Set)</p>	
<p>Style 10656</p> <p>"Groovy Baby!" (Women's)</p> <p>S, M, L, XL</p> <p>Bright, floral-printed jumpsuit with mesh waistline detail. Includes peace sign earrings and hair ribbon. (Three-Piece Set)</p>		<p>Style 10751</p> <p>"Groovy Baby!" (Men's)</p> <p>M, L, XL, XXL</p> <p>Bright, floral-printed tunic. (Pants, necklace and glasses not included.) (One-Piece Set)</p>	
<p>Style 10644</p> <p>"Anchors Away!"</p> <p>S, M, L, XL</p> <p>Pinup-inspired sailor jumpsuit with anchor buttons, sequined anchor appliqué and sailor collar with sequined stars and stripes details. Includes captain's hat and belt with gold anchor detail. (Jewelry not included.) (Three-Piece Set)</p>		<p>Style 10282</p> <p>"Ship Happens"</p> <p>M, L, XL, XXL</p> <p>Sailor shirt with official-looking combat ribbon and patches. Includes sailor hat. (Pants not included.) (Two-Piece Set)</p>	
<p>Style 9861</p> <p>"Sailor's Delight"</p> <p>S, M, L, XL</p> <p>Sailor dress with underwire foam cups, attached sailor collar, hidden detachable halter shoulder strap, and attached/adjustable garters with silver metal anchors. Includes belt with sequin anchor appliques, sailor hat and wrist cuffs. (Earrings, bow toppers and thigh highs not included.) (Five-Piece Set)</p>		<p>Style A9984</p> <p>"Just Cruisin"</p> <p>S, M, L, XL</p> <p>Navy and white satin polka dot romper with red sequin detailing and anchor appliqué. Includes sailor hat. (Earrings not included.) (Two-Piece Set)</p>	

Dream Deals

Dream Deals

Dream Deals

Style 9828

"Native Princess"

S, M, L, XL



Tan ultra-suede dress with Native American inspired beading and high-low fringed hemline. Includes beaded headpiece and belt. (Tomahawk not included.) (Three-Piece Set)

Style A8918

"Native Beauty"

S, M, L, XL



Ultra-suede dress with Native American trim, attached belt and matching head-piece. (Spear not included.) (Two-Piece Set)

Style 9832

"Buck Wild"

M, L, XL, XXL



Western style black suede, fringed jacket. Includes cowboy hat, bandana and vest. (Shirt, belt, pants and boots not included.) (Four-Piece Set)

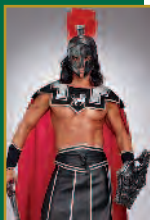
Style 10217

"Battle Beast"

M, L, XL, XXL



Be ready for battle with this fierce warrior costume. Includes embellished, padded collar with attached cape, tunic, and faux leather warrior skirt. Also includes wrist gauntlets. (Helmet and Sword not included) (Four-Piece Set)



Style 10635

"Holy Ship!"
(Women's)

S, M, L, XL



Flirty ruffled lace dress with lace-up neck detail and black faux-leather belt. Includes velvet jacket with gold trim, pirate buttons and gold skull shoulder epaulets. (Pirate hat, sword and garter not included.) (Three-Piece Set)

Style 11164

"Ruby Red Flapper"

S, M, L, XL



Beautiful red imprinted-velvet dress with ruby rhinestone neckline trim and black sequin fringe. Includes black sequin headpiece with ruby rhinestones, fringe and ostrich feather. (Gloves, cigarette holder, earrings and boa not included.) (Two-Piece Set)

Style 10221

"Battle Beast
Helmet"

O/S



Authentic-looking lightweight Roman gladiator helmet with feather trim. (One-Piece Set)

Style 10647

"Dying To Marry"

S, M, L, XL



Gray tattered gown with ribcage screen print, underwire bodice, skull lace sleeves and full tulle and satin skirt. Includes flower headpiece with attached veil. (Wig and jewelry not included.) (Two-Piece Set)

Style 10005

"Ms. Bones Hat"

O/S



Black top hat with skeletons and attached long tulle veil. (Jewelry not included.) (One-Piece Set)



Style 11577



Dreamgirl

The images and graphics in this catalogue
[or CD] are the copyright-protected work of DG Brands
International. Any use or reproduction without the express
written consent of DG Brands is strictly prohibited.
Violators will be prosecuted to the fullest extent of the law.

COPYRIGHT © MMXVIII