

正規販売代理店

Lady Cat

by Cat Fish Club

<http://www.ladycat.com>

service@ladycat.com

TEL 0798-31-7830



Dreamgirl[®]

2018/2019 FALL/HOLIDAY/VALENTINE'S COLLECTION



STYLE 11268



Stretch satin and scalloped stretch lace underwire garter slip with velvet waistband detail. Garment includes adjustable Euro straps, adjustable hook & eye back closure and removable/adjustable garter straps. Matching G-string included.

STYLE 11268
EVERGREEN

S, M, L, XL



Stretch satin and scalloped stretch lace underwire garter slip with velvet waistband detail. Garment includes adjustable Euro straps, adjustable hook & eye back closure and removable/adjustable garter straps. Matching G-string included.

STYLE 11268X
EVERGREEN

1X, 2X, 3X



Stretch satin and scalloped stretch lace underwire bustier with velvet waistband detail. Garment includes adjustable Euro straps, hook & eye back closure and removable/adjustable garter straps. Matching lace front thong included.

STYLE 11267
EVERGREEN

32, 34, 36, 38





STYLE 11254



Three-piece lace and stretch velvet set. Underwire bra features velvet overlay, adjustable straps and hook & eye back closure; waist corset features velvet binding and hem details with attached/adjustable garters and hook & eye back closure. Matching lace and velvet thong included.

STYLE 11255
EVERGREEN/BLACK

S, M, L, XL



Lace and stretch velvet underwire garter slip with velvet overlay detail on cups, binding and hemline. Garment features adjustable shoulder straps, hook & eye back closure and attached/adjustable garters. Matching G-string included.

STYLE 11254
EVERGREEN/BLACK

XS, S, M, L, XL





STYLE 11280



Stretch velvet teddy with stretch eyelash lace at neckline and hips, satin adjustable straps, satin lace-up back, and snap crotch closure.

STYLE 11280
PLUM

XS, S, M, L, XL



Full-length toga style lace gown with adjustable satin straps, satin side ties, and eyelash lace halter cups. Matching G-string included.

STYLE 11216X
PLUM

1X, 2X, 3X



STYLE 11216
PLUM

S, M, L, XL





STYLE 11252



Stretch velvet garter slip with venice lace sides and over lay on molded cups and underwire bra. Garment features a stretch mesh back and adjustable straps, as well as hook closures in the back. Matching G-string included.

STYLE 11252X
PLUM

1X, 2X, 3X



STYLE 11252
PLUM

XS, S, M, L, XL





STYLE 11256



Stretch velvet and galloon lace bandeau style garter slip with underwire and molded cups, lace detail on back, attached jeweled choker hooks at the back of the neck, and back closure. Garment features attached garters and optional bra straps for extra support. (G-string not included)

Three-piece set. Stretch mesh, open front long-sleeved robe features delicate rhinestone edge trims. Matching unlined triangle cup bralette includes rhinestone trim neckline, adjustable halter ties and elastic underbust support with hook & eye back closure. Matching mesh thong with rhinestone trim included.

STYLE 11256
BLACK



STYLE 11256X
BLACK



STYLE 11258X
BLACK



STYLE 11258
BLACK





Black sheer stretch mesh chemise with plunge front mesh panel, geometric sequin and embroidery details, adjustable criss-cross strapping and low back. (G-string not included)

Black sheer stretch mesh teddy with plunge front mesh panel, geometric sequin and embroidery details, sheer stretch mesh back and snap crotch closure.

STYLE 10979X
BLACK



STYLE 10979
BLACK



STYLE 10980
BLACK





Shimmery metallic-sparkle stretch mesh long sleeved robe with curved hemline, inside ties and matching belt closure. (G-string not included)

STYLE 11283
BLACK

S, M, L, XL



Two-piece set. Stretch mesh, strapless off the shoulder bandeau bralette features short sleeves and marabou feather neckline. High-waisted stretch mesh, flared hem PJ pants with marabou trim. (G-string not included)

STYLE 11262
BLACK

XS, S, M, L, XL





STYLE 11264



Crochet lace chemise with fully sequined front, very low back with satin binding and adjustable criss-cross straps. (G-string not included).

STYLE 11264
BLACK

XS, S, M, L, XL





STYLE 11275



Gold tone draped link chain teddy features decorative rings, lobster clap at back neck and back, adjustable G-string back and extra chain length for adjustable fit.

STYLE 11275
GOLD

O/S





Shimmery metallic-sparkle stretch mesh halter babydoll with multi-color faceted rhinestone trim details and ribbon tie back closures. Matching G-string included.

STYLE 11244
ROSE GOLD

S, M, L, XL



STYLE 11244X
ROSE GOLD

1X, 2X, 3X

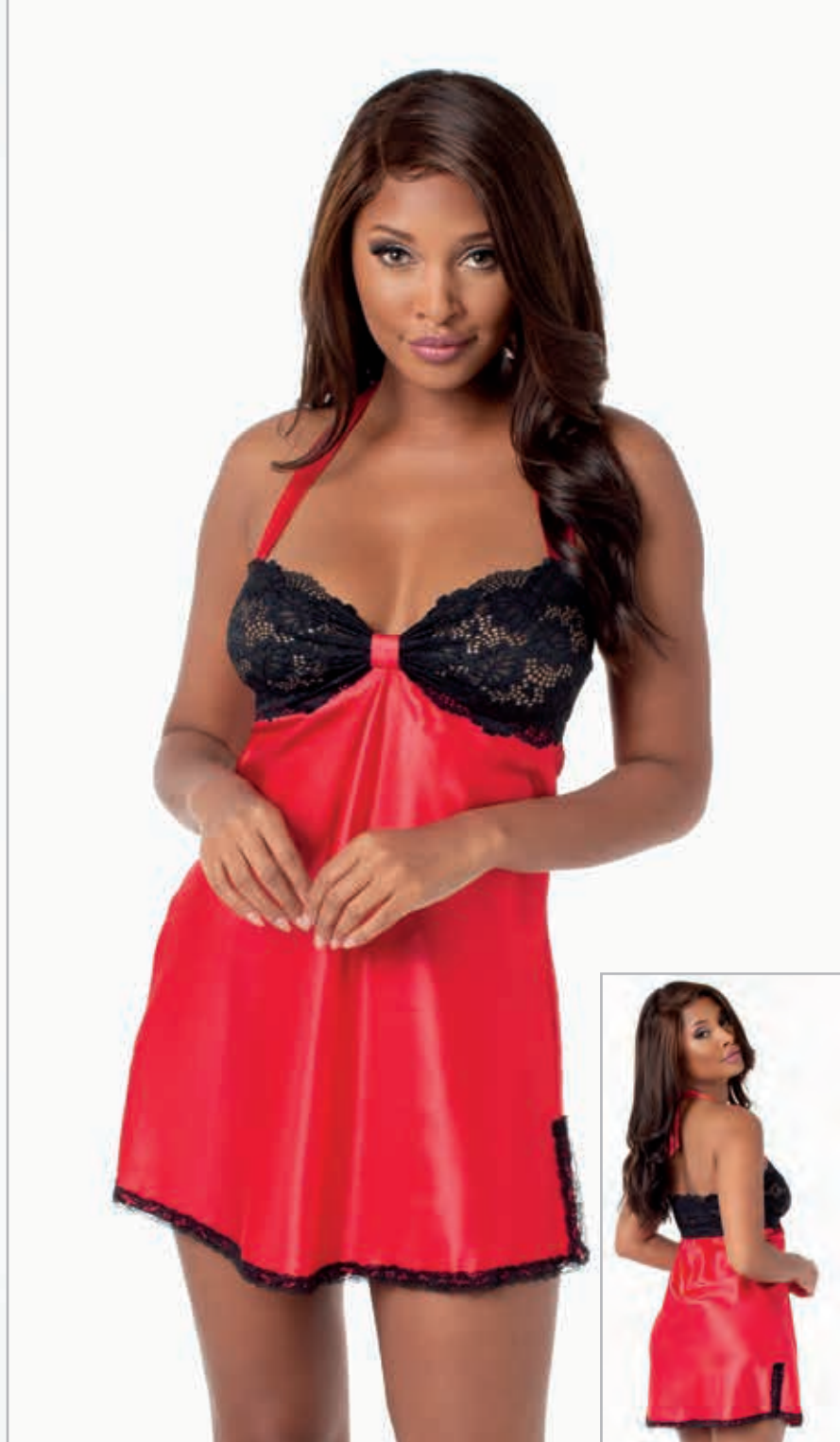


Shimmery metallic-sparkle stretch mesh three-piece set. Bralette is double layer for more coverage and features adjustable straps, wide underbust elastic support and hook & eye back closure; maxi skirt features tie-front closure. Matching G-string included.

STYLE 11265
ROSE GOLD

S, M, L, XL





Unique two-layer underwire babydoll featuring eyelash lace overlay with a stretch satin bustier inner bodice. Garment features molded push-up cups, adjustable straps, hook & eye back closure and attached/adjustable garters. Matching thong included.

Bias cut satin charmeuse chemise features stretch lace cups, sweetheart neckline, adjustable satin halter ties and lace trim hem with side slits.

STYLE 11270
SAPPHIRE/BLACK

S, M, L, XL



STYLE 11270X
SAPPHIRE/BLACK

1X, 2X, 3X



STYLE 10975
SAPPHIRE/BLACK

S, M, L, XL



STYLE 10975
LIPSTICK RED/BLACK

S, M, L, XL





Delicate long-sleeved lace kimono robe with eyelash lace trim, wide sleeves and attached satin belt. (G-string not included)

STYLE 11078
BLACK, RUBY, WHITE

S, M, L, XL



Delicate long-sleeved lace kimono robe with eyelash lace trim, wide sleeves and attached satin belt. (G-string not included)

STYLE 11078X
BLACK, RUBY, WHITE

1X, 2X, 3X



Stretch mesh and stretch galloon lace garter slip with underwire-molded cups, lace back detail, attached garters, hook & eye back closure, velvet trim detail and attached velvet choker. Matching G-string included.

STYLE 10922
GARNET

S, M, L, XL



Stretch mesh and lace babydoll with underwire push-up cups, stretch satin and lace overlay detail, adjustable shoulder straps and hook & eye back closure. Matching G-string included. *Plus garment has been modified by removing the push-up cups.*

STYLE 11020X
MAGENTA, RUBY

1X, 2X, 3X



STYLE 11020
MAGENTA, RUBY

S, M, L, XL





STYLE 11222



Stretch velvet off the shoulder teddy with faux fur trim neckline, removable/adjustable shoulder straps and snap crotch. Garment features princess seams for flatter fit and shape. Matching Santa hat included.

STYLE 11222X
RUBY

1X, 2X, 3X



STYLE 11222
RUBY

XS, S, M, L, XL





Knit jersey wrap robe with self-fabric tie belt, inside tie, and marabou at sleeves and collar.
(G-string not included)

STYLE 11221
RUBY

S, M, L, XL



STYLE 11221X
RUBY

1X, 2X, 3X



STYLE 11221



STYLE 11234



Stretch mesh fly-a-way front babydoll with venice lace underwire cups, strappy cup detail with decorative bows, back hooks, and adjustable straps. Matching venice lace G-string included.

STYLE 11233
FUCHSIA S, M, L, XL



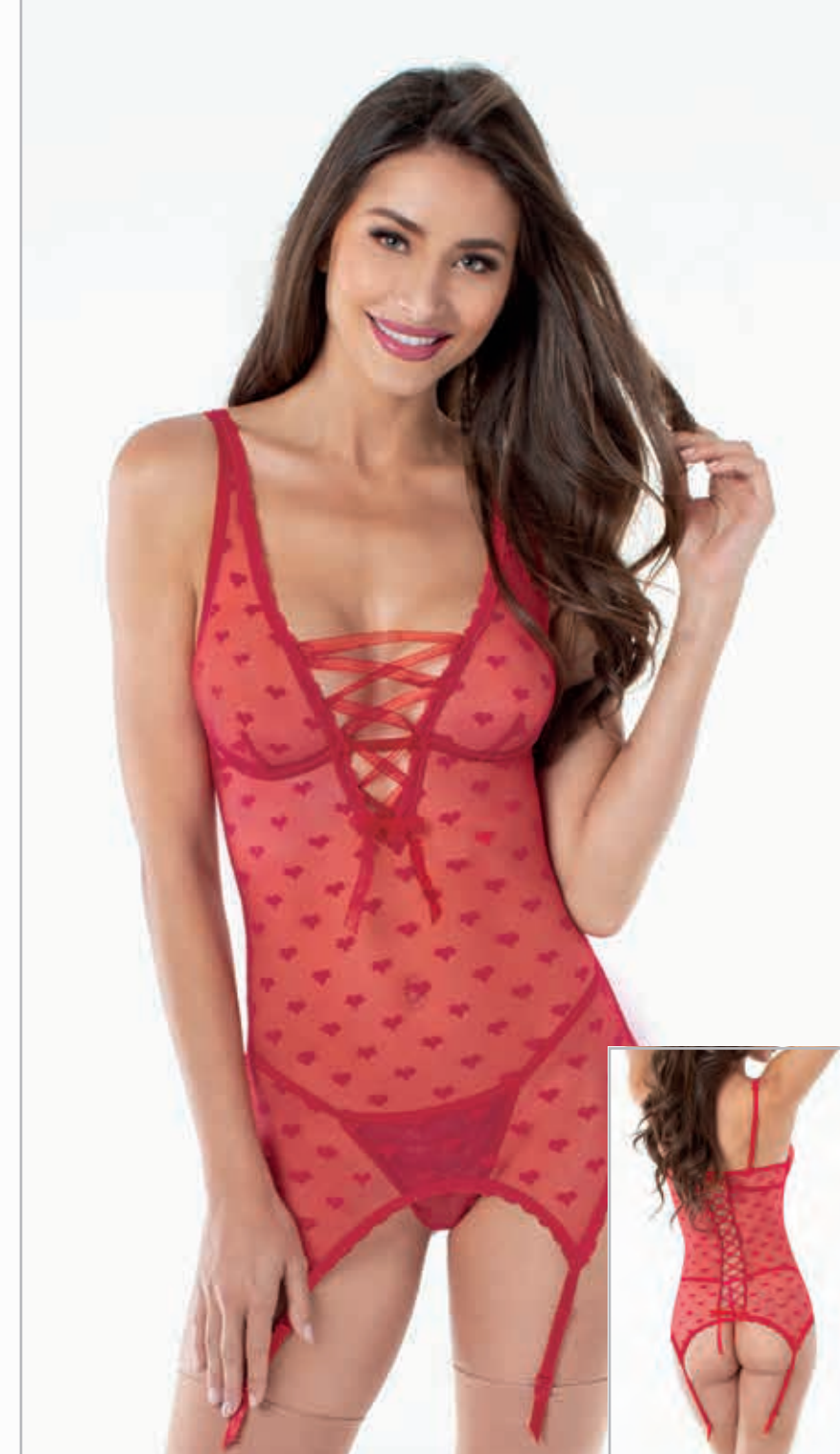
Venice lace teddy with underwire cups, strappy cup detail with decorative bows, back hooks, adjustable straps, and G-string back with bow.

STYLE 11234
FUCHSIA S, M, L, XL



Stretch velvet teddy with heart cut out at front, stretch mesh back, adjustable straps, and snap crotch closure.

STYLE 11231
RUBY S, M, L, XL



Heart jacquard stretch mesh underwire garter slip with lace trims and plunging neckline with adjustable lace-up organza ribbon detail. Garment features adjustable straps, adjustable ribbon lace-up back and attached/adjustable garters. Matching G-string included.

STYLE 11229
RUBY S, M, L, XL





STYLE 11231



Sheer mesh halter teddy with satin hearts and venice embroidery details. Garment features adjustable elastic hook & loop back closures and G-string back.

STYLE 10953
BLACK

S, M, L, XL



Faux leather garter slip featuring heart-shaped cut-out with silver studs at center front, stretch mesh back, and removable garters. Garment comes with a faux leather collar with silver heart and optional bra straps – can be worn strapless or with straps. Matching G-string included.

STYLE 11286
BLACK

XS, S, M, L, XL



Dreamgirl
MOST LOVED
 hanging lingerie



STYLE 10537



Stretch satin teddy with underwire cups and contrast lace overlay. Collared teddy features strappy details, eyelash lace trim, lace tie-back collar, snap crotch and cut-out back with hook closure.

STYLE 10537
 BLACK/RED,
 BLACK/TEAL

XS, S, M, L, XL



Unique stretch satin teddy with contrast galloon lace overlay, tall triangle underwire cups, adjustable straps, attached garter belt with hook & eye back closure, removable/adjustable garters and attached panty with snap crotch.

STYLE 11007
 RASPBERRY/BLACK

XS, S, M, L, XL



Scalloped stretch lace halter teddy with sheer mesh flutter sides, ultra-low-cut back, cheeky bottom coverage, satin ribbon bow belt with tie back and snap crotch closure.

STYLE 10424
 BLACK

S, M, L, XL





Stretch mesh and lace babydoll with underwire push-up cups, stretch satin and lace overlay detail, adjustable shoulder straps and hook & eye back closure. Matching G-string included.

STYLE 11020
MAGENTA, RUBY

S, M, L, XL



Magenta stretch satin plunge-front teddy with black galloon lace overlay, underbust satin tie, high-cut legs, stretch lace thong and adjustable neck and back hook closures.

STYLE 10539
BLACK/MAGENTA

S, M, L, XL



Sheer, stretch mesh teddy with rose vine motif, jewel neckline and hook closure at back neck. Teddy features underwire-molded cups with stretch satin overlay, keyhole front cutout, large keyhole back detail, snap crotch and hook and eye closure. (Thong not included)

STYLE 10999X
BLACK

1X, 2X, 3X



Sheer, stretch mesh teddy with rose vine motif, adjustable back straps and plunge-front halter neckline with adjustable hook closure at neck. Teddy features underwire-molded cups with stretch satin overlay and thong back with small keyhole detail, snap crotch and hook & eye closure.

STYLE 10999
BLACK

XS, S, M, L, XL



Stretch mesh and lace babydoll with underwire push-up cups, stretch satin and lace overlay detail, adjustable shoulder straps and hook & eye back closure. Matching G-string included.
Plus garment has been modified by removing the push-up cups.

STYLE 11020X
MAGENTA, RUBY

1X, 2X, 3X



Fully-boned lace bustier with underwire-molded cups, point d'esprit side panels and wide elastic velvet collar trim with gunmetal ring detail. Bustier features hook & eye back closure and removable/adjustable garters. Matching thong included.

STYLE 10928
BLACK

32, 34, 36, 38



Embroidered venice lace and stretch spandex-mesh chemise with adjustable ribbon lace-up detail. Chemise is versatile and can be worn with embroidery in the front or the back. Matching stretch mesh G-string included.

STYLE 10457
BLACK

XS, S, M, L, XL





Lace halter gown with scalloped-edge trim, plunging neckline, high side slit, low back, satin waist detail and adjustable tie-back closures. Matching G-string included.

STYLE 10460
GARNET

S, M, L, XL



Delicate lace open front gown with scalloped lace edge trim, long sleeves and adjustable ribbon tie front closure. Matching lace G-string included.

STYLE 10095
BLACK

S, M, L, XL



Two-piece set. Mosaic stretch lace teddy features open G-string back with adjustable criss-cross straps; sheer mesh maxi skirt features tie-front closure. *Plus garment has been modified with a higher neckline and full lace back for additional coverage.*

STYLE 10996X
BLACK, WHITE

1X, 2X, 3X



STYLE 10996
BLACK, WHITE

S, M, L, XL





Venice lace bustier with partial satin lining, support boning, underwire-molded cups, adjustable satin Euro straps, removable/adjustable garters and power mesh back with zipper closure. Matching G-string included.

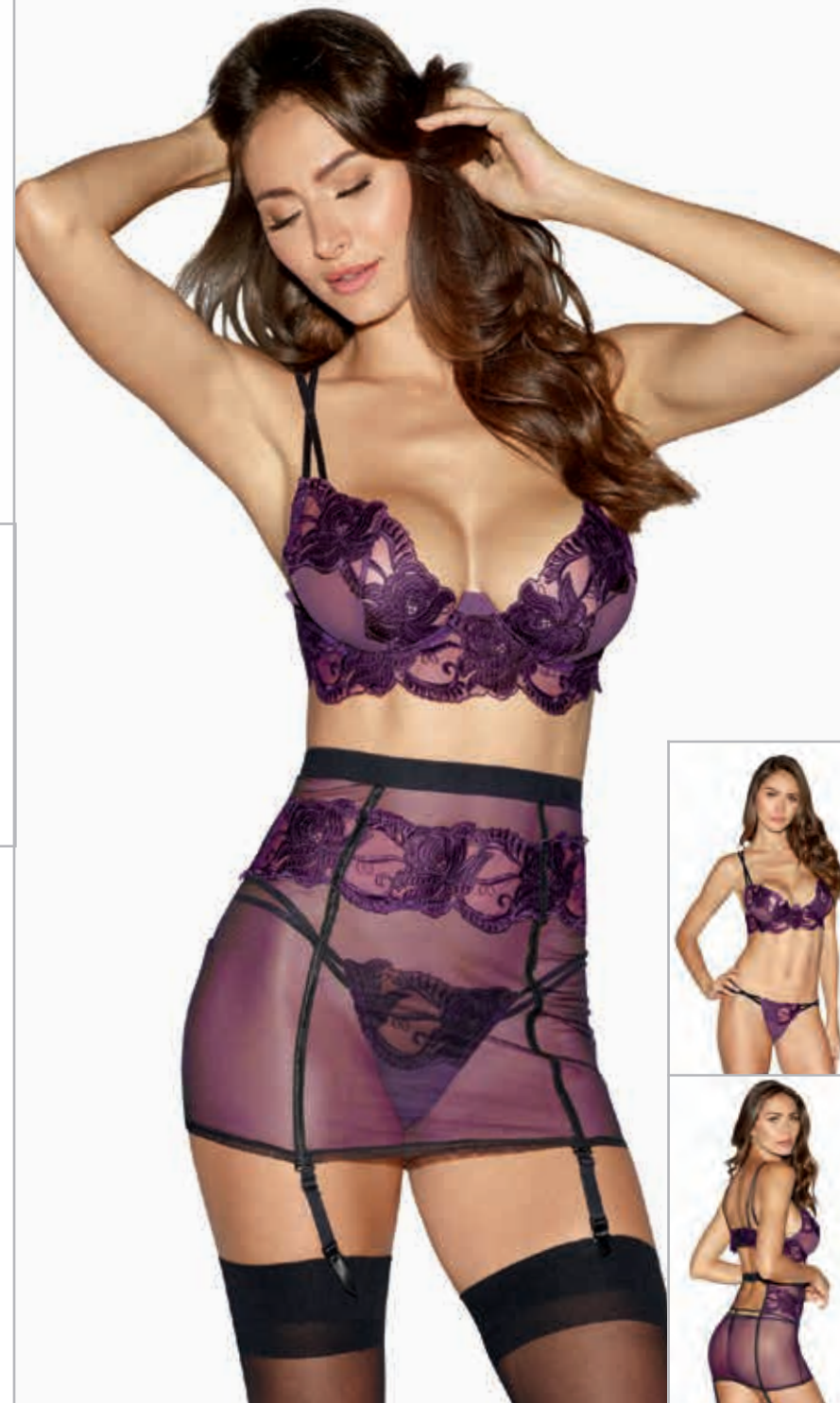
STYLE 11012
DEEP PURPLE

32, 34, 36, 38



STYLE 11012X
DEEP PURPLE

40, 42, 44



Sheer mesh babydoll with underwire cups, embroidery details, adjustable criss-cross straps, hook & eye back closure and removable/adjustable garters attached to bra. Matching G-string included.

STYLE 10998
PLUM/BLACK

S, M, L, XL



A very fine fishnet and galloon lace garter slip with underwire-molded cups, seam details, strappy collared neckline, adjustable straps, attached/adjustable garters and cut-out back with hook & eye closure. Matching G-string included.

STYLE 11013
EGGPLANT

XS, S, M, L, XL



STYLE 11013X
EGGPLANT

1X, 2X, 3X



Three-piece sheer mesh set. Underwire bra features adjustable criss-cross straps, embroidery details and hook & eye back closure; high-waist garter skirt with embroidery details. Matching G-string with criss-cross hip straps included.

STYLE 10997
PLUM/BLACK

S, M, L, XL



Sheer mesh babydoll with underwire cups, embroidery details, adjustable criss-cross straps, hook & eye back closure and removable/adjustable garters attached to bra. Matching G-string included.

STYLE 10998X
PLUM/BLACK

1X, 2X, 3X





Three-piece set. Babydoll features contrast lace overlay on cups, hook & eye front closure, adjustable shoulder straps and flyaway front mesh skirt; matching garter belt features contrast lace overlay front with hook & eye closure and attached/adjustable garters. Matching G-string included.

STYLE 11002
PLUM/BLACK S, M, L, XL



Three-piece set. Babydoll features contrast lace overlay on cups, hook & eye front closure, matching garter belt features contrast lace overlay front with hook & eye closure and attached/adjustable garters. Matching G-string included.

STYLE 11002X
PLUM/BLACK 1X, 2X, 3X



Three-piece, shirt-styled robe set. Delicate floral lace robe features front snap closure and shirttail hem; microfiber bralette features lace trim, strappy details, accent bows, adjustable shoulder straps and back-hook closure.

STYLE 11016
EGGPLANT S, M, L, XL



Delicate long-sleeved lace kimono robe with eyelash lace trim, wide sleeves and attached satin belt. (G-string not included)

STYLE 11078
BLACK, RUBY, WHITE S, M, L, XL



Delicate long-sleeved lace kimono robe with eyelash lace trim, wide sleeves and attached satin belt. (G-string not included)

STYLE 11078X
BLACK, RUBY, WHITE 1X, 2X, 3X



Charmeuse drawstring pant. Pairs well with all of our charmeuse robe styles, sold separately.

STYLE 3863
BLACK S, M, L, XL, XXL





Soft cotton and spandex jersey chemise with contrast scalloped lace neckline inset, adjustable criss-cross straps and low open back with lace inset detail.

STYLE 9703
RED/BLACK

S, M, L, XL



Charmeuse short length kimono robe with attached belt and matching chemise with low back and adjustable criss-cross straps. Matching padded lingerie hanger included.

STYLE 3717X
BLACK, RED, WHITE

1X/2X, 3X/4X



Men's charmeuse lounge boxer with side pocket and elastic waistband.

STYLE 10976
BLACK

M, L, XL, XXL



Charmeuse short length kimono robe with attached belt and matching chemise with low back and adjustable criss-cross straps. Matching padded lingerie hanger included.

STYLE 3717
BLACK, RED, WHITE

S, M, L





STYLE 11242



Three-piece knitted seamless lace set; bandeau bralette includes attached collar with snap back closure and back straps details, matching garter belt has attached/adjustable garters. Matching long gloves included. (G-string not included)

STYLE 11242
 RUBY

O/S



Two-piece set. Bralette features elastic open cups, adjustable tie front with wide satin bow, elastic strappy back, and adjustable satin halter ties. V-string features open crotch, matching adjustable satin tie front closure, and elastic strap back. (Pasties not included)

STYLE 11224
 RUBY

O/S





Stretch lace halter garter slip with lace and velvet trim details. Garment features adjustable halter ties and attached/adjustable garters. Matching G-string included.

STYLE 11247
EVERGREEN

O/S



STYLE 11247X
EVERGREEN

O/S QUEEN



Stretch galloon lace criss-cross teddy with plunge front, rhinestone criss-cross detail, and attached collar with organza ribbon tie back.

STYLE 11251
SAPPHIRE

O/S



Galloon lace and stretch mesh high neck halter chemise features open back with criss-cross straps, sequin decorative criss-cross detail, and ties at the back of the neck. Matching G-string included.

STYLE 11245
BLACK

O/S





Metallic foil printed scalloped stretch lace bustier styled garment with underwire cups and strappy back detail. Garment features adjustable straps and attached/adjustable garters. Matching open crotch G-string included. *Plus garment has been modified with a mesh back for more support and coverage.*

Seamless stretch lace chemise with scalloped lace hem, neckline and shoulder details, and attached lace collar with ribbon tie in back. (G-string not included)

STYLE 11445
METALLIC BLACK

O/S



STYLE 11445X
METALLIC BLACK

O/S QUEEN



STYLE 11248X
GARNET

O/S QUEEN



STYLE 11248
GARNET

O/S





STYLE 11285



STYLE 11285X
METALLIC BLACK

O/S QUEEN



STYLE 11285
METALLIC BLACK

O/S



Metallic knitted fishnet bodysuit with scoop neckline, 3/4 length sleeves, thong back and snap crotch.



STYLE 11285X



Metallic knitted fishnet bodystocking with scoop necklines, 3/4 length sleeves and open crotch. Garment can be worn front or back for varying neckline. (G-string not included)

STYLE 0303X
METALLIC BLACK

O/S QUEEN



STYLE 0303
METALLIC BLACK

O/S





STYLE 11227



Panné velvet and stretch mesh underwire halter bustier styled garment with marabou feather trim, adjustable tie back closures and attached elastic garters. Matching open crotch G-string and Santa hat included.

STYLE 11227
"NORTH POLE HOTTIE"

O/S





Stretch mesh babydoll with fly-a-way back and back tie, marabou hem, center front decorative tie with marabou pom-poms, and satin binding ties at the back of the neck. Matching G-string included.

STYLE 11226
"SANTA'S HELPER"

O/S



STYLE 11226X
"SANTA'S HELPER"

O/S QUEEN



STYLE 11235



Stretch mesh fly-a-way back babydoll with silver hearts and strappy front detail, stretch galloon lace cups, and lace trim at hem. Garment features adjustable straps, back-of-neck hook closure, and ties at the back opening. Strappy panty with silver heart included.

STYLE 11236
RUBY

O/S



STYLE 11236X
RUBY

O/S QUEEN



Stretch heart jacquard galloon lace set with strappy bralette, adjustable straps, and adjustable garters. Strappy garter G-string included.

STYLE 11235
BLACK/RUBY

O/S





Three-piece set. Underwire, open cup bralette features metal heart detail, exposed under boob, adjustable shoulder straps, and adjustable hook & eye back. High-waisted skirt features side shirring and adjustable ribbon lace-up back. Matching G-string included.

STYLE 11238
BLACK

O/S

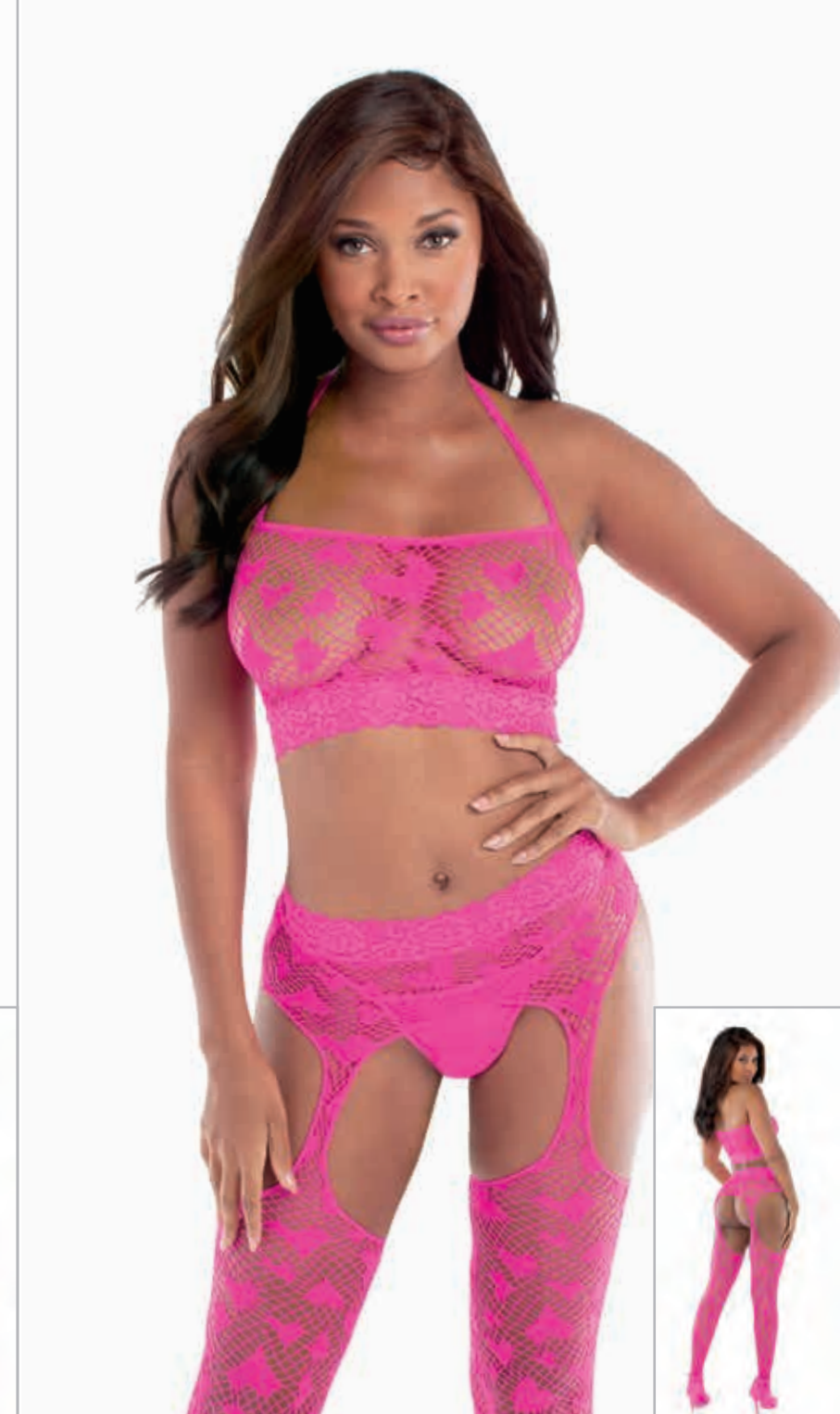


STYLE 11238X
BLACK

O/S QUEEN



STYLE 11241



Stretch lace and stretch mesh halter babydoll features stretch lace cup with metal heart detail, adjustable halter ties, and matching open crotch lace panty with heart detail.

Three-piece set. Stretch lace strapless bandeau bralette with off the shoulder short sleeves and matching panty with ruched butt and strappy back detail with heart ring. Includes lace choker with heart detail and hook & eye back closure.

Fishnet bralette and garter stocking set with knitted heart design. Seamless garment features stretch lace trim, adjustable halter neck strap, and one-piece garter belt with matching stockings all attached. (Thong not included)

STYLE 11241
HOT PINK

O/S



STYLE 11241X
HOT PINK

O/S QUEEN



STYLE 11240
HOT PINK

O/S



STYLE 0304
HOT PINK

O/S



Dreamgirl

MOST LOVED
diamond lingerie



STYLE 10551



Two-piece, strappy garter play set; unlined lace bra and thong with decorative rings, adjustable straps, back hook closures and attached garters.

STYLE 10552
GARNET

O/S



Stretch galloon lace teddy with unlined triangle cups, peek-a-boo cutouts, open crotch, criss-cross adjustable straps and G-string back.

STYLE 10551
GARNET

O/S



Microfiber and stretch mesh garter slip with underwire open-cup detail, embroidered Venice lace trim, and matching neck piece with attached collar strap detail. Garter slip features tie-back closures and removable/adjustable garters. (G-string not included)

STYLE 10571
GARNET

O/S



Stretch lace and stretch mesh babydoll with scalloped lace neckline detail and adjustable halter and shoulder straps. Matching lace tanga panty included.

STYLE 11032
GARNET

O/S





Scalloped, stretch galloon lace bustier with underwire open cups, adjustable shoulder straps and attached/adjustable garters. Matching open-crotch G-string included. *Plus garment has been modified with a stretch mesh back panel.*

STYLE 10561
LIPSTICK RED, WHITE

O/S



STYLE 10561X
LIPSTICK RED, WHITE

O/S QUEEN



Stretch lace garter slip with plunging neckline, unlined triangular cups, princess seam detail, lace trim and low-cut back with adjustable criss-cross straps. (G-string not included)

STYLE 11031
MAGENTA

O/S



Halter stretch lace teddy with plunging neckline, adjustable halter ties and large heart cut-out detail on back. *Plus garment has been modified with a higher neckline.*

STYLE 8694
BLACK, RED, WHITE

O/S



STYLE 8694X
BLACK, RED, WHITE

O/S QUEEN



Stretch lace garter slip with unlined cups, scalloped lace trim, attached garters and low, strappy t-back. Garter slip features strappy neckline with adjustable collar and ring detail. (G-string not included)

STYLE 11028
EGGPLANT

O/S



Stretch mesh halter babydoll with contrast lace detail, ribbon accent and adjustable tie back closures. Matching scalloped lace G-string included.

STYLE 9732
LIPSTICK RED/BLACK,
ORCHID/BLACK

O/S





Stretch lace teddy with plunging neckline, open back, open crotch, eyelash lace trim and contrast organza ribbon neck and wraparound waist ties.

Strappy, stretch galloon lace and mesh babydoll with high neckline, unlined cups, ring detail and eyelash lace trim. Matching G-string included.

STYLE 10596
BLACK/HOT PINK

O/S



STYLE 10596X
BLACK/HOT PINK

O/S QUEEN



STYLE 11034X
BLACK

O/S QUEEN



STYLE 11034
BLACK

O/S



Seamless fishnet collared teddy with plunge-front halter neckline, tie-neck closure, lace trim and G-string back. Matching fishnet gloves with ribbon-tie restraint included.

Scalloped stretch lace halter teddy with contrast ribbon details, tie back closures, and open back panty detail. Matching lace and ribbon wrist restraints included.

Seamless, stretch lace collared slip with plunge-front neckline and racer back with functioning zipper detail.

STYLE 11040
BLACK

O/S



STYLE 9726
BLACK/FUCHSIA

O/S



STYLE 11027X
BLACK

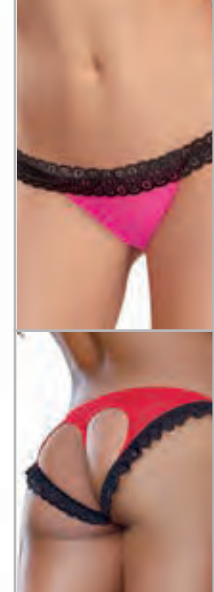
O/S QUEEN



STYLE 11027
BLACK

O/S





Stretch lace leg garter that functions as a wallet with two secret pockets. Pockets can fit a credit card and large phone.



STYLE 10983
BLACK S/M, M/L

Stretch mesh with spandex and stretch lace open back heart panty.



STYLE 1377
HOT PINK/BLACK, RED/BLACK S, M, L, XL
1X/2X, 3X/4X

Stretch lace panty with elastic criss-cross details.

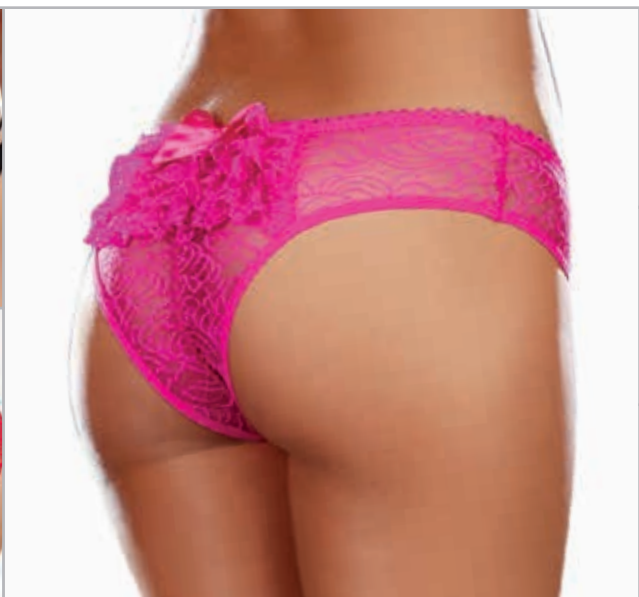
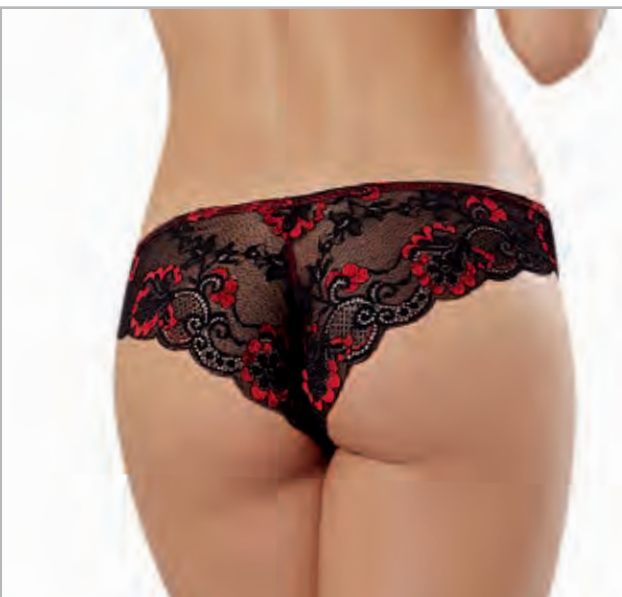
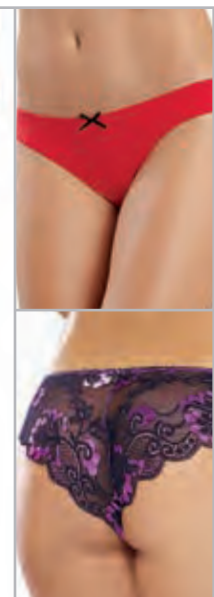


STYLE 1435
BLACK, CORAL, SLATE, TURQUOISE S, M, L, XL

Microfiber cheeky panty with stretch lace trim and elastic criss-cross open back detail.



STYLE 1434
BLACK, HOT PINK/BLACK, IRIS/BLACK, SLATE/BLACK S, M, L, XL
1X, 2X, 3X



Scalloped cross-dye lace and stretch mesh panty with elastic strappy back detail.



STYLE 1424
BLACK S, M, L, XL

Microfiber cheeky panty with cross-dye lace back and satin bow trim.



STYLE 1380
IRIS/BLACK, RED/BLACK S, M, L, XL

Stretch lace band tanga panty with criss-cross strappy waistband detail.

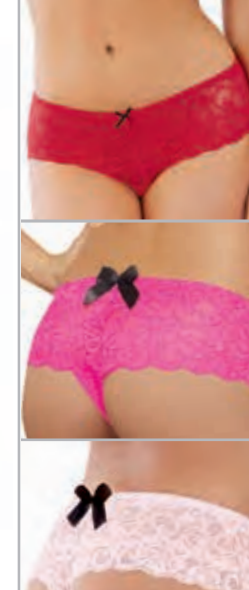


STYLE 1412
BLACK, RED S/M, M/L

Stretch lace open crotch low rise panty with ruffled lace back detail.



STYLE 1300
BLACK, HOT PINK, RED S, M, L
1X/2X, 3X/4X



Stretch lace thong with stretch lace waistband



Excluding white

STYLE 1376
BLACK, RED,
VINTAGE PINK, WHITE
O/S
O/S QUEEN

Sheer thigh-high stockings with lace top.
(Thong and garter belt not included.)

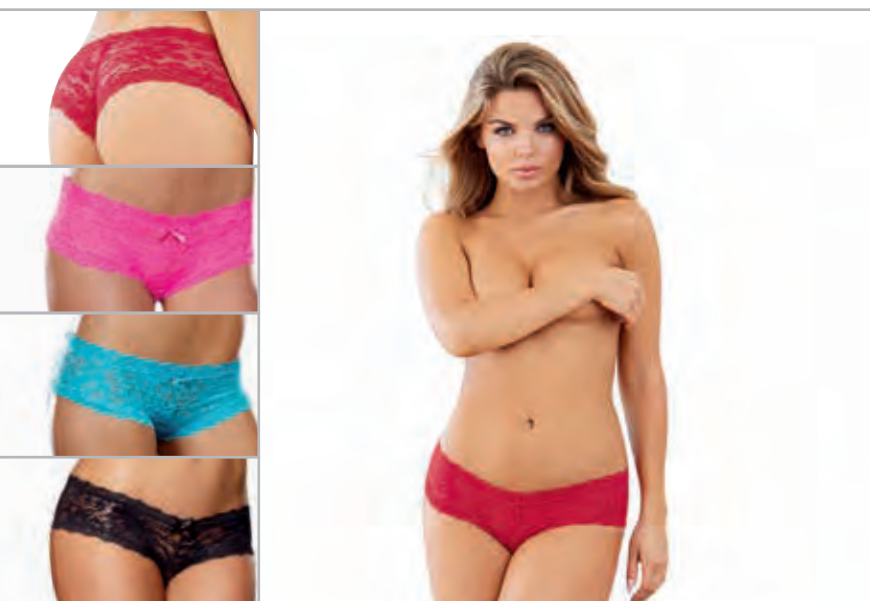


STYLE 0002
BLACK, WHITE
O/S
O/S QUEEN

Sheer thigh-high stockings with stay-up
silicone lace top. (Thong not included.)



STYLE 0005
BLACK, NUDE, RED, WHITE
O/S
O/S QUEEN



Stretch lace low rise cheeky hipster panty with
scalloped lace and satin bow trim.



STYLE 1375
BLACK, HOT PINK,
RED, TURQUOISE
S, M, L, XL

Stretch lace open crotch cheeky boyshort
with satin bow details.



STYLE 7177
BLACK, CORAL, HOT PINK,
RUBY, SAPPHIRE, TURQUOISE,
VINTAGE PINK, WHITE
S, M, L
1X/2X, 3X/4X

Sheer thigh-high stockings with back seam.
(Thong and garter belt not included)



STYLE 0007
BLACK, NUDE, RED, WHITE
O/S
O/S QUEEN

Sheer thigh high stockings with back seam to calf,
bow detail and stay up silicone lace top.



STYLE 0081
BLACK, HOT PINK, WHITE
O/S

2018/2019 FHV Collection

The option to place orders, check inventory & track order status is now at your fingertips...log onto www.DGorders.com



Fishnet thigh-high stockings with back seam and stay up silicone lace top. (Thong not included)



STYLE 0001
BLACK, NUDE, WHITE

O/S
O/S QUEEN

Fishnet thigh-high stockings with lace top. (Thong and garter belt not included)



STYLE 0006
BLACK, RED

O/S
O/S QUEEN



Neon sheer thigh-high stockings with stay-up silicone lace top.



STYLE 0005N
NEON PINK

O/S
O/S QUEEN



Fishnet thigh-high stockings with back seam and stay up silicone lace top.



STYLE 0001N
HOT PINK

O/S
O/S QUEEN

Women's US Size Chart														
	REGULAR SIZES								PLUS SIZES					
	XS	S	M	L	XL	S/M	M/L	O/S	1X/2X	3X/4X	1X	2X	3X	O/S QUEEN
SIZE	0-2	2-6	6-10	10-14	14-16	2-8	8-14	2-14	16-20	22-24	16-18	20-22	24-26	16-22
CORSET SIZE		32	34	36	38						40	42	44	
CUP	A	A/B	B/C	C/D	D/E	A/B	B/C	B/C	D/DD	DD	D/DD	DD/DD	DDD/F	D/DD
BUST	30"-32"	32"-34"	34"-36"	36"-38"	38"-40"	32"-34"	36"-38"	32"-38"	40"-46"	46"-52"	44"-46"	48"-50"	52"-54"	40"-50"
WAIST	23"-25"	25"-27"	27"-29"	29"-31"	31"-33"	25"-27"	28"-30"	24"-31"	36"-42"	42"-46"	38"-40"	42"-44"	46"-48"	36"-44"
HIP	32"-34"	34"-36"	36"-38"	38"-40"	40"-42"	34"-36"	38"-40"	34"-40"	44"-50"	50"-54"	46"-48"	50"-52"	54"-56"	42"-52"
INSEAM	32"	32"	32"	32"	32"	32"	32"	32"	32"	32"	32"	32"	32"	32"
RISE	6 1/2"-7"	7"-7 1/2"	7 1/2"-8"	8"-8 1/2"	8 1/2"-9"	7 1/2"-8"	8"-8 1/2"	7 1/2"-8"	9"-9 1/2"	10"-10 1/2"	9"-9 1/2"	10"-10 1/2"	11"-11 1/2"	9"-10"
WEIGHT	85 lbs-90 lbs	90 lbs-120 lbs	120 lbs-140 lbs	140 lbs-160 lbs	160 lbs-180 lbs	90 lbs-130 lbs	130 lbs-160 lbs	90 lbs-160 lbs	165 lbs-220 lbs	220 lbs-265 lbs	180 lbs-220 lbs	220 lbs-260 lbs	260 lbs-300 lbs	180 lbs-260 lbs

Women's INTERNATIONAL Size Chart														
	REGULAR SIZES								PLUS SIZES					
	XS	S	M	L	XL	S/M	M/L	O/S	1X/2X	3X/4X	1X	2X	3X	O/S QUEEN
UK	0-2	6-8	10-12	14-16	16-18	6-10	12-16	6-16	18-22	24-26	18-20	22-24	26-28	18-24
FRANCE/SPAIN	32-34	34-36	38-40	42-44	44-46	34-38	40-44	33-44	46-50	52-54	46-48	50-52	54-56	46-52
GERMANY	30-32	32-34	36-38	40-42	42-44	32-36	38-42	32-42	44-48	50-52	44-46	48-50	52-54	44-50
ITALY	34-36	38-40	42-44	46-48	48-50	38-42	44-48	38-48	50-54	56-58	50-52	54-56	58-60	50-56
JAPAN	5	7-9	11-13	15-17	19-21	13-17	13-17	7-17	21-25	25-29	21-23	25-27	29-31	21-25
CUP	A	A/B	B-C	C/D	D/E	A/B	B/C	B/C	D/DD	DD	D/DD	DD/DD	DDD/F	D/DD
US CORSET SIZE	32	34	36	38	38				40	42	44	44	44	
BUST	76cm-81cm	81cm-86cm	86cm-91cm	91cm-97cm	97cm-102cm	81cm-86cm	91cm-97cm	81cm-97cm	102cm-117cm	117cm-132cm	112cm-117cm	122cm-127cm	132cm-137cm	112cm-127cm
WAIST	54cm-64cm	64cm-69cm	69cm-74cm	74cm-79cm	79cm-84cm	61cm-66cm	71cm-81cm	61cm-86cm	91cm-107cm	107cm-117cm	107cm-112cm	117cm-122cm	117cm-122cm	91cm-112cm
HIP	81cm-86cm	86cm-91cm	91cm-97cm	97cm-102cm	101cm-107cm	86cm-91cm	97cm-102cm	91cm-102cm	112cm-127cm	127cm-137cm	117cm-122cm	127cm-132cm	137cm-142.5cm	107cm-135cm
INSEAM	81cm	81cm	81cm	81cm	81cm	81cm	81cm	81cm	81cm	81cm	81cm	81cm	81cm	81cm
RISE	16cm-18cm	18cm-19cm	19cm-20cm	20cm-22cm	22cm-23cm	19cm-20cm	20cm-22cm	19cm-20cm	23cm-24cm	25cm-27cm	23cm-24cm	25.5cm-26.5cm	28cm-29cm	23cm-25cm
WEIGHT	39kg-41kg	41kg-54kg	54kg-64kg	64kg-73kg	73kg-85kg	41kg-59kg	59kg-73kg	41kg-73kg	75kg-100kg	100kg-120kg	81kg-100kg	100kg-118kg	118kg-136kg	82kg-118kg

Dreamgirl Catalog Calendar

Catalogue	Month Issued	Duration
Collection	November	November-October
Costume Collection	January	January-October
Simply Sexy	February	February-June
Fall/Holiday	June	June-February

Men's US Size Chart						
	M	L	XL	XXL	3XL	4XL
SIZE	38-40	42-44	46-48	50-52	38-44	46-52
CHEST	38"-40"	42"-44"	46"-48"	50"-52"	38"-44"	46"-52"
WAIST	32"-34"	36"-38"	40"-42"	44"-46"	32"-38"	40"-46"
HIP	39"-41"	43"-45"	47"-49"	51"-53"	39"-45"	47"-53"
INSEAM	32"	32"	32"	32"	32"	32"
WEIGHT	140-150 lbs	150-200 lbs	200-250 lbs	250-300 lbs	140-200 lbs	200-300 lbs

Men's INTERNATIONAL Size Chart					
	M	L	XL	XXL	3XL
UK	38-40	42-44	46-48	50-52	38-44
EU	48-50	52-54	56-58	60-62	46-48
JAPAN	40-42	44-46	48-50	52-54	40-46
CHEST	97cm-102cm	106cm-112cm	117cm-123cm	127cm-132cm	97cm-112cm
WAIST	81cm-86cm	91cm-97cm	102cm-107cm	113cm-117cm	81cm-97cm
HIP	99cm-104cm	109cm-114cm	119cm-124cm	130cm-135cm	99cm-114cm
INSEAM	81cm-86cm	81cm-86cm	81cm-86cm	81cm-86cm	81cm-86cm
WEIGHT	64kg-68kg	68kg-91kg	91kg-113kg	113kg-136kg	64kg-91kg



The images and graphics in this catalogue [or CD] are the copyright-protected work of DG Brands. Any use or reproduction without the express written consent of DG Brands is strictly prohibited. Violators will be prosecuted to the fullest extent of the law.