

[®]
Dreamgirl

2018 COLLECTION

正規販売代理店

Lady Cat

by Cat Fish Club

<http://www.ladycat.com>

service@ladycat.com

TEL 047-397-7377



STYLE 11007



NEW RELEASES

HANGING LINGERIE 3

SWEET DREAMS SLEEPWEAR 73

ROBES 83

NUPTIALS LINGERIE 91

BRAS 104

BODY BLING 107

RED DIAMOND LINGERIE 111

RED DIAMOND FETISH 136

RED DIAMOND BEDROOM COSTUMES 145

WHITE DIAMOND NUPTIALS LINGERIE 159

RED DIAMOND GARTER BELTS 169

PACKAGED PANTIES 171

BLACK DIAMOND HOSIERY 177

MOST LOVED

HANGING LINGERIE 53

ROBE SETS 88

NUPTIALS LINGERIE 99

BRAS 105

RED DIAMOND LINGERIE 124

RED DIAMOND FETISH 141

RED DIAMOND BEDROOM COSTUMES 154

WHITE DIAMOND NUPTIALS LINGERIE 164

RED DIAMOND GARTER BELTS 170

PACKAGED PANTIES 173

BLACK DIAMOND HOSIERY 186



Unique stretch satin teddy with contrast galloon lace overlay, tall triangle underwire cups, adjustable straps, attached garter belt with hook & eye back closure, removable/adjustable garters and attached panty. Shown with Style 0005 thigh highs; sold separately.

STYLE 11007
RASPBERRY/BLACK

XS, S, M, L, XL





Stretch satin garter slip with galloon lace overlay, tall triangle underwire cups, adjustable straps, removable/adjustable garters and keyhole back detail with hook & eye closure. Shown with Style 0007 thigh highs; sold separately. (G-string not included.)

STYLE 11008X 1X, 2X, 3X
RASPBERRY/BLACK



STYLE 11008 S, M, L, XL
RASPBERRY/BLACK





STYLE 11002





Three-piece set. Babydoll features contrast lace overlay on cups, hook & eye front closure, adjustable shoulder straps and flyaway-front mesh skirt; matching garter belt features contrast lace overlay front with hook & eye closure and attached/adjustable garters. Matching G-string included. Shown with Style 0007 thigh highs; sold separately.

STYLE 11002
PLUM/BLACK

S, M, L, XL



STYLE 11002X
PLUM/BLACK

1X, 2X, 3X





Available in Extra Small



Stretch satin garter slip with contrast stretch lace cups, hook & eye front closure, adjustable shoulder straps and attached/adjustable garters. Matching lace G-string included. Shown with Style 0007 thigh highs; sold separately.

STYLE 11001
PLUM/BLACK

XS, S, M, L, XL





STYLE 10997



Three-piece sheer mesh set. Underwire bra features adjustable criss-cross straps, floral embroidery details and hook & eye back closure; high-waist garter skirt features embroidery details, hook & eye back closure and removable/adjustable garters. Matching G-string with criss-cross hip straps included. Shown with Style 0007 thigh highs; sold separately.

STYLE 10997

S, M, L, XL

PLUM/BLACK





Sheer mesh babydoll with underwire cups, floral embroidery details, adjustable criss-cross straps, hook & eye back closure and removable/adjustable garters attached to bra. Matching G-string included. Shown with Style 0007 thigh highs; sold separately.

STYLE 10998
PLUM/BLACK

S, M, L, XL



STYLE 10998X
PLUM/BLACK

1X, 2X, 3X





Venice lace bustier with partial satin lining, support boning, underwire-molded cups, adjustable satin Euro straps, removable/adjustable garters and power mesh back with zipper closure. Matching G-string included. Shown with Style 0007 thigh highs; sold separately.

STYLE 11012X

40, 42, 44

DEEP PURPLE



STYLE 11012

32, 34, 36, 38

DEEP PURPLE





Stretch galloon lace and very fine fishnet garter slip with underwire-molded cups, seam details, strappy collared neckline, adjustable straps, attached/adjustable garters and cut-out back with hook & eye closure. Matching G-string included. Shown with Style 0007 thigh highs; sold separately.





Stretch galloon lace and very fine fishnet garter slip with underwire-molded cups, seam details, strappy collared neckline, adjustable straps, attached/adjustable garters and cut-out back with hook & eye closure. Matching G-string included. Shown with Style 0007X thigh highs; sold separately.

STYLE 11013X

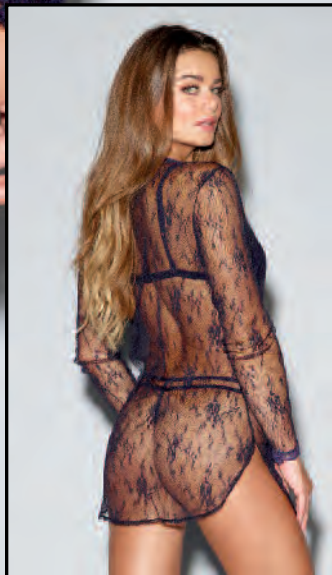
1X, 2X, 3X

EGGPLANT





STYLE 11016

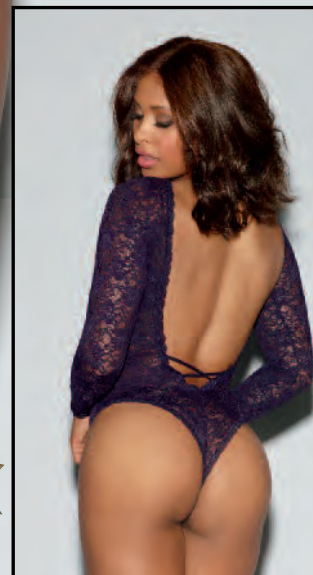


Three-piece, shirt-styled robe set. Delicate floral lace robe features front snap closure and shirttail hem; microfiber bralette features lace trim, strappy details, accent bow, adjustable shoulder straps and back-hook closure. Matching G-string included.

STYLE 11016

S, M, L, XL

EGGPLANT



Available in Extra Small

Stretch lace, long-sleeved teddy with bateau neckline, open back with criss-cross elastic strap detail and thong back with snap crotch.

STYLE 11009

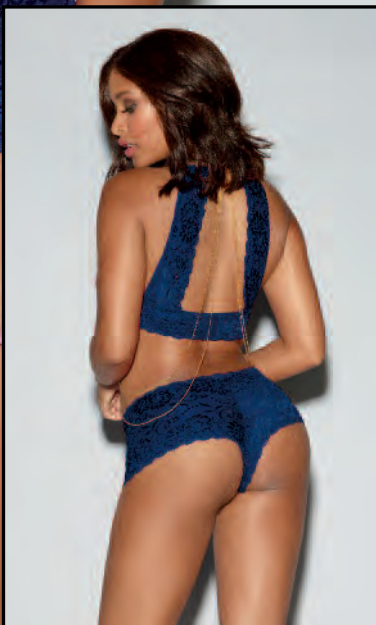
XS, S, M, L, XL

EGGPLANT





STYLE 11015



Two-piece bralette set. Stretch lace halter bralette features attached delicate draped chains, wide back straps, small neck-hook closure and hook & eye back closure. Matching lace panty included.

STYLE 11015

S, M, L, XL

MIDNIGHT



Stretch lace and stretch mesh chemise with plunging neckline, attached delicate draped chains and adjustable shoulder straps. Matching thong included.

STYLE 11014

S, M, L, XL

MIDNIGHT





STYLE 11081



Stretch lace collared teddy with plunging neckline, lace edging, back zipper closure and thong back with snap crotch.

STYLE 11081X
MIDNIGHT

1X, 2X, 3X



STYLE 11081
MIDNIGHT

S, M, L, XL





Silky satin bias-cut chemise with cowl neck, T-back strap and eyelash lace hem.

STYLE 10532

S, M, L, XL

MIDNIGHT, SLATE





Delicate, draped fringe chemise with halter T-back styling and adjustable straps. Matching mesh G-string included.

STYLE 10102
MIDNIGHT

S, M, L, XL



Silky satin romper with plunge-front neckline, elastic waist, front tie, eyelash lace trim and adjustable halter ties.

STYLE 10469
SLATE

S, M, L, XL





Three-piece, stretch satin and stretch lace garter set. Bra features strappy cup detail, adjustable straps and hook & eye back closure; satin waist corset features stretch lace princess seam details, support boning, hook & eye back closure and adjustable garters. Matching stretch lace panty with stretch satin binding details included. Shown with Style 0007 thigh highs; sold separately.

STYLE 10494

S, M, L, XL

GARNET, SLATE





Stretch satin garter slip with strappy underwire cup, stretch lace accents, princess seam details, adjustable straps, hook & eye back closure and removable/adjustable garters. Shown with Style 0007 thigh highs; sold separately. G-string not included.

STYLE 10493X
GARNET, SLATE

1X, 2X, 3X



STYLE 10493
GARNET, SLATE

XS, S, M, L, XL





STYLE 10996



Two-piece set. Mosaic stretch lace teddy features open G-string back with adjustable criss-cross straps; sheer mesh maxi skirt features tie-front closure. *Plus garment has been modified with a higher neckline and full lace back for additional coverage.*

STYLE 10996X
BLACK, WHITE

1X, 2X, 3X



STYLE 10996
BLACK, WHITE

S, M, L, XL





STYLE 10993



Nude Illusion Cups

Stretch lace and fishnet halter teddy with underwire-molded nude illusion cups, adjustable neck closure and seam details. Teddy features faux lace-up stretch mesh back with hook & eye closure and snap crotch.

STYLE 10993

S, M, L, XL

BLACK



Nude Illusion Cups

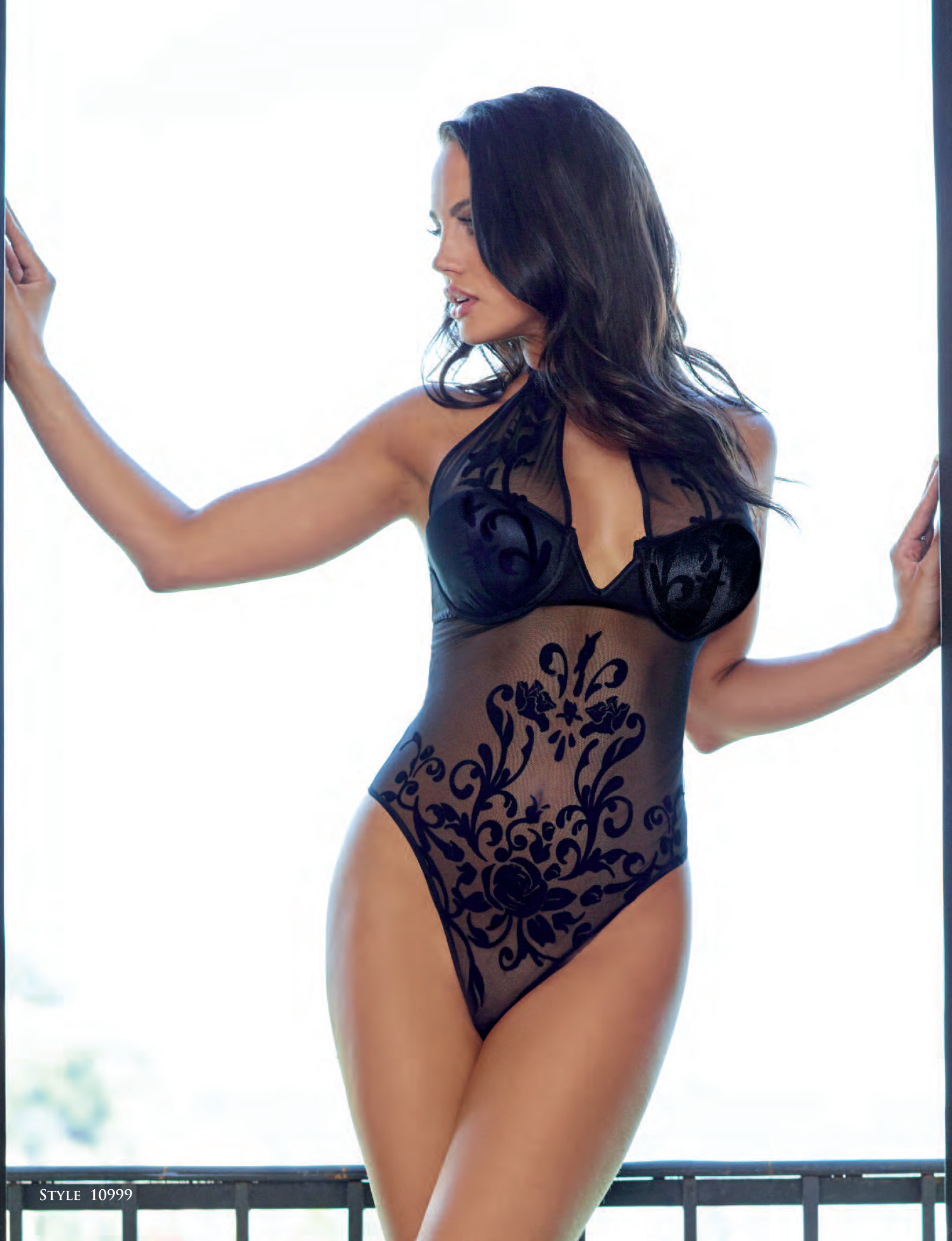
Three-piece bralette set. Stretch lace and fishnet halter bralette features underwire-molded nude illusion cups, adjustable neck closure, seam details and hook & eye back closure; matching garter skirt features faux lace-up back and attached/adjustable garters. Matching G-string included. Shown with Style 0007 thigh highs; sold separately.

STYLE 10994

S, M, L, XL

BLACK





STYLE 10999



Sheer, stretch mesh teddy with rose vine motif, jewel neckline and hook closure at neck. Teddy features underwire-molded cups with stretch satin overlay, keyhole front cutout, large keyhole back detail, snap crotch and hook & eye closure. (Thong not included.)

STYLE 10999X 1X, 2X, 3X

BLACK



Sheer, stretch mesh teddy with rose vine motif, adjustable back straps and plunge-front halter neckline with hook closure at neck. Teddy features underwire-molded cups with stretch satin overlay and thong back with small keyhole detail, snap crotch and hook & eye closure.

STYLE 10999 XS, S, M, L, XL

BLACK





Allover eyelash lace garter slip with stretch-satin-lined front panel and satin-covered underwire cups with contrast eyelash lace overlay. Collared garter slip features strappy details, lace tie-back collar and back hook closure. G-string not included.

STYLE 11005
BLACK/TEAL

XS, S, M, L, XL



STYLE 11005X
BLACK/TEAL

1X, 2X, 3X





Stretch satin teddy with underwire cups and contrast eyelash lace overlay. Collared teddy features strappy details, lace tie-back collar, snap crotch and cut-out back with hook & eye closure.

STYLE 10537

XS, S, M, L, XL

BLACK/RED, BLACK/TEAL





Push-Up Cup

Stretch mesh and lace babydoll with underwire push-up cups, stretch satin and lace overlay detail, adjustable shoulder straps and hook & eye back closure. Matching G-string included. *Plus garment has been modified by removing the push-up cups.*

STYLE 11020

S, M, L, XL

BLACK, MAGENTA

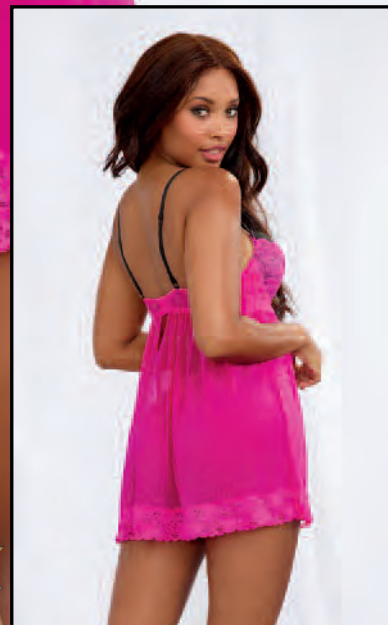


STYLE 11020X

1X, 2X, 3X

BLACK, MAGENTA





Stretch mesh and lace babydoll with underwire push-up cups, stretch satin and lace overlay detail, adjustable shoulder straps and hook & eye back closure. Matching G-string included. *Plus garment has been modified by removing the push-up cups.*

STYLE 11020X

1X, 2X, 3X

BLACK, MAGENTA



STYLE 11020

S, M, L, XL

BLACK, MAGENTA





STYLE 11017



Floral-embroidered stretch mesh garter slip with underwire cups, scalloped neckline, adjustable organza ribbon lace-up detail, adjustable shoulder straps, hook & eye back closure and removable/adjustable garters. Matching thong included. Shown with Style 0007 thigh highs; sold separately.

STYLE 11017
VINTAGE PINK

S, M, L, XL





Floral-embroidered stretch mesh babydoll with underwire cups, scalloped neckline, adjustable organza ribbon lace-up detail, adjustable shoulder straps and hook & eye back closure. Matching embroidered thong included.

STYLE 11018
VINTAGE PINK

S, M, L, XL



STYLE 11018X
VINTAGE PINK

1X, 2X, 3X





Stretch, scalloped, galloon lace halter babydoll with sweetheart neckline, wide tie-back satin halter straps, large front bow and flyaway ruffled hem. Matching scalloped lace tanga panty included.

STYLE 9678X
AQUA, BLACK

1X/2X, 3X/4X



STYLE 9678
AQUA, BLACK

S, M, L, XL





Two-piece bralette set. Mosaic stretch lace and baby fishnet double-layered bralette features underwire cups, faux lace-up detail, adjustable straps and hook & eye back closure; matching high-waist panty features double-layered front and peek-a-boo back with faux lace-up detail.

STYLE 11003
BLACK

S, M, L, XL



Mosaic stretch lace and baby fishnet double-layered chemise with underwire cups, faux lace-up front and back detail, adjustable straps and peek-a-boo back with hook & eye closure. Matching thong included.

STYLE 11004
BLACK

S, M, L, XL





STYLE 10985

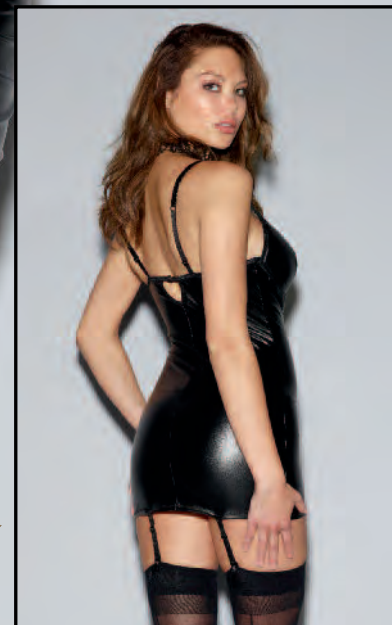


Faux-leather teddy with underwire-molded cups, adjustable straps, back-hook closure with keyhole detail and thong back with snap crotch. Teddy features plunge-front neckline with Venice lace adjustable collar and trim.

STYLE 10985
BLACK

XS, S, M, L, XL





Faux-leather garter slip with underwire-molded cups, adjustable straps, back-hook closure with keyhole detail and removable/adjustable garters. Garter slip features plunge-front neckline with Venice lace adjustable collar and trim. Shown with Style 0007 thigh highs; sold separately.

STYLE 10984X

1X, 2X, 3X

BLACK



STYLE 10984

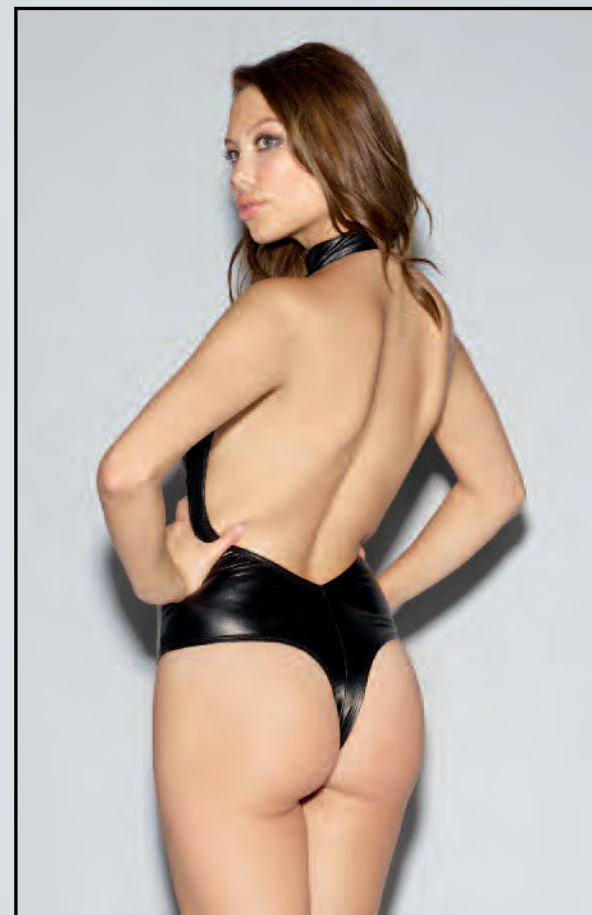
XS, S, M, L, XL

BLACK





STYLE 10988



Stretch knit, faux-leather halter teddy with draped chain detail, snap-neck closure and thong back with snap crotch.

STYLE 10988

S, M, L, XL

BLACK





STYLE 10990



Fishnet garter slip with wide satin elastic strap details, adjustable shoulder & halter straps, attached/adjustable garters and cut-out back design with back-hook closure. Matching G-string included. Shown with Style 0007 thigh highs; sold separately.

STYLE 10990

S, M, L, XL

BLACK





STYLE 10992X



Unique two-layer garment. Fishnet halter chemise features collared neckline with hook & eye closure and strappy open back; attached microfiber teddy features plunging neckline, removable/adjustable garters and thong back with snap crotch. Shown with Style 0007 thigh highs; sold separately. *Plus garment has been modified with a lower leg and higher back.*

STYLE 10992X

1X, 2X, 3X

BLACK



STYLE 10992

S, M, L, XL

BLACK





STYLE 10928

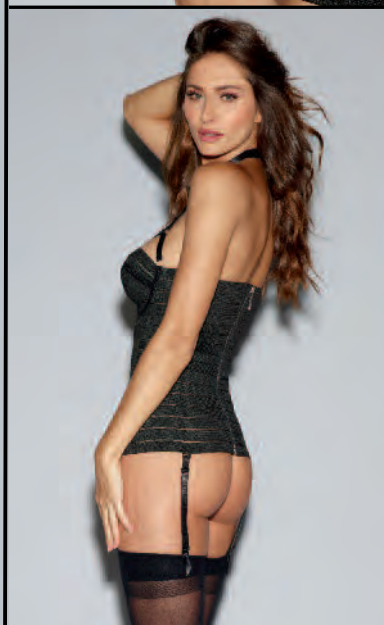




Fully-boned lace bustier with underwire-molded cups, point d'esprit side panels and wide elastic velvet collar trim with gunmetal ring detail. Bustier features hook & eye back closure and removable/adjustable garters. Matching thong included. Shown with Style 0007 thigh highs; sold separately.

STYLE 10928 32, 34, 36, 38

BLACK



Bandage-style bustier with underwire cups, seam details, strappy collared neckline with silver ring accents, back zipper and attached/adjustable garters. Shown with Style 0007 thigh highs; sold separately. (G-string not included.)

STYLE 11000 32, 34, 36, 38

BLACK





Two-piece bralette set. Clear plastic underwire bralette features stud details, adjustable wide elastic straps and back-zipper closure; matching clear plastic G-string features stud details and elastic-strap back. (Black G-string and pasties not included.)

STYLE 10989

32, 34, 36, 38

CLEAR



Dreamgirl

MOST LOVED

h a n g i n g l i n g e r i e

STYLE 10531



Very fine, sheer, stretch mesh and delicately-scalloped stretch lace teddy with high neck, low back, adjustable straps, back-neck closure and thong back with snap crotch.

STYLE 10531

XS, S, M, L, XL

BLACK



Very fine, sheer, stretch mesh and delicately-scalloped stretch lace gown with floor-length hem, high neck, high front slit and low back with adjustable straps and back-neck closure. Matching G-string included.

STYLE 10530

S, M, L, XL

BLACK





Delicate lace open-front gown with scalloped lace trim, long sleeves and ribbon-tie front closure. Matching lace G-string included.

STYLE 10095

S, M, L, XL

BLACK



Shimmery metallic-sparkle stretch mesh gown with high triangle cups, body-skimming fit, dramatic back train and halter T-back strap. Matching G-string included.

STYLE 10013

S, M, L, XL

BLACK





Stretch mesh and stretch galloon lace garter slip with high neck, open décolletage, low back, scalloped lace trim, unlined underwire cups, attached/adjustable garters and back-neck closure. Matching G-string included. Shown with Style 0005 thigh highs; sold separately.

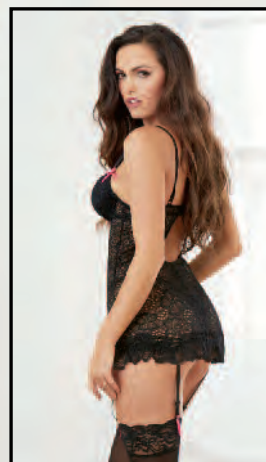
STYLE 10925 S, M, L, XL
BLACK



Scalloped stretch lace halter teddy with sheer mesh flutter sides, low-cut back, cheeky bottom coverage, tie-back satin ribbon bow belt and snap crotch closure.

STYLE 10424
BLACK

S, M, L, XL



Stretch lace garter slip with underwire-molded cups, ruffled lace hem, adjustable shoulder straps, keyhole back with hook & eye closure and removable/adjustable garters. Matching thong included. Shown with Style 0005 thigh highs; sold separately.

STYLE 8626
BLACK

S, M, L, XL





Available In Extra Small

Stretch lace garter slip with mosaic pattern, open sides, strappy details, adjustable shoulder straps and removable/adjustable garters. Matching G-string included. Shown with Style 0007 thigh highs; sold separately.

STYLE 10545

XS, S, M, L, XL

BLACK



Three-piece, stretch lace garter set. Bralette features mosaic pattern, strappy details and adjustable shoulder straps; garter skirt features strappy details and side attached/adjustable garters. Matching G-string included. Shown with Style 0007 thigh highs; sold separately.

STYLE 10546

S, M, L, XL

BLACK





Available in Extra Small

Versatile - 2 Styles in 1



Embroidered Venice lace and stretch spandex-mesh chemise with adjustable ribbon lace-up detail. Chemise is versatile and can be worn with embroidery in the front or the back. Matching stretch mesh G-string included.

STYLE 10457 XS, S, M, L, XL
BLACK



Unique two-layer garment; stretch lace chemise with eyelash lace trim, stretch satin bustier, underwire shelf bra, adjustable shoulder straps, hook & eye back closure and adjustable garter straps. Matching G-string included. Shown with Style 0005 thigh highs; sold separately.

STYLE 10479 S, M, L, XL
BLACK/MAGENTA



Unique two-layer garment; stretch lace chemise with eyelash lace trim, stretch satin bustier, underwire shelf bra, adjustable shoulder straps, hook & eye back closure and adjustable garter straps. Matching G-string included. Shown with Style 0005X thigh highs; sold separately.

STYLE 10479X 1X/2X, 3X/4X
BLACK/MAGENTA





Stretch knit, faux-leather collared garter slip with Venice lace center panel, underwire-molded cups and power-mesh back with cut-out detail and back zipper. Shown with Style 0007 thigh highs; sold separately. (G-string not included.)

STYLE 10599 S, M, L, XL
BLACK



Stretch knit, faux-leather collared garter slip with Venice lace center panel, underwire-molded cups and power-mesh back with cut-out detail, adjustable straps, bra band and back zipper. Shown with Style 0007X thigh highs; sold separately. (G-string not included.)

STYLE 10599X 1X, 2X, 3X
BLACK



Stretch knit, faux-leather collared teddy with Venice lace side panels, underwire-molded cups, removable/adjustable garters, power-mesh back with cut-out detail and back zipper. Shown with Style 0007 thigh highs; sold separately.

STYLE 10600 S, M, L, XL
BLACK





Faux-leather and Venice lace fully-boned corset with lace-up front detail, hi-low attached skirt, lace shoulder straps and back zipper closure. Matching thong included. Lace straps can be worn on or off the shoulder.

STYLE 9367X
BLACK

40, 42, 44



STYLE 9367
BLACK

32, 34, 36, 38





Stretch knit, faux-leather chemise with molded-cup underwire bra, adjustable, spiked neck collar, spiked criss-cross front detail, back hook closure, front cutouts and peek-a-boo back with elastic criss-cross straps. (G-String not included.)

STYLE 10591

S, M, L, XL

BLACK



Stretch knit, faux-leather chemise with molded-cup underwire bra, adjustable, spiked neck collar, spiked criss-cross front detail, back hook closure, front cutouts and peek-a-boo back with elastic criss-cross straps. *Plus garment has been modified with additional adjustable straps and side coverage for support.*

STYLE 10591X

1X, 2X, 3X

BLACK



Stretch power-mesh, bandage-style teddy with elastic band details, adjustable shoulder straps, hook & eye back closure, snap crotch and removable garter straps. Shown with Style 0007 thigh highs; sold separately.

STYLE 8600

S, M, L, XL

BLACK





Cross-dyed, scalloped, stretch galloon lace bustier with underwire cups, support boning, adjustable shoulder straps and hook & eye back closure. Includes matching panty with back cut-out heart detail and removable/adjustable garters. Shown with Style 0005 thigh highs; sold separately.

STYLE 9708 S, M, L, XL

BLACK,
WHITE/BLUE



Three-piece, stretch galloon lace garter set. Unlined, underwire bra features a collar and neck strap, adjustable straps and back hook closure; garter belt features seaming details, adjustable garters and back hook closure. Matching lace thong included. Shown with Style 0007 thigh highs; sold separately.

STYLE 10598

S, M, L, XL

BLACK



Embroidered Venice lace and microfiber bustier with zipper front, strappy neckline, adjustable T-back halter straps and elastic back detail. Includes matching G-string with embroidered Venice lace and elastic back details.

STYLE 10519

32, 34, 36, 38

BLACK





Fully-boned bustier with scalloped, stretch lace halter ties, underwire open cups, hook & eye front closure, adjustable lace-up back and removable/adjustable garters. Includes matching lace G-string. Shown with Style 0007 thigh highs; sold separately.

STYLE 9710

32, 34, 36, 38

GARNET/BLACK



STYLE 9710X

40, 42, 44

GARNET/BLACK





Available in Extra Small

Scalloped, eyelash-patterned lace chemise with stretch satin front panel, tall triangle cups, adjustable back straps and adjustable ribbon lace-up back detail.

STYLE 10499

XS, S, M, L, XL

BLACK/ORCHID



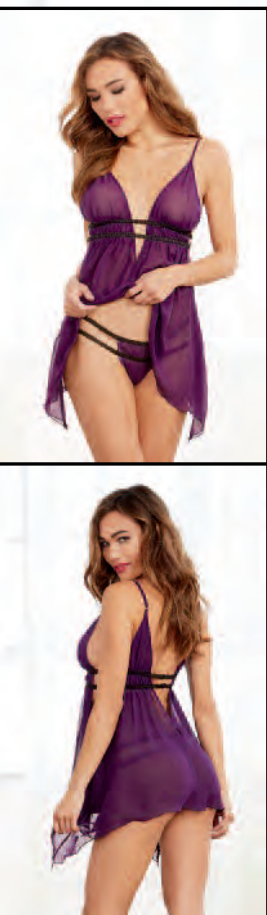
Three-piece set. Scalloped, eyelash-patterned lace bralette features tall triangle cups with stretch satin detail, adjustable shoulder straps and hook & eye back closure; two-layer lace skirt features attached stretch satin garter belt with adjustable garters and hook & eye back closure. Matching lace G-string included. Shown with Style 0005 thigh highs; sold separately.

STYLE 10500

S, M, L, XL

BLACK/ORCHID





Delicate chiffon babydoll with plunging open side detail, adjustable shoulder straps, strappy elastic details and flowy, uneven hem line. Matching G-string included.

STYLE 10505
PLUM

S, M, L, XL



Delicate chiffon romper with plunging open side detail, adjustable shoulder straps, strappy elastic details and snap crotch.

STYLE 10506
PLUM

S, M, L, XL



Stretch, floral-patterned lace tunic with scalloped lace trim, wrap-front styling, adjustable neckline coverage and adjustable satin waist tie. (G-string not included.)

STYLE 10507
PLUM

S, M, L, XL





Stretch satin garter slip with plunging halter neckline, lace overlay, scalloped lace T-back and removable/adjustable garters. Shown with Style 0007 thigh highs; sold separately. *Plus garment has been modified with a higher underbust seam and wider elastics for better support.*

STYLE 10489X
SLATE/BLACK

1X, 2X, 3X



STYLE 10489
SLATE/BLACK

XS, S, M, L, XL





Lace teddy with satin bias trim, strappy plunging neckline, adjustable criss-cross back strap detail and snap crotch.

STYLE 10412

S, M, L, XL

GARNET



Lace chemise with satin bias trim, strappy plunging neckline and adjustable criss-cross back strap detail. Matching lace thong included.

STYLE 10411

S, M, L, XL

GARNET



Lace halter gown with scalloped-edge trim, plunging neckline, high side slit, low back, satin waist detail and adjustable tie-back closures. Matching G-string included.

STYLE 10460

S, M, L, XL

GARNET





Scalloped stretch lace and mesh babydoll with peek-a-boo details, satin elastic trim, adjustable shoulder straps and flyaway open back with hook & eye closure and removable/adjustable garters attached to the bra of the babydoll. Matching lace panty with open-back detail included. Shown with Style 0005 thigh highs; sold separately.

STYLE 10478 S, M, L, XL
LIPSTICK RED



Stretch mesh babydoll with plunging neckline, tall triangle cups and attached, decorative, gold-chain neckline detail. Includes matching G-string with decorative gold-chain back detail and adjustable elastic hip straps.

STYLE 10568 S, M, L, XL
GARNET



Stretch mesh babydoll with plunging neckline, tall triangle cups and attached, decorative, gold-chain neckline detail. Includes matching G-string with decorative gold-chain back detail and adjustable elastic hip straps. *Plus garment has been modified with a higher underbust seam, wider elastics and more fabric shirring for better coverage & support.*

STYLE 10568X 1X, 2X, 3X
GARNET





Stretch lace body-skimming chemise with edge lace trim. Matching G-string included.

STYLE 9818
MAGENTA

S, M, L, XL



Stretch lace body-skimming chemise with edge lace trim. Matching G-string included.

STYLE 9818X 1X/2X, 3X/4X
MAGENTA



Magenta stretch satin plunge-front teddy with black galloon lace overlay, underbust satin tie, high-cut legs, stretch lace thong and adjustable neck & back hook closures.

STYLE 10539 S, M, L, XL
BLACK/MAGENTA

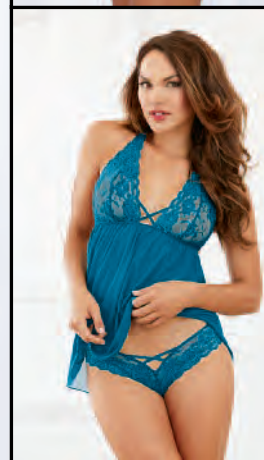




Scalloped, stretch galloon lace and stretch spandex-mesh halter babydoll with tall triangle cups, adjustable neck ties and matching scalloped lace tanga panty.

STYLE 9669X
RASPBERRY,
TEAL, WHITE

1X/2X, 3X/4X



Scalloped, stretch galloon lace and stretch spandex-mesh halter babydoll with tall triangle cups, adjustable neck ties and matching scalloped lace tanga panty.

STYLE 9669
RASPBERRY,
TEAL, WHITE

S, M, L, XL



Silky satin-chemise toga chemise with contrast lace detail, adjustable shoulder straps and open sides with satin ties. G-string not included.

STYLE 9719X
RASPBERRY

1X/2X, 3X/4X



Silky satin-chemise toga chemise with contrast lace detail, adjustable shoulder straps and open sides with satin ties. G-string not included.

STYLE 9719
RASPBERRY

S, M, L, XL





Point d'esprit stretch mesh apron babydoll with stretch lace and satin lining details, underwire cups, ruffled hem, adjustable shoulder straps, hook & eye back closure, removable/adjustable garter straps and tie-back skirt closure. Matching thong included. Shown with Style 0005 thigh highs; sold separately.

STYLE 10089 S, M, L, XL
AQUA/BLACK



Point d'esprit stretch mesh apron babydoll with stretch lace and satin lining details, underwire cups, ruffled hem, adjustable shoulder straps, hook & eye back closure, removable/adjustable garter straps and tie-back skirt closure. Matching thong included. Shown with Style 0005X thigh highs; sold separately.

STYLE 10089X 1X/2X, 3X/4X
AQUA/BLACK



Stretch, scalloped, galloon lace and mesh babydoll with unlined halter bra, peek-a-boo cutout, decorative back lacing, boning and halter-tie closure. Matching G-string included.

STYLE 10554 S, M, L, XL
AQUA





Scalloped stretch lace and microfiber garter slip with underwire cups, strappy elastic cup details, adjustable straps and hook & eye back closures. Features attached, high-waisted skirt with removable/adjustable garters. Shown with Style 0005 thigh highs; sold separately.

STYLE 10497 S, M, L, XL
BLACK/
VINTAGE PINK



Scalloped stretch lace and stretch spandex-mesh babydoll with underwire cups, strappy elastic cup details, adjustable shoulder straps and hook & eye back closure. Matching stretch lace thong included.

STYLE 10498 S, M, L, XL
BLACK/
VINTAGE PINK



Scalloped stretch lace and stretch spandex-mesh babydoll with underwire cups, strappy elastic cup details, adjustable shoulder straps and hook & eye back closure. Matching stretch lace thong included.

STYLE 10498X 1X, 2X, 3X
BLACK/
VINTAGE PINK





Dreamgirl
SWEET DREAMS
s l e e p w e a r

STYLE 11068



Soft, spandex-jersey chemise with scalloped lace edging and adjustable criss-cross back straps.

STYLE 11068X
RASPBERRY, SLATE

1X, 2X, 3X



STYLE 11068
RASPBERRY, SLATE

S, M, L, XL





STYLE 11068



Soft, spandex-jersey chemise with scalloped lace edging and adjustable criss-cross back straps.

STYLE 11068X
RASPBERRY, SLATE

1X, 2X, 3X



STYLE 11068
RASPBERRY, SLATE

S, M, L, XL





STYLES 11074, 11073





Two-piece bralette set. Soft, spandex-jersey halter bralette features lace back, adjustable strap and self-covered elastic band; matching panty features soft, self-covered elastic waistband and lace back detail.

STYLE 11074

S, M, L, XL

SLATE



Soft, spandex-jersey racerback bodysuit with lace detail at back and hips and thong back with snap crotch.

STYLE 11073

S, M, L, XL

BLACK





Soft, spandex-jersey pajama set. Camisole features scalloped lace edging, functioning snap-front closure and lace T-back strap; matching panty features functioning snap-side closures.

STYLE 11071

S, M, L, XL

BLACK



Soft, spandex-jersey chemise with scalloped lace edging and functioning snap-front closure. Chemise is versatile and can be worn with the snaps in the front or back.

STYLE 11070

S, M, L, XL

BLACK





Soft cotton-spandex jersey chemise with contrast scalloped lace neckline inset, adjustable criss-cross straps and low open back with lace inset detail.

STYLE 9703
RED/BLACK

S, M, L, XL



Soft jersey robe with wide satin trim, belt and side pocket.

STYLE 10512
PLUM

S, M, L, XL





Soft, spandex jersey babydoll with strappy satin cup details, adjustable shoulder straps and satin bias hem.

STYLE 10510X
PLUM

1X, 2X, 3X



STYLE 10510
PLUM

S, M, L, XL



Dreamgirl
ROBES



STYLE 11078



Delicate long-sleeved lace kimono robe with eyelash lace trim, wide sleeves and attached satin belt. (G-string not included.)

STYLE 11078X
BLACK, WHITE

1X, 2X, 3X



STYLE 11078
BLACK, WHITE

S, M, L, XL





STYLES 11082, 11070



Soft, spandex-jersey long robe with satin edge binding, side-seam pocket and tie-belt closure.

STYLE 11082

S, M, L, XL

BLACK





Men's charmeuse lounge boxer with side pocket and elastic waistband.
Pair with Women's Style 3717 robe; sold separately.

STYLE 10976
BLACK

M, L, XL, XXL





Women’s charmeuse kimono robe with attached belt. Includes matching chemise with adjustable criss-cross straps and low back.
Matching padded lingerie hanger included.

STYLE 3717X 1X/2X, 3X/4X
BLACK, RED, WHITE




STYLE 3717 S, M, L
BLACK, RED, WHITE






Chiffon and stretch lace short kimono robe with 3/4 length sleeves and attached chiffon sash. Matching stretch lace cheeky panty included.

STYLE 8740 S, M, L, XL
BLACK,
PEARL WHITE 




Chiffon and stretch lace short kimono robe with 3/4 length sleeves and attached chiffon sash. Matching stretch lace cheeky panty included.

STYLE 8740X 1X/2X, 3X/4X
BLACK,
PEARL WHITE 



Men's charmeuse lounge pant with drawstring waistline.

STYLE 3863 S, M, L, XL,
BLACK XXL 



Three-piece chiffon robe set. Robe features shirt styling with collar, French cuffs, shirttail hem and button-front closure; bralette features adjustable halter ties and back hook closure. Matching thong and padded lingerie hanger included.

STYLE 4820X
WHITE

1X, 2X, 3X



STYLE 4820
WHITE

S, M, L



Dreamgirl

NUPTIALS



STYLE 11023



Stretch satin and galloon lace garter slip with attached faux-pearl collar, underwire-molded nude illusion cups, seam detailing, attached/adjustable garters and galloon lace back with keyhole detail and adjustable back & neck closures. Shown with Style 0007 thigh highs; sold separately. (G-string not included.)

STYLE 11023
WHITE

XS, S, M, L, XL





STYLE 11025



Eyelash lace halter teddy with high tie-neck closure, low back with eyelash lace framing and snap crotch.

STYLE 11025
WHITE

XS, S, M, L, XL





Delicate long-sleeved lace kimono robe with eyelash lace trim, wide sleeves and attached satin belt. (G-string not included.)

STYLE 11078 S, M, L, XL
BLACK, WHITE



STYLE 11078X 1X, 2X, 3X
BLACK, WHITE





Two-piece set. Mosaic stretch lace teddy features open G-string back with adjustable criss-cross straps; sheer mesh maxi skirt features tie-front closure. *Plus garment has been modified with a higher neckline and full lace back for additional coverage.*

STYLE 10996X
BLACK, WHITE

1X, 2X, 3X



STYLE 10996
BLACK, WHITE

S, M, L, XL





STYLE 10996X





Scalloped, stretch galloon lace and stretch spandex-mesh halter babydoll with tall triangle cups, adjustable neck ties and matching scalloped lace tanga panty.

STYLE 9669

S, M, L, XL



RASPBERRY, TEAL, WHITE

STYLE 9669X

1X/2X, 3X/4X



RASPBERRY, TEAL, WHITE



Stretch lace bustier with molded, ruched underwire cups, boning, satin waist ribbon, small bow details, adjustable lace Euro straps, back hook closures and attached/adjustable garters. Matching thong included. Shown with Style 0005 thigh highs; sold separately.

Plus size has been modified with wider bra elastics and additional back coverage.

STYLE 10520X

40, 42, 44

WHITE



STYLE 10520

32, 34, 36, 38

WHITE





Chiffon and stretch lace short kimono robe with 3/4 length sleeves and attached chiffon sash. Matching stretch lace cheeky panty included.

STYLE 8740

S, M, L, XL

BLACK,
PEARL WHITE



Chiffon and stretch lace short kimono robe with 3/4 length sleeves and attached chiffon sash. Matching stretch lace cheeky panty included.

STYLE 8740X

1X/2X, 3X/4X

BLACK,
PEARL WHITE



Stretch lace gown with scalloped lace trim, tall triangle cups, adjustable halter ties, body-skimming fit, dramatic back train and lace T-back strap. Matching lace G-string included.

STYLE 10131

S, M, L, XL

PEARL WHITE





Stretch lace gown with scalloped lace trim, tall triangle cups, adjustable halter ties, body-skimming fit, dramatic back train and lace T-back strap. Matching lace G-string included. *Plus garment has been modified with a higher underbust seam and wider elastics for better support.*

STYLE 10131X 1X, 2X, 3X
PEARL WHITE



Charmeuse robe set with attached belt and “Bride” silver heat transfer on back. Includes matching babydoll with adjustable low back and padded lingerie hanger.

STYLE 6278
WHITE

S, M, L



Charmeuse robe set with attached belt and “Bride” silver heat transfer on back. Includes matching babydoll with adjustable low back and padded lingerie hanger.

STYLE 6278X 1X/2X, 3X/4X
WHITE





Satin charmeuse chemise with lace triangle cups and lace front inset, scalloped lace trim, satin bows and ultra-low back with criss-cross adjustable straps. Matching thong included.

STYLE 8718

S, M, L, XL



WHITE



Cross-dyed, scalloped, stretch galloon lace bustier with underwire cups, support boning, adjustable shoulder straps and hook & eye back closure. Includes matching panty with back cut-out heart detail and removable/adjustable garters. Shown with Style 0005 thigh highs; sold separately.

STYLE 9708

S, M, L, XL



BLACK,
WHITE/BLUE

Dreamgirl
BRAS



STYLES 10495, 10496



Satin open-cup underwire shelf bra with zig-zag topstitch detailing, stretch mesh back, adjustable shoulder straps and hook & eye back closure. Shown with 9382 garter belt; sold separately. (Pasties and G-string not included.)

STYLE 9385 32, 34, 36, 38
BLACK



Stretch lace, open-cup underwire shelf bra with vinyl "X" design, adjustable shoulder straps and hook & eye back closure. Shown with Style 9382 garter belt; sold separately. (Pasties and G-string not included.)

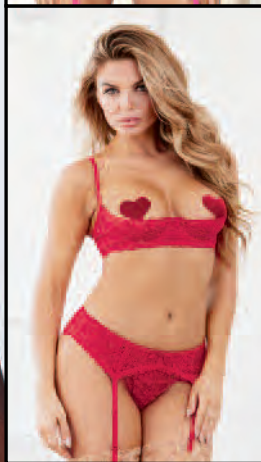
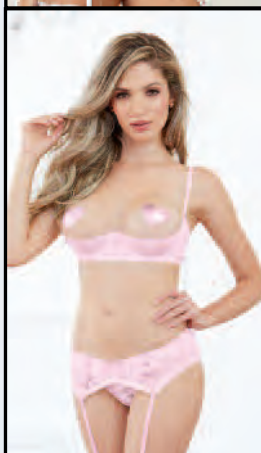
STYLE 9384 32, 34, 36, 38
BLACK



Underwire, open-cup shelf bra with embroidered Venice lace trim, mesh & satin details, adjustable straps and hook & eye back closure. Shown with Styles 10496 garter belt and 0007 thigh highs; sold separately. (G-string not included.)

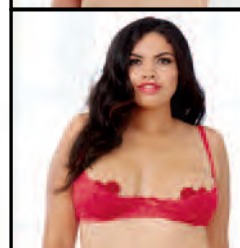
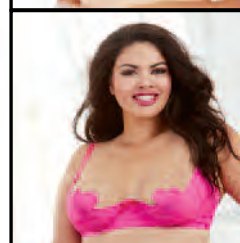
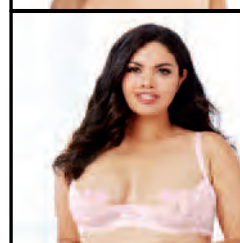
STYLE 10495 32, 34, 36, 38
BLACK, WHITE





Stretch lace, open-cup underwire shelf bra with adjustable shoulder straps and hook & eye back closure. Shown with Styles 8735 garter belt, 1376 thong and 0005 thigh highs; sold separately. (Pasties not included.)

STYLE 9386 32, 34, 36, 38
BLACK, HOT PINK, RED, VINTAGE PINK, WHITE



Stretch lace, open-cup underwire shelf bra with adjustable shoulder straps and hook & eye back closure. Shown with Styles 8735X garter belt and 1376X thong; sold separately. (Pasties not included.)

STYLE 9386X 40, 42, 44
BLACK, HOT PINK, RED, VINTAGE PINK, WHITE



Scalloped, stretch lace open-cup underwire shelf bra with contrast bow, adjustable shoulder straps and hook & eye back closure. Shown with Style 7177 boyshort panty; sold separately. (Pasties not included.)

STYLE 9763 32, 34, 36, 38
BLACK



Dreamgirl
BODY

b l i n g



STYLE 11064



Fully-adjustable, delicate, double-breasted body chain with lobster-hook closures.
Designed to be worn over garments as statement body jewelry or on its own. (Pasties not included.)

STYLE 11064
YELLOW GOLD

O/S





Exclusively-Dreamgirl harness choker with cleverly-designed elastic snap loop that secures around most bras at center front.

STYLE 11075
GOLD, GUNMETAL,
SILVER

O/S





Exclusively-Dreamgirl harness choker with cleverly-designed elastic snap loop that secures around most bras at center front.

STYLE 11075
GOLD, GUNMETAL,
SILVER

O/S



Exclusively-Dreamgirl harness choker with cleverly-designed elastic snap loop that secures around most bras at center front.

STYLE 11075
GOLD, GUNMETAL,
SILVER

O/S



Dreamgirl

RED

diamond



STYLE 11033



STYLE 11033



Stretch mesh babydoll with cutout midsection, contrast lace overlay, contrast elastic detailing and adjustable shoulder & halter straps.
Matching lace G-string included.





Strappy, stretch galloon lace and mesh babydoll with high neckline, unlined cups, ring detail and eyelash lace trim. Matching G-string included.

STYLE 11034X
BLACK

O/S QUEEN



STYLE 11034
BLACK

O/S





Seamless, stretch lace collared chemise with plunge-front neckline and racer back with functioning zipper detail.

STYLE 11027
BLACK

O/S



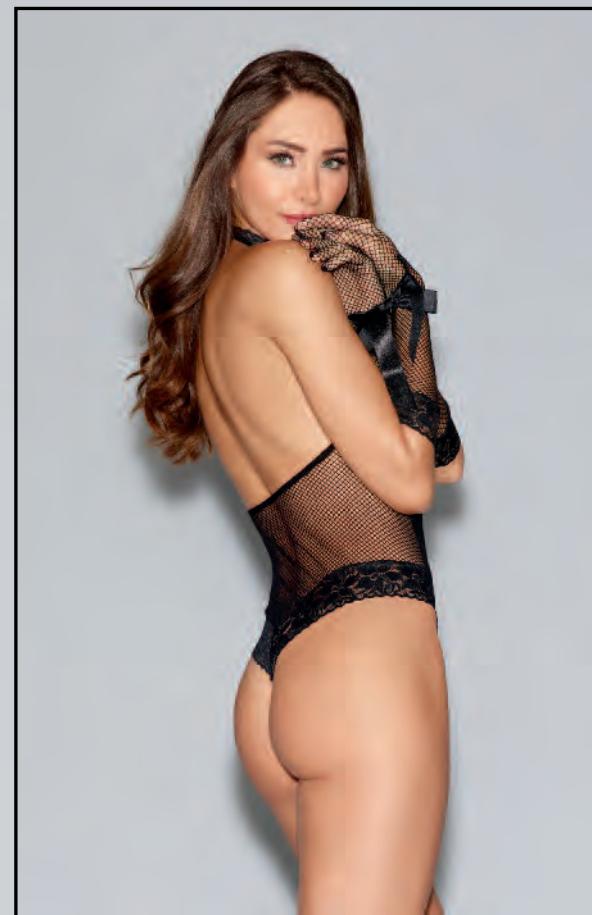
STYLE 11027X
BLACK

O/S QUEEN





Wrist Restraints Included



Seamless fishnet collared teddy with plunge-front halter neckline, tie-neck closure, lace trim and G-string back.
Matching fishnet gloves with ribbon-tie restraint included.

STYLE 11040

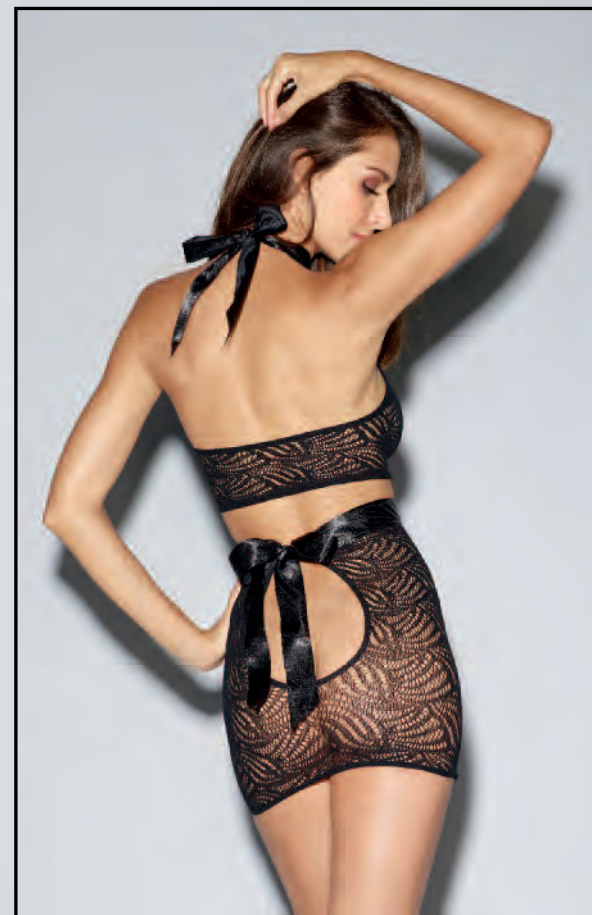
O/S

BLACK





STYLE 11029



Two-piece set. Seamless, mosaic stretch lace bralette features halter neck with ribbon-tie closure; matching high-waist skirt features back keyhole detail and ribbon-tie closure.

STYLE 11029

O/S

BLACK





STYLE 11037



Three-piece fishnet garter set. Unlined halter bralette features criss-cross adjustable neckline, large center keyhole, silver ring details and adjustable back closure; garter belt features criss-cross waistline, silver ring details and adjustable back closure.

Matching G-string included. Shown with Style 0007 thigh highs; sold separately.

STYLE 11037

O/S



BLACK



Stretch mesh and microfiber garter slip with tie-back halter neckline, functioning front-zipper detail and removable/adjustable garters. Shown with Style 0007 thigh highs; sold separately. (Thong not included.)

STYLE 10572
BLACK

O/S



STYLE 10572X
BLACK

O/S QUEEN





Strappy, mosaic stretch lace teddy with unlined underwire cups, adjustable straps, back-hook closure and neck collar with tie-back closure. Attached panty features adjustable waistband with cutout details and large keyhole back.

STYLE 11035

O/S



EGGPLANT



Stretch lace garter slip with unlined cups, scalloped lace trim, attached garters and low, strappy T-back. Garter slip features strappy neckline with adjustable collar and ring detail. Shown with Style 0007 thigh highs; sold separately. (G-string not included.)

STYLE 11028

O/S



EGGPLANT



Stretch lace garter slip with plunging neckline, unlined triangular cups, princess seam detail, lace trim and low-cut back with adjustable criss-cross straps. Shown with Style 0007 thigh highs; sold separately. (G-string not included.)

STYLE 11031
MAGENTA

O/S



Stretch lace and stretch mesh babydoll with scalloped lace neckline detail and adjustable halter & shoulder straps. Matching lace tanga panty included.

STYLE 11032
GARNET

O/S





STYLE 3894

Dreamgirl
MOST LOVED
red diamond



Stretch lace bra top and matching strappy boy short. *Plus garment has been modified with larger cup and short coverage and added elastic for better support.*

STYLE 3894

O/S



BLACK

STYLE 3894X

O/S QUEEN



BLACK



Stretch lace halter teddy with plunging neckline, adjustable halter ties and large heart cut-out detail on back.
Plus garment has been modified with higher neckline.

STYLE 8694X
BLACK, RED,
WHITE

O/S QUEEN



STYLE 8694
BLACK, RED,
WHITE

O/S





Two-piece bralette set. Scalloped, stretch galloon lace bralette features high-neck halter and tie-back closure. Matching strappy stretch lace panty included.

STYLE 10564

O/S



MIDNIGHT



Stretch galloon lace teddy with unlined triangle cups, peek-a-boo cutouts, open crotch, criss-cross adjustable straps and G-string back.

STYLE 10551

O/S



GARNET



Two-piece, strappy garter play set. Unlined lace bra features decorative rings, adjustable shoulder & back straps, back hook closures and attached/adjustable garters. Matching thong included.
Shown with Style 0007 thigh highs; sold separately.

STYLE 10552

O/S

GARNET



Microfiber and stretch mesh garter slip with underwire open-cup detail, embroidered Venice lace trim and neck piece with attached collar strap detail. Garter slip features tie-back closures and removable/adjustable garters. Shown with Style 0005 thigh highs; sold separately. (G-string not included.)

STYLE 10571

O/S

GARNET





Sheer, mesh, Grecian-style gown with floor-length hem, plunging neckline, allover shirring, cut-out sides and open back with criss-cross strap details. Dress features versatile front panel that can be worn down or used to create an extra wrap around the body that ties in back. Matching G-string included. *Plus garment has added side coverage.*

STYLE 10593
BLACK

O/S



STYLE 10593X
BLACK

O/S QUEEN





Stretch lace teddy with scalloped lace trim, plunging neckline, adjustable halter ties and functioning front-to-back zipper detail.

STYLE 10565
PLUM

O/S



Stretch mesh babydoll with embroidered Venice lace trim, open-cup detail, ribbon accents and adjustable halter ties. Matching mesh thong and lace glovelettes with ribbon-tie restraint included.

STYLE 10152
PLUM/BLACK

O/S



Stretch mesh babydoll with embroidered Venice lace trim, fabric open-cup detail, ribbon accents and adjustable halter ties. Matching mesh thong and lace glovelettes with ribbon-tie restraint included. *Plus garment has been modified with more opaque fabric.*

STYLE 10152X
PLUM/BLACK

O/S QUEEN





Stretch lace teddy with plunging neckline, open back, open crotch, eyelash lace trim and contrast organza ribbon wraparound waist and neck ties.

STYLE 10596X O/S QUEEN
BLACK/HOT PINK



Scalloped, stretch lace halter teddy with contrast ribbon details, tie-back closures and open-back panty. Matching lace and ribbon wrist restraints included.

STYLE 9726
BLACK/FUCHSIA

O/S



Stretch lace teddy with plunging neckline, open back, open crotch, eyelash lace trim and contrast organza ribbon wraparound waist and neck ties.

STYLE 10596
BLACK/HOT PINK

O/S





Scalloped eyelash-patterned lace halter apron babydoll with ruffled organza trim, tie-back closures and attached elastic garter straps. Matching heart cut-out panty included. Shown with Style 0005 thigh highs; sold separately.

STYLE 9725
BLACK

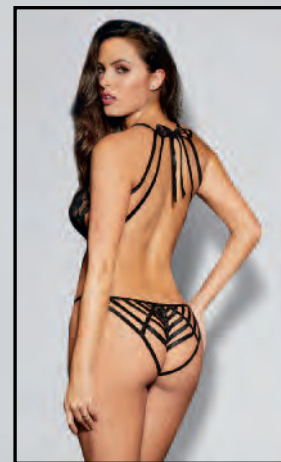
O/S



Scalloped eyelash-patterned lace halter apron babydoll with ruffled organza trim, tie-back closures and attached elastic garter straps. Matching heart cut-out panty included. Shown with Style 0005X thigh highs; sold separately.

STYLE 9725X
BLACK

O/S QUEEN



Stretch lace halter teddy with elastic strappy back panty detail. Matching lace eye mask included.

STYLE 7993
BLACK

O/S





Stretch mesh halter babydoll with contrast lace detail, ribbon accent and adjustable tie-back closures. Matching scalloped lace G-string included.

STYLE 9732

LIPSTICK RED/BLACK,
ORCHID/BLACK

O/S



Stretch mesh halter babydoll with contrast lace detail, ribbon accent and adjustable tie-back closures. Matching scalloped lace G-string included.

STYLE 9732X

LIPSTICK RED/BLACK,
ORCHID/BLACK

O/S QUEEN



Wrist Restraints Included

Stretch mesh halter babydoll with stretch lace cups, adjustable neck ties, ruffle hem and flyaway back. Matching open-crotch lace tanga panty and wrist restraints with silver “Naughty” details included.

STYLE 9120

RED

O/S



Wrist Restraints Included

Stretch mesh halter babydoll with stretch lace cups, adjustable neck ties, ruffle hem and flyaway back. Matching open-crotch lace tanga panty and wrist restraints with silver “Naughty” details included.

STYLE 9120X

RED

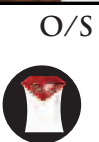
O/S QUEEN





Scalloped, stretch, galloon lace bustier with underwire open cups, adjustable shoulder straps, strappy back detail and attached/adjustable garters. Matching open-crotch G-string included. Shown with Style 0005 thigh highs; sold separately.

STYLE 10561
LIPSTICK RED,
WHITE



Scalloped, stretch, galloon lace bustier with underwire open cups, adjustable shoulder straps, mesh back detail and attached/adjustable garters. Matching open-crotch G-string included. Shown with Style 0005X thigh highs; sold separately.

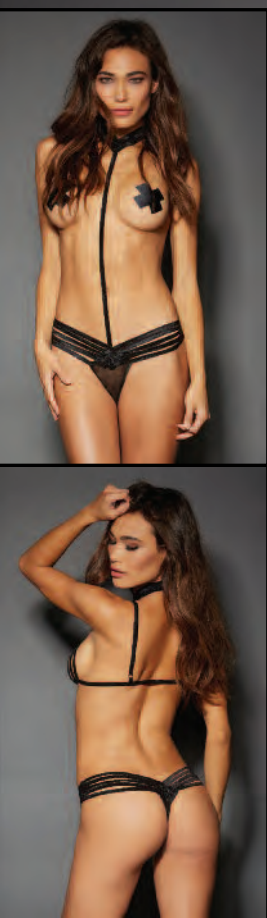
STYLE 10561X
LIPSTICK RED,
WHITE



Semi-sheer, stretch mesh tunic with $\frac{3}{4}$ -length sleeves, off-the-shoulder neckline and contrast stretch lace trim. Matching G-string included.

STYLE 8084
TURQUOISE/BLACK





Two-piece set. Strappy elastic bralette features adjustable shoulder straps and back hook closure; strappy elastic thong features attached body strap and neck collar with hook & eye closure. Style can be worn with or without bralette for a versatile look. (Pasties not included.)

STYLE 10563

O/S

BLACK



Three-piece garter set. Stretch fishnet crop top features thumb holes at sleeve hem; fishnet garter belt features wide elastic waistband and attached/adjustable garters. Matching G-string included. Shown with Style 0007 thigh highs; sold separately. (Pasties not included.)

STYLE 10562

O/S

BLACK



Wet-look collared teddy with gunmetal o-rings, draping chains, G-string back and back-neck velcro collar closure. (Pasties not included.)

STYLE 10470

O/S

BLACK



Dreamgirl

FETISH

diamond



STYLE 11054



Stretch fishnet and elastic teddy with strappy collared neckline, silver rings, stud details and strappy open back.

STYLE 11053

O/S



BLACK



Stretch fishnet and elastic collared chemise with open cups, open back, criss-cross silver chains and silver ring details. Matching G-string included. (Pasties not included.)

STYLE 11055

O/S



BLACK



Two-piece set. Open-cup fishnet teddy with attached velcro collar, open-back detail and separate elastic body harness that restrains the arms to the side of the body. (Pasties not included.)

STYLE 11058

O/S

BLACK





Stretch knit, faux-leather harness chemise with adjustable collar, open cups, strappy elastic open back, silver rings and stud details. Novelty nipple clamps included. (Pasties and G-string not included.)

STYLE 11054
BLACK

O/S



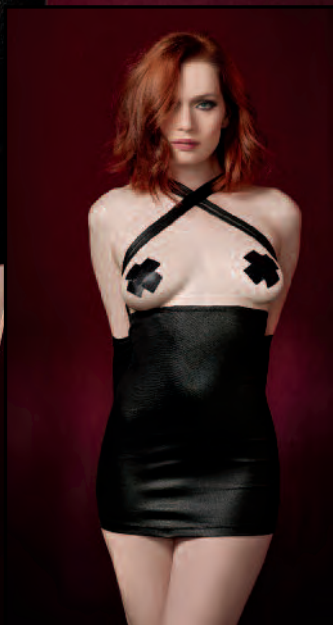
STYLE 11054X
BLACK

O/S QUEEN





Attached Arm Restraints



Stretch knit, faux-leather chemise with adjustable criss-cross wide straps, open cups and strappy elastic open back with attached zip-up arm restraint. (Pasties and G-string not included.)

STYLE 11052

O/S

BLACK



Stretch knit, faux-leather teddy with plunging halter neckline, functioning front-to-back zipper, criss-cross elastic details, tie-back closure and thong back. Matching choker necklace with zipper detail included.

STYLE 11059

O/S

BLACK





Two-piece, faux-leather set. Stretch knit, high-neck crop top features functioning clasp front and elastic T-back strap; stretch knit, high-waisted skirt features elastic strap back detail. (G-string not included.)

STYLE 10574

O/S



BLACK

STYLE 10574X

O/S QUEEN



BLACK



Stretch mesh and elastic bustier with strappy high-neck details, silver rings & studs, attached garters and strappy elastic back with adjustable hook closures. Matching G-string included. Shown with Style 0007 thigh highs; sold separately.

STYLE 10559

O/S

BLACK



Stretch knit, faux-leather garter slip with collared halter, fixed elastic lace-up front & back, adjustable back-neck velcro closure and attached front garters. Matching G-string included. Shown with Style 0007 thigh highs; sold separately.

STYLE 10558

O/S

BLACK





Stretch knit, faux-leather knit halter dress with open cups, adjustable neck ties and open-back elastic “X” details with silver rings. Matching thong, choker and wrist restraints included.

STYLE 9156

BLACK

O/S



Vinyl-like, microfiber, strappy teddy with collar, metal ring detail, pyramid stud trim and back tie closure. Matching novelty leash included.

STYLE 7989

BLACK

O/S



Fishnet halter teddy with neckline stud details and open, G-string back with functioning clasp detail. Includes matching studded wrist restraints with elastic opening and functioning clasp detail.

STYLE 10575

BLACK

O/S





Wrist Restraints Included

Stretch mesh halter garter slip with elastic strappy open back, silver ring at neck, removable chain with attached wrist restraints, removable/adjustable garters and back-neck velcro closure. Matching G-string included. Shown with Style 0007 thigh highs; sold separately.

STYLE 9738 O/S
BLACK



Stretch knit, faux leather halter bustier with zipper front, attached/adjustable garters, stretch mesh back and strappy buckle neckline with velcro closure. Matching G-string included. Shown with Style 0007 thigh highs; sold separately.

STYLE 10157
BLACK

O/S



Stretch knit, faux leather halter bustier with zipper front, attached/adjustable garters, stretch mesh back and strappy buckle neckline with velcro closure. Matching G-string included. Shown with Style 0007X thigh highs; sold separately.

STYLE 10157X O/S QUEEN
BLACK



Dreamgirl
BEDROOM
c o s t u m e s



STYLE 11051



Nurse-themed, stretch mesh chemise with short sleeves, functioning front zipper and shirt collar detail.
Includes tie-on nurse hat and novelty stethoscope. (G-string not included.)

STYLE 11051X
“ER HOTTIE”

O/S QUEEN



STYLE 11051
“ER HOTTIE”

O/S





Two-piece, beer-babe-themed set. Stretch mesh, peasant-style crop top features shirring detail and off-the-shoulder neckline; mini skirt features attached suspenders and apron with button accents. Matching hair ribbons included.

STYLE 11045

O/S



“BEER GARDEN BABE”

STYLE 11045X

O/S QUEEN



“BEER GARDEN BABE”



Two-piece, schoolgirl-themed set. Knit crop top features lace neckline detail and tie-front closure; pleated mini skirt features plaid print and side slit detail. Matching hair ribbons and novelty glasses included.

STYLE 11046X
“HOMEROOM HOTTIE”

O/S QUEEN



STYLE 11046
“HOMEROOM HOTTIE”

O/S





Gingham-printed, stretch mesh apron babydoll with contrast ruffles, satin tie-back closure and adjustable criss-cross back straps with decorative buttons. Matching satin hair bow and panty with ruffled waistband and ruffled, shirred back included.

STYLE 11050

O/S



“KANSAS CUTIE”

STYLE 11050X

O/S QUEEN



“KANSAS CUTIE”



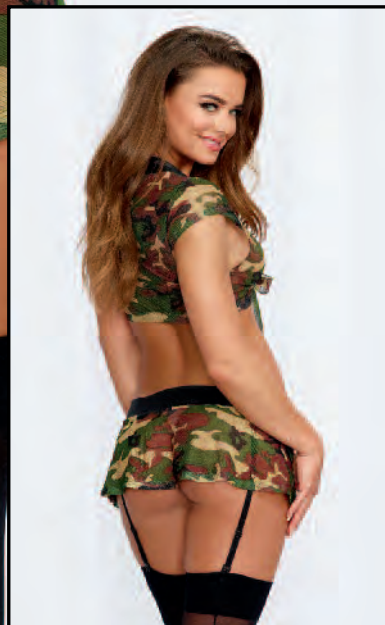
Two-piece, country-themed set. Stretch knit apron “overalls” feature adjustable straps, attached belt and pocket details; peasant-style crop top features gingham print and ruching detail. (Hair ribbons not included.)

STYLE 11079

O/S



“FARMER’S DAUGHTER”



Two-piece, Army-themed set. Stretch mesh crop top features camouflage print and tie-front closure; matching mini skirt features attached/adjustable garters. Dog tag necklace included. Shown with Style 0007 thigh highs; sold separately. (Thong not included.)

STYLE 10588

O/S



“BOOTY CAMP”



Office-themed, stretch mesh chemise with halter neckline, shirt collar detail, pinstriped skirt, velcro neck closure and side slits with button accents. Matching tie and novelty glasses included.

STYLE 11043

O/S



“NAUGHTY INTERN”

STYLE 11043X

O/S QUEEN



“NAUGHTY INTERN”



Two-piece, executive-themed set. Stretch mesh halter bralette features shirt collar detail and velcro neck closure; stretch knit, high-waist garter skirt features attached elastic suspenders, button accents, attached/adjustable garters, lace hem and back slit detail. Matching tie and novelty glasses included. Shown with Style 0007 thigh highs; sold separately.

Goddess-themed stretch mesh gown with high side slit, side shirring detail, gold coin trim and gold lamé one-shoulder strap. Matching choker necklace and leg garter included. (G-string not included.)

STYLE 11042 O/S
 “SEXY EXECUTIVE”

STYLE 11041 O/S
 “LOVE GODDESS”



Two-piece, feline-themed set. Sheer mesh halter bralette features marabou trim, bow accent and tie-back closures; matching mini skirt features attached marabou tail. Includes tie-on kitty ears and collar with bell detail. (G-string not included.)

STYLE 11048

O/S



“FRISKY KITTY”



Feline-themed, shiny, stretch knit teddy with unlined triangular cups, sequin-detailed strapping, silver buckles, stretch elastic sides and tie-back closure. Matching fingerless gloves, cat ears and mask included. Shown with Style 0007 thigh highs; sold separately.

STYLE 11044

O/S



“FIERCE FELINE”



Three-piece set. Gold lamé halter bra features gold coin trim and adjustable back ties; matching thong features attached long mesh skirt with open sides and coin trim detail. Matching neck collar with chain leash included.

STYLE 9320
“HAREM SLAVE”

O/S



Glossy, stretch-knit, two-piece set. Halter crop top features zipper detail and adjustable straps; matching mini skirt features front pleats and faux buckle details. Includes two masks and black & red hair ribbons.

STYLE 10585
“NAUGHTY
HARLEQUIN”

O/S



Glossy, stretch-knit, two-piece set. Halter crop top features zipper detail and adjustable straps; matching mini skirt features front pleats and faux buckle details. Includes two masks and black & red hair ribbons.

STYLE 10585X
“NAUGHTY
HARLEQUIN”

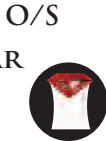
O/S QUEEN





Stretch mesh halter crop top with attached collar, tie detail, Velcro neck closure and matching plaid miniskirt with button and slit details. Ruler paddle with “Enjoy Every Inch” screen print and plastic novelty glasses included.

STYLE 10168
“EXTRA-CURRICULAR
CUTIE”



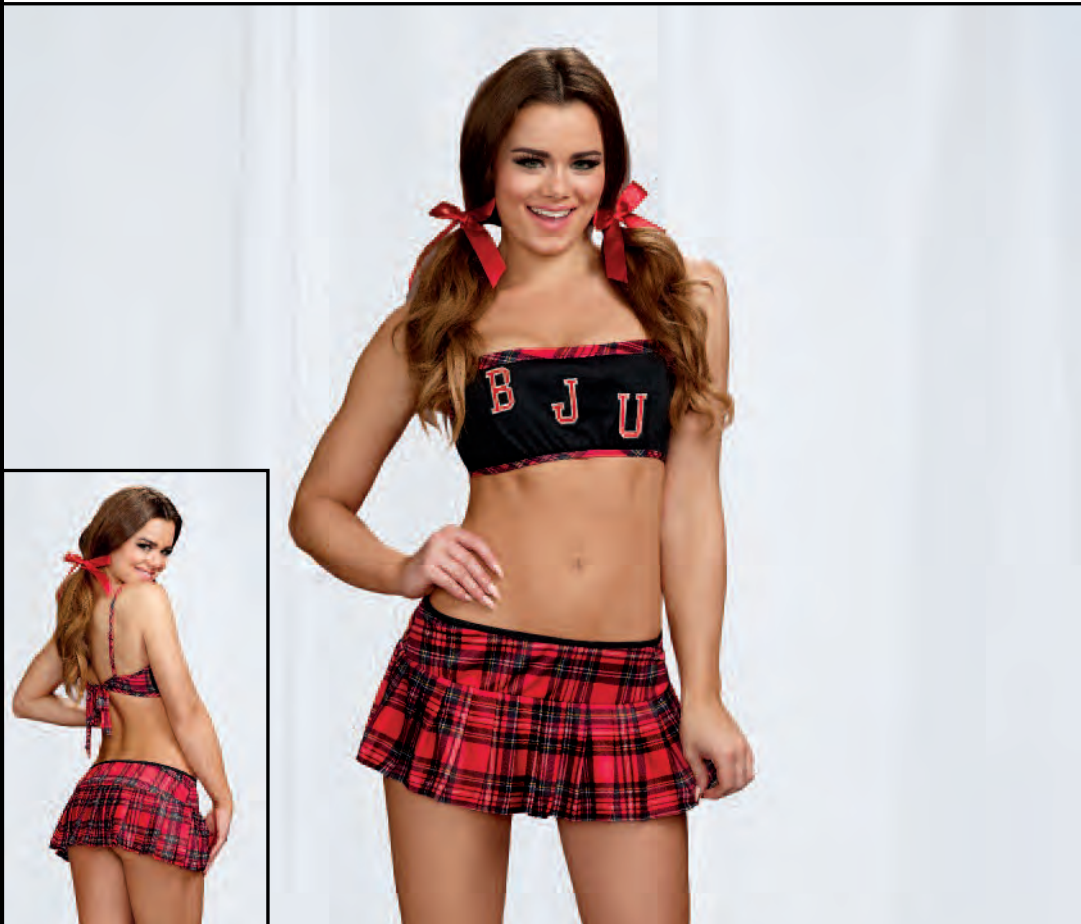
Stretch mesh halter crop top with attached collar, tie detail, Velcro neck closure and matching plaid miniskirt with button and slit details. Ruler paddle with “Enjoy Every Inch” screen print and plastic novelty glasses included.

STYLE 10168X
“EXTRA-CURRICULAR
CUTIE”



Stretch knit cropped tank top with “Talk nerdy to me” screen print and pleated plaid skirt with elastic suspenders. Matching thong, plaid bowtie and plastic glasses included. Shown with Style 0007 thigh highs; sold separately.

STYLE 9767
“NERDY TALK”



Knit top with “BJU” appliqué letters and pleated plaid skirt. Includes matching thong and hair ribbons.

STYLE 7301
“BJ UNIVERSITY”





Two-piece set. Strapless vest-look knit top features crest patch, decorative gold buttons and back tie closure; pleated plaid skirt features decorative button tab detail. Matching thong and neck tie included.

STYLE 8680
"TEACHER'S PET"

O/S



Stretch mesh, schoolgirl-themed chemise with collared halter neckline, attached plaid tie, back velcro closure and attached plaid skirt with slit details. Novelty glasses included.

STYLE 10602
"SCHOOLGIRL
TEASE"

O/S



Stretch mesh, schoolgirl-themed chemise with collared halter neckline, attached plaid tie, back velcro closure and attached plaid skirt with slit details. Novelty glasses included.

STYLE 10602X
"SCHOOLGIRL
TEASE"

O/S QUEEN





Lace apron with ruffle details, attached elastic garters, adjustable criss-cross back straps and ribbon waist tie. Matching lace G-string, maid cap, neck ribbon and feather tickler included. Shown with Style 0005 thigh highs; sold separately.

STYLE 9766
"MAID TO TEASE"

O/S



Lace apron with ruffle details, attached elastic garters, adjustable criss-cross back straps and ribbon waist tie. Matching lace G-string, maid cap, neck ribbon and feather tickler included. Shown with Style 0005X thigh highs; sold separately.

STYLE 9766X O/S QUEEN
"MAID TO TEASE"



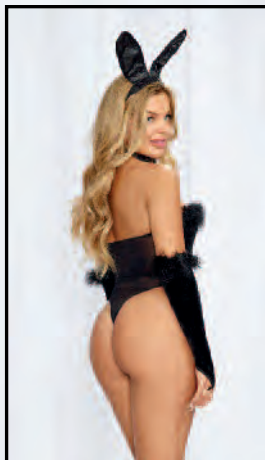
Stretch knit, underwire teddy with ruffled lace details, adjustable shoulder straps and open crotch. Maid cap, ribbon neck choker and apron with "Dirty" embroidery, attached/adjustable garters and tie-back ribbon closure included. Shown with Style 0005 thigh highs; sold separately.

STYLE 10590
"FRENCH MAID
FANTASY"

O/S



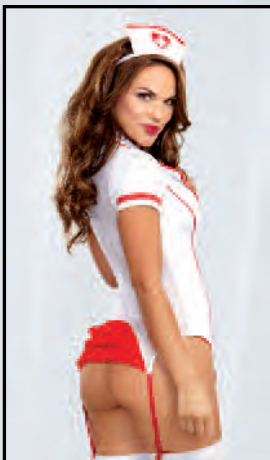
Open Crotch



Strapless, stretch velvet teddy with marabou trim neckline and sheer stretch mesh thong back. Marabou-trimmed, stretch velvet fingerless gloves, bowtie and bunny ears included.

STYLE 10175
"AFTER EIGHT
BUNNY"

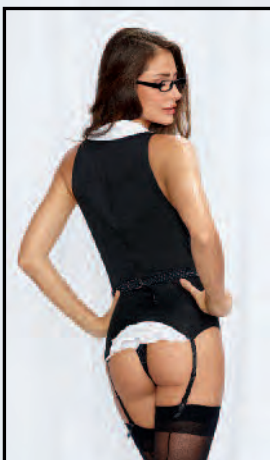
O/S



Stretch jersey and stretch mesh short-sleeved garter slip with contrast piping, lace-up ribbon front, contrast back ruffles and attached/adjustable garter straps. Matching G-string and nurse cap included. Shown with Style 0007 thigh highs; sold separately.

STYLE 9774
"TRIAGE TRIXIE"

O/S



Pinstriped, stretch knit vest-style garter slip with attached sheer chiffon shirt collar and lapel, faux double-breasted button detail, ruffled back hem and functional back buckle. Matching thong and plastic glasses included. Shown with Style 0005X thigh highs; sold separately.

STYLE 8014X O/S QUEEN
"WORKING LATE"



Pinstriped, stretch knit vest-style garter slip with attached sheer chiffon shirt collar and lapel, faux double-breasted button detail, ruffled back hem and functional back buckle. Matching thong and plastic glasses included. Shown with Style 0007 thigh highs; sold separately.

STYLE 8014
"WORKING LATE"

O/S



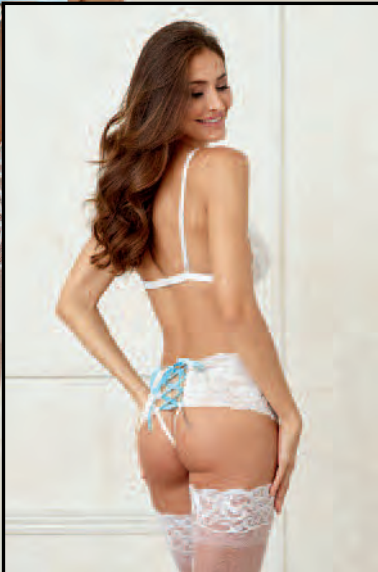
Dreamgirl

W H I T E

d i a m o n d



STYLE 10930



Two-piece bralette set. Stretch galloon lace bralette features unlined triangular cups, satin bow, adjustable straps and back-hook closure; open-back cheeky garter panty features satin ribbon lace-up back detail and attached front garters with satin bows. Shown with Style 0005 thigh highs; sold separately.

STYLE 10930 O/S
WHITE



Open Crotch



Scalloped, stretch, galloon lace bustier with underwire cups, adjustable shoulder straps, strappy back detail and attached/adjustable garters. Matching open-crotch G-string included. Shown with Style 0005 thigh highs; sold separately.

STYLE 10561
LIPSTICK RED,
WHITE



Open Crotch



Scalloped, stretch, galloon lace bustier with underwire cups, adjustable shoulder straps, mesh back and attached/adjustable garters. Matching open-crotch G-string included. Shown with Style 0005X thigh highs; sold separately.

STYLE 10561X O/S QUEEN
LIPSTICK RED,
WHITE





Delicate allover lace tie-front babydoll with empire waist, scalloped eyelash lace neckline, cap sleeves and hem. Matching G-string included.

STYLE 11063
WHITE

O/S



STYLE 11063X
WHITE

O/S QUEEN





Open Crotch

Stretch lace and heart-jacquard mesh babydoll with underwire demi cups, strappy pearl details, tie-back halter neckline and flyaway open back. Matching open-crotch G-string with pearl back detail included.

STYLE 11061X
WHITE

O/S QUEEN



STYLE 11061
WHITE

O/S





Stretch lace halter garter slip with unlined cups, plunge front, attached rhinestone collar detail, sexy low back and removable/adjustable garters. Matching G-string included. Shown with Style 0007 thigh highs; sold separately. *Plus garment has been modified with a higher back.*

STYLE 11024

O/S



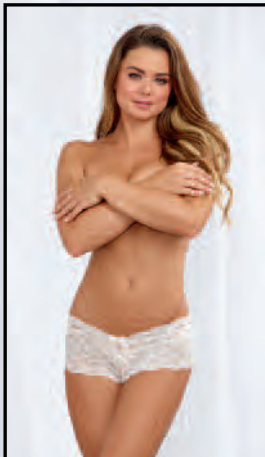
WHITE

STYLE 11024X

O/S QUEEN



WHITE



Heart stretch lace panty with open crotch and large open-back heart detail.

STYLE 1442
WHITE

S, M, L, XL
1X, 2X, 3X



Stretch lace halter teddy with plunging neckline, adjustable halter ties and large heart cut-out detail on back.

STYLE 8694
BLACK, RED,
WHITE

O/S



Stretch lace halter teddy with plunging neckline, adjustable halter ties and large heart cut-out detail on back. *Plus garment has been modified with higher neckline.*

STYLE 8694
BLACK, RED,
WHITE

O/S QUEEN





Stretch galloon lace and heart jacquard mesh babydoll with flyaway back, front cutout, high neck, eyelash lace trim, tie-neck and tie-back closures. Matching lace panty with peek-a-boo back included.

STYLE 10582
WHITE

O/S



Stretch galloon lace and heart jacquard mesh babydoll with flyaway back, front cutout, high neck, eyelash lace trim, tie-neck and tie-back closures. Matching lace panty with peek-a-boo back included.

STYLE 10582X O/S QUEEN
WHITE



Stretch lace T-back chemise with pearl strand accent, scalloped stretch lace trim edges, ruched back detail and contrast satin bows. Matching lace thong included.

STYLE 9742
WHITE

O/S



Stretch, scalloped, galloon lace teddy with plunging halter neckline, fluttery chiffon ruffles at hip, peek-a-boo back, open crotch, tie-neck closure and satin tie-back bow at waist.

STYLE 10583
WHITE

O/S





Stretch lace garter belt with scalloped hem and hook & eye back closure. Shown with Style 0005 thigh highs; sold separately. (Thong not included.)

STYLE 8735
BLACK, HOT PINK,
RED, VINTAGE
PINK, WHITE

O/S
O/S QUEEN
 



Open Crotch

Open-crotch panty with large embroidered heart detail.


STYLE 1429
WHITE

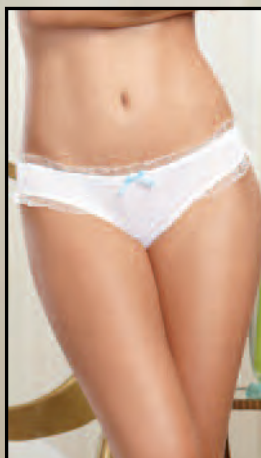
O/S




Microfiber cheeky panty with rhinestone "Bride" detail and organza ruffle trim.

STYLE 1411
WHITE



S, M, L, XL


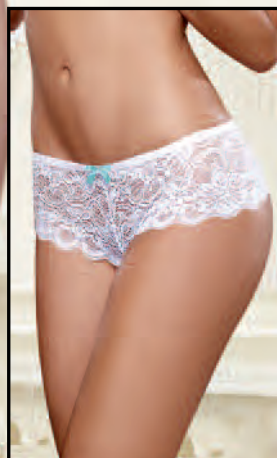


Open Crotch

Stretch lace cheeky boyshort with open crotch and satin bow details.

STYLE 7177
BLACK, CORAL, HOT
PINK, RUBY, SAPPHIRE,
TURQUOISE, VINTAGE
PINK, WHITE

S, M, L
1X/2X, 3X/4X
  166





Sheer garter belt pantyhose with lace trim.
(Thong not included.)

STYLE 0013

O/S

BLACK, WHITE

O/S QUEEN



Fishnet thigh highs with back seam and stay-up silicone lace top. Shown with Style 1376 thong; sold separately.

STYLE 0001

O/S

BLACK, NUDE, WHITE

O/S QUEEN



Floral stretch lace halter dress with attached garters and lace thigh highs.
(G-string not included.)

STYLE 0074

O/S

BLACK, WHITE O/S QUEEN



BLACK ONLY



Sheer thigh highs with lace top.
Shown with Style 9382 garter belt;
sold separately. (G-string not included.)

STYLE 0002
BLACK, WHITE

O/S
O/S QUEEN



Sheer thigh highs with stay-up silicone
lace top. Shown with Style 1376 thong;
sold separately.

STYLE 0005
BLACK, NUDE,
RED, WHITE

O/S
O/S QUEEN



Sheer thigh highs with back seam. Shown
with Style 9382 garter belt; sold separately.
Shown with Style 8735 garter belt; sold
separately. (G-string not included.)

STYLE 0007
BLACK, NUDE,
RED, WHITE

O/S
O/S QUEEN



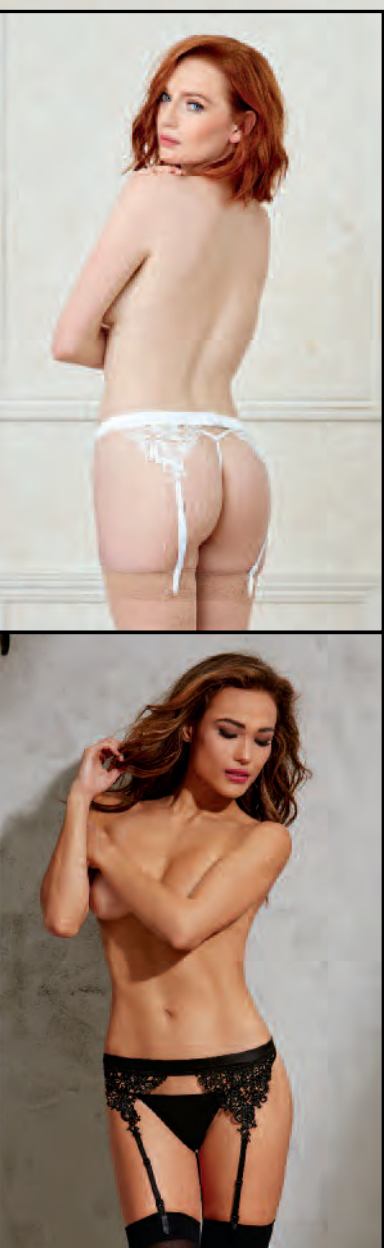
Sheer thigh highs with stay-up
silicone lace top and back seam with bow
detail at calf. Shown with Style 1376
thong; sold separately.

STYLE 0081
BLACK, HOT PINK,
WHITE

O/S



Dreamgirl
GARTER BELTS

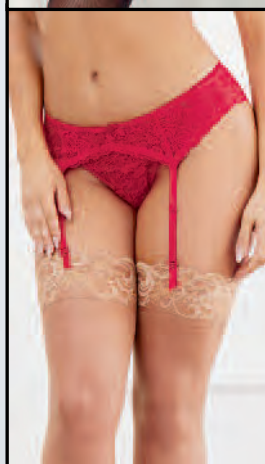
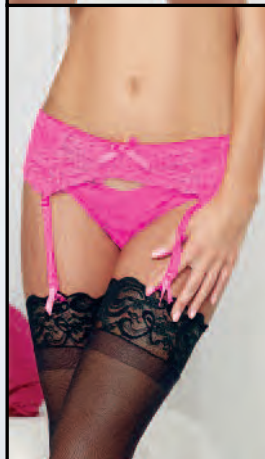
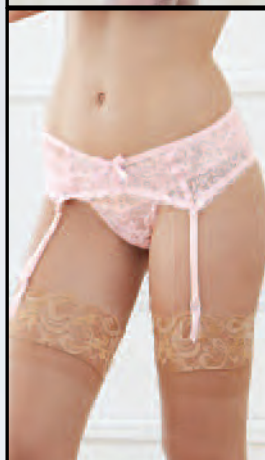


Garter belt with embroidered Venice lace trim, hook & eye back closure and adjustable garters.
Shown with Style 0007 thigh highs; sold separately. (G-string not included.)

STYLE 10496
BLACK, WHITE

O/S





Stretch lace garter belt with scalloped hem and hook & eye back closure. Shown with Styles 1376 thong and 0005 thigh highs; sold separately.

STYLE 8735
BLACK, HOT PINK,
RED, VINTAGE
PINK, WHITE

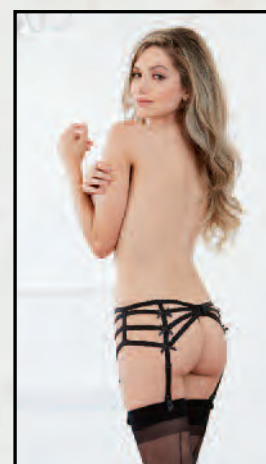
O/S
O/S QUEEN



Satin-front garter belt with zig-zag topstitch detailing, stretch mesh back, adjustable garter straps and hook & eye back closure. Shown with Style 0006 thigh highs; sold separately. (G-string not included.)

STYLE 9382
BLACK

O/S
O/S QUEEN



Chevron-design strappy satin elastic garter belt with satin bow details, adjustable garter straps and hook & eye back closure. Shown with Style 0007 thigh highs; sold separately. (G-string not included.)

STYLE 9330
BLACK

O/S



Dreamgirl

P A C K A G E D

p a n t i e s



STYLE 1435



Microfiber cheeky panty with stretch lace trim and elastic criss-cross open back detail.

STYLE 1434
BLACK, SLATE/BLACK,
HOT PINK/BLACK,
IRIS/ BLACK

S, M, L, XL
1X, 2X, 3X



Stretch lace panty with elastic criss-cross details.

STYLE 1435
BLACK, CORAL,
SLATE,
TURQUOISE

S, M, L, XL

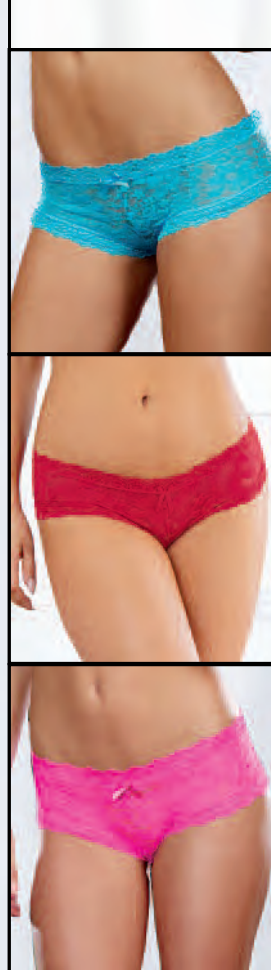




Stretch lace tanga panty with criss-cross strappy waistband detail.

STYLE 1412
BLACK, RED

S/M, M/L



Stretch lace, cheeky hipster panty with scalloped lace trim and satin bow.

STYLE 1375
BLACK, HOT PINK,
RED, TURQUOISE

S, M, L, XL



Stretch lace, low-rise panty with open crotch and ruffled back detail.

STYLE 1300
BLACK, RED,
HOT PINK,

S, M, L
1X/2X, 3X/4X



Stretch lace, open-crotch boyshort with lace-up back detail.

STYLE 1326
BLACK

S, M, L
1X/2X, 3X/4X



Open Crotch

Open Crotch



Faux-leather, stretch knit cheeky panty with functional zipper front and stretch mesh back with ruching detail.

STYLE 1423
BLACK

S, M, L, XL



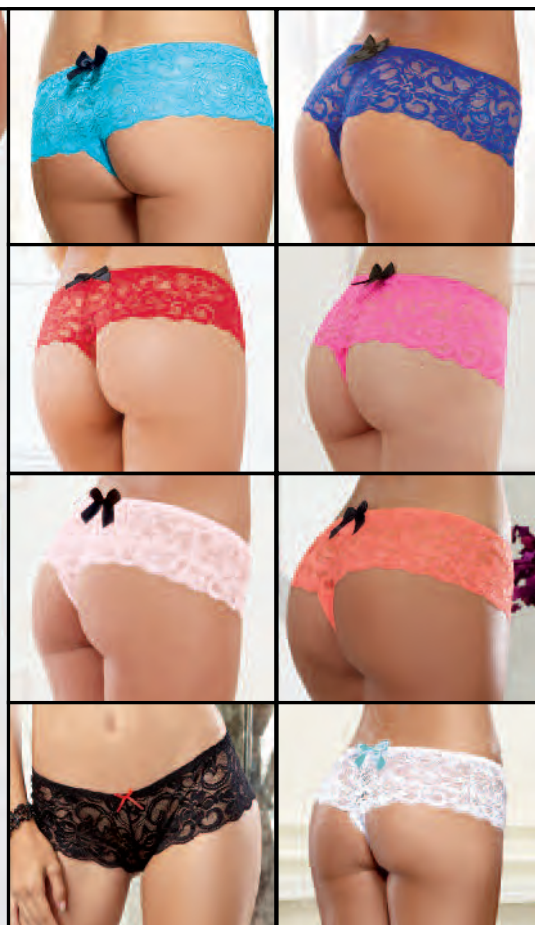
Swirl-patterned stretch mesh strappy panty with criss-cross cheeky back design.

STYLE 1394
BLACK

S/M, M/L



Stretch lace and open-crotch cheeky boyshort with satin bow details.



STYLE 7177
BLACK, CORAL, HOT PINK,
RUBY, SAPPHIRE, TURQUOISE,
VINTAGE PINK, WHITE

S, M, L
1X/2X, 3X/4X



Lace garter that functions as a wallet with two secret pockets. Pockets can fit a credit card and large phone.

STYLE 10983
BLACK

S/M, M/L





Stretch lace thong with stretch lace waistband.

STYLE 1376
BLACK, VINTAGE PINK,
RED, WHITE

O/S

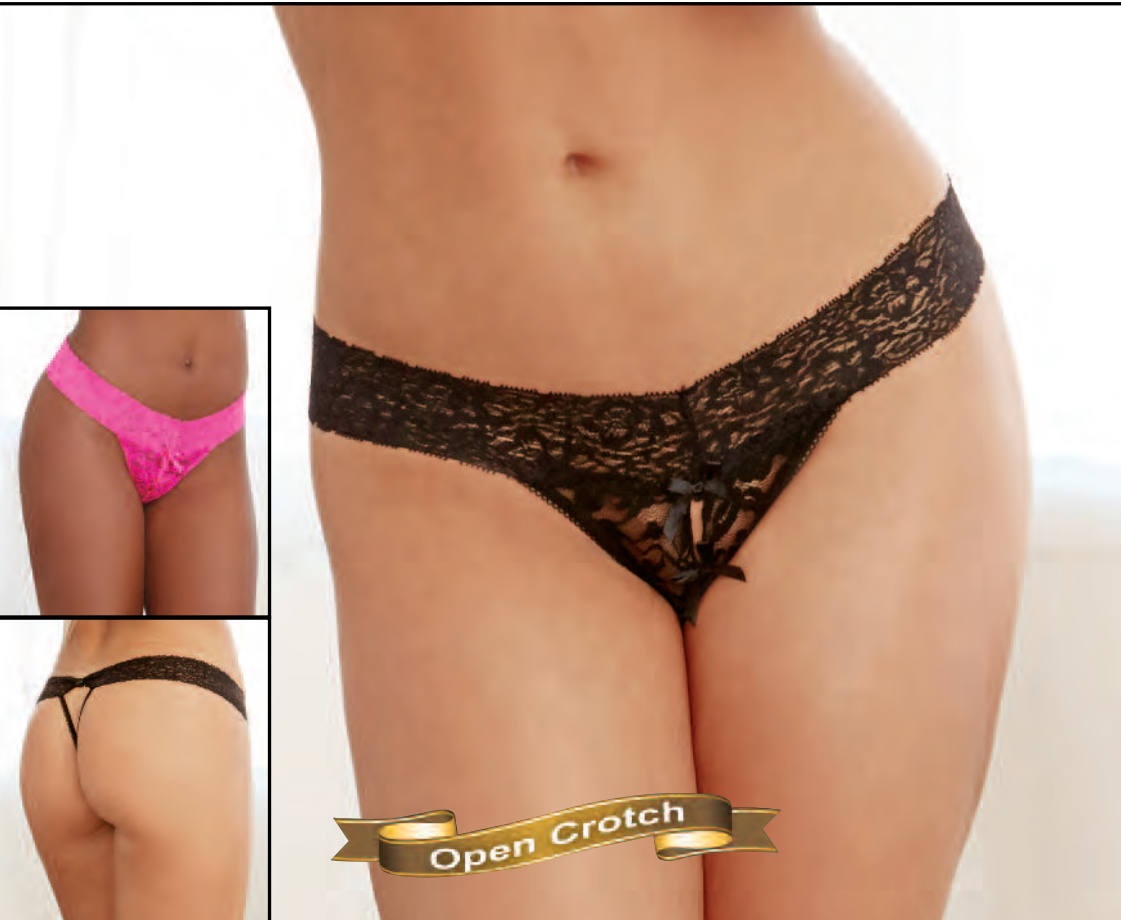
O/S QUEEN
BLACK,
VINTAGE
PINK, AND
RED ONLY



Microfiber cheeky panty with cross-dye lace back and satin bow trim.

STYLE 1380
BLACK/GOLD,
IRIS/BLACK,
RED/BLACK

S, M, L, XL

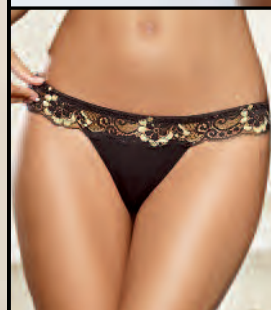


Open Crotch

Stretch lace, open-crotch thong with cute peek-a-boo back detail.

STYLE 1431
BLACK, HOT PINK

S/M, M/L



Cross-dye lace and microfiber thong.

STYLE 1391
BLACK/GOLD

S, M, L, XL

1X/2X, 3X/4X





Leopard-print stretch mesh panty with lace ruffle trim and open-back heart detail.

STYLE 1393
LEOPARD

S, M, L, XL
1X/2X, 3X/4X



Scalloped cross-dye lace and stretch mesh panty with strappy elastic back detail.

STYLE 1424
BLACK

S, M, L, XL



Stretch mesh panty with lace ruffle trim and open-back heart detail.

STYLE 1377
HOT PINK/BLACK,
RED/BLACK

S, M, L, XL
1X/2X, 3X/4X



Heart stretch lace panty with open crotch and open-back heart detail.

STYLE 1442
WHITE

S, M, L, XL
1X, 2X, 3X



Dreamgirl

BLACK

d i a m o n d



STYLE 0296



Fishnet lace teddy bodystocking with strapless neckline, attached lace collar with snap closure, strappy back detail, thong back and attached thigh highs.

STYLE 0296
BLACK

O/S



Fishnet garter dress with scalloped lace cup detail, adjustable shoulder straps and attached thigh highs with seam-back detail.
(G-string not included.)

STYLE 0289
BLACK

O/S





Fishnet lace garter dress with strappy satin elastic neckline, knitted waistband detail and attached thigh highs with criss-cross garters.
(G-string not included.)

STYLE 0288
BLACK

O/S



STYLE 0288X
BLACK

O/S QUEEN





Fishnet lace bustier-style bodystocking with criss-cross halter straps, snap closure at neck and attached thigh highs with criss cross garters.
(G-string not included.)

STYLE 0299X
BLACK

O/S QUEEN



STYLE 0299
BLACK

O/S





STYLE 0290



Two-piece set. Swirl-patterned lace and fishnet garter dress features high-waist garter skirt with attached neck collar detail and attached thigh highs; separate bralette features adjustable shoulder straps and tie-back closure. (G-string not included.)

STYLE 0290X
BLACK

O/S QUEEN



STYLE 0290
BLACK

O/S





Fishnet and knitted lace garter dress with plunging keyhole neckline, waistband detail, open back with tie closure and attached thigh highs. (G-string not included.)

STYLE 0287

O/S



BLACK



Swirl-patterned lace bustier-style bodystocking with scalloped lace accents, attached collar detail, tie-back closure, corset-styled bodice lines, faux-lace-up back, and attached thigh highs. (G-string not included.)

STYLE 0300

O/S



BLACK



Lace-trimmed fishnet teddy bodystocking with attached collar, adjustable shoulder straps, open cups, thong back and thigh highs with attached side garters and seam-back detail. (G-string not included.)

STYLE 0295

O/S

BLACK



Seamless bodystocking with opaque criss-cross bralette and panty detail with snap crotch, fence net center, attached criss-cross garters and semi-sheer thigh highs.

STYLE 0294

O/S

BLACK





Two-piece set. Fishnet bodystocking features open crotch, tie-back halter neckline; separate elastic body harness features O-ring details.

STYLE 0291

O/S



BLACK



Open-cup teddy bodystocking with fishnet side details, snap crotch, attached semi-sheer thigh highs. Bodystocking features collared neckline with snap closure and attached chain with wrist restraints. (Pasties not included.)

STYLE 0298

O/S



BLACK



Dreamgirl

MOST LOVED

b l a c k d i a m o n d

STYLES 9330, 0005



Semi-sheer halter garter dress with snap neck closure, stretch lace trim, attached garters and matching thigh highs. (G-string not included.)

STYLE 0035
BLACK, RED

O/S



Semi-sheer halter garter dress with snap neck closure, stretch lace trim, attached garters and matching thigh highs.

STYLE 0035X
BLACK, RED

O/S QUEEN



Sheer, stretch lace garter dress with lace-trimmed straps, satin ribbon lace-up back detail and attached thigh highs. (G-string not included.)

STYLE 0144
BLACK

O/S



Sheer, stretch lace garter dress with lace-trimmed straps, satin ribbon lace-up back detail and attached thigh highs. (G-string not included.)

STYLE 0144X
BLACK

O/S QUEEN





Floral stretch lace garter dress with halter neckline and attached thigh highs. (G-string not included.)

STYLE 0074X
BLACK



Floral stretch lace garter dress with halter neckline and attached thigh highs. (G-string not included.)

STYLE 0074
BLACK, WHITE



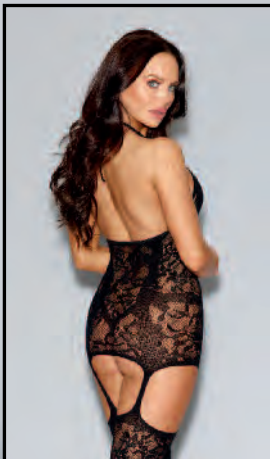
Lace fishnet halter garter dress with opaque bodice style lines, adjustable halter ties and attached thigh highs. (G-string not included.)

STYLE 0145X
BLACK



Lace fishnet halter garter dress with opaque bodice style lines, adjustable halter ties and attached thigh highs. (G-string not included.)

STYLE 0145
BLACK





Semi-sheer garter dress with $\frac{3}{4}$ -length, off-the-shoulder sleeves, stretch lace trim and attached thigh highs. (G-string not included.)

STYLE 0237
BLACK

O/S



Semi-sheer garter dress with $\frac{3}{4}$ -length, off-the-shoulder sleeves, stretch lace trim and attached thigh highs. (G-string not included.)

STYLE 0237X
BLACK

O/S QUEEN



Fishnet garter dress with lace hem, keyhole neck and attached thigh-highs. (G-string not included.)

STYLE 0097
BLACK

O/S



Fishnet garter dress with lace hem, keyhole neck and attached thigh-highs. (G-string not included.)

STYLE 0097X
BLACK

O/S QUEEN





Seamless opaque halter garter dress with front and back slash details, tie closures and attached slash-front thigh highs. (G-string not included.)

STYLE 0233
BLACK

O/S



Opaque fence-net garter dress with attached thigh highs. (G-string not included.)

STYLE 0102
BLACK, NEON PINK

O/S



Opaque fence-net garter dress with attached thigh highs. (G-string not included.)

STYLE 0102X
BLACK

O/S QUEEN





Sheer garter dress with scalloped edge lace design details, elastic cup strapping with bow accent and attached thigh highs. (G-string not included.)

STYLE 0205
BLACK

O/S



Stretch lace garter dress with adjustable halter ties, low open back with peek-a-boo detail and attached thigh highs. (G-string not included.)

STYLE 0258
BLACK

O/S



Lace high-neck garter dress with fishnet sides, snap collar closure and attached fishnet thigh highs. (G-string not included.)

STYLE 0226
BLACK

O/S



Sheer garter dress with opaque knitted bra, high-waisted skirt with criss-cross back detail, adjustable halter ties and attached thigh highs with lace-up boot look.

STYLE 0235
BLACK

O/S





Sheer garter dress with knitted lace design, back bow detail, adjustable halter-tie closure and attached thigh highs. (G-string not included.)

STYLE 0211
BLACK

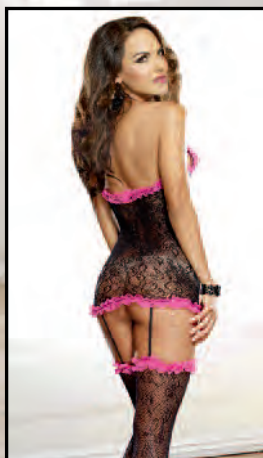
O/S



Stretch fishnet garter dress with strappy neckline, knitted lace details and attached thigh highs. (G-string not included.)

STYLE 0263
BLACK

O/S



Stretch lace halter garter dress with ruffled lace accents, faux lace-up front detail, adjustable neck ties and attached thigh highs.

STYLE 0187
BLACK/FUCHSIA

O/S



Art-deco-patterned lace garter dress with adjustable halter ties and attached thigh highs with criss-cross garters. (G-string not included.)

STYLE 0240
BLACK

O/S





Striped fishnet long-sleeve dress.
(G-string not included.)

STYLE 0049
MULTI



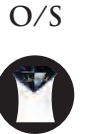
Sheer, two-way garment with scalloped lace detail. Can be worn as a strapless open-crotch bodystocking, or upside-down as a long-sleeved dress. (G-string not included.)

STYLE 0245
BLACK



Seamless fishnet bodystocking with halter neck, open crotch and low back. (G-string not included.)

STYLE 0017
BLACK





Semi-opaque halter bodystocking with adjustable halter ties, low open-back detail and functioning front-to-back zipper. (G-string not included.)

STYLE 0248
BLACK

O/S



Sheer halter bodystocking with lace-trimmed v-back and center thigh seam with satin bow detail. (G-string not included.)

STYLE 0128
BLACK

O/S



Sheer suspender tank bodystocking. (G-string not included.)

STYLE 0031
BLACK

O/S





Long-sleeved fishnet bodystocking with open crotch. (G-string not included.)

STYLE 0015
BLACK, NEON PINK

O/S



Long-sleeved fishnet bodystocking with open crotch. (G-string not included.)

STYLE 0015X
BLACK, NEON PINK

O/S QUEEN



Bow-patterned lace long-sleeved bodystocking with open crotch. (G-string not included.)

STYLE 0019
BLACK

O/S

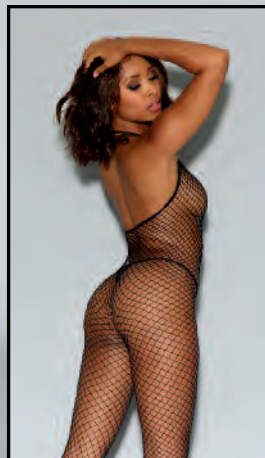


Bow-patterned lace long-sleeved bodystocking with open crotch. (G-string not included.)

STYLE 0019X
BLACK

O/S QUEEN





Diamond-net halter bodystocking with open crotch. (G-string not included.)

STYLE 0079
BLACK

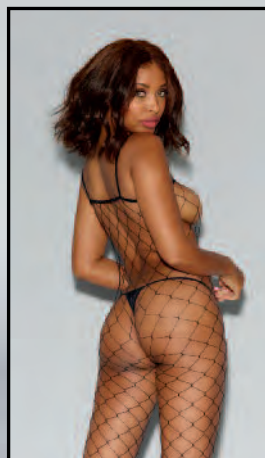
O/S



Stretch fishnet bodystocking with 3/4 length sleeves, open crotch, cut-out back and placed criss-cross detail.

STYLE 0262
BLACK

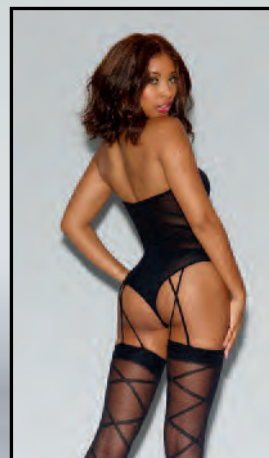
O/S



Fence-net, spaghetti-strap bodystocking. (G-string not included.)

STYLE 0020
BLACK

O/S



Sheer halter teddy bodystocking with opaque knitted bra & panty, criss-cross detail, snap collar closure, snap crotch and attached thigh highs with criss-cross garters.

STYLE 0212
BLACK

O/S





Semi-sheer halter bodystocking with snap neck closure, stretch lace trim, open crotch and plunging low back with adjustable lace-up detail. (G-string not included.)

STYLE 0267
BLACK

O/S



Semi-sheer halter bodystocking with snap neck closure, stretch lace trim, open crotch and plunging low back with adjustable lace-up detail. *Plus garment has been modified with a more opaque knit.*

STYLE 0267X
BLACK

O/S QUEEN



Stretch fishnet, long-sleeved romper with stretch lace trim, plunging neckline, ribbon tie-front closure and attached thigh highs. (G-string not included.)

STYLE 0269
BLACK

O/S



Open-cup bodystocking with knitted lace "teddy" design, fishnet legs, open crotch and adjustable halter ties. (Pasties and G-string not included.)

STYLE 0268
BLACK

O/S





Fence net pantyhose with attached lace short top.

STYLE 0029
BLACK

O/S



Fence net pantyhose.
(G-string not included.)

STYLE 0010
BLACK

O/S



Sheer, open-crotch pantyhose.
(G-string not included.)

STYLE 0082
BLACK

O/S

O/S QUEEN



Fishnet pantyhose with back seam.
(G-string not included.)

STYLE 0011
BLACK, NUDE

O/S

O/S QUEEN





Sheer nude pantyhose with black opaque lace-up boot design. Pantyhose can be worn with lace-up detail in front or back. (G-string not included.)

STYLE 0220
BLACK



Sheer garter belt pantyhose. (G-string not included.)

STYLE 0013
BLACK, WHITE



Semi-opaque suspender pantyhose. (G-string not included.)

STYLE 0250
BLACK



Lace short garter belt with attached sheer thigh highs.

STYLE 0093
BLACK





Architecturally-patterned fishnet garter-belt-style pantyhose with attached garters and matching thigh highs. (G-string not included.)

STYLE 0232
BLACK

O/S



Stretch fishnet, garter-belt style-pantyhose with attached criss-cross garters and attached thigh highs that feature a delicate knitted lace and point d'esprit design. (G-string not included.)

STYLE 0276
BLACK

O/S

O/S QUEEN



Sheer garter-belt-style pantyhose with lace trimmed thigh highs, back seam to calf and satin bow detail. (G-string not included.)

STYLE 0271
BLACK

O/S





Stretch fishnet thigh highs with eyelash lace design, raw-edge top, back seam and Cuban heel details. Shown with Style 9382 garter belt; sold separately. (G-string not included.)

STYLE 0281
BLACK

O/S



Opaque, seamless thigh highs. (Garter belt and G-string not included.)

STYLE 0277
BLACK

O/S



Sheer thigh highs with lace top. Shown with Style 9385 garter belt; sold separately. (G-string not included.)

STYLE 0002
BLACK, WHITE

O/S

O/S QUEEN



Sheer thigh highs with opaque lace-up boot design and ribbon bow. Stockings can be worn with lace-up detail in front or back. Shown with Style 9382 garter belt; sold separately. (G-string not included.)

STYLE 0219
BLACK,
NUDE/BLACK

O/S





Sheer thigh highs with stay-up silicone lace top. Shown with Style 1376 thong; sold separately.

STYLE 0005
BLACK, NUDE,
RED, WHITE

O/S

O/S QUEEN



Sheer thigh highs with stay-up silicone contrast-lace top and satin bow detail. Shown with Style 1376 thong; sold separately.

STYLE 0026
BLACK/PINK,
BLACK/RED

O/S



Sheer thigh highs with stay-up silicone lace top and back seam with bow detail at calf. Shown with Style 1376 thong; sold separately.

STYLE 0081
BLACK, WHITE,
HOT PINK

O/S





Opaque thigh highs with satin bow.
Shown with Style 9382 garter belt; sold
separately. (G-string not included.)

STYLE 0009
BLACK

O/S

O/S QUEEN



Fishnet thigh highs with lace top.
Shown with Style 9382 garter belt;
sold separately. (G-string not included.)

STYLE 0006
BLACK, RED

O/S

O/S QUEEN



Sheer thigh highs with back seam.
Shown with Style 9382 garter belt; sold
separately. (G-string not included.)

STYLE 0007
BLACK, NUDE,
RED, WHITE

O/S

O/S QUEEN





Plain-top fishnet thigh highs with back seam and bow trim. Shown with Style 9382 garter belt; sold separately. (G-string not included.)

STYLE 0192
BLACK

O/S
O/S QUEEN
 



Neon sheer thigh highs with stay-up silicone lace topper. Shown with Style 7177 panty; sold separately

STYLE 0005N
NEON PINK

O/S
O/S QUEEN



Neon fishnet thigh highs with back seam and stay-up silicone lace top. Shown with Style 7177 thong; sold separately.

STYLE 0001N
HOT PINK

O/S
O/S QUEEN





Fishnet thigh highs with back seam and stay-up silicone lace topper. Shown with Style 1376 thong; sold separately.

STYLE 0001
BLACK, NUDE,
WHITE

O/S
O/S QUEEN



Fence-net thigh highs with stay-up silicone lace top. Shown with Style 1375 thong; sold separately.

STYLE 0115
BLACK

O/S



Cuban-heeled thigh highs with back seam and stay-up silicone wide-lace topper. Shown with Style 1376 lace thong; sold separately.

STYLE 0253
NUDE/BLACK

O/S



Raw-top, diamond-net thigh highs. Shown with Style 9382 garter belt; sold separately. (G-string not included.)

STYLE 0215
BLACK

O/S



2018 Collection Guide

The option to place orders, check inventory & track order status is now at your fingertips... log onto www.DGorders.com!



Women's US Size Chart														
	REGULAR SIZES								PLUS SIZES					
	XS	S	M	L	XL	S/M	M/L	O/S	1X/2X	3X/4X	1X	2X	3X	O/S QUEEN
SIZE	0-2	2-6	6-10	10-14	14-16	2-8	8-14	2-14	16-20	22-24	16-18	20-22	24-26	16-22
CORSET SIZE		32	34	36	38						40	42	44	
CUP	A	A/B	B/C	C/D	D/E	A/B	B/C	B/C	D/DD	DD	D/DD	DD/DDD	DDD/F	D/DD
BUST	30"-32"	32"-34"	34"-36"	36"-38"	38"-40	32"-34"	36"-38"	32"-38"	40"-46"	46"-52"	44"-46"	48"-50"	52"-54"	40"-50"
WAIST	23"-25"	25"-27"	27"-29"	29"-31"	31"-33"	25"-27"	28"-32"	24"-31"	36"-42"	42"-46"	38"-40"	42"-44"	46"-48"	36"-44"
HIP	32"-34"	34"-36"	36"-38"	38"-40"	40"-42"	34"-36"	38"-40"	34"-40"	44"-50"	50"-54"	46"-48"	50"-52"	54"-56"	42"-52"
INSEAM	32"	32"	32"	32"	32"	32"	32"	32"	32"	32"	32"	32"	32"	32"
RISE	6 1/2"-7"	7"-7 1/2"	7 1/2"-8"	8"-8 1/2"	8 1/2"-9"	7 1/2"-8"	8"-8 1/2"	7 1/2"-8"	9"-9 1/2"	10"- 10 1/2"	9"- 9 1/2"	10"- 10 1/2"	11"- 11 1/2"	9"- 10"
WEIGHT	85 lbs-90 lbs	90 lbs-120 lbs	120 lbs-140 lbs	140 lbs-160 lbs	160 lbs-180 lbs	90 lbs-130 lbs	130 lbs-160 lbs	90 lbs-160 lbs	165 lbs-220 lbs	220 lbs-265 lbs	180 lbs-220 lbs	220 lbs-260 lbs	260 lbs-300 lbs	180 lbs-260 lbs

Women's INTERNATIONAL Size Chart														
	REGULAR SIZES								PLUS SIZES					
	XS	S	M	L	XL	S/M	M/L	O/S	1X/2X	3X/4X	1X	2X	3X	O/S QUEEN
UK	0-2	6-8	10-12	14-16	16-18	6-10	12-16	6-16	18-22	24-26	18-20	22-24	26-28	18-24
FRANCE/SPAIN	32-34	34-36	38-40	42-44	44-46	34-38	40-44	33-44	46-50	52-54	46-48	50-52	54-56	46-52
GERMANY	30-32	32-34	36-38	40-42	42-44	32-36	38-42	32-42	44-48	50-52	44-46	48-50	52-54	44-50
ITALY	34-36	38-40	42-44	46-48	48-50	38-42	44-48	38-48	50-54	56-58	50-52	54-56	58-60	50-56
JAPAN	5	7-9	11-13	15-17	19-21	7-13	13-17	7-17	21-25	25-29	21-23	25-27	29-31	21-25
CUP	A	A/B	B-C	C/D	D/E	A/B	B/C	B/C	D/DD	DD	D/DD	DD/DDD	DDD/F	D/DD
US CORSET SIZE		32	34	36	38						40	42	44	
BUST	76cm-81cm	81cm-86cm	86cm-91cm	91cm-97cm	97cm-102cm	81cm-86cm	91cm-97cm	81cm-97cm	102cm-117cm	117cm-132cm	112 cm -117 cm	122 cm -127 cm	132 cm-137 cm	112 cm- 127 cm
WAIST	54cm-64cm	64cm-69cm	69cm-74cm	74cm-79cm	79cm-84cm	61cm-66cm	71cm-81cm	61cm-86cm	91cm-107cm	107cm-117cm	96.5 cm -101.5 cm	107 cm -112 cm	117 cm -122 cm	91cm-112cm
HIP	81cm-86cm	86cm-91cm	91cm-97cm	97cm-102cm	101cm-107cm	86cm-91cm	97cm-102cm	91cm-102cm	112cm-127cm	127cm-137cm	117 cm -122 cm	127 cm -132 cm	137 cm -142.5 cm	107cm-135cm
INSEAM	81cm	81cm	81cm	81cm	81cm	81cm	81cm	81cm	81cm	81cm	81cm	81cm	81cm	81cm
RISE	16cm-18cm	18cm-19cm	19cm-20cm	20cm-22cm	22cm-23cm	19cm-20cm	20cm-22cm	19cm-20cm	23cm-24cm	25cm-27cm	23 cm - 24cm	25.5 cm - 26.5 cm	28 cm -29 cm	23cm-25cm
WEIGHT	39kg-41kg	41kg-54kg	54kg-64kg	64kg-73kg	73kg-85kg	41kg-59kg	59kg-73kg	41kg-73kg	75kg-100kg	100kg-120kg	81kg- 100kg	100kg- 118kg	118kg- 136kg	82kg-118kg

Men's US Size Chart						
	M	L	XL	XXL	M/L	XL/XXL
SIZE	38-40	42-44	46-48	50-52	38-44	46-52
CHEST	38"-40"	42"-44"	46"-48"	50"-52"	38"-44"	46"-52"
WAIST	32"-34"	36"-38"	40"-42"	44"-46"	32"-38"	40"-46"
HIP	39"-41"	43"-45"	47"-49"	51"-53"	39"-45"	47"-53"
INSEAM	32"	32"	32"	32"	32"	32"
WEIGHT	140-150 lbs	150-200 lbs	200-250 lbs	250-300 lbs	140-200 lbs	200-300 lbs

Men's INTERNATIONAL Size Chart						
	M	L	XL	XXL	M/L	XL/XXL
UK	38-40	42-44	46-48	50-52	38-44	46-52
EU	48-50	52-54	56-58	60-62	46-48	46-48
JAPAN	40-42	44-46	48-50	52-54	40-46	48-54
CHEST	97cm-102cm	106cm-112cm	117cm-123cm	127cm-132cm	97cm-112cm	117cm-132cm
WAIST	81cm-86cm	91cm-97cm	102cm-107cm	113cm-117cm	81cm-97cm	102cm-117cm
HIP	99cm-104cm	109cm-114cm	119cm-124cm	130cm-135cm	99cm-114cm	119cm-135cm
INSEAM	81cm-84cm	81cm-84cm	81cm-84cm	81cm-84cm	81cm-84cm	81cm-84cm
WEIGHT	64kg-68kg	68kg-91kg	91kg-113kg	113kg-136kg	64kg-91kg	91kg-136kg

Dreamgirl Catalog Calender		
Catalogue	Month Issued	Duration
Collection	November	November-October
Costume Collection	January	January-October
Simply Sexy	February	February-June
Fall/Holiday	June	June-February



COPYRIGHT © MMXVIII

Dreamgirl

The images and graphics in this catalogue [or CD] are the copyright-protected work of DG Brands. Any use or reproduction without the express written consent of DG Brands is strictly prohibited. Violators will be prosecuted to the fullest extent of the law.