

販売店 **Lady Cat**

by Cat Fish Club

<http://www.ladycat.com>

service@ladycat.com

TEL 047-397-7377

Dreamgirl[®]

2016/2017 FALL/HOLIDAY/VALENTINE'S COLLECTION

Chains of Desire



STYLE 10451

EXIT



Fully adjustable, draped
silver metal chain chemise
with criss-cross back,
silver rings and lobster-hook
closures. (One size fits all.
Undergarments not
included.)



STYLE 10451

O/S

SILVER





Fits up to 1X

Late Night Craving



STYLE 10460





Lace halter gown with scalloped-edge trim, plunging neckline, high side slit, low back, satin waist detail and adjustable tie-back closures. Matching g-string included.



STYLE 10460

S, M, L, XL



GARNET

Stretch scalloped lace and mesh babydoll with unlined underwire cups. Features high neck with flattering open décolletage and open back with hook & eye closure. Matching g-string included.



STYLE 10463X

1X/2X, 3X/4X

GARNET



STYLE 10463

S, M, L, XL

GARNET





Love Notes

STYLE 10462



Stretch mesh garter slip with stretch galloon lace inset and underwire shelf bra. Features high neck with flattering open décolletage, ultra-low back, scalloped lace trim, fixed garters and back hook closure. Matching g-string included. Shown with Style 0005 thigh highs; sold separately.

STYLE 10462

S, M, L, XL

GARNET



Dark Fantasies



STYLE 10417

Chiffon kimono-style robe with ¾-length embroidered, sequined, scalloped mesh sleeves and back detail with tie-front back inset belt, interior tie and back shirring. Matching g-string included.



STYLE 10417X

1X/2X, 3X/4X

BLACK



STYLE 10417

S, M, L, XL

BLACK



Pleated chiffon babydoll
with embroidered,
sequined, scalloped,
plunging mesh bodice.
Features cap sleeves,
satin underbust ribbon
and satin cross-back
detail. Matching thong
with satin bow included.



STYLE 10415

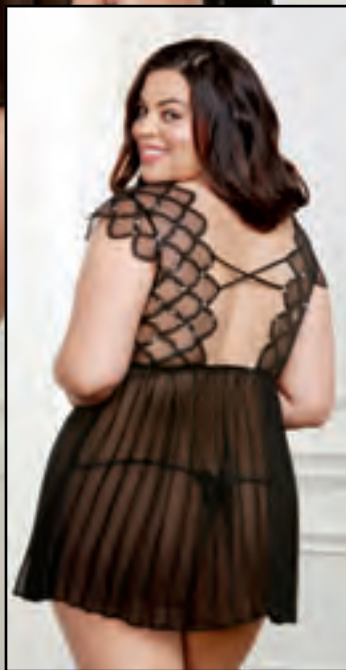
S, M, L, XL



BLACK



Silky satin French-cut romper with embroidered, sequined, scalloped mesh kimono-style ¾-length sleeves. Features plunging tie front, elastic waist and embroidered, sequined, scalloped mesh detail along leg opening.



STYLE 10415X
BLACK

1X/2X, 3X/4X



STYLE 10416
BLACK

S, M, L, XL



Our Little Secret



STYLE 10477



Three-piece set; scalloped, stretch lace and power-mesh underwire bra with adjustable straps and hook & eye back closure. High-waisted garter skirt features peek-a-boo details, satin elastic trim and removable/adjustable garter straps. Matching g-string included. Shown with Style 0007 thigh highs; sold separately.



STYLE 10477
LIPSTICK RED

S, M, L, XL



Scalloped stretch lace and mesh babydoll with peek-a-boo details, satin elastic trim, adjustable shoulder straps and flyaway open back with hook & eye closure. Features removable/adjustable garters attached to the bra of the babydoll. Includes matching lace panty with open-back detail. Shown with Style 0005 thigh highs; sold separately.



STYLE 10478
LIPSTICK RED

S, M, L, XL





Slinky, nylon stretch mesh gown with embroidered venice lace back detail, body-skimming fit, back train, bias-edge satin trim and adjustable shoulder straps. Matching g-string included.



STYLE 10458

S, M, L, XL



LIPSTICK RED

Satin charmeuse
chemise with lace
triangle bra cups
and scalloped trim.
Features lace front inset,
satin bows, ultra-low
back with scalloped lace
trim and adjustable
criss-cross double
straps. Matching
thong included.



STYLE 8718X
LAVENDER, LIPSTICK RED,
MIDNIGHT, WHITE

1X/2X, 3X/4X



STYLE 8718
LAVENDER, LIPSTICK RED,
MIDNIGHT, WHITE

S, M, L, XL



Silky satin charmeuse
slim-fit robe with
embroidered cap
sleeves and attached
satin belt. Includes
matching bias-cut
chemise with
embroidered cups
and adjustable
criss-cross
double straps.



STYLE 10414
LIPSTICK RED,
SAPPHIRE

S, M, L, XL



STYLE 10414X
LIPSTICK RED,
SAPPHIRE

1X/2X, 3X/4X



Delicate lace babydoll with double-row sequin trim, keyhole details, adjustable shoulder straps and tie-back closure. Matching lace thong included.



STYLE 10443X
LIPSTICK RED

1X/2X, 3X/4X



STYLE 10443
LIPSTICK RED

S, M, L, XL



Light Up The Night



STYLE 10424

Scalloped stretch lace halter teddy with sheer mesh flutter sides, ultra-low-cut back, cheeky bottom coverage, satin ribbon bow belt with tie back and snap crotch closure.



Stretch scalloped lace open-front halter babydoll with satin ribbon tie-front closure and attached, adjustable garters. Matching scalloped lace open-crotch panty with satin bow details included. Shown with Style 0005 thigh highs; sold separately.



STYLE 10424
BLACK

S, M, L, XL

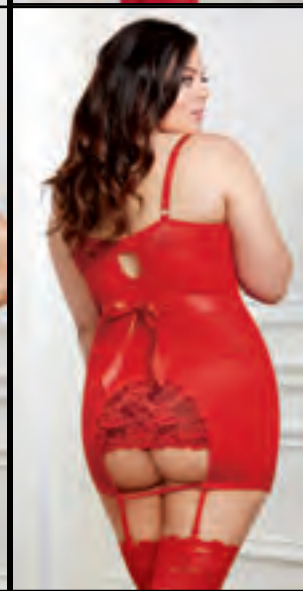


STYLE 10423
BLACK

S, M, L, XL



Stretch mesh garter slip with contrast-lined underwire cups and front panel. Features peek-a-boo back detail, adjustable straps, hook & eye back closure and attached, adjustable garters. Satin waist tie can be worn tied in front or back. Matching g-string included. Shown with Style 0005 thigh highs; sold separately.



STYLE 10420
LIPSTICK RED

S, M, L, XL



STYLE 10420X
LIPSTICK RED

1X/2X, 3X/4X





Silky satin charmeuse slim-fit robe with embroidered cap sleeves and attached satin belt. Includes matching bias-cut chemise with embroidered cups and adjustable criss-cross double straps.



STYLE 10414X
LIPSTICK RED,
SAPPHIRE

1X/2X, 3X/4X



STYLE 10414
LIPSTICK RED,
SAPPHIRE

S, M, L, XL





Three-piece set;
includes satin
bias-cut camisole
with racerback
adjustable straps,
scalloped stretch
lace bralette with
adjustable straps
and matching
stretch lace
tap pant.



STYLE 10410
SAPPHIRE

S, M, L, XL



STYLE 10410X
SAPPHIRE

1X/2X, 3X/4X



Stretch lace open-cup underwire shelf bra with adjustable shoulder straps and hook & eye back closure. Shown with style 8735 garter belt and 0005 thigh highs; sold separately. (Pasties and g-string not included.)



Stretch scalloped-galloon-lace underwire teddy with silver chain details on neckline and legs, adjustable straps and back hook closure. Chains are removable for easy washing or a variety of looks.



STYLE 9386 32, 34, 36, 38
BLACK, HOT PINK,
SAPPHIRE, WHITE



STYLE 10471 S, M, L, XL
SAPPHIRE





Naughty Girl

STYLE 10480

Three-piece set; includes stretch lace underwire shelf bra with eyelash lace trim, adjustable straps and hook & eye back closure. Unique two-layer garter skirt features stretch lace miniskirt and stretch satin undergarment with open back, hook & eye back closure and adjustable garter straps. Garter skirt can be worn at the waist or lower on the hips. Matching g-string included. Shown with Style 0005 thigh highs; sold separately.



Can be worn on hips or waist

STYLE 10480

S, M, L, XL

BLACK/EMERALD



Unique two-layer garment; stretch lace chemise with eyelash lace trim, stretch satin bustier undergarment, underwire shelf bra, adjustable shoulder straps, hook & eye back closure and adjustable garter straps.

Matching g-string included. Shown with Style 0005 thigh highs; sold separately.



STYLE 10479

S, M, L, XL



BLACK/EMERALD

STYLE 10479X

1X/2X, 3X/4X



BLACK/EMERALD

Silky satin charmeuse bias-cut gown with plunging neckline, velvet trim, removable emerald jeweled pin and high side slit. Features open back with lace detail and small hook closure.



Silky satin charmeuse bias-cut chemise with plunging neckline, velvet trim and removable emerald jeweled pin. Features open back with lace detail and small hook closure.



STYLE 10408
EMERALD

S, M, L, XL



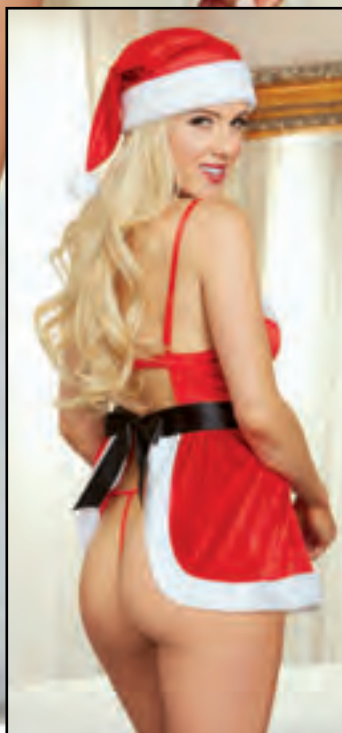
STYLE 10407
EMERALD

S, M, L, XL





Panné stretch velvet Santa apron babydoll with underwire cups, faux-fur trim, button & buckle details, adjustable shoulder straps, hook & eye bra closure and adjustable tie-back belt. Includes matching Santa hat and g-string.



STYLE 10432

S, M, L, XL



STYLE 10432X

1X/2X, 3X/4X



LIPSTICK RED

LIPSTICK RED

Satin charmeuse toga with fluffy marabou neckline, adjustable shoulder straps, open sides and side-tie closures with marabou pom-poms. (G-string not included.)



STYLE 10434X
LIPSTICK RED

1X/2X, 3X/4X



STYLE 10434
LIPSTICK RED

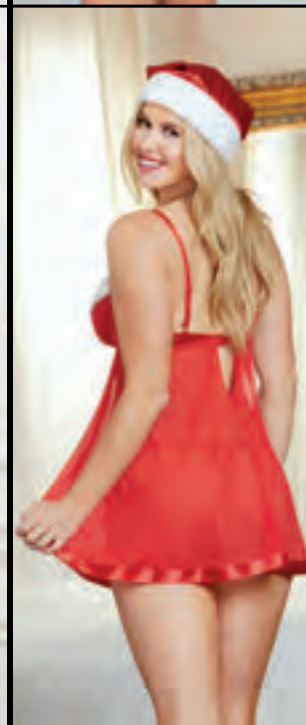
S, M, L, XL



Satin charmeuse camisole with fluffy marabou neckline, side slits and adjustable shoulder straps. Includes matching elastic-waist tap pant with open sides and marabou pom-pom side ties.



Stretch satin and mesh Santa babydoll with faux fur trim, gold jingle bell accents, underwire cups, adjustable shoulder straps and hook & eye back closure. Includes matching Santa hat and thong with faux side-tie bows and jingle bell accents.



STYLE 10435
LIPSTICK RED

S, M, L, XL



STYLE 10433
LIPSTICK RED

S, M, L, XL





Love is in the Air

STYLE 10426

Scalloped stretch galloon lace and patterned mesh apron babydoll with sequined heart-detailed underwire open cups, adjustable straps, hook & eye back closure and ribbon tie. Matching stretch mesh and lace thong included.



STYLE 10426
LIPSTICK RED

S, M, L, XL



STYLE 10426X
LIPSTICK RED

1X/2X, 3X/4X





Scalloped stretch galloon lace strappy teddy with sequined heart-detail underwire open cups, adjustable straps, hook & eye back closure and double strap g-string with back satin bow.



STYLE 10427
LIPSTICK RED

S, M, L, XL



Heart-jacquard, stretch-mesh, fully-boned bustier with underwire and molded, padded push-up cups. Features ruching detail along sides and cups, ruffled hem, adjustable straps, removable/adjustable garters, back hook and u-back detail. Matching panty included.



STYLE 10428
LIPSTICK RED

32, 34, 36, 38



Push-Up Cup

Silky satin charmeuse halter babydoll with sweetheart neckline, silver metal heart cup detail, peek-a-boo styling and wide, adjustable satin tie-back closures.

Silky satin charmeuse halter babydoll with sweetheart neckline, silver metal heart cup detail and wide, adjustable satin tie-back closures. Garment has been modified with a closed-front design.



STYLE 10425
LIPSTICK RED

S, M, L, XL

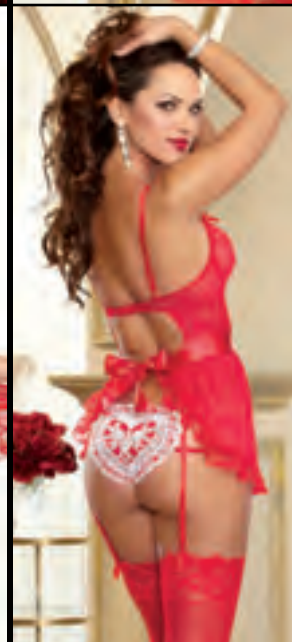


STYLE 10425X
LIPSTICK RED

1X/2X, 3X/4X



Stretch mesh underwire apron babydoll with embroidered heart detail, scalloped lace trim and ruffled lace hem. Features adjustable shoulder straps, hook & eye back closure, adjustable tie-back skirt and removable/adjustable garter straps. Includes matching panty with embroidered heart detail and double hip straps. Shown with Style 0005 thigh highs; sold separately.



STYLE 10038X
LIPSTICK RED

1X/2X, 3X/4X



STYLE 10038
LIPSTICK RED

S, M, L, XL





Love

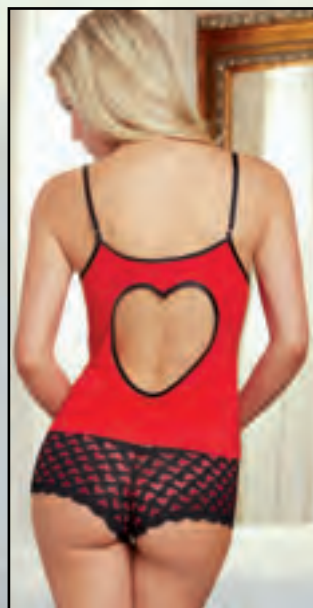
Sexy

Wake
me with a
Kiss

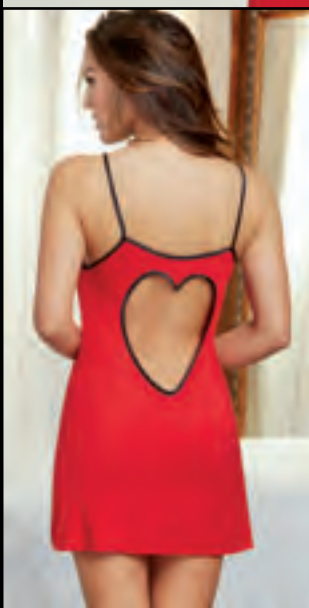
Slumber Party

STYLES 10040, 10430, 10431

Soft cotton and spandex jersey
camisole with rhinestone "Love"
accent, large open-back heart
detail, satin binding and adjustable
straps. Includes stretch lace panty
with contrast red hearts.



Soft cotton and spandex
jersey chemise with
rhinestone "Love" accent,
large open-back heart
detail, satin binding and
adjustable straps.



STYLE 10040
LIPSTICK RED/BLACK

S, M, L, XL



STYLE 10429
LIPSTICK RED

S, M, L, XL



Soft cotton and spandex jersey sleepshirt with black rhinestone "Sexy" accent, stretch lace neckline and shirrtail hem. Can be worn on or off the shoulders.



STYLE 10430
FUCHSIA

S, M, L, XL



STYLE 10430X
FUCHSIA

1X/2X, 3X/4X



Soft cotton and spandex jersey sleepshirt with "Wake Me with a Kiss" screen print, short sleeves and shirttail hem. This garment has been modified with a closed-back design.



Soft cotton and spandex jersey sleepshirt with "Wake Me with a Kiss" screen print, short sleeves, shirttail hem and draped cowl open back.



STYLE 10431X
BLACK

1X/2X, 3X/4X



STYLE 10431
BLACK

S, M, L, XL





Soft cotton and spandex jersey chemise with contrast scalloped lace neckline inset, adjustable criss-cross straps and low open back with lace inset detail.



Soft cotton and spandex jersey camisole with contrast scalloped lace neckline inset, adjustable shoulder straps and matching drawstring pant with side-seam lace inset detail.



STYLE 9703
ORCHID/BLACK,
RED/BLACK

S, M, L, XL



STYLE 9703X
ORCHID/BLACK,
RED/BLACK

1X/2X, 3X/4X



STYLE 9704
ORCHID/BLACK,
RED/BLACK

S, M, L, XL





STYLE 9818X
BLACK, CORAL,
MAGENTA

1X/2X, 3X/4X



Stretch lace
body-skimming
chemise with
lace-edge trim.
Matching g-string
included.



STYLE 9818
BLACK, CORAL,
MAGENTA

S, M, L, XL



STYLE 3717X
BLACK, ORCHID, RED, WHITE

1X/2X, 3X/4X



Charmeuse kimono robe
with attached belt. Includes
matching chemise with
adjustable criss-cross
straps and low back.
Matching padded
lingerie hanger
included. Shown
with Style 3863
charmeuse
drawstring pant;
sold separately.



STYLE 3863 (MEN'S) S, M, L, XL, XXL
BLACK, MIDNIGHT



STYLE 3717 (WOMEN'S) S, M, L
BLACK, ORCHID, RED,
WHITE

Silky satin charmeuse
camisole with contrast
lace detail, adjustable
shoulder straps and
matching fluttery
tap pant with
elastic waist.



Silky satin charmeuse
toga chemise with
contrast lace detail,
adjustable shoulder
straps and open sides
with satin ties.



STYLE 9697
LIPSTICK RED,
RASPBERRY

S, M, L, XL



STYLE 9719X
LIPSTICK RED,
MIDNIGHT, RASPBERRY

1X/2X, 3X/4X



STYLE 9719
LIPSTICK RED,
MIDNIGHT, RASPBERRY

S, M, L, XL





Silky satin charmeuse bias-cut halter chemise with adjustable straps and delicate draped fringe back detail.



STYLE 10096
LIPSTICK RED

S, M, L, XL



Silky knit chemise with scalloped sequin lace overlay, unlined sequined lace triangular cups, and adjustable double-strap criss-cross back.



STYLE 10029
BLACK, LIPSTICK
RED/BLACK

S, M, L, XL



Stretch satin underwire chemise with unlined demi cups, tulip-style hem, delicate stretch lace detail, adjustable shoulder straps and hook & eye back closure.



STYLE 10026
LIPSTICK RED

S, M, L, XL



Stretch mesh and draped fringe halter teddy with strappy back detail, snap crotch and back tie neck closure.



Scalloped stretch lace and mesh flyaway-back babydoll with double-tiered skirt, satin bow trim and hook & eye back closure. Matching thong included.

STYLE 8603
BLACK, CORAL,
PLUM, RED

S, M, L, XL



STYLE 7978
AQUA, FUCHSIA, RED

S, M, L, XL



Stretch lace underwire garter slip with molded cups and ruffled lace hem. Featuring adjustable shoulder straps, keyhole back with hook & eye closure and removable/adjustable garter straps. Matching thong included. Shown with Style 0005 thigh highs; sold separately.



STYLE 8626
BLACK, RED

S, M, L, XL



STYLE 8626X
BLACK, RED

1X/2X, 3X/4X





STYLE 9690X
BLACK/RED

1X/2X, 3X/4X



Cross-dye scalloped stretch lace and mesh garter slip with unlined triangular cups, lace peek-a-boo open back, adjustable shoulder straps, and adjustable/removable garter straps. Matching g-string included. Shown with Style 0005 thigh highs; sold separately.

STYLE 9690
BLACK/RED

S, M, L, XL



Stretch jacquard underwire garter slip with contrast ribbon lace-up, embroidered cups, adjustable straps, removable garters and hook & eye back closure. Matching g-string included. Shown with Style 0007 thigh highs; sold separately.

STYLE 10103
BLACK/RED

S, M, L, XL



Mesh double-layered tiered halter babydoll with unlined cross-dye stretch lace cups and adjustable tie-neck flyaway back. Matching stretch mesh thong with cross-dye lace front panel included.

STYLE 9692
BLACK/RED

S, M, L, XL





Satin charmeuse bias-cut chemise with sheer scalloped embroidery cups, bodice detail and low back with adjustable criss-cross straps.

STYLE 9662
BLACK, MAGENTA

S, M, L, XL



STYLE 9662X
BLACK, MAGENTA

1X/2X, 3X/4X



Point d'esprit stretch mesh and scalloped lace garter slip with unique-shaped underwire, keyhole opening and seaming details. Garter slip has adjustable shoulder straps, open back with hook & eye closure and attached/adjustable garter straps. Matching thong included. Shown with Style 0007 thigh highs; sold separately.

STYLE 10099
BLACK

S, M, L, XL



Point d'esprit stretch mesh and scalloped lace babydoll with unique-shaped underwire and keyhole details. Features adjustable shoulder straps and open back with hook & eye closure. Matching thong included.

STYLE 10100
BLACK

S, M, L, XL



Delicate draped fringe chemise with halter T-back styling and adjustable straps. Matching mesh g-string included.



STYLE 10102
MIDNIGHT

S, M, L, XL



Cross-dye stretch lace galloon underwire bustier with boning, adjustable shoulder straps and hook & eye back closure. Includes matching scalloped stretch lace panty with cut-out heart back detail and removable/adjustable garter straps. Shown with Style 0005 thigh highs; sold separately.



STYLE 9708
BLACK

S, M, L, XL



STYLE 9708X
BLACK

1X/2X, 3X/4X





Shimmer metallic sparkle stretch mesh gown with high triangle cups, body-skimming fit, dramatic back train and halter T-back strap. Matching g-string included.



STYLE 10013

S, M, L, XL



BLACK



Delicate lace open-front gown with scalloped lace-edge trim, long sleeves and adjustable ribbon tie-front closure. Matching lace g-string included. Pairs well with Styles 9386 lace shelf bra, 8735 lace garter belt and 0005 thigh highs; sold separately.



STYLE 10095

S, M, L, XL



BLACK

Floral lace underwire apron babydoll with ruffled lace and contrast ribbon details. Features adjustable shoulder straps, hook & eye back closure, tie-back skirt and attached/adjustable garter straps. Matching g-string included. Shown with Style 0005 thigh highs; sold separately.



STYLE 10020
BLACK

S, M, L, XL



Retro-inspired fishnet babydoll with tie-front closure and ruffled lace neckline, hem and edge detail. Neckline can be worn on or off the shoulder. Matching g-string included.



STYLE 10109

S, M, L, XL

BLACK



Stretch fishnet garter slip with underwire demi cups, adjustable straps, lace and princess seam details, removable/adjustable garters and hook & eye back closure. Matching g-string included. Shown with Style 0007 thigh highs; sold separately.



STYLE 10110
BLACK

S, M, L, XL



Satin and venice lace fully-boned corset with lace-up front detail, high-low attached skirt, lace shoulder straps and back zipper closure. Lace straps can be worn on or off the shoulder. Matching thong included.



STYLE 10028
LIPSTICK RED,
PEARL WHITE

32, 34, 36, 38

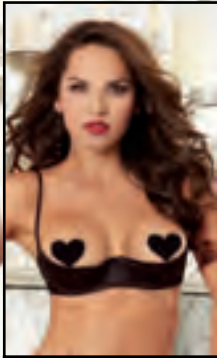


STYLE 10028X
LIPSTICK RED,
PEARL WHITE

40, 42, 44



Satin open-cup underwire shelf bra with zig-zag topstitch detailing, stretch mesh back, adjustable shoulder straps and hook & eye back closure. Shown with Style 9382 garter belt and 0007 thigh highs; sold separately. (Pasties and g-string not included.)



STYLE 9385 32, 34, 36, 38
BLACK, RED, WHITE



Stretch lace open-cup underwire shelf bra with adjustable shoulder straps and hook & eye back closure. Shown with Styles 8735 garter belt and 0005 thigh highs; sold separately. (Pasties and g-string not included.)



STYLE 9386 32, 34, 36, 38
BLACK, HOT PINK, SAPPHIRE, WHITE



Scalloped stretch lace open-cup underwire shelf bra with contrast bow, adjustable shoulder straps and hook & eye back closure. Shown with Style 7177 boyshort panty; sold separately. (Pasties not included.)



STYLE 9763 32, 34, 36, 38
BLACK, RED 40, 42, 44



Dotted stretch mesh open-cup underwire shelf bra with large satin bow, adjustable shoulder straps and hook & eye back closure. Shown with Styles 9651 garter belt and 0007 thigh highs, sold separately. (Pasties and g-string not included.)



STYLE 9761 32, 34, 36, 38
BLACK





Dreamgirl
RED
diamond



One Size Fits Most

Sapphire

Style 10040



Stretch lace halter chemise with plunging neckline and low back. Features rhinestone criss-cross details, scalloped-edge lace trim and adjustable tie-neck closure. Matching stretch lace g-string included.



STYLE 10440X
SAPPHIRE

O/S QUEEN



Stretch lace garter belt with scalloped hem and hook & eye back closure. Shown with Style 0005 thigh highs; sold separately. (G-string not included.)



STYLE 8735
BLACK, HOT PINK,
RED, SAPPHIRE, WHITE

O/S
O/S QUEEN



STYLE 10440
SAPPHIRE

O/S



Sparkle mesh high-neck babydoll with plunging halter, flyaway open back and ribbon-tie closure. Features sequin detail on neck and underbust. Matching thong included.



Scalloped stretch lace halter teddy with adjustable ribbon-tie closures, open crotch, criss-cross elastic back and sequin trim. Matching sequined wrist restraints with velcro closure included.



Open Crotch
Wrist Restraints Included

STYLE 10445
SAPPHIRE

O/S

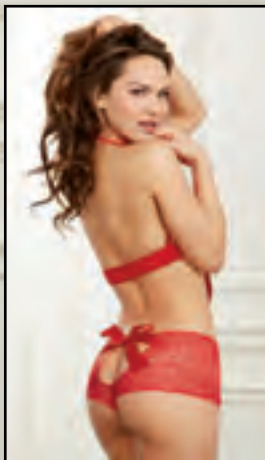


STYLE 10439
EMERALD

O/S



Stretch scalloped lace open-cup halter bralette with tie-front satin ribbon, adjustable halter ties and velcro back closure. Includes matching stretch lace panty with open crotch and peek-a-boo back.



Open Crotch

STYLE 10472

O/S

LIPSTICK RED



Three-piece set; Mesh open-cup babydoll with embroidered venice lace trim, flyaway open-back detail, adjustable halter ties and satin ribbon hem accent. Includes embroidered venice lace eye mask with adjustable ribbon ties and matching thong. (Pasties not included.)



Lace Eye Mask Included



STYLE 10150

O/S

LIPSTICK RED



Stretch mesh strappy, open-cup teddy with adjustable straps, open-back panty and sparkle mesh bow detail.



STYLE 10461

O/S

LIPSTICK RED



Stretch mesh open-cup babydoll with stretch lace trim, satin ribbon ties, adjustable shoulder straps and tie-back closure. Matching stretch lace open-crotch panty included.



Open Crotch

STYLE 10476X
HOT PINK

O/S QUEEN



Open Crotch

STYLE 10476
HOT PINK

O/S





Metallic sparkle-mesh halter babydoll with sequin trim, flyaway open back and adjustable tie-back closures. Matching panty with peek-a-boo open-back detail and sequin trim included.



STYLE 10442X
BLACK

O/S QUEEN



Stretch mesh cheeky panty with stretch lace trim and metallic gold "Jingle all the Way" embroidery detail.

STYLE 1427
BLACK/GOLD

S, M, L, XL,
1X/2X, 3X/4X



STYLE 10442
BLACK

O/S





Open-cup strappy teddy with beaded fringe detail, adjustable halter ties and open crotch. Matching beaded-fringe wrist restraints included. (Pasties not included.)

Open Crotch
Wrist Restraints Included



Metallic fishnet halter bodystocking with metallic elastic trim and open crotch. (G-string not included.)



Open Crotch

STYLE 10475
BLACK

O/S



STYLE 0261
BLACK

O/S



Santa stretch mesh open-front babydoll with attached hood, marabou feather trim and uneven hem with jingle bell details. Includes adjustable ribbon belt with buckle and matching g-string.



STYLE 10438

O/S

63

"JINGLE BELL HOTTIE"



STYLE 10438X

O/S QUEEN

"JINGLE BELL HOTTIE"



Stretch knit
off-the-shoulder
tunic with marabou
neckline, ¾-length
sleeves, keyhole
back and satin
ribbon closure.
(G-string not
included.)



STYLE 10437X
"SANTA'S CUTIE"

O/S QUEEN



STYLE 10437
"SANTA'S CUTIE"

O/S



Stretch mesh, foiled microfiber and marabou-collared teddy with side-tie closures, separate marabou-trimmed bandeau, detachable leash and O-ring detail. Can be worn with or without bandeau.

Stretch lace garter belt with attached fishnet thigh highs. Features marabou feather trim, center back seam and satin bow detail at ankle. (G-string and pasties not included.)



Novelty Leash Included

STYLE 10436

O/S



STYLE 0259

O/S



LIPSTICK RED

Seamless fishnet halter chemise with large heart details on front and back. Matching fishnet fingerless glove wrist restraints included. (G-string not included.)



Wrist Restraints Included

STYLE 10444
LIPSTICK RED

O/S



Strappy teddy with satin ribbons and tie-back closures. Featuring sequined g-string and hearts.

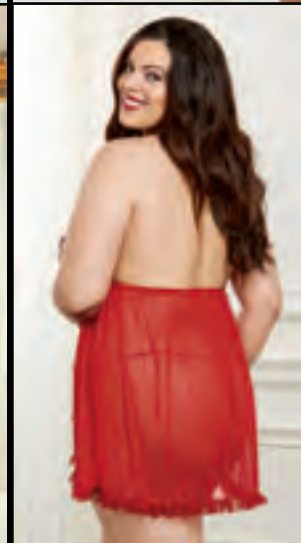
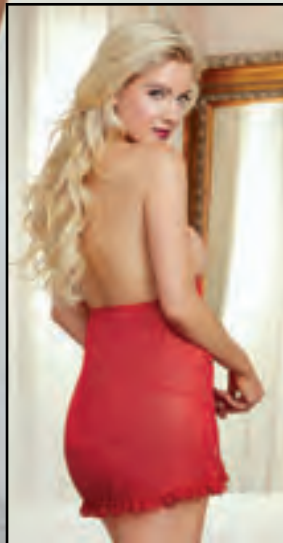


STYLE 10449
LIPSTICK RED

O/S



Ruffled mesh flyaway-front babydoll with strappy sequined-heart open cups and tie-back closure. Matching sequined g-string included.



STYLE 10448

O/S

LIPSTICK RED



STYLE 10448X

O/S QUEEN

LIPSTICK RED



Heart cross-dyed stretch galloon lace and stretch mesh chemise with high neck, plunging keyhole front, tie-back closure and lace-up back. Back on plus style is slightly modified for more coverage. Matching g-string included.



STYLE 10450X
BLACK

O/S QUEEN



STYLE 10450
BLACK

O/S





Heart cross-dyed stretch galloon lace teddy with plunging neckline, adjustable criss-cross shoulder straps and thong back. Teddy has wrap around design with adjustable front satin waist tie and back bow.



Best Seller Added in Plus-Size

STYLE 10061

O/S



BLACK/LIPSTICK RED

STYLE 10061X

O/S QUEEN



BLACK/LIPSTICK RED

Seamless stretch lace tunic with ¾-length sleeves, high neck with snap closure, and open back with adjustable lace-up detail. (G-string not included.)



STYLE 10145
BLACK

O/S



Stretch lace high-neck chemise with low back, scalloped lace trim, velvet elastic straps and back-neck closure. Matching g-string included.



STYLE 10115
BLACK

O/S



STYLE 9720X
BLACK

O/S QUEEN



STYLE 9720
BLACK

O/S





Three-piece set. Embroidered venice lace trim collar with tie-back closure, attached chain restraints and lace glovelettes. Matching g-string and lace eye mask included. (Pasties not included.)

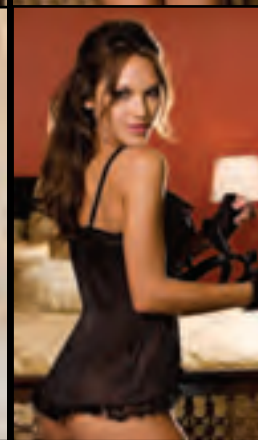
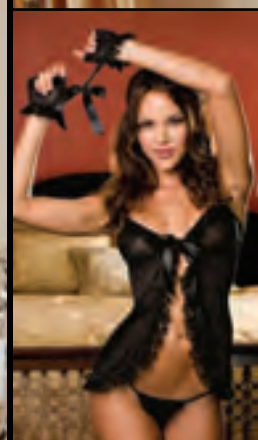


10147
BLACK

O/S



Tie-front babydoll with lace detail and matching open-crotch thong. Includes matching fingerless, lace-edged gloves with ribbon restraints.



STYLE 4873
BLACK, RED

O/S



Scalloped eyelash lace apron babydoll with ruffled organza trim, tie-back closures, attached elastic garter straps and matching heart cut-out panty. Shown with Style 0005 thigh highs; sold separately.



STYLE 9725
BLACK, WHITE

O/S



STYLE 9725X
BLACK, WHITE

O/S QUEEN





STYLE 10140X O/S QUEEN
LIPSTICK RED/BLACK



STYLE 10140 O/S
LIPSTICK RED/BLACK



Stretch lace plunge-front chemise with low back, contrast scalloped lace edging, crossover detail, faux front lace-up and back neck tie. Matching g-string included.



STYLE 9732X O/S QUEEN
LIPSTICK RED/BLACK, ORCHID/BLACK



STYLE 9732 O/S
LIPSTICK RED/BLACK, ORCHID/BLACK





Stretch mesh halter babydoll with stretch lace cups, adjustable neck ties, ruffle hem and flyaway back. Matching open-crotch lace tanga panty and wrist restraints with silver "Naughty" details included.



Open Crotch
Wrist Restraints Included

STYLE 9120
RED

O/S



Open Crotch
Wrist Restraints Included

STYLE 9120X
RED

O/S QUEEN

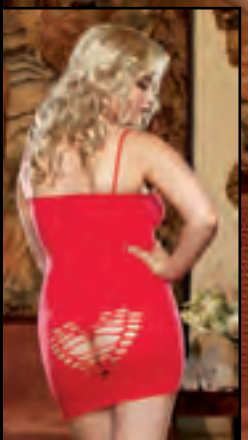


Seamless chemise with plunging slash-detailed front and slash heart back. Matching g-string included.



STYLE 8650
RED

O/S



STYLE 8650X
RED

O/S QUEEN





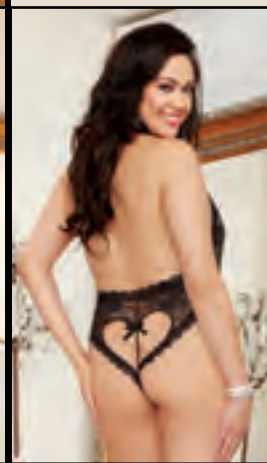
Stretch lace halter teddy with plunging neckline, adjustable halter ties and large heart cut-out detail on back.

Stretch lace and mesh open-back chemise with adjustable criss-cross shoulder straps and elastic strappy back detail. Matching thong included.



STYLE 8665
RED, TURQUOISE

O/S



STYLE 8694 O/S
BLACK, IRIS,
RED, WHITE



STYLE 8694X O/S QUEEN
BLACK, IRIS,
RED, WHITE



Flyaway babydoll with underwire open cups, contrast ruffled-organza trim, large satin bow detail, adjustable shoulder straps and tie-back closure. Matching garter thong included. Shown with Style 0005 thigh highs; sold separately. (Pasties not included.)



STYLE 9727

O/S

BLACK/FUCHSIA



Scalloped stretch lace halter teddy with contrast ribbon details, tie-back closures, and open back panty. Matching lace and ribbon wrist restraints included.



Stretch lace high-neck teddy with low back, scalloped lace trim, velvet elastic criss-cross straps, back neck closure and snap crotch.



Wrist Restraints Included

STYLE 10114

O/S

MAGENTA



STYLE 9726

O/S

BLACK/FUCHSIA



Dreamgirl

Night Out

dress collection



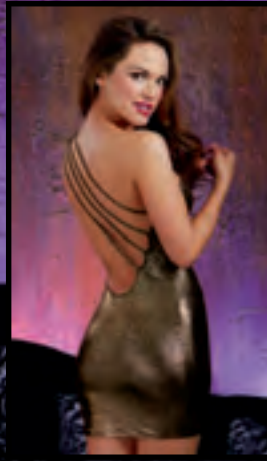
Medium

Gold

Style 10453



Stretch jersey and gold foil overlay one-shoulder minidress with ring detail and four-strap low back.



STYLE 10453
GOLD

S, M, L



Stretch jersey dress with plunging neckline, gold chain accent, 3/4-length sleeves, side-seam shirring, asymmetrical hem and open back with button-and-loop closure.



Microfiber and stretch mesh knee-length, one-shoulder dress with asymmetrical illusion detailing and open back.



STYLE 10486
BLACK

S, M, L



STYLE 10455
ROUGE

S, M, L



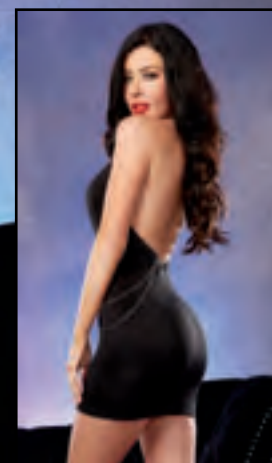
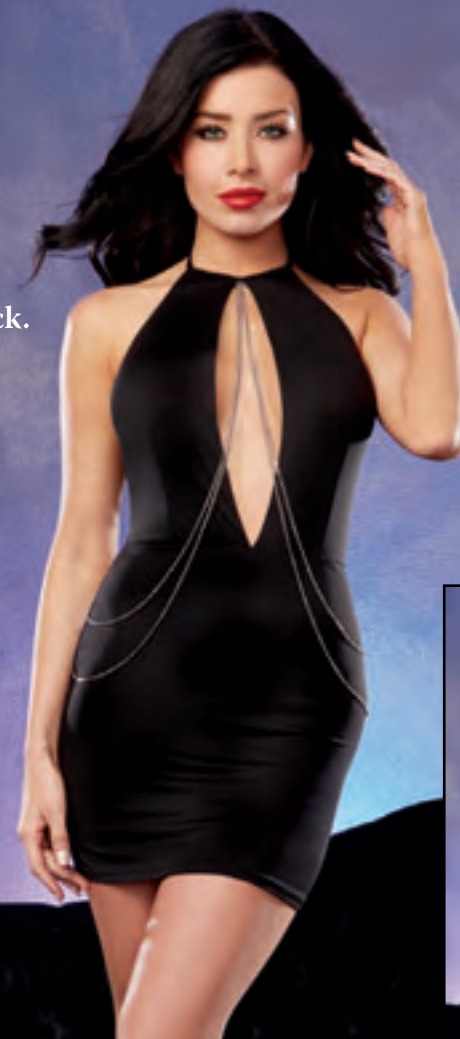
Stretch jersey mid-thigh dress with ruched front and six-way adjustable straps.



Convertible Dress - 6 Styles in 1



Stretch microfiber halter dress with plunging keyhole neckline, draped chain details, adjustable tie-neck closure and open back.



STYLE 10185

S, M, L

BLACK



Stretch microfiber halter dress with asymmetrical faux leather neckline, open back and adjustable hook closure.



STYLE 10193

S, M, L

RED



STYLE 10186

S, M, L

BLACK



Stretch lace garter belt with scalloped hem and hook & eye back closure. Shown with Style 0006 thigh highs; sold separately. (Thong not included.)



Dotted stretch mesh garter belt with front diamond cutouts, satin bow trim, adjustable garter straps and hook & eye back closure. Shown with Style 0007 thigh highs; sold separately. Also pairs well with Style 9761 open-cup shelf bra. (G-string not included.)



STYLE 9651

O/S

BLACK



Satin-front garter belt with zig-zag topstitch detailing, stretch mesh back, adjustable garter straps and hook & eye back closure. Shown with Style 0005 thigh highs; sold separately. (Thong not included.)



STYLE 8735
BLACK, HOT PINK, RED,
SAPPHIRE, WHITE

O/S
O/S QUEEN



STYLE 9382
BLACK, RED, WHITE

O/S
O/S QUEEN





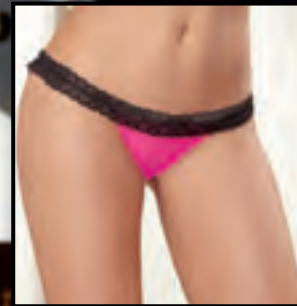
Stretch galloon lace boyshort with metallic cross-dye hearts, open-back heart detail and open crotch.

Open Crotch

STYLE 1409 S, M, L, XL
RED/SILVER 1X/2X, 3X/4X



Stretch mesh panty with lace ruffle trim and open-back heart detail.



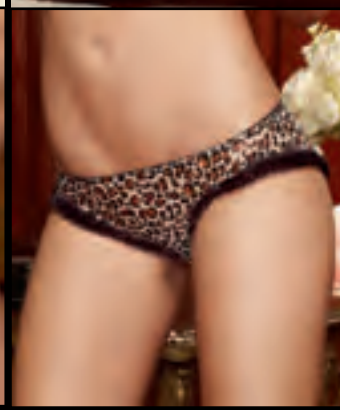
STYLE 1377 S, M, L, XL
HOT PINK/BLACK, 1X/2X, 3X/4X
LIME/BLACK, RED/BLACK



HOT PINK/BLACK AND RED/BLACK ONLY



Leopard-print stretch mesh panty with lace ruffle trim and open-back heart detail.



STYLE 1393 S, M, L, XL
LEOPARD 1X/2X, 3X/4X



Three-pack stretch mesh cheeky panty with lace trim and day of the week embroidery: Frisky Friday, Steamy Saturday, Sexy Sunday.



Weekender Panty 3-Pack



Three-pack stretch mesh cheeky panty with lace trim and day of the week embroidery: F*ck Me Friday, Spank Me Saturday, Seduce Me Sunday.



Weekender Panty 3-Pack

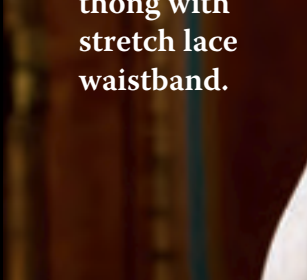
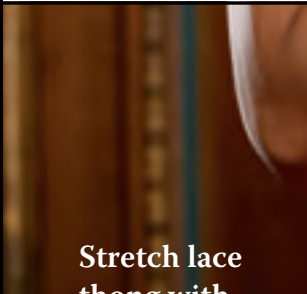
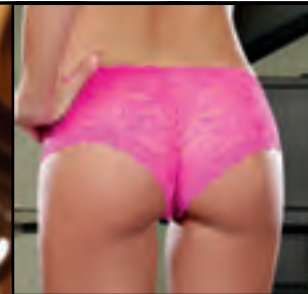
STYLE 1425 S, M, L, XL
ASSORTED 1
(BLACK, HOT PINK, TURQUOISE) 1X/2X, 3X/4X



STYLE 1405 S, M, L, XL
ASSORTED 1
(RED/BLACK/HOT PINK) 1X/2X, 3X/4X



Stretch lace cheeky-hipster panty with scalloped lace trim and satin bow.



Stretch lace thong with stretch lace waistband.



STYLE 1375 S, M, L, XL
BLACK, HOT PINK,
RED, TURQUOISE

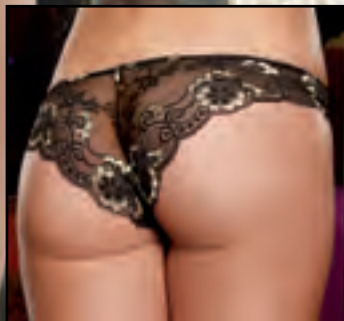


STYLE 1376 O/S
BLACK, RED, WHITE





Microfiber cheeky panty with cross-dye lace back and satin bow trim.



STYLE 1380
BLACK/GOLD, IRIS/BLACK,
PEARL WHITE, RED/BLACK

S, M, L, XL



Cross-dye lace and microfiber thong.



STYLE 1391

S, M, L, XL

BLACK/GOLD

1X/2X, 3X/4X



Strappy fishnet thong with silver ring trim and detachable feather tickler.



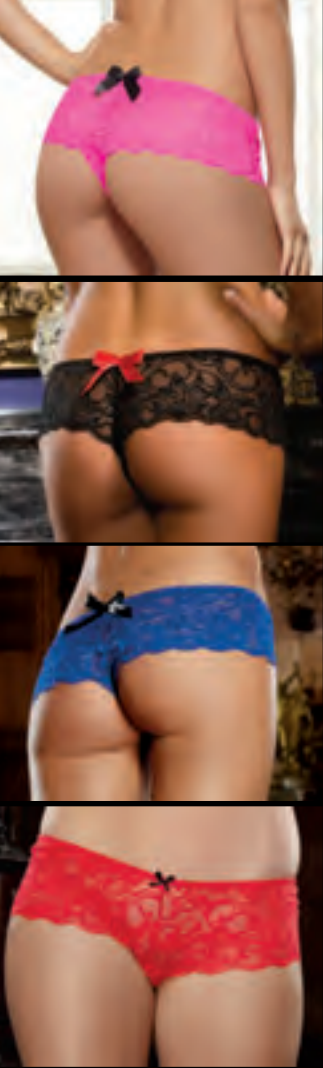
Feather Tickler Included

STYLE 1386

S/M, M/L

BLACK



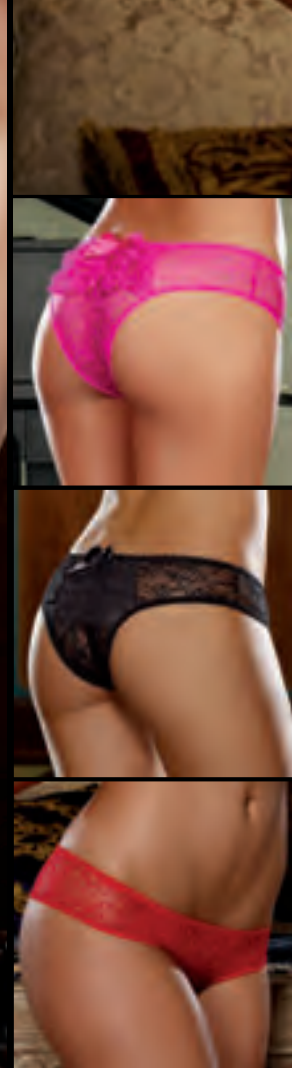


Stretch lace cheeky boyshort with open crotch and satin bow detail.



STYLE 7177
BLACK, CORAL, HOT PINK, RUBY,
SAPPHIRE, TURQUOISE, WHITE

S, M, L
1X/2X, 3X/4X



Stretch lace low-rise panty with open crotch and ruffled back detail.

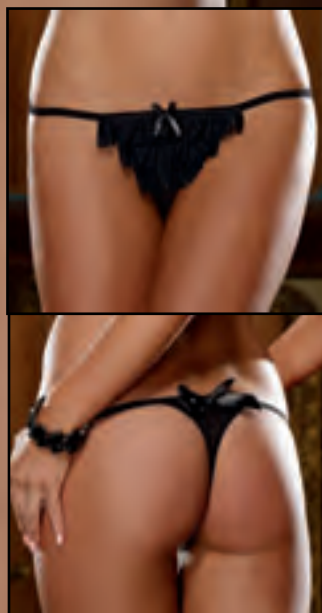


STYLE 1300
BLACK, HOT PINK,
RED, WHITE

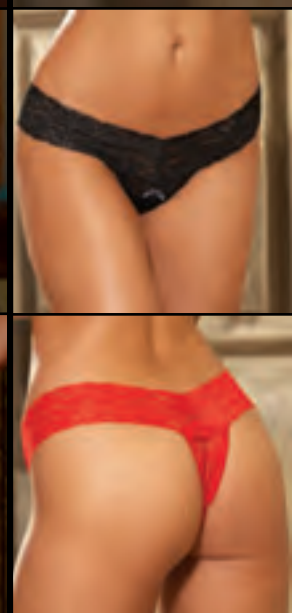
S, M, L
1X/2X, 3X/4X



Stretch mesh ruffled-front thong with open crotch and satin bow accent.



Stretch lace thong with open crotch.



STYLE 1335
BLACK, RED

O/S





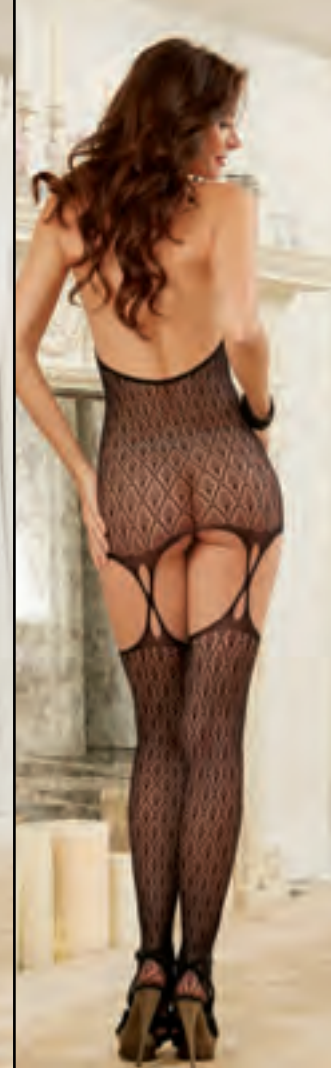
Sheer high-neck garter dress with lace trim and attached thigh-high stockings. (Thong not included.)

100% Nylon



Art-deco pattered lace garter dress with adjustable halter ties and attached thigh-high stockings with criss-cross garter straps. (G-string not included.)

90% Nylon
10% Spandex



STYLE 0035
BLACK, RED

O/S



STYLE 0240
BLACK

O/S

O/S QUEEN



Lace high-neck garter dress with fishnet sides, snap collar closure and attached thigh-high stockings. (G-string not included.)

90% Nylon
10% Spandex



Sheer garter dress with knitted lace design, back bow motif, adjustable halter-tie closure and attached thigh-high stockings. (Thong not included.)

90% Nylon
10% Spandex



STYLE 0226
BLACK

O/S



STYLE 0211
BLACK

O/S

O/S QUEEN





Semi-sheer garter dress with ¾-length, off-the-shoulder sleeves, stretch lace trim and attached thigh-high stockings. (G-string not included.)

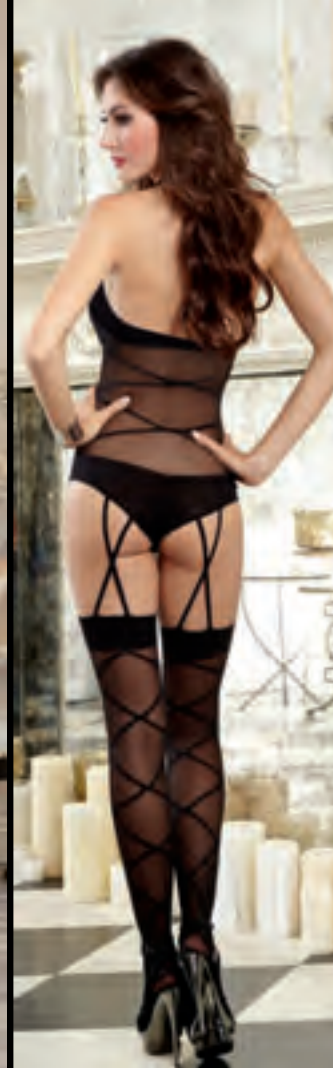
100% Nylon

STYLE 0237

O/S

BLACK

O/S QUEEN



Sheer halter teddy bodystocking with opaque knitted bra & panty, criss-cross motif, snap collar closure, snap crotch and attached thigh-high stockings with criss-cross garter straps.

90% Nylon
10% Spandex

STYLE 0212

O/S

BLACK



Sheer two-way garment with scalloped lace detail. Can be worn as a strapless bodystocking with open crotch, or upside-down as a long-sleeved dress. (G-string not included.)

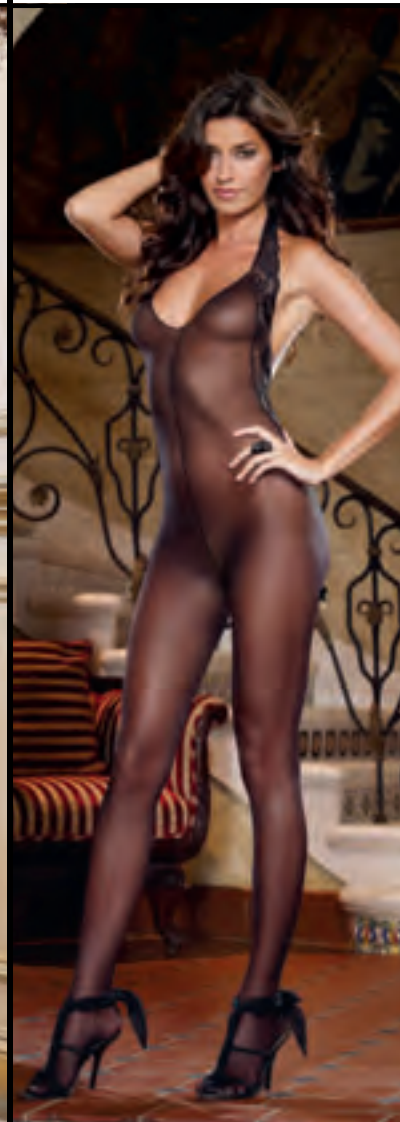
90% Nylon
10% Spandex

Versatile - 2 Styles in 1

STYLE 0245

O/S

BLACK



Sheer halter bodystocking with lace-trimmed v-back and center thigh seam with satin bow detail.

85% Nylon
15% Spandex

STYLE 0128

O/S

BLACK



Stretch lace garter belt and attached sheer thigh-high stockings with knitted heart seam and opaque scallop details to knee. (Thong not included.)

95% Nylon
5% Spandex



STYLE 0193
BLACK

O/S



Sheer garter belt and thigh-high stockings with contrast back seam, "Naughty" embroidered lettering, ankle bow detail and attached lace garters. (G-string not included.)

72% Nylon
15% Polyester
13% Spandex



STYLE 0197
BLACK/RED, NUDE/BLACK

O/S



Sheer nude pantyhose with black opaque lace-up boot design. Pantyhose can be worn with lace-up detail in front or back.

93% Nylon
7% Spandex



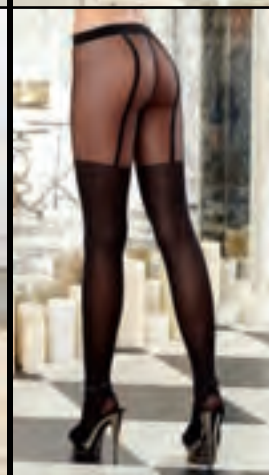
STYLE 0220
BLACK

O/S



Sheer pantyhose with opaque knitted garters and thigh-high stocking detail.

67% Polyester
28% Nylon
5% Spandex



STYLE 0217
BLACK

O/S





Sheer thigh-high stockings with opaque lace-up boot design and ribbon bow. Stockings can be worn with lace-up detail in front or back. Shown with Style 9382 garter belt; sold separately. (G-string not included.)

49% Polyester
44% Nylon
7% Spandex



Sheer thigh-high stockings with back seam. Shown with Style 9382 garter belt; sold separately. (Thong not included.)

100% Nylon

STYLE 0219

O/S

BLACK, NUDE/BLACK



STYLE 0007

BLACK, NUDE,
RED, WHITE

O/S

O/S QUEEN



Cuban-heeled thigh-high stockings with back seam and stay-up silicone wide lace topper. Shown with Style 1376 lace thong; sold separately.

78% Nylon
22% Spandex

Sheer thigh-high stockings with stay-up silicone contrast lace topper and satin bow detail. Shown with Style 1376 thong; sold separately.

85% Nylon
15% Spandex



Sheer thigh-high stockings with stay-up silicone lace topper and back seam with bow detail at calf. Shown with Style 1376 thong; sold separately.

88% Nylon
12% Spandex



STYLE 0253

O/S

87 NUDE/BLACK



STYLE 0026
BLACK/PINK,
BLACK/RED

O/S



STYLE 0081
BLACK, HOT PINK,
WHITE

O/S



Fishnet thigh-high stockings with back seam and stay-up silicone lace topper. Shown with Style 1376 thong; sold separately.

80% Nylon
20% Spandex



Sheer thigh-high stockings with stay-up silicone lace top. Shown with Style 1376 thong; sold separately.

85% Nylon
15% Spandex



STYLE 0001 O/S
BLACK, NUDE, WHITE O/S QUEEN



STYLE 0005 O/S
BLACK, NUDE, RED, WHITE O/S QUEEN



Neon fishnet thigh-high stockings with back seam and stay-up silicone lace topper. Shown with Style 1376 thong; sold separately.

80% Nylon
20% Spandex



Fishnet thigh-high stockings with lace top. Shown with Style 8735 garter belt; sold separately. (G-string not included)

100% Nylon



Neon sheer thigh-high stockings with stay-up silicone lace topper. Shown with Style 1376 thong; sold separately.

85% Nylon
15% Spandex



STYLE 0001N O/S
HOT PINK O/S QUEEN



STYLE 0006 O/S
BLACK, RED O/S QUEEN



STYLE 0005N O/S
NEON PINK O/S QUEEN



Red stretch crushed-velvet dress with faux fur trim at neckline and hem. Includes matching long-sleeve shrug, belt, jingle bell stocking toppers and Santa hat. (Thigh highs and gloves not included.)



STYLE 8870

S, M, L, XL

“SANTA BABY”

Red zipper-front crushed velvet dress with faux fur trim, pom-pom tie hood and attached tulle petticoat. (Additional petticoat not included.)



STYLE 4552

XS, S, M, L

“SLEIGH BELLE”



Velvet candy-cane striped dress with full satin skirt. Includes velvet shrug, Santa hat, belt and stocking-topper bow pins with candy appliques. (Candy cane and thigh highs not included.)

STYLE 10325

S, M, L, XL

“CANDY CANE CUTIE”



Stretch knit corset-style dress with brocade bodice, adjustable lace-up front panel, satin skirt and attached apron with shamrock details. Includes matching mini top-hat headband, hair ribbons and leg garter. (Beer mug, thigh highs and petticoat not included.)

STYLE 8888
"LADY LUCK"

S, M, L, XL



Shamrock vest with attached dickey and bowtie. Includes "Irish You Were Naked" pin, large velvet leprechaun hat and shoe buckle clips. (Pants not included.)

STYLE 10328
"IRISH U WERE
NAKED LEPRECHAUN"

M, L, XL, XXL



Stretch knit strapless dress with attached belt, felt clover detail skirt and puff sleeves. Includes hat, pot of gold bag and riding crop. (Thigh highs not included.)

STYLE 5199
"SPANK ME I'M IRISH"

S, M, L



Green and purple foil-print dress with adjustable/removable shoulder straps and multi-layered ruffled skirt with gold sequin trim. Includes matching shrug with sequin trim. (Jewelry not included.)

STYLE 8878
"MARDI GRAS MAVEN"

S, M, L, XL



Dreamgirl

P L U S

c o l l e c t i o n



STYLE 10463X



STYLE 10415X 1X/2X, 3X/4X

BLACK
Image also seen on page 14



STYLE 10417X 1X/2X, 3X/4X

BLACK
Image also seen on page 12



STYLE 10451 O/S

SILVER
Image also seen on page 4



STYLE 10463X 1X/2X, 3X/4X

GARNET
Image also seen on page 8



STYLE 10479X 1X/2X, 3X/4X

BLACK/EMERALD
Image also seen on page 29



STYLE 10420X 1X/2X, 3X/4X

LIPSTICK RED
Image also seen on page 23



STYLE 10443X 1X/2X, 3X/4X
LIPSTICK RED

Image also seen on page 20



STYLE 10414X 1X/2X, 3X/4X
LIPSTICK RED,
SAPPHIRE

Image also seen on page 19



STYLE 8718X 1X/2X, 3X/4X
LAVENDER, LIPSTICK RED,
MIDNIGHT, WHITE

Image also seen on page 18





STYLE 10414X 1X/2X, 3X/4X

LIPSTICK RED, SAPPHIRE

Image also seen on page 24



STYLE 10410X 1X/2X, 3X/4X

SAPPHIRE

Image also seen on page 25



STYLE 10430X 1X/2X, 3X/4X

FUCHSIA

Image also seen on page 41



STYLE 10431X 1X/2X, 3X/4X

BLACK

Image also seen on page 42



STYLE 10432X 1X/2X, 3X/4X

LIPSTICK RED

Image also seen on page 31



STYLE 10434X 1X/2X, 3X/4X

LIPSTICK RED

Image also seen on page 32



STYLE 10425X 1X/2X, 3X/4X

LIPSTICK RED

93 Image also seen on page 37



STYLE 10426X 1X/2X, 3X/4X

LIPSTICK RED

Image also seen on page 35



STYLE 10038X 1X/2X, 3X/4X

LIPSTICK RED

Image also seen on page 38





STYLE 10028X 40, 42, 44
LIPSTICK RED,
PEARL WHITE
Image also seen on page 13



STYLE 9703X 1X/2X, 3X/4X
ORCHID/BLACK,
RED/BLACK
Image also seen on page 43



STYLE 9719X 1X/2X, 3X/4X
LIPSTICK RED,
MIDNIGHT, RASPBERRY
Image also seen on page 45



STYLE 8626X 1X/2X, 3X/4X
BLACK, RED
Image also seen on page 47



STYLE 3717X 1X/2X, 3X/4X
BLACK, ORCHID,
RED, WHITE
Image also seen on page 44



STYLE 9818X 1X/2X, 3X/4X
BLACK, CORAL, MAGENTA
Image also seen on page 44



STYLE 9662X 1X/2X, 3X/4X
BLACK, MAGENTA
Image also seen on page 49



STYLE 9690X 1X/2X, 3X/4X
BLACK/RED
Image also seen on page 48



STYLE 9708X 1X/2X, 3X/4X
BLACK
Image also seen on page 50



STYLE 10440X O/S QUEEN
SAPPHIRE
Image also seen on page 57



STYLE 10442X O/S QUEEN
BLACK
Image also seen on page 61



STYLE 10476X O/S QUEEN
HOT PINK
Image also seen on page 60





STYLE 10438X O/S QUEEN
"JINGLE BELL HOTTIE"

Image also seen on page 63



STYLE 10437X O/S QUEEN
"SANTA'S CUTIE"

Image also seen on page 64



STYLE 10448X O/S QUEEN
LIPSTICK RED

Image also seen on page 67



STYLE 10061X O/S QUEEN
BLACK/LIPSTICK RED

Image also seen on page 69



STYLE 10450X O/S QUEEN
BLACK

Image also seen on page 68



STYLE 9720X O/S QUEEN
BLACK

Image also seen on page 70



STYLE 9725X O/S QUEEN
BLACK, WHITE

Image also seen on page 71



STYLE 10140X O/S QUEEN
LIPSTICK RED/BLACK

Image also seen on page 72



STYLE 8694X O/S QUEEN
BLACK, IRIS,
RED, WHITE

95 Image also seen on page 74



STYLE 9732X O/S QUEEN
LIPSTICK RED/BLACK,
ORCHID/BLACK

Image also seen on page 72



STYLE 8650X O/S QUEEN
RED

Image also seen on page 73

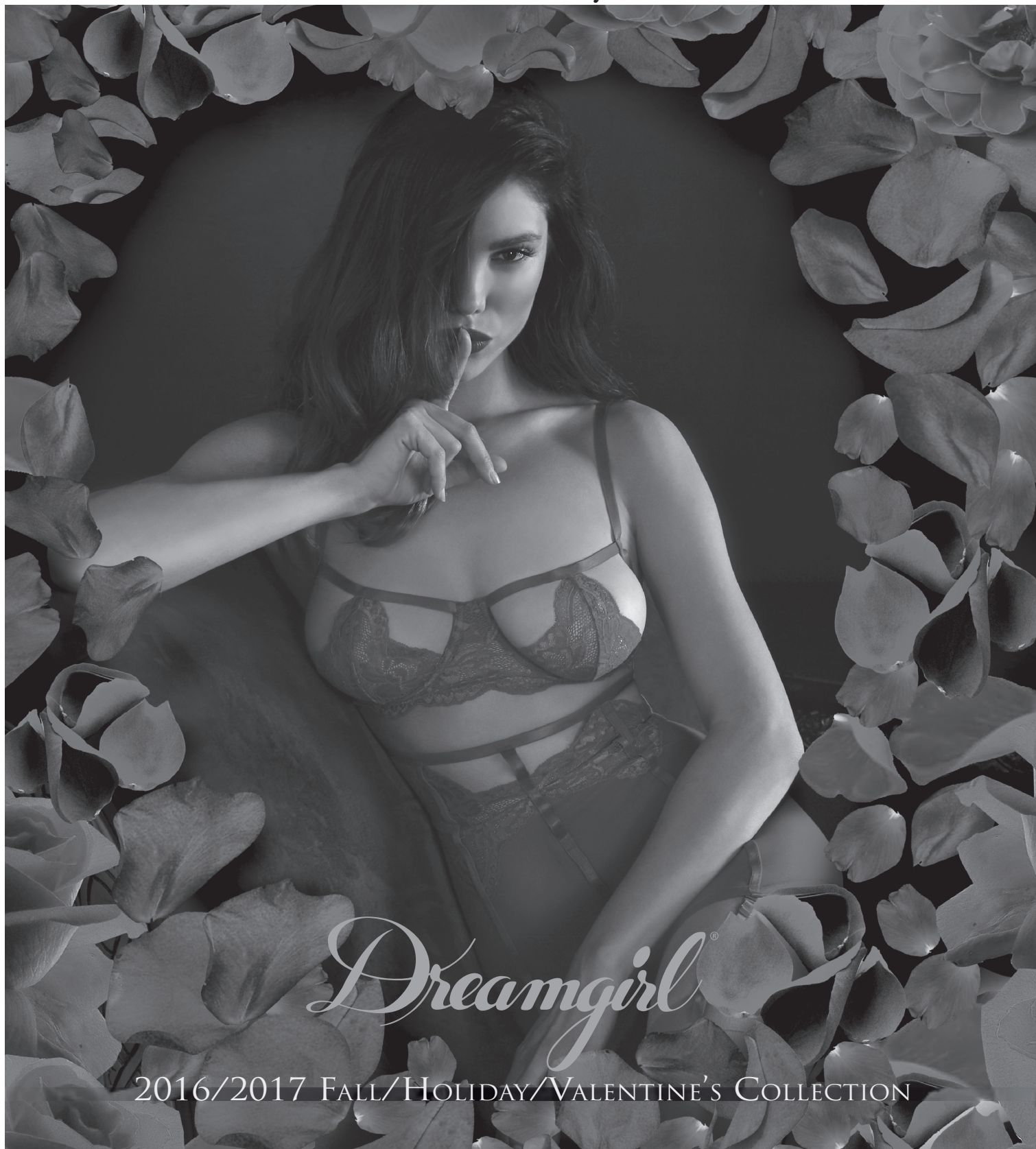


STYLE 9120X O/S QUEEN
RED

Image also seen on page 73



Please Tear Along Perforated Edge to Remove 2016/2017 Fall/Holiday/Valentines Collection Guide



Dreamgirl Catalog Calendar

Catalogue	Month Issued	Duration
Collection	November	December-December
Costume Collection	December	January - October
Encore Collection	March	March-March
Fall/Holiday/Valentines	June	June - February

Men's Size Chart

SIZE	US	UK	EU	US	UK	EU	US	UK	EU	US	UK	EU
	M			L			XL			XXL		
NECK	15-15 1/2"	15-15 1/2"	38cm-39cm	16-16 1/2"	16-16 1/2"	41cm-42cm	17-17 1/2"	17-17 1/2"	43cm-44cm	18-18 1/2"	18-18 1/2"	46cm-47cm
CHEST	38"-40"	38"-40"	97cm-102cm	42"-44"	42"-44"	107cm-102cm	46"-48"	46"-48"	117cm-122cm	50"-52"	50"-52"	127cm-132cm
WAIST	32"-34"	32"-34"	81cm-86cm	36"-38"	36"-38"	91cm-97cm	40"-42"	40"-42"	102cm-107cm	44"-46"	44"-46"	112cm-117cm

SIZE	M/L	L/XL
US	150lbs-200lbs	200lbs-250lbs
INTERNATIONAL	70kg-90kg	91kg-114kg

Women's US Size Chart

SIZE	REGULAR SIZES						PLUS SIZES		ONE SIZE		
	XS	S	M	L	XL	S/M	M/L	1X/2X	3X/4X	O/S	O/S QUEEN
SIZE	0-2	2-6	6-10	10-14	14-16	2-8	8-14	16-18	18-20	2-14	16-20
CUP	A	A/B	B-C	C/D	D/E	A/B	B/C	D/DD	DD	B/C	D/DD
BUST	30"-32"	32"-34"	34"-36"	36"-38"	38"-40"	32"-34"	36"-38"	40"-48"	48"-54"	32"-38"	40"-54"
WAIST	23"-25"	25"-27"	27"-29"	29"-31"	31"-33"	24"-26"	28"-32"	36"-40"	40"-44"	24"-22"	36"-44"
HIP	32"-34"	34"-36"	36"-38"	38"-40"	40"-42"	34"-36"	38"-40"	42"-48"	50"-56"	36"-40"	42"-56"
CORSET		32"-34"	34"-36"	36"-38"	38"-40"			40"-42"	42"-44"		
INSEAM	34"	34 1/2"	35"	35 1/2"	36"	35"	35 1/2"	36 1/2"	37"	35"	36 1/2"
RISE	6 1/2"-7"	7"-7 1/2"	7 1/2"-8"	8"-8 1/2"	8 1/2"-9"	7 1/2"-8"	8"-8 1/2"	9"-9 1/2"	9 1/2"-10"	7 1/2"-8"	9"-9 1/2"
WEIGHT	85lbs-90lbs	90lbs-120lbs	120lbs-140lbs	140lbs-160lbs	160lbs-180lbs	90lbs-130lbs	130lbs-160lbs	165lbs-225lbs	225lbs-275lbs	90lbs-160lbs	165lbs-275lbs

Women's INTERNATIONAL Size Chart

UK	REGULAR SIZES						PLUS SIZES		ONE SIZE		
	XS	S	M	L	XL	S/M	M/L	1X/2X	3X/4X	O/S	O/S QUEEN
UK	0-2	6-8	10-12	14-16	16-18	6-10	12-16	18-20	22-24	6-16	18-20
FRANCE/SPAIN	32-34	34-36	38-40	42-44	44-46	34-38	40-44	46-48	50-52	33-44	46-52
GERMANY	30-32	32-34	36-38	40-42	42-44	32-36	38-42	44-46	48-50	32-42	44-50
ITALY	34-36	38-40	42-44	46-48	48-50	38-42	44-48	50-52	54-56	38-48	50-56
JAPAN	5	5-7	7-9	9-11	11-13	5-9	9-13	13-15	15-17	7-13	13-17
CUP	A	A/B	B-C	C/D	D/E	A/B	B/C	D/DD	DD	B/C	D/DD
BUST	75cm-81cm	81cm-86cm	86cm-91cm	91cm-97cm	96.5cm-101.5cm	81cm-86cm	91cm-97cm	90cm-108cm	108cm-122cm	72cm-81cm	90cm-122cm
WAIST	56cm-61cm	61cm-66cm	66cm-71cm	71cm-81cm	78.7cm-83.8cm	61cm-66cm	71cm-81cm	81cm-102cm	102cm-112cm	61cm-81cm	97cm-112cm
HIP	81cm-91cm	86cm-91cm	91cm-97cm	97cm-102cm	101.6cm-106.6cm	86cm-91cm	97cm-102cm	106cm-122cm	127cm-142cm	86cm-97cm	107cm-142cm
INSEAM	86cm	88cm	89cm	90cm	91.4cm	89cm	90cm	93cm	94cm	89cm	93cm
RISE	16cm-18cm	18cm-19cm	19cm-20cm	20cm-22cm	21.5cm-22.8cm	19cm-20cm	20cm-22cm	23cm-24cm	24cm-25cm	19cm-20cm	23cm-24cm
WEIGHT	37kg-40kg	40kg-55kg	55kg-65kg	65kg-75kg	75kg-85kg	45kg-60kg	60kg-75kg	75kg-105kg	105kg-125kg	40kg-70kg	75kg-115kg

Actual Packaging Graphics On Some Styles May Vary

Dreamgirl[®]



COPYRIGHT © MMXVI

The images and graphics in this catalogue [or CD] are the copyright-protected work of DG Brands. Any use or reproduction without the express written consent of DG Brands is strictly prohibited. Violators will be prosecuted to the fullest extent of the law.