



Dreamgirl[®]

販売店 **Lady Cat**

by Cat Fish Club

<http://www.ladycat.com>

service@ladycat.com

TEL 047-397-7377

2016/2017 ENCORE REMIX

®

Dreamgirl



STYLES 9818, 10129, 10204



Stretch lace body skimming chemise
with edge lace trim. Matching
g-string included.



STYLE 9818

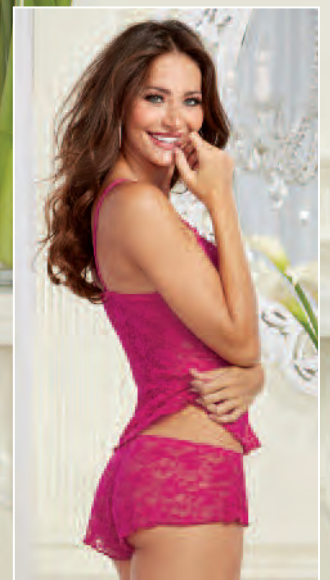
S, M, L, XL

BLACK, CORAL, MAGENTA

1X/2X, 3X/4X



Stretch lace with spandex camisole with unlined triangle cups, edge lace neckline and straps; matching tap pant with elastic waist and lettuce edge hem included.



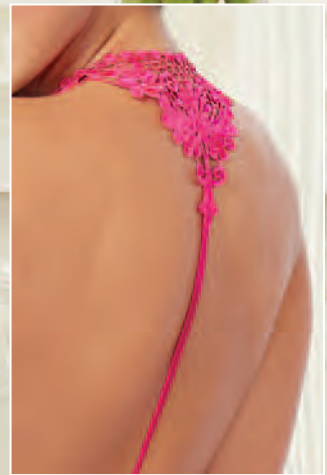
STYLE 10204

S, M, L, XL



BLACK, MAGENTA

Soft cotton and spandex jersey halter chemise with plunging neckline, sexy low cut armhole and open back with embroidered venice lace trim and T-back strap details.



STYLE 10129

S, M, L, XL



FUCHSIA

Soft cotton and spandex jersey halter midi length gown with plunging neckline, sexy low cut armhole and open back with embroidered venice lace trim and T-back strap details.



STYLE 10130
TURQUOISE

S, M, L, XL



Soft cotton and spandex jersey tunic with stretch lace neckline, ¾ length sleeves and shirt tail hem; tunic can be worn on or off the shoulders.



STYLE 10121

S, M, L, XL

RASPBERRY

1X/2X, 3X/4X



Soft cotton and spandex jersey PJ set; top has a stretch lace neckline and $\frac{3}{4}$ length sleeves and bottom has a sexy low rise with stretch lace waistband and slight bootleg cut; top can be worn on or off the shoulders.



STYLE 10120

S, M, L, XL

RASPBERRY





Soft cotton and spandex jersey chemise with scalloped lace neckline inset, adjustable criss-cross straps and low open back with lace inset detail.



STYLE 9703

S, M, L, XL



BLACK, ORCHID/BLACK, RED/BLACK

1X/2X, 3X/4X



Soft cotton and spandex jersey camisole with scalloped lace neckline inset, adjustable shoulder straps and matching drawstring PJ shorts with side seam lace inset detail.



STYLE 10209
BLACK

S, M, L, XL



The Flirtation



Retro inspired lace babydoll with ruffled scalloped lace neckline, scalloped lace hem and front ribbon tie closures; matching g-string included. Babydoll can be worn on or off the shoulders.



STYLE 10205
LIPSTICK RED

S, M, L, XL



Stretch lace with spandex camisole with unlined triangle cups, edge lace neckline and straps; matching tap pant with elastic waist and lettuce edge hem included.



STYLE 10204

S, M, L, XL

BLACK, MAGENTA





Pleated chiffon flyaway back babydoll with delicate eyelash lace tall triangular cups, satin under bust ribbon and bow, adjustable shoulder straps and hook & eye back closure. Matching open back panty with satin ribbon tie closure included.



STYLE 9713

S, M, L, XL

BLACK, HOT PINK, PEARL WHITE 1X/2X, 3X/4X



The Desire



STYLE 10113



Silky satin French-cut romper with scalloped lace trim on neckline and legs, adjustable straps, button keyhole back, and elastic waist with attached tie front belt.



STYLE 10113
MIDNIGHT

S, M, L, XL



Silky satin charmeuse
toga chemise with
contrast lace detail,
adjustable shoulder
straps and open sides
with satin ties.



STYLE 9719

S, M, L, XL



LIPSTICK RED, MIDNIGHT, RASPBERRY 1X/2X, 3X/4X



Satin charmeuse chemise with lace triangle bra cups and front inset, scalloped lace trim, satin bows and ultra low back with criss-cross adjustable straps. Matching thong included.



STYLE 8718

S, M, L, XL

LAVENDER, MIDNIGHT, WHITE 1X/2X, 3X/4X



Stretch lace long sleeved tunic with scalloped lace edge trim, bateau neckline and open back with removable/adjustable criss-cross straps. (G-string not included)



STYLE 10101

S, M, L, XL

MIDNIGHT

1X/2X, 3X/4X



Chiffon button-front long sleeved sleep shirt with satin detail on the collar, cuffs and pockets. Matching chiffon short with satin cuff and elastic waist included.

STYLE 10122

S, M, L, XL

MIDNIGHT



Chiffon button-front long sleeved sleep shirt with shirt tail hem and satin collar, cuffs and pockets details. (G-string not included)

STYLE 10139

S, M, L, XL

MIDNIGHT



Satin charmeuse bias cut kimono robe with adjustable tie front detail, high-low hem and matching g-string.



STYLE 9673

S, M, L, XL

PLUM



Stretch lace mid-thigh length robe with charmeuse belt and matching charmeuse flirty babydoll with front ruching detail and adjustable criss-cross straps.



STYLE 9105

S, M, L, XL

PLUM

1X/2X, 3X/4X



Lace galloon and allover lace high neck chemise with plunging neckline, sexy low back with beautiful lace detail and adjustable straps. Matching thong included.



STYLE 10118

S, M, L, XL

19 PLUM



Lace galloon high neck teddy with plunging neckline, sexy open back with beautiful lace detail and adjustable straps.



STYLE 10119

S, M, L, XL

PLUM





Scalloped stretch lace galloon and stretch mesh with spandex halter babydoll with tall triangle cups, adjustable neck ties and matching scalloped lace tanga panty.



Scalloped stretch lace galloon and stretch mesh with spandex halter chemise with triangle cups, lace hem, criss-cross low back detail and adjustable neck ties. Matching stretch mesh thong included.



STYLE 9669

S, M, L, XL

RASPBERRY

1X/2X, 3X/4X



STYLE 9668

S, M, L, XL

RASPBERRY



Silky satin charmeuse camisole with contrast lace detail, adjustable shoulder straps and matching fluttery tap pant with elastic waist.



Silky satin charmeuse toga chemise with contrast lace detail, adjustable shoulder straps and open sides with satin ties.

STYLE 9697

S, M, L, XL

LIPSTICK RED, RASPBERRY



STYLE 9719

S, M, L, XL

LIPSTICK RED, MIDNIGHT, RASPBERRY

1X/2X, 3X/4X



Stretch lace body
skimming chemise
with edge lace trim.
Matching g-string
included.



STYLE 9818

S, M, L, XL

BLACK, CORAL, MAGENTA

1X/2X, 3X/4X



Satin charmeuse bias
cut chemise with sheer
scalloped embroidery
cup and bodice detail,
adjustable criss-cross
straps and low back.



STYLE 9662

S, M, L, XL

BLACK, MAGENTA

1X/2X, 3X/4X



Stretch lace with
spandex underwire
bustier with molded
push-up cups, ruffle
details, princess seam
boning, adjustable
shoulder straps and
hook & eye back
closure. Matching
ruffle back cheeky
panty included.



Push-Up Cup

STYLE 9103

S, M, L, XL

ORCHID/BLACK

1X/2X, 3X/4X





Soft cotton and spandex jersey camisole with contrast scalloped lace neckline inset, adjustable shoulder straps and matching drawstring pant with side seam lace inset detail.



Soft cotton and spandex jersey chemise with contrast scalloped lace neckline inset, adjustable criss-cross straps and low open back with lace inset detail.



STYLE 9704

S, M, L, XL



ORCHID/BLACK, RED/BLACK

STYLE 9703

BLACK, ORCHID/BLACK,
RED/BLACK

S, M, L, XL

1X/2X, 3X/4X



Satin charmeuse bias cut chemise with contrast eyelash lace overlay triangle cup detail, adjustable shoulder straps, and open back with adjustable large satin bow closure detail.



Satin charmeuse camisole with contrast eyelash lace overlay triangle cup detail, adjustable shoulder straps, and adjustable large satin bow back closure detail. Matching satin front and lace back cheeky short included.



STYLE 9676

S, M, L, XL



ORCHID/PLUM 1X/2X, 3X/4X

STYLE 9677

S, M, L, XL



ORCHID/PLUM

Silky satin charmeuse toga chemise with scalloped lace overlay, unlined scalloped lace triangle cups, open sides with satin ties and adjustable shoulder straps. Matching g-string included.



STYLE 9682 S, M, L, XL
BLACK/WHITE



Silky satin charmeuse camisole with lace overlay, unlined scalloped lace triangle cups, criss-cross adjustable back straps and side vents. Matching satin tap pant with elastic waist and lace trim on hem included.



STYLE 9683 S, M, L, XL
BLACK/WHITE 1X/2X, 3X/4X



Scalloped stretch lace and stretch mesh with spandex garter slip with unlined lace underwire cups, lace inset details, adjustable shoulder straps, adjustable/removable garter straps and hook & eye back closure. Matching g-string included. Shown with style 0005 thigh highs, sold separately.



STYLE 9684 S, M, L, XL



Scalloped stretch lace and stretch mesh with spandex teddy with unlined scalloped lace underwire cups, lace inset details, adjustable shoulder straps, snap crotch and open back with hook & eye back closure.



STYLE 9685 S, M, L, XL



IVORY/BLACK



Silky satin charmeuse bias cut A-line chemise with scalloped lace side panels and adjustable shoulder straps with pearl bow accents.

STYLE 10082

S, M, L, XL



VINTAGE PINK

1X/2X, 3X/4X



Silky satin charmeuse bias cut camisole with scalloped lace side panels, adjustable shoulder straps with pearl bow accents and matching satin and lace tap pant.

STYLE 10083

S, M, L, XL



VINTAGE PINK



Delicate all-over lace empire waist tie-front robe with elegant eyelash lace scalloped neckline, cap sleeves and hem; matching thong included.

STYLE 10106

S, M, L, XL



BLACK



Delicate eyelash lace and chiffon underwire flyaway back babydoll with lined scalloped lace cups, scalloped lace hem, adjustable straps, hook & eye back closure and bow detail; matching lace thong with pretty bow back detail included.

STYLE 10105

S, M, L, XL



VINTAGE PINK/BLACK 1X/2X, 3X/4X

Point d'esprit stretch mesh underwire apron babydoll with stretch lace and satin lining details and ruffled hem. Babydoll has adjustable shoulder straps, hook & eye back closure, removable/adjustable garter straps and adjustable tie back skirt closure. Matching g-string included. Shown with style 0007 thigh highs, sold separately.



STYLE 10089 S, M, L, XL
AQUA/BLACK 1X/2X, 3X/4X



Point d'esprit stretch mesh underwire garter slip with stretch lace and satin lining details, ruffled hem with adjustable side shirring accent, adjustable shoulder straps, hook & eye closure with open back detail and adjustable/removable garter straps. Shown with style 0005 thigh highs, sold separately.



STYLE 10090 S, M, L, XL
AQUA/BLACK



Chiffon bias cut toga with exquisite two-toned embroidered scalloped triangular cups and hem detail, adjustable straps and side ties; matching g-string included.



STYLE 10108 S, M, L, XL
25 AQUA 1X/2X, 3X/4X



Chiffon bias cut camisole with exquisite two-toned embroidered scalloped triangular cups, front tie and adjustable straps; matching bias cut flutter tap pant with embroidered side panels included.



STYLE 10107 S, M, L, XL
AQUA



Stretch lace 3 piece garter set with contrast seaming details. Underwire molded push-up cup bra with adjustable shoulder straps and hook & eye back closure. Versatile high-waisted garter belt can also be worn low on the hips as a garter skirt and features removable/adjustable garter straps and hook & eye back closure. Matching lace panty included. Shown with style 0005 thigh highs, sold separately.

Push-Up Cup

STYLE 10088 S, M, L, XL
LAVENDER/BLACK



Stretch lace garter slip with underwire molded push-up cups, contrast seaming details, adjustable shoulder straps, hook & eye closure with open back detail and removable/adjustable garter straps. Shown with style 0005 thigh highs, sold separately.

Push-Up Cup

STYLE 10087 S, M, L, XL
LAVENDER/BLACK 1X/2X, 3X/4X



Satin charmeuse chemise with lace triangle bra cups and front inset, scalloped lace trim, satin bows and ultra low back with criss-cross adjustable straps. Matching thong included.

STYLE 8718 S, M, L, XL
LAVENDER, MIDNIGHT, WHITE



Silky satin charmeuse bias cut camisole with scalloped lace neckline, adjustable shoulder straps and matching lace tap pant with side slits and bow details.

STYLE 10086 S, M, L, XL
LAVENDER





Stretch mesh with spandex underwire apron babydoll with scalloped lace trim, ruffled hem, adjustable shoulder straps, tie back ribbon waistband, attached/adjustable garters and hook & eye back closure. Matching stretch mesh thong included. Shown with style 0081 thigh highs, sold separately.

Stretch mesh with spandex and drapery fringe halter teddy with strappy back detail, snap crotch and back neck tie closure.



STYLE 9797

S, M, L, XL



CORAL/HOT PINK

STYLE 8603

S, M, L, XL



BLACK, CORAL, PLUM, RED

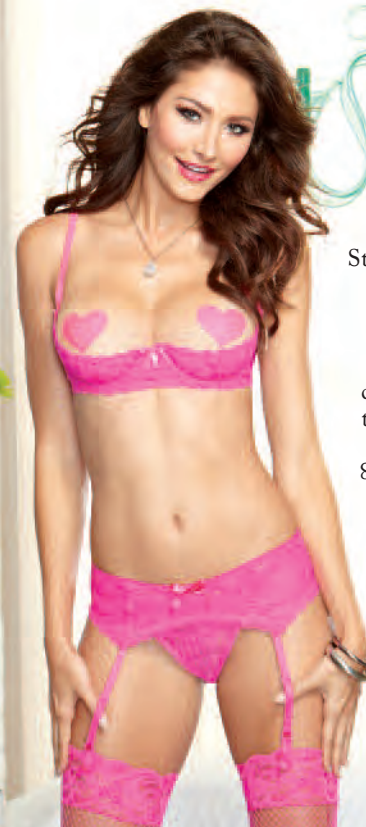
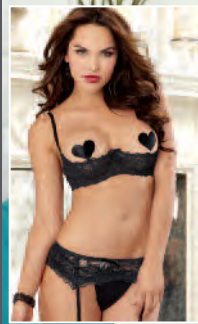
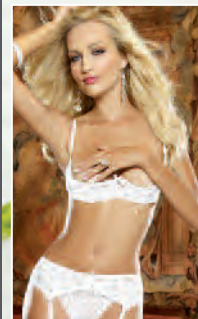


Pleated chiffon flyaway back babydoll with delicate eyelash lace tall triangular cups, satin under bust ribbon and bow, adjustable shoulder straps and hook & eye back closure. Matching open back panty with satin ribbon tie closure included.



STYLE 9713
BLACK, HOT PINK,
PEARL WHITE

S, M, L, XL
1X/2X, 3X/4X



Stretch lace open cup underwire shelf bra with adjustable shoulder straps and hook & eye back closure. (Pasties and thong not included) Shown with styles 8735 garter belt and 0001N thigh highs, sold separately.

STYLE 9386

32, 34, 36, 38

BLACK, HOT PINK, WHITE



Dot jacquard stretch mesh with spandex underwire garter slip with unlined demi bra, ruched side panels, ruffle trim and large satin bow details. Garter slip has adjustable shoulder straps, hook & eye back closure and removable ruffled garter straps. Matching g-string included. Shown with style 0081 thigh highs, sold separately.



STYLE 9803

S, M, L, XL

HOT PINK/CORAL

1X/2X, 3X/4X



Dreamgirl

P I N K d i a m o n d





Dreamgirl

One Size Fits Most Shocking Pink Style 10401



STYLE 10401



Stretch lace and stretch mesh with spandex halter chemise with neckline keyhole detail, adjustable halter ties and matching mesh g-string.

STYLE 10401

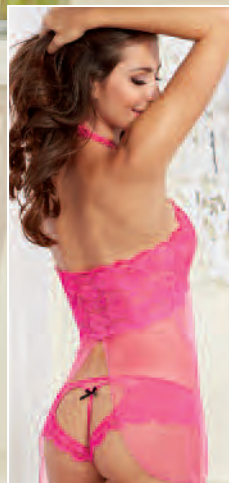
O/S



SHOCKING PINK



Stretch lace and mesh halter babydoll with flyaway back detail, adjustable halter ties and matching lace panty with large heart cut-out detail on back.



STYLE 10402

O/S



SHOCKING PINK

Stretch mesh with spandex garter slip with scalloped lace triangular halter cups and under bust detail, open back with ribbon lace-up skirt and back tie closures. Matching thong included. Shown with style 0001 thigh highs, sold separately.



Best Seller Added In Plus Size

STYLE 9724 O/S
MAGENTA, TURQUOISE O/S QUEEN



Stretch galloon lace and stretch mesh off the shoulder babydoll with adorable cap sleeves and ruched front with bow; matching g-string included.



STYLE 10400 O/S
TURQUOISE O/S QUEEN





Stretch mesh 3/4 length sleeve off the shoulder tunic with stretch lace trim. Matching g-string included.

STYLE 8084 O/S
TURQUOISE/BLACK



Stretch lace with spandex bralette with shirring at center front and garter skirt with mesh ruffle and removable garters. Matching thong included. Bralette can be worn on or off the shoulders. Shown with style 0005 thigh highs, sold separately.

STYLE 8093 O/S
BLACK



Stretch lace and stretch mesh with spandex open back chemise with adjustable criss-cross shoulder straps and elastic strappy back detail. Matching thong included.



STYLE 8665 O/S



Floral lace halter apron babydoll with tie back closures, attached front garters and matching lace panty with large heart cut-out back detail. Matching feather tickler included. Shown with style 0081 thigh highs, sold separately.



STYLE 9808 O/S
TURQUOISE/HOT PINK O/S QUEEN



Feather Tickler Included



Stretch mesh chemise with lace strap neckline and wide adjustable back lace-up detail. Matching g-string included.

STYLE 8089 O/S
HOT PINK/BLACK



Strapless vest-look knit top with crest patch, decorative gold buttons and back tie closure; pleated plaid skirt with decorative button tab detail. Matching thong and necktie included.

STYLE 8680 O/S
"TEACHER'S PET":
HOT PINK, NAVY



Stretch lace garter belt with scalloped hem and hook & eye back closure. (Thong not included) Shown with style 0001N thigh highs, sold separately.

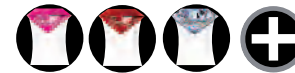


STYLE 8735 O/S
BLACK, HOT PINK,
RED, WHITE O/S QUEEN



Halter stretch lace teddy with plunging neckline, adjustable halter ties and large heart cut-out detail on back.

STYLE 8694 O/S
BLACK, IRIS,
RED, WHITE O/S QUEEN



Seamless lace tunic with revealing criss-cross details and 3/4 length sleeves. (G-string not included)



STYLE 10404

O/S



PLUM

Stretch lace halter chemise with strappy elastic and plunging low back details, adjustable halter ties and matching lace g-string.



STYLE 10143

O/S



PLUM

Stretch mesh and stretch lace teddy with strappy triangle cup design, satin bows, adjustable criss-cross back straps and lace thong back.



STYLE 9723 O/S
PLUM/BLACK



Stretch mesh halter babydoll with strappy embroidered venice lace trim cups, ribbon accents and adjustable tie back closures. Matching mesh thong and lace glovelettes with ribbon tie restraint included.



Wrist Restraints Included

STYLE 10152 O/S
PLUM/BLACK



Stretch lace halter teddy with plunging neckline, ruffle trim and thong back. Teddy has wrap around design with adjustable front satin ribbon waist tie and adjustable back tie closures. Matching wrist restraints included.



Wrist Restraints Included

STYLE 9720 O/S
BLACK O/S QUEEN



Scalloped eyelash pattern lace halter apron babydoll with ruffled organza trim, tie back closures, attached elastic garter straps and matching heart cut-out panty. Shown with style 0005 thigh highs, sold separately.



STYLE 9725 O/S
BLACK, WHITE O/S QUEEN





Seamless lace knee length chemise with adjustable lace-up plunging neckline detail and adjustable halter ties. (G-string not included)



Seamless fishnet halter chemise with criss-cross front and stretch lace hem details. Includes matching fishnet and lace glove restraints with ribbon tie. (G-string not included)

Glove Restraints Included

STYLE 10146

O/S

BLACK

O/S QUEEN



STYLE 10403

O/S

BLACK

O/S QUEEN





Leopard printed stretch lace trim open cup halter bra top with elastic tie back closures and matching open crotch thong. Includes matching leopard printed stretch lace halter wrist restraint chain set with hook & eye back closure. Restraint set can be worn in the front or the back.



Open Crotch
Wrist Restraints Included

STYLE 10149 O/S
LEOPARD



Leopard printed stretch mesh chemise with lace strap neckline and wide adjustable back lace-up detail. (Thong not included)



STYLE 10148 O/S
LEOPARD O/S QUEEN



Semi sheer hosiery mesh 3/4 length sleeved off the shoulder tunic, with leopard printed stretch lace trim detail. (G-string not included)

STYLE 9814 O/S
BLACK/LEOPARD



Stretch mesh with spandex garter slip with scalloped lace triangular halter cups and under bust detail, open back with ribbon lace-up skirt and back tie closures. Matching thong included. Shown with style 0001 thigh highs, sold separately.



STYLE 9724

O/S



39 MAGENTA, TURQUOISE O/S QUEEN

Allover stretch lace high neck teddy with sexy low back, scalloped lace trim, velvet elastic criss-cross back straps, back neck closure and snap crotch closure.



STYLE 10114

O/S



MAGENTA

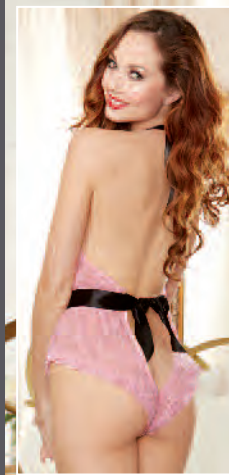
Stretch mesh halter babydoll with contrast lace detail, ribbon accent and adjustable tie back closures. Matching scalloped lace g-string included.



STYLE 9732 O/S
ORCHID/BLACK, O/S QUEEN
LIPSTICK RED/BLACK



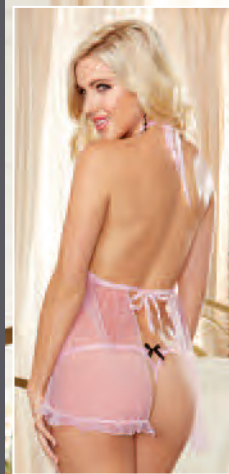
Stretch lace halter romper with scalloped lace edge trim, ribbon accent and open back detail with adjustable tie closures.



STYLE 10153 O/S
PIN-UP PINK



Mesh flyaway babydoll with scalloped lace strappy triangular cups, ruffled hem, tie closures in back and contrast bows. Fancy lace strappy thong included.



STYLE 10142 O/S
PIN-UP PINK O/S QUEEN



NIGHT OUT

dress collection



STYLE 9752



One Size Fits Most

White

Style 9752

Stretch jersey full length unlined halter dress with open sides and adjustable lace-up ties.



GLOWS IN BLACK LIGHT

STYLE 9752

O/S



BLACK, FLAMINGO PINK, WHITE

Stretch jersey mini length fully ruched halter dress with silver hardware, sexy cut-out details, and back neck tie.



GLOWS IN BLACK LIGHT

STYLE 10189

S, M, L



FLAMINGO PINK

Stretch jersey asymmetrical
ruched bandeau dress with
diagonal functional front
zipper detail.



Stretch jersey with gold
fog foil overlay sexy knee
length dress with plunging
neckline, ultra low cut
open back with adjustable
criss-cross lacing and
small vent at center
back.



STYLE 10190
BLACK

S, M, L



STYLE 10201
BLACK/GOLD

S, M, L



Dreamgirl
PACKAGED
p a n t i e s



Panty three pack. Stretch mesh with spandex cheezy panty with stretch lace trim and day of the week embroidery; Frisky Friday, Steamy Saturday, Sexy Sunday.

Stretch mesh with spandex and stretch lace open back heart panty.



New Flirty Sayings
Weekender Panty 3-Pack

STYLE 1425
 ASSORTED 1
 (BLACK, HOT PINK, TURQUOISE) 1X/2X, 3X/4X

S, M, L, XL



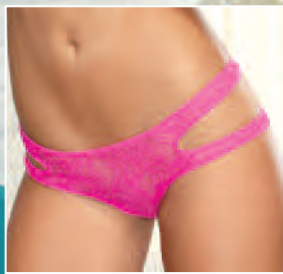
STYLE 1377
 HOT PINK/BLACK,
 LIME/BLACK, RED/BLACK 1X/2X, 3X/4X

S, M, L, XL



EXCLUDING
 LIME/BLACK
 46

Swirl pattern stretch mesh strappy panty with criss-cross cheeky back design.



STYLE 1394

S/M, M/L

BLACK, HOT PINK



Microfiber cheeky panty with cross-dye lace back and satin bow trim.



Stretch lace band tanga panty with criss-cross strappy waistband detail.



STYLE 1412

S/M, M/L

BLACK



STYLE 1380

S, M, L, XL

BLACK/GOLD, IRIS/BLACK,
PEARL WHITE, RED/BLACK



Scalloped cross-dye lace and stretch mesh panty with elastic strappy back detail.



STYLE 1424 S, M, L, XL
BLACK



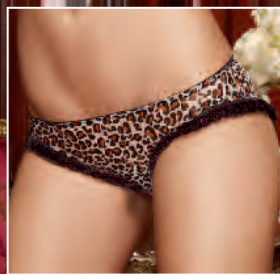
Cross-dye lace and microfiber thong.



STYLE 1391 S, M, L, XL
BLACK/GOLD 1X/2X, 3X/4X



Leopard print stretch mesh with spandex open heart back cheeky panty with stretch lace ruffle trim.



STYLE 1393 S, M, L, XL
LEOPARD 1X/2X, 3X/4X





Dreamgirl
HOSIERY
black diamond



Fishnet suspender tank bodystocking. (G-string not included)



Sheer suspender tank bodystocking. (G-string not included)

STYLE 0242

O/S



BLACK

STYLE 0031

O/S



BLACK

Sheer halter garter dress with plunging neckline, stretch lace trim, criss-cross elastic details, open back and attached matching thigh high stockings. (G-string not included)



STYLE 0236

O/S



51

BLACK



Fishnet bodystocking with knitted lace teddy design, adjustable halter ties, keyhole neckline, open crotch and seam back, lace top thigh high detail. (G-string not included)

STYLE 0244

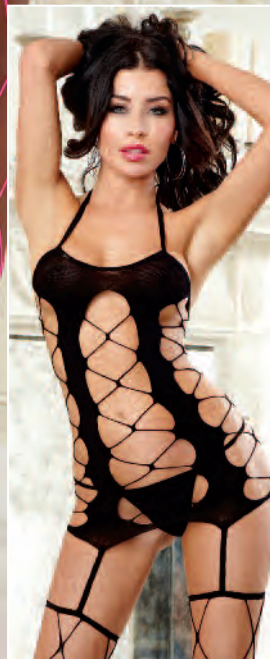
O/S



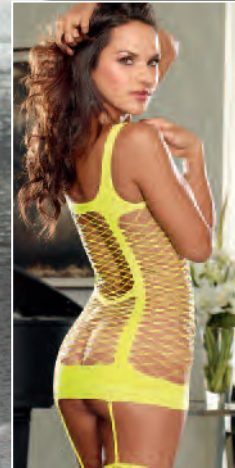
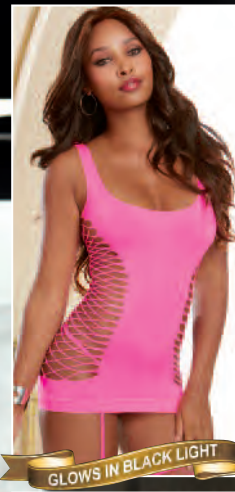
BLACK

Open Crotch

Fence net garter dress with opaque cup and style line details, adjustable elastic halter ties, attached garters and fence net thigh high stockings. (G-string not included)



Opaque and fence net garter dress with attached thigh high stockings. (Thong not included)



STYLE 0199
BLACK, NEON PINK

O/S



STYLE 0102
BLACK, LIME,
NEON PINK

O/S

O/S QUEEN



BLACK
ONLY



Sheer thigh high stockings with back seam to calf, bow detail and stay up silicone lace top. (Thong not included)

GLOWS IN BLACK LIGHT

STYLE 0081

O/S

BLACK, HOT PINK, WHITE



Sheer thigh high stockings with stay up silicone lace top. (Thong not included)

GLOWS IN BLACK LIGHT

STYLE 0005N

O/S

NEON PINK

O/S QUEEN



Stretch lace halter garter dress with ruffled lace accents, faux lace-up front detail, adjustable neck ties, attached garters and thigh high stockings. (Thong not included)

STYLE 0187

O/S

BLACK/FUCHSIA, IRIS/BLACK





Fishnet thigh high stockings with back seam and stay up silicone lace top. (Thong not included)



GLOWS IN BLACK LIGHT

STYLE 0001N O/S
HOT PINK O/S QUEEN



Fishnet thigh high stockings with back seam and stay up silicone lace top. Shown with style 1376 thong, sold separately.



STYLE 0001 O/S
BLACK, NUDE, WHITE O/S QUEEN



Sheer thigh high stockings with stay up silicone lace top. Shown with style 1376 thong, sold separately.



STYLE 0005 O/S
BLACK, NUDE, RED, WHITE O/S QUEEN



Sheer thigh high stockings with back seam. (G-string not included) Shown with style 9382 garter belt, sold separately.



STYLE 0007 O/S
BLACK, NUDE, RED, WHITE O/S QUEEN



Dreamgirl

PLUS

collection



STYLE 9713X

Stretch lace body
skimming chemise with
edge lace trim.
Matching g-string
included.

Dot jacquard stretch mesh with
spandex underwire garter slip
with unlined demi bra, ruffled
side panels, ruffle trim and
large satin bow details. Garter
slip has adjustable shoulder
straps, hook & eye back
closure and removable
ruffled garter straps.
Matching g-string
included. Shown with
style 0001NX thigh
highs, sold separately.



STYLE 9818X

S, M, L, XL

BLACK, CORAL, MAGENTA 1X/2X, 3X/4X



STYLE 9803X

S, M, L, XL

HOT PINK/CORAL 1X/2X, 3X/4X



Scalloped stretch lace galloon and stretch mesh with spandex halter babydoll with tall triangle cups, adjustable neck ties and matching scalloped lace tanga panty.



STYLE 9669X S, M, L, XL

RASPBERRY 1X/2X, 3X/4X



Soft cotton and spandex jersey tunic with stretch lace neckline, ¾ length sleeves and shirt tail hem; tunic can be worn on or off the shoulders.



STYLE 10121X S, M, L, XL

RASPBERRY 1X/2X, 3X/4X



Satin charmeuse bias cut chemise with sheer scalloped embroidery cup and bodice detail, adjustable criss-cross straps and low back.



STYLE 9662X S, M, L, XL

BLACK, MAGENTA 1X/2X, 3X/4X





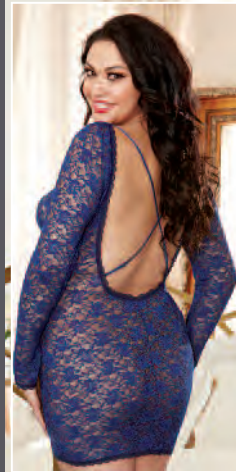
Silky satin charmeuse toga chemise with contrast lace detail, adjustable shoulder straps and open sides with satin ties.



STYLE 9719X S, M, L, XL
LIPSTICK RED, MIDNIGHT, RASPBERRY 1X/2X, 3X/4X



Stretch lace long sleeved tunic with scalloped lace edge trim, bateau neckline and open back with removable/adjustable criss-cross straps. (G-string not included)



STYLE 10101X S, M, L, XL
MIDNIGHT 1X/2X, 3X/4X



Satin charmeuse chemise with lace triangle bra cups and front inset, scalloped lace trim, satin bows and ultra low back with criss-cross adjustable straps. Matching thong included.



STYLE 8718X S, M, L, XL
LAVENDER, MIDNIGHT, WHITE 1X/2X, 3X/4X



Soft cotton and spandex jersey chemise with scalloped lace neckline inset, adjustable criss-cross straps and low open back with lace inset detail.

Pleated chiffon flyaway back babydoll with delicate eyelash lace tall triangular cups, satin under bust ribbon and bow, adjustable shoulder straps and hook & eye back closure. Matching open back panty with satin ribbon tie closure included.



STYLE 9703X
BLACK, ORCHID/BLACK,
59 RED/BLACK

S, M, L, XL
1X/2X, 3X/4X



STYLE 9713X
BLACK, HOT PINK,
PEARL WHITE

S, M, L, XL
1X/2X, 3X/4X





Stretch lace mid-length robe with charmeuse belt and matching charmeuse flirty babydoll with front ruching detail and adjustable criss-cross straps.



STYLE 9105X S, M, L, XL
 PLUM 1X/2X, 3X/4X



Stretch lace with spandex underwire bustier with molded cups, ruffle details, princess seam boning, adjustable shoulder straps and hook & eye back closure. Matching ruffle back cheeky panty included.



STYLE 9103X S, M, L, XL
 ORCHID/BLACK 1X/2X, 3X/4X



Satin charmeuse bias cut chemise with contrast eyelash lace overlay triangle cup detail, adjustable shoulder straps, and open back with adjustable large satin bow closure detail.



STYLE 9676X S, M, L, XL
 ORCHID/PLUM 1X/2X, 3X/4X





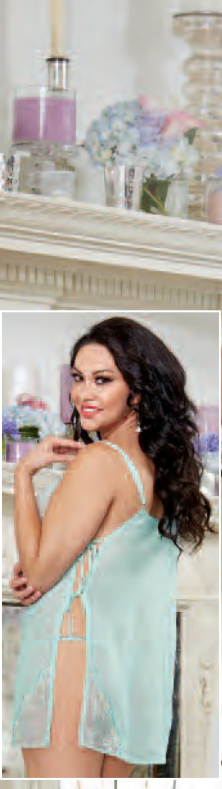
Satin charmeuse chemise with lace triangle bra cups and front inset, scalloped lace trim, satin bows and ultra low back with criss-cross adjustable straps. Matching thong included.

STYLE 8718X S, M, L, XL
LAVENDER, MIDNIGHT, WHITE 1X/2X, 3X/4X



Stretch lace garter slip with underwire molded cups, contrast seaming details, adjustable shoulder straps, hook & eye closure with open back detail and removable/adjustable garter straps. Shown with style 0005X thigh highs, sold separately.

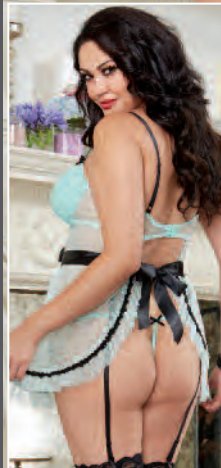
STYLE 10087X S, M, L, XL
LAVENDER/BLACK 1X/2X, 3X/4X



Chiffon bias cut toga with exquisite two-toned embroidered scalloped triangular cups and hem detail, adjustable straps, and side ties; matching g-string included.



STYLE 10108X S, M, L, XL
61 AQUA 1X/2X, 3X/4X



Point d'esprit stretch mesh underwire apron babydoll with stretch lace and satin lining details and ruffled hem. Babydoll has adjustable shoulder straps, hook & eye back closure, removable/adjustable garter straps and adjustable tie back skirt closure. Matching g-string included. Shown with style 0005X thigh highs, sold separately.

STYLE 10089X S, M, L, XL
AQUA/BLACK 1X/2X, 3X/4X



Delicate eyelash lace and chiffon underwire flyaway back babydoll with lined scalloped lace cups, scalloped lace hem, adjustable straps, hook & eye back closure and bow detail; matching lace thong with pretty bow back detail included.



Silky satin charmeuse bias cut A-line chemise with scalloped lace side panels and adjustable shoulder straps with pearl bow accents.

STYLE 10082X S, M, L, XL

VINTAGE PINK 1X/2X, 3X/4X



Silky satin camisole with lace overlay, unlined scalloped lace triangle cups, criss-cross adjustable back straps and side vents. Matching satin tap pant with elastic waist and lace trim on hem included.



STYLE 9683X S, M, L, XL

BLACK/WHITE 1X/2X, 3X/4X



STYLE 10105X S, M, L, XL

VINTAGE PINK/BLACK 1X/2X, 3X/4X



Stretch galloon lace and stretch mesh off the shoulder babydoll with adorable cap sleeves and ruched front with bow; matching g-string included.



Stretch mesh with spandex garter slip with scalloped lace triangular halter cups and under bust detail, open back with ribbon lace-up skirt and back tie closures. Matching thong included. Shown with 0001X thigh highs, sold separately.



STYLE 10400X

O/S



TURQUOISE

O/S QUEEN

STYLE 9724X

O/S



MAGENTA, TURQUOISE

O/S QUEEN

Floral lace halter apron babydoll with tie back closures, attached front garters and matching lace panty with large heart cut-out back detail. Matching feather tickler included. Shown with style 0001NX thigh highs, sold separately.



Feather Tickler Included

STYLE 9808X O/S
TURQUOISE/HOT PINK O/S QUEEN



Halter stretch lace teddy with plunging neckline, adjustable halter ties and large heart cut-out detail on back.



STYLE 8694X O/S
BLACK, IRIS, RED, WHITE O/S QUEEN





Seamless lace knee length chemise with adjustable lace-up plunging neckline detail and adjustable halter ties. (G-string not included)

STYLE 10146X

O/S



BLACK

O/S QUEEN



Seamless fishnet halter chemise with criss-cross front and stretch lace hem details. Includes matching fishnet and lace glove restraints with ribbon tie. (G-string not included)

STYLE 10403X

O/S



BLACK

O/S QUEEN

Glove Restraints Included

Scalloped eyelash pattern lace halter apron babydoll with ruffled organza trim, tie back closures, attached elastic garter straps and matching heart cut-out panty. Shown with style 0005X thigh highs, sold separately.



STYLE 9725X O/S
BLACK, WHITE O/S QUEEN



Stretch lace halter teddy with plunging neckline, ruffle trim and thong back. Teddy has wrap around design with adjustable front satin ribbon waist tie and adjustable back tie closures. Matching wrist restraints included.



Wrist Restraints Included

STYLE 9720X O/S
BLACK O/S QUEEN



Leopard printed stretch mesh chemise with lace strap neckline and wide adjustable back lace-up detail. (G-string not included)



STYLE 10148X O/S
LEOPARD O/S QUEEN



Opaque and fence net garter dress with attached thigh high stockings. (Thong not included)



STYLE 0102X S, M, L, XL
BLACK



Mesh flyaway babydoll with scalloped lace strappy triangular cups, ruffled hem, tie closures in back and contrast bows. Fancy lace strappy thong included.



STYLE 10142X

O/S



PIN-UP PINK

O/S QUEEN

Stretch mesh halter babydoll with contrast lace detail, ribbon accent and adjustable tie back closures. Matching scalloped lace g-string included.



STYLE 9732X

O/S



ORCHID/BLACK,
LIPSTICK RED/BLACK

O/S QUEEN

Dreamgirl® Now introducing . . .

**YEAR-ROUND ACCESSORIES
& COSTUMES**





Dreamgirl[®]

COPYRIGHT © MMXVI

The images and graphics in this catalogue [or CD] are the copyright-protected work of DG Brands. Any use or reproduction without the express written consent of DG Brands is strictly prohibited. Violators will be prosecuted to the fullest extent of the law.