

Dreamgirl[®]



取扱店 **ハッピーコスチューム**
by Cat Fish Club

<http://www.happycostume.com>
sales@happycostume.com
TEL 047-397-7377

2016/2017 COSTUME COLLECTION

Dreamgirl® COUPLES

Styles 9417, 9838, 10210, 10211, 10212 and 10267



(Left-Side Female Costume)
Style 10210

“Downton Doll”

S, M, L, XL

1X/2X, 3X/4X

Exquisite midnight blue embossed stretch velvet dress with jeweled neckline and sequin fringe trim. Includes jeweled headpiece with ostrich feather. (Jewelry, boa, and gloves not included)
(2 Piece Set)

(Shown With)
Style 5218
“Luna Glove”
O/S



(Center Male Costume)
Style 10211

“Party at Gatsby’s”

M, L, XL, XXL

1920’s styled tuxedo jacket with tails, white satin vest with attached faux shirt front and bow tie. Includes fringed scarf. (Pants and shirt not included)
(3 Piece Set)

(Right-Side Female Costume)
Style 10267

“Ain’t She Sweet”

S, M, L, XL

1X/2X, 3X/4X

Dazzling red sequin dress with rose trim and sequin fringe. Includes sequin headpiece with rose appliqué. (Gloves, boa, and cigarette holder not included)
(2 Piece Set)

(Shown With)
Style 5218
“Luna Glove”
O/S





Style 8190

"Gangsta"

M, L, XL, XXL

Black and white pinstripe double breasted gangster suit. Includes a dickie, machine gun screen-printed necktie, carnation pin and hat. (Shirt not included) (6 piece set)

Style 10213

"Bad-acious Gangster"

S, M, L, XL

Flattering dress with attached machine gun chain fob, pinstripe vest and skater style skirt. Includes cap, wrist cuffs, collar with attached tie and arm garter. (Cigar and money not included) (5 Piece Set)

Style 9889

“Dirty Work”

S, M, L, XL

Sleek 40’s styled halter dress with back slit and attached red tie. Includes suspenders, carnation pin, gangster hat and arm garter. (5 Piece Set)

Style 8105

“Zoot Suit Riot”

M, L, XL, XXL

Button front longer length pinstripe zoot suit with matching pants with side pocket and gold chain detail. Includes adjustable/removable elastic suspenders, matching hat and necktie with “\$” sign detail. (Shirt not included) (5 piece set)

Style 8190

“Gangsta”

M, L, XL , XXL

Black and white pinstripe double breasted gangster suit. Includes a dickie, machine gun screen printed necktie, carnation pin and hat. (Shirt not included) (6 piece set)

Style 9839

“Deadly Dames”

S, M, L, XL

1X/2X, 3X/4X

Black and white pinstripe knee-length knit dress with removable carnation and tie with dollar sign. Includes gangster hat and arm garter. (Jewelry and money not included) (4 Piece Set)



Style 9838

“Good Time Charlie”

M, L, XL, XXL

Striped three button front jacket. Includes hat and bow tie. (Shirt and pants not included) (3 Piece Set)

Burgundy velvet dress with sequin scroll design has an intricately embroidered gold neckline and hemline trim with sequin fringe. Includes gold sequin headpiece with ostrich feather. (Gloves, boa, jewelry and cigarette holder not included) (2 Piece Set)

Style 9837

“Sophisticated Lady”

S, M, L, XL

1X/2X, 3X/4X





Style 10233

"Disco Inferno (Male)"

M, L, XL, XXL

Gold metallic
holographic button
down shirt.
(Pants and necklace not
included)
(1 Piece Set)

(Shown With)
Style 9605
"Men's Disco Pant"
M, L, XL, XXL

Style 10232

"Disco Inferno (Female)"

S, M, L, XL

Gold metallic
holographic disco dress
with slit and tie belt.
(Jewelry not included)
(2 Piece Set)

Style 9859

“Yeah Baby! (Women’s)”

S, M, L, XL

1X/2X, 3X/4X

Black and white mod dress with daisy trim straps. Includes headband and boot covers. (Jewelry not included) (3 Piece Set)



Style 9909

“Yeah Baby! (Men’s)”

M, L, XL, XXL

1960’s mod black and white tunic with peace sign screen prints. (Pants not included) (1 Piece Set)

Style 9468

“Disco Dude”

M, L, XL, XXL

Black polyester button front shirt with metallic holographic disco dot. (Pants, glasses, necklace and belt not included) (1 piece set)

(Shown With)
Style 9605
“Men’s Disco Pant”
M, L, XL, XXL



Style 9469

“Disco Doll”

S, M, L, XL

Black stretch knit jumpsuit with metallic holographic disco dot. Includes stretch pink sequin belt. (2 piece set)



Style 9976

“Diner Dude”

M, L, XL, XXL

50’s styled red and white stripe apron with screen printed “Bob” nameplate. Includes bow tie, hat, and “Best Wiener in Town” pin. (Shirt, pants, pencil, tray and food not included) (4 Piece Set)

50’s styled red and white striped dress with attached petticoat, heart buttons and screen printed “Betty” nameplate. Includes hat with heart button, lace edged apron, scarf and “Hot Buns” pin. (Additional petticoat, glasses, and socks not included) (5 Piece Set)

Style 9975

“Diner Doll”

S, M, L, XL

1X/2X, 3X/4X





Style 10285

"Boat Rockin' Babe"

S, M, L, XL

Charming sailor dress with anchor buttons, sailor collar with sequin anchor appliqué. Includes belt, sailor hat, cuffs and stocking topper bows with sequin anchors. (Thigh highs and petticoat not included) (5 Piece Set)

(Shown With)
Style 4582
"Ursula Petticoat"
O/S

Style 10366
"Plain Top Fishnet
Thigh High"
O/S, O/S Queen

Style 10282
"Ship Happens"
M, L, XL, XXL

Sailor shirt with official looking combat ribbon and patches. Includes sailor hat. (2 Piece Set)

(Shown With)
Style 6379
"Men's Basic Pant"
M, L, XL, XXL

Style 10244

“Friendly Fire (Men’s)”

M, L, XL, XXL

Camouflage utility vest with bullet holders, pockets, and Army patch. Includes Army hat, bullet strip, and fingerless gloves.
(Sunglasses, shirt, and pants not included)
(4 Piece Set)

Style 10243

“Friendly Fire (Women’s)”

S, M, L, XL

Camouflage jumpsuit with fishnet sleeves and strategically placed rips. Includes Army hat, utility belt, bullet strip, 2 plastic knives, armband, arm wrap, and leg wrap.
(Sunglasses and grenade not included)
(8 Piece Set)





Style 10239

"Sergeant Dick Utopia"

M, L, XL, XXL

Beige sleeveless collared shirt with front pockets, police patch and removable tie. Includes police hat with badge, arm band, police badge pin and "Sergeant Dick Utopia" nameplate. (Sunglasses, baton, handcuffs, belt, and pants not included) (6 Piece Set)

Style 9857

"Don't Stop Cop"

S, M, L, XL

Body contouring stretch bengaline dress with authentic looking police patch and detailing. Includes "Officer Sheila B. Trouble" nameplate, badge and belt. (Sunglasses and handcuffs not included) (4 Piece Set)



Style 9443
"Special Ops (Women's)"
S, M, L, XL

Sleek and sexy black jumpsuit with buckle front detailing and Special Operations patch. Includes bullet belt. (Sunglasses, handcuffs, and walkie talkie not included) (2 piece set)

Black heavy duty vest has bullet holders, utility pockets, SWAT Police back screen print and special SWAT patch. Includes dickey with face mask and arm band with embroidered Special Ops patch. (Pants, handcuffs, baton, helmet and sunglasses not included.) (3 piece set)

Style 9444
"Special Ops (Men's)"
M, L, XL, XXL



Style 9867
"DEA Agent Phil Mypockets"
M, L, XL, XXL

Black police shirt with DEA patches. Includes DEA hat and "Agent Phil Mypockets" nameplate. (Baton, belt, glasses, handcuffs, and pants not included) (3 Piece Set)

Shiny black stretch knit romper with zip-front detailing and shiny vinyl buckles has DEA patches and attached/adjustable garters. Includes belt, leg garters, police radio/speaker, and DEA hat. (Gloves, thigh highs, and sunglasses not included) (5 Piece Set)

Style 9858
"DEA Secret Agent"
S, M, L, XL



Style 9905
 "Officer Randi Stopsign"
 S, M, L, XL

Navy blue button-front dress with shiny black vinyl trim. Includes authentic looking police patches, badge, "Officer Randi Stopsign" nameplate, belt, police radio/speaker, handcuffs, and hat with badge. (Baton not included) (7 Piece Set)

Blue button-front prison guard shirt. Includes badge, "Prison Guard Hugh B. Guilty" nameplate, belt, handcuffs and radio/speaker. (Pants not included) (6 Piece Set)

Style 9947
 "Prison Guard Hugh B. Guilty"
 M, L, XL, XXL



Style 8817
 "Dirty Cop Officer Ed Banger"
 M, L, XL, XXL

Black sleeveless collared shirt with front pockets, police patch and removable neck tie. Includes police hat with badge pin, "Officer Ed Banger" nameplate, removable police badge and arm band. (Sunglasses, handcuffs, baton and pants not included) (6 piece set)

Style 8816
 "Dirty Cop Officer Anita Bribe"
 S, M, L, XL
 1X/2X, 3X/4X

Black bengaline stretch knit dress with belt and police patches on shoulders. Costume includes police hat with badge pin, "Officer Anita Bribe" nameplate and removable police badge. (Handcuffs not included) (5 piece set)



Style 6550
 "Smokin' Hot Fireman"
 M, L, XL, XXL

Buckle front jacket with reflective tape trim detail. Includes knit tank top with "Fire Department" heat transfer and fireman hat. (Pants not included) (3 piece set)

(Shown With)
Style 6379
 "Men's Basic Pant"
 M, L, XL, XXL

Style 9887
 "Too Hot To Handle"
 S, M, L, XL

Shiny black long sleeve stretch knit dress has front zipper with hook front closure. Dress is trimmed with yellow and silver and has authentic looking fire patches. Includes adjustable belt and red fire hat. (Boot covers not included) (3 Piece Set)

Style 10248

“Sex Therapist Ken I. Help”

M/L, XL/XXL

Lab coat with “Hands on Therapy” front screen-print. Back has a “Sex Addiction” logo. Includes nameplate that says, "Sex Therapist, Dr. Ken I Help". (Shirt, glasses, and pants not included) (2 Piece Set)

(Shown With)
Style 6379
“Men’s Basic Pant”
M, L, XL, XXL

Style 10247

“Heart Throbbing Hottie”

S, M, L, XL

Nurse dress with heart buttons and screen-print. Includes nurse hat, "Nurse Ivana Hearthrob" nameplate, belt and top with heartbeat screen-print. (Thigh highs and stocking toppers not included) (5 Piece Set)

(Shown With)
Style 10366
“Plain Top Fishnet Thigh High”
O/S, O/S Queen





Style 9411
"Dr. Bud Smoker"
 M, L, XL, XXL

Men's lab coat with front and back screen print. "Dr. Bud Smoker" nameplate included.
 (Pants and shirt not included)
 (2 piece Set)

White nurse's uniform with green accents and cross screen prints. Includes nurse's hat, belt, "Nurse Anita Reefer" nameplate, and stocking topper bow pins. (Thigh highs not included)
 (5 piece Set)

Style 9435
"Nurse Anita Reefer"
 S, M, L, XL



Style 5236
"Mile High Pilot Hugh Jorgan"
 M, L, XL, XXL

Button front jacket with satin and gold trim details. Includes pilot hat, collar with necktie and removable "Mile High Pilot Hugh Jorgan" nameplate. (Pants not included)
 (4 piece set)

Black stretch knit dress with lace-up neckline, gold trim and detailing. Includes "Mile High Captain" pin, and pilot's hat.
 (3 Piece Set)

Style 9918
"Service With a Smile"
 S, M, L, XL
 1X/2X, 3X/4X



Style 10315

“World Champion (Women’s)”

S, M, L, XL

Black satin boxing robe with belt. Includes lace-up top with athletic striping and screen prints, skirt with loop to hold gloves, and boxing gloves. (5 Piece Set)

Style 10322

“World Champion (Men’s)”

M, L, XL, XXL

Black and gold satin robe with tie belt and gold metallic “World Champion” screen-print. Includes boxing gloves, shorts, and World Champion Belt. (5 Piece Set)





Style 10274

"Deadly Warrior (Men's)"

M, L, XL, XXL

Black warrior tunic
with gold trim and
embroidered crest.
Includes wrist gauntlets.
(Pants and shield not
included)
(2 Piece Set)

(Shown With)
Style 6379
"Men's Basic Pant"
M, L, XL, XXL

Style 10273

"Deadly Warrior (Women's)"

S, M, L, XL

1X/2X, 3X/4X

Gold metallic trimmed
warrior dress with
embroidered crest,
shoulder pads, and
attached hood.
Includes wrist gauntlets.
(Sword not included)
(2 Piece Set)



Style 10217

“Battle Beast”

M, L, XL, XXL

This versatile costume can be worn with or without the included shirt. Includes padded ornate collar with attached cape, faux leather warrior skirt and wrist gauntlets. (Helmet and sword not included)
(4 Piece Set)

(Shown With)
Style 10221
“Battle Beast
Helmet”
O/S



Style 10216

“Battle-licious”

S, M, L, XL

Black velvet warrior dress with silver Roman trim and underwire foam cups. Dress has an attached back cape with a large silver metallic lion head screen print. Includes wrist gauntlets. (Shield and helmet not included)
(2 Piece Set)

(Shown With)
Style 10220
“Battle-licious
Helmet”
O/S





Style 10222

“Voracious Viking (Women’s)”

S, M, L, XL

Rich brown faux leather dress with gold Celtic trim, dragon screen print and foam underwire cups with faux fur detailing. Includes faux fur capelet and wrist gauntlets. (Shield not included) (3 Piece Set)

Style 10223

“Voracious Viking (Men’s)”

M, L, XL, XXL

Tan faux leather tunic with Celtic belt, dragon screen print and trim. Includes long cape with faux fur collar. (Helmet, pants, and sword not included) (3 Piece Set)

(Shown With)
Style 6379
“Men’s Basic Pant”
M, L, XL, XXL



"Cleo" costume also pairs well with Dreamguy style 9841, "Julius Caesar"

Style 9833

"Cleo"

S, M, L, XL

Stretch black velvet asymmetrical gown with jeweled, sequined Egyptian collar and attached gold sashes. Includes belt and adjustable gold armbands. (Jewelry and headpiece not included)
(3 Piece Set)

This versatile costume can be worn with or without the included shirt. Includes Egyptian collar with attached gold cape, wrist gauntlets, Royal Nemes headpiece, Eye of Horus Necklace, and Egyptian Shendyt skirt with embellished waistband.
(5 Piece Set)

Style 9893

"King of Egypt"

M, L, XL, XXL



Style 9825

"The King Slayer (Men's)"

M, L, XL, XXL

Distressed faux black leather with metallic blue tunic and embroidered crest has an attached velvet cape. Includes wrist gauntlets. (Sword and pants not included)
(2 piece set)

Shimmering blue and black velvet dress with silver sequin detailing and embroidered crest has attached velvet cape. Includes wrist gauntlets and rhinestone headpiece.
(3 Piece Set)

Style 9824

"The King Slayer (Women's)"

S, M, L, XL

1X/2X, 3X/4X





Style 9409

“Dragon Warrior King”

M, L, XL, XXL

Brown distressed leather look tunic with contrast waistband and long brown velvet cape with faux fur collar, detachable straps and attached crossed warrior bands. (Sword, gloves, shield and pants not included)
(2 Piece Set)

Faux distressed brown leather dress with gold detailing. Includes matching brown velvet cape with faux fur collar.
(2 Piece Set)

Style 9827

“Victorious Beauty”

S, M, L, XL



Style 9968

“Knight Time (Men’s)”

M, L, XL, XXL

Silver metallic hooded medieval tunic with exaggerated shoulder armor detailing, double dragon embroidered appliqué and screen printed metal studs. Includes fingerless gloves and belt. (Sword and shield not included)
(3 Piece Set)

Style 9846

“Knight Time (Women’s)”

S, M, L, XL

Silver metallic dress with chainmail armor-look hood and mesh sleeves. Intricately embroidered two-headed dragon appliqué and black stud detailing. Includes knee pads. (Sword and gauntlets not included)
(2 Piece Set)



Style 9844

“Mighty Musketeer (Women’s)”

S, M, L, XL

Rich blue velvet dress with glitter sequin print and embroidered crest. Includes matching lined cape with large silver cross on back, and velvet Musketeer hat. (Gauntlets and jewelry not included)
(3 Piece Set)

Style 10000

“Mighty Musketeer (Men’s)”

M, L, XL, XXL

Rich blue velvet tunic with large embroidered crest and silver trim has attached satin cape with silver printed cross on the back. Includes medieval belt and Musketeer hat with ostrich feather. (Gauntlets, pants, and sword not included)
(3 Piece Set)

Style 10290
“Exquisite Cleopatra”
S, M, L, XL
1X/2X, 3X/4X

Exquisite velvet gown with Egyptian pattern has front slits and gold trim detailing. Includes Egyptian collar and belt. (Jewelry and headpiece not included)
(3 Piece Set)



(Shown With)
Style 9518
“Snake Crown”
O/S

Style 10291
“Warrior of De Nile”
M, L, XL, XXL

Tunic with gold Egyptian motif and gold trimmed shoulder tabs. Includes Egyptian belt with sword loop and wrist gauntlets. (Sword and pants not included)
(3 Piece Set)

(Shown With)
Style 6379
“Men’s Basic Pant”
M, L, XL, XXL





Style 10237

"Jesus"

M, L, XL, XXL

White satin robe with removable sash and rope belt. (3 Piece Set)

Style 10238

"Mary"

S, M, L, XL

White satin gown, rope belt and hooded cape. (3 Piece Set)

Style 10278

"It's Greek to Me"

S, M, L, XL

Heavenly asymmetrical gown with attached gold metal belt and attached chiffon sashes. Includes gold leaf headpiece. (Bracelet not included) (2 Piece Set)

Style 10256

"Zeus"

M, L, XL, XXL

This versatile costume can be worn with or without the included shirt. Includes gold satin cape, top, paneled skirt, wrist gauntlets and gold leaf headpiece. (5 Piece Set)





Style 10250

"Goddess of Egypt"

S, M, L, XL

Rich metallic gold gown with attached pleated gold cape and removable front panel has exquisite Venetian lace appliques.

Includes sequin and rhinestone headpiece. (Earrings not included) (2 Piece Set)



Style 10251

"Anubis, God of the Underworld"

M, L, XL, XXL

This versatile costume can be worn with or without the included shirt. Includes Anubis mask, Egyptian collar with attached cape, shendyt skirt and armbands.

(Weapon and gloves not included) (5 Piece Set)





Style 9875
"Goddess of Delight"
S, M, L, XL

Exquisite white chiffon dress with gold fleck print has unique high-low hemline and attached gold sashes. Includes gold leaf headpiece and armbands. (Jewelry not included)
(3 Piece Set)

White tunic with gold satin attached cape and matching trim. Gold leaf headpiece, removable belt and wrist gauntlets included.
(4 piece set)

Style 8860
"He's' a God"
M, L, XL, XXL



Style 9853
"Sea Goddess"
S, M, L, XL

Turquoise gown with shell shaped underwire foam cups, sheer peplum and sequin shell appliqué detailing. Includes armbands with trailing chiffon and removable, adjustable shoulder straps. (Headpiece not included)
(3 Piece Set)

Tunic with attached sash has gold trident detailing. Includes crown, belt, and wrist gauntlets. (Trident not included)
(4 Piece Set)

Style 9854
"Poseidon"
M, L, XL, XXL



Style 10296

"Papa Bear"

M, L, XL, XXL

Furry brown velvet tunic with attached hood with ears. Includes bear paw fingerless gloves. (Pants not included) (2 Piece Set)

Style 9895

"Goldilocks"

S, M, L, XL

1X/2X, 3X/4X

Adorable fairytale dress in black velvet with gold satin ruffles has unique sequined daisy trim along its lace-up bodice and a built-in petticoat. Attached apron has three sequined bear appliques and is framed with black ric-rac. Includes full-length hooded gold satin cape. (Hair ribbons, gloves, additional petticoat and thigh highs not included) (2 Piece Set)

(Shown With)
Style 10342
"Bow Top Stockings"
O/S, O/S Queen

Style 5218
"Luna Glove"
O/S

Style 4582
"Ursula Petticoat"
O/S



Style 10297

"Hatter Madness"

M, L, XL, XXL

Brown velvet jacket with uneven pockets and purple trim. Includes diamond print vest with polka dot buttons and attached purple dickey with large bow tie and oversized velvet hat. (Pants and wig not included)
(3 Piece Set)

(Shown With)
Style 10347
"Men's Ripped Pants"
M, L, XL, XXL

Style 10293

"Alice"

S, M, L, XL

Lovely Alice dress with layered tulle overskirt, velvet bodice and sheer sleeves. Includes apron and headband with bow. (3 Piece Set)



"Hatter Madness" costume also pairs well with Dreamgirl style 9476, "Beyond Wonderland".

Style 10298

"The Sultan"

M, L, XL, XXL

Exotic purple satin tunic with attached velvet vest is trimmed with gold tassel braid. Includes gold sash, satin harem pants and jeweled turban. (Boot covers and dagger not included)
(4 Piece Set)

Style 7572

"Ally Kazaam"

S, M, L, XL

Chiffon peasant styled top with gold foil paisley print trimmed with gold sequin band. Matching genie pants with gold sequin waistband have attached stretch shorts inside. Includes scarf and head piece. (Jewelry not included)
(4 piece set)

Style 10313

“Wild Wench”

S, M, L, XL

Flirty off the shoulder pirate wench dress with lace-up detail and jagged edge hem. Includes pirate hat and sarong with skull print. (3 Piece Set)

Style 10312

“Sea Savvy Pirate”

M, L, XL, XXL

Velvet coat with gold trim and pirate buttons. Includes pirate hat, waist sash, white ruffled dickey and eye patch. (Shirt, pants and sword not included) (5 Piece Set)

(Shown With)
Style 6379
“Men’s Basic Pant”
M, L, XL, XXL





Style 10224

"Hot on the Hunt"

S, M, L, XL

Animal print stretch
ultra suede dress with
Native American trim
and attached fringe skirt.
Includes braided
headpiece with feathers.
(Tomahawk not
included)
(2 Piece Set)

Style 10228

"Rifleman"

M, L, XL, XXL

Brown suede
Western-style fringe coat.
Includes cowboy hat.
(Shirt, bandana, and jeans
not included)
(2 Piece Set)

Style 9493

“Big Bad Wolf”

M, L, XL, XXL

Men's red and black check jagged edge tunic with faux fur hood with wolf ears. Includes fingerless gloves. (Pants not included) (2 piece Set)

Style 9477

“Little Red”

S, M, L, XL

1X/2X, 3X/4X

Beautifully detailed fairytale dress includes underwire foam cups with pleated ruffles, embroidered heart trim, and lace-trimmed apron. Includes full length hooded satin cape. (Basket, thigh highs, stocking bows, and satin gloves not included) (2 Piece Set)

(Shown With)
Style 5218
“Luna Glove”
O/S

+



Style 9474

“Fairytale Prince”

M, L, XL, XXL

Tunic with gold embroidered royal crest, gold fringed epaulets and matching belt. Includes elastic waist pants with gold trim. (3 Piece Set)

Style 9473

“Having a Ball”

S, M, L, XL

1X/2X, 3X/4X

Blue satin dress with jeweled neckline trim, high-low hemline, sheer puff sleeves and sparkly print skirt. Includes crown. (Jewelry, satin gloves and thigh highs not included) (2 piece set)

+



Style 9871

“Sea Worthy Pirate”
(Women's)

S, M, L, XL

Brown distressed leather look vest with attached peasant top and gold trim detailing. Includes black leather look pirate's hat and shiny knit capri pants with cuffs. (Earrings and sword not included) (3 Piece Set).

Style 9872

“Sea Worthy Pirate”
(Men's)

M, L, XL, XXL

Brown distressed leather look vest with gold detailing. Includes pirate's tunic top, distressed leather look head wrap, striped waist sash and belt. (Pants and sword not included) (5 Piece Set)



Style 9832

"Buck Wild"

M, L, XL, XXL

Western style black suede, fringed jacket. Includes cowboy hat, bandana, and vest. (Shirt, belt, and pants not included) (4 Piece Set)

Black and pink velvet dress with Western style metallic print, fringe detailing, off-the-shoulder sleeves, tiered ruffle skirt with lace and attached garters. Includes ostrich feather barrette. (Thigh highs and jewelry not included) (2 Piece Set)

Style 9831

"Whiskey Girl"

S, M, L, XL



Style 8197

"Chief Wansum Tail"

M, L, XL, XXL

Native American styled ultra suede fringed shirt and pants with feather headdress. (3 piece set)

Style 8196

"Reservation Royalty"

S, M, L, XL

1X/2X, 3X/4X

Ultra suede dress has Native American beaded appliqué and fringe detail. Includes a headpiece with feathers and matching beaded appliqué. (2 piece set)



Style 5877

"Pocahottie"

S, M, L, XL

1X/2X, 3X/4X

Faux suede dress with intricate beaded neckline and layered fringe hem. Includes matching beaded headpiece with feathers. (2 piece set)

Style 9189

"Chief Long Arrow"

M, L, XL, XXL

Native American styled ultra suede fringed shirt and pants with feather headdress. (3 piece set)

Style 10259

“Bloody Beautiful”

S, M, L, XL

1X/2X, 3X/4X

Exquisite gown with velvet and satin bodice has sequin appliqué and full layered satin and tulle skirt. Includes removable/adjustable vampire collar. (Earrings, necklace, and gloves not included) (2 Piece Set)

(Shown With)
Style 10369
“Bloody Beautiful
Choker”
O/S

Style 10341
“Midnight Madness
Gloves”
O/S



Style 10260

“Bloody Handsome”

M, L, XL, XXL

Black velvet coat with embossed scroll design has an attached vampire collar. Includes printed satin vest with attached shirt front with ruffled collar. (Pants not included) (2 Piece Set)



“Bloody Handsome” costume also pairs well with Dreamgirl costume style 10280, “Fly by Night Vamp”.



Style 9904

"Mr. Bones"

M, L, XL, XXL

Black velvet jacket with red tattered edges has an attached shirt front with skeleton print. Includes collapsible hat with skull and skeleton fingerless gloves. (Cigar and pants not included) (3 Piece Set)

Exquisite skeleton screen print dress has stretch bodice with attached full-layered tulle and satin skirt. Includes skeleton screen print fingerless gloves. (Hat and jewelry not included) (2 Piece Set)

Style 9903

"Ms. Bones"

S, M, L, XL



Style 8177

"Just One Bite"

M, L, XL, XXL

Black velvet vampire waistcoat with contrast satin lapels and cuffs. Front lapels have gothic embroidered satin appliqué crosses with rhinestones. Coat back has embroidered fiber optic light-up cross. Includes a white satin ruffle dickie, instructions, hidden pocket for on/off switch and batteries. (Shirt and pants not included) (2 piece set)



Style 9878

"To Die Over"

S, M, L, XL

Exquisite corset styled dress with high-low hemline, metallic mesh ruffled skirt, and sequin neckline detail. Includes detachable cape with vampire collar. (Gloves, jewelry, and pantyhose not included) (2 Piece Set)



Style 9946

"Groom of Doom"

M, L, XL, XXL

Gray tattered jacket with spider web mesh and skull buttons. Includes collapsible hat and shirt front dickey with bow tie. (Pants not included) (3 Piece Set)

Style 9945

"Bride of Doom"

S, M, L, XL

Gray tattered gown with skeletal ribcage print and full layered tulle overskirt. Roses adorn the neckline and dropped waistline. Includes tattered gray veil headband with roses, and choker with skull. (Thigh highs not included) (3 Piece Set)

Style 10271

“Hell of a Guy”

M, L, XL, XXL

Red satin cape with collar and large pentagram screen print on the back. Includes Devil mask, and red velvet vest with pentagram buttons. (Shirt, pants, and cleaver not included) (3 Piece Set)

(Shown With)

Style 10347

“Men’s Ripped Pants”

M, L, XL, XXL

Style 10270

“Kappa Killer”

S, M, L, XL

Blood splattered sorority top and pleated skirt. Includes knife. (Knee highs not included) (3 Piece Set)





Style 10302

"Horror Hotel" (Women's)

S, M, L, XL

Blood splattered hotel maid's dress with attached apron has a full satin skirt with attached petticoat. Includes headpiece, choker, and nameplate that says, "Ivana Stabalot". (Jewelry, gloves, duster, and thigh highs not included) (4 Piece Set)

(Shown With)
Style 10342
"Bow Top Stockings"
O/S, O/S Queen

Style 10304

"Horror Hotel" (Men's)

M, L, XL, XXL

Red Bellman's uniform coat and tails with gold trim. Includes blood splattered gloves, shirt front with tie, cummerbund, hat and nameplate that says "The Dreadly Hotel, Will U. Live" (Pants and cleaver not included) (6 Piece Set)

Style 9902

“Dr. Hugh B. Dead”

M, L, XL, XXL

Doctor’s white lab coat with screen printed blood splatter and medical logos. Back has bloody handprint and “Mental Ward” screen print. Includes wig, glasses and stick-on mustache. (Pants, stethoscope, and chainsaw not included) (4 Piece Set) .

Style 9901

“Working the Graveyard Shift”

S, M, L, XL

Nurse’s uniform with screen printed splattered blood and ragged sleeves and hemline. Back has bloody handprint and “Mental Ward” screen print. Includes “Mental Ward” headpiece and “Nurse Norma Lee Crazy” nameplate. (Cleaver and stockings not included) (3 Piece Set)

Style 9882

“Freak Show”

M, L, XL, XXL

Red velvet jacket with gold satin lapels and cuffs has black sequin trim. Large “Freak Show” vintage looking screen print on the back of the jacket. Includes striped satin vest with attached dickie with bow tie, and collapsible velvet hat. (Pants not included) (3 Piece Set)

Style 9881

“The Snake Charmer”

S, M, L, XL

Seductive metallic red top with gold sequin snakes, fringe and gold coin detailing. Includes side slit velvet skirt with sequin embellished waistband and snake detail, headpiece with coins, and golden prop snake. (Earrings not included) (4 Piece Set)



| | | | |
|------------------------|---|--|--------------------------|
| Style 9874 | Hooded black leather look tunic. Includes belt with loop for weapon, battle ax weapon and wrist gauntlets. (Pants not included) (4 Piece Set) | Hooded black leather look dress with attached chiffon cape and embellished neckline piece. Includes fingerless gloves with knives, belt, mask, and battle ax weapon. (6 piece set) | Style 9873 |
| “The Assassin” (Men’s) | | | “The Assassin” (Women’s) |
| M, L, XL, XXL | | | S, M, L, XL |

What a CHARACTER



Style 10316

“Banshee Babe”

S, M, L, XL

Sleek black jumpsuit with pant leg rips and gold skull shoulder armor. Includes hooded cape, choker, arm bands, wrist gauntlets with rhinestones, and knife. (Archer bow not included) (6 Piece Set)

*Some may not awaken
after an attack from this banshee
leader of the forsaken.*



Ho Lee Chit, this ninja won't quit!

"Mystic Ninja"

S, M, L, XL

Fierce ninja jumpsuit with lace-up neckline detailing and ninja symbol screen prints. Includes face mask, arm bands, gloves, knives, and belt. (Sword and shoulder weapon holster not included) (7 Piece Set)



Style 10307

"Road Rage"

S, M, L, XL

Sleek jumpsuit worn with road warrior belt, chest strap with shoulder armor, arm band, and bionic glove. (Weapon not included) (5 Piece Set)

She never has too much to say, she just pulls out her gun and blows bad guys away.



Style 9977

“Blades of Death”

M, L, XL, XXL

Black knit tunic with dragon screen print and ninja styling. Includes mask, belt, knee pads with ninja screen prints and one leg garter. (Pants, gauntlets, sword, knife, and shoulder holster not included) (5 Piece Set)

(Shown With)
Style 6379
“Men’s Basic Pant”
M, L, XL, XXL



This dangerous Ninja is sexy it’s true, but get too close and he might do naughty things to you.

When you see this warrior beauty, you will know from the start, that when she goes to battle, she will conquer every heart.



Style 9487
“Dragon Warrior Queen”
S, M, L, XL

Shimmering gold foil printed turquoise knit dress with gold sequin dragon appliqué has attached gold foil printed turquoise cape. Includes gold lamé wrist gauntlets. (Sword not included) (2 piece Set)



Style 9855

“Mortal Samurai”

S, M, L, XL

Rich purple metallic romper has underwire foam cups, sheer side skirt panels, gold sequin detailing and attached/adjustable garters. Includes sequin-topped sleeves with gold Samurai print, headpiece, choker, and leg garters with attached wraps. (Sword and hair chopsticks not included) (5 Piece Set)



This Samurai beauty is elegant it’s true, but get her mad and she’ll cut you in two!

Taking the throne is easy, it’s true, when you look like this warrior, there’s nothing you can’t do.



Style 9886
“Queendom Come”
S, M, L, XL

Exquisite metallic stretch knit dress has an alluring neckline detail, high slits, and pleated front satin inset. (Sword, bracelet, and wig not included) (1 piece set)

(Shown With)
Style 9898
“Blond- Warrior Queen Wig”
O/S

Style 9874

“The Assassin” (Men’s)

M, L, XL, XXL

Hooded black leather look tunic. Includes belt with loop for weapon, battle ax weapon and wrist gauntlets. (Pants not included)
(4 Piece Set)

(Shown With)
Style 6379
“Men’s Basic Pant”
M, L, XL, XXL



*You might want to call
your love affair
with this assassin
quits, although he
might get mad and cut
you to bits.*



*This kitty is so hot you might not mind
if in the end she robs you blind.*

Style 9873

“The Assassin” (Female)

S, M, L, XL

Hooded black leather look dress with attached chiffon cape and embellished neckline piece. Includes fingerless gloves with knives, belt, mask, and battle ax weapon.
(6 piece set)



*As tempting as she might be,
this trained assassin can cut
you in three.*



Style 9965

“Cat Burglar”

S, M, L, XL

Shiny stretch dress with striped, zip-front top and back cat paw screen print. Includes beanie with cat ears, money bag, belt, rope, tail and mask. (Fingerless gloves not included)
(7 Piece Set)

Style 10305

"Deadly Diva"

S, M, L, XL

Desert warrior scarf, top,
high waist shorts, sarong,
and fingerless gloves with
tabs. Also includes 2
knives.
(7 Piece Set)

*You will be so hypnotized by her
amazing beauty,
that you won't realize she's kicking
your booty.*



Convertible



Style 10288
"Space Battle Babe"
S, M, L, XL

Space suit with black and white print has attached full length cape.
(Galaxy glasses and gun not included)
(1 Piece Set)

(Shown With)
Style 9970
"Galaxy Glasses"
O/S

Style 9971
"Galaxy Gun"
O/S





Please give this girl a little space...

Style 10286

"Stardust Warrior"

S, M, L, XL

Sleek black, gold and silver metallic jumpsuit with space suit detailing. Includes fingerless space gloves and utility belt. (Galaxy glasses and gun not included) (3 Piece Set)

(Shown With)
Style 9970
"Galaxy Glasses"
O/S

Style 9971
"Galaxy Gun"
O/S

Style 9881
"The Snake Charmer"
S, M, L, XL

Seductive metallic red top with gold sequin snakes, fringe and gold coin detailing. Includes side slit velvet skirt with sequin embellished waistband and snake detail, headpiece with coins, and golden prop snake. (Earrings not included)
(4 Piece Set)

This Freak Show beauty has a lot at stake; she might get bitten if she doesn't charm that snake!



A look at this Space girl and you might embrace, doing a little dating in outer space!



Style 9852
"Space Wars"
S, M, L, XL

Shiny zip-front metallic silver jumpsuit with intergalactic detailing. Includes matching belt. (Glasses, gauntlets, earrings and gun not included)
(2 Piece Set)

(ShownWith)
Style 9970
"Galaxy Glasses"
O/S

Style 9971
"Galaxy Gun"

Style 9969
"Gauntlet Gloves"
O/S

Style 9882
"Freak Show"
M, L, XL, XXL

Red velvet jacket with gold satin lapels and cuffs has black sequin trim. Large "Freak Show" vintage looking screen print on the back of the jacket. Includes striped satin vest with attached dickie with bow tie, and collapsible velvet hat. (Pants not included)
(3 Piece Set)

Step right up for what its worth, to see the greatest Freak Show here on Earth!

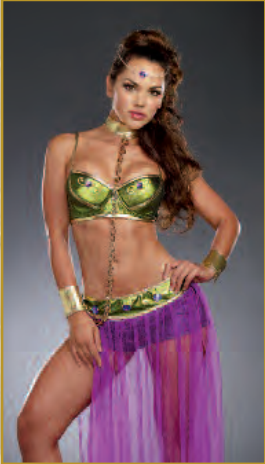


Being a prisoner in chains isn't bad you see, it just depends who has the key!



Style 9845
"Slave Princess"
S, M, L, XL

Green metallic underwire bustier top with zip-off midriff and rhinestone and metallic gold scroll detailing. Slave skirt has attached shorts. Includes choker with snap-on chain, wrist and ankle cuffs, and rhinestone headpiece.
(6 Piece Set)





*This sorcerer will show you magical delights
in his private room late at night!*

Style 10323

"The Sorcerer"

M, L, XL, XXL

Sweeping cape with large collar and gold mystical symbols. Includes velvet vest with attached satin shirt, and magic wand. (Pants not included) (3 Piece Set)

Style 10320

“Ivy League”

S, M, L, XL

Enticing rich velvet dress with foam underwire cups and tulle train with ivy leaf detailing. Includes ivy hair clip and ivy wrist bands.
(Fishnet pantyhose not included)
(3 Piece Set)

(Shown With)
Style 0257H
“Fishnet Pantyhose with
Solid Foot Bottom”
O/S, O/S Queen

*It might take you a while to realize that
this alluring beauty has a killer smile!*





*This crime fighter has no fear;
she would use her sword if someone
stole her beer.*

Style 10318

"Power of Justice"

S, M, L, XL

Shimmering crime
fighter dress with gold
sequin appliqué and trim.
Includes headpiece,
armbands, wrist
gauntlets, gold rope,
and boot toppers.
(Sword not included)
(6 Piece Set)

Style 10321
"Harlequin Blaster"
S, M, L, XL

Sleek metallic jumpsuit with zipper-front bodice has sequin detailing and an attached chain. Includes fingerless gloves, choker, and knife. (Hair ties and bat not included)
(4 Piece Set)

Who knew this naughty clown could turn the city upside down?





Criminal INSTINCTS

Style 10294

Style 10294

“Bat Out of Hell”

S, M, L, XL

Sleek black jumpsuit with silver metallic detailing has attached bat wing cape. Bat mask included. (Gloves not included) (2 Piece Set)

(Shown With)
Style 5218
“Luna Glove”
O/S



*It's hard to believe this beauty ever
looked like a caterpillar.*

Style 10327

"Bella Butterfly"

S, M, L, XL

Brightly colored satin
butterfly dress with
sequin trim has skirt
lining. Includes butterfly
wings and antennae
headband.
(Fishnet pantyhose not
included)
(3 Piece Set)

(Shown With)

Style 0257H

"Fishnet Pantyhose with
Solid Foot Bottom"

O/S, O/S Queen

Style 4582

"Ursula Petticoat"

O/S



Style 9959
"Cat Fight"
S, M, L, XL

Metallic black sexy, stretchy zip-front jumpsuit with ripped front pant leg detailing and attached tail. Includes headpiece with mask and belt. (Whip and jewelry not included) (3 Piece Set)



This naughty kitty loves to growl, late at night when she's out on the prowl.



Style 8760
"Cheetah-Luscious"
S, M, L, XL
1X/2X, 3X/4X

Leopard print stretch crush velvet hooded dress with faux fur trim and removable tail. Includes boot covers. (3 piece set)



Style 8793
"Panda Bear Baby"
S, M, L, XL

Zipper front stretch velvet dress with faux fur trimmed hood, panda bear face and pom pom ties. Includes matching paw print mittens, faux fur trimmed boot covers and attached tail. (3 piece set)

(Suggested Accessory)
Style 4582
"Ursula Petticoat"
O/S



Watch this zebra prance and you'll get your chance.



Style 8147
"Zebralicious"
XS, S, M, L

Punk inspired zip-front stretch knit zebra print pantsuit has faux fur trimmed hood with ears and Mohawk wig hair mane. Includes flattering waist cinching corset with boning and back stud detail with matching removable tail. (3 piece set)





Best of THE WEST

Style 10224



This native beauty was never alone, many a warrior did follow her home.



Style 10224
"Hot on the Hunt"
S, M, L, XL

Animal print stretch ultra suede dress with Native American trim and attached fringe skirt. Includes braided headpiece with feathers.
(Tomahawk not included)
(2 Piece Set)



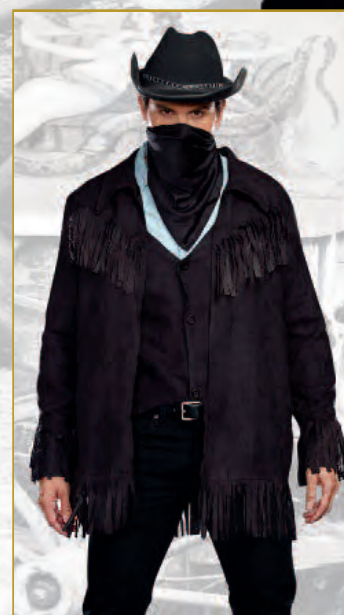
Whenever his girlfriend talked about becoming his bride, off into the sunset he did ride.

Brown suede Western-style fringe coat.
Includes cowboy hat. (Shirt, bandana, and jeans not included)
(2 Piece Set)

Style 10228
"Rifleman"
M, L, XL, XXL

Every cowboy knew she was the best, when it came to having a drinking buddy in the wild, wild west!

All the cowgirls came from far and wide, to ask this cowboy to give them a ride.



Style 9831
"Whiskey Girl"
S, M, L, XL

Black and pink velvet dress with Western style metallic print, fringe detailing, off-the-shoulder sleeves, tiered ruffle skirt with lace and attached garters. Includes ostrich feather barrette. (Thigh highs and jewelry not included) (2 Piece Set)

(Shown With) Style 10366 "Fishnet Thigh Highs with Back Seam"
O/S, O/S Queen

Western style black suede, fringed jacket. Includes cowboy hat, bandana, and vest. (Shirt, belt, and pants not included) (4 Piece Set)

Style 9832
"Buck Wild"
M, L, XL, XXL

Style 8197
"Chief Wansum Tail"
M, L, XL, XXL

Native American
styled ultra suede
fringed shirt and pants
with feather headdress.
(3 piece set)



*This Chief wants to
show you his
pow WOWWWW!!!*



*This native beauty has
such allure, she's
reservation royalty
for sure.*

Style 5076
"Tribal Princess"
XS, S, M, L

Stretch faux suede
dress with feather and
turquoise bead trim
lace-up neckline and
fringe hem. Includes
matching feather
headpiece, armband
and tomahawk.
(4 piece set)



*Many a warrior she
did delight in her
teepee late at
night.*

Style 8196
"Reservation Royalty"
S, M, L, XL
1X/2X, 3X/4X

Ultra suede dress has Native American beaded appliqué and fringe detail. Includes a headpiece with feathers and matching beaded appliqué.
(2 piece set)





Hunting for buffalo was hard for this beauty indeed, because every time she went out, she caused a stampede.



Tan ultra suede dress with authentic Native American beading and high-low fringed hemline. Includes beaded headpiece and belt. (Tomahawk not included)
(3 Piece Set)

Style 9828
"Native Princess"
S, M, L, XL



The other braves thought it was wrong, that the chief was blessed with an arrow so long.

Style 9189
"Chief Long Arrow"
M, L, XL, XXL

Native American styled ultra suede fringed shirt and pants with feather headdress.
(3 piece set)



How about a little tribal trouble?

Style 5877
"Pocahottie"
S, M, L, XL
1X/2X, 3X/4X

Faux suede dress with intricate beaded neckline and layered fringe hem. Includes matching beaded headpiece with feathers.
(2 piece set)



Battle of THE WARRIORS



Styles 10216 & 10217



This exquisite beauty had such fun winning every war, one by one.



Style 10216
"Battle-licious"
S, M, L, XL

Black velvet warrior dress with silver Roman trim and underwire foam cups. Dress has an attached back cape with a large silver metallic lion head screen print. Includes wrist gauntlets. (Sword and helmet not included) (2 Piece Set)

(Shown With) Style 10220 "Battle-licious Helmet"
O/S

This handsome beast never rests, he's always looking for another conquest!



This versatile costume can be worn with or without the included shirt. Includes padded ornate collar with attached cape, faux leather warrior skirt and wrist gauntlets. (Helmet and sword not included) (4 Piece Set)

(Shown With) Style 10221 "Battle Beast Helmet"
O/S

Style 10217
"Battle Beast"
M, L, XL, XXL

Convertible



No woman ever became bored with this mighty warrior and his long, crafty sword.



Style 10274
"Deadly Warrior (Men's)"
M, L, XL, XXL

Black warrior tunic with gold trim and embroidered crest.
Includes wrist gauntlets. (Pants, sword, and shield not included)
(2 Piece Set)

(Shown With) Style 6379 "Men's Basic Pant"
M, L, XL, XXL

Winning the battle wouldn't take long if you brought this deadly warrior along.



Gold metallic trimmed warrior dress with embroidered crest,
shoulder pads, and attached hood.
Includes wrist gauntlets. (Sword not included)
(2 Piece Set)

Style 10273
"Deadly Warrior (Women's)"
S, M, L, XL
1X/2X, 3X/4X



Out to battle to do her duty,
went this diligent Viking
beauty.



Style 10222
"Voracious Viking (Women's)"
S, M, L, XL

Rich brown faux leather dress with gold Celtic trim, dragon screen print and foam underwire cups with faux fur detailing. Includes faux fur capelet and wrist gauntlets. (Sword and helmet not included)
(3 Piece Set)

The only thing that didn't seem right,
was this handsome Barbarian hated to
fight.



Tan faux leather tunic with Celtic belt, dragon screen-print and trim. Includes long cape with faux fur collar. (Shield, pants, and sword not included)
(3 Piece Set)

(Shown With) Style 6379 "Men's Basic Pant"
M, L, XL, XXL

Style 10223
"Voracious Viking (Men's)"
M, L, XL, XXL



*A duel with this beauty might give you
a thrill, but keep in mind she's trained
to kill.*

Style 10254

"Desert Warrior"

S, M, L, XL

Gauze tunic with side
slits and metallic bronze
trim. Includes pants,
scarf, belt and wrist
gauntlets.
(Swords not included)
(5 Piece Set)

Style 10229
"Scorpion Warrior Queen"
S, M, L, XL

Elegant iridescent stretch metallic dress in gold and aqua hues has a sequined neckline appliqué and attached gold cape. Jeweled turban included. (Dagger not included) (2 Piece Set)

The fate of her kingdom never looked bleak. She won every battle and still looked quite chic.



Style 8181

"Remember the Trojans"

S, M, L, XL

Convertible corset style dress with lightly padded underwire cups, adjustable shoulder straps and attached jeweled belt. The strategically placed zipper across skirt hemline allows the dress to go from ankle length to short and sexy. Once unzipped, the bottom of the dress can be worn as a cape. Includes wrist gauntlets, sword and headpiece. (4 piece set)



This warrior always has time for fun, even though there are battles to be won.



Fighting dirty was her way, winning battles day after day.



Style 9827

"Victorious Beauty"

S, M, L, XL

Faux distressed brown leather dress with gold detailing. Includes matching brown velvet cape with faux fur collar. (Sword not included) (2 Piece Set)

Style 9454

"Hercules"

M, L, XL, XXL

Distressed brown leather look tunic has gold trim detailing, attached belt and red cape. Includes wrist gauntlets and arm tie. (Sword and shield not included) (3 piece set)

Hercules! Hercules! Hercules!



It wasn't from fear that all the women of his kingdom couldn't help but stare.



Style 9409

"Dragon Warrior King"

M, L, XL, XXL

Brown distressed leather look tunic with contrast waistband and long brown velvet cape with faux fur collar, detachable straps and attached crossed warrior bands. (Sword, gloves, shield and pants not included) (2 piece Set)

(Shown With)
Style 6379
"Men's Basic Pant"
M, L, XL, XXL

Style 9846
"Knight Time" (Women's)
S, M, L, XL

Silver metallic dress with chainmail armor-look hood and mesh sleeves. Intricately embroidered two-headed dragon appliqué and black stud detailing. Includes knee pads. (Sword, gauntlets and shield not included)
(2 Piece Set)

(Shown With)
Style 9969
"Gauntlet Gloves"
O/S



*Taking a slice out of crime,
one sword fight at a time!*

Style 9968
"Knight Time" (Men's)
M, L, XL, XXL

Silver metallic hooded medieval tunic with exaggerated shoulder armor detailing, double dragon embroidered appliqué and screen printed metal studs. Includes fingerless gloves and belt.
(Shield and sword not included)
(3 Piece Set)

(Shown With)
Style 6379
"Men's Basic Pant"
M, L, XL, XXL



*This handsome knight
is hot that's true, but
he can also slay a
dragon
for you.*

*This warrior always
has such fun, she parties
it up when the
battle is won.*



Style 9404
"Queen of Swords Warrior"
S, M, L, XL
Gold and black foil dress with unique chainmail armor print, metal stud trim and gold cross appliqué. Includes headpiece and wrist gauntlets. (Sword and shield not included)
(3 piece set)

This naughty warrior would much rather play, than slay dragons and fight battles everyday.

Slaying the king seemed like it would be easy, but chopping off his head made this warrior queasy.

Style 9824
"The King Slayer" (Women's)
S, M, L, XL
1X/2X, 3X/4X

Shimmering blue and black velvet dress with silver sequin detailing and embroidered crest has attached velvet cape. Includes wrist gauntlets and rhinestone headpiece. (Sword not included)
(3 Piece Set)



Convertible



Warrior dress with silver screen prints and detailing has strategically placed zipper across skirt hemline, which allows the dress to go from long to short. Includes elaborate wrist gauntlets and headpiece. (Sword and earrings not included)
(3 Piece Set)

Style 9826
"Glorious Gladiator"
S, M, L, XL



The women of his village would never tattle, about what this warrior liked to do when he came home from battle.

Style 9825
"The King Slayer" (Men's)
M, L, XL, XXL

Distressed faux black leather with metallic blue tunic and embroidered crest has an attached velvet cape. Includes wrist gauntlets. (Sword and pants not included)
(2 piece set)

(Shown With)
Style 6379
"Men's Basic Pant"
M, L, XL, XXL



Through THE AGES

Style 10265



Me Tarzan
You Jane.

Convertible



*This wild child loves
the jungle life.
If only she could get
Tarzan to make
her his wife!*

Style 10295
"Tarzan"
M, L, XL, XXL

This versatile costume can be worn with or without the suede tunic. Includes jagged edge skirt, belt and arm tie.
(Spear not included)
(4 Piece Set)



Animal print ultra suede romper with overskirt that ties at the shoulder for adjustability. Includes head wrap and matching sleeves.
(Spear not included)
(3 Piece Set)

Style 9870
"Jungle Fever"
S, M, L, XL



Need an arc? I Noah Guy

Style 10237
"Jesus"
M, L, XL, XXL

White satin robe with removable sash and rope belt.
(3 Piece Set)



Jesus, take the wheel...



White satin gown, rope belt and hooded cape.
(3 Piece Set)

Style 10238
"Mary"
S, M, L, XL

This beautiful Egyptian Queen lost all her money on a pyramid scheme!



Style 10290
"Exquisite Cleopatra"

S, M, L, XL
1X/2X, 3X/4X

Exquisite velvet gown with Egyptian pattern has front slits and gold trim detailing. Includes Egyptian collar and belt.
(Jewelry and headpiece not included)
(3 Piece Set)



(Shown With) Style 9518 "Snake Crown"
O/S

Cleopatra was dying to have a fling with this sexy Egyptian king!



Tunic with gold Egyptian motif and gold trimmed shoulder tabs. Includes Egyptian belt with sword loop and wrist gauntlets.
(Sword, shield and pants not included)
(3 Piece Set)

(Shown With) Style 6379 "Men's Basic Pant"
M, L, XL, XXL

Style 10291
"Warrior of De Nile"

M, L, XL, XXL

Style 9840

"Cleopatra"

S, M, L, XL

Multi-color rhinestone embellished Egyptian collar with attached cape and wristbands. Gold stretch dress with Egyptian motif and sequin detailing. Includes beaded headpiece. (Jewelry not included) (3 piece set)

This naughty babe of the Nile always leaves them with a smile!



Naughty Cleopatra had a fling with both handsome Caesar and the Egyptian King!



Style 9833

"Cleo"

S, M, L, XL

Stretch black velvet asymmetrical gown with jeweled, sequined Egyptian collar and attached gold sashes. Includes belt and adjustable gold armbands. (Jewelry and headpiece not included) (3 Piece Set)

(Shown With)
Style 9972
"Dazzling Ruby Headpiece"
O/S

Style 9841

"Julius Caesar"

M, L, XL, XXL

Distressed black faux leather tunic with gold embroidered detailing. Includes red velvet cape with medallion, and gold leaf headpiece. (Sword, shield, and gauntlets not included) (3 Piece Set)

This leader of Rome always wanted his way, whenever beautiful Cleopatra came to stay.



The mighty king of Egypt always got what he desired, with never a shortage of love slaves for him to hire.



Convertible



Style 9893

"King of Egypt"

M, L, XL, XXL

This versatile costume can be worn with or without the included shirt. Includes Egyptian collar with attached gold cape, wrist gauntlets, Royal Nemes headpiece, Eye of Horus Necklace, and Egyptian Shendyt skirt with embellished waistband. (5 Piece Set)

Style 10265

"Lady of Thrones"

S, M, L, XL

Rich, dark red velvet front
lace-up gown with
metallic gold velvet trim
has large lined
medieval hood.
(Earrings not included)
(1 Piece Set)

*This medieval beauty is no fool,
it's just a matter of time before she
gets to rule!*



Style 10234

"Medieval Mistress"

S, M, L, XL

Don't come a-knockin' when her castle's rockin'!

Versatile rich blue velvet dress can go from long to shorter with a hidden zipper strategically placed along the hemline. Lower chiffon section of the dress can be used as a cape. Includes headpiece. (Jewelry not included) (2 Piece Set)

Convertible



Style 10275

"Medieval Princess"

S, M, L, XL

Rich velvet gown with gold sequin trim and chiffon sleeves. Includes belt and headpiece. (Bracelet not included) (3 Piece Set)

This medieval princess loved to roam outside the castle when the king wasn't home.





This wench wished the handsome knight that brought her flowers, also believed in taking showers.

Style 10289

"Medieval Fair Wench"

S, M, L, XL

1X/2X, 3X/4X

Flirty burgundy velvet and sage green satin wench dress with floral trim and lace-up front. Includes rose headpiece. (2 Piece Set)



Style 9844
"Mighty Musketeer"
S, M, L, XL

Rich blue velvet dress with glitter sequin print and embroidered crest. Includes matching lined cape with large silver cross on back, and velvet Musketeer hat. (Gauntlets and sword not included)
(3 Piece Set)



"All for one, one for all!"

Looking for a hot knight to slay me a dragon. Only serious applicants need apply.



Style 10000
"Mighty Musketeer"
M, L, XL, XXL

Rich blue velvet tunic with large embroidered crest and silver trim has attached satin cape with silver printed cross on the back. Includes medieval belt and Musketeer hat with ostrich feather. (Gauntlets, pants, and sword not included)
(3 Piece Set)



Running into this swordsman couldn't be beat, because what this Musketeer could do with his long sword was indeed a treat!

(Shown With)
Style 6379
"Men's Basic Pant"
M, L, XL, XXL

Style 9842
"Medieval Enchantress"
S, M, L, XL
1X/2X, 3X/4X

Exquisite embossed burgundy velvet gown with gold sequin neckline piece and sheer sleeves. Includes gold sequin medieval belt and headpiece. (Jewelry not included)
(3 Piece Set)





*Don't be concerned when this disco
dude starts to "burn, baby burn."*

Style 10233
"Disco Inferno" (Men's)
M, L, XL, XXL

Gold metallic holographic button down shirt.
(Pants and necklace not included)
(1 Piece Set)

(Shown With) Style 9605 "Men's Disco Pant"
M, L, XL, XXL



She does it all under the disco ball.

Gold metallic holographic disco dress with slit and
tie belt.
(Jewelry not included)
(2 Piece Set)

Style 10232
"Disco Inferno" (Women's)
S, M, L, XL

Style 10230

"Love-Fest"

S, M, L, XL

1X/2X, 3X/4X

Groovy 60's print dress with matching headband, sunglasses and peace sign belt.
(Earrings not included)
(4 Piece Set)

Make love not war!



Oh lord won't you buy me a Mercedes Benz.

Style 10231

"Wild at Woodstock"

S, M, L, XL

Tie dye stretch velvet
tunic and flared leg
pants. Includes
Macramé styled vest and
belt.
(Sunglasses and hat not
included)
(4 Piece Set)



Style 9909

“Yeah Baby!” (Men’s)

M, L, XL, XXL

1960’s mod black and white tunic with peace sign screen prints. (Pants and wig not included)
(1 Piece Set)



This Disco Doll was in hot pursuit, of a Disco guy in a three-piece suit.



Style 9859

“Yeah Baby!” (Women’s)

S, M, L, XL

1X/2X, 3X/4X

Black and white mod dress with daisy trim straps. Includes headband and boot covers. (Jewelry not included)
(3 Piece Set)

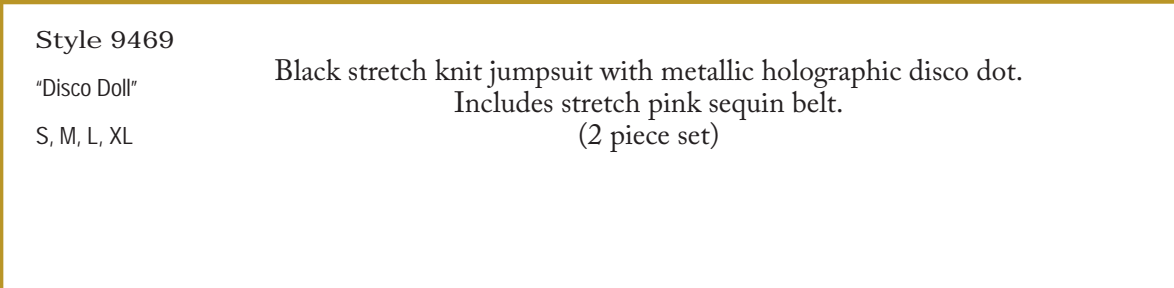


Style 9469

“Disco Doll”

S, M, L, XL

Black stretch knit jumpsuit with metallic holographic disco dot. Includes stretch pink sequin belt.
(2 piece set)





Many a woman he did choose, while doing the Hustle in his platform shoes.

Black polyester button front shirt with metallic holographic disco dot. (Pants not included)
(1 piece set)

(Shown With) Style 9605 "Men's Disco Pant"
M, L, XL, XXL

Style 9468
"Disco Dude"
M, L, XL, XXL



The 60's were such fun, love and peace for everyone.

Suede halter top with lace-up detailing, 1960's styled patches, and matching fringed pants. Includes headband with daisy and fringe detail.
(Jewelry not included)
(3 Piece Set)

Style 9849
"Peace Out"
S, M, L, XL



She's got the Go Go beat that can't be beat!

Stretch knit retro pattern A-line Go Go dancer dress has bell shaped long sleeves and unique shaped neckline. Includes matching retro glasses, earrings, headband and faux vinyl daisy belt.
(5 piece set)

Style 8158
"Go Go Gorgeous"
S, M, L, XL

STOOD & Guys

Styles 8190 & 10213



Many a man has sung the blues, when
they found out her favorite accessory
was cement shoes.

Style 10213

"Bad-acious Gangster"

S, M, L, XL

Flattering dress with
attached machine gun
chain fob, pinstripe vest
and skater style skirt.

Includes cap, wrist
cuffs, collar with
attached tie and arm
garter.

(Cigar and money not
included)
(5 Piece Set)



Ain't this 1920's beauty sweet?
When she dances the Charleston,
she's fast on her feet!



Style 10267
"Ain't She Sweet"
S, M, L, XL
1X/2X, 3X/4X

Dazzling red sequin dress with rose trim and sequin fringe. Includes sequin headpiece with rose appliqué. (Gloves, boa, jewelry, and cigarette holder not included) (2 Piece Set)
(Shown With) Style 5218 "Luna Glove"
O/S



This Gatsby guy had such charm,
that there was always a beautiful
flapper on his arm.



1920's styled tuxedo jacket with tails, white satin vest with attached faux shirt front and bow tie. Includes fringed scarf. (Pants and shirt not included) (3 Piece Set)

Style 10211
"Party at Gatsby's"
M, L, XL, XXL



This dazzling flapper didn't think it was a sin, to start each day with a little bathtub gin!

Style 10210

"Downton Doll"

S, M, L, XL

1X/2X, 3X/4X

Exquisite midnight blue embossed stretch velvet dress with jeweled neckline and sequin fringe trim. Includes jeweled headpiece with ostrich feather. (Jewelry, boa, cigarette holder, and gloves not included)
(2 Piece Set)



(Shown With)
Style 5218
"Luna Glove"
O/S



Style 10212

“Cotton Club Cutie”

S, M, L, XL

Elegant styled flapper dress with sequin design front, beaded 1920's neckline trim, and sequin fringe. Includes sequin headpiece with ostrich feather. (Jewelry, gloves, boa, and cigarette holder not included)
(2 Piece Set)

(Shown With)
Style 5218
“Luna Glove”
O/S

Men at Gatsby's party were put into a trance, when this 1920's beauty started to dance.





*She loved bootleg whiskey
and had her hair all in curls;
everyone knew she was one
of Gatsby's girls!*

Exquisite red sequin design front dress with stretch velvet back and sequin fringe detailing. Includes stretch sequin headpiece with ostrich feather. (Gloves, boa, jewelry, and cigarette holder not included)
(2 Piece Set)

Style 9834
"Gatsby Girl"
S, M, L, XL

(Shown With) Style 5218 "Luna Glove"
O/S



*I know a spot where the
gin is cold and the piano
is hot... And all that Jazz.*

Style 8832
"Jazzy Jezebel"
S, M, L, XL
20's inspired sequin dress with keyhole front detail, gold beaded neckline, cluny lace and sequin fringe hemline. Includes matching choker and stretch sequin headpiece with feather. (Boa, cigarette holder and pantyhose not included)
(3 piece set)

(Shown With)
Style 7034
"Fishnet Pantyhose"
O/S

Style 5218
"Luna Glove"
O/S



*She loved to dance the
Charleston, and drink lots
of whiskey, and so
this simply fab flapper
always felt
very frisky!*

Style 9836
"Simply Fab!"
S, M, L, XL
Black velvet and sequin front dress with silver sequin and rhinestone appliqué. Includes sequin ostrich feather headpiece. (Gloves, boa, jewelry, and cigarette holder not included)
(2 Piece Set)

(Shown With)
Style 5218
"Luna Glove"
O/S

Style 9458
“Life’s a Party”
S, M, L, XL

Silver novelty sequin dress with exquisite 1920’s look neckline piece and sequin fringe bottom. Includes stretch silver sequin headpiece with white ostrich feather. (Jewelry, boa, satin gloves and cigarette holder not included) (2 piece set)



This party girl kicked off her shoes, danced all night and drank bathtub booze.

Style 8812
“Dames Like Us”
S, M, L, XL
1X/2X, 3X/4X

20’s style dress with reversible black/red dangling paillettes and black beaded neckline. Stretch sequin headpiece with ostrich feather included. (Jewelry, boa, cigarette holder, gloves and pantyhose not included) (2 piece set)



Why does everyone have to make such a fuss? They’re just jealous of dames like us!

(Shown With)
Style 7034
“Fishnet Pantyhose”
O/S

Style 5218
“Luna Glove”
O/S



Drinking, smoking, sequins shining bright, this sophisticated lady loves to dance all night.

Style 9837
“Sophisticated Lady”
S, M, L, XL
1X/2X, 3X/4X

Burgundy velvet dress with sequin scroll design has an intricately embroidered gold neckline and hemline trim with sequin fringe. Includes gold sequin headpiece with ostrich feather. (Gloves, boa, jewelry and cigarette holder not included) (2 Piece Set)



(Shown With) Style 5218 “Luna Glove”
O/S



All the flappers loved him, though they knew it wouldn't last; at least for the night, Good Time Charlie was a blast.

Striped three button front jacket. Includes hat and bow tie.
(Shirt and pants not included) (3 Piece Set)

(Shown With) Style 6379 "Men's Basic Pant"
M, L, XL, XXL

Style 9838

"Good Time Charlie"

M, L, XL, XXL



Blowing on his dice is sure nice!



Style 9889

"Dirty Work"

S, M, L, XL

Sleek 40's styled halter dress with back slit and attached red tie. Includes suspenders, carnation pin, gangster hat and arm garter. (Cigar, jewelry and money not included) (5 Piece Set)



Style 8105

"Zoot Suit Riot"

M, L, XL, XXL

Button front longer length pinstripe zoot suit with matching pants with side pocket and gold chain detail. Includes adjustable/removable elastic suspenders, matching hat and necktie with "\$" sign detail. (Shirt not included) (5 piece set)

Style 8188

“Mobster Boss”

S, M, L, XL

Gangster pinstripe knit dress with sexy peak-a-boo scalloped lace neckline and matching shorts. Includes hat with feather, belt, carnation pin and choker. (Thigh highs and stocking toppers not included) (6 piece set)



You might think this mobster boss is so much fun, until you're staring down the barrel of her gun.

Style 8190

“Gangsta”

M, L, XL, XXL

Black and white pinstripe double breasted gangster suit. Includes a dickie, machine gun screen printed necktie, carnation pin and hat. (Shirt not included) (6 piece set)



If this sexy gangster is the one you choose, he might make you an offer you can't refuse.

Although she was alluring, they knew it was a shame, because this tempting beauty was a very dangerous dame.



Style 9839

“Deadly Dames”

S, M, L, XL

1X/2X, 3X/4X

Black and white pinstripe knee-length knit dress with removable carnation and tie with dollar sign. Includes gangster hat and arm garter. (Cigar, jewelry and money not included) (4 Piece Set)



Worokin' IT



Style 10218

Style 10218

“French Kisses”

S, M, L, XL

1X/2X, 3X/4X

Adorable French maid dress with velvet bodice, venetian lace appliqué, and full satin skirt with attached petticoat. Includes lacy head piece and choker. (Fingerless gloves, duster, thigh highs, and stocking bow toppers not included) (3 Piece Set)



(Shown With)
Style 10367
“Lace Top Fishnet
Thigh Highs”
O/S

*She can clean your house that is true,
but there's not much she can do about
dirty you!*





*Passengers would always say, that
she was first class all the way!*

Style 10308

"First Class"

S, M, L, XL

Adorable flight
attendant dress with
official flight wings
patch and attached belt
and skirt. Includes
hat and scarf.
(Thigh highs and
stocking bow
toppers not included)
(3 Piece Set)

(Shown With)
Style 10366
"Fishnet Thigh Highs
with Back Seam"
O/S, O/S Queen

Style 9417
"Keep It Clean"
S, M, L, XL
1X/2X, 3X/4X

Black stretch velvet vintage styled dress with ivory and gold embroidered detailing. Includes embroidered apron, headpiece and choker. (Feather duster not included) (4 piece set)



The only thing she has left to clean is your dirty mind.

Style 8211
"Maid to Order"
S, M, L, XL
1X/2X, 3X/4X

Ruffled pinafore apron with vintage Parisian print of polka dots and attached to black knit dress with sheer sleeves and large back bow. Includes removable/adjustable garters with bows, headpiece and feather duster. (Thigh highs not included) (3 piece set)

(Shown With)
Style 7031
"Sheer Thigh Highs with Back Seam"
O/S



You wouldn't be upset if your house was a mess, if your maid looked like this in a dress.



Customers came from miles around, because they heard he had the best wiener in town.



Style 9976
"Diner Dude"
M, L, XL, XXL

50's styled red and white stripe apron with screen printed "Bob" nameplate. Includes bow tie, hat, and "Best Wiener in Town" pin. (Shirt, pants, pencil, tray and food not included) (4 Piece Set)

(Shown With) Style 6379 "Men's Basic Pant"
M, L, XL, XXL



Customers lined up at the door because she had the hottest buns and that's for sure!



50's styled red and white striped dress with attached petticoat, heart buttons and screen printed "Betty" nameplate. Includes hat with heart button, lace edged apron, scarf and "Hot Buns" pin. (Additional petticoat, glasses, socks, tray and food not included) (5 Piece Set)



Style 9975
"Diner Doll"
S, M, L, XL
1X/2X, 3X/4X

Even if the flight was the absolute worst, she always made sure her customers came first.



Black stretch knit dress with lace-up neckline, gold trim and detailing. Includes "Mile High Captain" pin, and pilot's hat. (3 Piece Set)



Style 9918
"Service With a Smile"
S, M, L, XL
1X/2X, 3X/4X

This Mile High Captain always takes time out of his flight to make sure his passengers feel just right!



Button front jacket with satin and gold trim details. Includes pilot hat, collar with necktie and removable "Mile High Pilot Hugh Jorgan" name badge. (Pants not included) (4 piece set)

(Shown With)
Style 6379
"Men's Basic Pant"
M, L, XL, XXL

Style 5236
"Mile High Pilot Hugh Jorgan"
M, L, XL, XXL

Extra Curricular ACTIVITIES



Styles 10315 & 10322



Style 10322
"World Champion" (Men's)
M, L, XL, XXL

Black and gold satin robe with tie belt and gold metallic World Champion screen print. Includes boxing gloves, shorts, and World Champion Belt. (5 Piece Set)

This World Champion boxer with his willing body is looking for a massage from a ringside hottie.



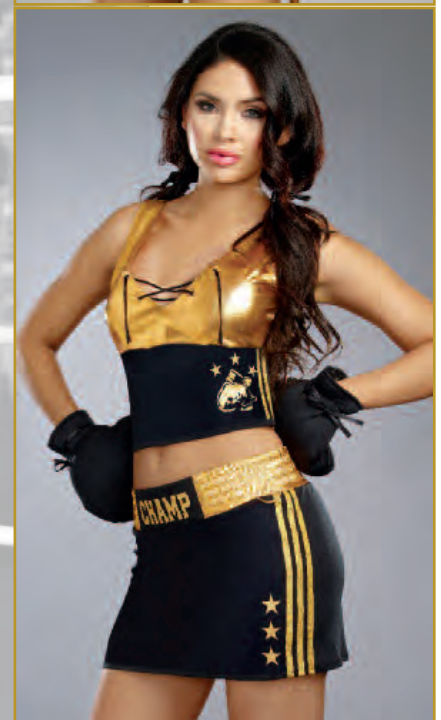
*This boxer beauty loves to fight,
she's knocking them out left and right!*

Style 10315

"World Champion" (Women's)

S, M, L, XL

Black satin boxing robe
with belt. Includes
lace-up top, boxing
gloves, and skirt with
loop to hold gloves,
athletic striping and
screen prints.
(5 Piece Set)



Style 6477
"Ride It"
XS, S, M, L

Gloss checker print microfiber zip front romper with side stripes and race car patches. Includes matching microfiber checker print skirt, belt with "Racing" heat transfer and flag. (Sunglasses and fence net pantyhose not included)
(4 piece set)

(Shown With)
Style 0010H
"Fence Net Pantyhose"
O/S

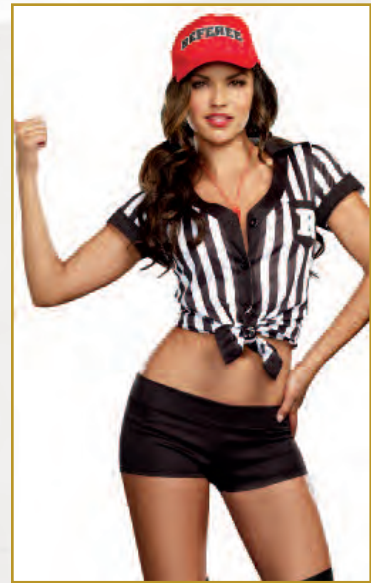
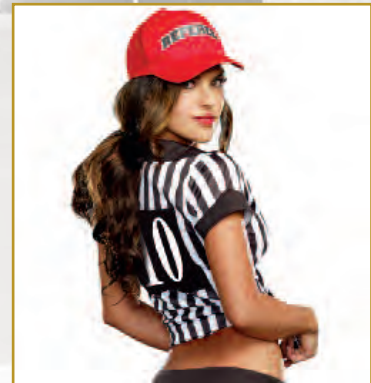


Style 6469
"Grand Slam"
S, M, L, XL
1X/2X, 3X/4X

Stretch knit snap front dress with sequin embroidered "Grand Slam" appliqué and heat transfer number "10" detail on back. Includes stretch knit short with elastic waist, baseball cap and athletic knee high socks. (Baseball mitt and baseball not included)
(4 piece set)



This insatiable referee loves when players play rough; once she blows her whistle, their growing yardage is never enough.



Style 9494
"My Game, My Rules"
S, M, L, XL

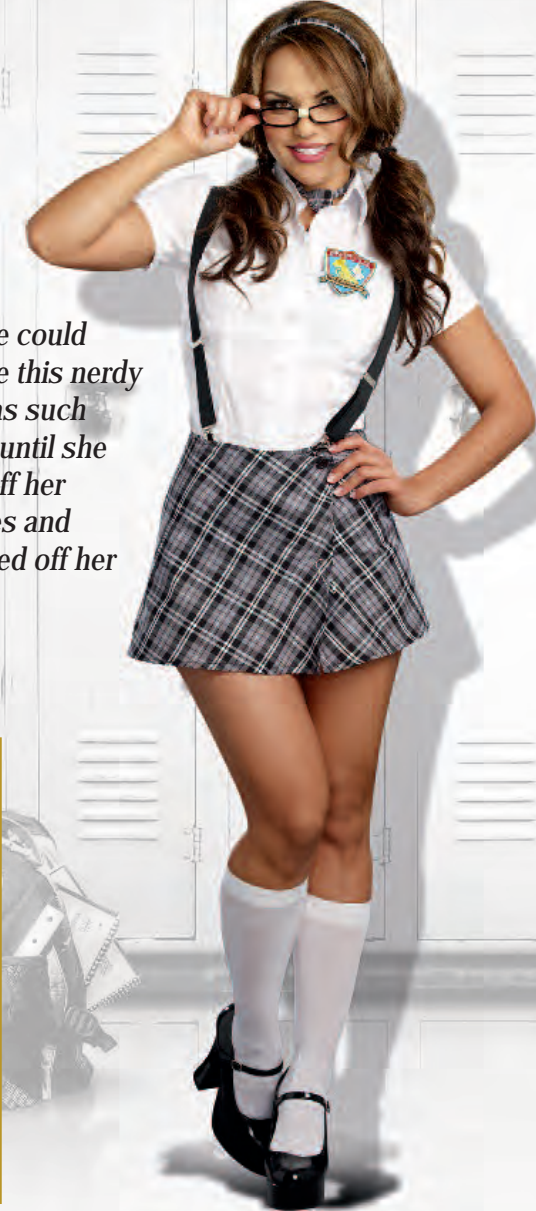
This versatile button down dress can also be worn tied around the waist as a top. Includes shorts, thigh high socks, whistle and hat.
(5 piece set)

Style 9860
"Nerdy to Naughty"
S, M, L, XL

2 Costumes in 1!
This costume changes from nerdy to sexy schoolgirl by removing the skirt to reveal the high-waist shorts. Includes button-front shirt, headband, tie, kilt pin, suspenders, eyeglasses and "Nerdyville Band Champion" pin. (Knee high socks not included)
(9 Piece Set)



No one could believe this nerdy girl was such a flirt, until she took off her glasses and whipped off her skirt!



If only this hot schoolgirl had a clue, what all the boys at school would love to do!



Style 9848
"Fancy Girl"
S, M, L, XL

Woven plaid jacket with matching pleated skirt. (Knee high socks and cell phone not included)
(2 Piece Set)

Style 8201
"After School Special"
XS, S, M, L

Convertible schoolgirl has button down preppy top with chenille varsity letter detail and flirty pleated skirt. Coordinating lace trimmed bra top and necktie included. (Thigh highs and hair bows not included)
(4 piece set)

(Shown With)
Style 10342
"Bow Top Stockings"
O/S, O/S Queen



All of the boys sure did drool, when this smokin' hot schoolgirl came to school.



This Grand Slam player always brings 'em home!



Style 9419
"Prep School"
S, M, L, XL

Button front white collar shirt with a "Manhattan Preparatory School" patch and woven plaid pleated schoolgirl skirt. Includes tie with clip and headband. (Knee high socks not included)
(4 piece Set)

My HEROES

Styles 10243 & 10244





This fearless beauty is highly trained and ready for action.



Style 10243

"Friendly Fire" (Women's)
S, M, L, XL

Camouflage jumpsuit with fishnet sleeves and strategically placed rips. Includes Army hat, utility belt, bullet strip, 2 plastic knives, arm band, arm wrap and leg wrap. (Sunglasses, grenade and jewelry not included)
(8 Piece Set)

This highly skilled soldier is always ready to serve.



Style 10244

"Friendly Fire" (Men's)
M, L, XL, XXL

Camouflage utility vest with bullet holders, pockets, and Army patch. Includes Army hat, bullet strip, and fingerless gloves. (Pants and sunglasses not included)
(4 Piece Set)

Everyone loved this bombshell beauty.
She could win a war with her amazing
beauty.

Style 10276

"Bombshell Babe"

S, M, L, XL

Camouflage top with
zipper can be layered
over bra top with
"Bombshell" print and
high-waisted skirt.
Includes Army hat.
(Earrings not included)
(4 Piece Set)

Convertible



Style 10245
"Double Duty Cutie"
S, M, L, XL
1X/2X, 3X/4X

This versatile costume can be worn as an Army nurse or soldier. Army dress with underwire foam cups and star detailing. Includes Army hat, nurse hat and apron. (Earrings, stethoscope, and pantyhose not included) (4 Piece Set)

(Shown With)
Style 0257H
"Fishnet Pantyhose with Solid Foot Bottom"
O/S, O/S Queen



Versatile





*She was no ordinary dame,
General Lee Fabulous was her name.*

Style 10246
"General Lee Fabulous"
S, M, L, XL

Sleek navy jumpsuit with military buttons and trims. Includes hat, belt, nameplate that says "General Lee Fabulous" and military medal. (Gloves not included)
(5 Piece Set)

(Shown With)
Style 5218
"Luna Glove"
O/S

This heart stopping hottie couldn't understand why she kept losing patients.



Style 10247
"Heart Throbbing Hottie"
S, M, L, XL

Nurse dress with heart buttons and screen print. Includes nurse hat, "Nurse Ivana Hearthrob" nameplate, belt and top with heartbeat screen print. (Thigh highs, stocking toppers, and earrings not included)
(5 Piece Set)

(Shown With) Style 10366 "Fishnet Thigh Highs with Back Seam"
O/S, O/S Queen

This sex therapist is as generous as can be, he offers all of his services absolutely free.



Lab coat with "Hands on Therapy" front screen print. Back has a "Sex Addiction" logo. Includes nameplate that says "Sex Therapist, Dr. Ken I. Help." (Shirt, glasses, and pants not included)
(2 Piece Set)

(Shown With) Style 6379 "Men's Basic Pant"
M, L, XL, XXL

Style 10248
"Sex Therapist Ken I. Help"
M/L, XL/XXL



*Her patients couldn't help but stare,
while this hot nurse gave them tender
loving care.*

Style 10277
"Loving Care Nurse"
S, M, L, XL
1X/2X, 3X/4X

Adorable nurse dress with
built-in apron styling and
heart
buttons. Includes nurse
hat and "Sheila B. Gentle"
nameplate.
(Syringe not included)
(3 Piece Set)



Style 9435
"Nurse Anita Reefer"
S, M, L, XL

White nurse's uniform with green accents and cross screen prints. Includes nurse's hat, belt, "Nurse Anita Reefer" nameplate, and stocking topper bow pins.
(Thigh highs not included)
(5 piece set)

(Shown With)
Style 10366
"Fishnet Thigh Highs with Back Seam"
O/S, O/S Queen



Once she takes a look at your case, this helpful nurse can put a smile on your face.

Style 9411
"Dr. Bud Smoker"
M, L, XL, XXL

Men's lab coat with front and back screen print. "Dr. Bud Smoker" nameplate included.
(Pants, shirt, paper and pen not included)
(2 piece set)

(Shown With)
Style 6379
"Men's Basic Pant"
M, L, XL, XXL



This is your lucky day, Dr. Bud Smoker is going to make your problems go away.



Her patients never stopped coming throughout the day, they knew this sexy nurse would make their aches and pains go away.



Style 9964
"Night Nurse"
S, M, L, XL
1X/2X, 3X/4X

Retro-styled white knit over-the-knee length nurse dress with red button front. Includes nurse hat, belt, capelet, and "Nurse Marian A. Docta" nameplate.
(5 Piece Set)





*This fire beauty with all her charms,
was always called on false alarms.*

Style 10283

"Fire Chief"

S, M, L, XL

Red fire chief dress
with reflective tape trim
and fire patches.
Includes adjustable fire
chief hat.
(2 Piece Set)

Style 6550
"Smokin' Hot Fireman"
M, L, XL, XXL

Buckle front jacket with reflective tape trim detail. Includes knit tank top with "Fire Department" heat transfer and fireman hat. (Pants not included) (3 piece set)

This smokin' hot fireman always comes equipped with his long hose ready.



(Shown With)
Style 6379
"Men's Basic Pant"
M, L, XL, XXL



Style 9445
"Where's The Fire"
S, M, L, XL

Long sleeve red stretch knit romper has Fire Department patches and zip front detailing. Includes matching skirt, fire fighter hat and belt. (Boot toppers not included) (4 piece set)

One look at this sexy fire fighter and you'll be filled with desire. You might even be tempted to start your own fire.



Convertible



Just call 911 and this fire fighting beauty will be on the run for a little fun.



Style 9887
"Too Hot to Handle"
S, M, L, XL

Shiny black long sleeve stretch knit dress has front zipper with hook front closure. Dress is trimmed with yellow and silver and has authentic looking fire patches. Includes adjustable belt and red fire hat. (3 Piece Set)

*This naughty cop couldn't be trusted
by any of the men she busted.*

Style 10240

"Lieutenant Ivana Misbehave"

S, M, L, XL

Sleek navy jumpsuit
with shiny patent
leather trim. Includes
utility belt with
badge,
radio/speaker, leg
garters, handcuffs,
police badge pin, and
"Lieutenant Ivana
Misbehave" nameplate.
(Sunglasses and baton
not included)
(8 Piece Set)



Style 10281
"Criminally Sexy"
S, M, L, XL

Adorable police dress with pleated bottom, official police patches, side stripes and buttons. Includes hat and badge. (Sunglasses, baton, and pantyhose not included) (3 Piece Set)

(Shown With)
Style 0257H
"Fishnet Pantyhose with
Solid Foot Bottom"
O/S, O/S Queen

*This dirty cop will make you a deal,
if you don't take it, you'll go directly to
jail!*





*If this sexy cop comes your way,
you might just have an indecent
exposure ticket to pay.*



*They don't call this dirty cop
Sergeant Dick Utopia for no
reason.*

Style 9857
"Don't Stop Cop"
S, M, L, XL

Body contouring stretch bengaline dress with authentic looking police patch and detailing. Includes "Officer Sheila B. Trouble" nameplate, badge and belt.
(Baton, earrings, glasses, and handcuffs not included)
(4 Piece Set)

Beige sleeveless collared shirt with front pockets, police patch and removable tie. Includes police hat with badge, arm band, police badge pin and "Sergeant Dick Utopia" nameplate.
(Pants, belt, handcuffs, baton, and sunglasses not included)
(6 Piece Set)

Style 10239
"Sgt. Dick Utopia"
M, L, XL, XXL

Style 9905
"Officer Randi Stopsign"
S, M, L, XL

Navy blue button-front dress with shiny black vinyl trim. Includes authentic looking police patches, badge, "Officer Randi Stopsign" nameplate, belt, police radio/speaker, handcuffs, and hat with badge. (Baton not included)
(6 Piece Set)

Hardened criminals never get very far, when Officer Randi handcuffs them in her squad car.



Style 9505
"Locked Up!"
S, M, L, XL

1X/2X, 3X/4X
Sexy stretch knit, zip front romper has "Department of Corrections" screen print. Includes belt with removable handcuffs, prison ID pin, booking card, and two-way zip skirt with "Guilty" screen print on the back. (Fingerless gloves not included)
(5 piece set)

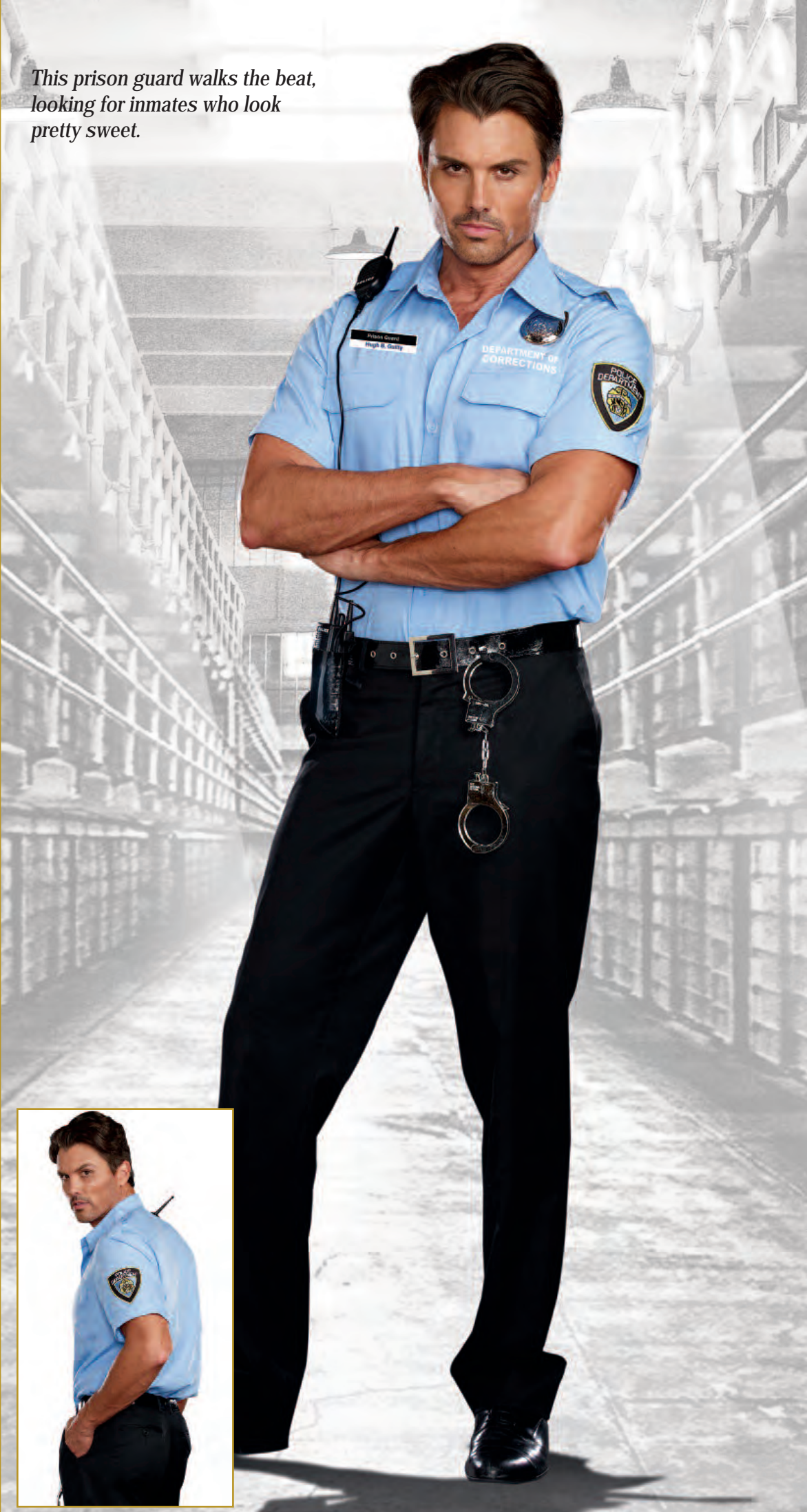
This sexy prisoner loves doing time and anything else that comes her way.



Convertible



This prison guard walks the beat, looking for inmates who look pretty sweet.



Style 9947
"Prison Guard Hugh B. Guilty"
M, L, XL, XXL

Blue button-front prison guard shirt. Includes badge, "Prison Guard Hugh B. Guilty" nameplate, belt, handcuffs and radio/speaker.
(Pants not included)
(6 Piece Set)

(Shown With) Style 6379 "Men's Basic Pant"
M, L, XL, XXL

Style 8866
Officer Sheila B. Naughty”
S, M, L, XL

Navy romper with police patches and two-way zip front skirt. Includes belt, police hat with badge, and “Officer Sheila B. Naughty” nameplate. (Sunglasses, handcuffs and baton not included) (5 piece set)



Even though they were going to be in a jail cell down town, no one ever minded her patting them down.



Corruption was his middle name. Banging heads was his game.



Style 8817
“Dirty Cop Officer Ed Banger”
M, L, XL, XXL

Black sleeveless collared shirt with front pockets, police patch and removable neck tie. Includes police hat with badge pin, “Officer Ed Banger” nameplate, removable police badge and arm band. (Sunglasses, handcuffs, baton and pants not included) (6 piece set)

Style 5150
“You’re Busted! Policeman”
M, L, XL, XXL

Button front shirt with badge. Includes hat, removable “Officer Oliver Clothesoff” namebadge, belt, handcuffs and baton. (Sunglasses and pants not included) (6 piece set)

Just when you thought this cop could be trusted, he’ll pat you down and say, “You’re Busted!”



Even fugitives on the run, thought getting arrested by this sexy cop, would be kind of fun!



Style 8816
“Dirty Cop Officer Anita Bribe”
S, M, L, XL
1X/2X, 3X/4X

Black bengaline stretch knit dress with belt and police patches on shoulders. Costume includes police hat with badge pin, “Officer Anita Bribe” nameplate and removable police badge. (Sunglasses, handcuffs, pantyhose and baton not included) (5 piece set)

(Shown With)
Style 7034
“Fishnet Pantyhose”
O/S



This DEA Agent doesn't mean to stare, but she wants to know what you're hiding in your underwear.



Style 9858
"DEA Secret Agent"
S, M, L, XL

Shiny black stretch knit romper with zip-front detailing and shiny vinyl buckles has DEA patches and attached/adjustable garters. Includes belt, leg garters, police radio/speaker, and DEA hat. (Gloves, thigh highs, baton, handcuffs, and sunglasses not included) (5 Piece Set)

(Shown With) Style 0215H "Fishnet Raw Top Stockings" O/S

This DEA agent hated to be rude, but to do a proper search, his suspects needed to be nude.



Black police shirt with DEA patches. Includes DEA hat and "Agent Phil Mypockets" nameplate. (Baton, belt, glasses, and pants not included) (3 Piece Set)

Style 9867
"DEA Agent Phil Mypockets"
M, L, XL, XXL



She was more than willing to do her duty, but no one wanted to go to war with this elegant beauty.



Navy blue stretch knit military dress with authentic looking patches, combat ribbon and gold military buttons. Includes hat, belt and commendation medal.
(Cigar, gloves and jewelry not included)
(4 Piece Set)

Style 9894
"Take Charge Marge"
S, M, L, XL



This elite agent loves finding hardened criminals.

Style 9443
"Special Ops" (Woman's)
S, M, L, XL

Sleek and sexy black jumpsuit with buckle front detailing and "Special Operations" patch. Includes bullet belt.
(2 piece set)



This Special Ops cop loves to play rough.

Style 9444
"Special Ops" (Men's)
M, L, XL, XXL
Black heavy duty vest has bullet holders, utility pockets, SWAT Police back screen print and special SWAT patch. Includes dickey with face mask and arm band with embroidered "Special Ops" patch.
(Pants, handcuffs, baton, helmet and sunglasses not included.)
(3 piece set)

(Shown With)
Style 9529
"Special Ops Helmet"
O/S



High SEAS

Styles 10282 & 10285



Style 10285
"Boat Rockin' Babe"
S, M, L, XL

Charming sailor dress with anchor buttons and sailor collar with sequin anchor appliqué. Includes sailor hat, belt, cuffs and stocking topper bows with sequin anchors.
(Thigh highs and petticoat not included)
(5 Piece Set)

(Shown With)
Style 10366
"Fishnet Thigh Highs with Back Seam"
O/S, O/S Queen

Style 4582
"Ursula Petticoat"
O/S

So Nauti!





Climb aboard his big ship for an unforgettable trip!

Style 10282

“Ship Happens”

M, L, XL, XXL

Sailor shirt with official looking combat ribbon and patches. Includes sailor hat.
(Pants not included)
(2 Piece Set).

(Shown With)
Style 6379
“Men’s Basic Pant”
M, L, XL, XXL



Style 10284

"All Aboard"

S, M, L, XL

Adorable retro-styled dress with sailor collar, sequin anchors and a full circle skirt. Sailor hat included. (Earrings not included) (2 Piece Set)

Always cruisin' for a little fun!





When this cutie sets sail, many hearts she will steal.



Sailor dress with underwire foam cups, attached sailor collar, hidden detachable halter shoulder strap, and attached/adjustable garters with silver metal anchors. Includes belt with sequin anchor appliqués, sailor hat, and wrist cuffs. (Earrings and thigh highs not included) (5 Piece Set)

(Shown With) Style 10366 "Plain Top Fishnet Thigh Highs" O/S, O/S Queen

Style 9861

"Sailor's Delight"

S, M, L, XL



This adorable sailor always makes a splash.

Style 9439

"Shore Thing"

S, M, L, XL

1X/2X, 3X/4X

Navy satin dress with waist sash belt, sequin appliqués along the hemline and an attached red petticoat. Includes sailor hat and cuffs. (Earrings not included) (4 piece Set)



This sailor sweetie drives Longshoremen crazy!

Style 5985

"Makin' Waves"

S, M, L, XL

Stretch knit dress with lightly padded underwire cups, contrast navy piping and gold foil bows on neckline and gold foil bow hem trim with printed anchor accents. Includes matching long sleeved shrug with foil star detail and sailor hat with anchor and gold foil bow. (3 piece set)



Everyone was after this pirate cutie's booty.



Style 10313

“Wild Wench”

S, M, L, XL

Flirty off the shoulder pirate wench dress with lace-up detail and jagged edge hem. Includes pirate hat and sarong with skull print. (Sword not included)
(3 Piece Set)

This pirate didn't think it was dumb, to start each day with a ho ho ho and a bottle of rum.



Velvet coat with gold trim and pirate buttons. Includes pirate hat, waist sash, white ruffled dickey, and eye patch. (Shirt, pants, and sword not included) (5 Piece Set)

(Shown With) Style 6379 “Men’s Basic Pant”
M, L, XL, XXL

Style 10312

“Sea Savvy Pirate”

M, L, XL, XXL

When out to sea looking for treasure, this pirate has brought many a wench pleasure.



Style 9872

“Sea Worthy Pirate” (Men’s)
M, L, XL, XXL

Brown distressed leather look vest with gold detailing. Includes pirate’s tunic top, distressed leather look head wrap, striped waist sash and belt. (Pants and sword not included) (5 Piece Set)

(Shown With) Style 6379 “Men’s Basic Pant”
M, L, XL, XXL

This sexy pirate is quite a cutie. Everyone’s after her fabulous booty.



Style 9871

“Sea Worthy Pirate” (Women’s)
S, M, L, XL

Brown distressed leather look vest with attached peasant top and gold trim detailing. Includes black leather look pirate’s hat and shiny knit capri pants with cuffs. (Earrings and sword not included) (3 Piece Set)

Once upon A TIME

Styles 9908, 10293 & 10297



Style 10293

"Alice"

S, M, L, XL

Lovely Alice dress with layered tulle overskirt, velvet bodice and sheer sleeves. Includes apron and headband with bow. (3 Piece Set)

This adventurous girl would like to give a mad tea party a whirl.





*Who is to say who is sane, you see?
He's raving mad, but having more fun
than me!*

Style 10297

"Hatter Madness"

M, L, XL, XXL

Brown velvet jacket with uneven pockets and purple trim. Includes diamond print vest with polka dot buttons and attached purple dickey with large bow tie, and oversized velvet hat. (Wig and pants not included)
(3 Piece Set)

(Shown With)
Style 10347
"Men's Ripped Pant"
M, L, XL, XXL

Style 9908
"Queen of Hearts"
S, M, L, XL
Magnificent black velvet gown with sequin embellished neckline piece, heart shaped appliques, attached petticoat, and attached red satin cape with heart shaped collar. Includes jeweled crown and choker. (Gloves, jewelry, thigh highs, stocking bow pin, and scepter not included) (3 Piece Set)

(Shown With)
Style 5218
"Luna Glove"
O/S

Style 4582
"Ursula Petticoat"
O/S

Style 10342
"Bow Top Stockings"
O/S, O/S Queen



Who's been painting
my roses red?
All I can say is,
"Off with her head!"

The fairytale does tell, if
your grandma suddenly has
a deep voice, big eyes and
mouth, you may want to run
like hell.



Style 9476
"Beyond Wonderland"
S, M, L, XL

Blue satin dress with
attached apron with
large bow in the back,
ric-rac trim, sequin
appliques and jeweled
heart buttons. Includes
headband with bow
and fingerless gloves.
(Thigh highs
not included)
(3 piece set)

Come join Alice on a little
trip, through the rabbit
hole she might just slip.



Style 9477
"Little Red"
S, M, L, XL
1X/2X, 3X/4X

Beautifully detailed fairytale dress includes underwire foam cups with pleated ruffles, embroidered heart trim, and lace-trimmed apron. Includes full length hooded satin cape. (Basket, thigh highs, additional petticoat, and satin gloves not included) (2 Piece Set)

(Shown With) Style 10342 "Bow Top Stockings"
O/S, O/S Queen





This bed-hopping beauty went through life without cares, until she had a little tangle with three angry bears.

Style 9895

"Goldilocks"

S, M, L, XL

1X/2X, 3X/4X

Adorable fairytale dress in black velvet with gold satin ruffles has unique sequined daisy trim along its lace-up bodice and a built-in petticoat. Attached apron has three sequined bear appliques and is framed with black ric-rac.

Includes full-length hooded gold satin cape. (Hair ribbons, gloves, additional petticoat and thigh highs not included) (2 Piece Set)

(Shown With) Style 10342 "Bow Top Stockings" O/S, O/S Queen
(Suggested Accessory) Style 4582 "Ursula Petticoat" O/S



This bear had no dread, when he found a beautiful woman sleeping in his bed.

Style 10296

"Papa Bear"

M, L, XL, XXL

Furry brown velvet tunic with attached hood with ears. Includes bear paw fingerless gloves. (Pants not included) (2 Piece Set)

"Oh grandmother," Red Riding Hood said, "You have more facial hair than grandpa!"



Style 10314
"Red Riding Hood"
S, M, L, XL

Fairytale off the shoulder dress with attached ruffled satin skirt. Includes hooded capelet. (Hair bows, thigh highs, gloves, and basket not included) (2 Piece Set)

(Shown With) Style 10342 "Bow Top Stockings"
O/S, O/S Queen

Who's afraid of the Big Bad Wolf?



Men's red and black check jagged edge tunic with faux fur hood with wolf ears. Includes fingerless gloves. (Pants not included) (2 piece Set)

Style 9493
"Big Bad Wolf"
M, L, XL, XXL



Beauty is in the eyes of the
beer holder.

Style 10306
"Bavarian Babe"
S, M, L, XL

Adorable Bavarian dress
with underwire foam
cups, daisy trim and an
attached apron.
(Hair bow and thigh
highs not included)
(1 Piece Set)

(Shown With)
Style 10342
"Bow Top Stockings"
O/S, O/S Queen

(Suggested Accessory)
Style 4582
"Ursula Petticoat"
O/S

Style 10287

"The Evil Queen"

S, M, L, XL

Simply wicked evil queen dress has sequined bodice with sequin enchanted rose appliqué, high striking collar, and attached rose-printed cape. Includes crown and choker. (Apple, earrings, and thigh highs not included)
(4 Piece Set)

(Shown With)
Style 10342
"Bow Top Stockings"
O/S, O/S Queen

(Suggested Accessory)
Style 4582
"Ursula Petticoat"
O/S

*Mirror, Mirror on the wall,
do you really have to tell it all???*





*An apple a day may not always be best,
for this princess it meant way too much rest.*

Style 10319

"Happily Ever After"

S, M, L, XL

1X/2X, 3X/4X

Glistening fairytale dress has rich blue velvet bodice with rose embroidered underwire foam cups and full shimmering metallic overskirt. Includes bow headband and cape with attached collar. (Apple and gloves not included)
(3 Piece Set)



(Shown With)
Style 5218
"Luna Glove"
O/S



Style 9452

"Fairy-licious"

S, M, L, XL

Holographic print stretch knit dress has corset-styled bodice, green rhinestone encrusted neckline appliqué and attached sparkly tutu bottom. Includes wand and fairy wings. (Earrings not included) (3 piece set)



She's the beautiful fairy that's just delicious. She goes by the name of Fairy-licious.



Style 7537

"Pretty Pan"

S, M, L, XL

Stretch satin dress with plunging neckline and jagged edge adjustable length drawstring hemline. Includes belt, sword and matching hat. (4 piece set)



She'll fly through the sky just to catch your eye!



It's all fun and games until someone loses a hand.



Style 10299

"Captain Hook"

M, L, XL, XXL

Red velvet jacket with gold trim and lace ruffled sleeve detailing. Includes velvet pirate hat, ruffled dickey, mitt with hook, and belt. (Pants, wig, gloves, and sword not included) (5 Piece Set)

(Shown With) Style 6379 "Men's Basic Pant"
M, L, XL, XXL



This busy Sultan has many wives it's true, but I'm sure he could make room in his harem for you.

Exotic purple satin tunic with attached velvet vest is trimmed with gold tassel braid. Includes gold sash, satin harem pants and jeweled turban. (Shoe covers and sword not included)
(4 Piece Set)

Style 10298

"The Sultan"

M, L, XL, XXL



This sexy hottie has a harem of men and won't share 'em!

Chiffon peasant styled top with gold foil paisley print trimmed with gold sequin band. Matching genie pants with gold sequin waistband have attached stretch shorts inside. Includes scarf and head piece.
(4 piece set)



This Genie in a bottle wants to make your wishes come true, so close your eyes and watch what she can do!

Turquoise genie top has gold foil moon & star print, sequin trim and a chiffon midriff. Genie pants have side slits, gold sequin waist appliqué, gold moon & star print panel, and attached shorts. Includes sequin-trimmed sleeves and a jeweled headpiece with veil.
(4 piece set)



Style 9490

"Genie in a Bottle"

S, M, L, XL

You might think this beauty is all good, until she goes out to rob your hood.



Style 9876

“Robin Hood”
S, M, L, XL

Rich green velvet corset styled dress with gold lace-up trim detailing and attached petticoat. Includes matching satin cape, hat with ostrich feather and removable/adjustable shoulder straps. (Hair ties and bow not included)
(4 Piece Set)

Looking for a little fun? This huntsman has got the right equipment to get the job done.



Distressed brown leather look tunic with attached sage green sleeves and hood. Includes belt with loop for hunting knife, wrist gauntlets, utility strap for holding knives and arrows, and two faux knives.
(Bow, arrows, hunting knife, and pants not included)
(5 Piece Set)

(Shown With) Style 6379 “Men’s Basic Pant”
M, L, XL, XXL

Style 9907

“The Huntsman”
M, L, XL, XXL



This beautiful Ice Queen seemed hot to me, but the truth was she was as cold as can be.



Blue stretch velvet gown with silver sparkle snowflake print, attached back cape sections, elaborate silver sequin neckline appliqué and high side slit with sequin trim. Includes crown. (Jewelry, hair bow, and snowflake scepter not included)
(2 Piece Set)

Style 9897
"The Ice Queen"
S, M, L, XL



Finding a princess can be hard to do, not every fair maiden can fit in that glass shoe!

Tunic with gold embroidered royal crest, gold fringed epaulets and matching belt. Includes elastic waist pants with gold trim.
(3 piece Set)

Style 9474
"Fairytale Prince"
M, L, XL, XXL



Every princess knows they must be pretty and clever, or finding a prince might just take forever!

Blue satin dress with jeweled neckline trim, high-low hemline, sheer puff sleeves and sparkly print skirt. Includes crown. (Jewelry, satin gloves and thigh highs not included)
(2 piece set)

Style 9473
"Having a Ball"
S, M, L, XL
1X/2X, 3X/4X



(Shown With)
Style 7030
"Sheer Thigh Highs"
O/S, O/S Queen



Plot HAUNTS



Styles 10259 & 10260



*Madly in love this vampire might
make you feel, but you
better watch out, you might be
his next meal.*

Style 10260
"Bloody Handsome"
M, L, XL, XXL

Black velvet coat with embossed scroll design has an attached vampire collar. Includes printed satin vest with attached shirt front with ruffled collar.
(Pants and gloves not included)
(2 Piece Set)



*Many men are dying to be with this
beauty.*



Exquisite gown with velvet and satin bodice has sequin appliqué and full layered satin and tulle skirt. Includes removable/adjustable vampire collar. (Necklace, earrings, and gloves not included) (2 Piece Set)

(Shown With) Style 10341 "Midnight Madness Gloves" O/S
Style 10369 "Bloody Beautiful Choker" O/S

Style 10259
"Bloody Beautiful"
S, M, L, XL

1X/2X, 3X/4X

Style 10280

“Fly By Night Vamp”

S, M, L, XL

1X/2X, 3X/4X

Creep-a-licious red metallic dress with black neckline appliqué, full skirt with scalloped hemline and an attached vampire collar and cape. Includes vampire choker with red rhinestone vampire bite. (Gloves, petticoat, earrings, and pantyhose not included) (2 Piece Set)



(Shown With)
Style 0257H
“Fishnet Pantyhose with
Solid Foot Bottom”
O/S, O/S Queen

Style 4582
“Ursula Petticoat”
O/S

Style 10341
“Midnight Madness
Gloves”
O/S

*You might not realize this beauty's a
fright, until she grabs your neck and
takes a bite!*



Although this beauty has nothing but
love to give, if she points at you, you
might not live!

Style 10258

"Glam Reaper"

S, M, L, XL

Sequin-trimmed black
velvet gown with foam
underwire cups and
sequin skull appliqué has
pointed hood and side slit.
(Scythe and jewelry not
included)
(1 Piece Set)



Style 10266

“Every Witch Way”

S, M, L, XL

Black velvet jagged edge dress with long tattered sleeves. Includes witch's hat and belt. (Stockings, broom, and gloves not included) (3 Piece Set)

(Shown With)
Style 10341
“Midnight Madness
Gloves”
O/S

Style 0257H
“Fishnet Pantyhose with
Solid Foot Bottom”
O/S, O/S Queen

*You might think this witch's love is true,
until she casts a spell on you.*





*Most say it wouldn't be hell,
to be under this witch's spell.*

Style 10272

"Spellbound"

S, M, L, XL

Spook-tacular witch's gown with stretch black velvet sparkle bodice and full ruffled tulle attached skirt. Includes witch hat. (Choker, broom, and gloves not included) (2 Piece Set)

(Shown With)
Style 10341
"Midnight Madness
Gloves"
O/S

Style 10370
"Spider Choker"
O/S

Style 10279

“Love My Mummy”

S, M, L, XL

Tattered dress with
ripped sleeves and sheer
mesh jagged hemline.
Includes hair bows,
choker, and 2 long strips
of fabric ties.
(Stockings not included)
(4 Piece Set)

(Shown With)
Style 0257H
“Fishnet Pantyhose with
Solid Foot Bottom”
O/S, O/S Queen

*This lonely mummy wants to roam,
out of the graveyard and into your
home.*



Never underestimate the power of a
great anti-aging cream.

Style 10262
"Drop Dead Gorgeous"
S, M, L, XL

This versatile dress can
be worn with or
without the included
Egyptian accessories.
Includes tattered dress,
Egyptian sequin collar
with attached cape,
sequin Egyptian belt,
and headpiece.
(4 Piece Set)

Versatile



Everywhere this devil would dwell, he loved to raise a little hell.



Style 10271
"Hell of a Guy"
M, L, XL, XXL

Red satin cape with collar and large pentagram screen print on the back. Includes Devil mask, and red velvet vest with with pentagram buttons.
(Pants not included)
(3 piece set)

Sorority life can be such fun, 'til the devil shows up and you have to run.



Blood splattered sorority top and pleated skirt. Includes knife.
(Thigh highs not included)
(3 piece set)

Style 10270
"Kappa Killer"
S, M, L, XL

Guests at the hotel would often dread, when she pulled out her knife and tried to eat their heads.

"Welcome to the Dreadly", this bellman would say, then try and stab you as you walked away!



Style 10302

"Horror Hotel" (Women's)
S, M, L, XL

Blood-splattered hotel maid's dress with attached apron has a full satin skirt with attached petticoat. Includes headpiece, choker, and nameplate that says "Ivana Stabalot." (Jewelry, gloves, duster, thigh highs and knife not included) (4 piece set)

(Shown With) Style 10342 "Bow Top Stockings"
O/S, O/S Queen

Red Bellman's uniform coat and tails with gold trim. Includes blood splattered gloves, shirt front with tie, cummerbund, hat and nameplate that says "The Dreadly Hotel, Will U. Live." (Pants and cleaver not included) (6 piece set)

Style 10304

"Horror Hotel" (Men's)
M, L, XL, XXL

Style 9901
“Working The Graveyard Shift”
S, M, L, XL

Nurse’s uniform with screen printed splattered blood and ragged sleeves and hemline. Back has bloody handprint and “Mental Ward” screen print. Includes “Mental Ward” headpiece and “Nurse Norma Lee Crazy” nameplate. (Cleaver and stockings not included)
(3 Piece Set)



This zombie nurse will take away your headache pain; she will bite off your head and eat your brain.



Style 9902
“Dr. Hugh B. Dead”
M, L, XL, XXL

Doctor’s white lab coat with screen printed blood splatter and medical logos. Back has bloody handprint and “Mental Ward” screen print. Includes wig, glasses and stick-on mustache. (Pants, stethoscope, and chainsaw not included)
(4 Piece Set)



This doctor’s hunger has no bounds; he would rather feast on his patients than make his rounds



By day she sleeps 6 feet deep. By night she does the graveyard creep.



Style 9903
“Ms. Bones”
S, M, L, XL

Exquisite skeleton screen print dress has stretch bodice with attached full-layered tulle and satin skirt. Includes skeleton screen print fingerless gloves. (Hat and jewelry not included)
(2 Piece Set)

(ShownWith) Style 10005 “Ms. Bones Hat”
O/S



He's always out knocking over graveyard stones, hoping to find someone who will jump his bones.

Black velvet jacket with red tattered edges has an attached shirt front with skeleton print. Includes collapsible hat with skull and skeleton fingerless gloves. (Cigar and pants not included) (3 Piece Set)

(ShownWith) Style 10347 "Men's Ripped Pants"
M, L, XL, XXL

Style 9904
"Mr. Bones"
M, L, XL, XXL



She still haunts the graveyard in her wedding dress. Who knew her wedding day would have been such a mess?

Style 9945
"Bride of Doom"
S, M, L, XL
Gray tattered gown with skeletal ribcage print and full layered tulle overskirt. Roses adorn the neckline and dropped waistline. Includes tattered gray veil headband with roses and choker with skull. (Thigh highs not included) (3 Piece Set)

(Shown With)
Style 7031
"Sheer Thigh High with Back Seam"
O/S



This troubled groom didn't see, how long death 'til you part could actually be.

Style 9946
"Groom of Doom"
M, L, XL, XXL
Gray tattered jacket with spider web mesh and skull buttons. Includes collapsible hat and shirt front dickey with bow tie. (Pants not included) (3 Piece Set)

(Shown With)
Style 10347
"Men's Ripped Pants"
M, L, XL, XXL



Style 9422
"Killing Me Softly"
S, M, L, XL
1X/2X, 3X/4X

Black and red velvet Victorian styled dress with high-low hemline has an exquisite sequined, embroidered neckline piece, vampire collar and sheer black chiffon sleeves. (Jewelry and thigh highs not included) (1 piece set)



(Shown With)
Style 10366
"Fishnet Thigh Highs with Back Seam"
O/S, O/S Queen



You might think this beauty is quite a sight, until you try to kiss her, and she gives you a bite.

Although this vamp is looking sweet, better stay back, or you'll be her next treat.



Style 8177
"Just One Bite"
M, L, XL, XXL

Black velvet vampire waistcoat with contrast satin lapels and cuffs. Front lapels have gothic embroidered satin appliqué crosses with rhinestones. Coat back has embroidered fiber optic light-up cross. Includes a white satin ruffle dickie, instructions, hidden pocket for on/off switch and batteries. (Shirt and pants not included) (2 piece set)



This sexy vampire can be such a fright, when he pulls you close and takes a bite!



Style 9878
"To Die Over"
S, M, L, XL

Exquisite corset styled dress with high-low hemline, metallic mesh ruffled skirt, and sequin neckline detail. Includes detachable cape with vampire collar. (Gloves, jewelry, and pantyhose not included) (2 Piece Set)

Mythical MAGIC



Styles 10256 & 10278

Bringing pleasure to all she meets,
this ravishing goddess is a
heavenly treat.



Style 10278
"It's Greek to Me"
S, M, L, XL

Heavenly asymmetrical gown with attached gold metal belt,
and attached chiffon sashes. Includes gold leaf headpiece.
(Jewelry not included)
(2 Piece Set)

You better not tell this god to take
a hike, or lighting just might
strike.



This versatile costume can be worn with or without the included
shirt. Includes gold satin cape, top, paneled skirt, wrist gauntlets
and gold leaf headpiece.
(Thunderbolt not included)
(5 Piece Set)

Style 10256
"Zeus"
M, L, XL, XXL

Convertible



*For this god's love many women
would plead, but he turned out to
be just a dog indeed.*

*All men wanted this
Egyptian Beauty, but
she sent them away,
she was just so snooty.*



Style 10251

"Anubis, God of
the Underworld"
M, L, XL, XXL

This versatile costume can be worn with or without the included shirt.
Includes Anubis mask, Egyptian collar with attached cape, shendyt
skirt and armbands.
(Gloves and battle weapon not included)
(5 Piece Set)

Rich metallic gold gown with attached pleated gold cape and
removable front panel has exquisite Venetian lace appliques.
Includes sequin and rhinestone headpiece.
(Jewelry not included)
(2 Piece Set)

Style 10250

"Goddess of Egypt"
S, M, L, XL

Style 9875
“Goddess of Delight”
S, M, L, XL

Exquisite white chiffon dress with gold fleck print has unique high-low hemline and attached gold sashes. Includes gold leaf headpiece and armbands. (Jewelry not included) (3 Piece Set)



She’s an ethereal beauty who’s come from above, looking for the perfect man to love.

Style 8860
“He’s a God”
M, L, XL, XXL

White tunic with gold satin attached cape and matching trim. Gold leaf headpiece, removable belt and wrist gauntlets included. (4 piece set)



Every inch of this mighty God is simply heavenly!



He is handsome and powerful and the God of the Sea; in his strong arms is where women want to be.

Style 9854
“Poseidon”
M, L, XL, XXL

Tunic with attached sash has gold trident detailing. Includes crown, belt, and wrist gauntlets. (Trident not included) (4 Piece Set)



This exquisite sea creature had such glam, she created a tsunami wherever she swam!

Turquoise gown with shell shaped underwire foam cups, sheer peplum and sequin shell appliqué detailing. Includes armbands with trailing chiffon and removable, adjustable shoulder straps. (Headpiece not included) (3 Piece Set)

(Shown With) Style 9515 "Shimmer Rhinestone Headpiece"
O/S

Style 9853
"Sea Goddess"
S, M, L, XL



This beautiful unicorn you might want to chase, if you catch her she'll take you to a magical place.

Multi-colored shimmering metallic dress with silver sequin trim, full length attached sheer metallic mesh pieced skirt, and removable/adjustable shoulder straps. Includes removable tail and unicorn headband. (Jewelry not included) (4 Piece Set)

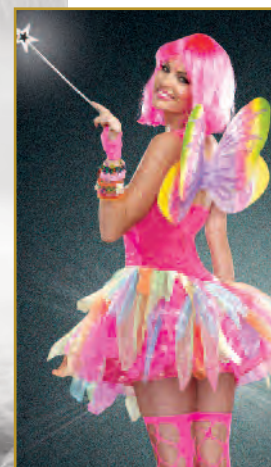


Style 9566
"Rainbow Fairy"
S, M, L, XL

Psychedelic fairy dress has neon pink and green sequin fabric with multi-colored attached sparkly tutu. Includes fairy wings and removable/adjustable shoulder straps. (Wand, wig, fingerless gloves, jewelry, thigh highs and boot covers not included) (3 piece set)



When this fairy comes to you, psychedelic dreams and wishes will come true.



Foreign AFFAIRS

Style 10324





Style 10324

“Can-Can Cutie”

S, M, L, XL

1X/2X, 3X/4X

Beautiful brightly colored multi-ruffled fringed dress with sequin detailing. Includes ostrich feather hair clip and garter. (Jewelry, thigh highs, and gloves not included) (3 Piece Set)



(Shown With)

Style 10346

“Burlesque Thigh High Stockings”

O/S



CABARET

*Ask her to dance if you think you
can, can...*





*Entertaining male customers was
certainly her thing, such joy and
pleasure she would bring.*

Style 10309

"Golden Dragon Geisha"

S, M, L, XL

Ornate red geisha gown
with side slits has
exquisite gold sequin
dragon appliqué. Includes
choker, chopsticks and
floral headpiece.
(Fan not included)
(4 Piece Set)

Style 10311

“Spanish Dancer”

S, M, L, XL

1X/2X, 3X/4X

Flirty black velvet asymmetrical dress with off the shoulder neckline and ruffles. Includes rose hair clip.

(Jewelry, fan, gloves, and pantyhose not included)

(2 Piece Set)



(Shown With)

Style 5218

“Luna Glove”

O/S

Style 7034

“Fishnet Pantyhose”

O/S



This Spanish dancer was such a flirt, when she spun around, she lifted up her skirt!





At Oktoberfest she couldn't help but think, that beer might be more than just a breakfast drink!

Style 10301

"Beerfest"

S, M, L, XL

Adorable off the shoulder dress with sequin trim and full satin skirt. Includes pink ruffled apron. (Hair ties, petticoat, beer mug, and thigh highs not included) (2 Piece Set)

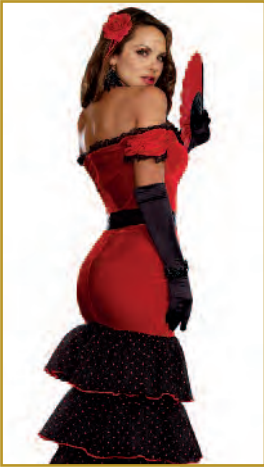
(ShownWith)
Style 10342
"Bow Top Stockings"
O/S, O/S Queen

Style 4582
"Ursula Petticoat"
O/S

Style 9967
“Flamenco”
S, M, L, XL

Stretch velvet off the shoulder body-skimming gown with flocked polka dot sheer ruffles and open front slit. Includes rose hair accessory, belt and fan.
(Gloves and jewelry not included)
(4 Piece Set)

(Shown With)
Style 5218
“Luna Glove”
O/S



The men in the audience knew they didn't stand a chance, when this Spanish beauty did her dance.



This sexy Scottie wants to tilt your kilt.

Style 9499
“Scottie Hottie”
S, M, L, XL

Charming Scottie dress has velvet vest with hook and eye front detail with attached woven tartan plaid skirt. Includes hat, sleeves, and stocking topper bows.
(Thigh highs not included)
(4 piece set)

(Shown With)
Style 7031
“Sheer Thigh High with Back Seam”
O/S



Style 4550
“Eskimo Cutie”
XS, S, M, L

Zipper front stretch crushed velvet dress with faux fur trimmed hood with pom pom ties. Includes mittens, faux fur trimmed boot covers and faux chocolate popsicle.
(Petticoat not included)
(4 piece set)

This super sexy Eskimo will melt your popsicle.



Be glad for this hunky Scottish lad!

Style 5084
“Hot Scottie”
M, L, XL, XXL

Plaid pleated kilt with attached sash. Includes matching hat, belt with bag and two sock garters with matching plaid ties.
(Socks and shirt not included)
(5 piece set)



Seasonal SWEETIES



Style 10326

Style 10326
"Mardi Gras"
S, M, L, XL

Purple sequined foam bra and adjustable length metallic shorts with coin fringe. Includes eye mask, bow tie arm band and ruffled sheer skirt. (Jewelry not included)
(5 Piece Set)



This Mardi Gras girl was such a tease, she screamed, "Throw me beads for a peek at these!"





Always after me lucky charms!

Style 10328

“Irish U Were Naked
Leprechaun”

M, L, XL, XXL

Shamrock vest with
attached dickey and bow
tie. Includes “Irish You
Were Naked” pin, large
velvet leprechaun hat and
shoe buckle clips.
(Pants not included)
(4 Piece Set)

Style 10325
“Candy Cane Cutie”
S, M, L, XL

Velvet candy cane striped dress with full satin skirt. Includes velvet shrug, Santa hat, belt and stocking topper bow pins with candy appliques. (Candy cane and thigh highs not included) (5 Piece Set)

(Shown With)
Style 7031
“Sheer Thigh Highs with
Back Seam”
O/S

*If you're craving something sweet,
she's the perfect holiday treat!*





*Sexy Santa is here for you.
She wants to make all your
wishes come true!*



Red stretch crush velvet dress with faux fur trim at neckline and hem. Includes matching long sleeve shrug, belt, jingle bell stocking toppers and Santa's hat. (Thigh highs and gloves not included)
(5 piece set)

(Shown With) Style 7031 "Sheer Thigh Highs with Back Seam"
O/S

Style 8870
"Santa Baby"
S, M, L, XL



*She's always naughty
on hot holiday nights!*

Style 4017
"Santa's Sweetie"
S, M, L
Stretch velvet dress
with faux fur trim.
Includes hat, necklace,
belt and gauntlets.
(6 piece set)



*This sexy belle
wants to
take you on a
snow-melting
sleigh ride.*

Style 4552
"Sleigh Belle"
XS, S, M, L
Zipper front crushed
stretch velvet dress
with faux fur trim
hood with pom pom
ties and attached tulle
petticoat. (Additional
petticoat not included)
(1 piece set)

Style 8888
“Lady Luck”
S, M, L, XL

Stretch knit corset style brocade bodice dress with adjustable front lace-up panel, satin skirt and attached apron with shamrock details. Includes matching mini top hat on headband, hair ribbons and leg garter. (Beer mug, thigh highs and petticoat not included)
(4 piece set)

(Shown With)
Style 7031
“Sheer Thigh Highs with Back Seam”
O/S



Style 5199
“Spank Me I’m Irish”
S, M, L

Stretch knit strapless dress with attached belt, felt clover detail skirt and puff arm sleeves. Includes hat, pot of gold bag and riding crop. (Thigh highs not included)
(6 piece set)

(Shown With)
Style 7031
“Sheer Thigh Highs with Back Seam”
O/S



This Mardi Gras Maven is looking sweet, when she throws her beads on Bourbon Street.

Style 8878
“Mardi Gras Maven”
S, M, L, XL

Green and purple foil print dress with removable/adjustable shoulder straps, multi layered ruffled skirt with gold sequin trim. Includes shrug with sequin trim. (Mask and jewelry not included)
(3 piece set)



Style 6540
“Miss Liberty”
S, M, L, XL

Stretch knit faux wrap dress with side shirring detail. Includes headpiece and light-up torch with battery.
(3 piece set)



Plus COSTUMES



Style 10290X

“Exquisite Cleopatra”

S, M, L, XL

1X/2X, 3X/4X

Exquisite velvet gown with Egyptian pattern has front slits and gold trim detailing. Includes Egyptian collar and belt. (Jewelry and headpiece not included)
(3 Piece Set)

Style 10289X

“Medieval Fair Wench”

S, M, L, XL

1X/2X, 3X/4X

Flirty burgundy velvet and sage green satin wench dress with floral trim and lace-up front. Includes rose headpiece. (2 Piece Set)



Style 9842X

“Medieval Enchantress”

S, M, L, XL

1X/2X, 3X/4X

Exquisite embossed burgundy velvet gown with gold sequin neckline piece and sheer sleeves. Includes gold sequin medieval belt and headpiece. (Jewelry not included) (3 Piece Set)



Style 10273X

“Deadly Warrior”

S, M, L, XL

1X/2X, 3X/4X

Gold metallic trimmed warrior dress with embroidered crest, shoulder pads, and attached hood. Includes wrist gauntlets. (Sword not included) (2 Piece Set)



Style 9824X

“The King Slayer”

S, M, L, XL

1X/2X, 3X/4X

Shimmering blue and black velvet dress with silver sequin detailing and embroidered crest has attached velvet cape. Includes wrist gauntlets and rhinestone headpiece. (Sword not included) (3 Piece Set)





Groovy 60's print dress with matching headband, sunglasses and peace sign belt.
(Earrings not included)
(4 Piece Set)

Style 10230X
"Love-Fest"
S, M, L, XL
1X/2X, 3X/4X



Style 9975X
"Diner Doll"
S, M, L, XL
1X/2X, 3X/4X
50's styled red and white striped dress with heart buttons and screen printed "Betty" nameplate. Includes hat with heart button, lace edged apron, scarf and "Hot Buns" pin.
(Petticoat, earrings, tray, food and socks not included)
(5 Piece Set)



Style 9859X
"Yeah Baby!"
S, M, L, XL
1X/2X, 3X/4X
Black and white mod dress with daisy trim straps. Includes headband and boot covers.
(Jewelry not included)
(3 Piece Set)

Style 10267X

“Ain’t She Sweet”

S, M, L, XL

1X/2X, 3X/4X

Dazzling red sequin dress with rose trim and sequin fringe. Includes sequin headpiece with rose appliqué. (Gloves, jewelry, boa and cigarette holder not included)
(2 Piece Set)



Style 8812X

“Dames Like Us”

S, M, L, XL

1X/2X, 3X/4X

20’s style dress with reversible black/red dangling paillettes and black beaded neckline. Stretch sequin headpiece with ostrich feather included. (Jewelry, boa, cigarette holder, gloves and pantyhose not included)
(2 piece set)



Style 10210X

“Downton Doll”

S, M, L, XL

1X/2X, 3X/4X

Exquisite midnight blue embossed stretch velvet dress with jeweled neckline and sequin fringe trim. Includes jeweled headpiece with ostrich feather. (Jewelry, boa, cigarette holder and gloves not included)
(2 Piece Set)



Style 9837X

“Sophisticated Lady”

S, M, L, XL

1X/2X, 3X/4X

Burgundy velvet dress with sequin scroll design has an intricately embroidered gold neckline and hemline trim with sequin fringe. Includes gold sequin headpiece with ostrich feather. (Gloves, boa, jewelry and cigarette holder not included)
(2 Piece Set)



Style 9417X

“Keep It Clean”

S, M, L, XL

1X/2X, 3X/4X

Black stretch velvet vintage styled dress with ivory and gold embroidered detailing. Includes embroidered apron, headpiece and choker.
(Feather duster not included)
(4 piece set)



Style 10218X

“French Kisses”

S, M, L, XL

1X/2X, 3X/4X

Adorable French maid dress with velvet bodice, venetian lace appliqué, and full satin skirt with attached petticoat. Includes lacy head piece and choker.
(Fingerless gloves, duster, thigh highs and stocking bow toppers not included)
(3 Piece Set)



(Shown With)
Style 10366X
“Fishnet Thigh Highs with Back Seam”
O/S, O/S Queen

Style 8211X

“Maid To Order”

S, M, L, XL

1X/2X, 3X/4X

Ruffled pinafore apron with vintage Parisian print of polka dots and attached to black knit dress with sheer sleeves and large back bow. Includes removable/adjustable garters with bows, headpiece and feather duster.
(Thigh highs not included)
(4 piece set)



(Suggested Accessory)
Style 10366X
“Fishnet Thigh Highs with Back Seam”
O/S, O/S Queen

Style 9839X

“Deadly Dames”

S, M, L, XL

1X/2X, 3X/4X

Black and white pinstripe knee-length knit dress with attached carnation and tie with dollar sign. Includes gangster hat and arm garter.
(Cigar and money not included)
(3 Piece Set)



Style 9439X

“Shore Thing”

S, M, L, XL

1X/2X, 3X/4X

Navy satin dress with waist sash belt, sequin appliqués along the hemline and an attached red petticoat. Includes sailor hat and cuffs. (Earrings not included) (4 Piece Set)



Style 10277X

“Loving Care Nurse”

S, M, L, XL

1X/2X, 3X/4X

Adorable nurse dress with built-in apron styling and heart buttons. Includes nurse hat and nameplate. (Stethoscope, thigh highs, and stocking topper bows not included) (3 Piece Set)

(Shown With)
Style 10366X
“Fishnet Thigh Highs with Back Seam”
O/S, O/S Queen



Style 9964X

“Night Nurse”

S, M, L, XL

1X/2X, 3X/4X

Retro-styled white knit over-the-knee length nurse dress with red button front. Includes nurse hat, belt, capelet and “Nurse Marian A. Docta” nameplate. (Earrings not included) (5 Piece Set)



Style 10245X

“Double Duty Cutie”

S, M, L, XL

1X/2X, 3X/4X

This versatile costume can be worn as an Army nurse or soldier. Army dress with underwire foam cups and star detailing. Includes Army hat, nurse hat and apron. (Stethoscope and pantyhose not included) (4 Piece Set)

(Shown With)
Style 0257HX
“Fishnet Pantyhose with Solid Foot Bottom”
O/S, O/S Queen



Style 8816X

"Dirty Cop Officer
Anita Bribe"

S, M, L, XL

1X/2X, 3X/4X

Black bengaline stretch knit dress with belt and police patches on shoulders. Costume includes police hat with badge pin, "Officer Anita Bribe" nameplate and removable police badge. (Sunglasses, handcuffs, fingerless gloves, pantyhose and baton not included) (5 piece set)

(Suggested Accessory)
Style 0257HX
"Fishnet Pantyhose with
Solid Foot Bottom"
O/S, O/S Queen



Style 9918X

"Service with a Smile"

S, M, L, XL

1X/2X, 3X/4X

Black stretch knit dress with lace-up neckline, gold trim and detailing. Includes "Mile High Captain" pin, and pilot's hat. (Earrings not included) (3 Piece Set)



Style 9505X

"Locked Up!"

S, M, L, XL

1X/2X, 3X/4X

Sexy stretch knit, zip front romper has "Department of Corrections" screen print. Includes belt with removable handcuffs, prison ID pin, booking card, and two-way zip skirt with "Guilty" screen print on the back. (Fingerless gloves not included) (5 piece set)



Convertible



Style 6469X

"Grand Slam"

S, M, L, XL

1X/2X, 3X/4X

Stretch knit snap front dress with sequin embroidered "Grand Slam" appliqué and heat transfer number "10" detail on back. Includes stretch knit short with elastic waist, baseball cap and athletic knee high socks. (Earrings not included) (4 piece set)



Versatile





Style 10324X
 "Can-Can Cutie"
 S, M, L, XL
 1X/2X, 3X/4X

Beautiful brightly colored multi-ruffled fringed dress with sequin detailing. Includes ostrich feather hair clip and garter.
 (Jewelry, thigh highs and gloves not included)
 (3 Piece Set)



Flirty black velvet asymmetrical dress with off the shoulder neckline and ruffles. Includes rose hair clip. (Jewelry, fan, gloves and pantyhose not included) (2 Piece Set)
 (Shown With) Style 0257HX "Fishnet Pantyhose with Solid Foot Bottom"
 O/S, O/S Queen

Style 10311X
 "Spanish Dancer"
 S, M, L, XL
 1X/2X, 3X/4X



Style 10280X

“Fly By Night Vamp”

S, M, L, XL

1X/2X, 3X/4X

Creep-a-licious red metallic dress with black neckline appliqué, full skirt with scalloped hemline and an attached vampire collar and cape. Includes vampire choker with red rhinestone vampire bite. (Gloves, petticoat, earrings, and pantyhose not included) (2 Piece Set)

(Shown With)
Style 0257HX

“Fishnet Pantyhose with
Solid Foot Bottom”
O/S, O/S Queen

Style 9422X

“Killing Me Softly”

S, M, L, XL

1X/2X, 3X/4X

Black and red velvet Victorian styled dress with high-low hemline has an exquisite sequined, embroidered neckline piece, vampire collar and sheer black chiffon sleeves. (Jewelry and pantyhose not included) (1 piece set)

(Shown With)
Style 0257HX

“Fishnet Pantyhose with
Solid Foot Bottom”
O/S, O/S Queen

Exquisite gown with velvet and satin bodice has sequin appliqué and full layered satin and tulle skirt. Includes removable/adjustable vampire collar. (Necklace and gloves not included) (2 Piece Set)

(Shown With) Style 10369 “Bloody Beautiful Choker”
O/S

Style 10259X

“Bloody Beautiful”

S, M, L, XL

1X/2X, 3X/4X



Style 10319X
 "Happily Ever After"
 S, M, L, XL
 1X/2X, 3X/4X

Glistening fairytale dress has rich blue velvet bodice with rose embroidered underwire foam cups and full shimmering metallic overskirt. Includes bow headband and cape with attached collar.
 (Apple and gloves not included)
 (3 Piece Set)



Adorable fairytale dress in black velvet with gold satin ruffles has unique sequined daisy trim along its lace-up bodice and a built-in petticoat. Attached apron has three sequined bear appliques and is framed with black ric-rac. Includes full-length hooded gold satin cape.
 (Hair ribbons and thigh highs not included) (2 Piece Set)
 (Shown With) Style 10342X "Bow Top Stockings"
 O/S, O/S Queen

Style 9895X
 "Goldilocks"
 S, M, L, XL
 1X/2X, 3X/4X



Style 9477X

"Little Red"

S, M, L, XL

1X/2X, 3X/4X

Beautifully detailed fairytale dress includes underwire foam cups with pleated ruffles, embroidered heart trim, and lace-trimmed apron. Includes full length hooded satin cape. (Basket, thigh highs and satin gloves not included) (2 piece Set)

(Shown With) Style 10342X "Bow Top Stockings"
O/S, O/S Queen



Blue satin dress with jeweled neckline trim, high-low hemline, sheer puff sleeves and sparkly print skirt. Includes crown. (Jewelry, satin gloves, petticoat and thigh highs not included) (2 piece set)

(Shown With) Style 10342X "Bow Top Stockings"
O/S, O/S Queen

Style 9473X

"Having a Ball"

S, M, L, XL

1X/2X, 3X/4X

Style 5877X
“Pocahottie”
S, M, L, XL
1X/2X, 3X/4X

Faux suede dress with intricate beaded neckline and layered fringe hem. Includes matching beaded headpiece with feathers.
(2 piece set)



Style 8760X
“Cheetah-luscious”
S, M, L, XL
1X/2X, 3X/4X

Leopard print stretch crush velvet hooded dress with faux fur trim and removable tail. Includes boot covers.
(3 piece set)



Style 8196X
“Reservation Royalty”
S, M, L, XL
1X/2X, 3X/4X

Ultra suede dress has Native American beaded appliqué and fringe detail. Includes a headpiece with feathers and matching beaded appliqué. (Tomahawk not included)
(2 piece set)

Dreamgirl® ACCESSORIES

Imagine the possibilities...

Styles 10337, 10338

Style 10339
“Sailor Top”
S/M, M/L

Navy, red and white sailor top with tie-front detail.
(1 Piece Set)
Pair it with Dreamgirl’s “Sailor Skirt” and cute sailor cap to complete your look!



Complete the Look

Style 10331
“Sailor Skirt”
S/M, M/L

Navy pleated front sailor skirt with anchor buttons.
(1 Piece Set)
Pair it with Dreamgirl’s “Sailor Top” and cute sailor cap to complete your look!



Style 10337
“Justice Top”
S/M, M/L

Red stretch knit top with metallic gold trim and eagle print.
(1 Piece Set)
Pair it with Dreamgirl’s “Super Star Shorts” to complete your superhero look!



Complete the Look

Style 10338
“Super Star Shorts”
S/M, M/L

Navy high waisted stretch knit shorts with printed metallic gold stars.
(1 Piece Set)
Pair it with Dreamgirl’s “Justice Top” to complete your superhero look!

Style 10394

“Harlequin Top”

S/M, M/L

Red and black shiny knit zip-front crop top with adjustable buckle.
(1 Piece Set)
Pair it with Dreamgirl’s “Harlequin Short” to complete your edgy villain look.



Style 10395

“Harlequin Shorts”

S/M, M/L

Striped red and black shiny knit high-waisted shorts.
(1 Piece Set)
Pair it with Dreamgirl’s “Harlequin Top” to complete your edgy villain look.



Style 9987

“Knight Time Top”

S/M, M/L

Silver/black chainmail look, sheer front hooded top with crest.
(Pants not included)
(1 Piece Set)

(Shown With)
Style 6045
“Liquid Legging”
S/M, M/L



Style 9988

“Jailbird Top”

S/M, M/L

Black and white tie front knit top with “County Prison” screen print on the back.
(Shorts not included)
(1 Piece Set)

(Shown With)
Style 9974
“Hi-Waisted Shorts”
S/M, M/L



Style 8358
“Pretty N’ Peasant”
Black, Red, White
S/M, M/ L

Sexy off-the-shoulder knit top with elastic ruffled detail and bow accent. Great starter top for many costume ideas.
(1 piece set)

(Shown With)
Style 9544
“Ruffled Skirt”
S, M, L, XL



Style 9519
“Striped Peasant Top”
S/M, M/L

Red and black striped satin peasant top with sheer sleeves is perfect for creating your own pirate costumes.
(1 piece set)

(Shown With)
Style 9544
“Ruffled Skirt”
S, M, L, XL



Style 8902
“Peasant Top”
S/M, M/L

Black glossy stretch knit peasant top with sheer sleeves that may be worn on or off the shoulder.
(Sword, hat and skirt not included)
(1 piece set)

Style 8947

“Ho Garden Top”

S/M, M/L

Off-the-shoulder stretch knit top with blousy shirring all around and satin bow detail on neckline.
(1 piece set)



Style 8355

“All Tied Up”

Black, White

S/M, M/L

Stretch knit plunging neckline shirt with cap sleeve. Great starter shirt for many costume ideas.
(1 piece set)



Style 9530

“Schoolgirl Top”

S/M, M/L

Plaid stretch knit plunging neckline shirt with cap sleeves. Great starter shirt for many costume ideas.
(1 piece set)



Style 9544
"Ruffled Skirt"
S, M, L, XL

Black satin multi layered ruffled skirt with side zipper can be used to create many different costumes. (1 piece set)

(Shown With)
Style 9519
"Striped Peasant Top"
S/M, M/L



Style 9194
"Burlesque Skirt"
S, M, L, XL

Black high-low hemline satin with organza skirt features multi layered ruffle back detail. (Corset and pantyhose not included) (1 piece set)

(Shown With)
Style 7034
"Fishnet Pantyhose"
O/S

Style 6586
"Schoolgirl/Gangster Skirt"
S, M, L, XL

Pleated reversible plaid Schoolgirl/Gangster pinstripe skirt. (Top not included) (1 piece set)



Style 6045
"Liquid Legging"
S/M, M/L

Glossy stretch knit legging.

(Suggested Accessory)
Style 9987
"Knight Time Top"
S/M, M/L



Style 6379

“Men’s Basic Pant”

Black, White

M, L, XL, XXL

Men’s basic pant with elastic waistband and pockets.



Style 9605

“Men’s Disco Pant”

M, L, XL, XXL

Men’s polyester flare legged disco pants with shiny foil dot at hem. Elastic back waist allows for adjustability.

(Suggested Costume)
Style 9468
“Disco Dude”
M, L, XL, XXL



Style 10347

“Men’s Ripped Pant”

M, L, XL, XXL

Men's tattered black pants with elastic waist band. Perfect for vampire, zombie, pirate, and dead groom costumes.

Style 10336
"Romper Starter"
S/M, M/L

Black romper is a great layering piece for many costumes.

(Suggested Accessory)
Style 10332
"Ninja Kit"
O/S

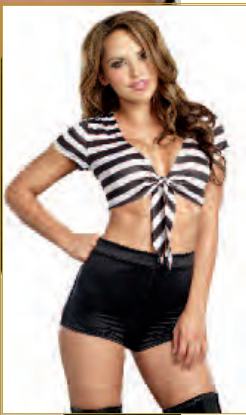


Style 9974
"Hi-Waisted Shorts"
S/M, M/L

High waist stretch knit short.
(1 Piece Set)

(Suggested Accessory)
Style 9988
"Jailbird Top"
S/M, M/L

Style 9997
"S.W.A.T. Mini Kit"
S/M, M/L



Style 9558
"Liquid Unitard"
S/M, M/L

Glossy stretch knit unitard can be used to create many different costumes.



Style 0072
"Basic Unitard"
S/M, M/L
1X/2X, 3X/4X

Cotton/Spandex adjustable strap unitard.



Style 9994
“Liquid Roxie Short”
S/M, M/L

Glossy stretch knit hot short with elastic waist.



Style 4575

“Roxie Hot Short”

Black, Hot Pink, Red, White

S/M, M/L

1X/2X, 3X/4X

Basic stretch knit hot short with elastic waist.

(Hot Pink not available in Plus)
(1 piece set)



Style 8906
“Camo Roxie Short”
S/M, M/L

Stretch knit hot short with elastic waist.
(1 piece set)



Style 7846

“Light-Up Tutu”

Black, White

O/S

Light-up tutu interlaced with fiber optic lights with hidden pocket for on/off switch. Batteries and instructions included.



Style 7007

“Tutu Petticoat”

Black, White

O/S

Multi layered tulle tutu petticoat with elastic band.



Style 8964

“Fairytale Petticoat”

Black, White

O/S

Multi layered sheer mesh petticoat with high-low hemline, satin ribbon detail edging and back bow. (1 piece set)



Style 4582

“Ursula Petticoat”

Black, Red, White

O/S

Multi layer tulle petticoat with three lace ruffles.



Style 8912

“Flapper”

Black, Red

S, M, L, XL

1X/2X, 3X/4X

Full fringe dress with adjustable shoulder straps.
(Jewelry and fishnet pantyhose not included)
(1 Piece Set)



Style 8912X

“Flapper”

Black, Red

S, M, L, XL

1X/2X, 3X/4X

Full fringe dress with adjustable shoulder straps.
(Jewelry and fishnet pantyhose not included)
(1 Piece Set)



Style 5832

“Basic Dress”

Black

S, M, L, XL

Stretch microfiber dress with internal stretch bra. Add costume accessories to this dress to create many different costume options.



Style 8910

“Cave Girl”

S, M, L, XL

One shoulder animal print brushed knit dress.
(Bone barrette not included)
(1 piece set)



Style 9990

“Rock Star Dress”

S, M, L, XL

Neon pink and green dress with zebra print and jagged edged detailing.
(Jewelry, microphone, wig, fishnet tights, and fishnet gloves not included)
(1 Piece Set)



Style 8909

“Blue Gingham Dress”

S, M, L, XL

Blue and white check dress with white chiffon sleeves.
(Thigh highs, hair bows, petticoat, dog and basket not included)
(1 piece set)



Style 9991

“Skeleton Dress”

S, M, L, XL

Black knit skeleton print dress.
(Gloves and headpiece not included)
(1 Piece Set)



(Suggested Accessory)
Style 10003
“Day of the Dead Headpiece”
O/S

Style 5218
“Luna Glove”
O/S



Style 8904
“Gangster Kit”
S/M, M/

Black and white pinstriped halter top with attached carnation, center front buttons and red necktie.
(Jewelry and hat not included)
(2 piece set)



Style 9997
“S.W.A.T. Mini Kit”
S/M, M/L

Cropped stretch knit top with zip front closure and wide attached belt detail.
Includes S.W.A.T. hat.
(2 Piece Set)



Style 8352
“Battalion Babe”
S/M, M/L

Cropped stretch knit vest with zip front closure and wide attached belt detail.
Includes matching military hat.
(Shorts not included)
(2 piece set)



(Suggested Accessory)
Style 8906
“Camo Roxie”
S/M, M/L



Style 10332
“Ninja Kit”
O/S

Open side ninja skirt with sequined waistband with dragon embroidery.
Includes mask.
(Romper, fingerless gloves, and ninja star not included)
(2 Piece Set)

(Shown With)
Style 10336
“Romper Starter”
S/M, M/L



Style 8346
“She's My Hero Kit”
O/S

Superhero star studded cape with tie front closure. Includes gold lamé headband and wristband with star screenprint detail.
(Dress not included)
(3 piece set)



Style 10334

“Genie Headpiece”

O/S

Exotic gold metal jeweled Genie headpiece with coins and attached pink chiffon scarf.



Style 9523

“Shimmering Gold Coin Crown”

O/S

Gold metal crown with coins. (Earrings not included)



Style 9520

“Glittering Rhinestone Headpiece”

O/S

Exquisite rhinestone headpiece has clips on either side for attaching to hair.



Style 9515

“Shimmer Rhinestone Headpiece”

O/S

Golden headpiece with cascading rhinestones and adjustable back.



Style 9516

“Dripping Rubies Headpiece”

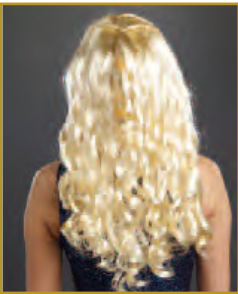
O/S

Magnificent gold headpiece dripping in rubies and gold coins. (Necklace not included)



Style 9898
"Warrior Queen Wig"
O/S

Beautiful long blonde synthetic wig styled with braids and curls.



Style 9542
"Elf Princess Kit"
O/S

Elf Princess kit includes latex elf ears and golden adjustable headpiece. (Veil and necklace not included)
(2 piece set)



Style 9514
"Flapper Headpiece"
O/S

Black stretch sequin headpiece with 1920's appliqué and beading.



Style 9972
"Dazzling Ruby Headpiece"
S, M, L, XL

Gold metal headpiece with dazzling rubies. (Jewelry and dress not included)
(1 Piece Set)



Style 9518
"Snake Crown"
O/S

Beautiful Cleopatra headpiece with snake and golden beads has an adjustable back.



Style 10329
"Pharaoh Headpiece"
O/S

Black velvet and gold
satin ribbon
Egyptian headpiece.
(Cape/collar and
necklace not included)



Style 10303
"Gatsby Hat"
O/S

1920's Gatsby styled
straw boater hat.
(Bowtie not included)

Style 10221
"Battle Beast Helmet"
O/S

Authentic looking
lightweight Roman
gladiator helmet with
feather trim.



Style 9529
"Special Ops Helmet"
O/S

Men's adjustable
tactical helmet
(Face mask and
sunglasses not
included)
(1 piece set)

Style 10220
“Battle-licious Helmet”
O/S

Rugged lightweight Roman gladiator helmet with feather trim.
(Cape not included)



Style 10005
“Ms. Bones Hat”
O/S

Black top hat with skeletons and attached long tulle veil.
(Jewelry not included)
(1 Piece Set)



(Shown With)
Style 9903
“Ms. Bones”
Women’s Costume
S, M, L, XL

Style 9999
“Native American Headdress”
O/S

Unisex Native American full headdress with turquoise, black and white feathers.
(1 Piece Set)



Style 10003
“Day of the Dead Headpiece”
O/S

Headband with roses and black lace veil.
(Jewelry not included)
(1 Piece Set)



(Shown With)
Style 9903
“Ms. Bones”
Women’s Costume
S, M, L, XL



Style 10370
"Spider Choker"
O/S

Velvet choker with silver spider.



Velvet choker with jeweled gothic cross pendant.

Style 10369
"Bloody Beautiful Choker"
O/S

Style 9970
“Galaxy Glasses”
O/S

Silver plastic co-ed
sunglasses.
(1 Piece Set)



Style 8349
“Light-Up Blue Wig”
O/S

Light-up blue wig
interlaced with
innovative fiber optic
lights and hidden
pocket with on/off
switch. Batteries and
instructions included.
(Glasses not included)
(1 piece set)



Style 9971
Galaxy Gun”
O/S

Silver galaxy gun with
lights and sound.
Requires AA batteries.
(Batteries not
included)



Style 9969
“Gauntlet Gloves”
O/S

Silver fingerless
gloves.
(1 Piece set)



Style 10341
“Midnight Madness Gloves”
O/S

Black opera length
fingerless gauntlet
gloves with venice lace
design.



Style 7819
“Dominique Glove”
O/S

Shiny stretch knit
opera length gloves.



Style 5218
“Luna Glove”
Black, Red, White
S, M, L, XL

Stretch satin opera
length gloves.



Style 10342

"Bow Top Stockings"

Black, White

O/S

O/S Queen



Versatile



Style 10340

“Alice Stockings”

O/S

O/S Queen

Black and white striped thigh high stockings.



Style 0217H

“Garter Stocking Pantyhose”

O/S

Sheer pantyhose with opaque knitted garters and thigh high stocking details.

Style 10346

“Burlesque Thigh High Stockings”

O/S

Alluring lace top black sheer thigh high stockings with stripe.



Style 0220H

“Lace-Up Boot Pantyhose”

O/S

Sheer nude pantyhose with black opaque knitted lace-up boot design. Pantyhose can be worn with lace-up detail in the front or in the back.



Style 0257H

“Fishnet Pantyhose with Solid Foot Bottom”

Black, Nude, Red, White

O/S

O/S Queen

Fishnet pantyhose with reinforced toe and sole.



Style 0215H

“Fishnet Raw Top Stockings”

O/S

Raw top diamond net thigh high stockings.



Style 0010H

“Fence Net Pantyhose”

O/S

Fence net pantyhose.



Style 7034

“Fishnet Pantyhose”

O/S

Fishnet pantyhose with back seam.

Style 10367

“Lace Top Fishnet Thigh Highs”

Black, Hot Pink

O/S

Fishnet thigh highs with stay up silicone lace top.



Style 10366

“Fishnet Thigh Highs with Back Seam”

O/S

O/S Queen

Plain top fishnet thigh highs with back seam.

Style 7031

“Sheer Thigh Highs with Back Seam”

Black, Red, White

O/S

Sheer thigh highs with back seam.



Style 7030

“Sheer Thigh Highs”

Black, White

O/S

O/S Queen

Sheer thigh highs with stay up silicone lace top.





Costumes 2016/2017



Shiny knit warrior dress with gold trim and crest detail. Includes headband.
(Sword not included)
(2 Piece Set)

Style A10350
"Courageous Crusader"
S, M, L, XL



Style A8924
"Walk Like an Egyptian"
S, M, L, XL

Egyptian styled dress with gold lamé trim and matching armbands.
(Wig not included)
(2 Piece Set)



Style A8925
"Worship Me"
S, M, L, XL

Gold lamé trimmed goddess dress with matching arm bands.
(Headpiece not included)
(2 Piece Set)

Style A8918
“Native Beauty”
S, M, L, XL
1X/2X, 3X/4X

Ultra suede dress with Native American trim, attached belt and matching headpiece. (Spear not included) (2 Piece Set)



Style A8920
“Geisha”
S, M, L, XL
1X/2X, 3X/4X

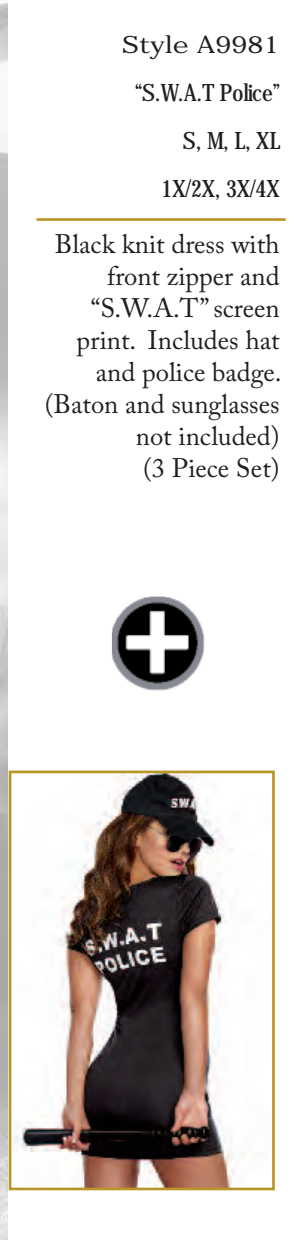
Gold lamé trim geisha dress with obi corset detailing and gold bow. (Chopsticks not included) (1 piece set)



Style A10343
“Wild at Heart”
S, M, L, XL

Ultra suede black dress with contrast Native American trim, fringe and attached belt. Includes headpiece with feather. (Spear not included) (2 Piece Set)





Style A9981
“S.W.A.T Police”
S, M, L, XL
1X/2X, 3X/4X

Black knit dress with front zipper and “S.W.A.T” screen print. Includes hat and police badge. (Baton and sunglasses not included) (3 Piece Set)



Style A9983
“Hitting the Bars”
S, M, L, XL

Black and white striped knit dress with inmate number. Includes hat and “County Prison” belt. (Earrings not included) (3 Piece Set)



Two-tone dress with attached tie detail, Police patch screen print, badge pin, and Police hat. (Baton and sunglasses not included) (3 Piece Set)

Style A0342
“The Dirty Detective”
S, M, L, XL
1X/2X, 3X/4X

Style A9509
“She’s Got Class”
S, M, L, XL

White and red plaid shirt with collar, attached red plaid tie and front pocket and pleated plaid skirt. (Thigh highs not included)
(2 Piece Set)



Style A8953
“Teacher’s Pet”
S, M, L, XL

Black and plaid zip-front vest style schoolgirl dress with school crest detail, faux collared shirt and plaid necktie. (Thigh highs, bow stocking pins and hair bows not included)
(2 Piece Set)



Style A9982
“Kickin’ Arse”
S, M, L, XL

Black knit stretch romper with dragon screen print, attached waist sash and leg wraps. Includes face mask.
(Sword not included)
(2 Piece Set)

Style A9984

“Just Cruisin”

S, M, L, XL

Navy and white satin polka dot romper with red sequin detailing and anchor appliqué. Includes sailor hat. (Earrings not included) (2 Piece Set)



Style A8922

“R.eally N.aughty”

S, M, L, XL

Nurse dress with attached apron and nurse hat. (Thigh highs, clipboard and pen not included) (2 Piece Set)



Style A9989

“Army Doll”

S, M, L, XL

Camouflage knit dress with zipper front closure and two military patches. Includes hat. (Earrings not included) (2 Piece Set)



Style A9507

“Maid For You”

S, M, L, XL

1X/2X, 3X/4X

Cap sleeve maid dress with lace overlay and bow detail. Includes choker and maid hat. (Gloves, duster, petticoat and thigh highs not included) (3 Piece Set)



Style A8918X

“Native Beauty”

S, M, L, XL

1X/2X, 3X/4X

Ultra suede dress with Native American trim, attached belt and matching headpiece. (2 Piece Set)



Style A8920X

“Geisha”

S, M, L, XL

1X/2X, 3X/4X

Gold lamé trim geisha dress with obi corset detailing and gold bow. (Chopsticks not included) (1 piece set)



Style A9507X

“Maid For You”

S, M, L, XL

1X/2X, 3X/4X

Cap sleeve maid dress with lace overlay and bow detail. Includes choker and maid hat. (Gloves, duster, petticoat and thigh highs not included) (3 Piece Set)



Style A0342X

“The Dirty Detective”

S, M, L, XL

1X/2X, 3X/4X

Two-tone dress with attached tie detail, Police patch screen print, badge pin, and Police hat. (Baton not included) (3 Piece Set)



Style A9981X

“S.W.A.T Police”

S, M, L, XL

1X/2X, 3X/4X

Black knit dress with front zipper and “S.W.A.T” screen print. Includes hat and police badge. (Baton and sunglasses not included) (3 Piece Set)







Dreamgirl[®]

The images and graphics in this catalogue [or CD] are the copyright-protected work of DG Brands International. Any use or reproduction without the express written consent of DG Brands is strictly prohibited. Violators will be prosecuted to the fullest extent of the law.

COPYRIGHT © MMXVI