



Dreamgirl[®]

取扱店 **ハッピーコスチューム**
by Cat Fish Club

<http://www.happycostume.com>

sales@happycostume.com

TEL 047-397-7377

2015/2016 COSTUME COLLECTION



Dreamgirl

Couples

Styles 9855 & 9856



(Male Costume)
Style 9856

“Mortal Samurai”

M, L, XL, XXL

Rich purple tunic with gold detailing. Includes headpiece, sash with gold Samurai print, sleeves, and pants with attached gold knee pads. (Sword not included) (5 Piece Set)

Fall in love with this Samurai and you will never be bored, just take a look at the size of his sword!

This Samurai beauty is elegant it's true, but get her mad and she'll cut you in two!



(Female Costume)
Style 9855

“Mortal Samurai”

S, M, L, XL

Rich purple metallic romper has underwire foam cups, sheer side skirt panels, gold sequin detailing and attached adjustable garters. Includes sequin-topped sleeves with gold Samurai print, headpiece, choker, and leg garters with attached wraps. (5 Piece Set)

The women of his village would never tattle, about what this warrior did when he came home from battle.

Slaying the king seemed like it would be easy, but chopping off his head made this warrior queasy.



(Male Costume)
Style 9825

“King Slayer”

M, L, XL, XXL

Distressed faux black leather with metallic blue tunic and embroidered crest has an attached velvet cape. Includes wrist gauntlets. (Sword, shield, pants, and headband not included) (2 piece set)

(Shown With)
Style 6379
“Men’s Basic Pant”
Black, White
M, L, XL, XXL

(Female Costume)
Style 9824

“King Slayer”

S, M, L, XL, 1X/2X, 3X/4X

Shimmering blue and black velvet dress with silver sequin detailing and embroidered crest has attached velvet cape. Includes wrist gauntlets and rhinestone headpiece. (3 Piece Set)



(Male Costume)
Style 9409
“Dragon Warrior King”
M, L, XL, XXL

Brown distressed leather look tunic with contrast waistband and long brown velvet cape with faux fur collar, detachable strap and attached crossed warrior bands. (Sword, gauntlet, shield and pants not included) (2 piece Set)

(Shown with)
Style 6379
“Men’s Basic Pant”
Black, White
M, L, XL, XXL

(Female Costume)
Style 9827
“Victorious Beauty”
S, M, L, XL

Faux distressed brown leather dress with gold detailing. Includes matching brown velvet cape with fur collar. (Gauntlets not included) (2 Piece Set)

It wasn’t from fear that all the women of his kingdom couldn’t help but stare.

Fighting dirty was her way, winning battles day after day.



This handsome knight is hot that's true, but he can also slay a dragon for you.

Taking a slice out of crime, one sword fight at a time!



(Male Costume)
Style 9968

"Knight Time"

M, L, XL, XXL

Silver metallic hooded medieval tunic with exaggerated shoulder armor detailing, double dragon embroidered appliqué and screen printed metal studs. Includes fingerless gloves and belt.
(Shield and sword not included)
(3 Piece Set)

(Shown With)
Style 6379
"Men's Basic Pant"
Black, White
M, L, XL, XXL

(Female Costume)
Style 9846

"Knight Time"

S, M, L, XL

Silver metallic dress with chainmail armor-look hood and mesh sleeves. Intricately embroidered two headed dragon appliqué and black stud detailing. Includes knee pads. (Sword and fingerless gloves not included)
(2 Piece Set)

(Shown With)
Style 9969
"Medieval - Galaxy Gloves"
Silver
O/S

It wasn't from fear that all the women of his kingdom couldn't help but stare.

When you see this warrior beauty, you will know from the start, that when she goes to battle, she will conquer every heart.

This warrior knew it couldn't be a sin, if cutting off heads would allow him to win.



This warrior always has such fun, she parties it up when the battle is won.

Style 9409

"Dragon Warrior King"

M, L, XL, XXL

Brown distressed leather look tunic with contrast waistband and long brown velvet cape with faux fur collar, detachable strap and attached crossed warrior bands. (Sword, gauntlet, shield and pants not included) (2 piece Set)

Shimmering gold foil printed turquoise knit dress with gold sequin dragon appliqué has attached gold foil printed turquoise cape. Includes gold lamé wrist gauntlets. (2 piece Set)

"Dragon Warrior Queen"

S, M, L, XL

Style 9487

Style 9405

"King of Swords"

M, L, XL, XXL

Gold and black chainmail armor-look knit tunic with embellished cross appliqué crest, attached cape and sash. (Gauntlet, shield and pants not included) (1 piece Set)

Gold and black foil dress with unique chainmail armor print, metal stud trim and gold cross appliqué. Includes headpiece and wrist gauntlets. (Sword and jewelry not included) (3 piece set)

"Queen of Swords Warrior"

S, M, L, XL

Style 9404

Naughty Cleopatra had a fling with both handsome Caesar and the Egyptian King!

This leader of Rome always wanted his way, whenever beautiful Cleopatra came to stay.

(Female Costume)
Style 9833

"Cleo"

S, M, L, XL

Stretch black velvet asymmetrical gown with jeweled, sequined Egyptian collar and attached gold sashes. Includes belt and adjustable gold armbands. (Jewelry and headpiece not included) (3 Piece Set)

(Shown With)
Style 9972
"Dazzling Ruby Headpiece"
O/S

(Male Costume)
Style 9841

"Julius Caesar"

M, L, XL, XXL

Distressed black faux leather tunic with gold embroidered detailing. Includes red velvet cape with medallion, and gold leaf headpiece. (Sword and gauntlets not included) (3 Piece Set)



"Cleo" costume shown with men's Style 9893, "King of Egypt."

(Female Costume)
Style 9859

“Yeah Baby!”

S, M, L, XL, 1X/2X, 3X/4X

Black and white mod dress with daisy trim straps. Includes headband and boot covers. (Jewelry not included) (3 Piece Set)



Teased up hair and lashes too, this mod 60’s girl wants to Go-Go dance for you.

“Yeah Baby”

(Male Costume)
Style 9909

“Yeah Baby!”

M, L, XL, XXL

1960’s mod black and white tunic with peace sign screen prints. (Pants not included) (1 Piece Set)



Customers came from miles around,
because they heard he had the best
wiener in town.

Customers lined up at the door
because she had the hottest buns and
that's for sure!

(Male Costume)
Style 9976

"Diner Dude"

M, L, XL, XXL

50's styled red and
white stripe apron with
screen printed "Bob"
nameplate. Includes
bow tie, hat, and "Best
Wiener in Town" pin.
(Shirt, pants, pencil,
tray and food
not included)
(4 Piece Set)

(Shown With)
Style 6379
"Men's Basic Pant"
Black, White
M, L, XL, XXL

(Female Costume)
Style 9975

"Diner Doll"

S, M, L, XL, 1X/2X, 3X/4X

50's styled red and white
striped dress with
attached petticoat, heart
buttons and screen
printed "Betty" nameplate.
Includes hat with heart
button, lace edged apron,
scarf and "Hot Buns" pin.
(Additional petticoat,
glasses, and socks
not included)
(5 Piece Set)

(Suggested Accessory)
Style 4582
"Ursula Petticoat"
Black, White
O/S



This Mile High Captain always takes time out of his flight to make sure his passengers feel just right!



Even if the flight was the absolute worst, she always made sure her customers came first.

Style 5236
"Mile High Pilot Hugh Jorgan"
M, L, XL, XXL

Button front jacket with satin and gold trim details. Includes pilot hat, collar with necktie and removable "Mile High Pilot Hugh Jorgan" name badge. (Pants not included) (4 piece set)

Black stretch knit dress with lace-up neckline, gold trim and detailing. Includes "Mile High Captain" pin, and pilot's hat. (3 Piece Set)

Style 9918
"Service with a Smile"
S, M, L, XL, 1X/2X, 3X/4X



Style 9468
"Disco Dude"
M, L, XL, XXL

Black polyester button front shirt with metallic holographic disco dot. (Sunglasses, necklace and pants not included) (1 piece Set)
(Shown With) Style 9605
"Men's Disco Pant" M, L, XL, XXL

Many a woman he did choose, while doing the Hustle in his platform shoes.



This Disco Doll was in hot pursuit, of a Disco guy in a three-piece suit.

Black stretch knit jumpsuit with metallic holographic disco dot. Includes stretch pink sequin belt. (Jewelry not included)

Style 9469
"Disco Doll"
S, M, L, XL

All the cowgirls came from far and wide, to ask this cowboy to give them a ride.

Every cowboy knew she was the best, when it came to having a drinking buddy in the wild, wild west!

(Male Costume)
Style 9832

"Buck Wild"

M, L, XL, XXL

Western style black suede, fringed jacket. Includes cowboy hat, bandana, and vest. (Shirt, belt, and pants not included) (4 Piece Set)

(Female Costume)
Style 9831

"Whiskey Girl"

S, M, L, XL

Black and pink velvet dress with Western style metallic print, fringe detailing, off-the-shoulder sleeves, tiered ruffle skirt with lace and attached garters. Includes ostrich feather barrette. (Thigh highs and jewelry not included) (2 Piece Set)

This Chief wants to show you his pow WOWWWW!!!

This native beauty has such allure, she's reservation royalty for sure.

How about a little tribal trouble?

The other braves thought it was wrong, that the chief was blessed with an arrow so long.



Style 8197
"Chief Wansum Tail"
M, L, XL, XXL

Native American styled ultra suede fringed shirt and pants with feather headdress. (3 piece set)

Ultra suede dress has Native American beaded appliqué and fringe detail. Includes a headpiece with feathers and matching beaded appliqué. (2 piece set)

Style 8196
"Reservation Royalty"
S, M, L, XL

Style 5877
"Pocahottie"
S, M, L, XL, 1X/2X, 3X/4X



Faux suede dress with intricate beaded neckline and layered fringe hem. Includes matching beaded headpiece with feathers. (2 piece set)

Native American styled ultra suede fringed shirt and pants with feather headdress. (3 piece set)

Style 9189
"Chief Long Arrow"
M, L, XL, XXL

*This sexy pirate is quite a cutie.
Everyone's after her fabulous booty.*

*When out to sea looking
for treasure, this pirate has
brought many a wench
pleasure.*

(Female Costume)
Style 9871

"Sea Worthy Pirate"

S, M, L, XL

Brown distressed leather look vest with attached peasant top and gold trim detailing. Includes black leather look pirate's hat and shiny knit capri pants with cuffs. (3 Piece Set).

(Male Costume)
Style 9872

"Sea Worthy Pirate"

M, L, XL, XXL

Brown distressed leather look vest with gold detailing. Includes pirate's tunic top, distressed leather look head wrap, striped waist sash and belt. (Pants and sword not included) (5 Piece Set)

(Shown With)
Style 6379
"Men's Basic Pant"
Black, White
M, L, XL, XXL

(Female Costume)
Style 9844

“Mighty Musketeer”

S, M, L, XL

Rich blue velvet dress with glitter sequin print and embroidered crest. Includes matching lined cape with large silver cross on back, and velvet Musketeer hat. (Gauntlets and jewelry not included)
(3 Piece Set)

(Male Costume)
Style 10000

“Mighty Musketeer”

M, L, XL, XXL

Rich blue velvet tunic with large embroidered crest and silver trim has attached satin cape with silver printed cross on the back. Includes medieval belt and Musketeer hat with ostrich feather. (Gauntlets, pants, and sword not included)
(3 Piece Set)

(Shown With)
Style 6379
“Men’s Basic Pant”
Black, White
M, L, XL, XXL

“All for one, one for all!”

Running into this swordsman couldn’t be beat, because what this Musketeer could do with his long sword was indeed a treat!



Finding a princess can be hard to do,
not every fair maiden can fit in that
glass shoe!



Every princess knows they
must be pretty and clever,
or finding a prince might
just take forever!

Who's afraid of the Big Bad Wolf?



The fairytale does tell, if your
grandma suddenly has a deep
voice, big eyes and mouth, you
may want to run like hell.

Style 9474
"Fairytale Prince"
M, L, XL, XXL

Tunic with gold embroidered
royal crest, gold fringed epaulets
and matching belt. Includes
elastic waist pants with
gold trim. (3 piece Set)

Blue satin dress with
jeweled neckline trim, high-low
hemline, sheer puff sleeves and
sparkly print skirt. Includes
crown. (Jewelry, satin gloves and
thigh highs not included)
(2 piece set)

Style 9473
"Having a Ball"
S, M, L, XL

Style 9493
"Big Bad Wolf"
M, L, XL, XXL

Men's red and black
check jagged edge tunic
with faux fur hood with
wolf ears. Includes
fingerless gloves.
(Pants not included)
(2 piece Set)

Beautifully detailed fairytale dress
includes underwire foam cups
with pleated ruffles, embroidered
heart trim, and lace-trimmed
apron. Includes full length hooded
satin cape. (Basket, thigh highs,
stocking bows, and satin gloves
not included) (2 piece Set)

Style 9477
"Little Red"
S, M, L, XL,
1X/2X, 3X/ 4X



(Female Costume)
Style 9853

“Sea Goddess”

S, M, L, XL

Turquoise gown with shell shaped underwire foam cups, sheer peplum and sequin shell appliqué detailing. Includes armbands with trailing chiffon and removable/adjustable shoulder straps. (Headpiece not included) (3 Piece Set)

(Shown With)
Style 9515
“Shimmer Rhinestone
Headpiece”
O/S

(Male Costume)
Style 9854

“Poseidon”

M, L, XL, XXL

Tunic with attached sash has gold trident detailing. Includes crown, belt, and wrist gauntlets. (Trident not included) (4 Piece Set)

*This exquisite sea creature
had such glam, she created a
tsunami wherever she swam!*

*He is handsome and powerful and
the God of the Sea; in his strong
arms is where women want to be.*



She's an ethereal beauty who's come from above, looking for the perfect man to love.

Every inch of this mighty God is simply heavenly!

(Female Costume)
Style 9875

"Goddess of Delight"

S, M, L, XL

Exquisite white chiffon dress with gold fleck print has unique high-low hemline and attached gold sashes. Includes gold leaf headpiece and armbands. (Jewelry not included) (3 Piece Set)

(Male Costume)
Style 8860

"He's a God"

M, L, XL, XXL

White tunic with gold satin attached cape and matching trim. Gold leaf headpiece, removable belt and wrist gauntlets included. (4 piece set)

(Left-side Female Costume)
Style 9836

“Simply Fab!”

S, M, L, XL

Black velvet and sequin front dress with silver sequin and rhinestone appliqué. Includes sequin ostrich feather headpiece. (Gloves, boa and jewelry not included) (2 Piece Set)

(Shown With)
Style 5218
“Luna Glove”
Black, White
O/S

(Center Male Costume)
Style 9838

“Good Time Charlie”

M, L, XL, XXL

Striped three button front jacket. Includes hat and bow tie. (Shirt and pants not included) (3 Piece Set)

(Shown With)
Style 6379
“Men’s Basic Pant”
Black, White
O/S

(Right-side Female Costume)
Style 9837

“Sophisticated Lady”

S, M, L, XL, 1X/2X, 3X/4X

Burgundy velvet dress with sequin scroll design has an intricately embroidered gold neckline and hemline trim with sequin fringe. Includes gold sequin headpiece with ostrich feather. (Gloves, boa, and cigarette holder not included) (2 Piece Set)



(Shown With)
Style 5218
“Luna Glove”
Black, White
O/S

All the flappers loved him, though they knew it wouldn’t last; at least for the night, good time Charlie was a blast.

Drinking, smoking, sequins shining bright, this sophisticated lady loves to dance all night.



She loved to dance the Charleston, and drink lots of whiskey, and so this simply fab flapper always felt very frisky!

If this sexy gangster is the one you choose, he might make you an offer you can't refuse.

Although she was alluring, they knew it was a shame, because this tempting beauty was a very dangerous dame.



Style 8190
"Gangsta"
M, L, XL, XXL

Black and white pinstripe double breasted gangster suit. Includes a dickie, machine gun screen-printed necktie, carnation pin and hat. (Shirt not included) (6 piece set)

Black and white pinstripe knit dress with removable carnation. Includes hat, tie with dollar sign, and arm garter. (Earrings and money not included) (4 Piece Set)

Style 9839
"Deadly Dames"
S, M, L, XL,
1X/2X, 3X/4X



Don't be a victim of lust and give this dirty gangster your trust.



Blowing on his dice is sure nice!

Style 9889
"Dirty Work"
S, M, L, XL

Sleek 40's styled halter dress with back slit, and attached red tie. Includes suspenders, carnation pin, and gangster hat and arm garter. (5 Piece Set)

Button front longer length pinstripe zoot suit with matching pants with side pocket and gold chain detail. Includes adjustable removable elastic suspenders, matching hat and necktie with "\$" sign detail. (Shirt not included) (5 piece set)

Style 8105
"Zoot Suit Riot"
M, L, XL, XXL

(Male Costume)
Style 9867

“DEA Agent Phil Mypockets”

M, L, XL, XXL

Black police shirt with DEA patches. Includes DEA hat and “Agent Phil Mypockets” nameplate. (Handcuffs, baton, belt and pants not included) (3 Piece Set)

(Female Costume)
Style 9858

“DEA Secret Agent”

S, M, L, XL

Shiny black stretch knit romper with zip-front detailing and shiny vinyl buckles has DEA patches and attached/adjustable garters. Includes belt, leg garters, police radio/speaker, and DEA hat. (Gloves, thigh highs, and sunglasses not included) (5 Piece Set)

This DEA agent hated to be rude, but to do a proper search, his suspects needed to be nude.

This DEA Agent doesn’t mean to stare, but she wants to know what you’re hiding in your underwear.



Hardened criminals never get very far, when Officer Randi handcuffs them in her squad car.

This prison guard walks the beat, looking for inmates who look pretty sweet.



(Female Costume)
Style 9905

“Officer Randi Stopsign”

S, M, L, XL

Navy blue button-front dress with shiny black vinyl trim. Includes authentic looking police patches, badge, “Officer Randi Stopsign” nameplate, belt, police radio/speaker, handcuffs, and hat with badge.
(Baton and jewelry not included)
(6 Piece Set)

(Male Costume)
Style 9947

“Prison Guard Hugh B. Guilty”

M, L, XL, XXL

Blue button-front prison guard shirt. Includes badge, “Prison Guard Hugh B. Guilty” nameplate, belt, handcuffs and radio/speaker.
(Pants not included)
(6 Piece Set)



“Prison Guard Hugh B. Guilty” costume shown with women’s Style 9505, “Locked Up!”

(Male Costume)
Style 9438

“Sgt. Dick Spectacular”

M, L, XL, XXL

Black cotton long sleeve work shirt with police patches on both shoulders and the chest. Includes police hat with badge, police badge pin, and “Sergeant Dick Spectacular” nameplate. (Belt, baton, walkie-talkie, sunglasses and handcuffs not included) (4 piece set)

(Female Costume)
Style 9441

“Traffic Stopping Cop”

S, M, L, XL

Zip-front black knit dress has pink vinyl trim and police patches. Includes “Officer Anita Bigone” nameplate, pink shiny vinyl police hat with badge, pink vinyl belt, police badge pin and handcuffs. (Fingerless gloves, pantyhose, and baton not included) (6 piece set)



Sergeant Dick Spectacular was his name. Once he handcuffed you, you were never quite the same.

This sexy cop has such glam, wherever she goes she creates a traffic jam.

(Male Costume)
Style 8817

“Dirty Cop Officer Ed Banger”

M, L, XL, XXL

Black sleeveless collared shirt with front pockets, police patch and removable neck tie. Includes police hat with badge pin, “Officer Ed Banger” name plate, removable police badge and arm band. (Sunglasses, handcuffs, baton and pants not included) (6 piece set)

(Female Costume)
Style 8816

“Dirty Cop Officer Anita Bribe”

S, M, L, XL, 1X/2X, 3X/4X

Black bengaline stretch knit dress with belt and police patches on shoulders. Costume includes police hat with badge pin, “Officer Anita Bribe” name plate and removable police badge. (Handcuffs not included) (5 piece set)



Corruption was his middle name. Banging heads was his game.

Even fugitives on the run, thought getting arrested by this sexy cop, would be kind of fun!

This elite agent loves finding hardened criminals.

This Special Ops cop loves to play rough.



(Female Costume)
Style 9443

“Special Ops”

S, M, L, XL

Sleek and sexy black jumpsuit with buckle front detailing and Special Operations patch. Includes bullet belt. (Sunglasses, walkie talkie and handcuffs not included) (2 piece set)

Black heavy duty vest has bullet holders, utility pockets, SWAT Police back screen print and special SWAT patch. Includes dickey with face mask and arm band with embroidered Special Ops patch. (Pants, handcuffs, baton, helmet and sunglasses not included.) (3 piece set)

(Male Costume)
Style 9444

“Special Ops”

M, L, XL, XXL



This is your lucky day, Dr. Bud Smoker is going to make your problems go away.

Once she takes a look at your case, this helpful nurse can put a smile on your face.

Just call 911 and this fire fighting beauty will be on the run for a little fun.



This smokin' hot fireman always comes equipped with his long hose ready.

Style 9411
"Dr. Bud Smoker"
M, L, XL, XXL

Men's lab coat with front and back screen print. Dr. Bud Smoker name plate included. (Pants and shirt not included) (2 piece Set)

White nurse's uniform with green accents and cross screen prints. Includes nurse's hat, belt, "Nurse Anita Reefer" name plate, and stocking topper bow pins. (Thigh highs not included) (5 piece Set)

Style 9435
"Nurse Anita Reefer"
S, M, L, XL

Style 6550
"Smokin' Hot Fireman"
M, L, XL, XXL

Buckle front jacket with reflective tape trim detail. Includes knit tank top with "Fire Department" heat transfer and fireman hat. (Pants not included) (3 piece set)

Shiny black long sleeve stretch knit dress has front zipper with silver hook front closure. Dress is trimmed with yellow and silver and has authentic looking fire patches. Includes adjustable belt and red fire hat. (3 Piece Set)

Style 9887
"Too Hot to Handle"
S, M, L, XL

(Male Costume)
Style 9868

“Galaxy Wars”

M, L, XL, XXL

Tunic with intergalactic detailing. Includes fingerless space gloves, and headpiece.
(Pants, glasses and light saber not included)
(3 Piece Set)

(Shown With)
Style 6379
“Men’s Basic Pant”
Black, White
O/S

Style 9970
“Galaxy Glasses”
O/S

(Female Costume)
Style 9863

“Galaxy Wars”

S, M, L, XL

Metallic space dress with intergalactic detailing and underwire foam cups. Includes headpiece, and fingerless space gloves.
(Wig, glasses, and gun not included)
(3 Piece Set)

(Shown With)
Style 9970
“Galaxy Glasses”
O/S

Style 9971
“Galaxy Gun”

He enjoyed intergalactic women but found them a little spacey.

If you’re looking for a good time, this girl’s the one, she loves to have out-of-this-world fun!





This dangerous ninja is sexy it's true, but get too close and he might do naughty things to you.

*This Ninja beauty is fearless and fast,
and as you can see, she's built to
last.*

(Male Costume)
Style 9977

"Blades of Death"

M, L, XL, XXL

Black knit tunic with dragon screen print and ninja styling. Includes mask, belt, weapon garter, and leg guards with ninja screen prints. (Pants, gauntlets, weapon shoulder holster, and sword not included)
(5 Piece Set)

(Shown With)
Style 6379
"Men's Basic Pant"
Black, White
O/S

(Female Costume)
Style 9491

"Just Kickin' It"

S, M, L, XL

Sexy romper has a contrast silver lamé lace-up plunge neckline. Open side skirt has silver lamé trim and novelty sequin waistband with dragon appliqué. Includes headband and ninja mask. (Battle ax not included)



(Male Costume)
Style 9874

“The Assassins”

M, L, XL, XXL

Hooded black leather look tunic. Includes belt with loop for weapon, battle ax weapon and wrist gauntlets. (Pants not included) (4 Piece Set)

(Shown With)
Style 6379
“Men’s Basic Pant”
Black, White
O/S

(Female Costume)
Style 9873

“The Assassins”

S, M, L, XL

Hooded black leather look dress with attached chiffon cape and embellished neckline piece. Includes fingerless gloves with knives, belt, mask, and battle ax weapon. (6 piece set)

You might want to call your love affair with this assassin quits, although he might get mad and cut you to bits.

As tempting as she might be, this trained assassin can cut you in three.



*This sexy vampire can be such a
fright, when he pulls
you close and takes a bite!*

*Although this vamp is
looking sweet, better
stay back, or you'll be
her next treat.*

(Male Costume)
Style 8177

"Just One Bite"

M, L, XL, XXL

Black velvet vampire
waistcoat with contrast
satin lapels and cuffs.
Front lapels have gothic
embroidered satin
appliqué crosses with
rhinestones. Coat back
has embroidered fiber
optic light-up cross.
Includes a white satin
ruffle dickie,
instructions, hidden
pocket for on/off switch
and batteries. (Shirt and
pants not included)
(2 piece set)



(Shown With)
Style 6379
"Men's Basic Pant"
Black, White
O/S

(Female Costume)
Style 9878

"To Die Over"

S, M, L, XL

Exquisite flocked corset
styled dress with
high-low hemline,
metallic mesh ruffled
skirt, and sequin
neckline detail. Includes
detachable cape with
vampire collar. (Gloves,
jewelry, and pantyhose
not included)
(2 Piece Set)

(Shown With)
Style 5218
"Luna Glove"
O/S



(Male Costume)
Style 9904

“Mr. Bones”

M, L, XL, XXL

Black velvet jacket with red tattered edges has an attached shirt front with skeleton print. Includes collapsible hat with skull and skeleton fingerless gloves.
(Cigar and pants not included)
(3 Piece Set)

*He’s always out knocking over
graveyard stones, hoping to find
someone who will jump his bones.*

*By day she sleeps 6 feet deep. By
night she does the graveyard creep.*

(Female Costume)
Style 9903

“Ms. Bones”

S, M, L, XL

Exquisite skeleton screen print dress has stretch bodice with attached full-layered tulle and satin skirt. Includes skeleton screen print fingerless gloves.
(Hat and jewelry not included)
(2 Piece Set)

(Shown With)
Style 10005
“Ms. Bones Hat”
O/S



This troubled groom didn't see, how long death 'til you part could actually be.

She still haunts the graveyard in her wedding dress. Who knew her wedding day would have been such a mess?

(Male Costume)
Style 9946

"Groom of Doom"

M, L, XL, XXL

Gray tattered jacket with spider web mesh and skull buttons. Includes collapsible hat and shirt front dickey with bow tie. (Pants not included) (3 Piece Set)

(Female Costume)
Style 9945

"Bride of Doom"

S, M, L, XL

Gray tattered gown with skeletal ribcage print and full layered tulle overskirt. Roses adorn the neckline and dropped waistline. Includes tattered gray veil headband with roses, and choker with skull. (Thigh highs not included) (3 Piece Set)

(Male Costume)
Style 9902

“Dr. Hugh B. Dead”

M, L, XL, XXL

Doctor’s white lab coat with screen printed blood splatter and medical logos. Back has bloody handprint and “Mental Ward” screen print. Includes wig, glasses and stick-on mustache. (Pants, stethoscope, and chainsaw not included) (4 Piece Set)

(Female Costume)
Style 9901

“Working the Graveyard Shift”

S, M, L, XL

Nurse’s uniform with screen printed splattered blood and ragged sleeves and hemline. Back has bloody handprint and “Mental Ward” screen print. Includes “Mental Ward” headpiece and “Nurse Norma Lee Crazy” nameplate. (Cleaver and stockings not included) (3 Piece Set)

This doctor’s hunger has no bounds; he would rather feast on his patients than make his rounds.

This zombie nurse will take away your headache pain; she will bite off your head and eat your brain.



The sword swallowing beauty flirts with danger. Where else can you see an act that's stranger?

This Freak Show beauty has a lot at stake; she might get bitten if she doesn't charm that snake!

(Female Costume)
Style 9883

"Champion Sword Swallower"

S, M, L, XL

Black velvet corset-styled dress with sequins, fringe and a tutu bottom with attached garters. Includes red metallic fringed shrug with "Champion Sword Swallower" screen print on the back. Includes belt with loop for sword, sword, and vintage-styled turban. (Thigh highs not included)
(5 Piece Set)

(Male Costume)
Style 9882

"Freak Show"

M, L, XL, XXL

Red velvet jacket with gold satin lapels and cuffs has black sequin trim. Large "Freak Show" vintage looking screen print on the back of the jacket. Includes striped satin vest with attached dickie with bow tie, and collapsible velvet hat. (Pants not included)
(3 Piece Set)

(Female Costume)
Style 9881

"The Snake Chamer"

S, M, L, XL

Seductive metallic red top with gold sequin snakes, fringe and gold coin detailing. Includes side slit velvet skirt with sequin embellished waistband and snake detail and headpiece with coins. (Prop snake not included)
(3 Piece Set)



Step right up for what its worth, to see the greatest Freak Show here on Earth!

irreverent Families

Styles 9901, 9902, 9938 & 9939





Fun for the whole bloody family.



(Shown Left to Right)

(Boys' Costume)
Style 9939
This Mischief & Mayhem costume is featured in our 2015-2016 Sugar Sugar Costume Catalogue.
"Gone Mental"
S, M, L (Boys)

(Men's Costume)
Style 9902
See page 32 for additional product descriptions.
"Dr. Hugh B. Dead"
M, L, XL, XXL

(Girs' Costume)
Style 9938
This Sugar Sugar costume is featured in our 2015-2016 Sugar Sugar Costume Catalogue.
"Candy Striper"
S, M, L (Girls)

(Women's Costume)
Style 9901
See page 32 for additional product descriptions.
"Working the Graveyard Shift"
S, M, L, XL



(Shown Left to Right)

(Boys' Costume)
Style 9956
This Mischief & Mayhem costume is featured in our 2015-2016 Sugar Sugar Costume Catalogue.
"Escaped Convict"
S, M, L (Boys)

(Girls' Costume)
Style 9955
This Sugar Sugar costume is featured in our 2015-2016 Sugar Sugar Costume Catalogue.
"Hannah Cuffs"
S, M, L (Girls)

(Men's Costume)
Style 9947
This Sugar Sugar costume is featured in our 2015-2016 Sugar Sugar Costume Catalogue.
"Prison Guard Hugh B. Guilty"
M, L, XL, XXL

See page 23 for additional product descriptions.

(Women's Costume)
Style 9905
This Sugar Sugar costume is featured in our 2015-2016 Sugar Sugar Costume Catalogue.
"Officer Randi Stopsign"
S, M, L, XL

See page 23 for additional product descriptions.

Outta this world!



(Shown Left to Right)

(Boys' Costume)
Style 9954
"Alien Lord"
S, M, L (Boys)
This Mischief & Mayhem costume is featured in our 2015-2016 Sugar Sugar Costume Catalogue.

(Girls' Costume)
Style 9953
"Spacey Tracey"
S, M, L (Girls)
This Sugar Sugar costume is featured in our 2015-2016 Sugar Sugar Costume Catalogue.

(Men's Costume)
Style 9868
"Galaxy Wars"
M, L, XL, XXL
See page 26 for additional product descriptions.

(Women's Costume)
Style 9863
"Galaxy Wars"
S, M, L, XL
See page 26 for additional product descriptions.

A family that slays together, stays together.



(Shown Left to Right)

(Boys' Costume)
Style 9941
"Warrior Knight"
S, M, L (Boys)

This Mischief & Mayhem costume is featured in our 2015-2016 Sugar Sugar Costume Catalogue.

(Tween Girl Costume)
Style 9958
"Battle Beauty"
L, XL (Tween)

This Sugar Sugar costume is featured in our 2015-2016 Sugar Sugar Costume Catalogue.

(Men's Costume)
Style 9825
"King Slayer"
M, L, XL, XXL

See page 5 for additional product descriptions.

(Women's Costume)
Style 9824
"King Slayer"
S, M, L, XL, 1X/2X, 3X/4X

See page 5 for additional product descriptions.

(Girls' Costume)
Style 9957
"Gladiator Girl"
S, M, L (Girls)

This Sugar Sugar costume is featured in our 2015-2016 Sugar Sugar Costume Catalogue.

The “Mocking” Dead.



(Shown Left to Right)

(Boys' Costume)
Style 9941
“Warrior Knight”
S, M, L (Boys)

This Mischief & Mayhem costume is featured in our 2015-2016 Sugar Sugar Costume Catalogue.

(Men's Costume)
Style 9904
“Mr. Bones”
M, L, XL, XXL

See page 30 for additional product descriptions.

(Women's Costume)
Style 9903
“Ms. Bones”
S, M, L, XL

See page 30 for additional product descriptions.

(Girls' Costume)
Style 9942
“Seniorita Bone-ita”
S, M, L (Girls)

This Sugar Sugar costume is featured in our 2015-2016 Sugar Sugar Costume Catalogue.

Ghouls Gone Wild.



(Shown Left to Right)

(Boys' Costume)
Style 9952

"Ghouls Out for Summer"
S, M, L (Boys)

This Mischief & Mayhem costume is featured in our 2015-2016 Sugar Sugar Costume Catalogue.

(Women's Costume)
Style 9945

"Bride of Doom"
S, M, L, XL

See page 31 for additional product descriptions.

(Girls' Costume)
Style 9951

"Sweet 'n Spooky"
S, M, L (Girls)

This Sugar Sugar costume is featured in our 2015-2016 Sugar Sugar Costume Catalogue.

(Men's Costume)
Style 9946

"Groom of Doom"
M, L, XL, XXL

See page 31 for additional product descriptions.



Galactic Heroes

Style 9863 & 9868



*A look at this Space girl
and you might embrace,
doing a little dating in outer space!*

Style 9852

"Space Wars"

S, M, L, XL

Shiny zip-front metallic
silver jumpsuit with
intergalactic detailing.
Includes matching belt.
(Glasses, gauntlets,
earrings and gun not
included)
(2 Piece Set)

(Shown With)
Style 9970
"Galaxy Glasses"
O/S

Style 9971
"Galaxy Gun"

Style 9969
"Medieval - Galaxy
Gloves"
O/S



*If you're looking for a good time,
this girl's the one, she loves to
have out-of-this-world fun!*



Style 9863
"Galaxy Wars"
S, M, L, XL

Metallic space dress with intergalactic detailing and underwire foam cups.
Includes headpiece and fingerless space gloves.
(Wig, glasses, and gun not included)
(3 Piece Set)

(Shown With) Style 9970 "Galaxy Glasses" O/S
(Shown With) Style 9971 "Galaxy Gun"

*He enjoyed intergalactic women
but found them a little spacey.*



Tunic with intergalactic detailing. Includes fingerless space gloves,
and headpiece. (Pants, glasses and galaxy gun not included)
(3 Piece Set)

(Shown With) Style 6379 "Men's Basic Pant" Black, White O/S
(Shown With) Style 9970 "Galaxy Glasses" O/S
(Shown With) Style 9971 "Galaxy Gun"

Style 9868
"Galaxy Wars"
M, L, XL, XXL

Style 9864

"Alien Seduction"

S, M, L, XL

*She leaves her lovers with a smile
floating in outer space,
and then she's gone without a trace.*

Black zip-front romper
with metallic green
space dots and high
collar. Includes alien
sunglasses, antennae
headband, and belt with
attached sheer skirt.
(Gloves, wig, and galaxy
gun not included)
(4 Piece Set)

(Shown With)
Style 9971
"Galaxy Gun"





through the Ages

Styles 9833 & 9893



Style 9833
“Cleo”
S, M, L, XL

Stretch black velvet asymmetrical gown with jeweled, sequined Egyptian collar and attached gold sashes. Includes belt and adjustable gold armbands. (Jewelry and headpiece not included)
(3 Piece Set)

(Shown With)
Style 9972
“Dazzling Ruby
Headpiece”
O/S

Naughty Cleopatra had a fling with both handsome Caesar and the Egyptian King!





*This leader of Rome always wanted
his way, whenever beautiful Cleopatra
came to stay.*

(Male Costume)
Style 9841

“Julius Caesar”

M, L, XL, XXL

Distressed black faux
leather tunic with gold
embroidered detailing.
Includes red velvet cape
with medallion, and gold
leaf headpiece.
(Sword, shield, and
gauntlets not included)
(3 Piece Set)

Style 9893
"King of Egypt"
M, L, XL, XXL

This versatile costume can be worn with or without the included shirt. Includes Egyptian collar with attached gold cape, wrist gauntlets, Royal Nemes headpiece, Eye of Horus Necklace, and Egyptian Shendyt skirt with embellished waistband. (5 Piece Set)

The mighty king of Egypt always got what he desired, with never a shortage of love slaves for him to hire.



Style 9840

"Cleopatra"

S, M, L, XL

*This naughty babe of the Nile, always
leaves them with a smile!*

Multi-color rhinestone
embellished Egyptian
collar with attached
cape and wristbands.
Gold stretch dress with
Egyptian motif and
sequin detailing.
Includes beaded
headpiece.
(Jewelry not included)
(3 piece set)



Style 9845

“Slave Princess”

S, M, L, XL

Green metallic underwire bustier top with zip-off midriff and rhinestone and metallic gold scroll detailing. Slave skirt has attached shorts. Includes choker with snap-on chain, wrist and ankle cuffs, and rhinestone headpiece. (6 Piece Set)

*Being a prisoner in chains isn't bad
you see, it just depends who has the
key!*



Convertible



Style 9851

“Cave Slave”

S, M, L, XL

*Getting clubbed on the head might
make you mad, but waking up to this
cave beauty wouldn't be so bad!*

Sueded animal print
underwire top with fur
trim and lace-up
detailing. Matching skirt
with attached belt.
Includes headpiece,
necklace, arm tie and
wrist gauntlets.
(Faux bone prop
not included)
(6 Piece set)



Style 9843
"Renaissance Royalty"
S, M, L, XL

Rich green velvet gown with gold embroidery, sequin trim and gold satin attached underskirt. Includes rhinestone headpiece and velvet choker.
(Petticoat and jewelry not included)
(3 Piece Set)

This enchanting beauty seduced many a king, then on to a different kingdom, for another royal fling.





Looking for a hot knight to slay me a dragon.
Only serious applicants need apply.

Style 9842

"Medieval Enchantress"

S, M, L, XL, 1X/2X, 3X/4X

Exquisite embossed
burgundy velvet gown
with gold sequin
neckline piece and
sheer sleeves. Includes
gold sequin medieval
belt and headpiece.
(Jewelry not included)
(3 Piece Set)



Style 9978
“Magnificent Masquerade”
S, M, L, XL

Exquisite ivory velvet and satin gown embellished with gold sequin neckline appliqué and trims, and full length gold sparkle sheer open front skirt. Includes gold mask with ostrich feathers. (Fan, jewelry, and thigh highs not included) (2 Piece Set)

Everyone at the Masquerade Ball wanted to ask, who was the beauty behind that mask?

(Shown With)
Style 7030
“Sheer Thigh High”
Black, White
O/S, O/S Queen



Running into this swordsman
couldn't be beat, because what
this Musketeer could do with his
long sword was indeed a treat!

“All for one, one for all!”



(Male Costume)
Style 10000
“Mighty Musketeer”
M, L, XL, XXL

Rich blue velvet tunic with large embroidered crest and silver trim has attached
satin cape with silver printed cross on the back. Includes medieval belt and
Musketeer hat with ostrich feather.
(Gauntlets, pants, and sword not included) (3 Piece Set)

(Shown With) Style 6379 “Men’s Basic Pant” Black, White
M, L, XL, XXL

Rich blue velvet dress with glitter sequin print and embroidered crest.
Includes matching lined cape with large silver cross on back, and velvet
Musketeer hat.
(Gauntlets and sword not included)
(3 Piece Set)

Style 9844
“Mighty Musketeer”
S, M, L, XL

Style 9451
“Medieval Maiden”
S, M, L, XL

Black velvet dress with high-low hemline, exquisite 3-dimensional appliquéd neckline piece, contrast red velvet and sheer chiffon sleeves. Includes adjustable golden Medieval head piece. (Necklace not included) (2 piece set)



This medieval beauty has a busy day, her castle’s a mess and there’s a dragon to slay.

Style 8815
“Queen of Thrones”
S, M, L, XL

Purple velvet embroidered and sequined gown with satin lined Renaissance sleeves and high-low hemline. Gown is trimmed with gold sequins throughout. Velvet and gold headpiece with veil included. (Jewelry not included) (2 piece set)



She was a stunning beauty on her thrown, and when she went to her chambers, she was never alone.



This Royal beauty has such fun; she never bows down to anyone.



Style 9471
“The Royals”
S, M, L, XL

Red velvet dress with faux ermine collar has sequined lace hemline and an attached full length satin cape. Includes a mini crown and choker. (Bracelet, satin gloves, thigh highs and scepter not included) (3 piece set)



(Shown With) Style 5218 “Luna Glove”, Black, White, O/S
(Shown with) Style 7030 “Sheer Thigh High” Black, White O/S, O/S Queen

*Tempted are many on the Nile,
when this golden seductress
flashes a smile.*



Style 9463

"Nefertiti"

S, M, L, XL

Egyptian patterned sequin design dress with gold foil print pleated chiffon bottom, sequin collar with attached cape, removable/adjustable straps and sequin armbands. Includes gold coin crown. (Earrings not included) (3 piece Set).

*This Medieval beauty has
seduced many a knight, in
her castle late at night.*



Blue velvet dress with shimmering sequined neckline piece. Dress has sheer bottom lined with sequin trim and golden mesh open sleeves. Includes jeweled crown. (Jewelry not included) (2 piece set)

Style 9472

"Medieval Beauty"

S, M, L, XL

Style 9849
"Peace Out"
S, M, L, XL

Suede halter top with lace-up detailing, 1960's styled patches, and matching fringed pants. Includes headband with daisy and fringe detail. (Jewelry not included) (3 Piece Set)

*The 60's were such fun,
love and peace for everyone.*



"Yeah Baby"



Style 9909

"Yeah Baby!" (Men's)

M, L, XL, XXL

1960's mod black and white tunic with peace sign screen prints.
(Pants and wig not included)
(1 Piece Set)

*Teased up hair and
lashes too, this mod
60's girl wants to Go-Go
dance for you.*



Black and white mod dress with daisy trim straps.
Includes headband and boot covers.
(Jewelry not included)
(3 Piece Set)

Style 9859

"Yeah Baby!" (Women's)

S, M, L, XL, 1X/2X, 3X/4X

Style 9469
"Disco Doll"
S, M, L, XL

Black stretch knit jumpsuit with metallic holographic disco dot. Includes stretch pink sequin belt. (2 piece set)



This Disco Doll was in hot pursuit, of a Disco guy in a three-piece suit.



She's got the Go Go beat that can't be beat!



Style 9468
"Disco Dude"
M, L, XL, XXL

Black polyester button front shirt with metallic holographic disco dot. (Pants not included) (1 piece set)

(Shown With)
Style 9605
"Men's Disco Pant"
Black
M, L, XL, XXL

Many a woman he did choose, while doing the Hustle in his platform shoes.



Style 8158
"Go Go Gorgeous"
S, M, L, XL, 1X/2X, 3X/4X

Stretch knit retro pattern A-line Go Go dancer dress has bell shaped long sleeves and unique shaped neckline. Includes matching retro glasses, earrings, headband and faux vinyl daisy belt. (5 piece set)

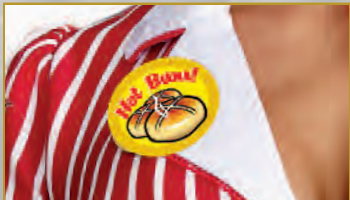


It
workin'



Style 9975

Customers lined up at the door because she had the hottest buns and that's for sure!



Style 9975
"Diner Doll"
S, M, L, XL, 1X/2X, 3X/4X

50's styled red and white striped dress with heart buttons and screen printed "Betty" nameplate. Includes hat with attached petticoat, heart button, lace edged apron, scarf and "Hot Buns" pin. (Petticoat, glasses, socks, tray, and food not included) (5 Piece Set)

+

Customers came from miles around, because they heard he had the best wiener in town.



Style 9976
"Diner Dude"
M, L, XL, XXL

50's styled red and white stripe apron with screen printed "Bob" nameplate. Includes bow tie, hat, and "Best Wiener in Town" pin. (Shirt, pants, pencil, tray and food not included) (4 Piece Set)

(Shown With) Style 6379 "Men's Basic Pant" Black, White
M, L, XL, XXL

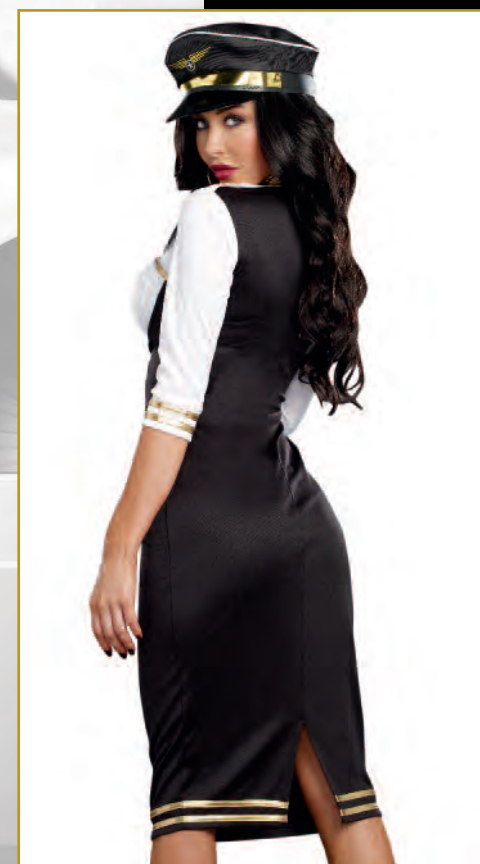
Style 9906

"Friendly Skies"

S, M, L, XL

*No one minded her turbulent flight,
because a mile high quickie made
everything seem alright.*

Black and white
3/4 sleeved stretch knit
dress with underwire
foam cups and gold trim
detailing. Includes "Mile
High Captain" pin, gold
scarf, flight wing pin and
pilot's hat.
(Jewelry not included)
(5 Piece Set)



Even if the flight was the absolute worst, she always made sure her customers came first.



Style 9918
“Service with a Smile”
S, M, L, XL, 1X/2X, 3X/4X

Black stretch knit dress with lace-up neckline, gold trim and detailing. Includes “Mile High Captain” pin, and pilot’s hat. (3 Piece Set)



This Mile High Captain always takes time out of his flight to make sure his passengers feel just right!



Button front jacket with satin and gold trim details. Includes pilot hat, collar with necktie and removable “Mile High Pilot Hugh Jorgan” name badge. (Pants not included) (4 piece set)

(Shown With) Style 6379 “Men’s Basic Pant” Black, White
M, L, XL, XXL

Style 5236
“Mile High Pilot
Hugh Jorgan”
M, L, XL, XXL

You wouldn't be upset if your house was a mess, if your maid looked like this in a dress.



Style 8211
"Maid to Order"
S, M, L, XL, 1X/2X, 3X/4X

Ruffled pinafore apron with vintage Parisian print of polka dots and attached to black knit dress with sheer sleeves and large back bow. Includes removable/adjustable garters with bows, headpiece and feather duster. (Thigh highs not included) (3 piece set)

(Shown With) Style 7031 "Sheer Thigh High"
Black, Red, White O/S



She's always ready, when things get dirty.



Black underwire foam cup dress with attached polka dot petticoat and white lace detailing. Includes headpiece, choker, and apron. (Feather duster, thigh highs and stocking bows not included) (4 piece set)

Style 9416
"Bonjour Bonjour"
S, M, L, XL

The only thing she has left to clean
is your dirty mind.



Style 9417
"Keep It Clean"
S, M, L, XL, 1X/2X, 3X/4X

Black stretch velvet vintage styled dress with ivory and gold embroidered detailing. Includes embroidered apron, headpiece and choker. (Feather duster not included) (4 piece set)



All the men went into a
trance, when this Burlesque
Bombshell started to dance.



Gold sequin corset styled dress has hook and eye front detail and attached ruffled burlesque skirt with fringe. Includes ostrich feather headpiece and choker. (Boa, satin gloves and pantyhose not included) (3 piece set)

(Shown With) Style 7034 "Fishnet Pantyhose" Black O/S
(Shown With) Style 5218 "Luna Glove" Black, White O/S



Style 9565
"Burlesque Bombshell"
S, M, L, XL

best of The West



Style 9831

Every cowboy knew she was the best, when it came to having a drinking buddy in the wild, wild west!



Style 9831
“Whiskey Girl”
S, M, L, XL
Black and pink velvet dress with Western style metallic print, fringe detailing, off-the-shoulder sleeves, tiered ruffle skirt with lace and attached garters. Includes ostrich feather barrette. (Thigh highs and jewelry not included) (2 Piece Set)

All the cowgirls came from far and wide, to ask this cowboy to give them a ride.



Western style black suede, fringed jacket. Includes cowboy hat, bandana, and vest. (Shirt, belt, and pants not included) (4 Piece Set)

Style 9832
“Buck Wild”
M, L, XL, XXL

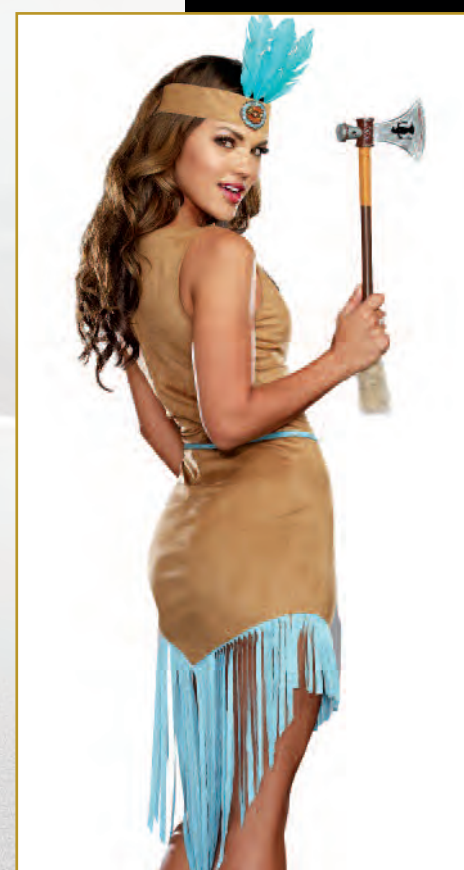
Style 9828

"Native Princess"

S, M, L, XL

Hunting for buffalo was hard for this beauty indeed, because every time she went out, she caused a stampede.

Tan ultra suede dress with authentic Native American beading and high-low fringed hemline. Includes beaded headpiece and belt. (Tomahawk not included) (3 Piece Set)



Style 9413
"Tribal Temptation"
S, M, L, XL

Bright turquoise ultra suede dress with asymmetrical fringed hemline and intricately beaded Native American neckline. Includes beaded headpiece. (2 piece set)

This beautiful native much prefers making "reservations" to hunting buffalo.



The other braves thought it was wrong, that the chief was blessed with an arrow so long.



Style 9189
"Chief Long Arrow"
M, L, XL, XXL

Native American styled ultra suede fringed shirt and pants with feather headdress. (3 piece set)

Style 8216
"Giddy Up"
S, M, L, XL, 1X/2X, 3X/4X

Western style ultra suede cowgirl dress with hook & eye front closure, star grommets, fringe and lace-up detailing. Includes cowboy hat, neck scarf and pin. (Rope not included) (3 piece set)

This sexy cowgirl may look like fun, but you better watch out for her Daddy's gun!



Why is it that every male is always hot on this beauty's trail?



Style 8198
"Hot On The Trail"
S, M, L, XL, 1X/2X, 3X/4X

Native American inspired ultra suede fringed dress with beaded neckline detail. Includes colorfully beaded belt and headpiece. (Jewelry not included) (3 piece set)



Style 5076

"Tribal Princess"

XS, S, M, L

Stretch faux suede dress with feather and turquoise bead trim lace-up neckline and fringe hem. Includes matching feather headpiece, armband and tomahawk. (4 piece set)

Many a warrior she did delight in her teepee late at night.



This Chief wants to show you his pow WOWWWW!!!



Style 8197

"Chief Wansum Tail"

M, L, XL, XXL

Native American styled ultra suede fringed shirt and pants with feather headdress. (3 piece set)

Style 5877

"Pocahottie"

S, M, L, XL, 1X/2X, 3X/4X

Faux suede dress with intricate beaded neckline and layered fringe hem. Includes matching beaded headpiece with feathers. (2 piece set)

How about a little tribal trouble?



This native beauty has such allure, she's reservation royalty for sure.



Style 8196

"Reservation Royalty"

S, M, L, XL

Ultra suede dress has Native American beaded appliqué and fringe detail. Includes a headpiece with feathers and matching beaded appliqué. (2 piece set)



guys & Dolls

Styles 9565, 9834, 9836, 9837 & 9838



She loved to dance the Charleston, and drink lots of whiskey, and so this simply fab flapper always felt very frisky!



Style 9836
"Simply Fab!"
S, M, L, XL
Black velvet and sequin front dress with silver sequin and rhinestone appliqué. Includes sequin ostrich feather headpiece. (Gloves, boa, jewelry, and cigarette holder not included) (2 Piece Set)
(Shown With) Style 5218 "Luna Glove" Black, White O/S



All the flappers loved him, though they knew it wouldn't last; at least for the night, good time Charlie was a blast.



Striped three button front jacket. Includes hat and bow tie. (Shirt and pants not included) (3 Piece Set)
(Shown With) Style 6379 "Men's Basic Pant" Black, White O/S

Style 9838
"Good Time Charlie"
M, L, XL, XXL

Style 9837

"Sophisticated Lady"

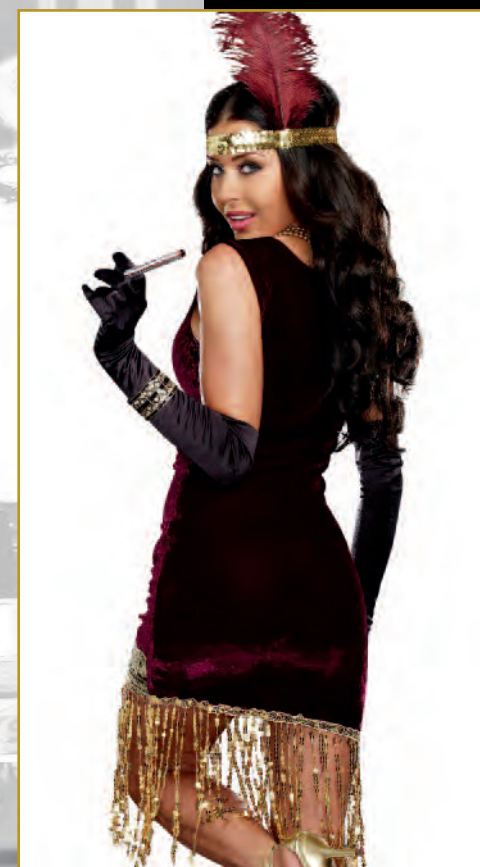
S, M, L, XL, 1X/2X, 3X/4X

*Drinking, smoking, sequins shining bright,
this sophisticated lady loves to dance all night.*

Burgundy velvet dress
with sequin scroll
design has an intricately
embroidered gold
neckline and hemline
trim with sequin fringe.
Includes gold sequin
headpiece with ostrich
feather.
(Gloves, boa, jewelry
and cigarette holder not
included)
(2 Piece Set)



(Shown With)
Style 5218
"Luna Glove"
Black, White
O/S



Style 9834

“Gatsby Girl”

S, M, L, XL

Exquisite red sequin design front dress with stretch velvet back and sequin fringe detailing. Includes stretch sequin headpiece with ostrich feather. (Gloves, boa, jewelry, and cigarette holder not included) (2 Piece Set)

She loved bootleg whiskey and had her hair all in curls; everyone knew she was one of Gatsby’s girls!

(Shown With)
Style 5218
“Luna Glove”
Black, White
O/S





*This party girl
kicked off her
shoes, danced all
night and drank
bathtub booze.*

Silver novelty sequin dress with exquisite 1920's look neckline piece and sequin fringe bottom. Includes stretch silver sequin headpiece with white ostrich feather. (Jewelry, boa, satin gloves and cigarette holder not included) (2 piece set)

Style 9458

"Life's a Party"

S, M, L, XL, 1X/2X, 3X/4X

(Shown With) Style 5218 "Luna Glove"
Black, White O/S



*She is the roaring 20's
flapper with pizazz,
dancin' all night
to Harlem Jazz.*

Sequin 1920's inspired flapper dress with Art Deco styling has layered full fringe bottom. Includes stretch sequin headpiece with ostrich feather and cigarette holder. (Boa, pantyhose, gloves and jewelry not included) (3 piece set)

(Shown With)
Style 5218
"Luna Glove"
Black, White
O/S

Style 7034
"Fishnet Pantyhose"
Black
O/S



*I know a spot where the
gin is cold and the piano is
hot... And all that Jazz.*

Style 8832

"Jazzy Jezebell"

S, M, L, XL

20's inspired sequin dress with keyhole front detail, gold beaded neckline, cluny lace and sequin fringe hemline. Includes matching choker and stretch sequin headpiece with feather. (Boa, cigarette holder and pantyhose not included) (3 piece set)

(Shown With)
Style 5218
"Luna Glove"
Black, White
O/S

Style 7034
"Fishnet Pantyhose"
Black
O/S



*This jazzy doll loves to dance.
You'll fall in love with her with just a
glance.*



Style 9456
"What's Shakin'?"
S, M, L, XL

Red sequin flapper dress has jewel encrusted neckline piece and black sequin fringe bottom. Includes red stretch sequin headpiece with black ostrich feather. (Jewelry, boa, satin gloves, pantyhose and cigarette holder not included) (2 piece set)

(Shown With) Style 7034 "Fishnet Pantyhose" Black O/S
Style 5218 "Luna Glove" Black, White O/S



*Why does everyone have to
make such a fuss? They're just
jealous of dames like us!*



20's style dress with reversible black/red dangling paillettes and black beaded neckline. Stretch sequin headpiece with ostrich feather included. (Jewelry, boa, cigarette holder, gloves and pantyhose not included) (2 piece set)

(Shown With) Style 7034 "Fishnet Pantyhose" Black O/S
Style 5218 "Luna Glove" Black, White O/S

Style 8812
"Dames Like Us"
S, M, L, XL, 1X/2X, 3X/4X





If this sexy gangster is the one you choose, he might make you an offer you can't refuse.



Although she was alluring, they knew it was a shame, because this tempting beauty was a very dangerous dame.



Style 8190
"Gangsta"
M, L, XL, XXL

Black and white pinstripe double breasted gangster suit. Includes a dickie, machine gun screen printed necktie, carnation pin and hat. (Shirt not included)
(6 piece set)



Black and white pinstripe knee-length knit dress with removable carnation and tie with dollar sign. Includes gangster hat and arm garter.
(Cigar, jewelry and money not included)
(4 Piece Set)

Style 9839
"Deadly Dames"
S, M, L, XL, 1X/2X, 3X/4X

Don't be a victim of lust and give
this dirty gangster your trust.



Style 9889
“Dirty Work”
S, M, L, XL

Sleek 40's styled halter dress with back slit and attached red tie.
Includes suspenders, carnation pin, gangster hat and arm garter.
(Cigar, jewelry and money not included)
(5 Piece Set)

Blowing on his dice is sure nice!



Button front longer length pinstripe zoot suit with matching
pants with side pocket and gold chain detail. Includes
adjustable/removable elastic suspenders, matching hat and necktie
with “\$” sign detail. (Shirt not included)
(5 piece set)

Style 8105
“Zoot Suit Riot”
M, L, XL, XXL



You might think this mobster boss is so much fun, until you're staring down the barrel of her gun.



Even though she's usually on the run, this gangster always manages to have her fun.



Style 8188
"Mobster Boss"
S, M, L, XL

Gangster pinstripe knit dress with sexy peak-a-boo scalloped lace neckline and matching shorts. Includes hat with feather, belt, carnation pin and choker. (Thigh highs and stocking toppers not included) (6 piece set)

Black with white pinstripe vest has an attached red carnation and lattice back detail. Includes matching pants, pinstripe hat and arm band with sequin dollar sign appliqué. (Necklace and money not included) (4 piece set)

Style 9459
"Crime Time"
S, M, L, XL

Why Heroes



Style 9858 & 9867



This DEA Agent doesn't mean to stare, but she wants to know what you're hiding in your underwear.



Style 9858
"DEA Secret Agent"
S, M, L, XL
Shiny black stretch knit romper with zip-front detailing and shiny vinyl buckles has DEA patches and attached/adjustable garters. Includes belt, leg garters, police radio/speaker, and DEA hat. (Gloves, thigh highs, baton, handcuffs, and sunglasses not included) (5 Piece Set)

This DEA agent hated to be rude, but to do a proper search, his suspects needed to be nude.



Black police shirt with DEA patches. Includes DEA hat and "Agent Phil Mypockets" nameplate. (Baton, belt, glasses, and pants not included) (3 Piece Set)
Style 9867
"DEA Agent Phil Mypockets"
M, L, XL, XXL

This prison guard walks the beat, looking for inmates who look pretty sweet.



Style 9947

“Prison Guard Hugh B. Guilty”

M, L, XL, XXL

Blue button-front prison guard shirt. Includes badge, “Prison Guard Hugh B. Guilty” nameplate, belt, handcuffs and radio/speaker. (Pants not included) (6 Piece Set)

(Shown With) Style 6379 “Men’s Basic Pant” Black, White M, L, XL, XXL

Hardened criminals never get very far, when Officer Randi handcuffs them in her squad car.



Navy blue button-front dress with shiny black vinyl trim. Includes authentic looking police patches, badge, “Officer Randi Stopsign” nameplate, belt, police radio/speaker, handcuffs, and hat with badge. (Baton not included) (7 Piece Set)



Style 9905

“Officer Randi Stopsign”

S, M, L, XL

Style 9857
“Don’t Stop Cop”
S, M, L, XL

Body contouring stretch bengaline dress with authentic looking police patch and detailing. Includes “Office Sheila B. Trouble” nameplate, badge and belt. (Baton, earrings, glasses, and handcuffs not included) (4 Piece Set)

If this sexy cop comes your way, you might just have an indecent exposure ticket to pay



This sexy prisoner loves doing time and anything else that comes her way.



Style 9505

“Locked Up!”

S, M, L, XL, 1X/2X, 3X/4X

Sexy stretch knit, zip front romper has “Department of Corrections” screen print. Includes belt with removable handcuffs, prison ID pin, booking card, and two-way zip skirt with “Guilty” screen print on the back. (Fingerless gloves not included)
(5 piece set)



Sergeant Dick Spectacular was his name. Once he handcuffed you, you were never quite the same.



Black cotton long sleeve work shirt with police patches on both shoulders and the chest. Includes police hat with badge, police badge pin, and “Sergeant Dick Spectacular” nameplate.
(Belt, baton, walkie-talkie, sunglasses and handcuffs not included)
(4 piece set)

Style 9438

“Sgt. Dick Spectacular”

M, L, XL, XXL

Style 9444
“Special Ops”
M, L, XL, XXL

Black heavy duty vest has bullet holders, utility pockets, SWAT Police back screen print and special SWAT patch. Includes dickey with face mask and arm band with embroidered Special Ops patch. (Pants, handcuffs, baton, helmet and sunglasses not included.) (3 piece set)

(Shown With)
Style 9529
“Special Ops Helmet”
O/S



This elite agent loves finding hardened criminals.



Style 9441
“Traffic Stopping Cop”
S, M, L, XL

Zip-front black knit dress has pink vinyl trim and police patches. Includes “Officer Anita Bigone” nameplate, pink shiny vinyl police hat with badge, pink vinyl belt, police badge pin and handcuffs. (Fingerless gloves and baton not included) (6 piece set)

(Shown With)
Style 7034
“Fishnet Pantyhose”
Black
O/S



Style 9443
“Special Ops”
S, M, L, XL
Sleek and sexy black jumpsuit with buckle front detailing and Special Operations patch. Includes bullet belt. (2 piece set)

Style 8816

“Dirty Cop Officer Anita Bribe”
S, M, L, XL, 1X/2X, 3X/4X

Black bengaline stretch knit dress with belt and police patches on shoulders. Costume includes police hat with badge pin, “Officer Anita Bribe” name plate and removable police badge. (Sunglasses, handcuffs, pantyhose and baton not included)
(5 piece set)



(Shown With)
Style 7034
“Fishnet Pantyhose”
Black
O/S



Even fugitives on the run, thought getting arrested by this sexy cop, would be kind of fun!



Corruption was his middle name. Banging heads was his game.



Style 8817

“Dirty Cop Officer Ed Banger”
M, L, XL, XXL

Black sleeveless collared shirt with front pockets, police patch and removable neck tie. Includes police hat with badge pin, “Officer Ed Banger” name plate, removable police badge and arm band. (Sunglasses, handcuffs, baton and pants not included)
(6 piece set)

Style 8866

“Officer Sheila B. Naughty”
S, M, L, XL

Navy romper with police patches and two-way zip front skirt. Includes belt, police hat with badge, and “Officer Sheila B. Naughty” name plate. (Sunglasses, handcuffs and baton not included)
(5 piece set)



Even though they were going to be in a jail cell down town, no one ever minded her patting them down.



Convertible

Just when you thought this cop could be trusted, he’ll pat you down and say, “You’re Busted!”



Style 5150

“You’re Busted! Policeman”
M, L, XL, XXL

Button front shirt with badge. Includes hat, removable “Officer Oliver Clothesoff” name badge, belt, handcuffs and baton. (Sunglasses and pants not included)
(6 piece set)

Style 9888

“Light My Fire”

S, M, L, XL

Shiny black long sleeve jumpsuit with front zipper and hook closure has red and silver trim with authentic looking fire patches. Includes belt and adjustable red fire hat. (3 Piece Set)

*Are you burning with desire?
Maybe this fire fighter can put out your fire.*



Style 9887

"Too Hot to Handle"

S, M, L, XL

Just call 911 and this fire fighting beauty will be on the run for a little fun.

Shiny black long sleeve stretch knit dress has front zipper with silver hook front closure. Dress is trimmed with yellow and silver and has authentic looking fire patches. Includes adjustable belt and red fire hat. (3 Piece Set)



One look at this sexy fire fighter and you'll be filled with desire. You might even be tempted to start your own fire.

This smokin' hot fireman always comes equipped with his long hose ready.

Convertible



Style 9445
"Where's the Fire"
S, M, L, XL

Long sleeve red stretch knit romper has Fire Department patches and zip front detailing. Includes matching skirt, fire fighter hat and belt. (Boot toppers not included)
(4 piece set)



Buckle front jacket with reflective tape trim detail. Includes knit tank top with "Fire Department" heat transfer and fireman hat.
(Pants not included) (3 piece set)

(Shown With) Style 6379 "Men's Basic Pant" Black, White
O/S

Style 6550
"Smokin' Hot Fireman"
M, L, XL, XXL



The only thing that this coroner does dread, is that most of the people he sees at work are, unfortunately, dead.

Style 9966

“Coroner Noah Pulse”

M, L, XL, XXL

Black lab coat with “Coroner” screen print, “Medical Examiner Noah Pulse” nameplate and back “Coroner” screen print with thumbprint. Includes mask.
(Shirt and pants not included)
(3 Piece Set)

(Shown With)
Style 6379
“Men’s Basic Pant”
Black, White
O/S



Style 9964
"Night Nurse"
S, M, L, XL, 1X/2X, 3X/4X

Retro-styled white knit over-the-knee length nurse dress with red button front. Includes nurse hat, belt, capelet, and "Nurse Marian A. Docta" nameplate. (5 Piece Set)



All her patients couldn't help but stare, when she gave them tender love and care.



Her patients never stopped coming throughout the day, they knew this sexy nurse would make their aches and pains go away.

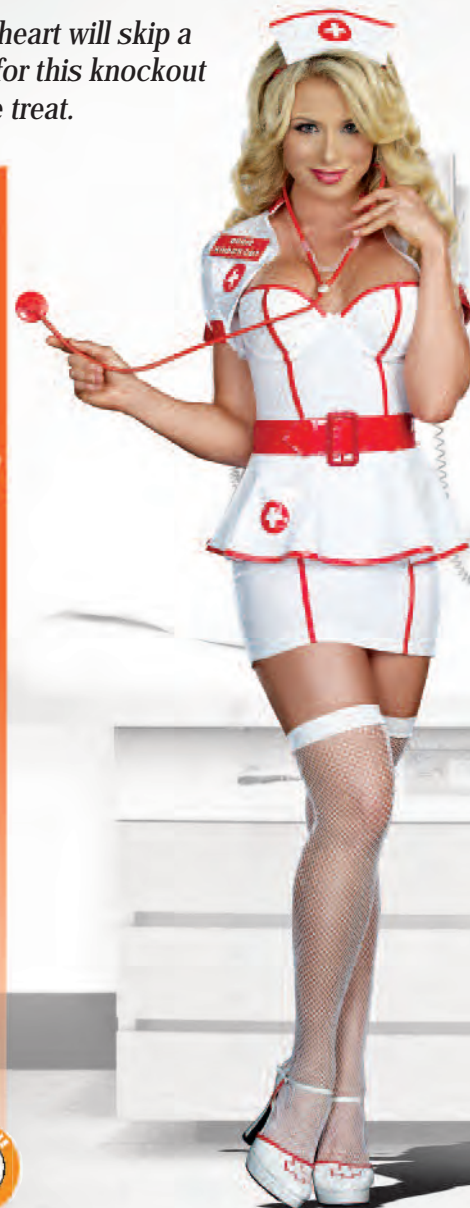


Body shaping bengaline nurse dress includes apron, headpiece, novelty stethoscope and "Nurse Jess Bendover" name plate.
(Thigh highs and stocking clips not included)
(5 piece Set)

Style 9410
"Nurse Jess Bendover"
S, M, L, XL

Your heart will skip a beat for this knockout nurse treat.

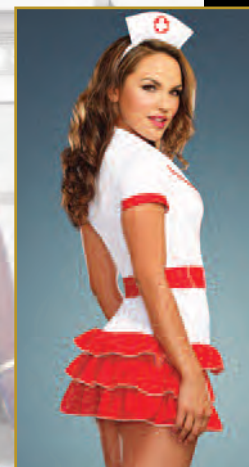
Convertible



Retro styled stretch Bengaline dress with lightly padded underwire cups and peplum detail. Includes separate jacket with faux vinyl piping and cross detail, stethoscope, belt and nurse hat. Includes removable/adjustable shoulder straps and "Nurse Knockout" name badge. (Thigh highs not included)
(6 piece set)

Style 8100
"Nurse Knockout"
S, M, L, XL

Nurses take temperatures and this one's no exception. Just look at her once, and you'll wish you had an infection.



Nurse uniform has red ruffle detail and medical cross screen prints. Includes nurse hat, belt, and stocking topper bow pins. (Thigh highs not included)
(4 piece set)

Style 9504
"Hospital Hottie"
S, M, L, XL, 1X/2X, 3X/4X



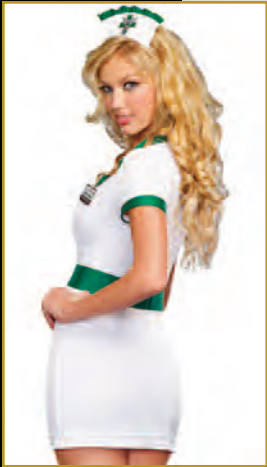
(Shown With)
Style 7031
"Sheer Thigh High"
Black, Red, White
O/S



Style 9435
"Nurse Anita Reefer"
S, M, L, XL

White nurse's uniform with green accents and cross screen prints. Includes nurse's hat, belt, "Nurse Anita Reefer" name plate, and stocking topper bow pins. (Thigh highs not included) (5 piece set)

Once she takes a look at your case, this helpful nurse can put a smile on your face.



Style 9411
"Dr. Bud Smoker"
M, L, XL, XXL

Men's lab coat with front and back screen print. "Dr. Bud Smoker" name plate included. (Pants, shirt, paper and pen not included) (2 piece set)

This is your lucky day, Dr. Bud Smoker is going to make your problems go away.



She's the dame with the perfect aim!



Style 9420
"Flight Risk"
S, M, L, XL

Black zip front romper with patches and contrast detailing. Includes pilot's hat, novelty belt, and two-way zip front skirt with screen prints. (Sunglasses and fingerless gloves not included) (4 piece set)



Convertible



She was more than willing to do her duty, but no one wanted to go to war with this elegant beauty.

Navy blue stretch knit military dress with authentic looking patches, combat ribbon and gold military buttons. Includes hat, belt and commendation medal. (Cigar, gloves and jewelry not included) (4 Piece Set)



Style 9869
"Army Brat"
S, M, L, XL, 1X/2X, 3X/4X

Halter dress with army patches, military buttons and gold trim detailing. Includes shrug with Army screen print, bullet belt and hat. (Jewelry not included) (4 Piece Set)

This military cutie is an All American beauty!





High Seas

Styles 9871 & 9872

This sexy pirate is quite a cutie. Everyone's after her fabulous booty.



Style 9871
"Sea Worthy Pirate"
S, M, L, XL

Brown distressed leather look vest with attached peasant top and gold trim detailing. Includes black leather look pirate's hat and shiny knit capri pants with cuffs. (Earrings and sword not included) (3 Piece Set).

When out to sea looking for treasure, this pirate has brought many a wench pleasure.



Brown distressed leather look vest with gold detailing. Includes pirate's tunic top, distressed leather look head wrap, striped waist sash and belt. (Pants and sword not included) (5 Piece Set)
(Shown With) Style 6379 "Men's Basic Pant" Black, White
M, L, XL, XXL

Style 9872
"Sea Worthy Pirate"
M, L, XL, XXL

Style 9892

"Rock My Ship"

S, M, L, XL

*Rocking the boat could be such a
blast, if only those voyages weren't
over so fast.*

Velvet pirate's dress with
underwire foam cups,
pleated white trim and
gold sequin accents.
Includes matching long
sleeve shrug and pirate's
hat with feather.
(Sword and petticoat
not included)
(3 Piece Set)

(Suggested Accessory)
Style 4582
"Ursula Petticoat"
Black, White
O/S



Style 9861
"Sailor's Delight"
S, M, L, XL

Sailor dress with underwire foam cups, attached sailor collar, hidden detachable halter shoulder strap, and attached/adjustable garters with silver metal anchors. Includes belt with sequin anchor appliqués, sailor hat, and wrist cuffs. (Earrings and thigh highs not included) (5 Piece Set)

When this cutie sets sail, many hearts she will steal.



Convertible

*This adorable sailor
always makes a
splash.*



Navy satin dress with waist sash belt, sequin appliqués along the hemline and an attached red petticoat. Includes sailor hat and cuffs. (Earrings not included)
(4 piece Set)

Style 9439

"Shore Thing"

S, M, L, XL, 1X/2X, 3X/4X



*There's no place a
sailor would
rather be, then with
this pin-up girl
out at sea!*



Retro pin-up style sailor dress with front shirring and layered ruffled back. Includes matching sailor hat, striped thigh high stockings with anchors and removable/adjustable garters.
(4 piece set)

Style 8818

"Sailor Pin-up"

S, M, L, XL



*This sailor sweetie
drives Longshoremen
crazy!*



Stretch knit dress with lightly padded underwire cups, contrast navy piping and gold foil bows on neckline and gold foil bow hem trim with printed anchor accents. Includes matching long sleeved shrug with foil star detail and sailor hat with anchor and gold foil bow.
(3 piece set)

Style 5985

"Makin' Waves"

S, M, L, XL, 1X/2X, 3X/4X



This naughty sailor is such a flirt, when manning her ship, she takes off her skirt!



Convertible



Style 9440
"Ship Shape"
S, M, L, XL
Navy romper with sailor collar has embroidery design on hip and removable red necktie that can also be worn as a waist sash. Includes matching satin pleated skirt with anchor buttons, sailor hat, cuffs, and stocking topper bow pins with anchors. (Stockings not included)
(6 piece set)



Many a pirate did she pleasure, when she shared her buried treasure



Pirate dress with attached black velvet scroll printed vest, red lace peasant style top with layered bell sleeves and attached high-low hemline petticoat. Pirate hat included. (Sword and pantyhose not included) (2 piece set)
(Shown With) Style 7034 "Fishnet Pantyhose" Black O/S

Style 8867
"Treasure Pleasure"
S, M, L, XL, 1X/2X, 3X/4X



battle of the Warriors

Style 9846



Taking a slice out of crime,
one sword fight at a time!



Style 9846
"Knight Time"
S, M, L, XL
Silver metallic dress with chainmail armor-look hood and mesh sleeves. Intricately embroidered two-headed dragon appliqué and black stud detailing. Includes knee pads. (Sword, gauntlets and shield not included)
(2 Piece Set)

This handsome knight is hot that's
true, but he can also slay a dragon
for you.



Silver metallic hooded medieval tunic with exaggerated shoulder armor detailing, double dragon embroidered appliqué and screen printed metal studs. Includes fingerless gloves and belt. (Sword and shield not included)
(3 Piece Set)
(Shown With) Style 6379 "Men's Basic Pant" Black, White
M, L, XL, XXL

Style 9968
"Knight Time"
M, L, XL, XXL

This naughty warrior would much rather play, than slay dragons and fight battles everyday.

Warrior dress with silver screen prints and detailing has strategically placed zipper across skirt hemline, which allows the dress to go from long to short. Includes elaborate wrist gauntlets and headpiece.
(Sword and earrings not included)
(3 Piece Set)

Convertible



Slaying the king seemed like it would be easy, but chopping off his head made this warrior queasy.



Style 9824
"The King Slayer"
S, M, L, XL, 1X/2X, 3X/4X

Shimmering blue and black velvet dress with silver sequin detailing and embroidered crest has attached velvet cape. Includes wrist gauntlets and rhinestone headpiece. (Sword not included) (3 Piece Set)



The women of his village would never tattle, about what this warrior liked to do when he came home from battle.



Distressed faux black leather with metallic blue tunic and embroidered crest has an attached velvet cape. Includes wrist gauntlets. (Sword and pants not included) (2 piece set)
(Shown With) Style 6379 "Men's Basic Pant" Black, White
M, L, XL, XXL

Style 9825
"The King Slayer"
M, L, XL, XXL



*Taking the throne is easy, it's true,
when you look like this warrior, there's
nothing you can't do.*

Style 9886

"Queendom Come"

S, M, L, XL

Exquisite metallic stretch knit dress has an alluring neckline detail, high slits, and pleated front satin inset. (Sword, bracelet, and wig not included) (1 piece set)

(Shown With)

Style 9898

"Warrior Queen Wig"
O/S



Fighting dirty was her way,
winning battles day after day.



Style 9827
"Victorious Beauty"
S, M, L, XL
Faux distressed brown leather dress with gold detailing. Includes matching brown velvet cape with fur collar. (Sword not included) (2 Piece Set)

It wasn't from fear that all the
women of his kingdom couldn't
help but stare.



Style 9409
"Dragon Warrior King"
M, L, XL, XXL
Brown distressed leather look tunic with contrast waistband and long brown velvet cape with faux fur collar, detachable straps and attached crossed warrior bands. (Sword, gloves, shield and pants not included) (2 piece Set)
(Shown with) Style 6379 "Men's Basic Pant" Black, White
M, L, XL, XXL

Style 9404

“Queen of Swords Warrior”

S, M, L, XL

Gold and black foil dress with unique chainmail armor print, metal stud trim and gold cross appliqué. Includes headpiece and wrist gauntlets. (Sword and shield not included)
(3 piece set)



This warrior always has such fun, she parties it up when the battle is won.

This warrior always has time for fun, even though there are battles to be won.



Convertible corset style dress with lightly padded underwire cups, adjustable shoulder straps and attached jeweled belt. The strategically placed zipper across skirt hemline allows the dress to go from ankle length to short and sexy. Once unzipped, the bottom of the dress can be worn as a cape. Includes wrist gauntlets, sword and headpiece. (4 piece set)

Style 9405

“King of Swords”

M, L, XL, XXL

Gold and black chainmail armor-look knit tunic with embellished cross appliqué crest, attached cape and sash. (Sword, gloves, shield and pants not included)
(1 piece Set)



This warrior knew it couldn't be a sin, if cutting off heads would allow him to win.

Hercules! Hercules! Hercules!



Distressed brown leather look tunic has gold trim detailing, attached belt and red cape. Includes wrist gauntlets and arm tie. (Sword and shield not included)
(3 piece set)

Style 8181

“Remember the Trojans”

S, M, L, XL

“Hercules”

M, L, XL, XXL

Style 9407
"Scandalous Sword Warrior"
S, M, L, XL, 1X/2X, 3X/4X

Black velvet dress with high-low hemline, silver sequin waistline and hem trim, embellished and embroidered Royal Lion silver crest and attached long red chiffon sash. Includes rhinestone headpiece and silver lamé armbands. (Sword not included) (3 piece set)



Clearly this warrior has no shame, creating scandal has always been her game.

Style 8971
"Warrior of Darkness"
S, M, L, XL

Stretch knit black reptile imprinted dress with glossy stretch vinyl accents and front zipper. Includes wrist gauntlets and adjustable jeweled headpiece. (Sword not included) (3 piece set)



Out into battle this beauty would roam, and then all of the warriors would follow her back home.



When you see this warrior beauty, you will know from the start, that when she goes to battle, she will conquer every heart.



Style 9487
"Dragon Warrior Queen"
S, M, L, XL

Shimmering gold foil printed turquoise knit dress with gold sequin dragon appliqué has attached gold foil printed turquoise cape. Includes gold lamé wrist gauntlets. (Sword not included) (2 piece Set)



mythical Magic

Style 9875

*She's an ethereal beauty
who's come from above,
looking for the perfect man
to love.*



Style 9875
"Goddess of Delight"
S, M, L, XL

Exquisite white chiffon dress with gold fleck print has unique high-low hemline and attached gold sashes. Includes gold leaf headpiece and armbands. (Jewelry not included)
(3 Piece Set)

*Every inch of this
mighty God
is simply heavenly!*



White tunic with gold satin attached cape and matching trim. Gold leaf headpiece, removable belt and wrist gauntlets included.
(4 piece set)

Style 8860
"He's a God"
M, L, XL, XXL

Style 9899

"It's Greek to Me"

S, M, L, XL

Bringing love and pleasure to all she meets, this ravishing goddess is quite a heavenly treat.

White asymmetrical gown with attached gold metal belt, medallion, and attached gold sashes.

Includes gold leaf headpiece and adjustable arm bands.

(3 Piece Set)



This exquisite sea creature had such glam, she created a tsunami wherever she swam!



Style 9853
“Sea Goddess”
S, M, L, XL
Turquoise gown with shell shaped underwire foam cups, sheer peplum and sequin shell appliqué detailing. Includes armbands with trailing chiffon and removable, adjustable shoulder straps.
(Headpiece not included) (3 Piece Set)
(Shown With) Style 9515 “Shimmer Rhinestone Headpiece”
O/S



He is handsome and powerful and the God of the Sea; in his strong arms is where women want to be.

Tunic with attached sash has gold trident detailing. Includes crown, belt, and wrist gauntlets. (Trident not included)
(4 Piece Set)

Style 9854
“Poseidon”
M, L, XL, XXL

Style 9961

"Unicom Fantasy"

S, M, L, XL

*This beautiful unicorn you might want
to chase, if you catch her she'll take
you to a magical place.*

Multi-colored
shimmering metallic
dress with silver sequin
trim, full length
attached sheer metallic
mesh pieced skirt, and
removable/adjustable
shoulder straps.
Includes removable tail
and unicorn
headband.
(Jewelry not included)
(4 Piece Set)



This exquisite beauty is filled with wit, but get too close to her head, and you might get bit.



Style 9442
“Medusa”
S, M, L, XL, 1X/2X, 3X/4X

Sexy green metallic knit gown has a unique high-low hemline, gold sequin snake appliques crossing the plunging neckline meeting at the open center, and attached gold mesh sashes with gold sequin snake appliques. Waistband is pleated with sequin detailing. Includes moldable snake headpiece and gold lamé armbands. (Earrings not included)
(3 piece set)

This elegant beauty is all ears.



Gold foil printed white stretch knit dress with gold sequined neckline applique, attached golden sheer hood, open floor length sleeves and skirt that opens from the front and back. Includes latex elf ears and adjustable golden medieval headpiece.
(Jewelry not included)
(3 piece set)

Style 9450
“Elf Princess”
S, M, L, XL

When this fairy comes to you, psychedelic dreams and wishes will come true.



Psychedelic fairy dress has neon pink and green sequin fabric with multi colored attached sparkly tutu. Includes fairy wings and removable/adjustable shoulder straps. (Wand, wig, fingerless gloves, jewelry, thigh highs and boot covers not included) (3 piece set)

(Shown With) Style 8978 "Neon Fishnet Thigh Highs" Neon Pink O/S
(Shown With) Style 9193 "Boot Covers" Pink O/S

Style 9566
"Rainbow Fairy"
S, M, L, XL

Life can be heavenly, and that is true, with an angel like this watching over you.



Style 9449
"Angel Baby"
S, M, L, XL

Silver stretch lamé underwire foam cup dress with sequin trim and attached white with silver sparkle skirt. Includes marabou feather halo headband and white feather angel wings. (Earrings not included) (3 piece set)

This ethereal beauty seems to have dropped from above, she is Aphrodite, the goddess of love!



Style 8861
"Goddess of Love, Aphrodite"
S, M, L, XL

Goddess dress with gold sequined embroidery and trim. The strategically placed zipper across skirt hemline allows the dress to go from ankle length to short and sexy. Once unzipped, the bottom of the dress can be worn as a cape. Rhinestone headpiece and gold arm bands included. (4 piece set)



Convertible



Hot Haunts



Styles 9903, 9904, 9945, 9946 & 9967



By day she sleeps 6 feet deep. By night she does the graveyard creep.

He's always out knocking over graveyard stones, hoping to find someone who will jump his bones.



Style 9903
"Ms. Bones"
S, M, L, XL
Exquisite skeleton screen print dress has stretch bodice with attached full-layered tulle and satin skirt. Includes skeleton screen print fingerless gloves. (Hat and jewelry not included) (2 Piece Set)
(Shown With) Style 10005 "Ms. Bones Hat"
O/S



Black velvet jacket with red tattered edges has an attached shirt front with skeleton print. Includes collapsible hat with skull and skeleton fingerless gloves. (Cigar and pants not included) (3 Piece Set)

Style 9904
"Mr. Bones"
M, L, XL, XXL



*This troubled groom didn't see,
how long death 'til you part
could actually be.*



*She still haunts the graveyard in
her wedding dress. Who knew her
wedding day would have been such
a mess?*

Style 9946
"Groom of Doom"
M, L, XL, XXL

Gray tattered jacket with spider web mesh and skull buttons.
Includes collapsible hat and shirt front dickey with bow tie.
(Pants not included)
(3 Piece Set)

Gray tattered gown with skeletal ribcage print and full layered tulle
overskirt. Roses adorn the neckline and dropped waistline. Includes
tattered gray veil headband with roses, and choker with skull.
(Thigh highs not included)
(3 Piece Set)

Style 9945
"Bride of Doom"
S, M, L, XL

Style 9878

“To Die Over”

S, M, L, XL

Exquisite flocked corset styled dress with high-low hemline, metallic mesh ruffled skirt, and sequin neckline detail. Includes detachable cape with vampire collar. (Gloves, jewelry, and pantyhose not included) (2 Piece Set)

(Shown With)
Style 5218
“Luna Glove”
Black, White
O/S



*Although this vamp is looking sweet,
better stay back, or you’ll be
her next treat.*





Although this witch could bring you doom, she's the hottest thing to ever fly on a broom!

Style 9890

"Witchy Woman"

S, M, L, XL

Black velvet dress with large hook and eye front trim, corset styling and a full spider lace skirt with high-low hemline and attached petticoat. Includes witch hat with spider lace, finger loop spider lace gloves and stocking topper bow pins.
(Thigh highs, petticoat, and jewelry not included)
(4 Piece Set)

(Shown With)
Style 7031
"Sheer Thigh High"
Black, Red, White
O/S



Style 9866

“Dirty Devil”

S, M, L, XL

Red “sizzling hot” stretch metallic romper. Includes removable/adjustable shoulder straps, devil horn headband, and devil’s tail. (Gloves, earrings, and trident not included) (4 Piece Set)

(Shown With)
Style 5218
“Luna Glove”
Black, White
O/S



*At first, dating this girl might go really well,
until you find yourself spending way too
much time in hell.*



*You might think dating this hot beauty
is okay, but get her mad and there will
be hell to pay!*

Style 9877
“Hell Raising Hottie”
S, M, L, XL

Devilishly hot red stretch
metallic dress with
sequin foam underwire
cups, lace-up neckline
detail, asymmetrical
hemline, and an attached
devil’s tail. Includes
removable/adjustable
shoulder straps and
sequin devil’s horn
headband. (Finger loop
gloves, earrings and
trident not included)
(3 Piece Set)



Style 9427
"Voo Doo Priestess"
S, M, L, XL

Black ultra suede dress with underwire foam cups and high-low hemline has skull and animal print detailing. Includes feather headpiece, bone necklace and arm wraps. (4 piece set)

*She's quite tempting
- that is true - until
she puts a spell on
you!*



*For a night of forbidden
ecstasy, come along with
wicked me.*



Style 9461
"Sorcery & Seduction"
S, M, L, XL, 1X/2X, 3X/4X

Purple velvet dress with silver star and moon print, silver sequin trim detailing, silver lamé hood, and a high-low hemline. Includes waist sash with tassels. (Magic wand not included) (2 piece Set)

*If you're going to
make this
sorcerer mad,
you better think
twice, she'll turn
you into
something that's
not very nice!*



Style 9428
"Wicked Me"
S, M, L, XL



Black dress with patterned sequin bodice, open front tattered overskirt, sheer gauntlet sleeves with black claw-like shoulder extensions and witch's hat. (Necklace and pantyhose not included) (2 piece set)

(Shown With) Style 7034 "Fishnet Pantyhose"
Black O/S

This sexy creature might get awfully chummy, but get too close and you'll be crying for your mummy!



White tattered dress with sexy plunging neckline. Headpiece and bandage sleeves included. (3 piece set)

Style 8820
"Mummy Dearest"
S, M, L, XL

You might think this beauty is quite a sight, until you try to kiss her, and she gives you a bite.



Black and red velvet Victorian styled dress with high-low hemline has an exquisite sequined, embroidered neckline piece, vampire collar and sheer black chiffon sleeves. (Jewelry and thigh highs not included) (1 piece set)



This sexy vampire can be such a fright, when he pulls you close and takes a bite!



Style 8177
"Just One Bite"
M, L, XL, XXL
Black velvet vampire waistcoat with contrast satin lapels and cuffs. Front lapels have gothic embroidered satin appliqué crosses with rhinestones. Coat back has embroidered fiber optic light-up cross. Includes a white satin ruffle dickie, instructions, hidden pocket for on/off switch and batteries. (Shirt and pants not included) (2 piece set)

(Shown with)
Style 6379
"Men's Basic Pant"
Black, White
M, L, XL, XXL



animal

Instincts

Style 9959





Style 9959

“Cat Fight”

S, M, L, XL

Metallic black sexy, stretchy zip-front jumpsuit with ripped front pant leg detailing and attached tail. Includes headpiece with mask and belt. (Whip and jewelry not included)
(3 Piece Set)

Out at night this feline likes to prowl, you'll know when she's finished because she lets out a howl.



Style 9963

"Jungle Jammin"

S, M, L, XL

She's quite a howl until she starts to growl.

Adorable stretch velour hooded romper with tiger ears and whiskers has front zipper and faux fur trim. Includes tail and fingerless paw print gloves. (3 Piece Set)



Style 9980

“Strut Your Stuff”

S, M, L, XL

Magnificent multi colored sequin peacock design bodice has an attached multi-layer sheer ruffled bottom. Includes removable/adjustable straps, peacock feather headpiece with jewel, and detachable peacock tail in layers of bright colored mesh. (Jewelry not included) (4 Piece Set)

Don't be jealous of this beautiful bird, peacock envy is normal, or so we've heard.



Style 9896

"Lucky Ducky"

S, M, L, XL

Taking a bubble with this duck could be trouble!

Zip-front stretch panne velvet dress with attached adorable duck face hood has faux fur trim along hemline, peplum, hood and sleeves. Includes belt with bow, mittens and shoe covers. (4 Piece Set)



This adorable penguin loves to have fun, lounging on a snow bank having a cold one.



She wants to hang out in the bamboo with you!



Style 9486
“Just Chillin”
S, M, L, XL
Zip-front velvet dress with attached penguin face hood and figure-flattering color block bodice has faux fur trimmed hood, sleeves and hem. Includes belt, mittens, pink scarf, and boot covers. (5 piece set)
(Suggested Accessory) Style 4582 “Ursula Petticoat” Black, White O/S

Style 8793
“Panda Bear Baby”
S, M, L, XL, 1X/2X, 3X/4X
Zipper front stretch velvet dress with faux fur trimmed hood, panda bear face and pom pom ties. Includes matching paw print mittens, faux fur trimmed boot covers and attached tail. (3 piece set)
(Suggested Accessory) Style 4582 “Ursula Petticoat” Black, White O/S

*This naughty kitty
loves to growl,
late at night when
she's out on the prowl.*



Leopard print stretch crush velvet hooded dress with fur trim and removable tail. Includes boot covers.
(3 piece set)

Style 8760

"Cheetah-luscious"

S, M, L, XL, 1X/2X, 3X/4X

*Watch out for this
butterfly, she'll break
your heart and
make you cry!*



Style 8170

"Monarch Fairy"

XS, S, M, L

Custom designed monarch butterfly print satin dress with adjustable halter neckline, sexy sheer stretch mesh side and back cut-outs and slit butterfly wing like hemline. Includes next generation LED light up monarch butterfly wings and matching antennae. Batteries and instructions included. (Petticoat and pantyhose not included)
(3 piece set)



*Watch this zebra prance
and you'll get your chance.*



Style 8147

"Zebralicious"

XS, S, M, L

Punk inspired zip-front stretch knit zebra print pantsuit has faux fur trimmed hood with ears and Mohawk wig hair mane. Includes flattering waist cinching corset with boning and back stud detail with matching removable tail.
(3 piece set)



once upon a time

Style 9908



Who's been painting my roses red?
All I can say is, "Off with her head!"

Style 9908
"Queen of Hearts"
S, M, L, XL

Magnificent black velvet gown with sequin embellished neckline piece, heart shaped appliques, attached petticoat, and attached red satin cape with heart shaped collar. Includes jeweled crown and choker. (Gloves, jewelry, thigh highs, stocking bow pin, and scepter not included) (3 Piece Set)

(Shown With)
Style 5218
"Luna Glove"
Black, White
O/S

Style 4582
"Ursula Petticoat"
Black, White
O/S



Style 9876

“Robin Hood”

S, M, L, XL

Rich green velvet corset styled dress with gold lace-up trim detailing and attached petticoat. Includes matching satin cape, hat with ostrich feather and removable/adjustable shoulder straps. (Hair ties and bow not included)
(4 Piece Set)

*You might think this beauty is all good,
until she goes out to rob your hood.*





Looking for a little fun?
This huntsman has got the right equipment
to get the job done.

Style 9907
"The Huntsman"
M, L, XL, XXL

Distressed brown leather look tunic with attached sage green sleeves and hood. Includes belt with loop for hunting knife, wrist gauntlets, utility strap for holding knives and arrows, and two faux knives.
(Bow, arrows, hunting knife, and pants not included)
(5 Piece Set)

(Shown With)
Style 6379
"Men's Basic Pant"
Black, White
M, L, XL, XXL



Style 9979
"Happily Ever After"
S, M, L, XL

Rich pink dress with gold sequin trim, attached back sashes, and rose printed open front over skirt. Includes gold tiara with pink stones. (Jewelry, gloves, and thigh highs not included) (2 Piece Set)

(Shown With)
Style 5218
"Luna Glove"
Black, White
O/S



This princess thought it was a little dumb, that she had to wait so long for her prince to come.



Style 9897

"The Ice Queen"

S, M, L, XL

*This beautiful Ice Queen seemed hot
to me, but the truth was she was as
cold as can be.*

Blue stretch velvet gown
with silver sparkle
snowflake print, attached
back cape sections,
elaborate silver sequin
neckline appliqué and
high side slit with sequin
trim. Includes crown.
(Jewelry, hair bow,
and snowflake scepter
not included)
(2 Piece Set)



Style 9895

“Goldilocks”

S, M, L, XL, 1X/2X, 3X/4X

Adorable fairytale dress in black velvet with gold satin ruffles has unique sequined daisy trim along its lace-up bodice and a built-in petticoat. Attached apron has three sequined bear appliqués and is framed with black ric rac. Includes full-length hooded gold satin cape. (Hair ribbons, gloves, additional petticoat and thigh highs not included) (2 Piece Set)



(Shown With)
Style 5218
“Luna Glove”
Black, White
O/S

(Suggested Accessory)
Style 4582
“Ursula Petticoat”
Black, White
O/S



This bed hopping beauty went through life without cares, until she had a little tangle with three angry bears.





The fairytale does tell, if your grandma suddenly has a deep voice, big eyes and mouth, you may want to run like hell.



Beautifully detailed fairytale dress includes underwire foam cups with pleated ruffles, embroidered heart trim, and lace-trimmed apron. Includes full length hooded satin cape. (Basket, thigh highs, additional petticoat, and satin gloves not included)
(2 piece Set)

Style 9477

"Little Red"

S, M, L, XL, 1X/2X, 3X/4X



Who's afraid of the Big Bad Wolf?

Style 9493

"Big Bad Wolf"

M, L, XL, XXL

Men's red and black check jagged edge tunic with faux fur hood with wolf ears. Includes fingerless gloves.
(Pants not included)
(2 piece Set)



She'll let out a howl when she's on the prowl.

Style 7497

"Big Bad Sexy Wolf"

S, M, L, XL, 1X/2X, 3X/4X

Zipper front stretch crushed velvet dress with faux fur trimmed hood with pom pom ties, attached ears and tail. Includes faux fur trimmed boot covers.
(2 piece set)

Style 9474

“Fairytale Prince”

M, L, XL, XXL

Tunic with gold embroidered royal crest, gold fringed epaulets and matching belt. Includes elastic waist pants with gold trim. (3 piece Set)

Finding a princess can be hard to do, not every fair maiden can fit in that glass shoe!



Every princess knows they must be pretty and clever, or finding a prince might just take forever!



Style 9473

“Having a Ball”

S, M, L, XL, 1X/2X, 3X/4X

Blue satin dress with jeweled neckline trim, high-low hemline, sheer puff sleeves and sparkly print skirt. Includes crown. (Jewelry, satin gloves and thigh highs not included) (2 piece set)

(Shown With)
Style 7030
“Sheer Thigh High”
Black, White
O/S, O/S Queen



Style 9490

“Genie in a Bottle”

S, M, L, XL

Turquoise genie top has gold foil moon & star print, sequin trim and a chiffon midriff. Genie pants have side slits, gold sequin waist appliqué, gold moon & star print panel, and attached shorts. Includes sequin-trimmed sleeves and a jeweled headpiece with veil. (4 piece set)

This Genie in a bottle wants to make your wishes come true, so close your eyes and watch what she can do!



Come join Alice on a little trip, through the rabbit hole she might just slip.



Style 9476

“Beyond Wonderland”

S, M, L, XL

Blue satin dress with attached apron with large bow in the back, ric rac trim, sequin appliques and jeweled heart buttons. Includes headband with bow and fingerless gloves. (Thigh highs not included) (3 piece set)



Style 7537

"Pretty Pan"

S, M, L, XL

Stretch satin dress with plunging neckline and jagged edge adjustable length drawstring hemline. Includes belt, sword and matching hat. (4 piece set)



She'll fly through the sky just to catch your eye!



She's the beautiful fairy that's just delicious. She goes by the name of Fairy-licious.



Style 9452

"Fairy-licious"

S, M, L, XL

Holographic print stretch knit dress has corset-styled bodice, green rhinestone encrusted neckline appliqué and attached sparkly tutu bottom. Includes wand and fairy wings. (Earrings not included) (3 piece set)

Style 9475

"Queen of Darkness"

S, M, L, XL

Black shiny stretch knit high-low hemline dress with sequin detailing has a dramatic attached jagged collar and removable/adjustable garters. Includes headpiece. (Scepter, fingerless gloves and thigh highs not included) (3 piece Set)

This evil queen gets such delight in being mean night after night.



Hi ho, hi ho, I wish my prince would show!



Style 9478

"Feisty in the Forest"

S, M, L, XL

Fairytale dress with blue sequin bodice and yellow attached satin skirt. Includes sequin trimmed sleeves, adjustable/removable garters and headband with sequin bow. (Thigh highs and stocking clips not included) (4 piece set)

(Shown With)
Style 7031
"Sheer Thigh High"
Black, Red, White
O/S



what a Character

Style 9881, 9882 & 9883



Step right up for what its
worth, to see the greatest
Freak Show here on
Earth!



The sword swallowing
beauty flirts with danger.
Where else can you see an
act that's stranger?

Style 9882

"Freak Show"

M, L, XL, XXL

Red velvet jacket with gold satin lapels, cuffs with black sequin trim, and large "Freak Show" vintage looking screen print on the back of the jacket. Includes striped satin vest with attached dickie with bow tie, and collapsible velvet hat. (Pants, gloves, and cane not included)
(3 Piece Set)

Black velvet corset-styled dress with sequins, fringe and a tutu bottom with attached garters. Includes red metallic fringed shrug with "Champion Sword Swallower" screen print on the back. Includes belt with loop for sword, sword, and vintage-styled turban. (Thigh highs and jewelry not included)
(5 Piece Set)

Style 9883

"Champion Sword Swallower"

S, M, L, XL

Style 9881

“The Snake Chamer”

S, M, L, XL

Seductive metallic red top with gold sequin snakes, fringe and gold coin detailing. Includes side slit velvet skirt with sequin embellished waistband and snake detail and headpiece with coins. (Prop snake and earrings not included) (3 Piece Set)

This Freak Show beauty has a lot at stake; she might get bitten if she doesn’t charm that snake!



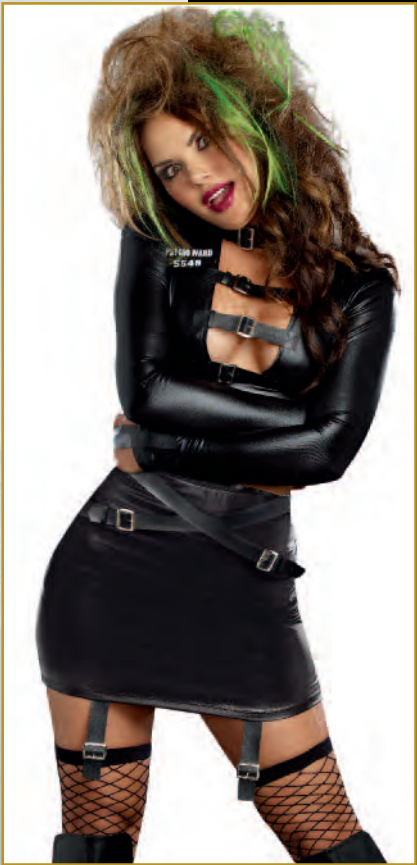
Style 10001

“Psycho Ward”

S, M, L, XL

*Life in the Psycho Ward was never much fun,
when those restraints came loose,
away she would run.*

Shiny black stretchy, sexy top with front buckle closures, “Psycho Ward 5548” screen print and attached restraining straps. High waist skirt with strapping has attached loose hanging garters. (Thigh highs not included) (2 Piece Set)



Style 9884

"Mouse-a-lish"

S, M, L, XL

Black and white polka dot dress with sequin heart pockets and built-in petticoat. Includes sequined mouse ear headband, tail with bow, ruffled gloves, and sequin bow belt. (Thigh highs and jewelry not included) (5 Piece Set)

This adorable mouse is here to please. Don't worry she won't steal your cheese!



Style 9965

"Cat Burglar"

S, M, L, XL

*This kitty is so hot you might not mind
if in the end she robs you blind.*

Shiny stretch dress with
striped, zip-front top and
back cat paw screenprint.
Includes beanie with cat
ears, money bag, belt,
rope, tail and mask.
(Fingerless gloves
not included)
(7 Piece Set)



Style 9870

“Jungle Fever”

S, M, L, XL

Animal print ultra suede romper with overskirt that ties at the shoulder for adjustability. Includes head wrap and matching sleeves. (Spear not included) (3 Piece Set)

*This wild child loves the jungle life.
If only she could get Tarzan to make
her his wife!*



*Yarn balls aren't all this sexy kitty
likes to play with.*

Animal print pink/black
jumpsuit with ruffled
booty detailing and
attached tail. Includes
headpiece and belt.
(3 Piece Set)





This Samurai beauty is elegant it's true, but get her mad and she'll cut you in two!



Fall in love with this Samurai and you will never be bored, just take a look at the size of his sword!

Style 9855
"Mortal Samurai"
S, M, L, XL

Rich purple metallic romper has underwire foam cups, sheer side skirt panels, gold sequin detailing and attached/adjustable garters. Includes sequin-topped sleeves with gold Samurai print, headpiece, choker, and leg garters with attached wraps.
(Sword and hair chopsticks not included)
(5 Piece Set)

Rich purple tunic with gold detailing. Includes headpiece, sash with gold Samurai print, sleeves, and pants with attached gold knee pads.
(Sword not included)
(5 Piece Set)

Style 9856
"Mortal Samurai"
M, L, XL, XXL

As tempting as she might be,
this trained assassin can cut
you in three.



Style 9873
“The Assassins” (Female)
S, M, L, XL

Hooded black leather look dress with attached chiffon cape and embellished neckline piece. Includes fingerless gloves with knives, belt, mask, and battle ax weapon.
(6 piece set)

You might want to call
your love affair
with this assassin
quits, although he
might get mad and cut
you to bits.



Hooded black leather look tunic. Includes belt with loop for weapon, battle ax weapon and wrist gauntlets. (Pants not included)
(4 Piece Set)
(Shown With) Style 6379 “Men’s Basic Pant” Black, White
O/S

Style 9874
“The Assassins” (Male)
M, L, XL, XXL

This dangerous Ninja is sexy it's true, but get too close and he might do naughty things to you.



Style 9977
"Blades of Death"
M, L, XL, XXL
Black knit tunic with dragon screen print and ninja styling. Includes mask, belt, knee pads with ninja screen prints and one leg garter. (Pants, gauntlets, sword, knife, and shoulder holster not included)
(5 Piece Set)
(Shown With) Style 6379 "Men's Basic Pant" Black, White O/S



Convertible

This Ninja beauty is fearless and fast, and as you can see, she's built to last.

Sexy romper has a contrast silver lamé lace-up plunge neckline. Open side skirt has silver lamé trim and novelty sequin waistband with with dragon appliqué. Includes headband and ninja mask. (Sword and fingerless gloves not included)
(4 Piece Set)

Style 9491
"Just Kickin' It"
S, M, L, XL



*You might as well
know from the start,
that this sexy
masked diva will
leave a
mark on your heart.*



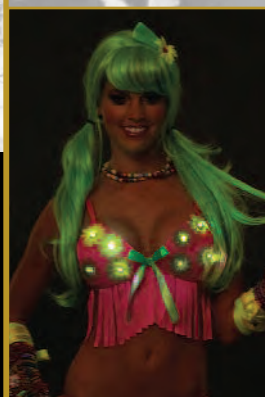
Black stretch knit snap front dress has ruffle detailing and attached cape. Includes hat, mask, and waist corset. (Sword and pantyhose not included)
(4 Piece Set)

Style 9496

"Double-Edged Diva"

S, M, L, XL, 1X/2X, 3X/4X

(Shown With) Style 7034 "Fishnet Pantyhose" Black
O/S



*Life can be ecstasy
in Kandi Land.
Where one never
knows where one
might land.*

*Come with us tonight,
where electric daisies
sparkle bright.*

Style 8877

"Kandi Kid"

S, M, L, XL

Versatile neon rainbow knit striped dress may be folded in half and worn as a bandeau top. Includes matching neon rainbow tutu. (Jewelry, blue wig, neon light-up wig, thigh highs and boot covers not included)
(2 piece set)



(Shown With)
Style 8978
"Neon Fishnet Thigh
Highs"
Neon Pink
O/S

Style 9193
"Boot Covers"
Pink
O/S



Style 8968

"Dazed"

S, M, L, XL

Hot pink light-up multi color daisy top with lightly padded cups and fringe detail. Includes hot pink bikini bottom, neon green tutu with removable/adjustable garters, hair bow barrette, batteries and instructions included. (Wig, jewelry, thigh highs and boot covers not included)
(4 piece set)



(Shown With)
Style 9193
"Boot Covers"
Pink
O/S





foreign Affairs

Style 9962

Style 9962

"Gorgeous Geisha"

S, M, L, XL

*This exotic beauty is quite a treasure;
she loves to bring euphoric pleasure.*

Spectacular red satin
strapless dress with
attached obi, sequin
appliqué and detailing.
Includes matching shrug.
(Fan and hair chopsticks
not included)
(2 Piece Set)



Style 9967

“Flamenco”

S, M, L, XL

Stretch velvet off the shoulder body-skimming gown with flocked polka dot sheer ruffles and open front slit. Includes rose hair accessory, belt and fan. (Gloves and jewelry not included) (4 Piece Set)

(Shown With)
Style 5218
“Luna Glove”
Black, White
O/S



(Shown With)
Style 10003
“Day of the Dead
Headpiece”
O/S

*This Spanish dancer is quite a flirt,
because when she dances she lifts up
her skirt.*



The men in the audience knew they didn't stand a chance, when this French beauty did her dance.



Style 8217

"Can-Can in Paris"

S, M, L, XL, 1X/2X, 3X/4X

Corset style dress with lightly padded underwire cups embellished with sequin and satin trim and attached multi layered ruffle skirt with back bustle.

Includes adjustable/removable garters, mini hat and choker.
(Thigh highs and gloves not included) (4 piece set)

(Shown With) Style 5218 "Luna Glove" Black, White
O/S



This exquisite beauty is such a delight, men are captivated at her sight.



Black dress with red foil dragons and red sequin obi belt with satin ribbon tie. Includes mandarin collar choker, flower barrette and chop sticks for the hair. (Thigh highs not included)
(5 piece set)

Style 8852

"The Geisha with the Dragon Tattoo"

S, M, L, XL

Style 9499
"Scottie Hottie"
S, M, L, XL, 1X/2X, 3X/4X

Charming Scottie dress has velvet vest with hook and eye front detail with attached woven tartan plaid skirt. Includes hat, sleeves, and stocking topper bows. (Thigh highs not included) (4 piece set)



(Shown With)
Style 7031
"Sheer Thigh High"
Black, Red, White
O/S



*This sexy Scottie
wants to tilt your
kilt.*



Style 5084
"Hot Scottie"
M, L, XL, XXL

Plaid pleated kilt with attached sash. Includes matching hat, belt with bag and two sock garters with matching plaid ties. (Socks and shirt not included) (5 piece set)

*Be glad for this hunky
Scottish lad!*



*This Bavarian beauty
has lots of cheer
and an ice-cold beer!*



Style 9492
"Happy New Beer!"
S, M, L, XL, 1X/2X, 3X/4X

Blue satin and velvet dress with authentic Bavarian embroidery design. Includes ruffled apron with bow, and hair bows. (Beer Stein, thigh highs and stocking bows not included) (3 piece Set)

(Shown With) Style 7031 "Sheer Thigh High"
Black, Red, White
O/S



Style 5238
"Mardi Gras Queen"
XS, S, M, L

Underwire bra and matching short with attached back train both with sequin and beaded trims. Includes headpiece, neck collar and arm band. (5 piece set)



This beaded beauty is a treat for all the men on Bourbon Street.



Style 8878
"Mardi Gras Maven"
S, M, L, XL

Green and purple foil print dress with removable/adjustable shoulder straps, multi layered ruffled skirt with gold sequin trim. Includes shrug with sequin trim. (Mask and jewelry not included) (3 piece set)

This Mardi Gras Maven is looking sweet, when she throws her beads on Bourbon Street.



Style 7572
"Ally Kazam"
S, M, L, XL

Chiffon peasant styled top with gold foil paisley print trimmed with gold sequin band. Matching genie pants with gold sequin waistband have attached stretch shorts inside. Includes scarf and head piece. (4 piece set)



This sexy hottie has a harem of men and won't share 'em!



This super sexy Eskimo will melt your popsicle.



Style 4550
"Eskimo Cutie"
XS, S, M, L

Zipper front stretch crushed velvet dress with faux fur trimmed hood with pom pom ties. Includes mittens, faux fur trimmed boot covers and faux chocolate popsicle. (Petticoat not included) (4 piece set)

Activities extra curricular



Styles 9848, 9860 & 9960

OM QUEEN



Style 9848

"Fancy Girl"

S, M, L, XL

Woven plaid jacket with
matching pleated skirt.
(Knee high socks and cell
phone not included)
(2 Piece Set)

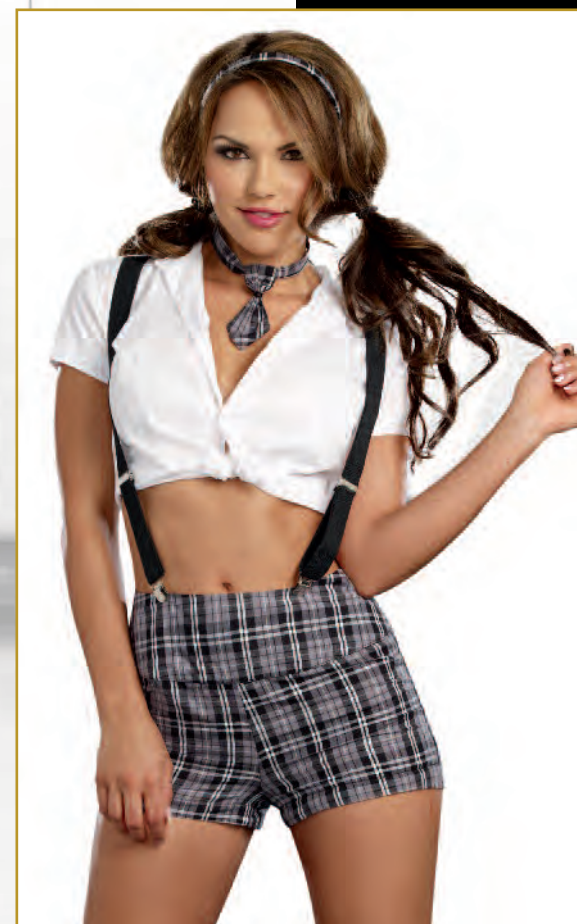
*If only this hot schoolgirl had a clue,
what all the boys at school would love
to do!*



No one could believe this nerdy girl was such a flirt, until she took off her glasses and whipped off her skirt!

2 Costumes in 1!
This costume changes from nerdy to sexy schoolgirl by removing the skirt to reveal the high-waist shorts. Includes button-front shirt, headband, tie, kilt pin, suspenders, eyeglasses and "Nerdyville Band Champion" pin. (Knee high socks not included) (9 Piece Set)

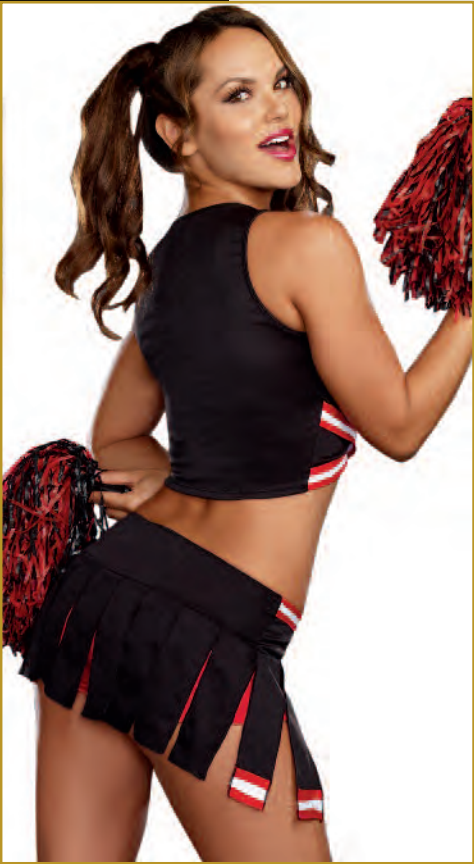
Versatile



Style 9960
“Varsity All Stars Cheerleader”
S, M, L, XL

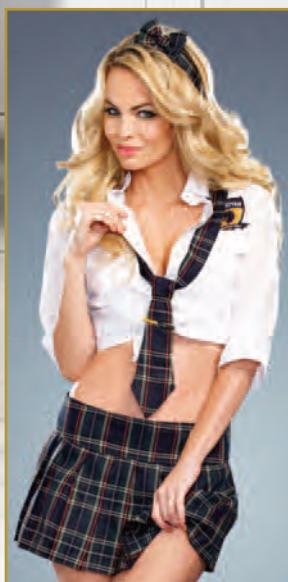
Cheerleader cross-front top with “Score” screen print and striped tape. Includes cheer skirt with attached stretch shorts and cheerleading pom poms. (Socks not included) (3 Piece Set)

One thing is for sure, with this cheerleader you’ve gotta score.



Versatile

This naughty schoolgirl is hot - that's true - but better watch out or she'll gossip about you.



Style 9419

"Prep School"

S, M, L, XL

Button front white collar shirt with a "Manhattan Preparatory School" patch and woven plaid pleated schoolgirl skirt. Includes tie with clip and headband. (Knee high socks not included) (4 piece Set)

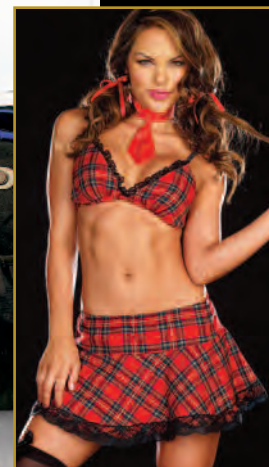


Convertible



All of the boys sure did drool, when this smokin' hot schoolgirl came to school.

Convertible school girl has button down preppy top with chenille varsity letter detail and flirty pleated skirt. Coordinating lace trimmed bra top and necktie included. (Thigh highs and hair bows not included) (4 piece set)



Style 8201

"After School Special"

XS, S, M, L

Convertible



Better get ready and know what to do, when this athletic beauty tackles you.

Sporty stretch knit romper has large holographic numbers and gold sequin trim. Includes skirt with athletic detailing and athletic thigh high socks. (Football not included) (3 piece set)

Style 9500

"Player's Club"

S, M, L, XL



Style 9494
"My Game, My Rules"
S, M, L, XL

This versatile button down dress can also be worn tied around the waist as a top. Includes shorts, thigh high socks, whistle and hat. (5 piece set)



This insatiable referee loves when players play rough, once she blows her whistle, their growing yardage is never enough.



Convertible



This Grand Slam player always brings 'em home!



Convertible



Style 6469
"Grand Slam"

S, M, L, XL, 1X/2X, 3X/4X

Stretch knit snap front dress with sequin embroidered "Grand Slam" appliqué and heat transfer number "10" detail on back. Includes stretch knit short with elastic waist, baseball cap and athletic knee high socks. (Baseball mitt and baseball not included) (4 piece set)



Style 9501
"Knockout"
S, M, L, XL

Versatile top can be worn as a sequin sports bra when midriff is zipped off. Includes hooded robe and satin shorts with sequin star appliqué. (Boxing gloves not included) (3 piece set)



This world-class knockout loves being on top!



Convertible



C'mon and take a ride on the wild side.



Convertible



Style 6477
"Ride It"
XS, S, M, L

Gloss checker print microfiber zip front romper with side stripes and race car patches. Includes matching microfiber checker print skirt, belt with "Racing" heat transfer and flag. (Sunglasses and fence net pantyhose not included) (4 piece set)



seasonal Sweeties



*Come celebrate with this
all American beauty,
she's so patriotic, and
what a cutie!*

Style 8892

"American Booty"

S, M, L, XL

Red, white & blue
stars and stripes print
dress with adjustable
length sides. Includes
patriotic top hat.
(2 piece set)



Style 8878
"Mardi Gras Maven"
S, M, L, XL

Green and purple foil print dress with removable/adjustable shoulder straps, multi layered ruffled skirt with gold sequin trim. Includes shrug with sequin trim. (Mask and jewelry not included)
(3 piece set)

This Mardi Gras Maven is looking sweet, when she throws her beads on Bourbon Street.



Give me your tired, your poor and your hot guys for sure!



Style 5238
"Mardi Gras Queen"
XS, S, M, L

Underwire bra and matching short with attached back train both with sequin and beaded trims. Includes headpiece, neck collar and arm band.
(5 piece set)

This beaded beauty is a treat for all the men on Bourbon Street.



Style 6540
"Miss Liberty"
S, M, L, XL

Stretch knit faux wrap dress with side shirring detail. Includes headpiece and light-up torch with battery.
(3 piece set)





*They are always
after her for her
lucky charms!*

Stretch knit corset style brocade bodice dress with adjustable front lace-up panel, satin skirt and attached apron with shamrock details. Includes matching mini top hat on headband, hair ribbons and leg garter. (Beer mug, thigh highs and petticoat not included) (4 piece set)

(Shown With) Style 7031 "Sheer Thigh High" Black, Red, White O/S
(Suggested Accessory) Style 4582 "Ursula Petticoat" Black, White O/S

Style 8888

"Lady Luck"

S, M, L, XL



*Ol' Saint Patrick you'll be
thanking, when you give
this naughty
leprechaun a spanking.*

Style 5199
"Spank Me I'm Irish"
S, M, L
Stretch knit strapless
dress with attached
belt, felt clover
detail skirt and puff
arm sleeves. Includes
hat, pot of gold
bag and riding crop.
(Thigh highs
not included)
(6 piece set)

(Shown With)
Style 7031
"Sheer Thigh High"
Black, Red, White
O/S



*With his pot of
gold, getting
lucky is easy!*

Style 4481
"Get Lucky Leprechaun"
M, L, XL, XXL

Button front vest and
matching suspenders.
Includes hat, large bow
tie and arm band with
"Kiss Me" clover.
(Pants not included)
(5 piece set)



Style 8870

“Santa Baby”

S, M, L, XL

Red stretch crush velvet dress with faux fur trim at neckline and hem. Includes matching long sleeve shrug, belt, jingle bell stocking toppers and Santa's hat. (Thigh highs and gloves not included) (5 piece set)

(Shown With)
Style 7031
“Sheer Thigh High”
Black, Red, White
O/S



Sexy Santa is here for you. She wants to make all your wishes come true!



She's always naughty on hot holiday nights!



Style 4017

“Santa's Sweetie”

S, M, L

Stretch velvet dress with faux fur trim. Includes hat, necklace, belt and gauntlets. (6 piece set)

Style 8972

“Under The Mistletoe”

S, M, L, XL

Red satin dress with faux fur trim, adjustable shoulder straps and bow details. Includes Santa hat and faux fur boot toppers. (3 piece set)

This sexy Santa loves when you are naughty!



This sexy belle wants to take you on a snow-melting sleigh ride.



Style 4552

“Sleigh Belle”

XS, S, M, L

Zipper front crushed stretch velvet dress with faux fur trim hood with pom pom ties and attached tulle petticoat. (Additional petticoat not included) (1 piece set)

plus Costumes

Style 9837X

"Sophisticated Lady"

S, M, L, XL, 1X/2X, 3X/4X

Burgundy velvet dress with sequin scroll design has an intricately embroidered gold neckline and hemline trim with sequin fringe. Includes gold sequin headpiece with ostrich feather. (Gloves, boa, jewelry, and cigarette holder not included)
(2 Piece Set)



Style 8812X
"Dames Like Us"
S, M, L, XL, 1X/2X, 3X/4X

20's style dress with reversible black/red dangling paillettes and black beaded neckline. Stretch sequin headpiece with ostrich feather included. (Jewelry, boa, cigarette holder, gloves and pantyhose not included) (2 piece set)



Style 8217X
"Can-Can in Paris"
S, M, L, XL, 1X/2X, 3X/4X

Corset style dress with lightly padded underwire cups embellished with sequin and satin trim and attached multi layered ruffle skirt with back bustle. Includes adjustable/removable garters, mini hat and choker. (Thigh highs and gloves not included) (4 piece set)



Style 9458X
"Life's a Party"
S, M, L, XL, 1X/2X, 3X/4X

Silver novelty sequin dress with exquisite 1920's look neckline piece and sequin fringe bottom. Includes stretch silver sequin headpiece with white ostrich feather. (Jewelry, boa, satin gloves and cigarette holder not included) (2 piece set)



Black and white pinstripe knee-length knit dress with attached carnation and tie with dollar sign. Includes gangster hat and arm garter. (Cigar and money not included)
(3 Piece Set)

Style 9839X
"Deadly Dames"
S, M, L, XL, 1X/2X, 3X/4X



Style 9417X
"Keep It Clean"
S, M, L, XL, 1X/2X, 3X/4X
Black stretch velvet vintage styled dress with ivory and gold embroidered detailing. Includes embroidered apron, headpiece and choker. (Feather duster not included)
(4 piece set)



Style 8211X
"Maid To Order"
S, M, L, XL, 1X/2X, 3X/4X
Ruffled pinafore apron with vintage Parisian print of polka dots and attached to black knit dress with sheer sleeves and large back bow. Includes removable/adjustable garters with bows, headpiece and feather duster. (Thigh highs not included)
(4 piece set)

Style 9964X

“Night Nurse”

S, M, L, XL, 1X/2X, 3X/4X

Retro-styled white knit over-the-knee length nurse dress with red button front. Includes nurse hat, belt, capelet, and “Nurse Marian A. Docta” nameplate. (Earrings not included) (5 Piece Set)



Style 9504X

“Hospital Hottie”

S, M, L, XL, 1X/2X, 3X/4X

Nurse uniform has red ruffle detail and medical cross screen prints. Includes nurse hat, belt, and stocking topper bow pins. (Thigh highs not included) (4 piece set)

Style 9869X

“Army Brat”

S, M, L, XL, 1X/2X, 3X/4X

Halter dress with army patches, military buttons and gold trim detailing. Includes shrug with Army screen print, bullet belt and hat. (Jewelry not included) (4 Piece Set)



Style 9918X

“Service with a Smile”

S, M, L, XL, 1X/2X, 3X/4X

Black stretch knit dress with lace-up neckline, gold trim and detailing. Includes “Mile High Captain” pin, and pilot’s hat. (Earrings not included) (3 Piece Set)

Style 9505X

"Locked Up!"

S, M, L, XL, 1X/2X, 3X/4X

Sexy stretch knit, zip front romper has "Department of Corrections" screen print. Includes belt with removable handcuffs, prison ID pin, booking card, and two-way zip skirt with "Guilty" screen print on the back. (Fingerless gloves not included) (5 piece set)



Style 9439X

"Shore Thing"

S, M, L, XL, 1X/2X, 3X/4X

Navy satin dress with waist sash belt, sequin appliques along the hemline and an attached red petticoat. Includes sailor hat and cuffs. (Earrings not included) (4 piece Set)



Style 8816X

"Dirty Cop Officer Anita Bribe"

S, M, L, XL, 1X/2X, 3X/4X

Black bengaline stretch knit dress with belt and police patches on shoulders. Costume includes police hat with badge pin, "Officer Anita Bribe" name plate and removable police badge. (Sunglasses, handcuffs, fingerless gloves, pantyhose and baton not included) (5 piece set)



Style 5985X

"Makin' Waves"

S, M, L, XL, 1X/2X, 3X/4X

Stretch knit dress with lightly padded underwire cups, contrast navy piping and gold foil bows on neckline and gold foil bow hem trim with printed anchor accents. Includes matching long sleeved shrug with foil star detail and sailor hat with anchor and gold foil bow. (3 piece set)





Style 9975X
 "Diner Doll"
 S, M, L, XL, 1X/2X, 3X/4X

50's styled red and white striped dress with heart buttons and screen printed "Betty" nameplate. Includes hat with heart button, lace edged apron, scarf and "Hot Buns" pin. (Petticoat, earrings, tray, food, and socks not included)
 (5 Piece Set)



Black and white mod dress with daisy trim straps. Includes headband and boot covers.
 (Jewelry not included)
 (3 Piece Set)

Style 9859X
 "Yeah Baby!"
 S, M, L, XL, 1X/2X, 3X/4X

Style 8158X

“Go Go Gorgeous”

S, M, L, XL, 1X/2X, 3X/4X

Stretch knit retro pattern A-line Go Go dancer dress has bell shaped long sleeves and unique shaped neckline. Includes matching retro glasses, earrings, headband and faux vinyl daisy belt. (5 piece set)



Style 8760X

“Cheetah-luscious”

S, M, L, XL, 1X/2X, 3X/4X

Leopard print stretch crush velvet hooded dress with fur trim and removable tail. Includes boot covers. (3 piece set)



Style 8793X

“Panda Bear Baby”

S, M, L, XL, 1X/2X, 3X/4X

Zipper front stretch velvet dress with faux fur trimmed hood, panda bear face and pom pom ties. Includes matching paw print mittens, faux fur trimmed boot covers and attached tail. (3 piece set)



Style 7497X

“Big Bad Sexy Wolf”

S, M, L, XL, 1X/2X, 3X/4X

Zipper front stretch crushed velvet dress with faux fur trimmed hood with pom pom ties, attached ears and tail. Includes faux fur trimmed boot covers. (2 piece set)



Style 9477X
"Little Red"
S, M, L, XL, 1X/2X, 3X/ 4X

Beautifully detailed fairytale dress includes underwire foam cups with pleated ruffles, embroidered heart trim, and lace-trimmed apron. Includes full length hooded satin cape. (Basket, thigh highs and satin gloves not included)
(2 piece Set)



Style 9473X
"Having a Ball"
S, M, L, XL, 1X/2X, 3X/4X

Blue satin dress with jeweled neckline trim, high-low hemline, sheer puff sleeves and sparkly print skirt. Includes crown. (Jewelry, satin gloves, petticoat, and thigh highs not included)
(2 piece set)



Style 9895X
"Goldilocks"
S, M, L, XL, 1X/2X, 3X/4X

Adorable fairytale dress in black velvet with gold satin ruffles has unique sequined daisy trim along its lace-up bodice and a built-in petticoat. Attached apron has three sequined bear appliques and is framed with black ric rac. Includes full-length hooded gold satin cape. (Hair ribbons and thigh highs not included)
(2 Piece Set)

Style 9442X

“Medusa”

S, M, L, XL, 1X/2X, 3X/4X

Sexy green metallic knit gown has a unique high-low hemline, gold sequin snake appliques crossing the plunging neckline meeting at the open center, and attached gold mesh sashes with gold sequin snake appliques. Waistband is pleated with sequin detailing. Includes moldable snake headpiece and gold lamé armbands. (Earrings not included)
(3 piece set)



Style 9422X

“Killing Me Softly”

S, M, L, XL, 1X/2X, 3X/4X

Black and red velvet Victorian styled dress with high-low hemline has an exquisite sequined, embroidered neckline piece, vampire collar and sheer black chiffon sleeves. (Jewelry and pantyhose not included)
(1 piece set)

Style 9461X

“Sorcery & Seduction”

S, M, L, XL, 1X/2X, 3X/4X

Purple velvet dress with silver star and moon print, silver sequin trim detailing, silver lamé lined hood, and a high-low hemline. Includes waist sash with tassels. (Magic wand not included)
(2 piece Set)



Style 8867X

“Treasure Pleasure”

S, M, L, XL, 1X/2X, 3X/4X

Pirate dress with attached black velvet scroll printed vest, red lace peasant style top with layered bell sleeves and attached high-low hemline petticoat. Pirate hat included. (Jewelry, sword, and pantyhose not included)
(2 piece set)



Style 9824X
“King Slayer”
S, M, L, XL, 1X/2X, 3X/4X

Shimmering blue and black velvet dress with silver sequin detailing and embroidered crest has attached velvet cape. Includes wrist gauntlets and rhinestone headpiece. (Sword not included)
(3 Piece Set)



Style 9407X
“Scandalous Sword Warrior”
S, M, L, XL, 1X/2X, 3X/4X

Black velvet dress with high-low hemline, silver sequin waistline and hem trim, embellished and embroidered Royal Lion silver crest and attached long red chiffon sash. Includes rhinestone headpiece and silver lamé armbands. (Sword not included)
(3 piece set)



Style 9842X
“Medieval Enchantress”
S, M, L, XL, 1X/2X, 3X/4X

Exquisite embossed burgundy velvet gown with gold sequin neckline piece and sheer sleeves. Includes gold sequin medieval belt and headpiece. (Jewelry not included)
(3 Piece Set)



Native American inspired ultra suede fringed dress with beaded neckline detail. Includes colorfully beaded belt and headpiece. (3 piece set)

Style 8198X
 "Hot On The Trail"
 S, M, L, XL, 1X/2X, 3X/4X



Style 8216X
 "Giddy Up!"
 S, M, L, XL, 1X/2X, 3X/4X
 Western style ultra suede cowgirl dress with hook & eye front closure, star grommets, fringe and lace-up detailing. Includes cowboy hat, neck scarf and pin. (4 piece set)



Style 5877X
 "Pocahottie"
 S, M, L, XL, 1X/2X, 3X/4X
 Faux suede dress with intricate beaded neckline and layered fringe hem. Includes matching beaded headpiece with feathers. (2 piece set)

Style 6469X
“Grand Slam”
S, M, L, XL, 1X/2X, 3X/4X

Stretch knit snap front dress with sequin embroidered “Grand Slam” appliqué and heat transfer number “10” detail on back. Includes stretch knit short with elastic waist, baseball cap and athletic knee high socks. (Earrings not included)
(4 piece set)



Convertible



Style 9492X
“Happy New Beer!”
S, M, L, XL, 1X/2X, 3X/4X

Blue satin and velvet dress with authentic Bavarian embroidery design. Includes ruffled apron with bow, and hair bows. (Beer mug, thigh highs and stocking bows not included)
(3 piece Set)



Style 9499X
“Scottie Hottie”
S, M, L, XL, 1X/2X, 3X/4X

Charming Scottie dress has velvet vest with hook and eye front detail with attached woven tartan plaid skirt. Includes hat, sleeves, and stocking topper bows. (Thigh highs and earrings not included)
(4 piece set)



Style 9496X
“Double-Edged Diva”
S, M, L, XL, 1X/2X, 3X/4X

Black stretch knit snap front dress has ruffle detailing and attached cape. Includes hat, mask, and waist corset. (Sword and pantyhose not included)
(4 Piece Set)





accessories

Styles 9986, 9990 & 9998



Style 9990
 “Rock Star Dress”
 S, M, L, XL
 Neon pink and green dress with zebra print and jagged edged detailing. (Jewelry, microphone, wig, fishnet tights, and fishnet glove not included)
 (1 Piece Set)



Gray “Department of Corrections” screen print zip-front dress with attached belt.
 (Baton, sunglasses, and handcuffs not included)
 (1 Piece Set)

Style 9993
 “Department of Corrections Starter Dress”
 S, M, L, XL



Style 9526

"Liquid Dress"

S, M, L, XL

Shiny stretch dress with internal shelf bra and adjustable shoulder straps. Just add accessories to this dress to create many different costumes.

Style 5832

"Basic Dress"

Black, Red

S, M, L, XL

Stretch microfiber dress with internal stretch bra. Add costume accessories to this dress to create many different costume options.

(Suggested Accessory)

Style 8346

"She's My Hero"

Costume Mini Kit

O/S

Black knit skeleton print dress. (Gloves and headpiece not included) (1 Piece Set)

Style 9991

"Skeleton Starter Dress"

S, M, L, XL

(Shown With) Style 5218 "Luna Glove" Black, White O/S
(Shown With) Style 10003 "Day of the Dead Headpiece" O/S

Style 8912

“Flapper”

Black, Red

S, M, L, XL, 1X/2X, 3X/4X

Full fringe dress with adjustable shoulder straps. (Jewelry and fishnet pantyhose not included) (1 Piece Set)



(Shown With)
Style 7034
“Fishnet Pantyhose”
O/S



Style 8912X

“Flapper”

Black, Red

S, M, L, XL, 1X/2X, 3X/4X

Full fringe dress with adjustable shoulder straps. (Jewelry, boa, headpiece, and fishnet pantyhose not included) (1 Piece Set)

(Shown With)
Style 9514
“Flapper Headpiece”
O/S



Style 9992

“Flapper Costume Starter Dress”

Gold metallic lamé and fringe one shoulder dress with bow. (Gloves, feather headpiece, wig, jewelry, and cigarette holder not included) (1 Piece Set)

S, M, L, XL

(Shown With) Style 5218 “Luna Glove” Black, White
O/S



One shoulder animal print brushed knit dress.
(Bone barrette not included)
(1 piece set)

Style 8910
"Cave Girl"
S, M, L, XL



Style 9527
"Camo Dress"
S, M, L, XL
Camouflage print stretch knit dress with adjustable shoulder straps.
(Hat and earrings not included)

(Suggested Accessory)
Style 8352
"Battalion Babe"
Costume Mini Kit
S/M, M/L



Style 8909
"Blue Gingham Dress"
S, M, L, XL
Blue and white check dress with white chiffon sleeves.
(Thigh highs, hair bows, petticoat, dog and basket not included)
(1 piece set)

(Shown With)
Style 4582
"Ursula Petticoat"
Black, White
O/S

Style 9985

“Prison Break Top”

S/M, M/L

Orange knit v-neck prison top with “Department of Corrections” screen print. Includes prison ID card. (Handcuffs and shorts not included) (2 Piece Set)

(Shown With)
Style 9994
“Liquid Roxy Short”
S/M, M/L



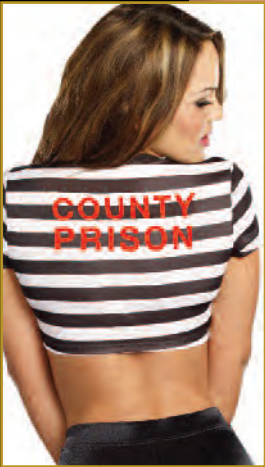
Style 9988

“Jailbird Top”

S/M, M/L

Black and white tie front knit top with “County Prison” screen print on the back. (Shorts not included) (1 Piece Set)

(Shown With)
Style 9974
“Hi-Waisted Short”
S/M, M/L



Style 9987

“Knight Time Top”

S/M, M/L

Silver/black chainmail look, sheer front hooded top with crest. (Pants not included) (1 Piece Set)

Style 6045 “Liquid Legging” Black
S/M, M/L



Neon pink large hole fishnet top with neon green tube top set. (Jewelry, skirt, and gloves not included)
(2 Piece Set)

(Shown With) Style 9998 "80's Skirt" Hot Pink
S, M, L, XL

Style 9986

"Rock On! Top"
S/M, M/L



This fully fringed top can be used to create many different looks and also makes a great addition to any wardrobe.

(Suggested Accessory)
Style 9514
"Flapper Headpiece"
Black
O/S



Style 8358
"Pretty N' Peasant"
Black, Red, White
S/M, M/L

Sexy
off-the-shoulder
knit top with elastic
ruffled detail and bow
accent. Great starter
top for many costume
ideas.
(1 piece set)

(Shown With)
Style 9544
"Ruffled Skirt"
S, M, L, XL
Black



(Shown With)
Style 4573
"Rizzo Legging"
S/M, M/L
Black



(Shown With)
Style 9544
"Ruffled Skirt"
S, M, L, XL
Black



Style 9519
"Striped Peasant Top"
Black/Red
S/M, M/L

Red and black striped
satin peasant top with
sheer sleeves is perfect
for creating your own
pirate costumes.
(1 piece set)

(Shown With)
Style 9544
"Ruffled Skirt"
S, M, L, XL
Black



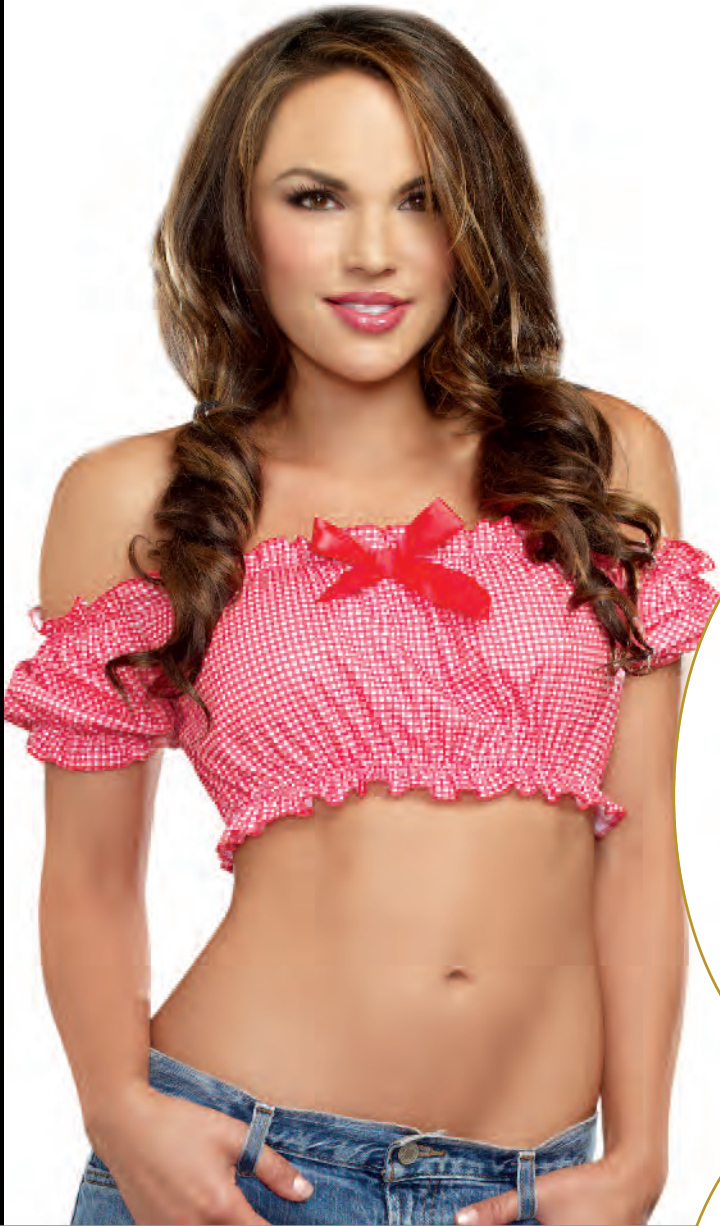
Style 8902
"Peasant Top
Black"
S/M, M/L

Black glossy stretch
knit peasant top with
sheer sleeves that may
be worn on or off the
shoulder.
(Sword, hat and skirt
not included)
(1 piece set)

(Suggested
Accessory)
Style 9546
"Pirate Mini Kit"
Waist wrap, Head scarf
S/M, M/L

Style 9532
"Country Girl Top"
Red/White Gingham
S/M, M/L

Off-the-shoulder stretch knit gingham top with blousy shirring all around and satin bow detail on neckline. (Shorts not included) (1 piece set)



Style 9530
"Schoolgirl Top"
Red Plaid
S/M, M/L

Plaid stretch knit plunging neckline shirt with cap sleeves. Great starter shirt for many costume ideas. (1 piece set)

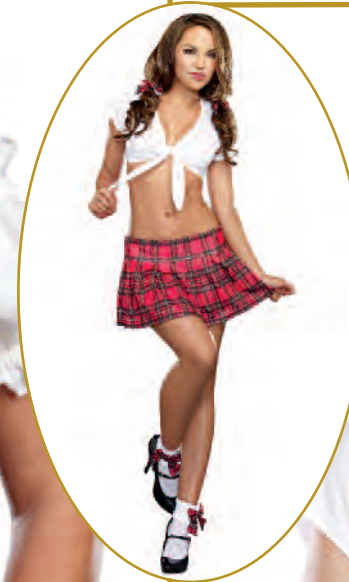
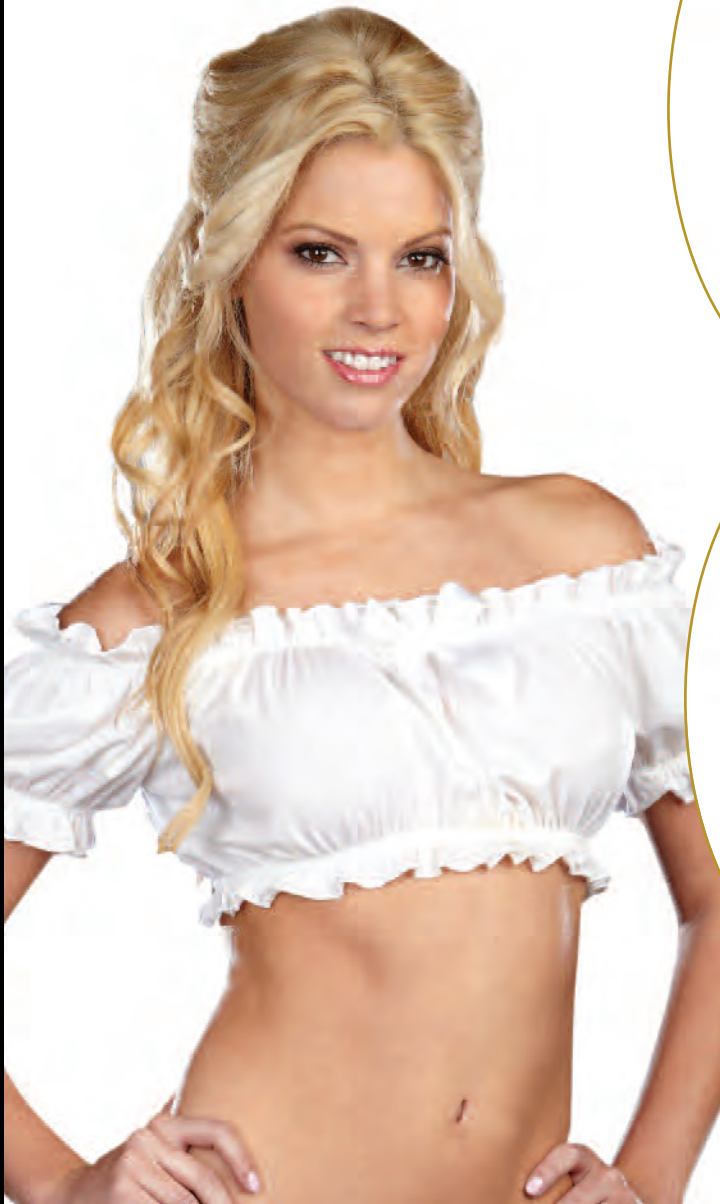


Style 8355
"All Tied Up"
Black, White
S/M, M/L

Stretch knit plunging neckline shirt with cap sleeve. Great starter shirt for many costume ideas. (1 piece set)

Style 8947
"Ho Garden Top"
White
S/M, M/L

Off-the-shoulder stretch knit top with blousy shirring all around and satin bow detail on neckline. (1 piece set)



Style 9995
“60’s Wet Look Skirt”
S, M, L, XL

Shiny white “Wet
Look” 60’s skirt.
(1 Piece Set)



Style 8907
“Sequin Starter Skirt”
Black
S, M, L, XL

A-line skirt with zipper
closure and sequins on
the front and back.
(1 piece set)



Style 9998
“80’s Skirt”
S, M, L, XL

Neon pink
asymmetrical skirt.
(1 Piece Set)



(Suggested Accessory)
Style 9986
“Rock On! Top”
Neon Pink
S/M, M/L

Style 7791
“Glam Short”
Black
S/M, M/L

Knit boy shorts with
front and back sequins.



Style 9194

"Burlesque Skirt"

Black

S, M, L, XL

Black high-low hemline satin with organza skirt features multi layered ruffle back detail. (Corset and pantyhose not included) (1 piece set)

(Shown With)
Style 7034
"Fishnet Pantyhose"
O/S



Style 9544

"Ruffled Skirt"

S, M, L, XL

Black satin multi layered ruffled skirt with side zipper can be used to create many different costumes. (1 piece set)

(Shown With)
Style 9519
"Striped Peasant Top"
Black/Red
S/M, M/L



Style 8926

"Victorian Vamp Bustier"

32, 34, 36, 38

Fully boned brocade taffeta bustier with velvet flock pattern, rhinestone ruffled neckline and front zipper closure. Includes removable/adjustable shoulder straps. (Petticoat not included) (1 piece set)

(Shown With)
Style 8964
"Fairytale Petticoat"
Black, White
O/S



oldnavy Reversible



Style 6586

"Schoolgirl/Gangster Skirt"

S, M, L, XL

Pleated reversible plaid Schoolgirl/Gangster pinstripe skirt. (Top not included) (1 piece set)



Style 6045
“Liquid Legging”
Black
S/M, M/L

Glossy stretch knit
legging.

(Suggested Accessory)
Style 8902
“Peasant Top”
Black
S/M, M/L

Style 9546
“Pirate Mini Kit”
Waist wrap, Head scarf
S/M, M/L



Style 0072
“Basic Unitard”
S/M, M/L, 1X/2X, 3X/4X

Cotton/Spandex
adjustable strap
unitard.



Style 9974
“Hi-Waisted Short”
S/M, M/L

High waist stretch
knit short.
(1 Piece Set)

(Suggested Accessory)
Style 9988
“Jailbird Top”
S/M, M/L

Style 9997
“SWAT Mini Kit”
Crop top, Hat
S/M, M/L



Style 0072X
“Basic Unitard”
S/M, M/L, 1X/2X, 3X/4X

Cotton/Spandex
adjustable strap
unitard.

Style 9994

“Liquid Roxie”

S/M, M/L

Glossy stretch knit hot short with elastic waist.



Style 4575

“Roxie Hot Short”

Black, Hot Pink, Red, White

S/M, M/L, 1X/2X, 3X/4X

Basic stretch knit hot short with elastic waist.
(Hot Pink not available in Plus)
(1 piece set)



Style 8906

“Camo Roxie”

Green

S/M, M/L

Stretch knit hot short with elastic waist.
(1 piece set)



Style 9558
“Liquid Unitard”
Black
S/M, M/L

Glossy stretch knit unitard can be used to create many different costumes.



Style 4573
Black
S/M, M/L

Basic stretch knit crop legging.

Style 9605
“Men’s Disco Pant”
M, L, XL, XXL

Men’s polyester flare legged disco pants with shiny foil dot at hem. Elastic back waist allows for adjustability.

(Suggested Costume)
Style 9468
“Disco Dude”
M, L, XL, XXL



Style 6379
“Men’s Basic Pant”
Black
M, L, XL, XXL

Men’s basic pant with elastic waistband and pockets.

Style 4582
"Ursula Petticoat"
Black, White
O/S

Multi layer
tulle
petticoat with
three
lace ruffles.



Style 8964
"Fairytale Petticoat"
Black, White
O/S

Multi layered
sheer mesh
petticoat with
high-low
hemline,
satin ribbon
detail edging and
back bow.
(1 piece set)



Style 7846

“Light-Up Tutu”

Black, White

O/S

Light-up tutu interlaced with fiber optic lights with hidden pocket for on/off switch. Batteries and instructions included.



Style 7007

“Tutu Petticoat”

Black, White

O/S

Multi layered tulle tutu petticoat with elastic band.



Style 8346

"She's My Hero"

O/S

Superhero star studded cape with tie front closure. Includes gold lamé headband and wristband with star screenprint detail. (Dress not included) (3 piece set)

(Shown With)
Style 5832
"Basic Dress"
Black, Red
S, M, L, XL



Style 9996

"60's Mini Kit"

S/M, M/L

Shiny 60's styled color block tank top with matching hat. (Jewelry not included) (2 Piece Set)

(Shown With)
Style 9995
"60's Wet Look Skirt"
S, M, L, XL

Style 8352

"Battalion Babe"

S/M, M/L

Cropped stretch knit vest with zip front closure and wide attached belt detail. Includes matching military hat. (Shorts not included) (2 piece set)

(Suggested Accessory)
Style 8906
"Camo Roxie"
S/M, M/L



Style 9997

"SWAT Mini Kit"

S/M, M/L

Cropped stretch knit top with zip front closure and wide attached belt detail. Includes SWAT hat. (2 Piece Set)

(Shown With)
Style 9974
"Hi-Waisted Short"
S/M, M/L

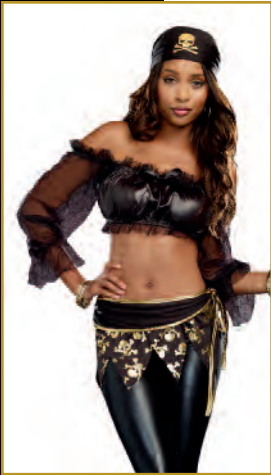
Style 9546

“Pirate Mini Kit”

S/M, M/L

Pirate mini kit includes gold foil skull printed waist wrap and matching head scarf. (Leggings and jewelry not included) (2 piece set)

(Shown With)
Style 6045
“Liquid Legging”
Black
S/M, M/L



Style 8935

“Leopard Kitty Mini Costume Kit”

S/M, M/L

Kit includes capelet with leopard faux fur trimmed hood with pom pom ties, tail and matching boot covers (Dress not included) (3 piece set)



Style 8904

“Gangster Kit”

Black

S/M, M/L

Black and white pinstriped halter top with attached carnation, center front buttons and red necktie. (Jewelry not included) (2 piece set)

(Suggested Accessory)
Style 8907
“Sequin Starter Skirt”
Black
S, M, L, XL



Style 9514

“Flapper Headpiece”

O/S

Black stretch sequin headpiece with 1920's appliqué and beading.



Style 10003
"Day of the Dead Headpiece"
O/S

Headband with roses
and black lace veil.
(Jewelry not included)
(1 Piece Set)

(Shown With)
Style 9903
"Ms. Bones"
Women's Costume
S, M, L, XL



Style 10005
"Ms. Bones Hat"
O/S

Black top hat with
skeletons and attached
long tulle veil.
(Jewelry not included)
(1 Piece Set)

(Shown With)
Style 9903
"Ms. Bones"
Women's Costume
S, M, L, XL



Style 9518
"Snake Crown"
O/S

Beautiful Cleopatra
headpiece with snake
and golden beads has
an adjustable back.



Style 9972
"Dazzling Ruby Headpiece"
O/S

Gold metal headpiece
with dazzling rubies.
(1 Piece Set)



Style 9516

"Dripping Rubies
Headpiece"

O/S

Magnificent gold
headpiece
dripping in
rubies and gold
coins.



Style 9515

"Shimmer Rhinestone
Headpiece"

O/S

Golden headpiece
with cascading
rhinestones and
adjustable back.



Style 9520

"Glittering Rhinestone
Headpiece"

O/S

Exquisite
rhinestone
headpiece has clips
on either side for
attaching to hair.



Style 9523

"Shimmering Gold
Coin Crown"

O/S

Gold metal crown
with coins.



Style 9542

"Elf Princess Kit"

O/S

Elf Princess kit includes latex elf ears and golden adjustable headpiece. (2 piece set)



Style 9898

"Warrior Queen Wig"

Blonde

O/S

Beautiful long blonde synthetic wig styled with braids and curls.



Style 9999

"Native American Headdress"

O/S

Native American full headdress with turquoise black and white feathers. (1 Piece Set)



Style 8314

"Light-Up Afro Wig"

Brown

O/S

Light-up afro wig interlaced with innovative fiber optic lights and hidden pocket with on/off switch. Batteries and instructions included. (1 piece set)



Style 9970
“Galaxy Glasses”
O/S

Silver plastic co-ed sunglasses.
(1 Piece Set)



Style 9969
“Medieval - Galaxy Gloves”
O/S

Silver fingerless gloves.
(1 Piece set)



Style 9971
“Galaxy Gun”
O/S

Silver galaxy gun with lights and sound.
Requires AA batteries.
(Batteries not included)



Light up wig



Style 8349
“Light-Up Blue Wig”
O/S

Light-up blue wig interlaced with innovative fiber optic lights and hidden pocket with on/off switch. Batteries and instructions included.
(Glasses not included)
(1 piece set)

(Shown With)
Style 9970
“Galaxy Glasses”
O/S

Style 9529
“Special Ops Helmet”
O/S

Men’s adjustable tactical helmet
(Face mask and sunglasses not included)
(1 piece set)



Style 7034

“Fishnet Pantyhose”

Black

O/S

Fishnet pantyhose with back seam.

100% Nylon



Style 7030

“Sheer Thigh High”

Black, White

O/S, O/S Queen

Sheer thigh high with stay up silicone lace top.

85% Nylon
15% Spandex



Style 7031

“Sheer Thigh High”

Black, Red, White

O/S

Sheer thigh high with back seam.

100% Nylon



Style 5218

“Luna Glove”

Black, White

O/S

Stretch satin opera length gloves.



Style 7819

“Dominique Glove”

Black

O/S

Shiny stretch knit opera length glove.



Style 9193

“Boot Covers”

Pink

O/S

Furry boot covers.



Style 8978

“Neon Fishnet Thigh Highs”

Neon Pink

O/S

Stretch knit large hole fishnet thigh highs with closed toe and wide back seam detail.



The logo for Alleva is rendered in a gold, cursive script font. It is set against a dark blue background with a radial sunburst pattern of light rays emanating from behind the text. A registered trademark symbol (®) is located at the end of the word.

Alleva®

The Leading Name in Costume Design

2015/2016



Style A9989

"Army Doll"

S, M, L, XL

Camouflage knit dress with zipper front closure and two military patches. Includes hat.
(Earrings not included) (2 Piece Set)



Navy and white satin polka dot romper with red sequin detailing and anchor appliqué. Includes sailor hat.
(Earrings not included) (2 Piece Set)

Style A9984

"Just Cruisin'"

S, M, L, XL



Style A9983
 "Hitting the Bars"
 S, M, L, XL

Black and white striped knit dress with inmate number. Includes hat and "County Prison" belt. (Earrings not included)
 (3 Piece Set)



Black knit dress with front zipper and "S.W.A.T" screen print. Includes hat and police badge. (Baton and glasses not included)
 (3 Piece Set)

Style A9981
 "S.W.A.T Police"
 S, M, L, XL, 1X/2X, 3X/4X



Black knit stretch knit romper with dragon screen print, attached waist sash and leg wraps. Includes face mask. (Sword not included)
(2 Piece Set)

Style A9982

"Kickin' Arse"

S, M, L, XL



Black and silver warrior dress with sequin and lace-up front details and headpiece. (Sword not included)
(2 Piece Set)

Style A9506

"Battle Beauty"

S, M, L, XL



Gold lamé trim geisha dress with obi corset detailing and gold bow. (Chopsticks not included)
(1 piece set)

Style A8920

"Geisha"

S, M, L, XL, 1X/2X, 3X/4X



Style A8925

“Worship Me”

S, M, L, XL

Gold lamé trimmed goddess dress with matching arm bands. (Headpiece not included) (2 Piece Set)



Style A8924

“Walk Like an Egyptian”

S, M, L, XL, 1X/2X, 3X/4X

Egyptian styled dress with gold lamé trim and matching armbands. (Wig not included) (2 Piece Set)



Style A8917

“Look At My Booty”

S, M, L, XL

Off-the-shoulder pirate dress with sheer ruffle sleeves, waist sash, and bow trim. Includes skull printed head scarf. (Sword and pantyhose not included) (2 Piece Set)



Style A8918

“Native Beauty”

S, M, L, XL, 1X/2X, 3X/4X

Ultra suede dress with Native American trim, attached belt, and matching headpiece. (Spear not included) (2 Piece Set)



(Shown With)
Style 7034

“Fishnet Pantyhose”
O/S



Style A8922
"R.eally N.aughty"
S, M, L, XL

Nurse dress with attached apron and nurse hat. (Thigh highs, clipboard and pen not included)
(2 Piece Set)



Cap sleeve maid dress with lace overlay and bow detail.
Includes choker and maid hat. (Gloves, duster, petticoat and thigh highs not included)
(3 Piece Set)

Style A9507
"Maid For You"
S, M, L, XL, 1X/2X, 3X/4X



Style A8953
"Teacher's Pet"
S, M, L, XL

Black and plaid zip-front vest style schoolgirl dress with school crest detail, faux collared shirt and plaid necktie. (Thigh highs, bow stocking pins, and hair bows not included) (2 Piece Set)

(Shown With) Style 7031 "Sheer Thigh High"
Black, Red, White
O/S



White and red plaid shirt with collar, attached red plaid tie and front pocket, and pleated plaid skirt. (Thigh highs not included) (2 Piece Set)

Style A9509
"She's Got Class"
S, M, L, XL



Dress with attached clover screen print apron, front faux lace-up and bow detail, and mini leprechaun hat. (Thigh highs not included)
(2 Piece Set)

Style A8967
"Lucky You"
S, M, L, XL, 1X/2X, 3X/4X



Style A8967X
"Lucky You"
S, M, L, XL, 1X/2X, 3X/4X

Dress with attached clover screen print apron, front faux lace-up and bow detail, and mini leprechaun hat. (Thigh highs not included)
(2 Piece Set)



Style A9981X
"S.W.A.T Police"
S, M, L, XL, 1X/2X, 3X/4X

Black knit dress with front zipper and "S.W.A.T" screen print. Includes hat and police badge. (Baton and glasses not included)
(3 Piece Set)



Style A9507X
“Maid For You”
S, M, L, XL, 1X/2X, 3X/4X

Cap sleeve maid dress with lace overlay and bow detail. Includes choker and maid hat. (Gloves, duster, petticoat and thigh highs not included)
(3 Piece Set)



Style A8918X
“Native Beauty”
S, M, L, XL, 1X/2X, 3X/4X

Ultra suede dress with Native American trim, attached belt, and matching headpiece. (Spear not included)
(2 Piece Set)

Style A8924X
“Walk Like an Egyptian”
S, M, L, XL, 1X/2X, 3X/4X

Egyptian styled dress with gold lamé trim and matching armbands. (Wig not included)
(2 Piece Set)



Style A8920X
“Geisha”
S, M, L, XL, 1X/2X, 3X/4X

Gold lamé trim geisha dress with obi corset detailing and gold bow. (Chopsticks not included)
(1 piece set)



Styles 9947, 9964 & 10001



Dreamgirl

The images and graphics in this catalogue [or CD] are the copyright-protected work of DG Brands International. Any use or reproduction without the express written consent of DG Brands International is strictly prohibited. Violators will be prosecuted to the fullest extent of the law.

COPYRIGHT © MMXV