

Dreamgirl®

2014年コスチュームは、7月～10月の
入荷予定となります。
入荷しない商品も発生しますので、
あらかじめご承知おきください。

カタログ番号 LDG2014_COS

Lady Cat ハッピーコスチューム by Cat Fish Club



スマートフォンからは



<http://smart.ladycat.com>



PCからは

ハッピーコスチューム

<http://www.happycostume.com>



携帯からは

Cat Fish Mini

<http://catfishmini.com>

2014/2015 COSTUME COLLECTION



Styles 8754, 8815, 9404, 9405, 9407, 9409, 9451, 9454, 9472





of the Warriors

battle

Style 9407



Clearly this warrior has no shame, creating scandal has always been her game.



Style 9407

Black velvet dress with high-low hemline, silver sequin waistline and hem trim, embellished and embroidered Royal Lion silver crest and attached long red chiffon sash. Includes rhinestone headpiece and silver lamé armbands. (Sword not included) (3 piece set)



S, M, L, XL,
1X/2X, 3X/4X



She was more than willing to do her duty, but no one wanted to battle with this elegant beauty.

Style 8752

"Bring It"

S, M, L, XL

Jewel encrusted black dress has lightly padded underwire cups and an attached red cape. Adjustable headpiece included. (Sword not included) (2 piece set)



All the women had such fun, when they went to war against 301.

Style 8750

"301"

M, L, XL, XXL

Silver and black latex vest with warrior detailing and adjustable back. Red satin cape and warrior skirt included. (Sword and shield not included) (3 piece set)



When you see this warrior beauty, you will know from the start, that when she goes to battle, she will conquer every heart.



Style 9487
 "Dragon Warrior Queen"
 S, M, L, XL

Shimmering gold foil printed turquoise knit dress with gold sequin dragon appliqué has attached gold foil printed turquoise cape. Includes gold lamé wrist gauntlets. (Sword not included) (2 piece Set)



It wasn't from fear that all the women of his kingdom couldn't help but stare.



Brown distressed leather look tunic with contrast waistband and long brown velvet cape with faux fur collar, detachable straps and attached crossed warrior bands. (Sword, gloves, shield and pants not included) (2 piece Set)

(Shown with) Style 6379 "Men's Basic Pant" Black, White
 M, L, XL, XXL

Style 9409
 "Dragon Warrior King"
 M, L, XL, XXL

Style 9404

"Queen of Swords Warrior"

S, M, L, XL

This warrior always has such fun, she parties it up when the battle is won.



Gold and black foil dress with unique chainmail armor print, metal stud trim and gold cross appliqué. Includes headpiece and wrist gauntlets. (Sword and shield not included) (3 piece set)

Style 9454

“Hercules”

M, L, XL, XXL

Distressed brown leather look tunic has gold trim detailing, attached belt and red cape. Includes wrist gauntlets and arm tie. (Sword and shield not included)
(3 piece set)

Hercules! Hercules! Hercules!





*The women he conquered
never got bored, because
this warrior had a very long
sword.*

Style 9405

“King of Swords”

M, L, XL, XXL

Gold and black
chainmail armor-look
knit tunic with
embellished cross
appliqué crest, attached
cape and sash. (Sword,
gloves, shield and pants
not included)
(1 piece Set)

(Shown with)
Style 6379
“Men’s Basic Pant”
Black, White
M, L, XL, XXL

Style 8754

“One Hot Knight”

M, L, XL, XXL

Black warrior tunic has an ornate warrior crest and silver detailing. (Sword, shield and pants not included) (1 piece set)

(Shown with)
Style 6379
“Men’s Basic Pant”
Black, White
M, L, XL, XXL



The women of his kingdom knew they would never be bored, because this hot knight, knew what to do with his long sword.

Style 8971

“Warrior of Darkness”

S, M, L, XL

Stretch knit black reptile imprinted dress with glossy stretch vinyl accents and front zipper. Includes wrist gauntlets and adjustable jeweled headpiece. (Sword not included) (3 piece set)



Out into battle this beauty would roam, and then all of the warriors would follow her back home.



Convertible

Going to battle just wouldn't be right, if your opponent looked like this hot knight.



Style 8755

“One Hot Knight”

S, M, L, XL



Silver and black metallic dress is adorned with sequined appliqué on the front bodice. The strategically placed zipper across skirt hemline allows the dress to go from ankle length to short and sexy. Once unzipped, the bottom of the dress can be worn as a cape. Headpiece and wrist gauntlets included. (Sword not included) (3 piece set)

This warrior always has time for fun, even though there are battles to be won.

Convertible



Convertible corset style dress with lightly padded underwire cups, adjustable shoulder straps and attached jeweled belt. The strategically placed zipper across skirt hemline allows the dress to go from ankle length to short and sexy. Once unzipped, the bottom of the dress can be worn as a cape. Includes wrist gauntlets, sword and headpiece. (4 piece set)

Style 8181

"Remember the Trojans"

S, M, L, XL

Style 6422

"Babe-A-Lonian Warrior Queen"

S, M, L, XL

Metallic brown stretch knit dress has exquisite sequined appliqué with bead detail and attached chiffon cape. Metallic gold foil detailing on waistband, hemline and wrist gauntlets. Includes headpiece with bead detail. (4 piece set)



Style 8123

"Golden Gladiator"

S, M, L, XL, 1X/2X, 3X/4X

Crinkled foil lamé dress with elaborate sequin and stud adorned warrior neckline appliqué and attached chiffon cape. Includes faux vinyl studded waist corset with boning, dagger and Roman trim headpiece. (Sword not included) (3 piece set)



Dreamgirl Couples

Styles 9443 & 9444





(Female Costume)
Style 9443
"Special Ops"
S, M, L, XL

Sleek and sexy black jumpsuit with buckle front detailing and Special Operations patch. Includes bullet belt. (Walkie-talkie, handcuffs and sunglasses not included)
(2 Piece Set)

(Male Costume)
Style 9444
"Special Ops"
M, L, XL, XXL

Black heavy duty vest has bullet holders, utility pockets, SWAT Police back screen print and special SWAT patch. Includes dickey with face mask and arm band with embroidered Special Ops patch. (Sunglasses, baton and helmet not included)
(3 piece set)



Sergeant Dick Spectacular was his name. Once he handcuffed you, you were never quite the same.



This sexy cop has such glam, wherever she goes she creates a traffic jam.



(Male Costume)
Style 9438

"Sergeant Dick Spectacular"

M, L, XL, XXL

Black cotton long sleeve work shirt with police patches on both shoulders and the chest. Includes police hat with badge, police badge pin, and Sergeant Dick Spectacular nameplate. (Belt, baton, walkie-talkie, sunglasses and handcuffs not included) (4 piece Set)

(Female Costume)
Style 9441

"Traffic Stopping Cop"

S, M, L, XL

Zip front black knit dress has pink vinyl trim and police patches. Includes Officer Anita Bigone nameplate, pink shiny vinyl police hat with badge, pink vinyl belt, police badge pin and handcuffs. (Fingerless gloves, pantyhose and baton not included) (6 piece set)

(Shown With)

Style 7034

Black

O/S

Fishnet pantyhose with back seam.



(Male Costume)
Style 9411
"Dr. Bud Smoker"
M, L, XL, XXL

Men's lab coat with front and back screen print.
Dr. Bud Smoker name plate included.
(Pants and shirt not included)
(2 piece Set)

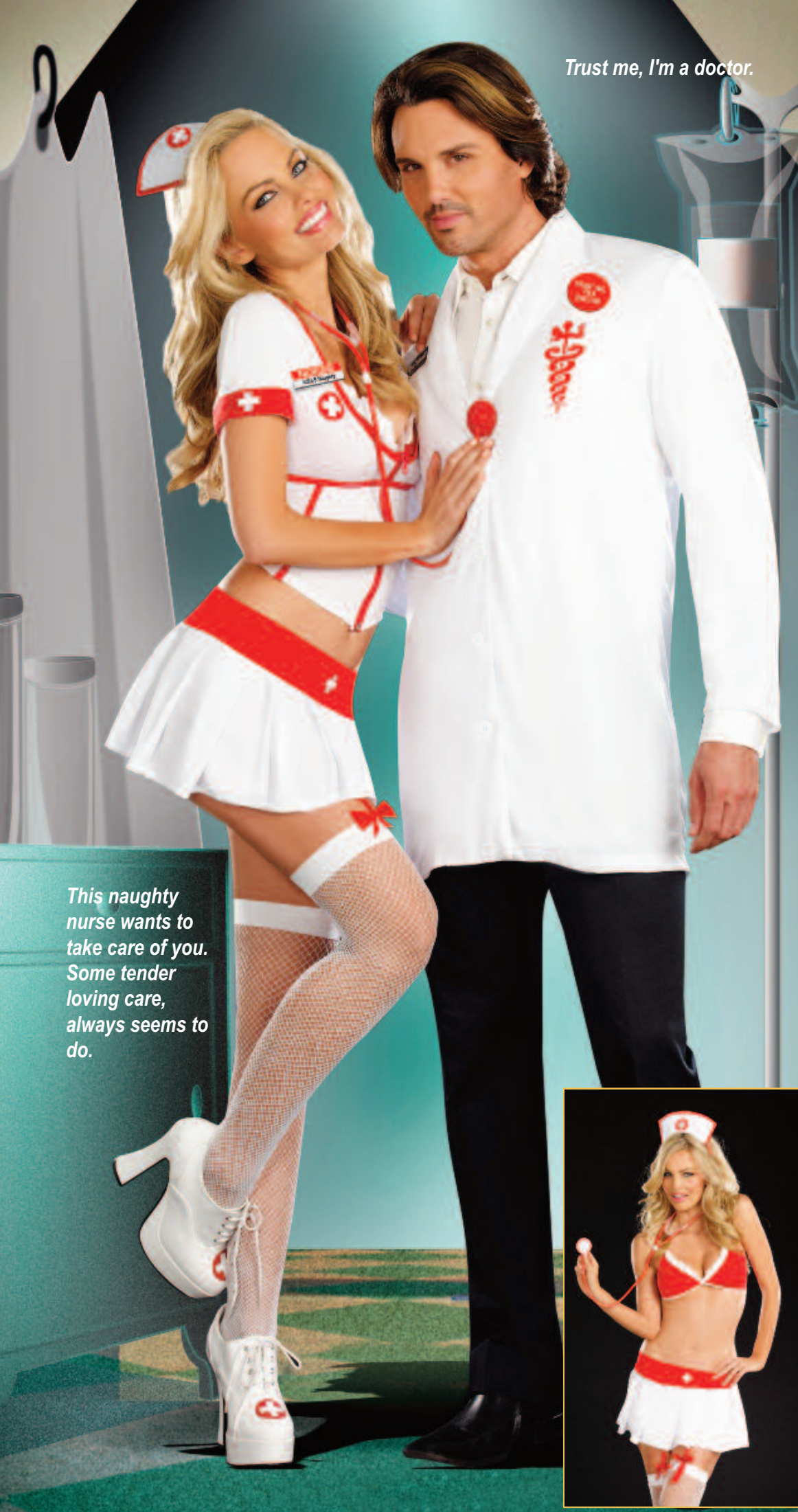
(Female Costume)
Style 9435
"Nurse Anita Reefer"
S, M, L, XL

White nurse's uniform with green accents and cross screen prints.
Includes nurse's hat, Nurse Anita Reefer name plate, and stocking topper bow pins.
(Thigh highs not included)
(4 piece Set)

This is your lucky day, Dr. Bud Smoker is going to make your problems go away.

Once she takes a look at your case, this helpful nurse can put a smile on your face.





Trust me, I'm a doctor.

This naughty nurse wants to take care of you. Some tender loving care, always seems to do.



Style 8780

"Nurse Anita B. Naughty"
S, M, L, XL

Convertible nurse costume with removable zip front top, red bra top, pleated skirt, garters, nurse's cap and stethoscope. (Thigh highs not included) (6 piece set)



White lab coat with front and back screenprints. Includes "Trust Me I'm a Doctor" pin, stethoscope and "Dr. Oliver Clothesoff" name plate. (Pants not included) (4 piece set)

Style 8873

"Dr. Oliver Clothesoff"
M, L, XL, XXL



This smokin' hot fireman always comes equipped with his long hose ready.

This smokin' hot fire fighter loves when things heat up.

Style 6550

"Smokin' Hot Fireman"
M, L, XL, XXL

Buckle front jacket with reflective tape trim detail. Includes knit tank top with "Fire Department" heat transfer and fireman hat. (Pants not included) (3 piece set)

Style 6524

"Smokin' Hot Fire Fighter"
S, M, L, XL,

Black gloss microfiber two-way zip front dress with reflective tape trim detail and "Smokin'" knit bra top. Includes reflective tape belt, fire hat and matching boot toppers. (5 piece set)

Corruption was his middle name. Banging heads was his game.

Even fugitives on the run, thought getting arrested by this sexy cop, would be kind of fun!

As a proud member of the Mile High Club, this pilot makes sure his passengers always come first.

This naughty pilot always thinks it's sweet to get down and dirty at 20,000 feet.

Style 8817

"Dirty Cop Officer Ed Banger"

M, L, XL, XXL

Black sleeveless collared shirt with front pockets, police patch and removable necktie. Includes police hat with badge pin, "Officer Ed Banger" name plate, removable police badge and arm band. (Sunglasses, handcuffs, baton and pants not included) (6 piece set)

Black bengaline stretch knit dress with belt and police patches on shoulders. Costume includes police hat with badge pin, "Officer Anita Bribe" name plate and removable police badge. (Handcuffs not included) (6 piece set)

Style 8816

"Dirty Cop Officer Anita Bribe"

S, M, L, XL, 1X/2X, 3X/4X

Style 5236

"Mile High Pilot Hugh Jorgan"

M, L, XL, XXL

Button front jacket with satin and gold trim details. Includes pilot hat, collar with necktie and removable "Mile High Pilot Hugh Jorgan" name badge. (Pants not included) (4 piece set)

Button front long sleeved pilot's dress with gold braid detail. Includes pilot hat and removable "Mile High Pilot" badge. (3 piece set)

Style 8192

"Mile High Pilot Sheila B. Bangin' "

S, M, L, XL

If this sexy gangster is the one you choose, he might make you an offer you can't refuse.

You might think this mobster boss is so much fun, until you're staring down the barrel of her gun.

Many a woman he did choose, while doing the Hustle in his platform shoes.



Style 8190

"Gangsta"

M, L, XL, XXL

Black and white pinstripe double breasted gangster suit. Includes a dickie, machine gun screen-printed tie, carnation pin and hat. (Shirt not included) (6 piece set)

Gangster pinstripe knit dress with sexy peak-a-boo scalloped lace neckline and matching shorts.

Includes hat with feather, belt, carnation pin and choker. (Thigh highs and stocking toppers not included) (6 piece set)

Style 8188

"Mobster Boss"

S, M, L, XL

Style 9468

"Disco Dude"

M, L, XL, XXL

Black polyester button front shirt with metallic holographic disco dot. (Sunglasses, necklace and pants not included) (1 piece Set)

(Shown With) Style 9605 "Men's Disco Pant" Black M, L, XL, XXL

Black stretch knit jumpsuit with metallic holographic disco dot. Includes stretch pink sequin belt. (Jewelry not included) (2 piece Set)

Style 9469

"Disco Doll"

S, M, L, XL

(Female Costume)
Style 9433
"Rock the Ship"
S, M, L, XL

Black velvet dress with underwire foam cups, unique metallic gold printed rope design and sequin patch. Includes matching shrug, pirate's hat, and waist sash. (Sword, jewelry and pantyhose not included) (4 piece Set)

(Shown With)
Style 7034
Black
O/S
Fishnet pantyhose
with back seam.



(Male Costume)
Style 9434
"Rock the Ship"
M, L, XL, XXL

Black velvet pirate's coat with a unique metallic gold printed rope design on the lapels, collar and cuffs. Includes head scarf with gold skull appliqué, white satin ruffled dickey, and metallic gold and black striped waist sash. (Pants, shirt and sword not included) (4 piece set)

(Shown with)
Style 6379
"Men's Basic Pant"
Black, White
M, L, XL, XXL



This Pirate cutie always gets a lot of booty.

Don't come a knockin', when his ships a rockin'!

He was a bloody fun guy with great taste in women.

You might think this beauty is quite a sight, until you try to kiss her, and she gives you a bite.

(Female Costume)
Style 9422

"Killing Me Softly"

S, M, L, XL, 1X/2X, 3X/4X

Black and red velvet Victorian styled dress with high-low hemline has an exquisite sequined, embroidered neckline piece, vampire collar and sheer black chiffon sleeves. (Jewelry and pantyhose not included) (1 piece Set)



(Shown With)
Style 7034
Black
O/S

Fishnet pantyhose with back seam.



(Male Costume)
Style 9502

"Dracula"

M, L, XL, XXL

Satin vest with attached dickey has detachable cape with a vampire collar. Includes collapsible hat. (Pants and shirt not included) (3 piece Set)

(Shown with)
Style 6379
"Men's Basic Pant"
Black, White
M, L, XL, XXL

(Female Costume)
Style 8778

“Dead Sexy”

S, M, L, XL

Black dress with attached red waist corset, tiered satin skirt and collared cape. Lace choker with vampire bite detail and lace gloves included. (Earrings not included) (3 piece set)

(Male Costume)
Style 8765

“Dead Sexy”

M, L, XL, XXL

Black velvet gothic vampire shirt with ruffled detailing, red vampire collar and large cross appliqué on the back of shirt. (1 piece set)

(Shown with)
Style 6379
“Men’s Basic Pant”
Black, White
M, L, XL, XXL



This naughty Vampire comes to women in their dreams, he sucks their necks and makes them scream!



(Male Costume)
Style 8177

“Just One Bite”

M, L, XL, XXL

Black velvet vampire waistcoat with contrast satin lapels and cuffs. Front lapels have gothic embroidered satin appliqué crosses with rhinestones. Coat back has embroidered fiber optic light-up cross. Includes a white satin ruffle dickie, instructions, hidden pocket for on/off switch and batteries. (Shirt and pants not included) (2 piece set)

(Female Costume)
Style 8176

“Just One Bite”

S, M, L, XL

Velvet vampire dress with stretch lace and flocked satin with gothic crosses on lightly padded underwire cups and stand-up collar. Back features lace-up detail to accentuate curves. (Jewelry not included) (1 piece set)



This sexy vampire can be such a fright, when he pulls you close and takes a bite!



In love with this pirate, the wenches did fall, after he made his booty call.



Her precious booty was a pirate's delight, on her ship late at night.

Style 8774

“Looking for Booty”

M, L, XL, XXL

Black pirate's top with heat transfer metal stud skull. Black faux leather vest, red waist sash and headpiece included. (Pants and sword not included) (4 piece set)

Black off-the-shoulder peasant dress with sheer sleeves, ruffled satin skirt and red bodice with black lace overlay. Includes pirate's hat and belt with skull buckle. (Panty hose not included) (3 piece set)

Style 8757

“Precious Booty”

S, M, L, XL

All the women had such fun, when they went to war against 301.

She was more then willing to do her duty, but no one wanted to battle with this elegant beauty.

Going to battle just wouldn't be right, if your opponent looked like this hot knight.

The women of his kingdom knew they would never be bored, because this hot knight, knew what to do with his long sword.



Style 8750

"301"

M, L, XL, XXL

Silver and black latex vest with warrior detailing and adjustable back. Red satin cape and warrior skirt included. (Sword not included) (3 piece set)

Jewel encrusted black dress has lightly padded underwire cups and an attached red cape. Adjustable headpiece included. (Sword not included) (2 piece set)

Style 8752

"Bring It"

S, M, L, XL

(Female Costume)
Style 8755
"One Hot Knight"
S, M, L, XL,
1X/2X, 3X/4X
Silver and black metallic dress is adorned with sequined appliqué on the front bodice. The strategically placed zipper across skirt hemline allows the dress to go from ankle length to short and sexy. Once unzipped, the bottom of the dress can be worn as a cape. Headpiece and wrist gauntlets included. (3 piece set)

Black warrior tunic has an ornate warrior crest and silver detailing. (Sword, shield and pants not included) (1 piece set)

(Male Costume) Style 8754

"One Hot Knight"

M, L, XL, XXL

(Male Costume)
Style 9405
"King of Swords"
M, L, XL, XXL

Gold and black chainmail armor-look knit tunic with embellished cross appliqué crest, attached cape and sash. (Sword, gauntlet, shield and pants not included)
(1 piece Set)

(Shown with)
Style 6379
"Men's Basic Pant"
Black, White
M, L, XL, XXL

(Female Costume)
Style 9404
"Queen of Swords Warrior"
S, M, L, XL

Gold and black foil dress with unique chainmail armor print, metal stud trim and gold cross appliqué. Includes headpiece and wrist gauntlets. (Sword and jewelry not included)
(3 piece set)



The women he conquered never got bored, because this warrior had a very long sword.

This warrior always has such fun, she parties it up when the battle is won.

It wasn't from fear that all the women of his kingdom couldn't help but stare.

When you see this warrior beauty, you will know from the start, that when she goes to battle, she will conquer every heart.

(Male Costume)
Style 9409

"Dragon Warrior King"

M, L, XL, XXL

Brown distressed leather look tunic with contrast waistband and long brown velvet cape with faux fur collar, detachable strap and attached crossed warrior bands. (Sword, gauntlet, shield and pants not included)
(2 piece Set)

(Shown with)
Style 6379
"Men's Basic Pant"
Black, White
M, L, XL, XXL

(Female Costume)
Style 9487

"Dragon Warrior Queen"

S, M, L, XL

Shimmering gold foil printed turquoise knit dress with gold sequin dragon appliqué has attached gold foil printed turquoise cape. Includes gold lamé wrist gauntlets.
(2 piece Set)

(Male Costume)
Style 9474

“Prince Charming”

M, L, XL, XXL

Tunic with gold embroidered royal crest, gold fringed epaulets and matching belt. Includes elastic waist pants with gold trim. (3 piece Set)

(Female Costume)
Style 9473

“Having a Ball”

S, M, L, XL

Blue satin dress with jeweled neckline trim, high-low hemline, sheer puff sleeves and sparkly print skirt. Includes crown. (Jewelry, satin gloves and thigh highs not included) (2 piece set)

(Shown with)
Style 7030
“Sheer Thigh High”
Black, White
O/S, O/S Queen



*Finding a princess can be hard to do,
not every fair maiden can fit in that
glass shoe!*

*Every princess knows they
must be pretty and clever,
or finding a prince might
just take forever!*



Who's afraid of the Big Bad Wolf?

The fairytale does tell, if your grandma suddenly has a deep voice, big eyes and mouth, you may want to run like hell.

(Male Costume)
Style 9493

"Big Bad Wolf"

M, L, XL, XXL

Men's red and black check jagged edge tunic with faux fur hood with wolf ears. Includes fingerless gloves. (Pants not included) (2 piece Set)

(Shown with)
Style 6379
"Men's Basic Pant"
Black, White
M, L, XL, XXL

(Female Costume)
Style 9477

"Little Red"

S, M, L, XL, 1X/2X, 3X/4X

Beautifully detailed fairytale dress includes underwire foam cups with pleated ruffles, embroidered heart trim, and lace-trimmed apron. Includes full length hooded satin cape. (Basket, thigh highs, stocking bows, and satin gloves not included) (2 piece Set)



(Shown with)
Style 5218
"Luna Glove"
Black, White
O/S

Style 9450

“Elf Princess”

S, M, L, XL

Gold foil printed white stretch knit dress with gold sequined neckline appliqué, attached golden sheer hood, open floor length sleeves and skirt that opens from the front and back. Includes latex elf ears and adjustable golden medieval headpiece. (Jewelry not included) (3 piece set)

Style 9498

“Medieval Elf”

M, L, XL, XXL

Red men's tunic has attached belt with authentic Celtic design. Includes wrist gauntlets, latex elf ears, and hooded cape. (Sword and boot covers not included) (4 piece set)

(Shown with)
Style 6379
“Men's Basic Pant”
Black, White
M, L, XL, XXL

This elegant beauty is all ears.

Venturing beyond middle earth for an elf can be risky, but his desire for earthly women leaves him ever so frisky.





Dripping with gold and rubies too, this beautiful queen always knows what to do.

This handsome king is a great ruler indeed, he satisfies the women in his kingdom, when they are in need.

Style 8848

"Royally Yours"
(Women's)

S, M, L, XL

Red velvet and gold satin dress with sequin embellished lace neckline and high-low hemline. Jeweled crown included. (Necklace not included) (2 piece set)

Red and black tunic with metallic appliqués and gold trim. Crown and belt included. (Sword and pants not included) (3 piece set)

Style 8844

"Royally Yours"
(Men's)

M, L, XL, XXL



Every inch of this mighty God is simply heavenly!

This ethereal beauty seems to have dropped from above, she is Aphrodite, the goddess of love!

Style 8860

"He's a God"

M, L, XL, XXL

White tunic with gold satin attached cape and matching trim. Gold leaf headpiece, removable belt and wrist gauntlets included. (4 piece set)

Goddess dress with gold sequined embroidery and gold trim. The strategically placed zipper across skirt hemline allows the dress to go from ankle length to short and sexy. Once unzipped, the bottom of the dress can be worn as a cape. Rhinestone headpiece and armbands included. (3 piece set)

Style 8861

"Goddess of Love, Aphrodite"

S, M, L, XL,
1X/2X, 3X/4X

Cleopatra knew from the start, that this mighty warrior would win her heart.

This radiant beauty will captivate you with her smile, she's the hottest thing on the Nile.



Style 8839 Sueded fabric with print tunic has attached cape and belt. Gold leaf headpiece included. (2 piece set)
M, L, XL, XXL

One shoulder dress embellished with sequins, jewels and embroidery. Jeweled crown and gold armbands included. (3 piece set)

Style 8814 "Queen of De Nile"
S, M, L, XL,
1X/2X, 3X/4X



Cleopatra could not resist this pharaoh king's kiss...

She likes to strut for King Tut!



Style 8941 "Pharaoh King"
M, L, XL, XXL
Men's tunic with elastic waist and jeweled collar. Includes matching belt with hieroglyphic details, headpiece and wrist gauntlets. (4 piece set)

Holographic golden prism stretch microfiber dress with keyhole jeweled neckline and adjustable length hemline. Includes belt with hieroglyphic details and adjustable beaded headpiece with Asp detail. (3 piece set)

Style 8126 "Naughty on the Nile"
S, M, L, XL



This Chief wants to show you his pow WOWWWW!!!

This native beauty has such allure, she's reservation royalty for sure.



Style 8197

"Chief Wansum Tail"

M, L, XL, XXL

Native American styled ultra suede fringed shirt and pants with feather headdress. (3 piece set)

Ultra suede dress has Native American beaded appliqué and fringe detail. Includes a headpiece with feathers and matching beaded appliqué. (2 piece set)

Style 8196

"Reservation Royalty"

S, M, L, XL

How about a little tribal trouble?



The other braves thought it was wrong, that the chief was blessed with an arrow so long.

Style 5877

"Pocahottie"

S, M, L, XL
1X/2X, 3X/4X

Faux suede dress with intricate beaded neckline and layered fringe hem. Includes matching beaded headpiece with feathers. (2 piece set)

Native American styled ultra suede fringed shirt and pants with feather headdress. (3 piece set)

(Male Costume)
Style 9189

"Chief Long Arrow"

M, L, XL, XXL

best of

the West

Style 9413

Style 9413

"Tribal Temptation"

S, M, L, XL

*This beautiful native much prefers
"making reservations" to hunting buffalo.*

Bright turquoise
ultra suede dress with
asymmetrical fringed
hemline and intricately
beaded Native
American neckline.
Includes beaded
headpiece.
(2 piece set)



Style 5877

“Pocahottie”

S, M, L, XL, 1X/2X, 3X/4X

Faux suede dress with intricate beaded neckline and layered fringe hem. Includes matching beaded headpiece with feathers. (2 piece set)



How about a little tribal trouble?

Style 8871

“Queen of the Tribe”

S, M, L, XL

Fringed ultra suede dress with side tie detail and Native American beaded appliqué. Includes matching beaded headpiece with elastic back. (2 piece set)



Braves would come from miles around, to see if this tribal queen could be found.

The other braves thought it was wrong, that the chief was blessed with an arrow so long.



Style 9189

“Chief Long Arrow”

M, L, XL, XXL

Native American styled ultra suede fringed shirt and pants with feather headdress. (3 piece set)

Style 7587

“Tribal Trouble”

S, M, L, XL

Stretch knit faux suede dress with intricate bead detailing at waist and full fringe hemline on dress. --Includes matching headpiece. (2 piece set)



She's captured the heart of many a brave, and then turned them into her love slave.

Style 8196

"Reservation Royalty"
S, M, L, XL

Ultra suede dress has Native American beaded appliqué and fringe detail. Includes a headpiece with feathers and matching beaded appliqué. (2 piece set)



This native beauty has such allure, she's reservation royalty for sure.

Why is it that every male is always hot on this beauty's trail?



Style 8198

"Hot On The Trail"
S, M, L, XL, 1X/2X, 3X/4X

Native American inspired ultra suede fringed dress with beaded neckline detail. Includes colorfully beaded belt and headpiece. (Jewelry not included) (3 piece set)



Style 8197

"Chief Wansum Tail"
M, L, XL, XXL

Native American styled ultra suede fringed shirt and pants with feather headdress. (3 piece set)



This Chief wants to show you his pow WOWWWW!!!

Many a warrior she did delight in her teepee late at night.



Style 5076

"Tribal Princess"
XS, S, M, L

Stretch faux suede dress with feather and turquoise bead trim lace-up neckline and fringe hem. Includes matching feather headpiece, armband and tomahawk. (4 piece set)

Style 9414

"Shoot 'em Up"

S, M, L, XL, 1X/2X, 3X/4X

Black distressed leather look fringed dress and vest with silver metal star detailing and Longhorn Bull pin. Includes cowboy hat and bandana. (Bullwhip not included)
(4 piece Set)

You may want to make this cowgirl your bride, when she saddles you up and takes you for a ride.



Style 8756

"Prairie Rose Cutie"
S, M, L, XL

Western style black and red cowgirl dress with sequin rose patches and snap front details. Includes cowboy hat, neck scarf and fringed wrist cuffs. (4 piece set)



This sexy cowgirl likes to show them what she's got. Some might say she's Hot to Trot!



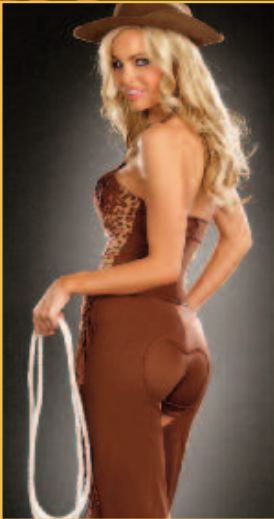
In record speed those cowboys trot, to see this cowgirl that's bangin' hot!



Style 8751

"Bangin' Hot Cowgirl"
S, M, L, XL

Brown ultra suede chaps with attached belt in the front and heart shaped opening in the back with matching hot shorts. Animal print ultra suede fringed top with lightly padded underwire cups and halter ties. Cowboy hat included. (Rope not included) (4 piece set)



Style 8779

"Night Ranger"
S, M, L, XL

Black dress with silver sequin trim, ruffles and high-low hem. Includes white cowboy hat, mask, neck scarf, Sheriff's badge and waist cincher belt. (Rope not included) (6 piece set)



This mysterious beauty has secrets to hide, apparently her horse isn't all she likes to ride.



This sexy cowgirl may look like fun, but you better watch out for her Daddy's gun!



Style 8216

"Giddy Up"
S, M, L, XL, 1X/2X, 3X/4X

Western style ultra suede cowgirl dress with hook & eye front closure, star grommets, fringe and lace-up detailing. Includes cowboy hat, neck scarf and pin. (Rope not included) (3 piece set)





the Ages

through

Style 9451



Style 9472

“Medieval Beauty”

S, M, L, XL

Blue velvet dress with shimmering sequined neckline piece. Dress has sheer bottom lined with sequin trim and golden mesh open sleeves. Includes jeweled crown. (2 piece set)

This Medieval beauty has seduced many a knight, in her castle late at night.



*This medieval beauty has a busy day,
her castle's a mess and there's a
dragon to slay.*

Black velvet dress with
high-low hemline,
exquisite 3-dimensional
appliquéd neckline
piece, contrast red
velvet and sheer chiffon
sleeves. Includes
adjustable golden
Medieval head piece.
(Necklace not included)
(2 piece set)



Style 8815
"Queen of Thrones"
S, M, L, XL, 1X/2X, 3X/4X

Purple velvet embroidered and sequined gown with satin lined Renaissance sleeves and high-low hemline. Gown is trimmed with gold sequins throughout. Velvet and gold headpiece with veil included. (Jewelry not included) (2 piece set)



She was a stunning beauty on her thrown, and when she went to her chambers, she was never alone.



Style 9471

"The Royals"

S, M, L, XL

This Royal beauty has such fun; she never bows down to anyone.

Red velvet dress with faux ermine collar has sequined lace hemline and an attached full length satin cape. Includes a mini crown and choker. (Bracelet, satin gloves, thigh highs and scepter not included) (3 piece set)

(Shown with)
Style 5218
"Luna Glove"
Black, White
O/S

(Shown with)
Style 7030
"Sheer Thigh High"
Black, White
O/S, O/S Queen



Style 8865

“Masquerade”

S, M, L, XL

Black velvet dress with
flocked print, sequins
and lace trim over
magenta satin corset style
front. Venetian style
mask and black pearl
headband included.
(Jewelry and thigh highs
not included)
(3 piece set)

*Deeply in love they all did fall,
when they danced with her at the
Masquerade Ball.*

(Shown with)
Style 7030
“Sheer Thigh High”
Black, White
O/S, O/S Queen



Style 9467

"Marie Antoinette"

S, M, L, XL

*This French babe is a real party dame,
losing her head over the fun and the
fame.*

This 18th Century styled velvet French dress features sequined appliqué lace with a French dot, shimmering satin and holographic sequin trim. Includes choker with chiffon rose.
rose.
(Wig, fan, thigh highs and jewelry not included)
(2 piece set)



This handsome king is a great ruler indeed, he satisfies the women in his kingdom, when they are in need.



Style 8844
"Royally Yours" (Men's)
M, L, XL, XXL

Red and black tunic with metallic appliqués and gold trim. Crown and belt included. (Sword not included)
(3 piece set)

(Shown With) Style 6379 "Men's Basic Pant"
Black, White
M, L, XL, XXL

Dripping with gold and rubies too, this beautiful queen always knows what to do.



Style 8848
"Royally Yours" (Women's)
S, M, L, XL

Red velvet and gold satin dress with sequin embellished lace neckline and high-low hemline. Jeweled crown included. (Necklace not included)
(2 piece set)

Style 9463

"Nefertiti"

S, M, L, XL

*Tempted are many on the Nile, when
this golden seductress flashes a smile.*

Egyptian patterned
sequin design dress
with gold foil print
pleated chiffon bottom,
sequin collar with
attached cape,
removable/adjustable
straps and sequin
armbands. Includes
gold coin crown.
(Earrings not included)
(2 piece Set).



Style 8126
"Naughty on the Nile"
S, M, L, XL

Holographic golden prism stretch microfiber dress with keyhole jeweled neckline and adjustable length hemline. Includes belt with hieroglyphic details and adjustable beaded headpiece with Asp detail. (3 piece set)



She likes to strut for King Tut!



Tempted are many on the Nile, when this golden seductress flashes her smile.



Style 8941
"Pharaoh King"
M, L, XL, XXL

Men's tunic with elastic waist and jeweled collar. Includes matching belt with hieroglyphic details, headpiece and wrist gauntlets. (4 piece set)

Cleopatra could not resist this pharaoh king's kiss...



Style 8209
"Cleo"
S, M, L, XL

Exquisite sequin gown with gold pleated satin skirt and Egyptian designed sequin trim detail. Attached gold pleated cape has four attached Egyptian inspired sequined arm bands. Includes headpiece with cascading rhinestones. (2 piece set)

*Cleopatra knew from the start,
that this mighty warrior would win
her heart.*



*This radiant beauty will
captivate you with her smile, she's
the hottest thing on the Nile.*



Style 8839

"Caesar"

M, L, XL, XXL

Sueded fabric with print tunic has
attached cape and belt. Gold leaf headpiece
included.
(Sword not included) (2 piece set)



One shoulder dress embellished with sequins, jewels
and embroidery. Jeweled crown and gold armbands
included.
(3 piece set)

Style 8814

"Queen of De Nile"

S, M, L, XL, 1X/2X, 3X/4X

Style 9466

“Flower Power”

S, M, L, XL

1960's styled sequined
color block go-go dress
with sequin flower details.
Includes sequin
headband.
(Jewelry not included)

Psychedelic fun for everyone.



Many a woman he did choose, while doing the Hustle in his platform shoes.



This Disco Doll was in hot pursuit, of a Disco guy in a three-piece suit.



Style 9468

"Disco Dude"

M, L, XL, XXL

Black polyester button front shirt with metallic holographic disco dot. (Pants not included)
(1 piece set)

(Shown With) Style 9605 "Men's Disco Pant"
Black M, L, XL, XXL

Black stretch knit jumpsuit with metallic holographic disco dot. Includes stretch pink sequin belt.
(2 piece set)

Style 9469

"Disco Doll"

S, M, L, XL

Shall we shag now, or shall we
shag later?



Style 8864

"Groovy Baby"

S, M, L, XL

Hot pink dress with beaded fringe hemline and multi colored
sequin appliques. Includes matching headband.
(Jewelry not included)
(2 piece set)

She's got the Go Go beat
that can't be beat!



Stretch knit retro pattern A-line Go Go dancer dress has bell
shaped long sleeves and unique shaped neckline.
Includes matching retro glasses, earrings, headband and
faux vinyl daisy belt.
(5 piece set)

Style 8158

"Go Go Gorgeous"

S, M, L, XL



She has it all under the disco ball!

Style 8842

"Shake Your Groove Thang"

S, M, L, XL

Retro styled dress with large hanging sequin paillettes on front and back. Includes faux vinyl hat and bracelet.
(Glasses not included)
(3 piece set)



Rock out with your c&% out!*



Men's rocker costume includes a zebra printed stretch knit sleeveless shirt, faux vinyl vest with stud trim, and stretch knit ciré zebra leggings. Matching head tie, one leg tie and one wrist cuff. (Wig not included) (6 piece set)

(Shown with) Style 8965 "Rocker Wig" Brown O/S
Light-up brown mullet style synthetic wig with hidden pocket for on/off switch.

Style 8857

"Rockstar"

M, L, XL, XXL



& Dolls

guys

Style 9456 & 9458



Style 9458

“Life’s a Party”
S, M, L, XL, 1X/2X, 3X/4X

Silver novelty sequin dress with exquisite 1920's look neckline piece and sequin fringe bottom. Includes stretch silver sequin headpiece with white ostrich feather. (Jewelry, boa, satin gloves and cigarette holder not included) (2 piece set)



(Shown With)
Style 5218
“Luna Glove”
Black, White
O/S
Stretch satin opera
length gloves.



*This party girl kicked off her shoes,
danced all night and drank bathtub
booze.*



Style 9456

"What's Shakin'?"

S, M, L, XL

This jazzy doll loves to dance. You'll fall in love with her with just a glance.

Red sequin flapper dress has jewel encrusted neckline piece and black sequin fringe bottom. Includes red stretch sequin headpiece with black ostrich feather. (Jewelry, boa, satin gloves, pantyhose and cigarette holder not included) (2 piece set)

(Shown With)
Style 7034
"Fishnet Pantyhose"
Black
O/S
Fishnet pantyhose with back seam.

(Shown With)
Style 5218
"Luna Glove"
Black, White
O/S
Stretch satin opera length gloves.



Style 9455

“Dazzle Me”

S, M, L, XL

Unique silver gold and black sequin front flapper dress has a black paillette bottom with black sequin fringe along the hemline. Includes stretch sequin headpiece with black ostrich feather. (Jewelry, boa, satin gloves, pantyhose and cigarette holder not included) (2 piece set)

(Shown With)
Style 7034
“Fishnet Pantyhose”
Black
O/S
Fishnet pantyhose
with back seam.

(Shown With)
Style 5218
“Luna Glove”
Black, White
O/S
Stretch satin opera
length gloves.



*This Roaring Twenties dame dances,
drinks and has no shame.*





*I know a spot where the gin is
cold and the piano is hot...
And all that Jazz.*

Style 8832

"Jazzy Jezebell"

S, M, L, XL

20's inspired sequin dress with keyhole front detail, gold beaded neckline, cluny lace and sequin fringe hemline. Includes matching choker and stretch sequin headpiece with feather. (Boa, cigarette holder and pantyhose not included) (3 piece set)

(Shown With) Style 7034 "Fishnet Pantyhose" Black O/S
Style 5218 "Luna Glove" Black, White O/S



*Why does everyone have to
make such a fuss? They're just
jealous of dames like us!*



20's style dress with reversible black/red dangling paillettes and black beaded neckline. Stretch sequin headpiece with ostrich feather included. (Jewelry, boa, cigarette holder, gloves and pantyhose not included) (2 piece set)

(Shown With) Style 7034 "Fishnet Pantyhose" Black O/S
Style 5218 "Luna Glove" Black, White O/S

Style 8812

"Dames Like Us"

S, M, L, XL, 1X/2X, 3X/4X

Style 7474

“Ruby Red Hot”

S, M, L, XL

Stretch knit dress with tiered fringe and beaded neckline trim. Includes stretch sequin headband with rose detail, cigarette holder and removable/adjustable garter straps. (Gloves, boa, jewelry and thigh highs not included) (4 piece set)

(Shown With)
Style 5218
“Luna Glove”
Black, White
O/S



She shows off her pizzazz when she hears all that jazz.

Style 8401

“Ain’t Misbehavin’”

S, M, L, XL

Sequin 1920's inspired flapper dress with Art Deco styling has layered full fringe bottom. Includes stretch sequin headpiece with ostrich feather and cigarette holder. (Boa, pantyhose, gloves and jewelry not included) (3 piece set)

(Shown With)
Style 7034
“Fishnet Pantyhose”
Black
O/S

(Shown With)
Style 5218
“Luna Glove”
Black, White
O/S



She is the roaring 20's flapper with pizzazz, dancin' all night to Harlem Jazz.



Life was a party, and this she knew, shakin' on the dance floor and drinking bootleg gin too!

Style 8813 Silver sequin with black full fringe dress accented with a retro 1920's inspired beaded neckline. Stretch sequin headpiece with ostrich feather included. (Jewelry, boa, cigarette holder, gloves and pantyhose not included) (2 piece set)

S, M, L, XL

(Shown With) Style 7034 “Fishnet Pantyhose” Black O/S
Style 5218 “Luna Glove” Black, White O/S



Even though she's usually on the run, this gangster always manages to have her fun.



Black with white pinstripe vest has an attached red carnation and lattice back detail.

Includes matching pants, pinstripe hat and arm band with sequin dollar sign appliqué. (Necklace and money not included)
(4 piece set)



Style 9460

“Gang Style”

S, M, L, XL

Black and white
pinstripe corset styled
dress has underwire foam
cups, hook and eye front
detailing, and contrast
red ribbon lace up back.
Includes pinstripe hat,
and collar and tie with
dollar sign appliqué.
(Jewelry, thigh highs and
stocking bows not
included)
(3 piece set)

*If you double cross this beauty you’ll
have the blues, trying to get your feet
out of cement shoes.*





You might think this mobster boss is so much fun, until you're staring down the barrel of her gun.

Gangster pinstripe knit dress with sexy peak-a-boo scalloped lace neckline and matching shorts. Includes hat with feather, belt, carnation pin and choker. (Thigh highs and stocking toppers not included) (6 piece set)

Style 8188

"Mobster Boss"

S, M, L, XL



Blowing on his dice is sure nice!

Button front longer length pinstripe zoot suit with matching pants with side pocket and gold chain detail. Includes adjustable removable elastic suspenders, matching hat and necktie with \$ sign detail. (Shirt not included) (5 piece set)

Style 8105

"Zoot Suit Riot"

M, L, XL, XXL



If this sexy gangster is the one you choose, he might make you an offer you can't refuse.

Black and white pinstripe double breasted gangster suit. Includes a dickie, machine gun screen-printed necktie, carnation pin and hat. (Shirt not included) (6 piece set)

Style 8190

"Gangsta"

M, L, XL, XXL

workin', It

CABARET



Styles 7789 & 9565

Style 9565

"Burlesque Bombshell"

S, M, L, XL

Gold sequin corset styled dress has hook and eye front detail and attached ruffled burlesque skirt with fringe. Includes ostrich feather headpiece and choker. (Boa, satin gloves and pantyhose not included) (3 piece set)

(Shown With)
Style 7034
"Fishnet Pantyhose"
Black
O/S

(Shown With)
Style 5218
"Luna Glove"
Black, White
O/S





This sexy Cabaret Doll is entertaining for sure. She always has her audience screaming for more.

Style 8776

"Cabaret Doll"

S, M, L, XL

Halter style sequin front dress with fringe hemline. Sequin cabaret top hat, bow tie and removable/adjustable garters. (Thigh highs, gloves and cane not included) (4 piece set)

(Shown With) Style 5218 "Luna Glove"
Black, White O/S



She's here to entertain you, she's here to please, so come a little closer, it's you she wants to tease!

Fringed corset with sequin trim, hook & eye front closure and adjustable back. Includes sequin burlesque panty, ostrich feather barrette and long fringe burlesque skirt. (Jewelry, pantyhose and gloves not included) (4 piece set)



(Shown With) Style 7034 "Fishnet Pantyhose"
Black O/S

Style 8775

"Burlesque Beauty"

S, M, L, XL

*She does her thing
inside the ring!*



Style 8859

"Big Top Showstopper"

S, M, L, XL



Convertible bodysuit with lightly padded underwire cups, elaborate gold brocade fabric front panel and snap crotch. May be worn with or without separate stretch velvet jacket with epaulettes. Includes separate soft mesh tutu skirt, mini top hat with jewel and feather detail attached to a headband. (Bull whip not included) (5 piece set)

(Shown With) Style 7034 "Fishnet Pantyhose"
Black O/S

*This circus cutie's beauty will leave
you hanging in mid air....*



Satin and stretch knit dress with lightly padded underwire cups. Jagged edge top skirt over multi-layered tutu with jingle bell details. Includes matching mini top hat on a headband, and tutu choker. (Thigh highs not included) (3 piece set)

(Shown With) Style 9264 "Harlequin Thigh High"
O/S

Style 8802

"Cirque Du Sexy"

S, M, L, XL

Style 9417

“Keep It Clean”

S, M, L, XL

Black stretch velvet
vintage styled dress with
ivory and gold
embroidered detailing.
Includes embroidered
apron, headpiece and
choker.
(Feather duster
not included)
(4 piece set)

*The only thing she has left to clean is
your dirty mind.*





You wouldn't be upset if your house was a mess, if your maid looked like this in a dress.

Style 8211

"Maid to Order"

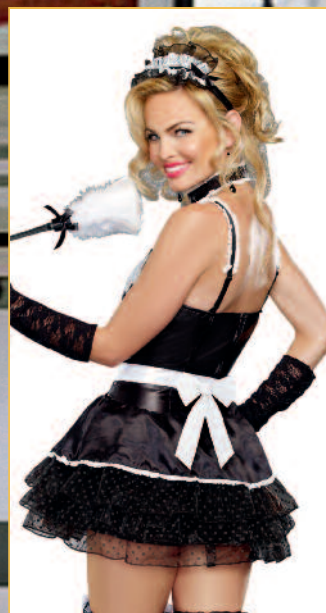
S, M, L, XL, 1X/2X, 3X/4X

Ruffled pinafore apron with vintage Parisian print of polka dots and attached to black knit dress with sheer sleeves and large back bow. Includes removable/adjustable garters with bows, headpiece and feather duster. (Thigh highs not included) (3 piece set)

(Shown With) Style 7031 "Sheer Thigh High"
Black, Red, White O/S



She's always ready, when things get dirty.



Black underwire foam cup dress with attached polka dot petticoat and white lace detailing. Includes headpiece, choker, and apron. (Feather duster, thigh highs and stocking bows not included) (4 piece set)

Style 9416

"Bonjour Bonjour"

S, M, L, XL

Style 9420

"Flight Risk"

S, M, L, XL

Black zip front romper with patches and contrast detailing. Includes pilot's hat, novelty belt, and two-way zip front skirt with screen prints. (Sunglasses and fingerless gloves not included) (4 piece set)



She's the dame with the perfect aim!

Convertible



Style 3523

"Mile High Captain"
S, M, L, XL

Microfiber dress with attached neck sash. Includes matching pilot hat and removable "Mile High Captain" badge. (3 piece set)



The skies sure are friendly with this pilot hottie.

Style 8773

"Air Candy"
S, M, L, XL

Knit dress with airline patches and gold trim. Includes gold lamé neck scarf, "Miss Dee Licious" name plate, matching hat and gloves. (5 piece set)



It looks like the friendly skies just got a little friendlier!

Style 5236

"Mile High Pilot Hugh Jorgan"
M, L, XL, XXL

Button front jacket with satin and gold trim details. Includes pilot hat, collar with necktie and removable "Mile High Pilot Hugh Jorgan" name badge. (Pants not included) (4 piece set)



As a proud member of the Mile High Club, this pilot makes sure his passengers always come first.

Style 8192

Mile High Pilot
"Sheila B. Bangin' "
S, M, L, XL

Button front long sleeved pilot's dress with gold braid detail. Includes pilot hat and removable "Mile High Pilot" badge. (3 piece set)



This naughty pilot always thinks it's sweet, to get down and dirty at 20,000 feet.

My

Heroes



Style 9410

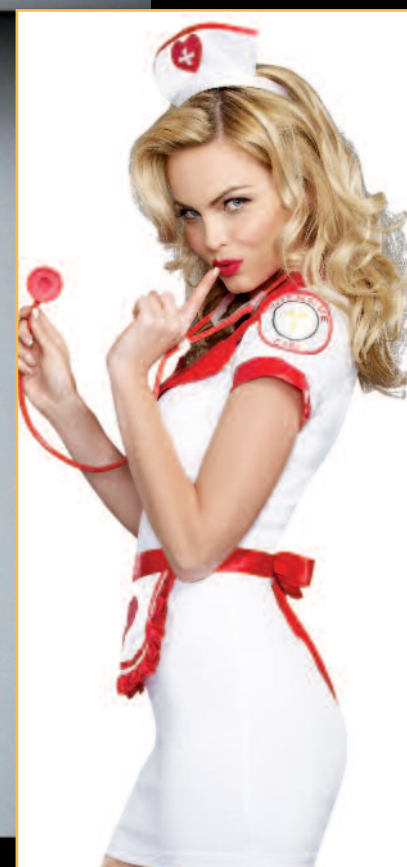
Style 9410

"Nurse Jess Bendover"

S, M, L, XL

Her patients never stopped coming throughout the day, they knew this sexy nurse would make their aches and pains go away.

Body shaping bengaline nurse dress includes apron, headpiece, novelty stethoscope and "Nurse Jess Bendover" name plate.
(Thigh highs and stocking clips not included)
(5 piece Set)



Style 9504

“Hospital Hottie”

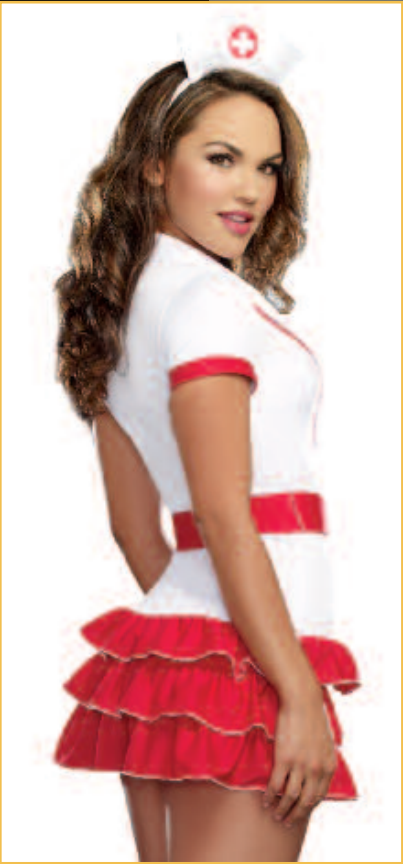
S, M, L, XL, 1X/2X, 3X/4X

Nurse uniform has red ruffle detail and medical cross screen prints. Includes nurse hat, belt, and stocking topper bow pins. (Thigh highs and stocking clips not included) (4 piece set)

Nurses take temperatures and this one's no exception. Just look at her once, and you'll wish you had an infection.



(Shown With)
Style 7031
“Sheer Thigh High”
Black, Red, White
O/S



This is your lucky day, Dr. Bud Smoker is going to make your problems go away.



Style 9411

"Dr. Bud Smoker"

M, L, XL, XXL

Men's lab coat with front and back screen print. Dr. Bud Smoker name plate included. (Pants not included) (2 piece set)

(Shown With) Style 6379 "Men's Basic Pant"
Black, Red, White O/S

Once she takes a look at your case, this helpful nurse can put a smile on your face.



Style 9435

"Nurse Anita Reefer"

S, M, L, XL

White nurse's uniform with green accents and cross screen prints. Includes nurse's hat, Nurse Anita Reefer name plate, and stocking topper bow pins. (4 piece set)

Style 8873

“Dr. Oliver Clothesoff”
M, L, XL, XXL

White lab coat with front and back screenprints. Includes “Trust Me I’m a Doctor” pin, stethoscope and “Dr. Oliver Clothesoff” name plate.
(Pants not included)
(4 piece set)

(Shown With)
Style 6379
“Men’s Basic Pant”
Black, White
M, L, XL, XXL

Trust me, I’m a doctor.



Style 8100

“Nurse Knockout”
S, M, L, XL

Retro styled stretch Bengaline dress with lightly padded underwire cups and peplum detail. Includes separate jacket with faux vinyl piping and cross detail, stethoscope, belt and nurse hat. Includes removable/adjustable shoulder straps and “Nurse Knockout” name badge. (Thigh highs not included)
(6 piece set)

Your heart will skip a beat for this knockout nurse treat.



This naughty nurse wants to take care of you. Some tender loving care, always seems to do.



Style 8780
“Nurse Anita B. Naughty”
S, M, L, XL



Convertible nurse costume with removable zip front top, red bra top, pleated skirt, garters, nurse’s cap and stethoscope. (Thigh highs not included) (6 piece set)

Convertible

Convertible



*One look at this sexy fire fighter
and you'll be filled with desire.
You might even be tempted to
start your own fire.*

Style 9445

"Where's the Fire"

S, M, L, XL

Long sleeve red stretch
knit romper has Fire
Department patches
and zip front detailing.
Includes matching skirt,
fire fighter hat and belt.
(Boot toppers not
included)
(4 piece set)

(Shown With)
Style 9612
"Reversible
Boot Toppers"
Red/Black
O/S





Every man would desire to have this burnin' hot fire chief put out their fire.

Style 9446

"Burning Hot"

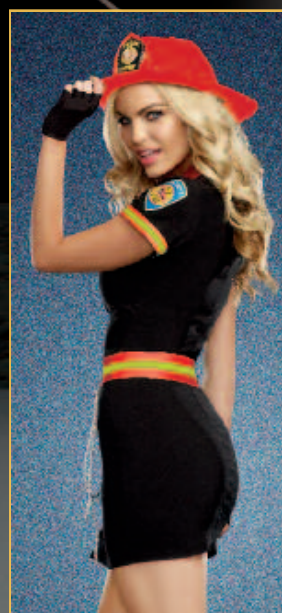
S, M, L, XL, 1X/2X, 3X/4X

Sexy suspender style red dress has Fire Department patches and front zippers that can be unzipped to make side slits. Includes reflective tape garter with rope, belt and fire fighter hat. (Boot toppers not included) (5 piece set)

(Shown With) Style 9612
"Reversible Boot Toppers" Red/Black
O/S



This sexy fire fighter's only desire is to find a nice long hose to put out her fire.



Body shaping bengaline dress with fire patches, red fire hat, belt and rope. (Boot toppers not included) (4 piece set)

(Shown With) Style 9612
"Reversible Boot Toppers" Red/Black
O/S

Style 9436

"Playing With Fire"

S, M, L, XL



She's the fire fighter that all men desire. Give her a chance and she'll light your fire.



Convertible dress with "Smokin'" screen print on back. May be worn as a dress or tied-up around the waist to reveal the flame screen printed shorts. Includes fireman hat with "Smokin' Hot Fire Dept." sticker and red belt. (4 piece set)

Style 8882

"Rescue Me"

S, M, L, XL



This smokin' hot fire fighter loves when things heat up.



This smokin' hot fireman always comes equipped with his long hose ready.

Style 6524

"Smokin' Hot Fire Fighter"

S, M, L, XL,

Black gloss microfiber two-way zip front dress with reflective tape trim detail and "Smokin'" knit bra top. Includes reflective tape belt, fire hat and matching boot toppers. (5 piece set)

Style 6550

"Smokin' Hot Fireman"

M, L, XL, XXL

Buckle front jacket with reflective tape trim detail. Includes knit tank top with "Fire Department" heat transfer and fireman hat. (Pants not included) (3 piece set)

(Shown with)
Style 6379
"Men's Basic Pant"
Black, White
M, L, XL, XXL

This elite agent loves finding hardened criminals.



Style 9443
“Special Ops” (Female)
S, M, L, XL
Sleek and sexy black jumpsuit with buckle front detailing and Special Operations patch. Includes bullet belt. (2 piece set)

This Special Ops cop loves to play rough.



Black heavy duty vest has bullet holders, utility pockets, SWAT Police back screen print and special SWAT patch. Includes dickey with face mask and arm band with embroidered Special Ops patch. (Pants, handcuffs, baton, helmet and sunglasses not included.) (3 piece set)

(Shown with) Style 6379
“Men’s Basic Pant” Black, White
M, L, XL, XXL

Style 9444
“Special Ops”
M, L, XL, XXL



Sergeant Dick Spectacular was his name. Once he handcuffed you, you were never quite the same.



This sexy cop has such glam, wherever she goes she creates a traffic jam.



Style 9438

“Sgt. Dick Spectacular”
M, L, XL, XXL

Black cotton long sleeve work shirt with police patches on both shoulders and the chest. Includes police hat with badge, police badge pin, and Sergeant Dick Spectacular nameplate. (Belt, baton, walkie-talkie, sunglasses and handcuffs not included) (4 piece set)

Style 9441

“Traffic Stopping Cop”
S, M, L, XL

Zip front black knit dress has pink vinyl trim and police patches. Includes Officer Anita Bigone nameplate, pink shiny vinyl police hat with badge, pink vinyl belt, police badge pin and handcuffs. (Fingerless gloves and baton not included) (6 piece set)

(Shown With) Style 7034 “Fishnet Pantyhose”
Black O/S

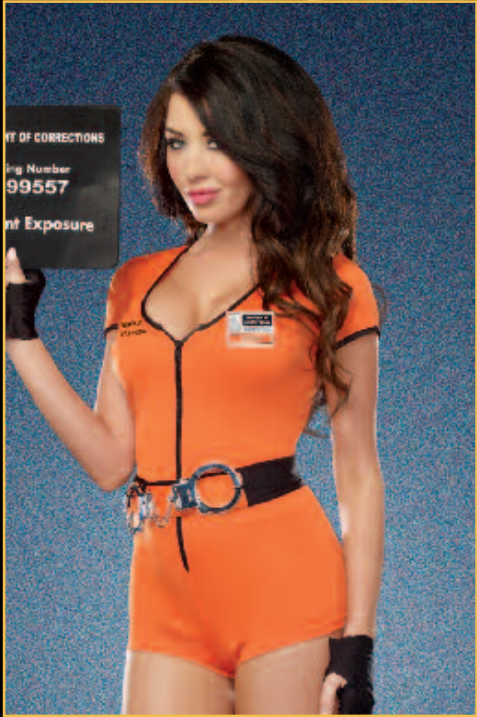
Style 9505

“Locked Up!”

S, M, L, XL

*This sexy prisoner loves doing time
and anything else that comes her way.*

Sexy stretch knit, zip front
romper has “Department
of Corrections” screen-
print. Includes belt with
removable handcuffs,
prison ID pin, booking
card, and two-way zip skirt
with “Guilty” screen print
on the back.
(Fingerless gloves
not included)
(5 piece set)



Convertible

Even though they were going to be in a jail cell down town, no one ever minded her patting them down.



Navy romper with police patches and two-way zip front skirt. Includes belt, police hat with badge, and "Officer Sheila B. Naughty" name plate. (Sunglasses, handcuffs and baton not included) (5 piece set)

Style 8866
"Officer Sheila B. Naughty"
S, M, L, XL



Style 5150
"You're Busted! Policeman"
M, L, XL, XXL

Button front shirt with badge. Includes hat, removable "Officer Oliver Clothesoff" name badge, belt, handcuffs and baton. (Sunglasses and pants not included) (6 piece set)

(Shown with)
Style 6379
"Men's Basic Pant"
Black, White
M, L, XL, XXL



With her on patrol, you can expect many late night altercations.

Style 7669
"Late Night Patrol"
S, M, L, XL

Ruffle hem dress, waist cincher with belt and removable "Dreamgirl Police Dept." badge. Includes hat, lace-up wrist cuffs and matching drawstring bag. (6 piece set)

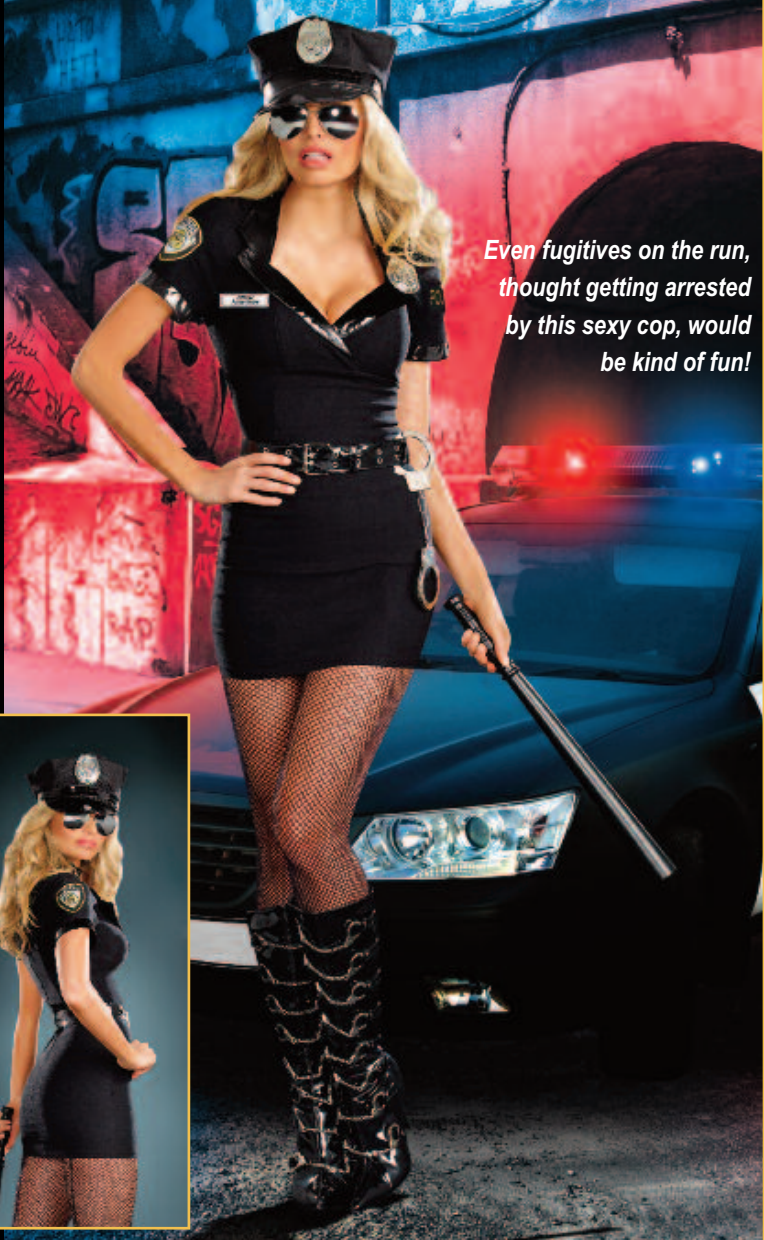


Style 8816
“Dirty Cop Officer Anita Bribe”
S, M, L, XL, 1X/2X, 3X/4X

Black bengaline stretch knit dress with belt and police patches on shoulders. Costume includes police hat with badge pin, “Officer Anita Bribe” name plate and removable police badge. (Sunglasses, handcuffs, pantyhose and baton not included) (5 piece set)



(Shown With)
Style 7034
“Fishnet Pantyhose”
Black
O/S



Even fugitives on the run, thought getting arrested by this sexy cop, would be kind of fun!

Corruption was his middle name. Banging heads was his game.



Style 8817
“Dirty Cop Officer Ed Banger”
M, L, XL, XXL

Black sleeveless collared shirt with front pockets, police patch and removable neck tie. Includes police hat with badge pin, “Officer Ed Banger” name plate, removable police badge and arm band. (Sunglasses, handcuffs, baton and pants not included) (6 piece set)

Style 8881
“Get a Clue”
S, M, L, XL

Black police dress with shiny vinyl waist detail and belt. Dress has police patches and large hand screen prints on back. Bra top has “Police Line Do Not Cross” screen print. Includes belt and police hat. (Sunglasses, handcuffs and pantyhose are not included) (4 piece set)

(Shown With)
Style 7034
“Fishnet Pantyhose”
Black
O/S



Style 4005
“Corrupt Cop”
S, M, L, 1X/2X, 3X/4X

Snap front dress with attached vinyl boned waist corset and neck collar. Includes hat, faux razor blade necklace, removable name badge, belt, handcuffs and an evidence bag which contains a faux needle and mini plastic bag. (Sunglasses and cash not included) (9 piece set)





mythical Magic

Style 9442

Style 9442

“Medusa”

S, M, L, XL

Sexy green metallic knit gown has a unique high-low hemline, gold sequin snake appliqués crossing the plunging neckline meeting at the open center, and attached gold mesh sashes with gold sequin snake appliqués. Waistband is pleated with sequin detailing. Includes moldable snake headpiece and gold lamé armbands. (Earrings not included) (3 piece set)

This exquisite beauty is filled with wit, but get to close to her head, and you might get bit.





Venturing beyond middle earth for an elf can be risky, but his desire for earthly women leaves him ever so frisky.



This elegant beauty is all ears.

Style 9498

"Medieval Elf"

M, L, XL, XXL

Red men's tunic has attached belt with authentic Celtic design. Includes wrist gauntlets, latex elf ears, and hooded cape. (Sword, pants and boot toppers not included) (4 piece set)

(Shown with) Style 6379
"Men's Basic Pant" Black, White
M, L, XL, XXL

Gold foil printed white stretch knit dress with gold sequined neckline appliqué, attached golden sheer hood, open floor length sleeves and skirt that opens from the front and back. Includes latex elf ears and adjustable golden medieval headpiece. (Jewelry not included) (3 piece set)

Style 9450

"Elf Princess"

S, M, L, XL

Style 9449

“Angel Baby”

S, M, L, XL

Silver stretch lame underwire foam cup dress with sequin trim and attached white with silver sparkle skirt. Includes marabou feather halo headband and white feather angel wings. (Earrings not included) (3 piece set)

Life can be heavenly, and that is true, with an angel like this watching over you.



Style 9448

"Dark Angel"

S, M, L, XL

"Good girls go to heaven, and bad girls go everywhere!"

Black stretch knit dress with plunging neckline and pentagram belt. Includes marabou feather black halo headband, fingerless gloves, choker, and feather wings that go from black to red. (5 piece set)



Style 9566

“Rainbow Fairy”

S, M, L, XL

*When this fairy comes to you,
psychedelic dreams and wishes will
come true.*

Psychedelic fairy dress
has neon pink and green
sequin fabric with multi
colored attached sparkly
tutu. Includes fairy wings
and removable/adjustable
shoulder straps.
(Wand, wig, fingerless
gloves, jewelry, thigh
highs and boot covers not
included)
(2 piece set)

(Shown With)
Style 8898
“Light-up Pixie Wig”
Green, Pink, Silver
O/S

(Shown With)
Style 8978
“Neon Fishnet
Thigh Highs”
Neon Pink
O/S

(Shown With)
Style 9192
“Rainbow Boot Cover”
Multi
O/S



Style 8208

"Golden Goddess"
S, M, L, XL

Golden sequin paillette fringed gown with side slits and attached back chiffon scarf. Dress has a 32" nude lining. Includes metallic gold armbands and a cascading rhinestone headpiece. (3 piece set)



Dripping in diamonds and gold too, no man could resist her, this they knew.



This ethereal beauty seems to have dropped from above, she is Aphrodite, the goddess of love!



Convertible

Style 8861

"Goddess of Love, Aphrodite"
S, M, L, XL, 1X/2X, 3X/4X

Goddess dress with gold sequined embroidery and trim. The strategically placed zipper across skirt hemline allows the dress to go from ankle length to short and sexy. Once unzipped, the bottom of the dress can be worn as a cape. Rhinestone headpiece and gold armbands included. (4 piece set)



Style 8835

"Warrior Elf"
S, M, L, XL

Stretch knit and chiffon peasant style dress with lace-up corset detailing at waist and pelted skirt hemline with metallic gold piping. Includes matching sleeves and headband with elf ears. (Sword not included) (3 piece set)



Hiding amongst the trees is her game, but slaying dragons is her claim to fame!



Every inch of this mighty God is simply heavenly!

Style 8860

"He's a God!"
M, L, XL, XXL

White tunic with gold satin attached cape and matching trim. Gold leaf headpiece, removable belt and wrist gauntlets included. (4 piece set)

Haunts

Hot

Style 9423





You might think this beauty is quite a sight, until you try to kiss her, and she gives you a bite.

Style 9422

"Killing Me Softly"

S, M, L, XL, 1X/2X, 3X/4X

Black and red velvet Victorian styled dress with high-low hemline has an exquisite sequined, embroidered neckline piece, vampire collar and sheer black chiffon sleeves. (Jewelry and pantyhose not included) (1 piece set)

(Shown With) Style 7034 "Fishnet Pantyhose"
Black O/S



He was a bloody fun guy with great taste in women.

Satin vest with attached dickey has detachable cape with a vampire collar. Includes collapsible hat. (Shirt and pants not included) (3 piece set)

(Shown with) Style 6379
"Men's Basic Pant" Black, White
M, L, XL, XXL

Style 9502

"Dracula"

M, L, XL, XXL

Style 9423

"Dead to the World"

S, M, L, XL

*Warming up to her might take a while,
when she hits you with her killer smile.*

Black strapless dress with textured black foil print, center with metal studded neckline trim and embroidered gothic cross appliqué. Includes full length red satin vampire cape with hooks and adjustable straps, and black satin ribbon choker. (Satin gloves not included) (3 piece set)

(Shown With)
Style 5218
"Luna Glove"
Black, White
O/S

Style 8176

“Just One Bite”

S, M, L, XL

Velvet vampire dress with stretch lace and flocked satin with gothic crosses on lightly padded underwire cups and stand-up collar. Back features lace-up detail to accentuate curves. (Jewelry not included) (1 piece set)



This vamp wants to have some fun tonight, all she's asking for is just one bite!!

This sexy vampire can be such a fright, when he pulls you close and takes a bite!



Style 8177

“Just One Bite”

M, L, XL, XXL

Black velvet vampire waistcoat with contrast satin lapels and cuffs. Front lapels have gothic embroidered satin appliqué crosses with rhinestones. Coat back has embroidered fiber optic light-up cross. Includes a white satin ruffle dickie, instructions, hidden pocket for on/off switch and batteries. (Shirt and pants not included) (2 piece set)



(Shown with)
Style 6379
“Men’s Basic Pant”
Black, White
M, L, XL, XXL

Style 8765

“Dead Sexy”

M, L, XL, XXL

Black velvet gothic vampire shirt with ruffled detailing, red vampire collar and large cross appliqué on the back of shirt. (Pants not included) (1 piece set)

(Shown with)
Style 6379
“Men’s Basic Pant”
Black, White
M, L, XL, XXL



This naughty Vampire comes to women in their dreams, he sucks their necks and makes them scream!

This exquisite beauty is a tempting delight, but get to close and she might take a bite!



Style 8778

“Dead Sexy”

S, M, L, XL

Black dress with attached red waist corset, tiered satin skirt and collared cape. Lace choker with vampire bite detail and lace gloves included. (Earrings not included) (3 piece set)

Please don't get in her way, or you can
be sure there will be hell to pay!

Red sequin dress with
flame shaped neckline
and zipper hidden
along the hemline that
allows the bottom of
the dress to be zipped
off for a shorter look.
The sheer sparkly flame
bottom can be worn as
a cape. Includes sequin
devil horns and
removable tail with
sequin heart.
(Devil's pitchfork not
included)
(3 piece set)



Convertible

Style 9429
"The Bad Witch"
S, M, L, XL, 1X/2X, 3X/4X

Black velvet dress with large hook and eye front trim, corset styling and a full spider lace skirt with attached petticoat. Includes spider lace gauntlet gloves, and spider lace hat with buckle.
(Necklace and thigh highs not included)
(3 piece set)



*This naughty witch is never alone,
even though she's bad to the bone.*





*She's quite tempting - that is true -
until she puts a spell on you!*

Style 9427

"Voo Doo Priestess"

S, M, L, XL

Black ultra suede dress with underwire foam cups and high-low hemline has skull and animal print detailing. Includes feather headpiece, bone necklace and arm wraps. (4 piece set)

Style 9461

"Sorcery & Seduction"

S, M, L, XL, 1X/2X, 3X/4X

Purple velvet dress with silver star and moon print, silver sequin trim detailing, silver lamé hood, and a high-low hemline. Includes waist sash with tassels. (Magic wand not included)
(2 piece Set)



If you're going to make this sorcerer mad, you better think twice, she'll turn you into something that's not very nice!



Style 9428

"Wicked Me"

S, M, L, XL

*For a night of forbidden ecstasy,
come along with wicked me.*

Black dress with
patterned sequin
bodice, open front
tattered overskirt, sheer
gauntlet sleeves with
black claw-like shoulder
extensions and witch's
hat. (Necklace and
pantyhose not included)
(2 piece set)

(Shown With)
Style 7034
"Fishnet Pantyhose"
Black
O/S



Style 8810

“Black Magic”

S, M, L, XL

Black velvet sequin dress with cutout neckline and gauntlet sleeves. Matching velvet witch hat with sequin and organza brim included. (Jewelry and pantyhose not included) (2 piece set)



You might think this dazzling beauty is swell, until she whips up a potion and puts you under her spell.

This sexy creature might get awfully chummy, but get too close and you'll be crying for your mummy!



Style 8340

“Dancing Skeleton Diva”

XS, S, M, L

Stretch knit zip back pantsuit with innovative sound activated light-up pulsing heart and skeleton screen-printed details. Requires 2 AAA batteries. Includes matching dancing skeleton top hat and instruction sheet. (Batteries and cane not included) (2 piece set)



Make no bones about it! This sexy skeleton will make your heart beat faster.

Light up costume

Style 8820

“Mummy Dearest”

S, M, L, XL

White tattered dress with sexy plunging neckline. Headpiece and bandage sleeves included. (3 piece set)

once upon a time



Style 9477

The fairytale does tell, if your grandma suddenly has a deep voice, and big eyes and mouth, you may want to run like hell.



Style 9477

“Little Red”
S, M, L, XL, 1X/2X, 3X/4X

Beautifully detailed fairytale dress includes underwire foam cups with pleated ruffles, embroidered heart trim, and lace-trimmed apron. Includes full length hooded satin cape. (Basket, thigh highs and satin gloves not included) (2 piece Set)

(Shown With) Style 5218 “Luna Glove”
Black, White O/S



Who’s afraid of the Big Bad Wolf?



Men's red and black check jagged edge tunic with faux fur hood with wolf ears. Includes fingerless gloves.
(2 piece Set)

Style 9493

“Big Bad Wolf”
M, L, XL, XXL



Hi ho, hi ho, I wish my prince would show!

Style 9478

"Feisty in the Forest"

S, M, L, XL

Fairytale dress with blue sequin bodice and yellow attached satin skirt. Includes sequin trimmed sleeves, adjustable/removable garters and headband with sequin bow. (Thigh highs and stocking clips not included) (2 piece set)

(Shown With)
Style 7031
"Sheer Thigh High"
Black, Red, White
O/S



Style 9476
"Beyond Wonderland"
S, M, L, XL

Blue satin dress with attached apron with large bow in the back, ric rac trim, sequin appliques and jeweled heart buttons. Includes headband with bow and fingerless gloves. (Thigh highs not included)
(3 piece set)

*Come join Alice on a little trip,
through the rabbit hole she might just slip.*





She's always late for an important date, but totally worth the wait!

Style 9173

"Lost In Wonderland White Rabbit"

S, M, L, XL

Stretch knit dress with sweetheart neckline with checkered print edging, front panel with sequin heart appliques and multi layer tutu skirt with attached bunny tail. Includes matching tulle choker, faux fur boot covers, removable/adjustable shoulder straps and top hat with attached faux fur bunny ears. (Wig, thigh highs and faux fur cuffs not included) (5 piece set)



Many have fled, when this evil queen screamed, "Off with their heads!"



Black velvet dress with elaborate red and silver sequin heart design on front bodice. Double layer red satin and black velvet skirt with silver sequin trim. Heart shaped collar is embellished with heart shaped sequins, removable/adjustable shoulder straps and heart choker. Rhinestone crown comb and sleeves included. (Scepter, gloves and thigh highs not included) (5 piece set)

(Shown With) Style 7031 "Sheer Thigh High" Black, Red, White O/S
Style 5218 "Luna Glove" Black, White O/S

Style 8781

"Queen of Hearts"

S, M, L, XL



Every princess knows they must be pretty and clever, or finding a prince might just take forever!



Style 9473
"Having a Ball"
S, M, L, XL

Blue satin dress with jeweled neckline trim, high-low hemline, sheer puff sleeves and sparkly print skirt. Includes crown. (Jewelry, satin gloves and thigh highs not included) (2 piece set)

(Shown With) Style 7030 "Sheer Thigh High"
Black, White
O/S, O/S Queen



Finding a princess can be hard to do, not every fair maiden can fit in that glass shoe!



Tunic with gold embroidered royal crest, gold fringed epaulets and matching belt. Includes elastic waist pants with gold trim. (3 piece Set)

Style 9474
"Prince Charming"
M, L, XL, XXL

Style 9475

"Queen of Darkness"

S, M, L, 1X/2X, 3X/4X

*This evil queen gets such delight in
being mean night after night.*

Black shiny stretch knit high-low hemline dress with sequin detailing has a dramatic attached jagged collar and removable/adjustable garters. Includes headpiece. (Scepter, fingerless gloves and thigh highs not included) (2 piece Set)

(Shown With)
Style 9517
"Fingerless Gloves"
Black
O/S



Style 9490

“Genie in a Bottle”

S, M, L, XL

Turquoise genie top has gold foil moon & star print, sequin trim and a chiffon midriff. Genie pants have side slits, gold sequin waist appliqué, gold moon & star print panel, and attached shorts. Includes sequin-trimmed sleeves and a jeweled headpiece with veil. (4 piece set)

This Genie in a bottle wants to make your wishes come true, so close your eyes and watch what she can do!



Style 9452

"Fairy-licious"

S, M, L, XL

*She's the beautiful fairy that's just delicious.
She goes by the name of Fairy-licious.*

Holographic print stretch knit dress has corset-styled bodice, green rhinestone encrusted neckline appliqué and attached sparkly tutu bottom. Includes wand and fairy wings. (Jewelry not included) (3 piece set)



Style 7537

“Pretty Pan”

S, M, L, XL

Stretch satin dress with plunging neckline and jagged edge adjustable length drawstring hemline. Includes belt, sword and matching hat. (4 piece set)



She'll fly through the sky just to catch your eye!

Style 7497

“Big Bad Sexy Wolf”

S, M, L, XL, 1X/2X, 3X/4X

Zipper front stretch crushed velvet dress with faux fur trimmed hood with pom pom ties, attached ears and tail. Includes faux fur trimmed boot covers. (2 piece set)



She'll let out a howl when she's on the prowl.

When the wolf is howling at the moon she'll make you swoon...



Style 8946

“Naughty Little Red”

S, M, L, XL



Off-the-shoulder satin and stretch knit dress with damask fabric peplum and adjustable lace-up front detail. Includes satin hooded capelet and glitter rosette stocking clips. (Thigh highs and petticoat not included) (3 piece set)

(Shown with) Style 7031 Black, Red, White O/S
Style 8964 “Fairytale Petticoat” Black, White O/S

Multi layered mesh petticoat with satin ribbon high-low hem and back bow.

She's always on the hunt for the big cheese....



Style 8791

"Miss Mouse"

S, M, L, XL, 1X/2X, 3X/4X

Retro polka dot dress with lightly padded underwire cups and multi ruffled hemline. Includes polka dot bow belt, mouse tail, choker, polkadot thigh high stockings, headband with matching bow and light-up mouse ears. Batteries and instructions included. (6 piece set)



Only true love's sweet kiss, could wake her from a sleepy bliss.



Style 8805

"Sleeping Princess"

S, M, L, XL

Stretch velvet and satin long sleeve, off-the-shoulder dress with rose bud accented back bustle and high-low hemline. Includes matching princess crown on a headband. (2 piece set)

(Suggested accessory) Style 8964 "Fairytale Petticoat"
Black, White O/S





Instincts

Animal

Style 9486



This adorable penguin loves to have fun, lounging on a snow bank having a cold one.

Style 9486

“Just Chillin’”

S, M, L, XL, 1X/2X, 3X/4X

Zip-front velvet dress with attached penguin face hood and figure-flattering color block bodice has faux fur trimmed hood, sleeves and hem. Includes belt, mittens and boot covers. (4 piece set)



(Suggested Accessory)
Style 4582
“Ursula Petticoat”
Black, White
O/S



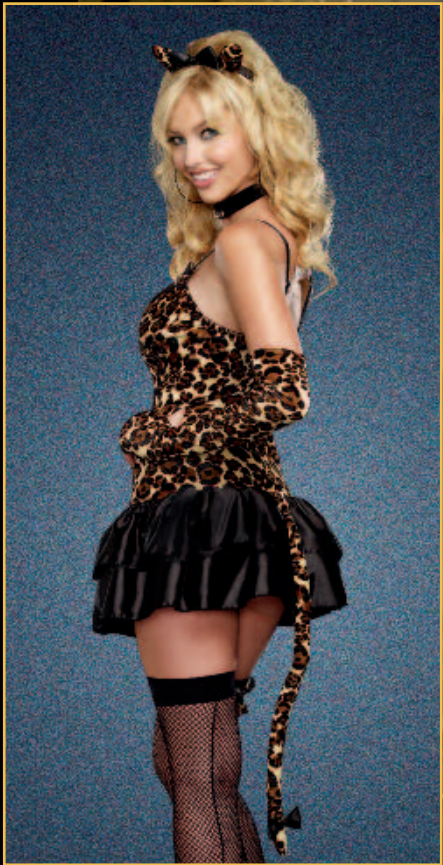
Style 9485

“Purr-fect for You”

S, M, L, XL

Leopard print stretch velvet corset-styled dress has underwire foam cups, front lace-up detail and satin ruffled bottom. Includes matching cat ear headpiece, garter, fingerless gloves, removable tail and choker with cat bells. (6 piece set)

(Suggested Accessory)
Style 4578
“Angel Petticoat”
Black, Red, White
O/S



This purr-fect kitty loves to play, out late out night she'll often stray.





This naughty kitty loves to growl, late at night when she's out on the prowl.



Style 8760

Leopard print stretch crush velvet hooded dress with fur trim and removable tail. Includes boot covers. (2 piece set)

"Cheetah-luscious"

S, M, L, XL, 1X/2X, 3X/4X



She wants to hang out in the bamboo with you!



Style 8793

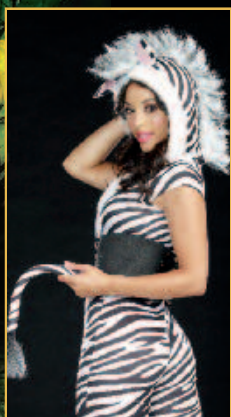
"Panda Bear Baby"

S, M, L, XL, 1X/2X, 3X/4X

Zipper front stretch velvet dress with faux fur trimmed hood, panda bear face and pom pom ties. Includes matching paw print mittens, faux fur trimmed boot covers and attached tail. (3 piece set)



Watch this zebra prance and you'll get your chance.. . .



Style 8147

"Zebralicious"

XS, S, M, L

Punk inspired zip-front stretch knit zebra print pantsuit has faux fur trimmed hood with ears and Mohawk wig hair mane. Includes flattering waist cinching corset with boning and back stud detail with matching removable tail. (3 piece set)



Style 8170

“Monarch Fairy”
XS, S, M, L

Custom designed monarch butterfly print satin dress with adjustable halter neckline, sexy sheer stretch mesh side and back cut-outs and slit butterfly wing like hemline. Includes next generation LED light up monarch butterfly wings and matching antennae. Batteries and instructions included. (Petticoat and pantyhose not included) (3 piece set)



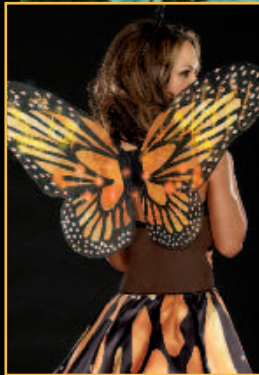
(Shown With)
Style 4582
“Ursula Petticoat”
Black, White O/S

Style 7034
“Fishnet Pantyhose”
Black O/S



Watch out for this butterfly, she'll break your heart and make you cry!

Light up costume



Style 8341

“Night Prowler”
S, M, L, XL

Stretch microfiber long sleeve zipper front cat suit with laser cut accents, faux vinyl belt with tail and pocket for innovative sound device which makes a “Meow” sound when squeezed. Includes neckband and mask with ears. Batteries and instructions included. (Whip not included) (6 piece set)



Sound & motion



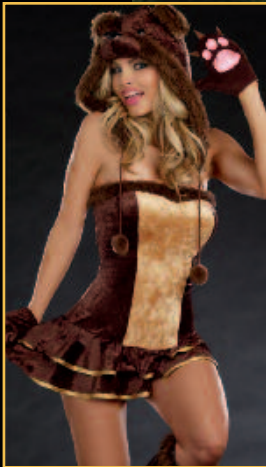
Style 8783

“Bear Hugs”
S, M, L, XL, 1X/2X, 3X/4X

Stretch velvet dress with double ruffle hemline, faux fur neckline detail and bear tail. Includes separate hooded jacket with teddy bear face, mittens with paw print, removable/adjustable shoulder straps and matching faux fur boot covers. (5 piece set)



She lets out a growl when she's on the prowl.



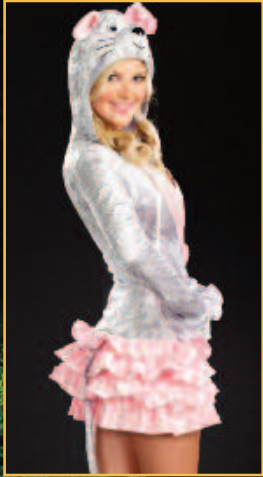
Don't you wish you had a mouse that looked like this in your house?



Style 8764

“Cutie Patooty”
S, M, L, XL

Gray and baby pink hooded stretch crush velvet dress with attached tail and boot covers. (2 piece set)





Sirens

seaworthy

Style 9433

This Pirate cutie always gets a lot of booty.



Style 9433
(Female Costume)
"Rock the Ship"
Black velvet dress with underwire foam cups, unique metallic gold printed rope design and sequin patch. Includes matching shrug, pirate's hat, and waist sash. (Sword, jewelry and pantyhose not included) (4 Piece Set)

S, M, L, XL
(Shown With) Style 7034 "Fishnet Pantyhose" Black O/S



Don't come a knockin', when his ships a rockin'!



Style 9434
(Male Costume)
"Rock the Ship"
Black velvet pirate's coat with a unique metallic gold printed rope design on the lapels, collar and cuffs. Includes head scarf with gold skull appliqué, white satin ruffled dickey, and metallic gold and black striped waist sash. (Pants and sword not included) (4 piece set)

(Shown With) Style 6379 "Men's Basic Pant" Black, White
M, L, XL, XXL



Style 9432

"Hidden Treasure Pirate"

S, M, L, XL

*This sexy pirate wants to show you
where her treasure is hidden.*

Black velvet underwire
foam cup dress with red
sequin and
skull & crossbones
design. Includes velvet
waist wrap with jagged
edge bottom, head scarf
with sequin skull &
cross bone design, and
sheer black chiffon
sleeves.
(Sword, jewelry and
boot toppers
not included)
(4 piece Set)



Open her treasure chest and you will know why she's best!



Style 8795
"Surrender the Booty"
S, M, L, XL

Velvet dress with lightly padded underwire cups, high-low hemline bustle skirt and attached gold coin belt. Includes separate long sleeve jacket with French cuffs and pirate hat. (Sword not included) (3 piece set)

Her precious booty was a pirate's delight, on her ship late at night.



Black off-the-shoulder peasant dress with sheer sleeves, ruffled satin skirt and red bodice with black lace overlay. Includes pirate hat and belt with skull buckle. (Jewelry, sword and pantyhose not included) (3 piece set)



(Shown With) Style 7034 "Fishnet Pantyhose" Black O/S

Style 8757
"Precious Booty"
S, M, L, XL

In love with this pirate, the wenches did fall, after he made his booty call.



Style 8774

"Looking for Booty"
M, L, XL, XXL

Black pirate top with heat transfer metal stud skull. Black faux leather vest, red waist sash and headpiece included. (Pants and sword not included) (4 piece set)

(Shown with) Style 6379 "Men's Basic Pant"
Black, White M, L, XL, XXL



Many a pirate did she pleasure, when she shared her buried treasure.



Style 8867

"Treasure Pleasure"
S, M, L, XL,
1X/2X, 3X/4X

Pirate dress with attached black velvet scroll printed vest, red lace peasant style top with layered bell sleeves and attached high-low hemline petticoat. Pirate hat included. (Jewelry, sword and pantyhose not included) (2 piece set)

(Shown With) Style 7034 "Fishnet Pantyhose" Black O/S



Style 9480

"Ships Ahoy"

S, M, L, XL, 1X/2X, 3X/4X

Navy stretch knit pin-up styled dress with anchor print center, striped ruffled hem, layered ruffle back with bow detail and sweetheart neckline. Includes shrug with sailor collar, removable/adjustable garters and sailor hat with sequin anchor appliqué (3 piece set)



Whatever floats your boat!



This adorable sailor always makes a splash.

Navy satin dress with sequin appliques along the hemline and an attached red petticoat. Includes sailor hat and cuffs. (Earrings not included) (3 piece Set)



Style 9440

“Ship Shape”

S, M, L, XL

Navy romper with sailor collar has embroidery design on hip and removable red necktie that can also be worn as a waist sash. Includes matching satin pleated skirt with anchor buttons, sailor hat, cuffs, and stocking topper bow pins with anchors. (Stockings not included) (6 piece set)

*This naughty sailor is such a flirt,
when manning her ship, she takes off
her skirt!*





There's no place a sailor would rather be, then with this pin-up girl out at sea!



Retro pin-up style sailor dress with front shirring and layered ruffled back. Includes matching sailor hat, striped thigh high stockings with anchors and removable/adjustable garters. (3 piece set)

Style 8818
"Sailor Pin-up"
S, M, L, XL



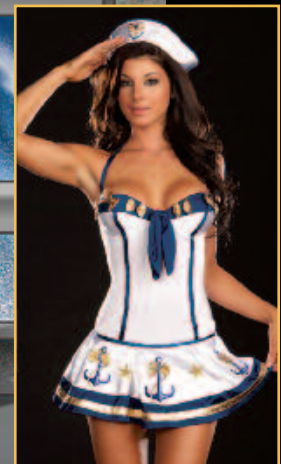
Anchors a -wow!

Style 5985

"Makin' Waves"

S, M, L, XL, 1X/2X, 3X/4X

Stretch knit dress with lightly padded underwire cups, contrast navy piping and gold foil bows on neckline and neckline and gold foil bow hem trim with printed anchor accents. Includes matching long sleeved shrug with foil star detail and sailor hat with anchor and gold foil bow. (3 piece set)



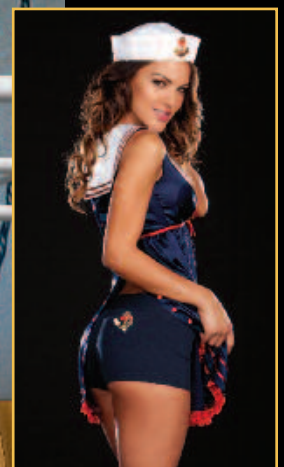
This sailor girl is quite a cutie. Out at sea you'll find this beauty.

Style 7577

"Sailor Mine"

S, M, L, XL

Empire waist dress with snap down back, sailor collar and sequin anchor pockets. Includes matching boy shorts with anchor patch and sailor hat. (3 piece set)





Beauties

international

Style 9492



*This Bavarian beauty has lots of cheer
and an ice-cold beer!*

Style 9492

"Happy New Beer!"

S, M, L, XL, 1X/2X, 3X/4X

Blue satin and velvet dress with authentic Bavarian embroidery design. Includes ruffled apron with bow, and hair bows.
(Beer Stein, thigh highs and stocking bows not included)
(3 piece Set)



(Shown With)
Style 7031
"Sheer Thigh High"
Black, Red, White
O/S



This sexy Scottie wants to tilt your kilt.



Style 9499
"Scottie Hottie"
S, M, L, XL

130

Charming Scottie dress has velvet vest with hook and eye front detail with attached woven tartan plaid skirt. Includes hat, sleeves, and stocking topper bows. (4 piece set)

(Shown With) Style 7031 "Sheer Thigh High"
Black, Red, White
O/S



Be glad for this hunky Scottish lad!



Plaid pleated kilt with attached sash. Includes matching hat, belt with bag and two sock garters with matching plaid ties. (Socks and shirt not included) (5 piece set)

Style 5084
"Hot Scottie"
M, L, XL, XXL



This warm-hearted Eskimo will never give you the cold shoulder.

Style 9495

"Ice Ice Baby"

S, M, L, XL

White stretch velvet hooded dress with faux fur trim. Includes mittens, boot covers and belt. (4 piece Set)

(Suggested Accessory)
Style 4582
"Ursula Petticoat"
Black, White
O/S



Style 8852

“The Geisha with the Dragon Tattoo”

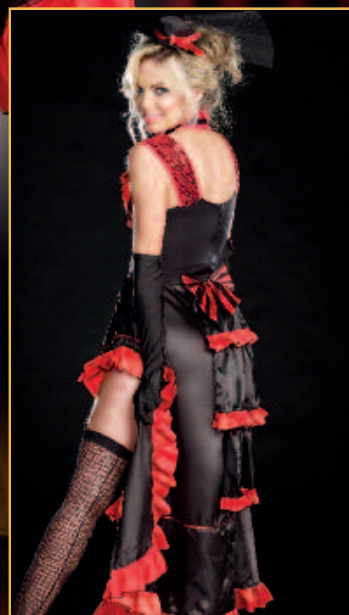
S, M, L, XL

Black dress with red foil dragons and red sequin obi belt with satin ribbon tie. Includes mandarin collar choker, flower barrette and chop sticks for the hair.
(Thigh highs not included)
(5 piece set)

*This exquisite beauty is such a delight,
men are captivated at her sight.*



The men in the audience knew they didn't stand a chance, when this French beauty did her dance.



Style 8217

"Can-Can in Paris"

S, M, L, XL, 1X/2X, 3X/4X

Corset style dress with lightly padded underwire cups embellished with sequin and satin trim and attached multi layered ruffle skirt with back bustle. Includes adjustable/removable garters, mini hat and choker. (Thigh highs and gloves not included) (3 piece set)

(Shown With) Style 5218 "Luna Glove" Black, White O/S



This Mardi Gras Maven is looking sweet, when she throws her beads on Bourbon Street.



Green and purple foil print dress with removable/adjustable shoulder straps, multi layered ruffled skirt with gold sequin trim. Includes shrug with sequin trim. (Mask and jewelry not included) (3 piece set)

Style 8878

"Mardi Gras Maven"

S, M, L, XL

Style 7572

“Ally Kazam”

S, M, L, XL

Chiffon peasant styled top with gold foil paisley print trimmed with gold sequin band. Matching genie pants with gold sequin waistband have attached stretch shorts inside. Includes scarf and head piece. (4 piece set)



This sexy hottie has a harem of men and won't share em'!

Style 5238

“Mardi Gras Queen”

XS, S, M, L

Underwire bra and matching short with attached back train both with sequin and beaded trims. Includes headpiece, neck collar and arm band. (5 piece set)



This beaded beauty is a treat for all the men on Bourbon Street.

All the boys heads will twirl when they see her hips swirl.



Style 8854

“Tahiti Sweetie”

S, M, L, XL

Tahitian inspired costume with lightly padded coconut bra cup, adjustable shell adorned halter ties, two adjustable back ties and shell appliqué. Grass skirt with tassels and shell detail appliques. Includes matching headpiece and faux flower wristbands. (Straw pom poms not included) (4 piece set)



Jump in the conga line! She'll shake her body and make you feel fine!

Watermelon inspired dress with lightly padded underwire cups with adjustable halter ties, sequin front panel and multi colored ruffle hemline. Includes matching ruffle sleeve, removable bananas on the skirt and fruit adorned hat. (3 piece set)

Style 8138

"Juana Banana"

XS, S, M, L



This flirty beer girl with all her curves, drives them wild when she serves.

Light up costume

Black velvet Bavarian beer girl dress has rhinestone and embroidery front appliqué, satin skirt with attached apron, chiffon sleeves and large back bow. Includes hair ribbons, LED light-up mug, batteries and instructions. (Thigh highs not included) (3 piece set)



This super sexy Eskimo will melt your popsicle.

Style 4550

"Eskimo Cutie"

XS, S, M, L

Zipper front stretch crushed velvet dress with faux fur trimmed hood with pom pom ties. Includes mittens, faux fur trimmed boot covers and faux chocolate popsicle. (Petticoat not included) (4 piece set)

(Shown With)
Style 4578
"Angel Petticoat"
Black, Red, White
O/S





what a

Character

Style 9491



Style 9491

“Just Kickin’ It”

S, M, L, XL

Sexy romper has a contrast silver lamé lace-up plunge neckline. Open side skirt has silver lamé trim and novelty sequin waistband with dragon appliqué. Includes headband and ninja mask. (Sword and fingerless gloves not included)



(Shown With)
Style 9517
“Fingerless Gloves”
Black
O/S



*This Ninja beauty is fearless and fast
and as you can see she’s built to last.*



Style 9496

"Double-Edged Diva"

S, M, L, XL, 1X/2X, 3X/4X

Black stretch knit snap front dress has ruffle detailing and attached cape. Includes hat, mask, and waist corset. (Sword and pantyhose not included) (4 Piece Set)



(Shown With)
Style 7037
"Fishnet Pantyhose"
Black
O/S



Style 9512

“Super Woman”

S, M, L, XL

Red and blue stretch knit dress with gold sequin detailing has an attached red cape. Includes jeweled head piece, gold wrist gauntlets and garter with gold rope. (4 piece set)

This super sexy defender against villains and crime, will take you to great heights all of the time.



Style 9481*"Monster Love"*

S, M, L, XL, 1X/2X, 3X/4X

*You probably wouldn't dread a monster
that looks like this under your bed!*

Dress with faux fur front inset has a contrast ruffle front and tiered ruffle back. Includes brightly colored striped faux fur monster hood with 3-dimensional eyes with lashes and eye shadow, heart printed horns, large teeth and heart antennae. (Wig not included) (2 piece set)



(Shown With)
Style 9555
"Monster Love
Boot Cover"
Black/Fuchsia/White
O/S

(Shown With)
Style 9191
"Light-Up Long Wig"
Green
O/S



Style 9482

“Party Monster”

S, M, L, XL

Party like this monster and you will see, how much more fun life can be.

Tie-dye faux fur monster dress has multi-colored foil printed skirt and faux fur front inset. Includes furry hood with 3-dimensional eyes with lashes and eye shadow, yellow horns, nose and large teeth. (Fingerless gloves not included) (2 piece set)

(Shown With)
Style 9555
“Monster Love
Boot Cover”
Black/Fuchsia/White
O/S

(Shown With)
Style 8978
“Neon Fishnet
Thigh Highs”
Neon Pink
O/S

(Shown With)
Style 9191
“Light-Up Long Wig”
Green
O/S



Come with us tonight, where
electric daisies sparkle bright.

Life can be ecstasy in Kandi Land.
Where one never knows where one
might land.



Style 8968

"Dazed"

S, M, L, XL

Hot pink light-up multi color daisy top with lightly padded cups and fringe detail. Includes hot pink bikini bottom, neon green tutu with removable/adjustable garters, hair bow barrette, batteries and instructions included. (Wig, jewelry, thigh highs and boot covers not included) (4 piece set)



(Shown With) Style 9191 "Light-Up Long Wig" Green O/S
Style 9193 "Boot Covers" Neon Pink O/S; Style 9195 "Rainbow Daisy Thigh Socks" Multi O/S



Versatile

Versatile neon rainbow knit striped dress may be folded in half and worn as a bandeau top. Includes matching neon rainbow tutu. (Jewelry, blue wig, neon light-up wig, thigh highs and boot covers not included) (2 piece set)

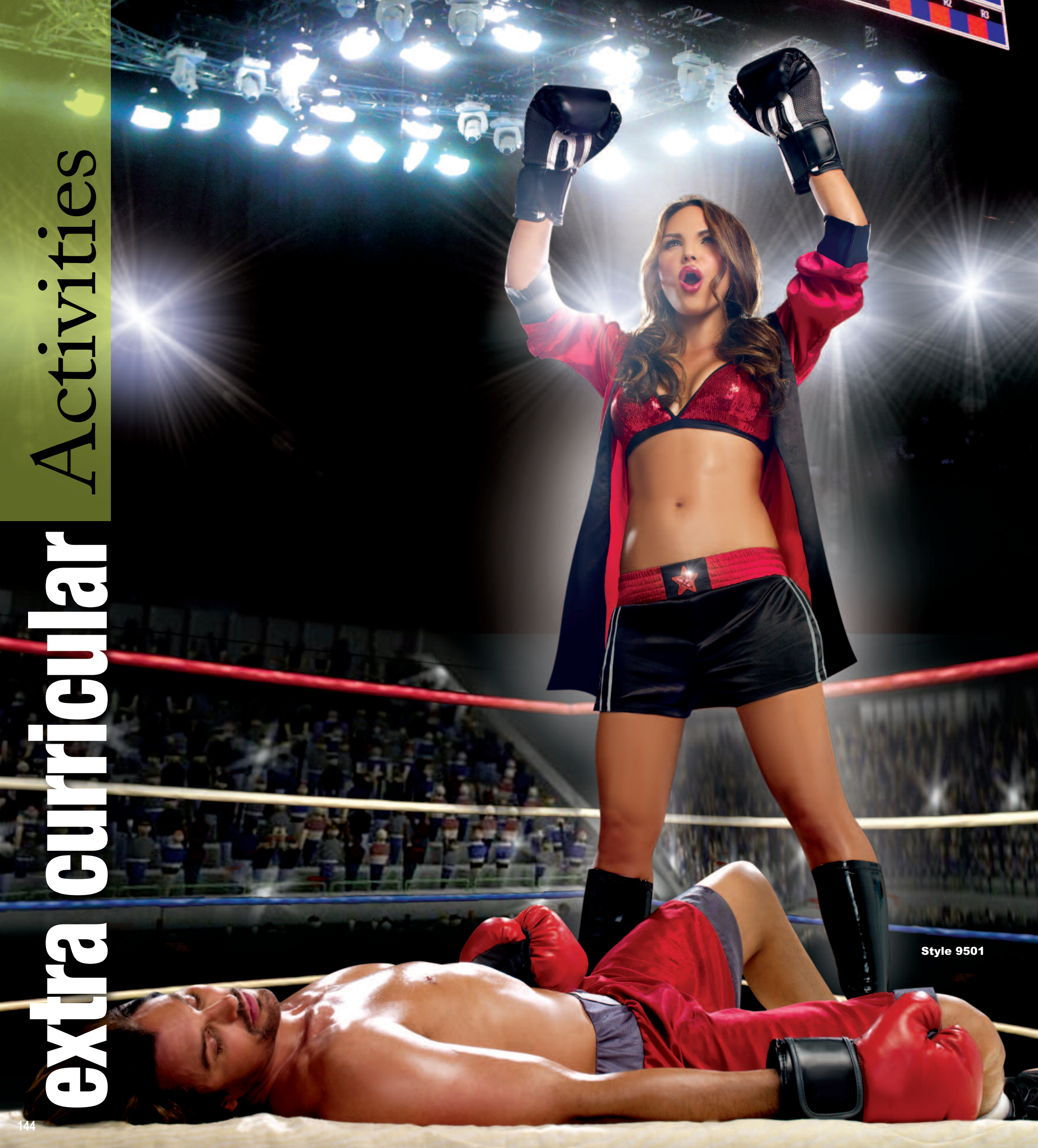


(Shown With) Style 8894 "Kandi Kid Wig" Multi O/S
Style 9192 "Rainbow Boot Covers" Multi O/S

Style 8877

"Kandi Kid"

S, M, L, XL



extra curricular Activities

Style 9501

This world-class knockout loves being on top.

Versatile top can be worn as a sequin sports bra when midriff is zipped off. Includes hooded robe and satin shorts with sequin star appliqué. (Boxing gloves not included) (3 piece set)



Convertible



Style 9500

“Player’s Club”

S, M, L, XL

Sporty stretch knit romper has large holographic numbers and gold sequin trim. Includes skirt with athletic detailing and athletic thigh high socks. (Football not included) (3 piece set)



*Better get ready and know what to do,
when this athletic beauty tackles you.*

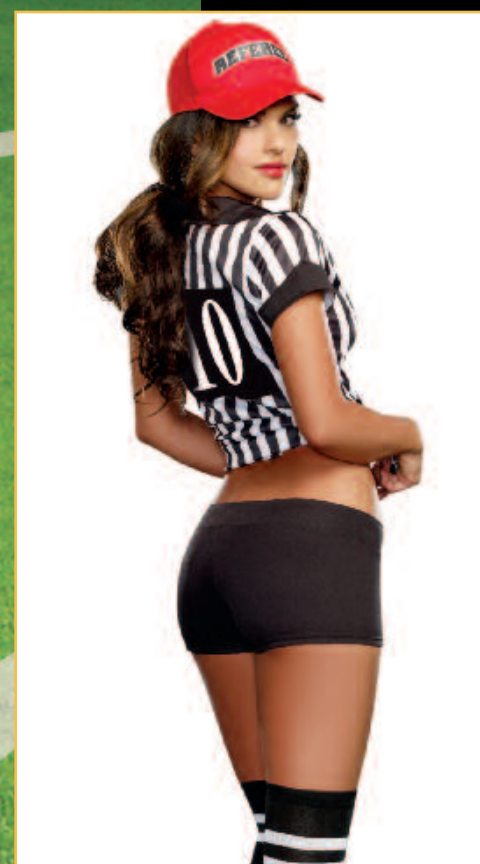
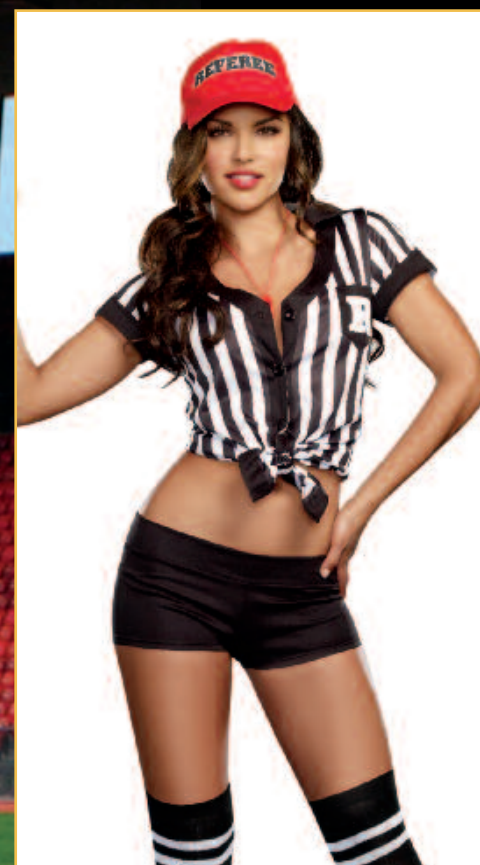


This versatile button down dress can also be worn tied around the waist as a top. Includes shorts, thigh high socks, whistle and hat. (5 piece set)



This insatiable referee loves when players play rough, once she blows her whistle, their growing yardage is never enough.

Convertible



Style 6469

“Grand Slam”

S, M, L, XL

Stretch knit snap front dress with sequin embroidered “Gram Slam” appliqué and heat transfer number “10” detail on back. Includes stretch knit short with elastic waist, baseball cap and athletic knee high socks. (5 piece set)



This Grand Slam player always brings ‘em home!



Style 3760

“Boxer Girl”

S, M, L, 1X/2X, 3X/4X

Stretch knit underwire camisole and matching skirt with shirring details. Includes matching robe with sash tie and boxing gloves. (5 piece set)

This sexy lightweight is a true knock-out.



C'mon and take a ride on the wild side.



Style 6477

“Ride It”

XS, S, M, L

Gloss checker print microfiber zip front romper with side stripes and race car patches. Includes matching microfiber checker print skirt, belt with “Racing” heat transfer and flag. (Sunglasses and fence nets not included) (4 piece set)



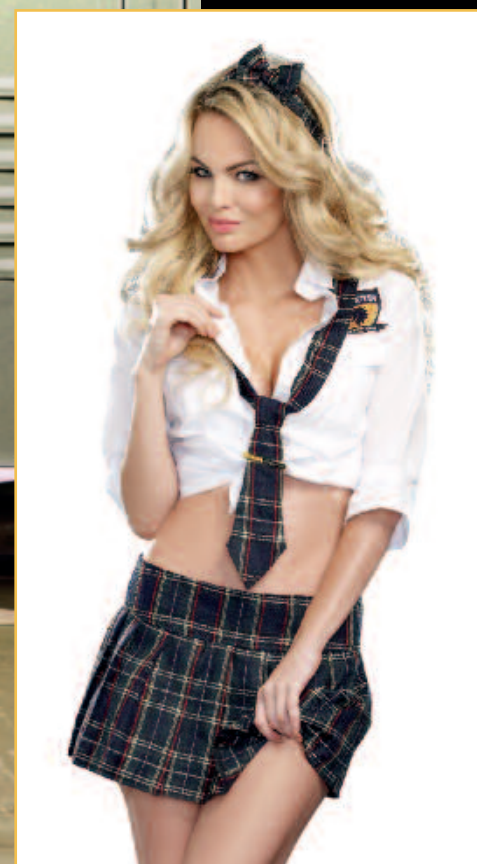
Style 9419

"Prep School"

S, M, L, 1X/2X, 3X/4X

*This naughty schoolgirl is hot - that's true- but
better watch out or she'll gossip about you.*

Button front white
collar shirt with a
Manhattan Preparatory
School patch and woven
plaid pleated schoolgirl
skirt. Includes tie with
clip and headband.
(Knee high stockings
not included)
(4 piece Set)



Style 9418

“My Bad”

S, M, L, XL

Woven red schoolgirl plaid dress with removable/adjustable garters, metal studs along the neckline and large hook and eye front trim for an edgy look. Includes metal chain choker and novelty fingerless gloves. (Wig and thigh highs not included) (3 piece Set)

(Shown With)
Style 9489
“So Bad Wig”
Red-Black
O/S

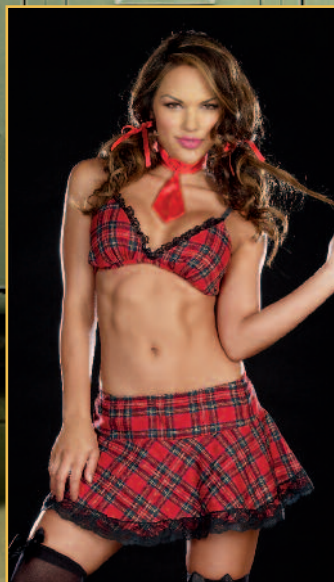


Breaking the rules can be such fun, under the bleachers with this naughty one.



All of the boys sure did drool, when this smokin' hot schoolgirl came to school.

Convertible



Style 8201

"After School Special"

XS, S, M, L

Convertible school girl has button down preppy top with chenille varsity letter detail and flirty pleated skirt. Coordinating lace trimmed bra top and necktie included. (Thigh highs and hair bows not included) (4 piece set)



How the school boys did drool, when this class act came to school!



Style 8761

"Class Act"

S, M, L, XL

Woven red plaid drop waist dress with lightly padded underwire cups and attached belt with pleated skirt. Dress has zip front and adjustable corset lace-up back. Includes black shrug with plaid trim and necktie. (Hair bows, glasses and anklet socks not included) (3 piece set)

She was every schoolboy's fantasy.

Reversible



Style 6452

"Trouble At School"

S, M, L, XL, 1X/2X, 3X/4X

Reversible plaid Schoolgirl/Teacher pinstripe skirt with kilt pin, button front jacket and stretch knit tie front top. Includes apple pin, "Teacher Miss Ivana Youngman" name badge, hair bows and eye glasses. (Thigh highs not included) (8 piece set)



Seasonal

Sweeties

They are always after her for her lucky charms!



Style 8888

"Lady Luck"

S, M, L, XL

Stretch knit corset style brocade bodice dress with adjustable front lace-up panel, satin skirt and attached apron with shamrock details. Includes matching mini top hat on headband, hair ribbons and leg garter.
(Beer mug, thigh highs and petticoat not included) (4 piece set)

(Shown With) Style 7031 "Sheer Thigh High" Black, Red, White O/S
(Shown With) Style 4578 "Angel Petticoat" Black, Red, White O/S



With his pot of gold, getting
lucky is easy!



Style 4481

"Get Lucky Leprechaun"
M, L, XL, XXL

Button front vest and matching suspenders. Includes hat, large bow tie and arm band with "Kiss Me" clover. (Pants not included)
(5 piece set)

Oi' Saint Patrick you'll be thanking,
when you give this naughty
leprechaun a spanking.



Style 5199

"Spank Me I'm Irish"
S, M, L

Stretch knit strapless dress with attached belt, felt clover detail skirt and puff arm sleeves. Includes hat, pot of gold bag and riding crop. (Thigh highs not included) (6 piece set)

(Shown With) Style 7031 "Sheer Thigh High"
Black, Red, White O/S

Style 8892

“American Booty”

S, M, L, XL

Red, white & blue stars and stripes print dress with adjustable length sides. Includes patriotic top hat. (2 piece set)



Come celebrate with this all American beauty, she’s so patriotic, and what a cutie!



This beaded beauty is a treat for all the men on Bourbon Street.



Style 5238

“Mardi Gras Queen”

XS, S, M, L

Underwire bra and matching short with attached back train both with sequin and beaded trims. Includes headpiece, neck collar and arm band. (5 piece set)



Style 6540

“Miss Liberty”

S, M, L, XL

Stretch knit faux wrap dress with side shirring detail. Includes headpiece and light-up torch with battery. (3 piece set)



Give me your tired, your poor and your hot guys for sure!



This Mardi Gras Maven is looking sweet, when she throws her beads on Bourbon Street.



Style 8878

“Mardi Gras Maven”

S, M, L, XL

Green and purple foil print dress with adjustable/removable shoulder straps, multi layered ruffled skirt with gold sequin trim. Includes shrug with sequin trim. (Mask and jewelry not included) (3 piece set)



Style 4552

"Sleigh Belle"
XS, S, M, L

Zipper front crushed stretch velvet dress with faux fur trim hood with pom pom ties and attached tulle petticoat. (Additional petticoat not included) (1 piece set)

(Shown With)
Style 4578
"Angel Petticoat"
Black, Red, White
O/S



This sexy belle wants to take you on a snow melting sleigh ride.

Sexy Santa is here for you. She wants to make all your wishes come true!



Style 8870

"Santa Baby"
S, M, L, XL

Red stretch crush velvet dress with faux fur trim at neckline and hem. Includes matching long sleeve shrug, belt, jingle bell stocking toppers and Santa's hat. (Thigh highs and gloves not included) (5 piece set)

(Shown With)
Style 7031
"Sheer Thigh High"
Black, Red, White
O/S



Style 4017

"Santa's Sweetie"
S, M, L

Stretch velvet dress with faux fur trim. Includes hat, necklace, belt and gauntlets. (6 piece set)



She's always naughty on hot holiday nights!

This sexy Santa loves when you are naughty!



Style 8972

"Under The Mistletoe"
S, M, L, XL

Red satin dress with faux fur trim, adjustable shoulder straps and bow details. Includes Santa hat and faux fur boot toppers. (3 piece set)

accessories

Style 9547

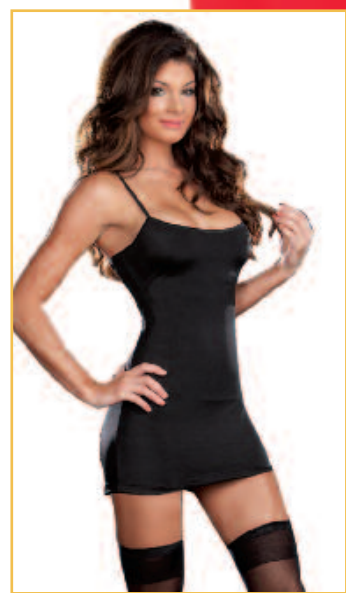


Imagine the possibilities...



**BUILD YOUR OWN DREAM COSTUMES WITH DREAMGIRL.
WHO WILL YOU BE TONIGHT?**

Style 9526



Style 5832
"Basic Dress"
Black, Red
S, M, L, XL



Stretch microfiber dress with internal stretch bra.
Add costume accessories to this dress to create many
different costume options.

(Suggested Accessory) Style 8346 "She's My Hero" O/S
Style 9539 "Devil Mini Kit" Red O/S



Shiny stretch dress with internal shelf bra and
adjustable shoulder straps. Just add accessories to this
dress to create many different costumes.

(Suggested Accessory) Style 9524 "Glam Cop Hat" Leopard O/S
Style 9594 "Cougar-luscious Kit" Leopard O/S

Style 9526
"Liquid Dress"
S, M, L, XL



Style 9527

"Camo Dress"

S, M, L, XL

Camouflage print stretch knit dress with adjustable shoulder straps. (Hat not included)

(Suggested Accessory) Style 8352 "Battalion Babe" S/M, M/L



Style 8915

"Football Dress"

S, M, L, XL

Zip front football jersey dress with front screen-printed #10 and athletic detailing. (Socks, football and hair ribbons not included) (1 piece set)



One shoulder animal print brushed knit dress.
(Bone barrette not included)
(1 piece set)

Style 8910

"Cave Girl"
S, M, L, XL



Style 8909
"Blue Gingham Dress"
S, M, L, XL
Blue and white check dress with white chiffon sleeves.
(Thigh highs, hair bows, petticoat, dog and basket not included)
(1 piece set)

(Shown With)
Style 4582
"Ursula Petticoat"
Black, White
O/S



Style 8934
"Neon Rocker and Raver Starter Dress"
Hot Pink
S, M, L, XL

Off-the-shoulder stretch microfiber spandex dress with laser cut slashes.
(1 piece set)

Style 9535

"Fringe Top"
Black, Neon Pink
S, M, L, XL

This fully fringed top can be used to create many different looks and also makes a great addition to any wardrobe.



(Suggested
Accessories)

Style 9514
"Flapper Headpiece"
Black
O/S

Style 9533
"Sequin Shrug"
Black
S/M, M/L



Style 8912

"Flapper"
Black, Red
S, M, L, XL, 1X/2X, 3X/4X

Full fringe dress with adjustable shoulder straps.



Style 9531

"Sequin Top"
Black
S/M, M/L

This front and back shimmering sequin top can be used to create many different costumes and also makes a great addition to any wardrobe.

(Suggested Accessories)

Style 9514
"Flapper Headpiece"
Black
O/S

Style 9533
"Sequin Shrug"
Black
S/M, M/L

Style 8915
"Fringe Starter Skirt"
Black
S/M, M/L

Style 9536

"Sequin Tube"
S/M, M/L

This gold front and back sequin top can be used to create many different costumes and also makes a great addition to any wardrobe.

(Suggested Accessory)
Style 6045

"Liquid Legging"
Black, Gold
S/M, M/L

Style 9533

"Sequin Shrug"

S, M, L, XL

Black sequin shrug is fully lined and works beautifully over costumes or added to any wardrobe.

(Suggested Accessory) Style 9514 "Flapper Headpiece" Black O/S
Style 9535 "Fringe Top" Black, Neon Pink S/M, M/L
Style 8907 "Sequin Starter Skirt" Black, Red S/M, M/L

Style 8358

“Pretty N’ Peasant”
Red, White
S/M, M/ L

Sexy off-the-shoulder knit top with elastic ruffled detail and bow accent. Great starter top for many costume ideas.
(1 piece set)

(Shown With)
Style 9544
“Ruffled Skirt”
S, M, L, XL
Black



Style 8358

“Pretty N’ Peasant”
Red, White
S/M, M/ L

Sexy off-the-shoulder knit top with elastic ruffled detail and bow accent. Great starter top for many costume ideas.
(1 piece set)

(Shown With)
Style 4573
“Rizzo Legging”
S/M, M/L
Black

(Suggested Accessory)
Style 8347
“Golden Booty”
Pirate Kit
S/M, M/L

Style 9519

“Striped Peasant Top”
Red/Black
S/M, M/L

Red and black striped satin peasant top with sheer sleeves is perfect for creating your own pirate costumes.
(1 piece set)

(Shown With)
Style 9544
“Ruffled Skirt”
S, M, L, XL
Black



Style 8902

“Peasant Top”
Black”
S/M, M/L

Black glossy stretch knit peasant top with sheer sleeves that may be worn on or off the shoulder.
(Sword, hat and skirt not included)
(1 piece set)

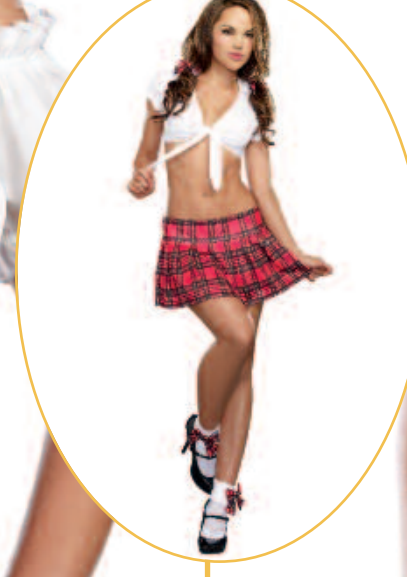
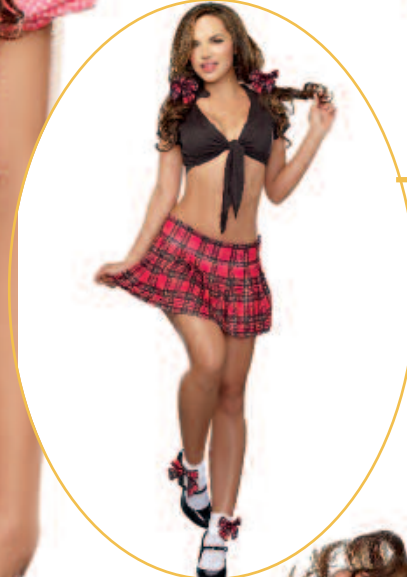
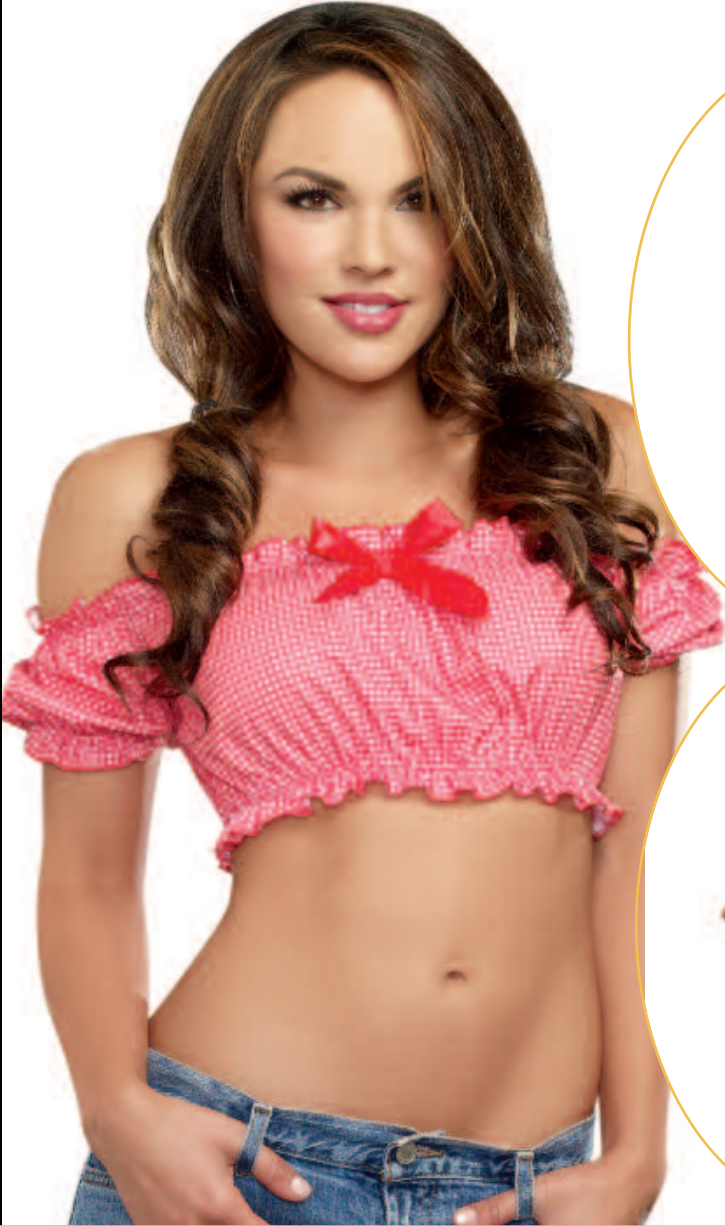
(Suggested Accessory)
Style 9546
“Pirate Mini Kit”
Waist wrap, Head scarf
S/M, M/L

Style 9532

“Country Girl Top”
Red/White Gingham
S/M, M/L

Off-the-shoulder stretch knit gingham top with blousy shirring all around and satin bow detail on neckline. (Shorts not included) (1 piece set)

(Suggested Accessory)
Style 9545
“Western Skirt”
Brown
S, M, L, XL

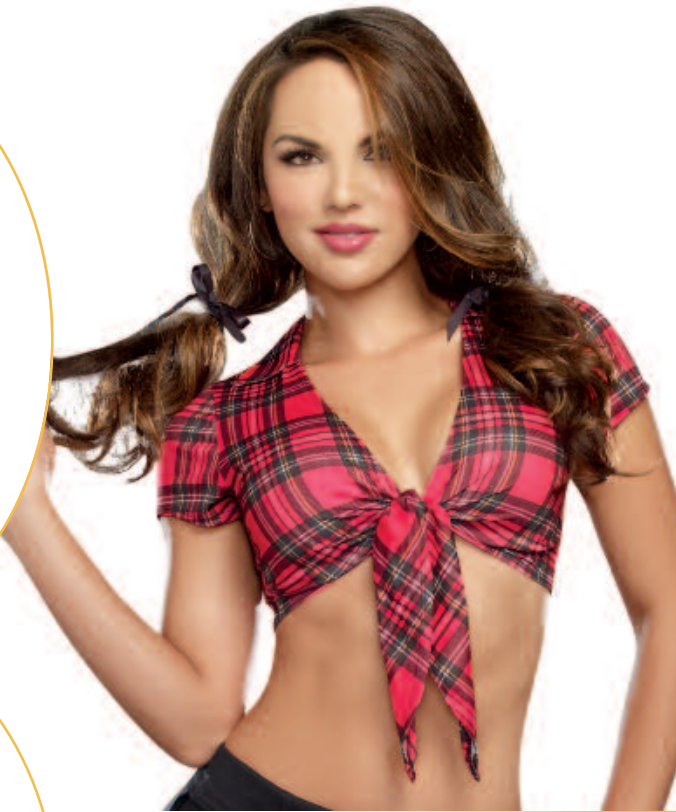


Style 9530

“Schoolgirl Top”
Red Plaid
S/M, M/L

Plaid stretch knit plunging neckline shirt with cap sleeves. Great starter shirt for many costume ideas. (Skirt not included) (1 piece set)

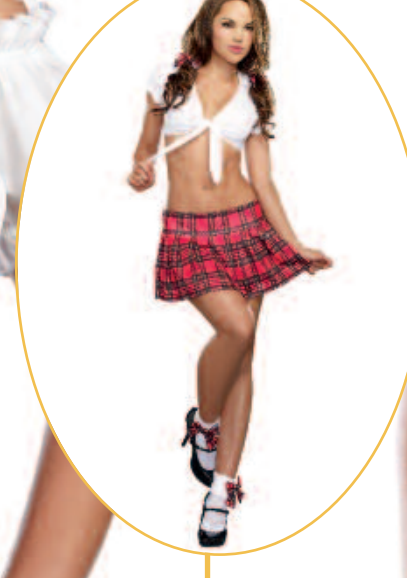
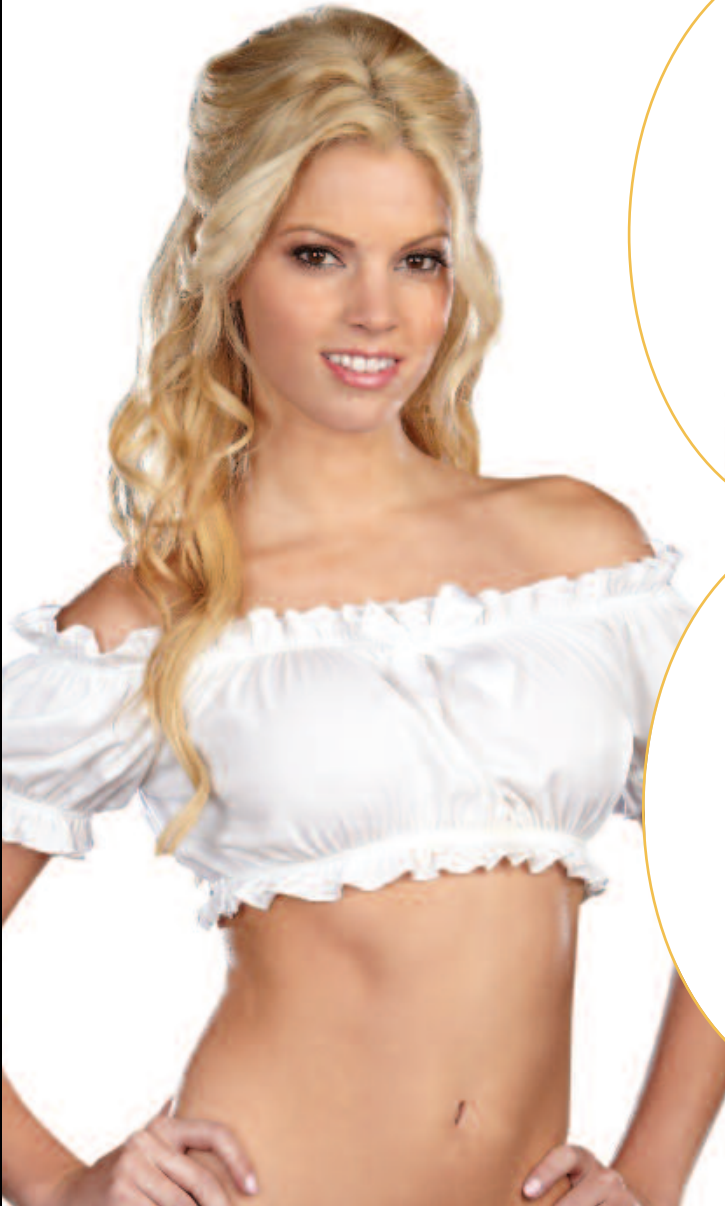
(Suggested Accessory)
Style 9590
“Naughty Schoolgirl Skirt”
Black
S, M, L, XL



Style 8947

“Ho Garden Top”
White
S/M, M/L

Off-the-shoulder stretch knit top with blousy shirring all around and satin bow detail on neckline. (Skirt not included) (1 piece set)



Style 8355

“All Tied Up”
Black, White
S/M, M/L

Stretch knit plunging neckline skirt with cap sleeve. Great starter shirt for many costume ideas. (Shorts not included) (1 piece set)

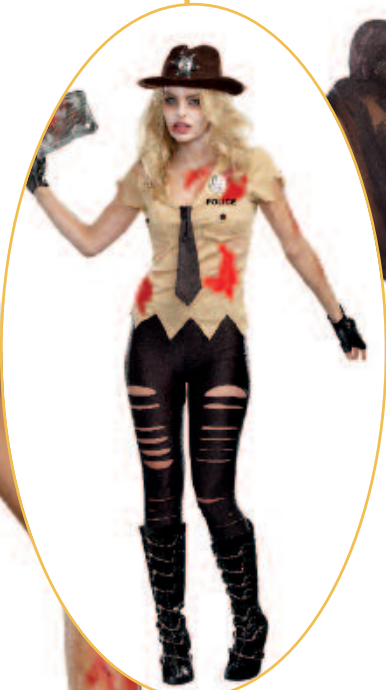
(Suggested Accessory)
Style 9540
“Schoolgirl Mini Skirt”
Red
S/M, M/L

Style 9534

“Zombie Top”
S/M, M/L

Blood splattered jagged edge stretch knit top has an attached tie. (Hat, badge, pants and cleaver not included)
(1 piece set)

(Suggested Accessory)
Style 6584
“Getting Ripped Legging”
Black
S/M, M/L



Style 9546

“Pirate Mini Kit”
S/M, M/L

Pirate mini kit includes gold foil skull printed waist wrap and matching head scarf. (Leggings and jewelry not included)
(2 piece set)

(Shown With)
Style 6045
“Liquid Legging”
Black, Gold
S/M, M/L



Style 9539

“Devil Mini Kit”
Red
O/S

Devil mini kit includes a sequin devil horn headband, devil's tail with sequin heart and sequin devil's fork. (Dress not included)
(3 piece set)

(Shown With)
Style 5832
“Basic Dress”
Black, Red
S, M, L, XL
(Suggested Accessories)

Style 8927
“Burlesque Bustier”
Baby Pink, Black, Red
32, 34, 36, 38

Style 8907
“Sequin Starter Skirt”
Black, Red
S, M, L, XL



Style 8347

“Golden Booty”
S/M, M/L

Satin brocade vest with stretch knit back and center front gold button closure. Includes head scarf with gold skull screenprint and faux vinyl cross body belt. (Leggings, top and sword not included)
(3 piece set)

(Shown With)
Style 4573
“Rizzo Legging”
Black
S/M, M/L

Style 8358
“Pretty N’ Peasant”
White
S/M, M/L



Style 8352

"Battalion Babe"
S/M, M/L

Cropped stretch knit vest with zip front closure and wide attached belt detail. Includes matching military hat. (Shorts not included) (2 piece set)

(Suggested Accessory)
Style 9527
"Camo Dress"
S, M, L, XL



Style 8903

"Native Hippie Set"
Brown
S/M, M/L

Ultra suede halter top with adjustable ties, criss-cross neckline, full fringe hem and soft headband. (Shorts not included) (2 piece set)



Style 8904

"Gangster Kit"
Black
S/M, M/L

Black and white pinstriped halter top with attached carnation, center front buttoned and red necktie. (Jewelry not included) (2 piece set)

(Suggested Accessory)
Style 8907
"Sequin Starter Skirt"
Black, Red
S, M, L, XL



Style 8346

"She's My Hero"
O/S

Superhero star studded cape with tie front closure. Includes gold lamé headband and wristband with star screenprint detail. (Dress not included) (3 piece set)

(Shown With)
Style 5832
"Basic Dress"
Black, Red
S, M, L, XL



Style 9540

"Schoolgirl Mini Kit"
O/S

Schoolgirl mini kit includes a plaid pleated skirt, matching hair bows, stocking or anklet topper bow pins. (Shirt and socks not included) (3 piece set)

(Shown With)
Style 8355
"All Tied Up"
Black, White
S/M, M/L

Style 8935

“Leopard Kitty Mini Costume Kit”

S/M, M/L

Kit includes capelet with leopard faux fur trimmed hood with pom pom ties, tail and matching boot covers (Dresss not included) (3 piece set)



Style 9537

“French Maid Kit”

O/S

Sexy French maid kit includes a full feather duster with satin bow, ruffled lace headpiece, choker and lace apron with scalloped ruffled lace. (Corset and petticoat not included) (3 piece set)



(Shown With)
Style 9552
“French Maid Bustier”
Black/White
32, 34, 36, 38

Style 9551
“French Petticoat”
Black, Red, White
O/S



Style 9594

“Cougar-luscious Kit”

Leopard Print
O/S

Animal print velvet headband with cat ears, matching lacy choker with cat bell and attachable tail with bow. (Unitard not included) (3 piece set)

(Shown With) Style 9558 “Liquid Unitard” Black S/M, M/L
Style 9526 “Liquid Dress” Black S, M, L, XL

Style 9552

“French Maid Bustier”

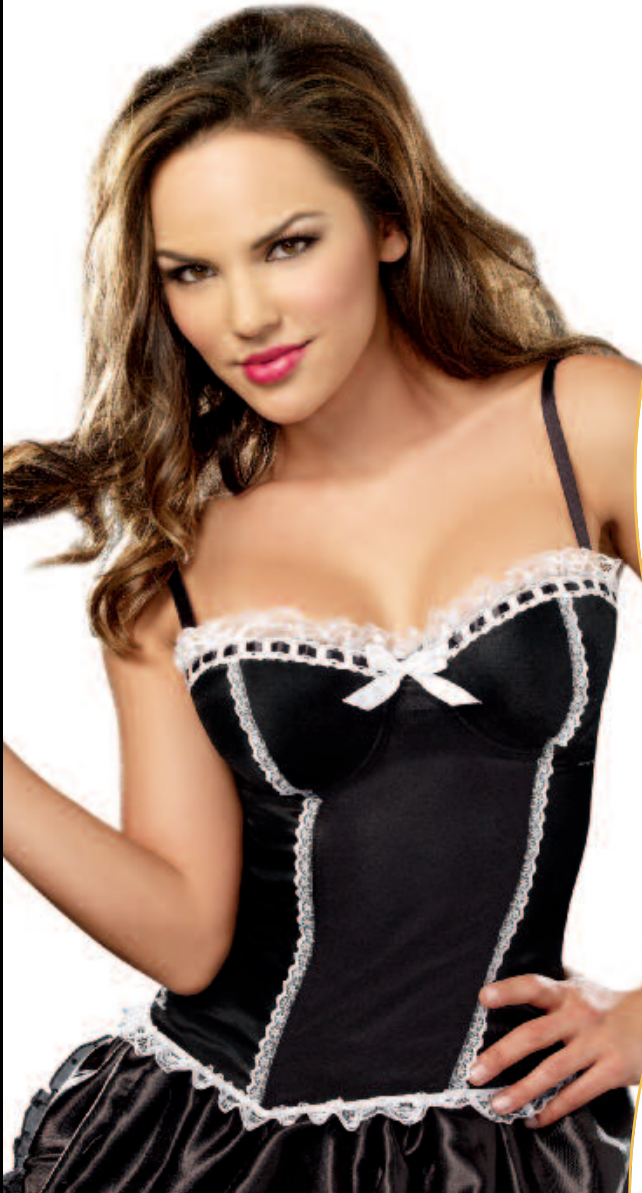
Black/White

32, 34, 36, 38

Flirty French maid bustier has a zipper back closure and ruffled white lace along the sweetheart neckline, princess seams and hem. (Petticoat not included) (1 piece set)

(Shown With)
Style 9551
“French Petticoat”
Black, Red, White
O/S

(Suggested
Accessory)
Style 9537
“French Maid Kit”
O/S



Style 8927

“Burlesque Corset”

Baby Pink, Black, Red

32, 34, 36, 38

Fully boned bustier with lightly padded underwire cup, sequin fabric front inset and hook & eye back closure. Includes removable/adjustable shoulder straps. (1 piece set)

Style 8927

“Burlesque Corset”

Baby Pink, Black, Red

32, 34, 36, 38

Fully boned bustier with lightly padded underwire cup, sequin fabric front inset and hook & eye back closure. Includes removable/adjustable shoulder straps. (1 piece set)

(Shown With)
Style 7007
“Tutu Petticoat”
Black/White
O/S



(Suggested Accessories)

Style 9539
“Devil Mini Kit”
O/S

Style 8907
“Sequin Starter Skirt”
Black, Red
S, M, L, XL

Style 7789
“What’s Shakin’”
Black
S, M, L, XL
Fringe short

Style 8926

"Victorian Vamp Bustier"

Dark Red

32, 34, 36, 38

Fully boned brocade taffeta bustier with velvet flock pattern, rhinestone ruffled neckline and front zipper closure. Includes removable/adjustable shoulder straps. (Petticoat not included) (1 piece set)

(Shown With)
Style 8964
"Fairytale Petticoat"
Black, White
O/S



Style 8928

"Rave and Roses Bustier"

Neon Lime, Neon Pink

32, 34, 36, 38

Fully boned stretch lace bustier with lightly padded underwire cups, and hook & eye back closure. Includes removable/adjustable shoulder and garter straps. (Tutu, thigh highs and leggings not included) (1 piece set)



Style 9549
"Schoolgirl Bustier"

Red Plaid

32, 34, 36, 38

Schoolgirl plaid bustier with underwire foam cups and hook and eye front detail has a back zipper and adjustable shoulder straps. (Skirt not included) (1 piece set)

(Shown With) Style 9590 "Naughty Schoolgirl Skirt" Black S, M, L, XL

Style 9194

“Burlesque Skirt”

Black

O/S

Black high-low hemline satin with organza skirt features multi layered ruffle back detail. (Hat, jewelry, corset cape and thigh highs not included)
(1 piece set)



Style 9544

“Ruffled Skirt”

S, M, L, XL

Black satin multi layered ruffled skirt with side zipper can be used to create many different costumes.
(1 piece set)

(Suggested Accessory)
Style 9519
“Striped Peasant Top”
Red/Black
S/M, M/L

Style 8907

“Sequin Starter Skirt”

Black, Red

S, M, L, XL

A-line skirt with zipper closure and sequins on the front and back.
(1 piece set)

(Suggested Accessory)
Style 9539
“Devil Mini Kit”
O/S



Style 8916

“Fringe Starter Skirt”

S, M, L, XL

Black skirt with fringe on the front and back. (Top and pantyhose not included)
(1 piece set)

(Shown with)
Style 9531
“Sequin Top”
Black
S/M, M/L

Style 9590
"Naughty Schoolgirl Skirt"
Black
S, M, L, XL

Black pleated schoolgirl skirt with zipper closure. (Stockings not included)
(1 piece set)

(Suggested Accessory)
Style 9530
"Schoolgirl Top"
Red Plaid
O/S



Style 9545
"Western Skirt"
Brown
S, M, L, XL

Western styled stretch ultrasuede skirt has star studs and layers of fringe.

(Suggested Accessory)
Style 9532
"Country Girl Top"
Red/White Gingham
S/M, M/L

Style 6586
"Schoolgirl/Gangster Skirt"
S, M, L, XL

Pleated reversible plaid Schoolgirl/Gangster pinstripe skirt. (Top not included)
(1 piece set)



Style 4573
Black
S/M, M/L

Basic stretch knit crop legging.

Style 6045

"Liquid Legging"

Black, Gold

S/M, M/L

Glossy stretch knit
legging.



Style 6045

"Liquid Legging"

Black, Gold

S/M, M/L

Glossy stretch knit
legging.

(Suggested Accessory)

Style 9536
"Sequin Tube"
Gold
S/M, M/L

Style 9605

"Men's Disco Pant"

M, L, XL, XXL

Men's polyester
flare legged
disco pants with
shiny foil dot at
hem. Elastic
back waist
allows for
adjustability.

(Suggested
Costume)
Style 9605
"Disco Dude"
M, L, XL, XXL



Style 9558

"Liquid Unitard"

Black

S/M, M/L

Glossy stretch knit
unitard can be used
to create many
different costumes.

(Suggested Accessories)

Style 9532
"Glam Cop Hat"
Animal Print
O/S

Style 9594
"Cougar-luscious Kit"
Animal Print
O/S

Style 0072
“Basic Unitard”
S/M, M/L, 1X/2X, 3X/4X

Cotton/Spandex
adjustable strap
unitard.



Style 6584
“Getting Ripped Legging”
S/M, M/L

Stretch microfiber
legging with
multiple slits.

(Suggested Accessory)
Style 9534
“Zombie Top”
S/M, M/L



Style 9547
“Cougar-luscious Unitard”
Leopard Print
S/M, M/L

Animal print stretch panne velvet unitard with zipper front and long sleeves is a perfect piece to create many different costumes.
(1 piece set)

(Suggested Accessory) Style 9594 “Cougar-luscious Kit” Animal Print O/S
Style 9524 “Glam Cop Hat” Animal Print O/S

Style 9187

“Sequin Legging”
S, M, L, XL

Stretch knit front and back sequin legging. (1 piece set)



Style 7791

“Glam Short”
Black, Silver
S/M, M/L

Knit boy shorts with front and back sequins.



Style 6379

“Men’s Basic Pant”
Black, White
M, L, XL, XXL

Men’s basic pant with elastic waistband and pockets.



Style 7789

“What’s Shakin’ ”
S, M, L, XL

Knit boy shorts with multi layers of front and back fringe.



Style 8905

“Rainbow Roxie”

Multi

S/M, M/L

Foil printed stretch knit hot short with elastic waist. (1 piece set)



Style 8906

“Camo Roxie”

Green

S/M, M/L

Stretch knit hot short with elastic waist. (1 piece set)



Style 5229

Patty Panty”

Black

S/M, M/L

Stretch mesh ruffle panty. (1 piece set)



Style 4575

“Roxie Hot Short”

Black, Hot Pink, Red, White

S/M, M/L, 1X/2X, 3X/4X

Basic stretch knit hot short with elastic waist. (Hot Pink not available in Plus) (1 piece set)



Style 9551

“French Petticoat”
Black, Red, White
O/S

French petticoat with opaque satin yoke has layers of polka dot and solid organza. (1 piece set)



Style 9550

“Rainbow Tutu”
Multi
O/S

Rainbow sparkle tutu with elastic waist and satin bow.



Style 8964

“Fairytale Petticoat”
Black, White
O/S

Multi layered sheer mesh petticoat with high-low hemline, satin ribbon detail edging and back bow. (1 piece set)



Style 7846

“Light-Up Tutu”

Black, White

O/S

Light-up tutu interlaced with fiber optic lights with hidden pocket for on/off switch. Batteries and instructions included.



Style 4582

“Ursula Petticoat”

Black, White

O/S

Multi layer tulle petticoat with three lace ruffles.

Style 7007

“Tutu Petticoat”

Black, White

O/S

Multi layered tulle tutu petticoat with elastic band.



Style 4578

“Angel Petticoat”

Black, Red, White

O/S

Single layer tulle petticoat with three lace ruffles.

Style 9516

"Dripping Rubies Headpiece"

O/S

Magnificent gold headpiece dripping in rubies and gold coins.



Style 9515

"Shimmer Rhinestone Headpiece"

O/S

Golden headpiece with cascading rhinestones and adjustable back.



Style 9520

"Glittering Rhinestone Headpiece"

O/S

Exquisite rhinestone headpiece has clips on either side for attaching to hair.



Style 9523

"Shimmering Gold Coin Crown"

O/S

Gold metal crown with coins.



Style 9542

“Elf Princess Kit”

O/S

Elf Princess kit includes latex elf ears and golden adjustable headpiece. (2 piece set)



Style 9522

“Rose Petal Crown”

O/S

Medieval rose petal crown.



Style 9518

“Snake Crown”

O/S

Beautiful Cleopatra headpiece with snake and golden beads has an adjustable back.



Style 9514

“Flapper Headpiece”

O/S

Black stretch sequin headpiece with 1920’s appliqué and beading.



Style 9562

"Raving Zebra Hood"
O/S

Zebra printed neon pink and black panne velvet hood with faux fur trim and matching pom poms. (Wig not included) (1 piece set)



Style 9561

"Neon Cat"
O/S

Animal printed bright green faux fur hood with black faux fur trim has matching pom poms.



Style 8894

"Kandi Kid Wig"
Multi
O/S

Bright multi-color light-up cyber locks with bow trim with hidden pocket with on/off switch. Batteries and instructions included. (Blue wig not included) (1 piece set)



Style 9563

"Electric Bear Hood"
O/S

Light-up bright pink and green furry bear hood has pink furry pom poms and a hidden pocket with on/off switch, batteries and instructions. Lights up as bright green color. (Wig not included) (1 piece set)



Style 9524

“Glam Cop Hat”

Leopard Print

O/S

Velvet leopard printed hat with royal appliqué.
(1 piece set)



Style 9525

“Glam Cop Hat”

Pink

O/S

Shiny pink vinyl police hat with badge.
(1 piece set)



Style 9489

“So Bad Wig”

Red/Black

O/S

Light-up red and black synthetic wig with pigtails has a hidden pocket with an on/off switch. Batteries and instructions included.
(1 piece set)



Style 9529

“Special Ops Helmet”

O/S

Men’s adjustable tactical helmet
(Face mask and sunglasses not included)
(1 piece set)



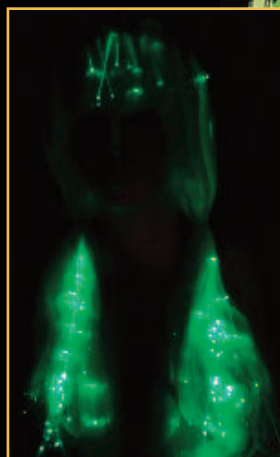
Style 9191

"Light-Up Long Wig"

Green

O/S

Light-up long green synthetic wig with hidden pocket with on/off switch. Batteries and instructions included. (Hair bow, jewelry and top not included) (1 piece set)

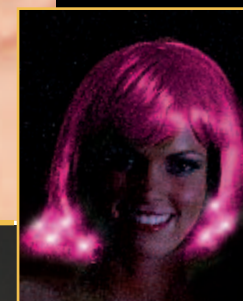
**Style 8898**

"Light-up Pixie Wig"

Green, Pink, Silver

O/S

Light-up synthetic hair wig in bob cut with hidden pocket with on/off switch. Batteries and instructions included. (1 piece set)

**Style 8349**

"Light-Up Blue Wig"

O/S

Light-up blue wig interlaced with innovative fiber optic lights and hidden pocket with on/off switch. Batteries and instructions included. (1 piece set)



Style 8314

“Light-Up Afro Wig”

Brown

O/S

Light-up afro wig interlaced with innovative fiber optic lights and hidden pocket with on/off switch. Batteries and instructions included. (1 piece set)



Style 8965

“Rocker Wig”

Brown

O/S

Light-up brown mullet style synthetic wig with hidden pocket for on/off switch. Batteries and instructions included. (1 piece set)



Style 7840

“Light-Up Rainbow Wig”

O/S

Light-up multi colored synthetic hair wig interlaced with innovative fiber optic lights and hidden pocket with on/off switch. Batteries and instructions included. (1 piece set)



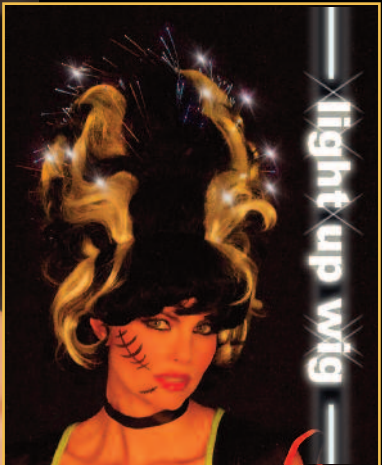
Style 8896

“Frankie Wig”

Black/White

O/S

Light-up black/white synthetic hair wig in Frankenstein cut with hidden pocket with on/off switch. Batteries and instructions included. (1 piece set)





Style 9555

Diagonally striped furry boot covers.

"Monster Love Boot Cover"

Black/Fuchsia/White

O/S



Style 9556

"Party Monster Boot Cover"

Rainbow Multi

O/S

Tie-dye furry boot covers.



Style 9612

"Boot Topper"

Red/Black

O/S

Reversible red/black boot toppers with back closure that are perfect to change a plain boot into a pirate, fire fighter, warrior or police boot.



Style 9192

“Rainbow Boot Covers”

Multi

O/S

Bright rainbow
furry boot covers.



Style 9193

“Boot Covers”

Neon Pink

O/S

Furry boot covers.



Style 9195

“Rainbow Daisy
Thigh High Socks”

Multi

O/S

Bright rainbow
knit thigh highs
with daisy detail.



Style 8978

“Neon Fishnet Thigh Highs”

Neon Pink

O/S

Stretch knit large
hole fishnet thigh
highs with closed toe
and wide back seam
detail.



Style 9264

“Harlequin Thigh High”
O/S

Black and white harlequin diamond pattern thigh highs.



Style 7030

“Sheer Thigh High”
Black, White
O/S, O/S Queen

Sheer thigh high with stay up silicone lace top.
85% Nylon
15% Spandex



Style 7034

“Fishnet Pantyhose”
Black
O/S

Fishnet pantyhose with back seam.
100% Nylon



Style 7031

“Sheer Thigh High”
Black, Red, White
O/S

Sheer thigh high with back seam.
100% Nylon



Style 7819
“Dominique Glove”
Black
O/S

Shiny stretch knit opera length glove.



Style 7794
“Galaxy Glove”
Gold, Silver
O/S

Metallic opera length gloves.



Style 5218
“Luna Glove”
Black, White
O/S

Stretch satin opera length gloves.



Style 9517
“Fingerless Gloves”
Black
O/S

Shiny black stretch long fingerless gloves.



Style 9554
“Spider Gloves”
Black
O/S

Long black stretch knit gloves with jagged silver foil printed spider web mesh.



costumes

plus



Style 9477X

"Little Red"

S, M, L, XL, 1X/2X, 3X/4X

Beautifully detailed fairytale dress includes underwire foam cups with pleated ruffles, embroidered heart trim, and lace-trimmed apron. Includes full length hooded satin cape. (Basket, thigh highs and satin gloves not included) (2 piece Set)



Style 9429X

“The Bad Witch”

S, M, L, XL, 1X/2X, 3X/4X

Black velvet dress with large hook and eye front trim, corset styling and a full spider lace skirt with attached petticoat. Includes spider lace gauntlet gloves and spider lace hat with buckle. (Necklace and thigh highs not included)
(3 piece Set)



Style 9496X

“Double-Edged Diva”

S, M, L, XL, 1X/2X, 3X/4X

Black stretch knit snap front dress has ruffle detailing and attached cape. Includes hat, mask, and waist corset. (Sword and pantyhose not included)
(4 Piece Set)



Style 9461X

“Sorcery & Seduction”

S, M, L, XL, 1X/2X, 3X/4X

Purple velvet dress with silver star and moon print, silver sequin trim detailing, silver lamé hood, and a high-low hemline. Includes waist sash with tassels. (Magic wand not included)
(2 piece Set)



Style 9422X
 "Killing Me Softly"
 Black and red velvet Victorian styled dress with high-low hemline has an exquisite sequined, embroidered neckline piece, vampire collar and sheer black chiffon sleeves. (Jewelry and pantyhose not included) (1 piece set) S, M, L, XL, 1X/2X, 3X/4X



Style 8867X
 "Treasure Pleasure"
 S, M, L, XL, 1X/2X, 3X/4X
 Pirate dress with attached black velvet scroll printed vest, red lace peasant style top with layered bell sleeves and attached high-low hemline petticoat. Pirate hat included. (Jewelry, sword, pantyhose and bow boot toppers not included) (2 piece set)

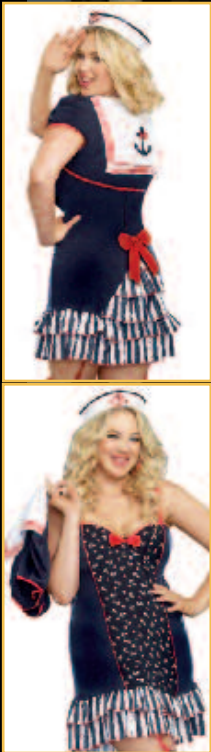


Style 8757X
 "Precious Booty"
 S, M, L, XL, 1X/2X, 3X/4X
 Black off-the-shoulder peasant dress with sheer sleeves, ruffled skirt and red bodice with black lace overlay. Includes pirate hat and belt with skull buckle. (Jewelry, sword, pantyhose and bow boot toppers not included) (3 piece set)

Style 9480X

“Ships Ahoy”
S, M, L, XL, 1X/2X, 3X/4X

Navy stretch knit pin-up styled dress with anchor print center, striped ruffled hem, layered ruffle back with bow detail and sweetheart neckline. Includes shrug with sailor collar, removable/adjustable garters and sailor hat with sequin anchor appliqué (3 piece set)



Style 5985X

“Makin’ Waves”
S, M, L, XL, 1X/2X, 3X/4X

Stretch knit dress with lightly padded underwire cups, contrast navy piping and gold foil bows on neckline and gold foil bow hem trim with printed anchor accents. Includes matching long sleeved shrug with foil star detail and sailor hat with anchor and gold foil bow. (3 piece set)



Style 8816X

“Dirty Cop Officer Anita Bribe”
S, M, L, XL, 1X/2X, 3X/4X

Black bengaline stretch knit dress with belt and police patches on shoulders. Costume includes police hat with badge pin, “Officer Anita Bribe” name plate and removable police badge. (Sunglasses, handcuffs, fingerless gloves, pantyhose and baton not included) (5 piece set)



Style 4005X

“Corrupt Cop”
S, M, L, 1X/2X, 3X/4X

Snap front dress with attached vinyl boned waist corset and neck collar. Includes hat, faux razor blade necklace, removable name badge, belt, handcuffs and an evidence bag which contains a faux needle and mini plastic bag. (Sunglasses and cash not included) (9 piece set)



Style 9504X

"Hospital Hottie"

S, M, L, XL, 1X/2X, 3X/4X

Nurse uniform has red ruffle detail and medical cross screen prints. Includes nurse hat, belt, and stocking topper bow pins. (Thigh highs and stocking clips not included) (4 piece set)



Style 9446X

"Burning Hot"

S, M, L, XL, 1X/2X, 3X/4X

Sexy suspender style red dress has Fire Department patches and front zippers that can be unzipped to make side slits. Includes reflective tape garter with rope, belt and fire fighter hat. (Boot toppers not included) (5 piece set)



Style 8211X

"Maid To Order"

S, M, L, XL, 1X/2X, 3X/4X

Ruffled pinafore apron with vintage Parisian print of polka dots and attached to black knit dress with sheer sleeves and large back bow. Includes removable/adjustable garters with bows, headpiece and feather duster. (Thigh highs not included) (3 piece set)



Style 9492X

"Happy New Beer!"

S, M, L, XL, 1X/2X, 3X/4X

Blue satin and velvet dress with authentic Bavarian embroidery design. Includes ruffled apron with bow and hair bows. (Beer mug, thigh highs and stocking clips not included) (3 piece set)





Style 9407X

"Scandalous Sword Warrior"

S, M, L, XL, 1X/2X, 3X/4X

Black velvet dress with high-low hemline, silver sequin waistline and hem trim, embellished and embroidered Royal Lion silver crest and attached long red chiffon sash. Includes rhinestone headpiece and silver lamé armbands. (Sword not included)
(3 piece set)



One shoulder dress embellished with sequins, jewels and embroidery. Jeweled crown and gold armbands included.
(3 piece set)

Style 8814X

"Queen of De Nile"

S, M, L, XL, 1X/2X, 3X/4X



Purple velvet embroidered and sequined gown with satin lined Renaissance sleeves and high-low hem. Gown is trimmed with gold sequins throughout. Velvet and gold headpiece with veil included. (2 piece set)

Style 8815X

"Queen of Thrones"

S, M, L, XL, 1X/2X, 3X/4X



Style 8861X

"Goddess of Love Aphrodite"

S, M, L, XL, 1X/2X, 3X/4X

Goddess dress with gold sequined embroidery and gold trim. The strategically placed zipper across skirt hemline allows the dress to go from ankle length to short and sexy. Once unzipped, the bottom of the dress can be worn as a cape. Rhinestone headpiece and arm bands included. (3 piece set)



Style 8123X

Golden Gladiator"

S, M, L, XL, 1X/2X, 3X/4X

Crinkled foil lamé dress with elaborate sequin and stud adorned warrior neckline appliqué and attached sheer chiffon cape. Includes faux vinyl studded waist corset with boning, dagger and Roman trim headpiece. (3 piece set)



Silver novelty sequin dress with exquisite 1920's look neckline piece and sequin fringe bottom. Includes stretch silver sequin headpiece with white ostrich feather. (Jewelry, boa, satin gloves and cigarette holder not included)
(2 piece set)

Style 9458X

"Life's a Party"

S, M, L, XL, 1X/2X, 3X/4X



Style 8812X

"Dames Like Us"

S, M, L, XL, 1X/2X, 3X/4X

20's style dress with reversible black/red dangling paillettes and black beaded neckline. Stretch sequin headpiece with ostrich feather included. (Jewelry, boa, cigarette holder, gloves and pantyhose not included)
(2 piece set)



Style 8217X

"Can-Can in Paris"

S, M, L, XL, 1X/2X, 3X/4X

Corset style dress with lightly padded underwire cups embellished with sequin and satin trim and attached multi layered ruffle skirt with back bustle. Includes adjustable/removable garters, mini hat and choker. (Thigh highs and gloves not included)
(3 piece set)



Style 5877X
“Pocahottie”
S, M, L, XL, 1X/2X, 3X/4X

Faux suede dress with intricate beaded neckline and layered fringe hem. Includes matching beaded headpiece with feathers.
(2 piece set)



Style 8216X
“Giddy Up!”
S, M, L, XL, 1X/2X, 3X/4X

Western style ultra suede cowgirl dress with hook & eye front closure, star grommets, fringe and lace-up detailing. Includes cowboy hat, neck scarf and pin.
(Rope not included)
(4 piece set)



Style 8198X
“Hot On The Trail”
S, M, L, XL, 1X/2X, 3X/4X
Native American inspired ultra suede fringed dress with beaded neckline detail. Includes colorfully beaded belt and headpiece.
(Jewelry not included) (3 piece set)



Dress with faux fur front inset has a contrast ruffle front and tiered ruffle back. Includes brightly colored striped faux fur monster hood with 3-dimensional eyes with lashes and eye shadow, heart printed horns, large teeth and heart antennae. (Wig and thigh highs not included) (2 piece set)

Style 9481X

"Monster Love"

S, M, L, XL, 1X/2X, 3X/4X



Style 8864X

"Groovy Baby"

S, M, L, XL, 1X/2X, 3X/4X

Hot pink dress with beaded fringe hemline and multi colored sequin appliques. Includes matching headband. (Jewelry not included) (2 piece set)



Style 8158X

"Go Go Gorgeous"

S, M, L, XL, 1X/2X, 3X/4X

Stretch knit retro pattern A-line Go Go dancer dress has bell shaped long sleeves and unique shaped neckline. Includes matching retro glasses, earrings, headband and faux vinyl daisy belt. (5 piece set)

Style 8793X

“Panda Bear Baby”

S, M, L, XL, 1X/2X, 3X/4X

Zipper front stretch velvet dress with faux fur trimmed hood, panda bear face and pom pom ties. Includes matching paw print mittens, faux fur trimmed boot covers and attached tail. (3 piece set)

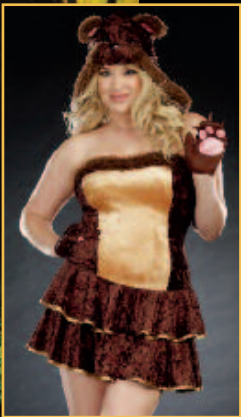


Style 8783X

“Bear Hugs”

S, M, L, XL, 1X/2X, 3X/4X

Stretch velvet dress with double ruffle hemline, faux fur neckline detail and bear tail. Includes separate hooded jacket with teddy bear face, mittens with paw print, removable/adjustable shoulder straps and matching faux fur boot covers. (5 piece set)



Style 8760X

“Bear Hugs”

S, M, L, XL, 1X/2X, 3X/4X

Leopard print stretch crush velvet hooded dress with fur trim and removable tail. Includes boot covers. (3 piece set)



Style 7497X

“Big Bad Sexy Wolf”

S, M, L, XL, 1X/2X, 3X/4X

Zipper front stretch crushed velvet dress with faux fur trimmed hood with pom pom ties, attached ears and tail. Includes faux fur trimmed boot covers. (2 piece set)



Reversible

Style 6452X

"Trouble at School"

S, M, L, XL, 1X/2X, 3X/4X

Reversible plaid Schoolgirl/Teacher pinstripe skirt with kilt pin, button front jacket and stretch knit tie front top. Includes apple pin, "Teacher Miss Ivana Youngman" name badge, hair bows and eye glasses. (Thigh highs not included) (8 piece set)



Style 8912X

"Flapper"

Black, Red

S, M, L, XL,
1X/2X, 3X/4X

Dress with fringe on the front and back with adjustable shoulder straps.

(Jewelry, headpiece, satin gloves, boa, cigarette holder and pantyhose not included) (1 piece set)

(Shown With)
Style 9514
"Flapper
Headpiece"
Black
O/S

Style 3760X

"Boxer Girl"

S, M, L, 1X/2X, 3X/4X

Stretch knit underwire camisole and matching skirt with shirring details. Includes matching robe with sash tie and boxing gloves. (5 piece set)



Style 0072X

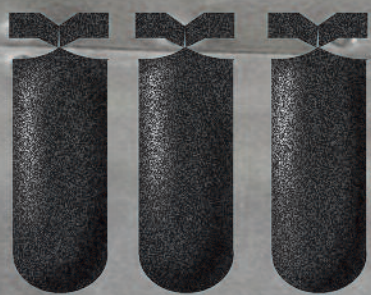
"Basic Unitard"

Black

S/M, M/L,
1X/2X, 3X/4X

Cotton/Spandex
adjustable strap
unitard.





Dreamgirl



Lady Cat (Cat Fish Club) 製作の ebook形式のカタログは、

<http://www.ebookcat.net>

にまとめています。多数のeBookカタログをご用意していますので、是非、ご利用ください。

The images and graphics in this catalogue [or CD] are the copyright-protected work of Dreamgirl International. Any use or reproduction without the express written consent of Dreamgirl International is strictly prohibited. Violators will be prosecuted to the fullest extent of the law.

Dreamgirl

COPYRIGHT © MMXIV