

カタログ番号 : LDG2013\_COS

Dreamgirl®



**Lady Cat**  
**ハッピーコスチューム**  
by Cat Fish Club



スマートフォンからは



<http://smart.ladycat.com>



PCからは

**ハッピーコスチューム**  
<http://www.happycostume.com>



携帯からは

**Cat Fish Mini**  
<http://catfishmini.com>

2013/2014 COSTUME COLLECTION



# Dreamgirl Couples

Styles 8861 & 8860







(Female Costume)  
**Style 8755**

“One Hot Knight”

S, M, L, XL

Silver and black metallic dress is adorned with sequined appliqué on the front bodice. The strategically placed zipper across skirt hemline allows the dress to go from ankle length to short and sexy. Once unzipped, the bottom of the dress can be worn as a cape. Headpiece and wrist gauntlets are included. (3 piece set)

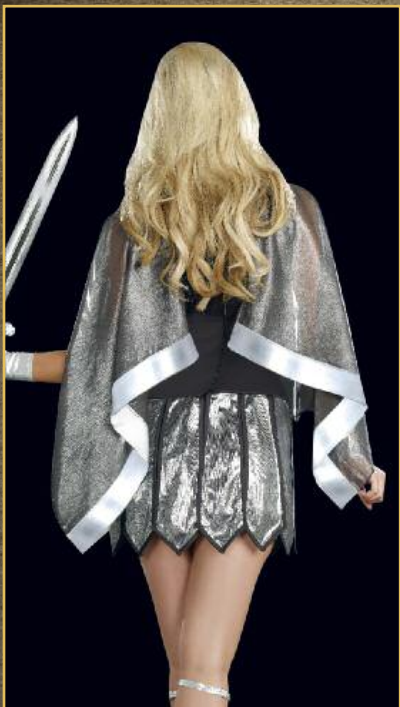
(Male Costume)  
**Style 8754**

“One Hot Knight”

M, L, XL, XXL

Black warrior tunic has an ornate warrior crest and silver detailing. (Sword and pants not included) (1 piece set)

(Shown with)  
Style 6379  
“Men’s Basic Pant”  
Black, Navy, White  
M, L, XL, XXL  
Men’s basic pant with elastic waistband and pockets.



*Going to battle just wouldn't be right, if your opponent looked like this hot knight.*

*The women of his kingdom knew they would never be bored, because this hot knight, knew what to do with his long sword.*



All the women had such fun,  
when they went to war against  
301.

She was more than willing to do  
her duty, but no one wanted to  
battle with this elegant beauty.

(Female Costume)  
**Style 8752**

"Bring It"

S, M, L, XL

Jewel encrusted black  
dress has lightly  
padded underwire cups  
and an attached red  
cape. Adjustable  
headpiece included.  
(Sword not included)  
(2 piece set)

(Male Costume)  
**Style 8750**

"301"

M, L, XL, XXL

Silver and black latex  
vest with warrior  
detailing and  
adjustable back. Red  
satin cape and warrior  
skirt included.  
(Sword not included)  
(3 piece set)





(Female Costume)  
**Style 8814**

"Queen of De Nile"

S, M, L, XL

One shoulder dress embellished with sequins, jewels and embroidery. Jeweled crown and gold arm bands included. (3 piece set)

(Male Costume)  
**Style 8839**

"Caesar"

M, L, XL, XXL

Ultrasuede printed tunic with attached cape and belt. Gold leaf headpiece included. (Sword not included) (2 piece set)

*Cleopatra knew from the start, that this mighty warrior would win her heart.*

*This radiant beauty will captivate you with her smile, she's the hottest thing on the Nile.*





Every inch of this mighty God is simply heavenly!

This ethereal beauty seems to have dropped from above, she is Aphrodite, the goddess of love!

Cleopatra could not resist this pharaoh king's kiss...

She likes to strut for King Tut!



**Style 8860**

"He's a God!"

M, L, XL, XXL

White tunic with gold satin attached cape and matching trim. Gold leaf headpiece, removable belt and wrist cuffs included. (4 piece set)

**Style 8861** Goddess of Love, Aphrodite"

S, M, L, XL, 1X/2X, 3X/4X



Goddess dress with gold sequined embroidery and trim. The strategically placed zipper across skirt hemline allows the dress to go from ankle length to short and sexy. Once unzipped, the bottom of the dress can be worn as a cape. Rhinestone headpiece and gold armbands included. (4 piece set)

**Style 8941**

"Pharaoh King"

M, L, XL, XXL

Men's tunic with elastic waist and jeweled collar. Includes matching belt with hieroglyphic details, headpiece and two wrist cuffs. (4 piece set)

**Style 8126**

"Naughty on the Nile"

S, M, L, XL, 1X/2X, 3X/4X

Holographic golden prism stretch microfiber dress with keyhole jeweled neckline and adjustable length hemline. Includes belt with hieroglyphic details and adjustable beaded headpiece with Asp detail. (3 piece set)



(Female Costume)  
**Style 8797**

"Warrior Maiden"

S, M, L, XL

Stretch knit dress with lightly padded underwire cups, embroidered trim neckline, adjustable straps and studded pelted skirt. Includes two matching arm bands, two wrist gauntlets and headpiece. (Dagger not included) (4 piece set)

(Male Costume)  
**Style 8799**

"Torture Me"

M, L, XL, XXL

Men's stretch knit tunic with elastic waist, adjustable 3 buckle belt and studded pelted details. Includes one wrist band with adjustable buckle and inflatable spiked mace ball. (4 piece set)

*Many a warrior she did  
delight in her castle late at  
night!*

*His torture tool is really big...*





(Female Costume)  
**Style 6422**

"Babe-A-Lonian Warrior Queen"

S, M, L, XL, 1X/2X, 3X/4X

Metallic brown stretch knit dress has exquisite sequined appliqué with bead detail and attached chiffon cape. Metallic gold foil detailing on waistband, along hem of skirt sections and on gauntlets. Includes headpiece with bead detail. (4 piece set)



(Male Costume)  
**Style 6554**

"Babe-A-Lonian Warrior King"

M, L, XL, XXL

Metallic brown stretch knit tunic with gold foil appliqué crest and trim detail with attached cape. Includes sword. (2 piece set)



(Female Costume)  
**Style 8209**  
"Cleo"

S, M, L, XL

Exquisite sequin gown with gold pleated satin skirt and Egyptian designed sequin trim detail. Attached gold pleated cape has four attached Egyptian designed sequined arm bands. Includes headpiece with cascading rhinestones. (2 piece set)

(Male Costume)  
**Style 8210**

"Julius Seize Her"

M, L, XL, XXL

Gloss stretch knit warrior tunic has gold trim detail. Includes gold cape, embellished belt, gold leaf headpiece, wrist gauntlets and sword. (Pants not included) (6 piece set)

(Female Costume)  
**Style 8123**

"Golden Gladiator"

S, M, L, XL, 1X/2X, 3X/4X

Crinkled foil lamé dress with elaborate sequin and stud adorned warrior neckline appliqué and attached sheer chiffon cape. Includes faux vinyl studded waist corset with boning, dagger and Roman trim headpiece. (3 piece set)



(Male Costume)  
**Style 8124**

"Marcus Abonius"

M, L, XL, XXL

Men's tunic with attached cape, embellished neckline, and scalloped studded detailing along waist and hem. Includes Roman warrior hat with faux fur trim. (Sword not included) (2 piece set)



(Female Costume)  
**Style 8122**

"Viking Warrior"

S, M, L, XL

Faux suede tunic style dress with adjustable halter neckline has faux vinyl and studded trim, rings, detachable faux fur pelt trim and detachable cape. Includes headband with horns and matching boot covers. (Sword not included) (4 piece set)

(Male Costume)  
**Style 8175**

"Viking Warrior"

M, L, XL, XXL

Faux suede men's tunic has shirred waist, faux vinyl studded trim with rings, faux fur pelts and detachable cape. Includes Viking warrior helmet with horns and matching boot covers. (Sword not included) (4 piece set)



(Female Costume)  
**Style 8848**

“Royally Yours”

S, M, L, XL

Red velvet and gold satin dress with sequin embellished lace neckline and high-low hemline. Jeweled crown included. (Necklace not included) (2 piece set)

(Male Costume)  
**Style 8844**

“Royally Yours”

M, L, XL, XXL

Red and black tunic with metallic appliques and gold trim. Crown and belt included. (Sword not included) (3 piece set)

(Shown with)  
Style 6379  
“Men’s Basic Pant”  
Black, Navy, White  
M, L, XL, XXL  
Men’s basic pant with  
elastic waistband and  
pockets.



*Dripping with gold and rubies too, this beautiful queen always knows what to do.*

*This handsome king is a great ruler indeed. He satisfies the women in his kingdom when they are in need.*





*In love with this pirate, the wenches did fall, after he made his booty call.*

*Her precious booty was a pirate's delight, on her ship late at night.*

(Female Costume)  
**Style 8757**

"Precious Booty"

S, M, L, XL

Black off-the-shoulder peasant dress with sheer sleeves, ruffled satin skirt and red bodice with black lace overlay. Includes pirate's hat and belt with skull buckle. (Pantyhose not included) (3 piece set)

(Shown with)

Style 7034

Black

O/S

Fishnet pantyhose with back seam.



(Male Costume)  
**Style 8774**

"Looking for Booty"

M, L, XL, XXL

Black pirate's top with heat transfer metal stud skull. Black faux leather vest, red waist sash and headpiece included. (Pants and sword not included) (4 piece set)

(Shown with)  
Style 6379

"Men's Basic Pant"  
Black, Navy, White  
M, L, XL, XXL

Men's basic pant with elastic waistband and pockets.





(Female Costume)  
**Style 8778**  
"Dead Sexy"  
S, M, L, XL

---

Black dress with attached red waist corset, tiered satin skirt and collared cape. Lace choker with vampire bite detail and lace gloves included. (Earrings not included) (3 piece set)

(Male Costume)  
**Style 8765**  
"Dead Sexy"  
M, L, XL, XXL

---

Black velvet gothic vampire shirt with ruffled detailing, red vampire collar and large cross appliqué on the back of shirt. (1 piece set)

(Shown with)  
Style 6379  
"Men's Basic Pant"  
Black, Navy, White  
M, L, XL, XXL  
Men's basic pant with elastic waistband and pockets.



*This naughty Vampire comes to women in their dreams, he sucks their necks and makes them scream!*

*This exquisite beauty is a tempting delight, but get to close and she might take a bite!*





*This freak of scientific fiction  
will create some friction!*

*This sexy creature could never  
be drab, he was the hottest thing  
to ever hit the slab.*

(Female Costume)  
**Style 8836**

"Frankie"

S, M, L, XL

Stretch knit dress with  
glossy faux vinyl  
attached waist corset and  
adjustable lace-up detail.  
Jagged edge skirt is  
accented with  
Frankenstein stitch  
details and adjustable  
shoulder straps.  
Matching long jacket  
with padded sleeve  
detail, choker, thigh high  
stockings with  
Frankenstein stitching  
details and matching  
wrist gauntlets included.  
(Wig not included)  
(5 piece set)

(Shown with)  
Style 8896  
"Frankie Wig"  
O/S

Black and white light-up  
wig with hidden pocket for  
on/off switch.

(Male Costume)  
**Style 8879**

"Frankencutie"

M, L, XL, XXL

Black jacket and tank  
top with green  
faux tears and tattered  
detailing. Latex  
headpiece with  
scar details included.  
(Pants not included)  
(3 piece set)

(Shown with)  
Style 6379

"Men's Basic Pant"  
Black, Navy, White  
M, L, XL, XXL  
Men's basic pant with  
elastic waistband and  
pockets.





(Female Costume)  
**Style 8790**  
"Lone Cowgirl"  
S, M, L, XL

Stretch knit pantsuit with adjustable halter neckline with functioning lace-up front detail. Includes cowboy hat, neck scarf, pair of French wrist cuffs, removable Sheriff's badge and gun holster belt with adjustable rhinestone horseshoe buckle. (7 piece set)

(Male Costume)  
**Style 8789**  
"Lone Cowboy"  
M, L, XL, XXL

Woven knit button down jacket with star details. Includes Sheriff's badge, neck scarf, mask, cowboy hat and adjustable rhinestone gun holster. (Shirt and pants not included) (6 piece set)

(Shown with)  
Style 6379  
"Men's Basic Pant"  
Black, Navy, White  
M, L, XL, XXL  
Men's basic pant with elastic waistband and pockets.



*Ride off into the sunset with this masked Ranger....*

*Is that a pistol you are packing or are you just happy to see me?*







**Style 5877**

"Pocahottie"

S, M, L, XL,  
1X/2X, 3X/4X



Faux suede dress with intricate beaded neckline and layered fringe hem. Includes matching beaded headpiece with feathers. (2 piece set)

**Style 9189**

"Chief Long Arrow"

M, L, XL, XXL

Native American styled ultra suede fringed shirt and pants with feather headdress. (3 piece set)



(Female Costume)  
**Style 8196**

"Reservation Royalty"

S, M, L, XL

Ultra suede dress has Native American beaded appliqué and fringe detail. Includes a headpiece with feathers and matching beaded appliqué. (2 piece set)

(Male Costume)  
**Style 8197**

"Chief Wansum Tail"

M, L, XL, XXL

Native American styled ultra suede fringed shirt and pants with feather headdress. (3 piece set)



(Female Costume)  
**Style 8203**

"Let's Go Clubbin' "

S, M, L, XL

Ultra suede cave woman dress with attached genuine shell teeth neckline trim, waist sash, bone hair barrette and fur boot covers. (4 piece set)

(Male Costume)  
**Style 8204**

"Let's Go Clubbin' "

M, L, XL, XXL

Ultra suede cave man tunic also includes a head scarf, waist sash and arm band. (Club not included) (4 piece set)



(Female Costume)  
**Style 8780**  
"Nurse Anita B. Naughty"  
S, M, L, XL

Convertible nurse costume with removable zip front top, red bra top, pleated skirt, garters, nurse's cap and stethoscope.  
(Thigh highs not included)  
(6 piece set)

(Male Costume)  
**Style 8873**  
"Dr. Oliver Clothesoff"  
M, L, XL, XXL

White lab coat with front and back screenprints. Includes "Trust Me I'm a Doctor" pin, stethoscope and "Dr. Oliver Clothesoff" name plate.  
(Pants not included)  
(4 piece set)

(Shown with)  
Style 6379  
"Men's Basic Pant"  
Black, Navy, White  
M, L, XL, XXL  
Men's basic pant with elastic waistband and pockets.



*This naughty nurse wants to take care of you. Some tender loving care, always seems to do.*

*Trust me, I'm a doctor.*





*Corruption was his middle name.  
Banging heads was his game.*

*Even fugitives on the run,  
thought getting arrested by this  
sexy cop, would be kind of fun!*

(Female Costume)  
**Style 8816**

"Dirty Cop Officer Anita Bribe"

S, M, L, XL

Black bengaline stretch knit dress with belt and police patches on shoulders. Costume includes police hat with badge pin, "Officer Anita Bribe" name plate and removable police badge. (Handcuffs not included)  
(6 piece set)

(Male Costume)  
**Style 8817**

"Dirty Cop Officer Ed Banger"

M, L, XL, XXL

Black sleeveless collared shirt with front pockets, police patch and removable neck tie. Includes police hat with badge pin, "Officer Ed Banger" name plate, removable police badge and arm band. (Sunglasses, handcuffs, baton and pants not included)  
(6 piece set)



(Female Costume)  
**Style 8856**  
"HO"  
S, M, L, XL

Long stretch velour jacket with oversized fur collar and cuffs. Matching dress with metallic gold piping and faux fur trimmed hemline. Includes matching hat and faux fur boot covers.  
(Pantyhose not included)  
(4 piece set)

(Shown with)  
Style 7034  
Black  
O/S  
Fishnet pantyhose with  
back seam.



(Male Costume)  
**Style 8855**  
"Big Pimpin'"  
M, L, XL, XXL

Stretch velour jacket has oversized faux fur collar, cuffs and button front closure. Includes matching pants and hat.  
(Pimp cup and cane not included)  
(3 piece set)

*Ho better have  
my money....!*

*She's quick on  
her feet while workin' the  
street!*





*This rockstar will  
take you far!*

*Rock out with  
your c\*&% out!*

(Female Costume)  
**Style 8858**

"Rockstar"

S, M, L, XL

Women's rocker costume includes a zebra printed stretch knit 3/4 sleeve shirt, faux vinyl vest with stud trim and stretch knit ciré zebra leggings. Matching head tie, one leg tie, one wrist cuff, studded rocker belt and inflatable faux guitar included. (8 piece set)

(Male Costume)  
**Style 8857**

"Rockstar"

M, L, XL, XXL

Men's rocker costume includes a zebra printed stretch knit sleeveless shirt, faux vinyl vest with stud trim, and stretch knit ciré zebra leggings. Matching head tie, one leg tie and one wrist cuff included. (Light-up accessory wig not included) (6 piece set)

(Shown with)  
Style 8965  
"Rocker Wig"  
O/S

Light-up brown mullet style synthetic wig with hidden pocket for on/off switch.







#### Style 5236

"Mile High Captain Hugh Jorgan"

M, L, XL, XXL

Button front jacket with satin and gold trim details. Includes pilot hat, collar with necktie and removable "Mile High Pilot Hugh Jorgan" name badge. (Pants not included) (4 piece set)

#### Style 8192

Mile High Pilot "Sheila B. Bangin' "

S, M, L, XL

Button front long sleeved pilot's dress with gold braid detail. Includes pilot's hat and removable "Mile High Pilot" badge. (3 piece set)



#### Style 6550

"Smokin' Hot Fireman"

M, L, XL, XXL

Buckle front jacket with reflective tape trim detail. Includes knit tank top with Fire Department heat transfer and fire hat. (Pants not included) (3 piece set)

#### Style 6524

"Smokin' Hot Fire Fighter"

S, M, L, XL,

Black gloss microfiber two-way zip front dress with reflective tape trim detail and "Smokin'" knit bra top. Includes reflective tape belt, fire hat and matching boot toppers. (5 piece set)





**Style 8190** Black and white pinstripe double breasted gangster suit. Includes dickie, machine gun screen-printed tie, carnation pin and hat. (Shirt not included) (6 piece set)

**"Gangsta"**

M, L, XL, XXL

**Style 8188** Gangster pinstripe knit dress with sexy peak-a-boo scalloped lace neckline and matching shorts. Includes hat with feather, belt, carnation pin and choker. (Thigh highs and stocking toppers not included) (6 piece set)

**"Mobster Boss"**

S, M, L, XL, 1X/2X, 3X/4X



**Style 8177** Black velvet vampire waistcoat with contrast satin lapels and cuffs. Front lapels have gothic embroidered satin appliqué crosses. Coat back is adorned with an embroidered fiber optic light-up cross. Includes a white satin ruffled dickie, instruction sheet, hidden pocket for on/off switch and batteries. (Shirt and pants not included) (2 piece set)

**"Just One Bite"**

M, L, XL, XXL



**Style 8176** Velvet vampire dress with stretch lace and flocked satin with gothic crosses on lightly padded underwire cups and stand-up collar. Back features lace-up detail to accentuate curves. (Jewelry not included) (1 piece set)

**"Just One Bite"**

S, M, L, XL





# Haunts

# Hot

Styles 8836 & 8879







*This exquisite beauty is a tempting delight, but get to close and she might take a bite!*



**Style 8778**  
"Dead Sexy"  
S, M, L, XL  
Black dress with attached red waist corset, tiered satin skirt and collared cape. Lace choker with vampire bite detail and lace gloves included.  
(Earrings not included)  
(3 piece set)

*This naughty Vampire comes to women in their dreams, he sucks their necks and makes them scream!*



Black velvet gothic vampire shirt with ruffled detailing, red vampire collar and large cross appliqué on the back of shirt.  
(1 piece set)  
(Shown with) Style 6379 "Men's Basic Pant"  
Black, Navy, White M, L, XL, XXL

**Style 8765**  
"Dead Sexy"  
M, L, XL, XXL



*This freak of scientific fiction  
will create some friction!*

*This sexy creature could never  
be drab, he was the hottest thing  
to ever hit the slab.*



**Style 8836** Stretch knit dress with glossy faux vinyl attached waist corset and adjustable lace-up detail. Jagged edge skirt is accented with Frankenstein stitch details and adjustable shoulder straps. Matching long jacket with padded sleeve detail, choker, thigh high stockings with Frankenstein stitching details and matching wrist gauntlets included. (Wig not included) (5 piece set)

"Frankencutie"  
S, M, L, XL

(Shown with) Style 8896 "Frankie Wig" O/S



Black jacket and tank top with green faux tears and tattered detailing. Latex headpiece with scar details included. (Pants not included) (3 piece set)

(Shown with) Style 6379 "Men's Basic Pant"  
Black, Navy, White M, L, XL, XXL

**Style 8879**  
"Frankie"  
M, L, XL, XXL



Style 8177

“Just One Bite”

M, L, XL, XXL

Black velvet vampire waistcoat with contrast satin lapels and cuffs. Front lapels have gothic embroidered satin appliqué crosses. Coat back is adorned with an embroidered fiber optic light up cross. Includes a white satin ruffled dickie, instruction sheet, hidden pocket for on/off switch and batteries. (Shirt and pants not included) (2 piece set)



(Shown with)  
Style 6379  
“Men’s Basic Pant”  
Black, Navy, White  
M, L, XL, XXL  
Men’s basic pant.



Style 8176

“Just One Bite”

S, M, L, XL

Velvet vampire dress with stretch lace and flocked satin with gothic crosses on lightly padded underwire cups and stand-up collar. Back features lace-up detail to accentuate curves. (Jewelry not included) (1 piece set)



Style 7681

“Bella Vamp”

S, M, L, XL

Long sleeve ruffle hem knit dress and satin waist cincher with contrasting ribbon. Includes hat and lined cape with high wing collar. (Fence nets not included) (3 piece set)



Style 8178

“La Vamp Fatale”

S, M, L, XL

Corset styled dress with back bustle and buckle front detailing. Includes adjustable/removable vampire collar, tattoo printed shrug and choker with chain detail. (Pantyhose not included) (4 piece set)



(Shown with)  
Style 7034  
Black  
O/S  
Fishnet pantyhose  
with back seam.





**Style 8801**

"Bloodsucking Beauty"

S, M, L, XL

*This bloodsucking  
beauty is always  
on night duty.*

Fully boned sequin  
corset dress with  
scalloped edge neckline,  
adjustable front lace-up  
panel and multilayered  
skirt with sequin  
trimmed hemline.  
Includes black/red  
reversible cape.  
(Thigh highs, jewelry,  
petticoat and gloves not  
included)  
(2 piece set)

**Style 4578**

"Angel Petticoat"  
Black, Red, White  
O/S

Single layer tulle petticoat  
with three lace ruffles.

**Style 5218**

"Luna Glove"  
Black, White  
O/S

Stretch satin opera  
length gloves.





**Style 8820**

“Mummy Dearest”

S, M, L, XL

White tattered dress with sexy plunging neckline. Headpiece and bandage sleeves included. (3 piece set)

*This sexy creature might get awfully chummy, but get too close and you'll be crying for your mummy !*







light up costume

Stretch knit zip back pantsuit with innovative sound activated light-up pulsing heart and skeleton screen-printed details. Requires 2 AAA batteries. Includes matching dancing skeleton top hat and instruction sheet. (Batteries and cane not included) (2 piece set)



#### Style 8340

"Dancing Skeleton Diva"

XS, S, M, L



#### Style 8413

"Goin' Outta My Mind"

S, M, L, XL

Blood splattered stretch Bengaline two way zip front dress with elongated straight jacket sleeves and adjustable buckles with uneven hemline. Includes matching hat with "Mental Ward" detail. faux blood and latex wounds. (3 piece set)



#### Style 8404

"Ghoul Scout"

S, M, L, XL

Bloody uniform dress comes with belt and sash with spooky patches. Includes knife, beret and blue ribbon pin. (Hair ribbons and knee socks not included) (6 piece set)



**Style 8843**

“Sexy Sorceress”

S, M, L, XL

Convertible stretch knit dress with long chiffon sleeves and attached boned waist corset. The strategically placed zipper across skirt hemline allows the dress to go from ankle length to short and sexy. Once unzipped, the bottom of the dress can be worn as a cape. Includes matching wizard hat and wand. (3 piece set)



Convertible

*She will show you  
her wizardly delight every night.*





**Style 8810**

"Black Magic"

S, M, L, XL

*You might think this dazzling beauty is swell, until she whips up a potion and puts you under her spell.*

Black velvet sequin dress with cutout neckline and gauntlet sleeves. Matching velvet witch hat with sequin and organza brim included. (Jewelry and pantyhose not included) (2 piece set)





**Style 8113**  
 “Starry Night Witch”  
 S, M, L, XL, 1X/2X, 3X/4X

Easy to wear tube style dress features exquisite cutting-edge reversible sequins which can change from black to silver, tutu tulle skirt with star printed detail and matching separate jacket. Includes witch hat with sheer veil and silver star wand. (4 piece set)



Reversible Sequins



**Style 5991**  
 “Fang Bangin’ Fun Vamp”  
 S, M, L, XL, 1X/2X, 3X/4X

Stretch knit dress with contrast burgundy scalloped edge neckline. Includes iridescent satin black/burgundy stand-up collar, removable cape with scalloped edge, adjustable/removable straps, belt with pentagram and chain details, choker and vampire fangs (not shown). (5 piece set)



**Style 8234**  
 “Hell with That!”  
 S, M, L, XL

Red and black sequin dress has front flame detailing. Includes choker, sequin horn headband and removable tail. (Pantyhose not included) (4 piece set)

(Shown with) Style 7034 Black O/S Fishnet pantyhose with back seam.





battle

of the Warriors

Style 8752





**Style 8752**

“Bring It”  
S, M, L, XL

Jewel encrusted black dress with lightly padded underwire cups and an attached red cape. Adjustable headpiece included. (Sword not included) (2 piece set)

*The other warriors did tattle,  
about all the naughty things she  
did in battle.*





Going to battle just wouldn't be right, if your opponent looked like this hot knight.



Convertible

Style 8755

"One Hot Knight"

S, M, L, XL

Silver and black metallic dress is adorned with sequined appliqué on the front bodice. The strategically placed zipper across skirt hemline allows the dress to go from ankle length to short and sexy. Once unzipped, the bottom of the dress can be worn as a cape. Headpiece and wrist gauntlets are included. (3 piece set)





**Style 8798**

“Battle Bound Beauty”

S, M, L, XL

Stretch metallic ciré and velvet dress with custom molded latex spiked shoulder pads, criss-cross straps with pendant and jewel adorned belt. Includes matching arm bands. (Sword not included) (2 piece set)

*This battle bound beauty is always on duty.*







*Out into battle this beauty would  
roam, and then all of the warriors  
would follow her back home.*

**Style 8971**

"Warrior of Darkness"

S, M, L, XL

Stretch knit black reptile  
imprinted dress with  
glossy stretch vinyl  
accents and front zipper.  
Includes wrist gauntlets  
and adjustable jeweled  
headpiece.  
(Sword not included)  
(3 piece set)



*The women of his kingdom knew they would never be bored, because this hot knight knew what to do with his long sword.*



**Style 8754**

“One Hot Knight”  
M, L, XL, XXL

Black warrior tunic has an ornate warrior crest and silver detailing.  
(Sword, shield and pants not included) (1 piece set)  
  
(Shown with) Style 6379 “Men’s Basic Pant”  
Black, Navy, White M, L, XL, XXL

*All the women had such fun, when they went to war against 301.*



Silver and black latex vest with warrior detailing and adjustable back. Red satin cape and warrior skirt included.  
(Sword and shield not included) (3 piece set)

**Style 8750**

“301”  
M, L, XL, XXL



**Style 8759**

"Warrior Princess"

S, M, L, XL, 1X/2X, 3X/4X

*She was more than willing to do her duty, but no one wanted to battle with this elegant beauty.*

Red and gold convertible dress with jeweled neckline. The strategically placed zipper across skirt hemline allows the dress to go from ankle length to short and sexy. Once unzipped, the bottom of the dress can be worn as a cape. Headpiece included. (Sword not included) (2 piece set)



**Convertible**





**Style 8122**

“Viking Warrior”

S, M, L, XL

Faux suede tunic style dress with adjustable halter neckline, faux vinyl studded trim and rings, detachable faux fur pelt trim and detachable cape. Includes headband with horns and matching boot covers. (Sword not included) (4 piece set)



**Style 8175**

“Viking Warrior”

M, L, XL, XXL

Faux suede men's tunic with shirred waist, faux vinyl studded trim and rings, faux fur pelts and detachable cape. Includes Viking helmet with horns and matching boot covers. (Sword not included) (4 piece set)



*This warrior always has time for fun, even though there are battles to be won.*



**Style 8181**

“Remember the Trojans”

S, M, L, XL



Convertible corset style dress with lightly padded underwire cups, adjustable shoulder straps and attached jeweled belt. The strategically placed zipper across skirt hemline allows the dress to go from ankle length to short and sexy. Once unzipped, the bottom of the dress can be worn as a cape. Includes wrist gauntlets, sword and headpiece. (4 piece set)





*"Off with his head," she said!*

Hooded tunic style stretch knit dress with deep V-neckline accented with studded straps and skirt pelts. Includes 3-buckle adjustable belt, executioner mask and one wrist cuff with adjustable buckle. (Weapon not included) (4 piece set)

#### Style 8840

"Executie"

S, M, L, XL



#### Style 8799

"Torture Me"

M, L, XL, XXL

Men's stretch knit tunic with elastic waist, adjustable 3 buckle belt and studded pelted details. Includes one wristband with adjustable buckle and inflatable spiked mace ball. (4 piece set)



#### Style 8797

"Warrior Maiden"

S, M, L, XL

Stretch knit dress with lightly padded underwire cups, embroidered trim neckline, adjustable straps and studded pelted skirt. Includes two matching arm bands, two wrist gauntlets and headpiece. (Dagger not included) (4 piece set)



**Style 6422**

“Babe-A-Lonian  
Warrior Queen”

S, M, L, XL, 1X/2X, 3X/4X

Metallic brown stretch knit dress has exquisite sequined appliqué with bead detail and attached chiffon cape. Metallic gold foil detailing on waistband, along hem of skirt sections and on gauntlets. Includes headpiece with bead detail. (4 piece set)



**Style 8123**

“Golden Gladiator”

S, M, L, XL, 1X/2X, 3X/4X

Crinkled foil lamé dress with elaborate sequin and stud adorned warrior neckline appliqué and attached sheer chiffon cape. Includes faux vinyl studded waist corset with boning, dagger and Roman trim headpiece. (3 piece set)



**Style 6554**

“Babe-A-Lonian  
Warrior King”

M, L, XL, XXL

Metallic brown stretch knit tunic with gold foil appliqué crest and trim detail with attached cape. Includes sword. (2 piece set)



**Style 8124**

“Marcus Abonius”

M, L, XL, XXL

Men's tunic with attached cape, embellished neckline, and scalloped studded detailing along waist and hem. Includes magnificent Roman warrior hat with faux fur trim. (Sword not included) (2 piece set)





best of the

West



Style 8871



**Style 8871**

“Queen of the Tribe”

S, M, L, XL

Fringed ultra suede dress with side tie detail and Native American beaded appliqué. Includes matching beaded headpiece. (2 piece set)

*Braves would come from miles around, to see if this tribal queen could be found.*





**Style 8753**

"Chief Hottiebody"

S, M, L, XL

Black fringed ultra suede dress with Native American beaded appliqué. Includes matching beaded headpiece. (Spear not included) (2 piece set)

*She's captured the heart of many a brave, and then turned them into her love slave.*





**Style 8796**  
"Tippin' Teepees"  
S, M, L, XL, 1X/2X, 3X/4X

Versatile stretch faux suede dress with Native American style brocade ribbon details. Neckline can be worn 4 ways. Includes matching boot covers and feather headdress. (Tomahawk not included) (3 piece set)



Convertible



*Don't come knockin' if her teepee is rockin'!*





The other braves thought it was wrong, that the chief was blessed with an arrow so long.



**Style 9189**

"Chief Long Arrow"

M, L, XL, XXL

Native American styled ultra suede fringed shirt and pants with feather headdress. (3 piece set)

How about a little tribal trouble?



Faux suede dress with intricate beaded neckline and layered fringe hem. Includes matching beaded headpiece with feathers. (2 piece set)

**Style 5877**

"Pocahottie"

S, M, L, XL, 1X/2X, 3X/4X



**Style 8196**

“Reservation Royalty”

S, M, L, XL

Ultra suede dress with Native American beaded appliqué and fringe detail. Includes headpiece with feathers and matching beaded appliqué. (2 piece set)



**Style 7587**

“Tribal Trouble”

S, M, L, XL

Stretch knit faux suede dress with intricate bead detailing at waist and full fringe hemline on dress. Includes matching headpiece. (2 piece set)



**Style 8198**

“Hot On The Trail”

S, M, L, XL, 1X/2X, 3X/4X

Native American inspired ultra suede fringed dress with beaded neckline detail. Includes colorfully beaded belt and headpiece. (Jewelry not included) (3 piece set)



**Style 5076**

“Tribal Princess”

XS, S, M, L

Stretch faux suede dress with feather and turquoise bead trim lace-up neckline and fringe hem. Includes matching feather headpiece, armband and tomahawk. (4 piece set)





*Is that a pistol you are packing or are you just happy to see me?*



**Style 8790**

"Lone Cowgirl"  
S, M, L, XL

Stretch knit pantsuit with adjustable halter neckline with functioning lace-up front detail. Includes cowboy hat, neck scarf, pair of French wrist cuffs, removable Sheriff's badge and gun holster belt with adjustable rhinestone horseshoe buckle. (7 piece set)

*Ride off into the sunset with this masked cowboy....*



Woven knit button down jacket with star details. Includes Sheriff's badge, neck scarf, mask, cowboy hat and adjustable rhinestone gun holster. (Shirt and pants not included) (6 piece set)

(Shown with) Style 6379 "Men's Basic Pant"  
Black, Navy, White M, L, XL, XXL

**Style 8789**

"Lone Cowboy"  
M, L, XL, XXL



**Style 8751**

“Bangin’ Hot Cowgirl”

S, M, L, XL

Brown ultra suede chaps with attached belt in the front and heart shaped opening in the back with matching hot shorts. Animal print ultra suede fringed top with lightly padded underwire cups and halter ties. Cowboy hat included. (Rope not included) (4 piece set)

*In record speed those cowboys trot, to see this cowgirl that's bangin' hot!*







*Her gun isn't the  
only thing that is  
smoking!*

**Style 8785**

"Classy Cowgirl"

S, M, L, XL

Stretch faux suede dress with lightly padded underwire cups, retro peplum ruffle styling, feather and jewel adorned belt. Includes removable/adjustable shoulder straps, separate jacket with eyelet detail and matching cowboy hat. (4 piece set)





**Style 8756**

"Prairie Rose Cutie"

S, M, L, XL

Western styled black and red cowgirl dress with sequin rose patches and snap front details. Includes cowboy hat, neck scarf and fringed wrist cuffs. (4 piece set)

*This sexy cowgirl likes to show them what she's got. Some might say she's Hot to Trot!*





**Style 8779**

"Night Ranger"

S, M, L, XL

*This mysterious beauty has secrets to hide, apparently her horse isn't all she likes to ride.*

Black dress with silver sequin trim, ruffles and high-low hem. Includes white cowboy hat, mask, neck scarf, Sheriff's badge and waist cincher belt. (Rope not included) (5 piece set)







### Style 8216

"Giddy Up!"

S, M, L, XL, 1X/2X, 3X/4X

Western styled ultra suede cowgirl dress with hook & eye front closure, star grommets, fringe and lace-up detailing. Includes cowboy hat, neck scarf and pin.  
(Rope not included) (4 piece set)



### Style 4605

"Rhinestone Cowgirl"

S, M, L, 1X/2X, 3X/4X

Stretch knit western style snap front dress with rhinestone belt and hat. Includes silver lasso and bolo tie necklace.  
(5 piece set)



### Style 8197

"Chief Wansum Tail"

M, L, XL, XXL

Native American styled ultra suede fringed shirt and pants with feather headdress.  
(3 piece set)





# Heroes of Land and Sea

Style 8818



**Style 8818**

“Sailor Pin-up”

S, M, L, XL

Retro pin-up style sailor dress with front shirring and layered ruffled back. Includes matching sailor hat, striped thigh high stockings with anchors and removable/adjustable garters. (3 piece set)

*There's no place a sailor would rather be, then with this pin-up girl out at sea!*





**Style 8828**

"Anchors Away"

S, M, L, XL

Stretch bengaline dress with gold sequin bow details, box pleated skirt, gold bow stocking toppers and attached sailor collar. Includes matching hat with sequin bow detail. (Jewelry and thigh highs not included) (3 piece set)

(Shown with)  
Style 7031  
"Sheer Thigh High"  
Black, Red, White  
O/S  
Sheer thigh high with  
back seam.





**Style 8823**

“Cruise Control”

S, M, L, XL

Halter style sailor dress with lightly padded underwire cups, navy anchor print ruffled skirt with bow detail and attached petticoat. Sailor hat included. (2 piece set)

*Many a heart this sailor has stole, she simply puts her relationship on cruise control!*





Don't come a knockin'  
when this boats a  
rockin'!



Pin-up corset styled dress with flirty ruffled lightly padded underwire cups, metallic gold trim and gold sequin anchor appliqué. Matching shrug with sailor collar accented with metallic gold trim and sequin anchor appliqué. Includes sailor hat with sequin anchor. (Petticoat not included) (3 piece set)

#### Style 8186

"Rockin' the Boat"

S, M, L, XL,  
1X/2X, 3X/4X

(Shown with) Style 4582 "Ursula Petticoat" Black, White O/S

#### Style 5985

"Makin' Waves"

S, M, L, XL, 1X/2X, 3X/4X

Stretch knit dress with lightly padded underwire cups, contrast navy piping and gold foil bows on neckline and gold foil bow hem trim with printed anchor accents. Includes matching long sleeved shrug with foil star detail and sailor hat with anchor and gold foil bow. (3 piece set)



#### Style 7577

"Sailor Mine"

S, M, L, XL

Empire waist dress with snap down back, sailor collar and sequin anchor pockets. Includes matching boy shorts with anchor patch and sailor hat. (3 piece set)





**Style 8883**

“Major Trouble”

S, M, L, XL

Scoop neck stretch knit dress with pleated skirt, gold metallic stars and red trim. Includes separate jacket with military patches, removable/adjustable suspenders, belt, collar with attached neck tie, matching hat, pair of French cuffs and boot toppers. (8 piece set)

*When he saw she was so cute he just had to salute.*





**Style 8890**

"Fire Drill"

S, M, L, XL

Stretch knit dress with  
lightly padded  
underwire cups accented  
with neon reflective tape.  
Includes matching jacket,  
fireman hat and fire  
extinguisher purse.  
(4 piece set)

*Her fire drill will give  
you a thrill!*





**Style 8882**

"Rescue Me"

S, M, L, XL

Convertible dress with "Smokin'" screen print on back. May be worn as a dress or tied-up around the waist to reveal the flame screen printed shorts. Includes fireman hat with "Smokin' Hot Fire Dept." sticker and red belt. (4 piece set)

*She's the fire fighter that all men desire. Give her a chance and she'll light your fire.*





light up & sound effects



Two-way zipper front dress with fiber optic light-up "FIRE" with front and back screen print. Includes fire alarm device, that can be set off to make the perfect entrance. Fireman hat, hidden pocket for the on/off switch, batteries and instruction sheet are included. (Pantyhose not included) (3 piece set)

(Shown with) Style 7034 Black O/S Fishnet pantyhose with back seam.

**Style 8214**

"Burn Baby Burn"

S, M, L, XL



**Style 6550**

"Smokin' Hot Fireman"

M, L, XL, XXL

Buckle front jacket with reflective tape trim detail. Includes knit tank top with Fire Department heat transfer and fireman hat. (Pants not included) (3 piece set)

(Shown with)  
Style 6379  
"Men's Basic Pant"  
Black, Navy, White  
M, L, XL, XXL  
Men's basic pant with elastic waistband and pockets.



**Style 6524**

"Smokin' Hot Fire Fighter"

S, M, L, XL

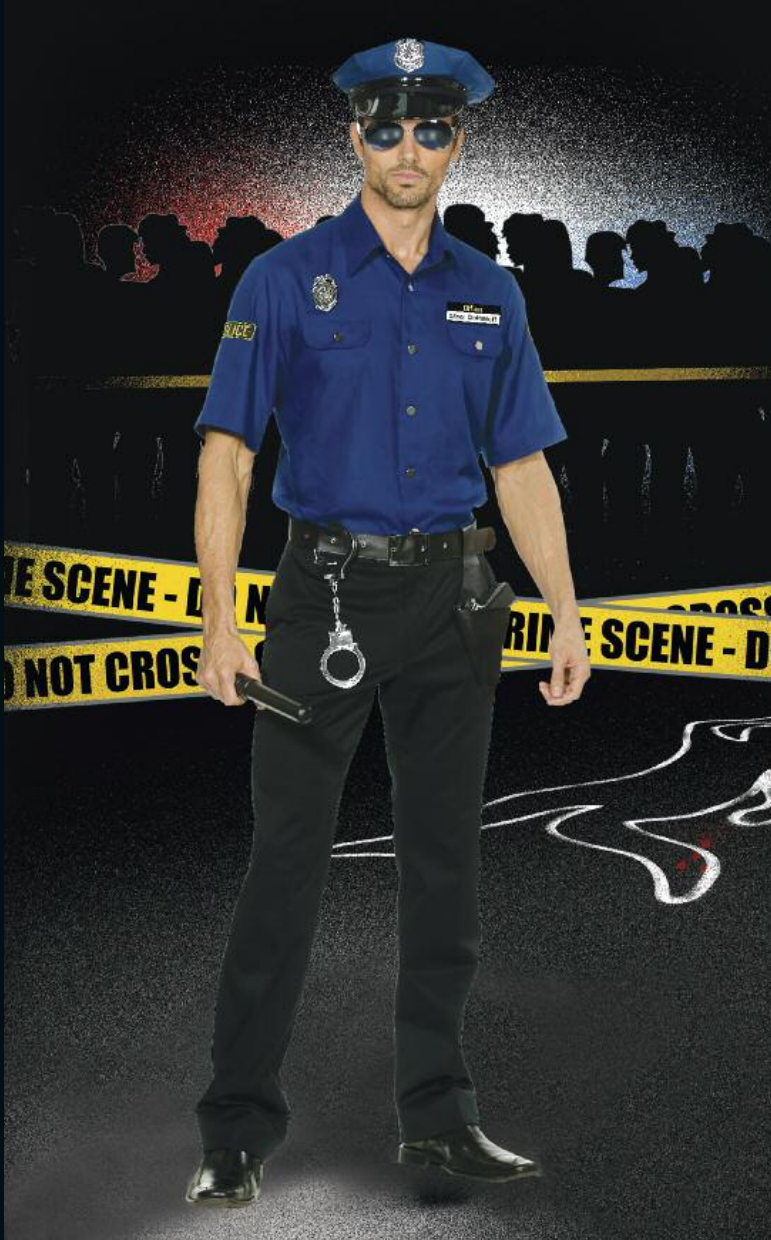
Black gloss microfiber two-way zip front dress with reflective tape trim detail and "Smokin'" knit bra top. Includes reflective tape belt, fireman hat and matching boot toppers. (5 piece set)



**Style 5150**  
“You’re Busted! Policeman”  
M, L, XL, XXL

Button front shirt with badge. Includes hat, removable “Officer Oliver Clothesoff” name badge, belt, handcuffs and baton.  
(Sunglasses and pants not included)  
(6 piece set)

(Shown with)  
Style 6379  
“Men’s Basic Pant”  
Black, Navy, White  
M, L, XL, XXL  
Men’s basic pant with elastic waistband and pockets.



**Style 7669**  
“Late Night Patrol”  
S, M, L, XL, 1X/2X, 3X/4X

Ruffle hem dress, waist cincher with belt and removable “Dreamgirl Police Dept.” badge. Includes hat, lace-up wrist cuffs and matching drawstring bag.  
(6 piece set)



**Style 5938**  
“FBI Agent Mia Babe”  
XS, S, M, L

Stretch knit snap front top with FBI and American flag heat transfer with zip off removable midriff section. Includes matching stretch knit skirt, “FBI: Fun Beautiful Intelligent” hat and flip wallet with badge.  
(Sunglasses not included) (5 piece set)



Convertible



The handprints that were found at the rear, made this case very clear.

**Style 8881**

"Get a Clue"

S, M, L, XL

Black police dress with shiny vinyl waist detail and belt. Dress has police patches and large hand screen prints on back. Bra top has "Police Line Do Not Cross" screen print. Includes belt and police hat. (Sunglasses, handcuffs and pantyhose are not included) (4 piece set)

(Shown with)  
Style 7034  
Black  
O/S

Fishnet pantyhose with back seam.





Even fugitives on the run, thought getting arrested by this sexy cop, would be kind of fun!



**Style 8816**  
“Dirty Cop Officer Anita Bribe”  
S, M, L, XL

Black bengaline stretch knit dress with belt and police patches on shoulders. Costume includes police hat with badge pin, “Officer Anita Bribe” name plate and removable police badge. (Sunglasses, handcuffs, pantyhose and baton not included) (5 piece set)

(Shown with) Style 7034 Black O/S Fishnet pantyhose with back seam.

Corruption was his middle name. Banging heads was his game.



Black sleeveless collared shirt with front pockets, police patch and removable neck tie. Includes police hat with badge pin, “Officer Ed Banger” name plate, removable police badge and arm band. (Sunglasses, handcuffs, baton and pants not included) (6 piece set)

**Style 8817**  
“Dirty Cop Officer Ed Banger”  
M, L, XL, XXL



Her frisk is never brisk...

PRINCIPAL

Stretch knit racer-back dress with sequin front panel and zip front closure. Includes faux vinyl belt, police hat, arm band with patch. (Sunglasses, baton and handcuffs not included) (4 piece set)





**Style 8219**  
“The Heat Is On”  
S, M, L, XL, 1X/2X, 3X/4X

Stretch knit dress has flashing LED red and blue police lights in the lightly padded underwire cups. Includes a police siren alarm on its phone, which with the press of a button, can be set off to make the perfect entrance. Police hat with badge, belt, hidden pocket for the on/off switch, batteries and instruction sheets are also included. (Handcuffs, sunglasses and baton not included) (4 piece set)



light up & sound effects



**Style 4005**  
“Corrupt Cop”  
S, M, L, 1X/2X, 3X/4X

Snap front dress with attached vinyl boned waist corset and neck collar. Includes hat, faux razor blade necklace, removable name badge, belt, handcuffs and an evidence bag which contains a faux needle and mini plastic bag. (Sunglasses and cash not included) (9 piece set)



Convertible



**Style 8142**

“Officer B. Naughty”

XS, S, M, L



Convertible bodysuit with poplin button front shirt, faux vinyl pocket detail, full length sleeves, adjustable tab and attached stretch knit snap-crotch panty. Can be worn without skirt for a naughty look. Includes matching stretch knit A-line skirt with sequin piping and neck tie, cop hat with police badge, separate faux vinyl waist corset with adjustable lace-up front and "Officer B. Naughty" badge. (Handcuffs, baton, sunglasses and pantyhose not included) (5 piece set)

(Shown with) Style 7034 Black O/S Fishnet pantyhose with back seam.



**Style 8866**

"Officer Sheila B. Naughty"

S, M, L, XL

*Even though they were going to  
be in a jail cell down town, no  
one ever minded her patting  
them down.*

Navy romper with  
police patches and  
2-way zip front skirt.  
Includes belt, police hat  
with badge, and  
"Officer Sheila B.  
Naughty" name plate.  
(Sunglasses, handcuffs  
and baton not  
included)  
(5 piece set)





**Style 8873**

“Dr. Oliver Clothesoff”  
M, L, XL, XXL

White lab coat with front and back screenprint. Includes “Trust Me I’m a Doctor” pin, stethoscope and “Dr. Oliver Clothesoff” name plate.  
(Pants not included)  
(4 piece set)

(Shown with)  
Style 6379  
“Men’s Basic Pant”  
Black, Navy, White  
M, L, XL, XXL  
Men’s basic pant with elastic waistband and pockets.



*Trust me, I'm a doctor.*





Convertible nurse costume with removable zip front top, red bra top, pleated skirt, garters, nurse cap, "Nurse Anita B. Naughty" name badge and stethoscope. (Thigh highs not included) (7 piece set)



Convertible

*This naughty nurse wants to take care of you. Some tender loving care, always seems to do.*





**Style 8792**

“Nurse Heartbreaker”

S, M, L, XL

Stretch bengaline nurse dress with keyhole heart neckline and heart button front details. Includes matching nurse hat on headband, stethoscope, belt, matching heart/cross thong and pasties with adhesive backing. (Thigh highs not included)  
(6 piece set)

(Shown With)  
Style 7031  
“Sheer Thigh High”  
Black, Red, White  
O/S  
Sheer thigh high with back seam.



*How about some love to make  
you feel better from this nurse  
heartbreaker....*







Nurse dress has a sexy low cut neckline with both front and back hem length adjustability. Ruffled back detail accentuates curves. Includes nurse hat, apron, "Nurse Juana B. Sedated" nameplate and stethoscope. (Thigh highs not included) (5 piece set)

**Style 8179**  
"Nurse Juana B. Sedated"  
S, M, L, XL, 1X/2X, 3X/4X



**Style 5860**  
"Nurse Juana B. Betta"  
S, M, L, XL, 1X/2X, 3X/4X

Snap front dress with ruffled hem. Includes belt, nurse hat, stethoscope and satin bow with cross stocking clips. (Thigh highs not included) (6 piece set)



(Shown with)  
Style 7031  
Black, Red, White  
O/S  
Sheer thigh high with back seam.



**Style 8100**  
"Nurse Knockout"  
S, M, L, XL

Retro styled stretch Bengaline dress with lightly padded underwire cups and peplum detail. Includes separate jacket with faux vinyl piping and cross detail, stethoscope, belt and nurse hat. Includes removable/adjustable shoulder straps and "Nurse Knockout" name badge. (Thigh highs not included) (6 piece set)



# through the Ages

Style 8815









*Dripping with gold and rubies too, this beautiful queen always knows what to do.*



**Style 8848**  
"Royally Yours" (Women's)  
S, M, L, XL

Red velvet and gold satin dress with sequin embellished lace neckline and high-low hemline. Jeweled crown included. (Necklace not included) (2 piece set)

*This handsome king is a great ruler indeed, he satisfies the women in his kingdom, when they are in need.*



Red and black tunic with metallic appliqués and gold trim.  
Crown and belt included.  
(Sword not included) (3 piece set)

(Shown with) Style 6379 "Men's Basic Pant"  
Black, Navy, White M, L, XL, XXL

**Style 8844**  
"Royally Yours" (Men's)  
M, L, XL, XXL



*She was a stunning beauty on her thrown, and when she went to her chambers, she was never alone!*

**Style 8815**

"Queen of Thrones"

S, M, L, XL, 1X/2X, 3X/4X

Purple velvet embroidered and sequined gown with satin lined Renaissance sleeves and high-low hem. Gown is trimmed with gold sequins throughout. Velvet and gold headpiece with veil included. (Jewelry not included) (2 piece set)





**Style 8865**

“Masquerade”

S, M, L, XL

Black velvet dress with  
flocked print, sequins  
and lace trim over  
magenta satin corset style  
front. Venetian style  
mask and black pearl  
headband included.  
(Jewelry and thigh highs  
not included)  
(3 piece set)

*Deeply in love they all did fall,  
when they danced with her at the  
Masquerade Ball.*

(Shown with)  
Style 7030  
Black, White  
O/S, O/S Queen  
Sheer thigh high with  
stay up silicone lace top.





*It's no fable, every dark Knight  
has sat at her round table.*



**Style 8128**

"Come To Camelot"

S, M, L, XL

Renaissance inspired full length crushed velvet gown with jeweled neckline, brocade trim and sexy front slit. Includes matching adjustable jeweled crown. (2 piece set)

*She'll have her cake and eat it too!*



Royal blue stretch velour dress with gold foil lamé print, gold underdress and ornate sleeves adorned with gold metallic thread lace. Includes matching leg garter, fan, choker, hat with feather and multi layer bustle. (Thigh highs and petticoat not included) (6 piece set)

**Style 8132**

"Royal Rendezvous"

S, M, L, XL



**Style 8811**

“Cleopatra”

S, M, L, XL

Black dress with gold foil trim, beautiful beaded neckline and attached turquoise cape. Matching beaded headpiece, attached beaded waist sash and gold adjustable arm cuffs included. (Wig and earrings not included) (3 piece set)

(Shown with)  
Style 8897  
“Cleopatra  
Light-Up Wig”  
Black bob style wig with  
fiber optic lights and  
hidden pocket for  
on/off switch.



*This bejeweled Queen of the Nile, dazzled them with her royal style.*





**Style 8839**

"Caesar"

M, L, XL, XXL

Suede fabric with gold print tunic has attached cape and belt. Gold leaf headpiece included. (Sword and shield not included) (2 piece set)

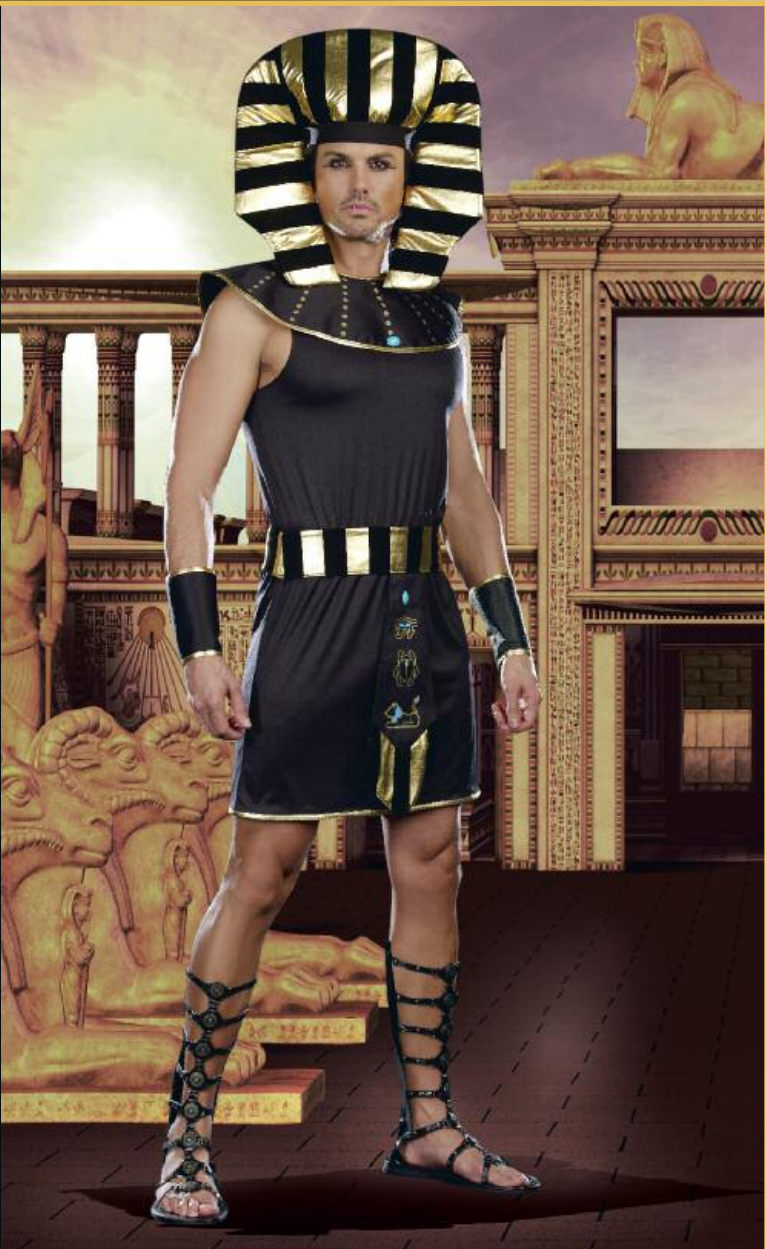


**Style 8941**

"Pharoah King"

M, L, XL, XXL

Men's tunic with elastic waist and jeweled collar. Includes matching belt with hieroglyphic details, headpiece and two wrist cuffs. (4 piece set)



*This radiant beauty will captivate you with her smile, she's the hottest thing on the Nile.*



One shoulder dress embellished with sequins, jewels and embroidery. Jeweled crown and gold arm bands included. (3 piece set)

**Style 8814**

"Queen of De Nile"

S, M, L, XL



*Tempted are many on the Nile, when this golden seductress flashes her smile.*



**Style 8209**

“Cleo”  
S, M, L, XL  
Exquisite sequin gown with gold pleated satin skirt and Egyptian designed sequin trim detail. Attached gold pleated cape has four attached Egyptian designed sequined arm bands. Includes headpiece with cascading rhinestones. (2 piece set)



**Style 8210**

“Julius Seize Her”  
M, L, XL, XXL

Gloss stretch knit warrior tunic has gold trim detail. Includes gold cape, embellished belt, gold leaf head piece, wrist gauntlets and sword. (Pants not included) (6 piece set)



**Style 8126**

“Naughty on the Nile”  
S, M, L, XL, 1X/2X, 3X/4X

Holographic golden prism stretch microfiber dress with keyhole jeweled neckline and adjustable length hemline. Includes belt with hieroglyphic details and adjustable beaded headpiece with Asp detail. (3 piece set)





**Style 8203**

"Let's Go Clubbin' "

S, M, L, XL

Ultra suede cave woman dress with attached shell teeth neckline, waist sash, bone hair barrette and faux fur boot covers. (Club not included) (4 piece set)

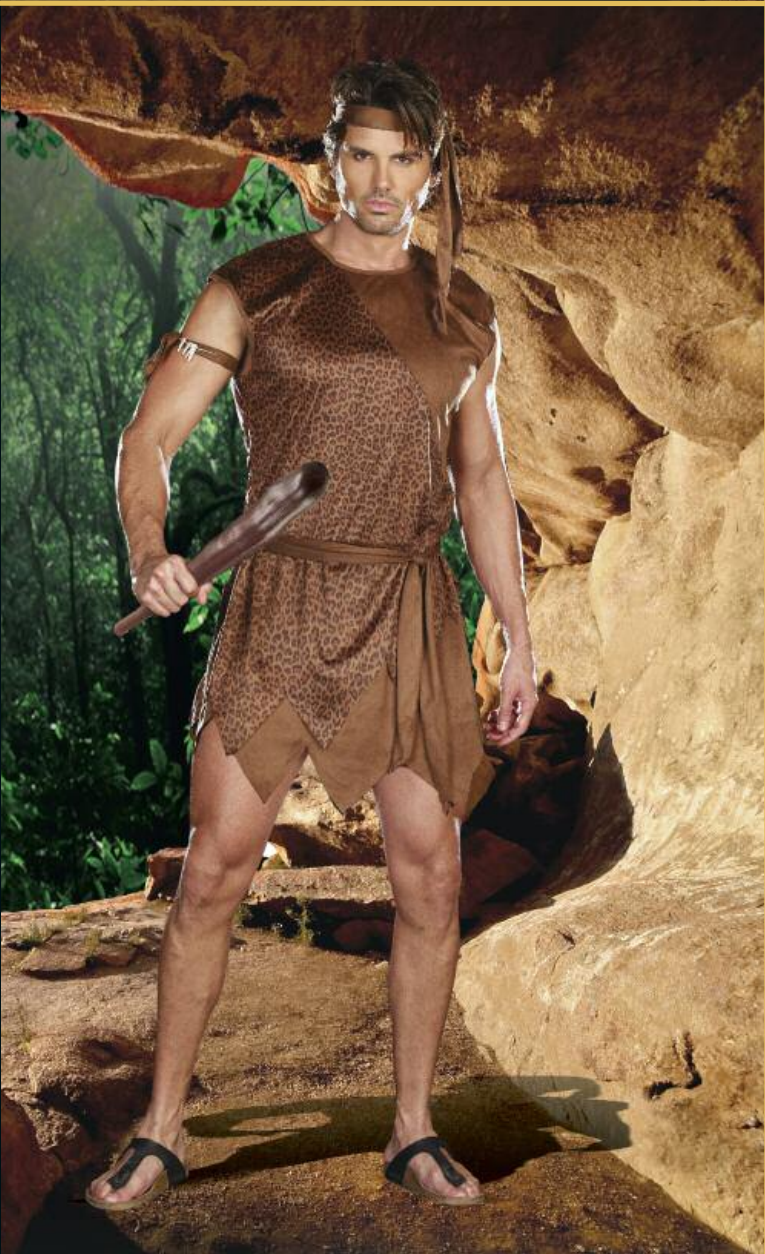


**Style 8204**

"Let's Go Clubbin' "

M, L, XL, XXL

Ultra suede cave man tunic also includes a head tie, waist sash and arm band. (Club not included) (4 piece set)



Take a taste of her forbidden fruit...



Sheer stretch shimmer floral pattern dress with nude color lining, snake shoulder strap and asymmetrical hemline. Includes matching headpiece, arm band and apple purse. (Jewelry not included) (4 piece set)

**Style 8862**

"Absolutely Eve"

S, M, L, XL



**Style 8864**

“Groovy Baby”

S, M, L, XL

Hot pink dress with beaded fringe hemline and multi colored sequin appliques. Includes matching headband. (Jewelry not included) (2 piece set)

*Shall we shag now, or shall we shag later?*





*She has it all under the disco ball!*



Retro styled dress with large hanging sequin paillettes on front and back. Includes faux vinyl hat and bracelet. (Glasses not included) (3 piece set)





*This Go Go Dancing beauty can dance all night, she knows how to make you feel just right!*



**Style 8875**

"Go Go Tonight"

S, M, L, XL

Silver and black sequin Go Go dancer dress with sequin peace sign appliqué. Hat included. (Jewelry not included) (2 piece set)

*She's the best dancin' queen on the disco scene.*



Stretch metallic lamé pantsuit with adjustable halter ties and lace-up front detail with attached peace sign belt and sequin print accents. Includes matching head tie. (Jewelry not included) (2 piece set)

**Style 9182**

"Dancin' Queen"

S, M, L, XL



*Ho better have my money....!*



**Style 8855**

“Big Pimpin’ ”

M, L, XL, XXL

Stretch velour jacket has oversized faux fur collar and button front closure. Includes matching pants and hat. (Pimp cup and cane not included) (3 piece set)

*She's quick on her feet while workin' the street!*



**Style 8856**

“Ho”

S, M, L, XL

Long stretch velour jacket with oversized fur collar and cuffs. Matching dress with metallic gold piping and faux fur trimmed hemline. Includes matching hat and faux fur boot covers. (Pantyhose not included) (4 piece set)

(Shown with) Style 7034 Black O/S



*This rockstar will take you far!*



**Style 8858**  
"Rockstar" (Female)  
S, M, L, XL

Women's rocker costume includes a zebra printed stretch knit 3/4 sleeve shirt, faux vinyl vest with stud trim and stretch knit ciré zebra leggings. Matching head tie, one leg tie, one wrist cuff, studded rocker belt and inflatable faux guitar included. (8 piece set)

*Rock out with your c\*&% out!*



Men's rocker costume includes a zebra printed stretch knit sleeveless shirt, faux vinyl vest with stud trim, and stretch knit ciré zebra leggings. Matching head tie, 1 leg tie and 1 wrist cuff. (Wig not included) (6 piece set)

(Shown with) Style 8965 "Rocker Wig" Brown O/S Light-up brown mullet style synthetic wig with hidden pocket for on/off switch.

**Style 8857**  
"Rockstar" (Male)  
M, L, XL, XXL



**Style 8230**

"Peace Out"

S, M, L, XL

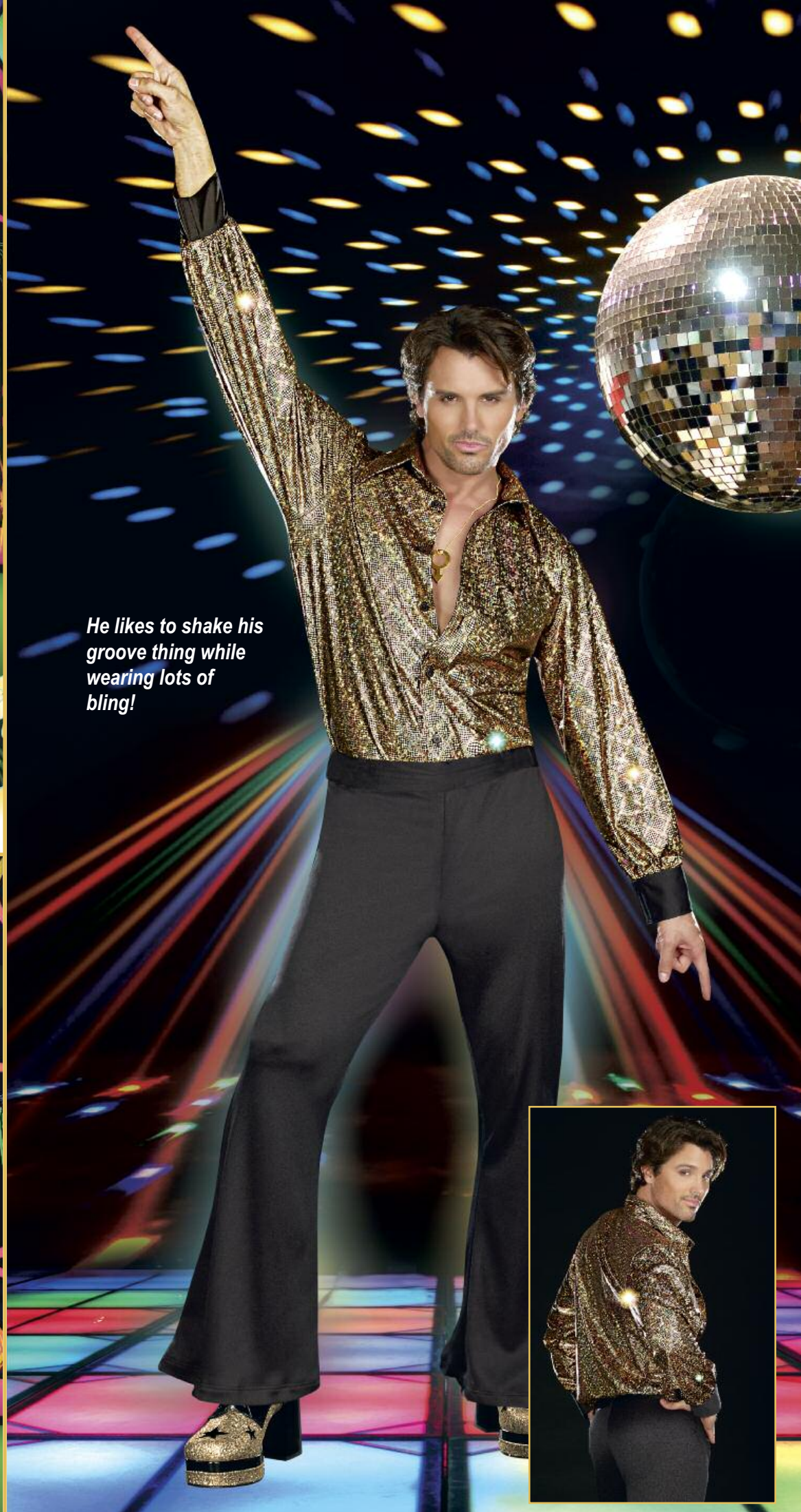
Black knit dress with LED light up peace sign and matching peace sign motif belt. Includes headband with multi colored beads and instruction sheet. Batteries included. (Sunglasses and jewelry not included) (3 piece set)

**Style 8158**

"Go Go Gorgeous"

S, M, L, XL, 1X/2X, 3X/4X

Stretch knit retro pattern A-line Go Go dancer dress has bell shaped long sleeves and unique shaped neckline. Includes matching retro glasses, earrings, headband and faux vinyl daisy belt. (5 piece set)



*He likes to shake his groove thing while wearing lots of bling!*



Disco inspired stunning holographic pattern button front shirt and stretch knit bell bottom pants. Includes gold male symbol necklace. (3 piece set)

**Style 8162**

"Stayin' Alive"

M, L, XL, XXL





and Dolls

guys

Styles 8190, 8775, 8812, 8776, 8831, 8813







**Style 8812**

“Dames Like Us”

S, M, L, XL, 1X/2X, 3X/4X

20’s style dress with reversible black/red dangling paillettes and black beaded neckline. Stretch sequin headpiece with ostrich feather included. (Jewelry, boa, cigarette holder, gloves and pantyhose not included) (2 piece set)



(Shown with)  
Style 7034  
Black  
O/S

Fishnet pantyhose  
with back seam.

Style 5218  
“Luna Glove”  
Black, White  
O/S

Stretch satin opera  
length glove.



*Why does everyone have to  
make such a fuss? They’re just  
jealous of dames like us!*





**Style 8813**

"Razzmatazz!"

S, M, L, XL

*Life was a party, and this she knew,  
shakin' on the dance floor and  
drinking bootleg gin too!*

Silver sequin with black full fringe dress accented with a retro 1920's inspired beaded neckline. Stretch sequin headpiece with ostrich feather included. (Jewelry, boa, cigarette holder, gloves and pantyhose not included) (2 piece set)

(Shown with)  
Style 7034  
Black  
O/S

Fishnet pantyhose with back seam.

Style 5218  
"Luna Glove"  
Black, White  
O/S

Stretch satin opera length glove.





**Style 8831**

“Bootleg Ginny”

S, M, L, XL

Art Deco inspired gold and black sequin dress with slimming black side insets and sequin fringe hemline. Stretch sequin headpiece with ostrich feather included. (Jewelry, boa, cigarette holder and pantyhose not included) (2 piece set)

(Shown with)  
Style 7034  
Black  
O/S  
Fishnet pantyhose  
with back seam.



*Bootleg Ginny loved to have fun, but when the feds came in, she was back on the run.*





*I know a spot where the gin is cold and  
the piano is hot... And all that Jazz.*

**Style 8832**

"Jazzy Jezebell"

S, M, L, XL

20's inspired sequin dress with keyhole front detail, gold beaded neckline, cluny lace and sequin fringe hemline.

Includes matching choker and stretch sequin headpiece with feather.

(Boa, cigarette holder and pantyhose not included)

(3 piece set)

(Shown with)

Style 7034

Black

O/S

Fishnet pantyhose with back seam.

Style 5218

"Luna Glove"

Black, White

O/S

Stretch satin opera length glove.





**Style 8847**

“Speakeasy Vixen”

S, M, L, XL

Silver fringed dress with shimmer metallic stretch ciré fabric bodice and empire waist bow detail. Includes choker and stretch sequin headpiece with feather. (Boa, cigarette holder, gloves and thigh highs not included) (3 piece set)

(Shown with)  
Style 5218  
“Luna Glove”  
Black, White  
O/S  
Stretch satin opera  
length gloves.



*She took on prohibition with ambition!*





Style 8184

"Flap Happy"  
S, M, L, XL, 1X/2X, 3X/4X

Silver satin dress with beaded 1920's inspired neckline detail. Layers of silver metallic fringe adorn both front and back. Includes sequined headpiece with feather, choker and cigarette holder. (Boa and gloves not included) (4 piece set)



(Shown with)  
Style 5218  
"Luna Glove"  
Black, White  
O/S  
Stretch satin  
opera glove.



Style 8401

"Ain't Misbehavin'"  
S, M, L, XL, 1X/2X, 3X/4X

Sequin 1920's inspired flapper dress with Art Deco styling has layered full fringe bottom. Includes stretch sequin headpiece with ostrich feather and cigarette holder. (Boa, pantyhose, gloves and jewelry not included) (3 piece set)



(Shown with)  
Style 7034 Black O/S  
Fishnet pantyhose  
Style 5218 "Luna  
Glove" Black, White  
O/S



Style 7566

"On the Fringe"  
S, M, L, XL

Tiered fringe flapper dress has fringe both front and back. V-neckline has exquisite sequined and embroidered rose trim. Includes stretch sequin headpiece with ostrich feather and cigarette holder. (3 piece set)



Style 8421

"Vaudeville Vixen"  
XS, S, M, L

Gold fringed dress with sequin bodice has an exquisite rhinestone trim. Includes head piece with ostrich feather, and a cigarette holder. (Feather boa, jewelry and gloves not included) (3 piece se

(Shown with)  
Style 5218  
"Luna Glove"  
Black, White  
O/S  
Stretch satin opera  
glove.





She shows off her pizzazz when she hears all that jazz.



**Style 7474**  
"Ruby Red Hot"  
S, M, L, XL

Stretch knit dress with tiered fringe and beaded neckline trim. Includes stretch sequin headband with rose detail, cigarette holder and removable/adjustable garter straps. (Gloves, boa, jewelry and thigh highs not included) (4 piece set)

(Shown with) Style 5218 "Luna Glove" Black, White O/S



**Style 6456**

"Toe Tappin' Flappa"  
XS, S, M, L, XL

Stretch knit strapless dress with drop waist, sequin fringe trim and removable/adjustable shoulder straps. Includes sequin choker and stretch sequin head piece with feather. (Gloves and cigarette holder not included) (4 piece set)

(Shown with)  
Style 5218  
"Luna Glove"  
Black, White  
O/S  
Stretch satin opera  
length gloves.



**Style 6457**

"All That Jazz Flapper"  
S, M, L, XL, 1X/2X, 3X/4X

Stretch knit dress with tiered fringe and beaded neckline. Includes stretch sequin headband with feather, choker and boa. (Pantyhose and gloves not included) (4 piece set)



(Shown with)  
Style 7034  
Black  
O/S  
Fishnet pantyhose  
with back seam.

Style 5218  
"Luna Glove"  
Black, White  
O/S  
Stretch satin opera  
length gloves.



**Style 8834**

"Smooth Criminal"

S, M, L, XL

*This sexy gangster is oh so smooth,  
she'll take all your money and then be  
back on the move.*

Men's jacket inspired  
white with black  
pinstripe double  
breasted dress.  
Includes satin neck tie  
with sequin dollar  
appliqué, red  
handkerchief, fedora  
hat with feather and red  
carnation pin.  
(Gloves not included)  
(4 piece set)





**Style 8819**

"Down n' Dirty"

S, M, L, XL

Stretch black and white  
pinstripe dress with  
attached suspenders.  
Satin neck tie with dollar  
sign appliqué, carnation  
pin, faux leather belt with  
studs and fedora  
included.  
(Thigh highs not  
included)  
(5 piece set)

*She wants to make you an offer you  
can't refuse, or you'll find yourself  
wearing cement shoes.*





Style 8190

"Gangsta"

M, L, XL, XXL

Black and white pinstripe double breasted gangster suit. Includes a dickie, machine gun screen-printed neck tie, carnation pin and hat. (Shirt not included) (6 piece set)



Style 8188

"Mobster Boss"

S, M, L, XL, 1X/2X, 3X/4X

Gangster pinstripe knit dress with sexy peak-a-boo scalloped lace neckline and matching shorts. Includes hat with feather, belt, carnation pin and choker. (Thigh highs and stocking toppers not included) (6 piece set)

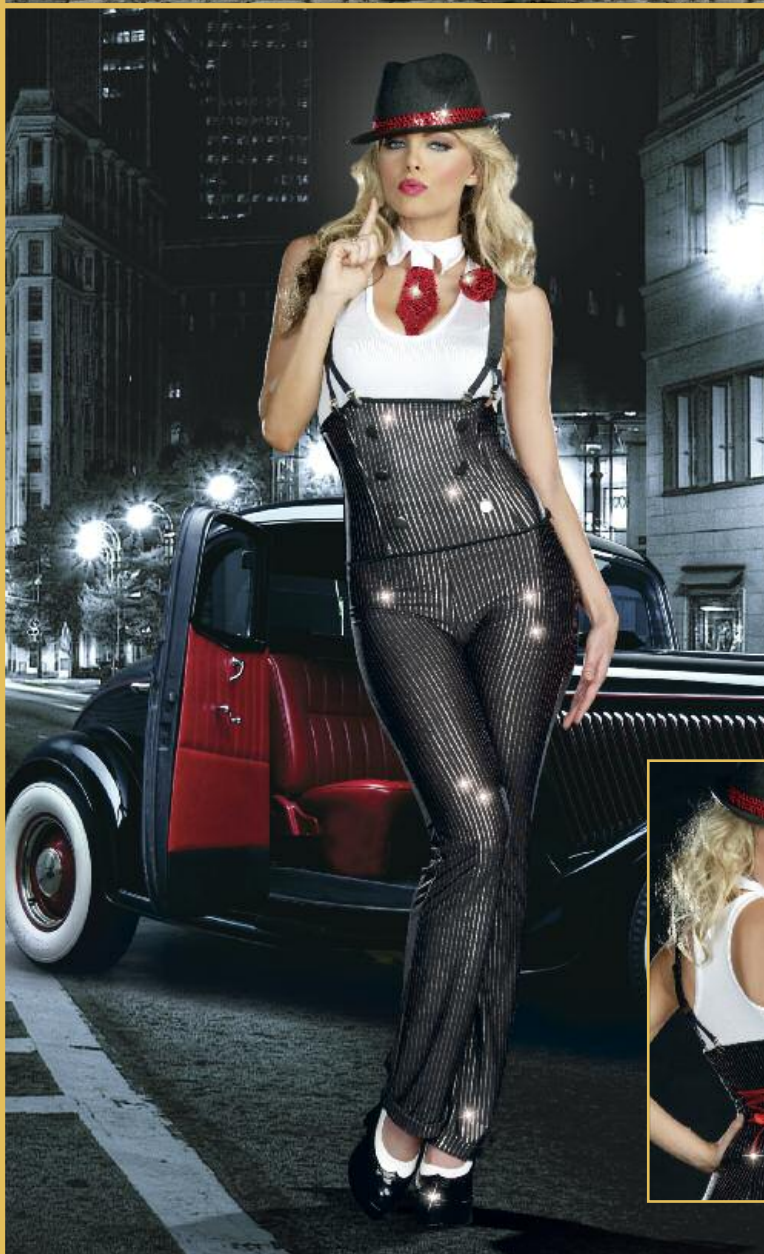


Style 8105

"Zoot Suit Riot"

M, L, XL, XXL

Button front longer length pinstripe zoot suit with matching pants with side pocket and gold chain detail. Includes adjustable removable elastic suspenders, matching hat and neck tie with \$ sign detail. (Shirt not included) (5 piece set)



Style 8104

"Big Guns Betty"

S, M, L, XL

Metallic silver pinstriped stretch microfiber cuff bottom pants with stretch satin tank top. Includes matching pinstriped boned waist corset, adjustable/removable suspenders, collar with sequined neck tie, rosette pin and matching fedora. (7 piece set)







# It's workin'

Styles: 8859 & 8802





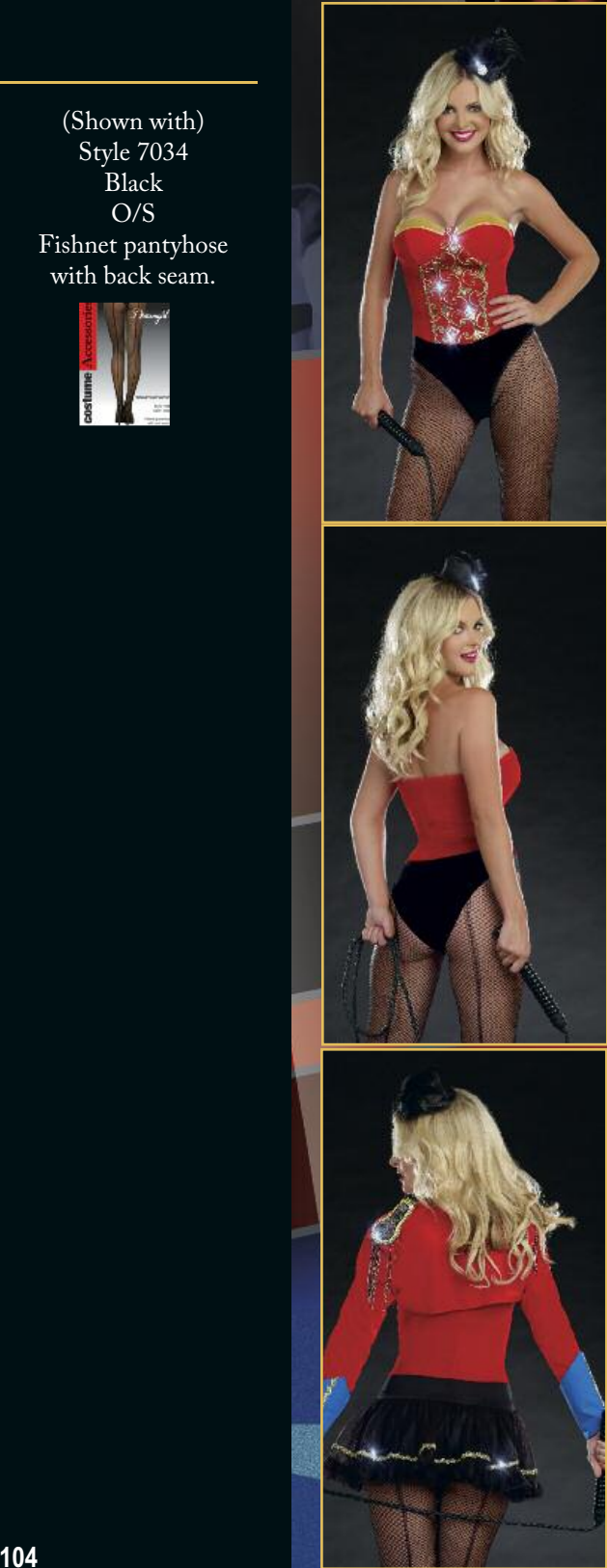


**Style 8859**

“The Masta”

S, M, L, XL

Convertible bodysuit with lightly padded underwire cups, elaborate gold brocade fabric front panel and snap crotch. May be worn with or without separate stretch velvet jacket with epaulettes. Includes separate soft mesh tutu skirt, mini top hat with jewel and feather detail attached to a headband. (Bull whip not included) (5 piece set)



(Shown with)  
Style 7034  
Black  
O/S  
Fishnet pantyhose  
with back seam.



*She does her thing inside the ring!*





**Style 8802**

"Cirque Du Sexy"

S, M, L, XL

*This circus cutie's beauty will leave  
you hanging in mid air....*

Satin and stretch knit  
dress with lightly  
padded underwire cups.  
Jagged edge top skirt  
over multi-layered tutu  
with jingle bell details.  
Includes matching mini  
top hat on a headband,  
and tutu choker.  
(Thigh highs not  
included)  
(3 piece set)





**Style 8775**

“Burlesque Beauty”

S, M, L, XL

Fringed corset with sequin trim, hook & eye front closure and adjustable back. Includes sequin burlesque panty, ostrich feather barrette and long fringe burlesque skirt. (Jewelry, pantyhose and gloves not included) (4 piece set)

*She’s here to entertain you,  
she’s here to please, so come a  
little closer, it’s you she wants to  
tease!*

(Shown with)  
Style 7034  
Black  
O/S  
Fishnet pantyhose  
with back seam.







*This sexy Cabaret Doll is entertaining for sure. She always has her audience screaming for more.*

**Style 8776**

"Cabaret Doll"

S, M, L, XL

Halter style sequin front dress with fringe hemline. Sequin cabaret top hat, bow tie and removable/adjustable garters.

(Thigh highs, gloves and cane not included)  
(4 piece set)

(Shown with)  
Style 5218  
"Luna Glove"  
Black, White  
O/S

Stretch satin opera length gloves.





What goes up, must go down in the mile high club!



**Style 8807**

“Up in the Air”  
S, M, L, XL, 1X/2X, 3X/4X

Dress with lightly padded underwire cups accented with metallic gold piping details. Includes matching shrug, neck scarf, pilot hat and thigh high stockings with pilot wing appliques. (5 piece set)



It looks like the friendly skies just got a little friendlier!



Sexy turquoise dress with airline patches and gold trim. Includes gold lame scarf, name plate that says; Miss Dee Licious, hat, and gloves.

**Style 8773**

“Air Candy”  
S, M, L, 1X/2X, 3X/4X





**Style 8407**

"Fly Me"  
S, M, L, XL

Retro style stewardess suit includes a button down jacket with 3/4 sleeves and short pencil skirt. Includes fiber optic light-up hat with "FLY ME" and hidden pocket for on/off switch. Flight pin, gloves, batteries and instructions also included. (Tray and cups not included) (5 piece set)



**Style 8202**

"Coffee, Tea, or Me!"  
S, M, L, XL

Vintage style flight attendant uniform with attached neck scarf and gloves. Includes fiber optic light-up hat with "FLY ME" and hidden pocket for on/off switch. Batteries and instructions included. (Tray and cups not included) (3 piece set)



*This naughty pilot always thinks it's sweet, to get down and dirty at 20,000 feet.*



**Style 8192**  
Mile High Pilot  
"Sheila B. Bangin' "  
S, M, L, XL

Button front long sleeved pilot's dress with gold braid detail.  
Includes pilot hat and removable "Mile High Pilot" badge.  
(3 piece set)



**Style 5236**  
"Mile High Captain Hugh Jorgan"  
M, L, XL, XXL

Button front jacket with satin and gold trim details. Includes pilot hat, collar with necktie and removable "Mile High Pilot Hugh Jorgan" name badge.  
(Pants not included)  
(4 piece set)

(Shown with)  
Style 6379  
"Men's Basic Pant"  
Black, Navy, White  
M, L, XL, XXL

Men's basic pant with elastic waistband and pockets.



**Style 3523**  
"Mile High Captain"  
S, M, L, XL, 1X/2X, 3X/4X

Microfiber dress with attached neck sash. Includes matching pilot hat and removable "Mile High Captain" badge.  
(3 piece set)





## Style 6440

Parisian Provocateur™

S, M, L, XL

Stretch knit dress with floral lace overlay, ruffle trim on shoulder and hem, and adjustable front hem length. Includes maid headband, apron, choker with large rhinestone charm, wrist cuffs and feather duster. (Thigh highs not included) (6 piece set)



(Shown with)  
Style 7030  
Black, White  
O/S, O/S Queen  
Sheer thigh high with  
stay up silicone lace top.



## Style 8212

"Pardon My French"

S, M, L, XL

Black Parisian styled lace over baby pink dress with pleated satin trim has built in petticoat and attached apron. Includes lace trimmed gloves, head piece and feather duster. (Thigh highs not included) (4 piece set)



Ruffled pinafore apron with vintage Parisian print of polka dots and attached to black knit dress with sheer sleeves and large back bow. Includes removable/adjustable garters with bows, headpiece and feather duster. (Thigh highs not included) (3 piece set)



(Show with) Style 7031 Black, Red, White O/S

## Style 8211

"Maid To Order"

S, M, L, XL,  
1X/2X, 3X/4X



# international Beauties

Style 8853









**Style 8853**

“Dragon Mistress”

S, M, L, XL

Convertible stretch knit dress with long Geisha inspired sleeves and embroidered sequin dragon appliqué. The strategically placed zipper across skirt hemline allows the dress to go from ankle length to short and sexy. Once unzipped, the bottom of the dress can be worn as a cape. Includes chopstick hair piece. (2 piece set)



*You will get a lot of pleasure from this Asian treasure.*





**Style 8852**

"The Geisha with the  
Dragon Tattoo"

S, M, L, XL

*This exquisite beauty is such a  
delight, men are captivated at her  
sight.*

Black dress with red foil  
dragons and red sequin  
obi belt with satin  
ribbon tie.  
Includes mandarin  
collar choker, flower  
barrette and chop sticks  
for the hair.  
(Thigh highs not  
included)  
(5 piece set)





**Style 8868**

“Naughty in Paris”

S, M, L, XL

Baby pink and black striped corset with adjustable/removable shoulder straps. Layered black burlesque skirt with organza ruffles and ostrich feather barrette included. (Jewelry, boa and thigh highs not included) (4 piece set)

*This sexy French dancer loves to tease and please.*







*She's not only adorable and charming too, but she'll also has a nice cold brew!*

#### Style 8850

"Beer Girl Carrie Mehme"

S, M, L, XL

Brown velvet dress with pink trim and Bavarian style embroidery on bodice. Includes apron with heart shaped pockets and separate sleeves.

(Hair ribbons, beer mug, petticoat and thigh highs not included)  
(3 piece set)

#### Style 4582

"Ursula Petticoat"

Black, White

O/S

Multi layer tulle petticoat with three lace ruffles.





Look into her crystal ball, and you will have it all!



**Style 8880**

"Miss Fortune"

S, M, L, XL

Halter neckline with adjustable ties and embroidered floral appliqué, ruffled off-the-shoulder sleeves, brocade damask pattern skirt and attached waist scarf with gold coins.

Includes matching head scarf.  
(Jewelry not included) (2 piece set)

All the boys heads will twirl when they see her hips swirl.



**Style 8854**

"Tahiti Sweetie"

S, M, L, XL

Tahitian inspired costume with lightly padded coconut bra cup, adjustable shell adorned halter ties, two adjustable back ties and shell appliqué. Grass skirt with tassels and shell detail appliques.

Includes matching headpiece and faux flower wristbands.  
(Straw pom poms not included) (4 piece set)



**Style 8878**

"Mardi Gras Maven"

S, M, L, XL

*This Mardi Gras Maven is looking sweet, when she throws her beads on Bourbon Street.*

Green and purple foil print dress with adjustable/removable shoulder straps, multi layered ruffled skirt with gold sequin trim. Includes shrug with sequin trim. (Mask and jewelry not included) (3 piece set)







#### Style 8140

"Asian Persuasion"

S, M, L, XL

Stretch microfiber knit wrap style dress with gold lamé accents and exquisite Asian dragon brocade accent Kimono style sleeves. Includes matching Obi waist corset with bow, orchid with gold chop stick hairpiece and umbrella. (4 piece set)



#### Style 8138

"Juana Banana"

XS, S, M, L

Watermelon inspired dress with lightly padded underwire cups with adjustable halter ties, sequin front panel and multi colored ruffle hemline. Includes matching ruffle sleeves and fruit adorned hat. (3 piece set)



#### Style 7572

"Ally Kazam"

S, M, L, XL

Chiffon peasant styled top with gold foil paisley print trimmed with gold sequin band. Matching genie pants with gold sequin waistband have attached stretch shorts inside. Includes scarf and head piece. (4 piece set)



Style 5084

"Hot Scottie"

M, L, XL, XXL

Plaid pleated kilt with attached sash. Includes matching hat, belt with bag and two sock garters with matching plaid ties. (5 piece set)



Style 4550

"Eskimo Cutie"

XS, S, M, L, 1X/2X, 3X/4X

Zipper front stretch crushed velvet dress with faux fur trimmed hood with pom pom ties. Includes mittens, faux fur trimmed boot covers, and faux chocolate popsicle. (Petticoat not included) (4 piece set)



(Shown with)  
Style 4578  
"Angel Petticoat"  
Black, Red, White  
O/S  
Single layer tulle  
petticoat with three  
lace ruffles.



Style 8217

"Can-Can in Paris"

S, M, L, XL, 1X/2X, 3X/4X

Corset style dress with lightly padded underwire cups embellished with sequin and satin trim and attached multi layered ruffle skirt with back bustle. Includes adjustable/removable garters, mini hat and choker. (Thigh highs and gloves not included) (3 piece set)



Style 5218  
"Luna Glove"  
Black, White  
O/S  
Stretch satin opera  
glove.



Style 8218

"Beer-ly Legal"

S, M, L, XL

Black velvet Bavarian beer girl dress has rhinestone and embroidery front appliqué, satin skirt with attached apron, chiffon sleeves and large back bow. Includes hair ribbons, LED light-up mug, batteries and instructions. (Thigh highs not included) (3 piece set)







# mythical Magic

Style 8837





After just one shot, she's the sexy hot figment of your imagination.



Stretch knit ombré sequin tube dress with sheer mesh hemline and back bustle with bow detail. Includes shoulder straps, wings and fairy wand. (Wig not included) (3 piece set)



(Shown with) Style 8898 "Pixie Wig" Green O/S  
Light-up green bob style wig with hidden pocket for on/off switch.

**Style 8837**

"Fantasy Fairy"

S, M, L, XL



*This ethereal beauty seems to have dropped from above, she is Aphrodite, the goddess of love!*



**Style 8861**

“Goddess of Love, Aphrodite”  
S, M, L, XL, 1X/2X, 3X/4X

Goddess dress with gold sequined embroidery and gold trim. The strategically placed zipper across skirt hemline allows the dress to go from ankle length to short and sexy. Once unzipped, the bottom of the dress can be worn as a cape. Rhinestone headpiece and arm bands included. (3 piece set)

*Every inch of this mighty God is simply heavenly !*



White tunic with gold satin attached cape and matching trim. Gold leaf headpiece, removable belt and wrist cuffs included.  
(4 piece set)

**Style 8860**

“He’s a God”  
M, L, XL, XXL



*This goddess will inspire you  
beyond mythical proportions.*

**Convertible**



**Style 8838**  
"Goddess She Hot"  
S, M, L, XL

Versatile stretch metallic gold shimmer dress with Roman style sequin brocade trim. May be worn 4 ways at neckline. Includes matching arm bands, choker and headband. (Jewelry not included) (4 piece set)



*It's no mystery, she's the hottest  
thing in Roman history.*



V-neck wrap front microfiber dress with sequin coin details, attached chiffon cape and high-low hemline. Includes matching gold sequin coin trim choker, headband and matching arm bands. (Jewelry not included) (4 piece set)

**Style 8963**  
"Goddess of Olympia"  
S, M, L, XL





**Style 8208**  
"Golden Goddess"  
S, M, L, XL

Golden sequin paillette fringed gown with side slits and attached back chiffon scarf. Dress has a 32" nude lining. Includes metallic gold arm bands and a cascading rhinestone headpiece.  
(3 piece set)



**Style 8172**

"Knockin' on Heaven's Door"

S, M, L, XL

Sparkle stretch knit dress has flattering all over ruching and plunging neckline with sequined trim and adjustable length hemline. Includes large feather wings, foil star head wreath and silver star wand.  
(4 piece set)



**Style 8213**

"Sea Queen"

S, M, L, XL

Shimmering mermaid dress has elaborate gold sequin paillette fish appliques, ruching detail and cascading organza ruffle hemline. Includes jeweled gold crown.  
(2 piece set)



**Style 8835**

"Warrior Elf"

S, M, L, XL

*Hiding amongst the trees is her game,  
but slaying dragons is her claim to  
fame!*

Stretch knit and chiffon peasant style dress with lace-up corset detailing at waist and pelted skirt hemline with metallic gold piping. Includes matching sleeves and headband with elf ears. (Sword not included) (3 piece set)







# Once Upon a Time

Style 8805





Only true loves sweet  
kiss, could wake her  
from sleepy bliss.



Stretch velvet and satin long sleeve, off-the-shoulder dress  
with rose bud accented back bustle and high-low hemline.  
Includes matching princess crown on a headband.  
(2 piece set)

**Style 8805**  
"Sleeping Princess"  
S, M, L, XL



**Style 8944**  
"Midnight Magic Princess"  
S, M, L, XL

Stretch knit and satin dress with sweetheart neckline, high-low hem and reversible sequin front inset that changes from blue to silver with the stroke of your hand. Includes organza puff sleeves, headband and cameo choker. (Jewelry, gloves, petticoat and thigh highs not included) (5 piece set)

(Shown with)  
Style 7031  
Black, Red, White  
O/S  
Sheer thigh high with back seam.

Style 5218  
"Luna Glove"  
Black, White  
O/S  
Stretch satin opera length glove.

Style 8964  
"Fairytale Petticoat"  
Black, White  
O/S  
Multi layered mesh petticoat with satin ribbon high-low hem and back bow.



— Reversible Sequins —



**Style 8885**

"Snow Queen"

S, M, L, XL

*She's thinks her land of snow and ice  
is quite nice!*

Shimmer microfiber  
dress with glitter  
snowflake print and  
tutu style skirt with  
attached long chiffon  
bell shaped sleeves.  
Includes matching  
wand and crown.  
(Earrings not included)  
(3 piece set)





All she wants is for someone  
to take her home.



**Style 8806**  
"Heel Clickin' Cutie"  
S, M, L, XL

Gingham printed pinafore style dress with adjustable tie back, front button accents, sequin pocket detail with dog appliqué. Includes two sequin bows that can be worn as hair bows or stocking clips.  
(Basket and thigh highs not included) (2 piece set)  
(Shown with) Style 7031 Black, Red, White O/S  
Sheer thigh high with back seam.

She's always on the hunt for the  
big cheese....



Retro polka dot dress with lightly padded underwire cups and multi ruffled hemline. Includes polka dot bow belt, mouse tail, choker, polka dot thigh high stockings, headband with matching bow and light-up mouse ears. Batteries and instructions included. (6 piece set)

**Style 8791**  
"Miss Mouse"  
S, M, L, XL,  
1X/2X, 3X/4X



### Style 7470

"Lil' Red De-Light"

S, M, L, XL, 1X/2X, 3X/4X

Metallic plaid dress with lace trim, chiffon puff sleeves, lace up waist corset and hooded cape. (Thigh highs and basket not included) (3 piece set)



(Shown with)  
Style 7030  
Black, White  
O/S, O/S Queen  
Sheer thigh high  
with stay up silicone  
lace top.



### Style 7497

"Big Bad Sexy Wolf"

S, M, L, XL, 1X/2X, 3X/4X

Zipper front stretch crushed velvet dress with faux fur trimmed hood with pom pom ties, attached ears and tail. Includes faux fur trimmed boot covers. (2 piece set)



*When the wolf is  
howling at the moon  
she'll make you  
swoon....*



Off-the-shoulder satin and stretch knit dress with damask fabric peplum and adjustable lace-up front detail. Includes satin hooded capelet and glitter rosette stocking clips. (Thigh highs and petticoat not included) (3 piece set)

(Shown with) Style 7031 Black, Red, White O/S  
Style 8964 "Fairytale Petticoat" Black, White O/S  
Multi layered mesh petticoat with satin ribbon high-low hem and back bow.

### Style 8946

"Naughty Little Red"

S, M, L, XL



**Style 8781**

"Queen of Hearts"

S, M, L, XL

Black velvet dress with elaborate red and silver sequin heart design on front bodice. Double layer red satin and black velvet skirt with silver sequin trim. Heart shaped collar is embellished with heart shaped sequins, adjustable/removable shoulder straps and heart choker. Rhinestone crown comb and sleeves included. (Scepter, gloves and thigh highs not included) (5 piece set)

(Shown with)  
Style 7031  
Black, Red, White  
O/S  
Sheer thigh high  
with back seam.

Style 5218  
"Luna Glove"  
Black, White  
O/S  
Stretch satin opera  
length glove.



*Many have fled, when this  
evil queen screamed, "Off with  
their heads!"*





**Style 8945**

"Wonderful in Wonderland"

S, M, L, XL

Stretch shiny knit dress with halter ties and striped pleated lace detail. Includes matching separate jacket, apron with artwork, striped thigh high stockings and headband with large bow.  
(Petticoat not included)  
(5 piece set)

(Shown with)  
Style 4578  
"Angel Petticoat"  
Black, Red, White  
O/S  
Single layer tulle  
petticoat with three  
lace ruffles.





**Style 8962**

“Totally Madd!”

S, M, L, XL

Corset dress with lightly padded underwire cups with brocade and sequin front inset, removable/ adjustable shoulder straps, multi layer tutu skirt with peplum detail and checkered neckline. Includes matching jacket, checkered bow choker and mini top hat on a headband. (Wig and thigh highs not included) (4 piece set)



*One pill makes you larger, and one pill makes you small, but the ones that mother gives you, don't do anything at all....*



**Style 9173**

"Lost In Wonderland  
White Rabbit"

S, M, L, XL

Stretch knit dress with sweetheart neckline with checkered print edging, front panel with sequin heart appliques and multi layer tutu skirt with attached bunny tail and . Includes matching tulle choker, boot covers, removable/adjustable shoulder straps and top hat with attached faux fur bunny ears. (Wig, thigh highs, and faux fur cuffs not included) (5 piece set)





*Mirror, mirror could there possibly be, anyone in this land prettier than me?*



**Style 8402**  
"The Queen of Mean"  
S, M, L, XL

Sequin gown with embellished trim, chiffon hem, attached cape and gauntlet sleeves with detachable feather collar. Includes black jeweled crown and choker. (Apple not included) (4 piece set)

*He's so mysterious, you'll feel delirious.*



Double breasted button front vest with scroll print detail. Includes tie front cape with fold down collar, bow tie, Mysterious Phantom half mask and faux rose. (5 piece set)

(Shown with) Style 6379 "Men's Basic Pant"  
Black, Navy, White M, L, XL, XXL

**Style 6551**  
"Mysterious Phantom"  
M, L, XL, XXL



### Style 7537

"Pretty Pan"

S, M, L, XL

Stretch satin dress with plunging neckline and jagged edge adjustable length drawstring hemline. Includes belt, sword and matching hat. (4 piece set)



### Style 6384

"Pixie Lust"

S, M, L, XL

Metallic microfiber iridescent dress with a sequined gold decorative appliqué and jagged hem with gold sequin accents.

Includes pixie dust purse, gold headband, wand and light-up wings. Batteries and instructions included. (5 piece set)



light up costume



Ruffle hem dress and faux vinyl waist corset. Includes hat, lace-up gauntlets and drawstring bag. (5 piece set)

### Style 4494

"Robyn Da Hood"

S, M, L, XL, 1X/2X, 3X/4X



**Style 8867**

"Treasure Pleasure"

S, M, L, XL

Pirate dress with attached black velvet scroll printed vest, red lace peasant style top with layered bell sleeves and attached high-low hemline petticoat. Pirate hat included. (Jewelry, sword and pantyhose not included) (2 piece set)

*Many a pirate did she pleasure,  
when she shared her buried  
treasure.*

(Shown with)  
Style 7034  
Black  
O/S  
Fishnet pantyhose  
with back seam.





*Her precious booty was a pirates  
delight, on her ship late at night.*



**Style 8757**

"Precious Booty"

S, M, L, XL

Black off-the-shoulder peasant dress with sheer sleeves,  
ruffled satin skirt and red bodice with black lace overlay.  
Includes pirate hat and belt with skull buckle.  
(Jewelry, sword and pantyhose not included) (3 piece set)

(Shown with) Style 7034 Black O/S

*In love with this pirate, the  
wenches did fall, after he made  
his booty call.*



Black pirate top with heat transfer metal stud skull. Black  
faux leather vest, red waist sash and headpiece included.  
(Pants and sword not included) (4 piece set)

(Shown with) Style 6379 "Men's Basic Pant"  
Black, Navy, White M, L, XL, XXL

**Style 8774**

"Looking for Booty"

M, L, XL, XXL



**Style 8795**

“Surrender the Booty”

S, M, L, XL

Velvet dress with lightly padded underwire cups, high-low hemline bustle skirt and attached gold coin belt. Includes separate long sleeve jacket with French cuffs and pirate hat. (Sword not included) (3 piece set)

*Open her treasure chest and you will know why she's best!*





### Style 8115

"Pirate's Passion"

S, M, L, XL, 1X/2X, 3X/4X

Peasant style skull print stretch knit and velvet bodice has puff sleeves that can be worn on or off the shoulders, adjustable halter neckline with flattering bust ruching and innovative satin skirt with light-up skull appliques at hemline. Includes matching skull print head scarf with coin trim, batteries and instructions. (Sword, pantyhose and petticoat not included) (2 piece set)



light up costume

### Style 5923

"Pirate Wench"

S, M, L, XL, 1X/2X, 3X/4X

Stretch knit peasant off-the-shoulder dress with cut-out and lace-up sleeves with ruffle hem. Includes removable vinyl boned waist corset with front lace-up and hook & eye back closure. Includes head scarf with silver skull & cross bones, faux sword and "Pirate Booty" drawstring pouch. (Fence nets not included) (5 piece set)



Stretch velvet with gold foil print pirate costume with French cuffs and gold brocade button details. May be worn as a dress or jacket. Includes removable dickie piece with lace neckline, gold skull belt and 3 corner pirate hat with feather. (Sword, pantyhose and petticoat not included) (4 piece set)

### Style 8116

"Golden Treasure Pirate"

S, M, L, XL

(Shown with) Style 7034 "Ursula Petticoat" Black, White O/S  
Style 4582 Black, White O/S



animal

Instincts

Styles 8804 & 8800









*This cutie is always looking for a tumble in the jungle!*



**Style 8804**

“Jungle Jane”  
S, M, L, XL



Stretch bengaline dress with faux fur trim, gold buttons and adjustable length shirt tail hemline. Includes belt, matching hat and stretch knit boy shorts with faux fur tiger paw prints. (Bull whip not included) (3 piece set)

*This monkey cutie is always looking for a big banana!*



Stretch velvet faux fur trimmed hoodie jacket with monkey face, pom pom ties and front pocket detail. Includes matching A-line faux fur skirt, faux fur boot covers, removable/bendable tail and banana purse. (4 piece set)

**Style 8800**

“Monkey Business”  
S, M, L, XL



**Style 8760**

"Cheetah-licious"

S, M, L, XL, 1X/2X, 3X/4X

Leopard print stretch  
crush velvet hooded  
dress with fur trim and  
removable tail.  
Includes boot covers.  
(2 piece set)



*This naughty kitty loves to  
growl, late at night when she's  
out on the prowl.*





Don't you wish you had a mouse  
that looked like this in your house?



**Style 8764**

"Cutie Patooty"

S, M, L, XL

Gray and baby pink hooded stretch crush  
velvet dress with attached tail and boot covers.  
(2 piece set)

She's adorable and affectionate  
too, this sweet little kitty wants  
to play with you!



**Style 8758**

"Pretty Kitty"

S, M, L, XL

White and baby pink hooded stretch crush velvet dress with  
attached tail, fingerless gloves and faux fur boot covers.  
(3 piece set)





She's ready to hop to you...

**Style 8942**

"Be My Bunny"

S, M, L, XL

Stretch crush velvet tube dress with faux fur trimmed neckline and hemline with sequin front inset and attached tail. Includes adjustable/removable shoulder straps, hood with faux fur trim, pom pom ties, attached sequin floppy ears, faux fur wrist cuffs and boot covers. (3 piece set)



This poodle is looking for oodles of love.

Stretch velvet dress with faux fur trimmed hood with poodle face, attached ears with bows, pom pom ties, faux fur trim and tutu ruffle hemline with attached tail. Includes matching dog collar choker with heart name tag, faux fur boot covers and bone purse. (4 piece set)

**Style 8809**

"No Bones About it"

S, M, L, XL



When looking for big nuts, she swishes her bushy tail to attract a male.



**Style 8787**

"Got Nuts?"

S, M, L, XL

Stretch velvet faux fur trimmed hoodie jacket with squirrel face and faux fur trimmed pockets. Includes matching A-line skirt with faux fur trimmed hemline, mittens with paw print, faux fur trimmed boot covers, removable/bendable bushy tail and acorn purse with "Got Nuts" detail. (6 piece set)

She lets out a growl when she's on the prowl.



**Style 8783**

"Bear Hugs"

S, M, L, XL, 1X/2X, 3X/4X

Stretch velvet dress with double ruffle hemline, faux fur neckline detail and bear tail. Includes separate hooded jacket with teddy bear face, mittens with paw print, removable/adjustable shoulder straps and matching faux fur boot covers. (5 piece set)



*She wants to hang out in the bamboo with you!*



**Style 8793**  
"Panda Bear Baby!"  
S, M, L, XL

Zipper front stretch velvet dress with faux fur trimmed hood, panda bear face and pom pom ties. Includes matching paw print mittens, faux fur trimmed boot covers and attached tail. (3 piece set)  
(Shown with) Style 4578 "Angel Petticoat" Black, Red, White O/S

*Everyone can't help but stare, when they see this adorable panda bear.*



**Style 8768**  
"Panda Cutie"  
S, M, L, XL

Hooded stretch velvet dress with panda face, faux fur accents, attached tail and heart button detail. Faux fur boot covers included. (2 piece set)



**Style 8222**

"Peacock Envy"

XS, S, M, L

Corset styled dress with feather patterned sequin bodice and fully lined tutu skirt with back bustle. Comes with peacock feather headpiece and removable/adjustable shoulder straps. (4 piece set)

**Style 7524**

"Royal Peacock"

S, M, L, XL

Fully boned satin and microfiber corset dress with genuine peacock feather accents and adjustable halter straps. Multi layered tutu skirt has removable peacock tail feathers. Includes jeweled tiara. (Thigh highs and gloves not included) (3 piece set)



(Shown with)  
Style 5218  
"Luna Glove"  
Black, White  
O/S  
Stretch satin opera  
length gloves.

Style 7030  
"Sheer Thigh High"  
Black, White  
O/S, O/S Queen  
Sheer thigh high with  
stay up silicone lace top.

**Style 8569**

"Blue Bird Beauty"

S, M, L, XL

Corset style dress with elaborate sequin and feather appliqué with multi layered tutu skirt. Includes removable feather tail, matching headpiece and choker. (4 piece set)



## Style 8414

"Buzzin' Bee Beauty"

S, M, L, XL

Easy to wear stretch knit bee striped tube styled dress with tulle multi layered tutu style skirt and bee stinger.

Costume features hidden pocket for innovative sound device which makes a "Buzz" sound when squeezed. Includes light-up bee wings, matching headband with antennae, neckband, striped stockings with rosette details, batteries and instructions. (6 piece set)



Interactive Costume

## Style 8170

"Monarch Fairy"

XS, S, M, L

Custom designed monarch butterfly print satin dress with adjustable halter neckline, sexy sheer stretch mesh side and back cut-outs and slit butterfly wing like hemline. Includes next generation LED light up monarch butterfly wings and matching antennae. Batteries and instructions included. (Petticoat and pantyhose not included) (3 piece set)



(Shown with)  
Style 4582  
"Ursula Petticoat"  
Black, White  
O/S

Style 7034  
Black  
O/S  
Fishnet pantyhose  
with back seam.



## Style 8341

"Night Prowler"

S, M, L, XL

Stretch microfiber long sleeve zipper front cat suit with laser cut accents, faux vinyl belt with tail and pocket for innovative sound device which makes a "Meow" sound when squeezed. Includes neckband and mask with ears. Batteries and instructions included. (Whip not included) (6 piece set)



Interactive Costume

## Style 8147

"Zebralcious"

XS, S, M, L

Punk inspired zip front stretch knit zebra print pantsuit has faux fur trimmed hood with ears and Mohawk wig hair mane. Includes flattering waist cinching corset with boning and back stud detail with matching removable tail. (3 piece set)





# Activities

# extra curricular



Style 8788



**Style 8788**

"Home Run"

S, M, L, XL, 1X/2X, 3X/4X

Button front jersey style dress with sequin "Home Run" detail, attached adjustable belt, ruffle and sequin trimmed skirt.

Includes baseball hat and hair ribbons (not shown). (Bat and knee socks included) (3 piece set)



*This athletic cutie goes right past first base and always slides in for a homerun!*





**Style 8900**

“Touchdown!”

S, M, L, XL

Black football jersey style top with sequin accents and matching lace-up short with athletic stripes. Thigh high sport socks included. (3 piece set)

*Down the field she likes to roam, she's grabbing that ball and takin' it home!*





Style 6469

"Grand Slam"  
S, M, L, XL

Stretch knit snap front dress with sequin embroidered "Gram Slam" appliqué and heat transfer number "10" detail on back. Includes stretch knit short with elastic waist, baseball cap and athletic knee high socks. (5 piece set)



Convertible



Style 5042

"Tackle Me"  
S, M, L

Stretch knit dress with football mesh top section and shoulder pads. Sequin number "10" appliqué on front and both shoulders. Includes gloves, thigh high socks and inflatable football. (5 piece set)



Style 6477

"Ride It"  
XS, S, M, L

Gloss checker print microfiber zip front romper with side stripes and race car patches. Includes matching microfiber checker print skirt, belt with "Racing" heat transfer and flag. (Sunglasses and fence nets not included) (4 piece set)



Convertible



Style 3760

"Boxer Girl"  
S, M, L, 1X/2X, 3X/4X

Stretch knit underwire camisole and matching skirt with shirring details. Includes matching robe with sash tie and boxing gloves. (5 piece set)





**Style 8761**

“Class Act”

S, M, L, XL

Woven red plaid drop waist dress with underwire foam cups and attached belt with pleated skirt. Dress has zip front and adjustable corset lace-up back. Includes black shrug with plaid trim and neck tie. (Hair bows, glasses and anklet socks not included) (3 piece set)

*How the school boys did drool,  
when this class act came to school!*





Convertible



# Style 8201

"After School Special"

XS, S, M, L

Convertible school girl has button down preppy top with chenille varsity letter detail and flirty pleated skirt. Coordinating lace trimmed bra top and neck tie included. (Thigh highs and hair bows not included) (4 piece set)

(Shown with) Style 6046 Black, Red, White O/S



# Style 8343

"Puck U"

S, M, L, XL, 1X/2X, 3X/4X

Sporty deep V-neck stretch knit jersey style dress with three quarter length sleeves, unique sequin accented front and back "Puck U" and perfect "10" details. Includes sequin hockey puck purse and mini hockey stick. (4 piece set)



# Style 6452

"Trouble At School"

S, M, L, XL, 1X/2X, 3X/4X

Reversible plaid Schoolgirl/Teacher pinstripe skirt with kilt pin, button front jacket and stretch knit tie front top. Includes apple pin, "Teacher Miss Ivana Youngman" name badge, hair bows and eye glasses. (Thigh highs not included) (8 piece set)





# electric

## Kandi

Style 8969, 8877, 8970, 8968, 9188









**Style 8877**

“Kandi Kid”  
S, M, L, XL

Versatile neon rainbow knit striped dress may be folded in half and worn as a bandeau top. Includes matching neon rainbow tutu. (Jewelry, blue wig, neon light-up wig, thigh highs and boot covers not included) (2 piece set)

(Shown with)  
Style 8894  
“Kandi Kid Wig”  
Multi  
O/S  
Bright multi-color light-up cyber locks with bow trim.



Style 8978  
“Neon Fishnet Thigh Highs”  
Neon Pink  
O/S  
Stretch knit wide fishnet thigh highs with closed toe and wide back seam detail.

Style 9192  
“Rainbow Boot Covers”  
Multi  
O/S  
Bright rainbow furry boot covers.



*Life can be ecstasy in Kandi Land.  
Where one never knows where one might land.*





# Style 8968

"Dazed"

S, M, L, XL

Come with us tonight, where  
electric daisies sparkle bright.

Hot pink light-up multi  
color daisy top with  
lightly padded cups and  
fringe detail. Includes  
hot pink bikini bottom,  
neon green tutu with  
removable/adjustable  
garters, hair bow  
barrette, batteries and  
instructions included.  
(Wig, jewelry, thigh  
highs and boot covers  
not included)  
(4 piece set)



(Shown with)  
Style 9191  
"Light-Up Long Wig"  
Green  
O/S  
Long green  
synthetic light-up wig  
with hidden pocket for  
on/off switch.



Style 9195  
"Rainbow Daisy  
Thigh High Socks"  
Multi  
O/S  
Bright rainbow knit  
thigh highs with  
daisy detail.

Style 9193  
"Boot Covers"  
Neon Pink  
O/S  
Furry boot covers.





**Style 8969**

“Life’s a Circus”

S, M, L, XL

Silver foil and black harlequin print lightly padded underwire bra with pink pom pom trim. Matching harlequin print bikini bottom with removable/adjustable garters. Includes matching pink/black tutu, light-up headpiece, batteries and instructions. (Jewelry, wig, thigh highs, wristlets and boot covers not included) (5 piece set)

(Shown with)  
Style 8898  
“Light-up Pixie Wig”  
O/S  
Green  
Light-up neon green synthetic hair wig in bob cut with hidden pocket with on/off switch.



Style 9193  
“Boot Covers”  
Neon Pink  
O/S  
Furry boot covers.



*This clown she’s isn’t real it seems, she comes to us in psychedelic dreams.*





**Style 9188**

"Dino D Licious"

S, M, L, XL

Description missing

(Wig, jewelry, thigh  
highs and boot covers  
not included)

(Shown with)  
Style 9191  
"Light-Up Long Wig"  
Green  
O/S

Long green  
synthetic light-up wig  
with hidden pocket for  
on/off switch.



Style 9193  
"Boot Covers"  
Neon Pink  
O/S  
Furry boot covers.



*Caught up in the Rave you might just think,  
that all dinosaur's are supposes to be pink.*





Who is to say who is sane you see? She's Raving Mad but having more fun than me.



**Style 8970** Bright purple vest with hot pink center and lime green buttons. Matching shorts have tea cup appliqué. Includes light-up top hat, striped bow tie, wrist cuffs, removable/adjustable garters, batteries and instructions (Wig, jewelry, thigh highs and boot covers not included) (5 piece set)  
(Shown with) Style 8898 "Light-Up Pixie Wig" Green O/S  
Style 9193 "Boot Covers" Neon Pink O/S

This electric kitty is going on a trip. Through the rabbit hole she might just slip.



Hot pink and black zip front stretch crush velvet hoodie. Includes shorts and striped boot covers. (Jewelry, wig and thigh highs not included) (3 piece set)  
(Shown with) Style 8978 "Neon Fishnet Thigh Highs" Neon Pink O/S

**Style 8956** "Cattitude"  
S, M, L, XL



**Style 8955**

"Beyond Wonderland"

S, M, L, XL

*Far beyond what the eye can  
see, is a place called Wonderland,  
it's ecstasy!*

Sexy blue top with  
white ruffle accents and  
bow front with  
rhinestone heart. Skirt  
has light-up sequin  
appliqués and  
a built-in petticoat.  
Includes hair bow  
headband, batteries  
and instructions.  
(Wig, gloves and thigh  
highs not included)  
(3 piece set)





# seasonal Sweeties

*Sexy Santa is here you. She wants to make all your wishes come true!*

Style 8870

**Style 8870**

"Santa Baby"

S, M, L, XL

Red stretch crush velvet dress with faux fur trim at neckline and hem. Includes matching long sleeve shrug, belt, jingle bell stocking toppers and Santa's hat. (Thigh highs and gloves not included) (5 piece set)

(Shown with)  
Style 7031  
"Sheer Thigh High"  
Black, Red, White  
O/S  
Sheer thigh high  
with back seam.





*She's always naughty on hot holiday nights!*



NORTH P



**Style 8887**  
"Jolly Holiday"  
S, M, L, XL

Stretch velvet and sequin dress with adjustable halter ties and faux fur trim hem. Includes hooded capelet with faux fur trim, faux vinyl belt and faux fur boot covers. (4 piece set)

*This sexy Santa loves when you are naughty!*



NORTH P

Red satin dress with faux fur trim, adjustable shoulder straps and bow details. Includes Santa hat and faux fur boot toppers. (3 piece set)

**Style 8972**  
"Under The Mistletoe"  
S, M, L, XL



Watch out for arrows coming from above. This beautiful Cupid will make you fall in love.



**Style 8893** Red Cupid's dress with sequin bodice has full satin skirt with red sequin heart appliques. Includes heart shaped wings, removable/adjustable shoulder straps and red bow barrette. (Thigh highs not included) (4 piece set)  
S, M, L, XL  
(Shown with) Style 6046 "Opaque Thigh High" Black, Red, White O/S



**Style 4552**  
"Sleigh Belle"  
XS, S, M, L  
Zipper front crushed stretch velvet dress with faux fur trim hood with pom pom ties and attached tulle petticoat. (Additional petticoat not included) (1 piece set)



Style 4578  
"Angel Petticoat"  
O/S  
Black, Red, White  
Single layer tulle petticoat with three lace ruffles.



**Style 4017**  
"Santa's Sweetie"  
S, M, L

Stretch velvet dress with faux fur trim. Includes hat, necklace, belt and gauntlets. (6 piece set)





*They are always after her for her lucky charms!*

**Style 8888**

"Lady Luck"

S, M, L, XL

Stretch knit corset style brocade bodice dress with adjustable front lace-up panel, satin skirt and attached apron with shamrock details.

Includes matching mini top hat on headband, hair ribbons and leg garter. (Beer mug, thigh highs and petticoat not included) (4 piece set)

(Shown with)

Style 7031

"Sheer Thigh High"

Black, Red, White

O/S

Sheer thigh high with back seam.

Style 4578

"Angel Petticoat"

Black, Red, White

O/S

Single layer tulle petticoat with three lace ruffles.





*This adorable Leprechaun has to say, she wants to make your lucky day!*



**Style 8967**

"Lucky You!"  
S, M, L, XL

Satin dress with adjustable shoulder straps, attached apron and matching mini hat. (2 piece set)

(Shown with) Style 7031 Black, Red, White O/S



**Style 5199**

"Spank Me I'm Irish"  
S, M, L

Stretch knit strapless dress with attached belt, felt clover detail skirt and puff arm sleeves. Includes hat, pot of gold bag and riding crop. (Thigh highs not included) (6 piece set)

(Shown with)  
Style 7031  
Black, Red, White  
O/S  
Sheer thigh high with  
back seam.



**Style 4481**

"Get Lucky Leprechaun"  
M, L, XL, XXL

Button front vest and matching suspenders. Includes hat, large bow tie and arm band with "Kiss Me" clover. (Pants not included) (5 piece set)





**Style 6540**

"Miss Liberty"

S, M, L, XL

Stretch knit faux wrap dress with side shirring detail. Includes headpiece and light-up torch with battery. (3 piece set)



**Style 5238**

"Mardi Gras Queen"

XS, S, M, L

Underwire bra and matching short with attached back train both with sequin and beaded trims. Includes headpiece, neck collar and arm band. (5 piece set)



Come celebrate with this all American beauty , she's so patriotic, and what a cutie!



Red, white & blue stars and stripes print dress with adjustable length sides. Includes patriotic top hat. (2 piece set)

**Style 8892**

"American Booty"

S, M, L, XL





# accessories

Style 8916, 8908, 9194





**Style 8908**

"Striped Corset"

Black/Red

S, M, L, XL

Fully boned satin corset with red and black striped front panel, bow details, hook & eye back closure and adjustable shoulder straps. (1 piece set)

Black high-low hem satin with organza skirt features multi layered ruffle back detail. (Hat, jewelry, corset cape and thigh highs not included) (1 piece set)

(Shown with) Style 7034 "Fishnet Pantyhose" O/S Black

**Style 9194**

"Burlesque Skirt"

Black

O/S





**Style 8929**  
 "On The Wild Side corset"  
 Black/Pink  
 32, 34, 36, 38

Fully boned velvet corset with leopard print sequin front inset, hook & eye back closure and ruffled neckline trim. Includes removable/adjustable shoulder straps. (2 piece set)  
 (Shown with) Style 6045 "Liquid Leggings" O/S Black



Fully boned bustier with lightly padded underwire cup, sequin fabric front inset and hook & eye back closure. Includes removable/adjustable shoulder straps. (2 piece set)  
 (Shown with) Style 7007 "Tutu Petticoat" O/S Black, White

**Style 8927**  
 "Burlesque Bunny Bustier"  
 Baby Pink  
 32, 34, 36, 38





**Style 8926**

"Victorian Vamp"

Dark Red

32, 34, 36, 38

Fully boned brocade taffeta corset with velvet flock pattern, rhinestone ruffled neckline and front zipper closure. Includes removable/adjustable shoulder straps. (Petticoat not included) (2 piece set)

(Shown with) Style 8964 "Fairytale Petticoat" O/S Black, White



Multi layered sheer mesh petticoat with high-low hemline, satin ribbon detail edging and back bow. (1 piece set)

**Style 8964**

"Fairytale Petticoat"

Black, White

O/S

177



**Style 8895**

“Bandage Corset”

Black, White

S/M, M/L

Stretch elastic bandage style corset with hook & eye back closure.  
(Tutu not included)  
(1 piece set)



**Style 8928**

“Rave and Roses Bustier”

Neon Lime, Neon Pink

32, 34, 36, 38

Fully boned stretch lace bustier with lightly padded underwire cups, and hook & eye back closure. Includes removable/adjustable shoulder and garter straps.  
(Tutu, thigh highs and leggings not included)  
(1 piece set)



**Style 8938**

“Polka Dot Petticoat”

Black/White

O/S

Shear mesh petticoat with stretch waistband, opaque lining and polkadot ruffled hemline.  
(1 piece set)

(Shown with)  
Style 8358  
“Pretty n’ Peasant”  
S/M, M/L  
Black



**Style 5833**

“Kit Dress”

Black, Red

S, M, L, XL

Stretch knit dress with gathered front bustline, removable shoulder straps and ruffle hem. Add costume accessories to this dress to create many different costume options.





**Style 8355**

“All Tied Up”

White

S/M, M/L

Stretch knit plunging neckline skirt with cap sleeve. Great starter shirt for many costume ideas. (Shorts not included) (1 piece set)



**Style 8947**

“Ho Garden Top”

White

S/M, M/L

Off-the-shoulder stretch knit top with blousy shirring all around and satin bow detail on neckline. (Skirt not included) (1 piece set)

**Style 8358**

“Pretty 'n Peasant”

White

S/M, M/L

Sexy off-the-shoulder knit top with elastic ruffled detail and bow accent. Great starter top for many costume ideas. (Leggings not included) (1 piece set)

(Shown with)  
Style 4573  
“Rizzo Legging”  
S/M, M/L  
Black



**Style 8902**

“Peasant Top”

Black

S/M, M/L

Black glossy stretch knit peasant top with sheer sleeves that may be worn on or off the shoulder. (Sword, hat and skirt not included) (1 piece set)



**Style 8931**  
“School Girl Mini Costume Kit”  
Pink/Black  
S/M, M/L

Kit includes stretch knit plaid pleated skirt, elastic adjustable/removable suspenders covered with ruffled lace that clip onto skirt, matching neck tie and hair bows.  
(Top, glasses and thigh highs not included)  
(4 piece set)

(Shown with)  
Style 8355  
“All Tied Up”  
S/M, M/L  
White  
  
Style 7031  
“Sheer Thigh High”  
O/S  
Black, Red, White



**Reversible**



**Style 6586**  
“Schoolgirl/Gangster Kit”  
S, M, L, XL

Pleated reversible plaid Schoolgirl/Gangster pinstripe skirt.  
(Top not included)  
(1 piece set)



**Style 8932**  
“Gaelic Girl Mini Costume Kit”  
Green/Black  
S/M, M/L

Kit includes stretch knit plaid pleated skirt, elastic adjustable/removable suspenders covered with ruffled lace that clip onto skirt, matching bow stocking toppers and hair bows.  
(Mug and thigh highs not included)  
(4 piece set)

(Shown with)  
Style 8947  
“Ho Garden Top”  
S/M, M/L  
White  
  
Style 7031  
“Sheer Thigh High”  
O/S  
Black, Red, White



**Style 8348**  
“Ride 'em Girl”  
Brown  
S/M, M/L

Faux suede cropped vest with tie front closure, western fringe detail and gold star appliqué. Includes mini cowboy hat and wrist cuffs with fringe.  
(Top and shorts not included)  
(3 piece set)

(Shown with)  
Style 8355  
“All Tied Up”  
S/M, M/L  
White





**Style 8347**

“Golden Booty”  
S/M, M/L

Satin brocade vest with stretch knit back and center front gold button closure. Includes head scarf with gold skull screenprint and faux vinyl cross body belt. (Leggings, top and sword not included) (3 piece set)

(Shown with)  
Style 4573  
“Rizzo Legging”  
S/M, M/L  
Black

Style 8358  
“Pretty n’ Peasant”  
S/M, M/L  
White



**Style 9187**

“Sequin Legging”  
Black  
S/M, M/L

stretch knit front and  
back sequin legging.  
(1 piece set)



**Style 8346**

“She’s My Hero”  
O/S

Superhero star studded cape with tie front closure. Includes gold lamé headband and wristband with star screenprint detail. (Dress not included) (3 piece set)



**Style 8936**

“Stars and Stripes  
Starter Dress”  
Multi  
S, M, L, XL

Lightly padded  
underwire cup stretch  
metallic ciré dress  
with adjustable  
shoulder straps.  
(1 piece set)







### Style 8935

"Leopard Kitty Mini Costume Kit"

Black/Brown

S/M, M/L

182

Kit includes capelet with leopard faux fur trimmed hood with pom pom ties, tail, and matching boot covers (Dress not included) (3 piece set)



### Style 8903

"Native Hippie Set"

Brown

O/S

Ultrasuede halter top with adjustable ties, criss-cross neckline, full fringe hem and soft headband. (Shorts not included) (2 piece set)



### Style 8352

"Battalion Babe"

S/M, M/L

Cropped stretch knit vest with zip front closure and wide attached belt detail. Includes matching military hat. (Shorts not included) (2 piece set)

### Style 8906

"Camo Roxie"

Green

S/M, M/L

Stretch knit hot short with elastic waist. (Top and hat not included) (1 piece set)



**Style 8943**

"Rainbow Top"  
Neon Pink  
S/M, M/L

Knit halter top with adjustable ties, rainbow peace sign, and soft headband. (Shorts not included) (2 piece set)

**Style 8905**

"Rainbow Roxie"  
Multi  
S/M, M/L

Foil printed stretch knit hot short with elastic waist. (Top and headband not included) (2 piece set)



**Style 8933**

"Rainbow Ravin' Starter Dress"  
Multi  
S, M, L, XL

Racer back stretch metallic ciré rainbow dress with front zipper. (1 piece set)



**Style 8934**

"Neon Rocker and Raver Starter Dress"  
Hot Pink  
S, M, L, XL

Off-the-shoulder stretch microfiber spandex dress with laser cut slashes. (1 piece set)



**Style 8934**

"Neon Rocker and Raver Starter Dress"  
Neon Green  
S, M, L, XL

Off-the-shoulder stretch microfiber spandex dress with laser cut slashes. (1 piece set)





**Style 9192**

“Rainbow Boot Covers”

Multi

O/S

Bright rainbow  
furry boot covers.



**Style 9193**

“Boot Covers”

Neon Pink

O/S

Furry boot covers.



**Style 9184**

“Two-tone Hood and Glove Set”

Blue, Red

O/S

Bright colored furry  
hood and gloves with  
black tips.



**Style 9008**

“Two-tone Boot Cover”

Blue, Red

O/S

Bright colored furry boot  
covers with black tips.





**Style 8978**

“Neon Fishnet Thigh Highs”

Neon Pink

O/S

Stretch knit large hole  
fishnet thigh highs  
with closed toe and  
wide back seam detail.



Bright rainbow knit thigh highs with daisy detail.

**Style 9195**

“Rainbow Daisy  
Thigh High Socks”

Multi

O/S





**Style 8914**  
 “Bewitching Babe”  
 S, M, L, XL

Black stretch knit witch dress with sheer black gauntlet sleeves. Includes belt and witch hat. (Pantyhose not included) (2 piece set)



**Style 8912**  
 “Flapper”  
 S, M, L, XL

Black dress with fringe on the front and back with adjustable shoulder straps. (Jewelry, boa, cigarette holder, headpiece and pantyhose not included) (1 piece set)

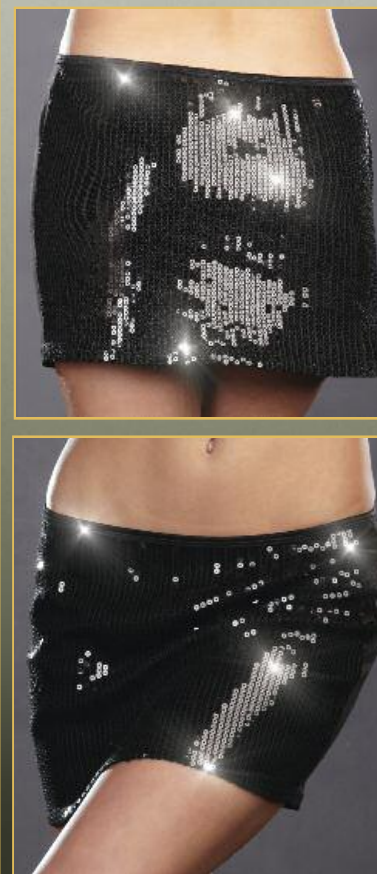
(Shown with) Style 7034 “Fishnet Pantyhose” O/S Black





**Style 8916**  
"Fringe Starter Skirt"  
Black  
S, M, L, XL

Black skirt with fringe on the front and back.  
(Top, jewelry, boa, gloves, cigarette holder, headpiece  
and pantyhose not included) (1 piece set)  
(Shown with) Style 7034 "Fishnet Pantyhose" Black O/S  
Style 7819 "Dominique Glove" Black O/S



**Style 8907**  
"Sequin Starter Skirt"  
Black  
S, M, L, XL

Black A-line skirt with  
sequins on the front  
and back.  
(1 piece set)

Black and white pinstriped halter top  
with attached carnation, center front  
buttoned and red tie. (Jewelry, skirt and  
thigh highs not included) (2 piece set)

**Style 8904**  
"Gangster Kit"  
Black  
S/M, M/L





### Style 8913

"Racer Girl"

Black

S, M, L, XL

188

Black stretch knit dress silver racing check foil printed bodice, racing patch and red contrast trim.  
(Flag not included) (1 piece set)



Zip front football jersey dress with front screen-printed #10 and athletic detailing.  
(Socks, football, hair ribbons not included) (1 piece set)

### Style 8915

"Football Dress"

S, M, L, XL





**Style 8910**

"Cave Girl"

Tan/Animal

S, M, L, XL

One shoulder animal print brushed knit dress.  
(Bone barrette not included) (1 piece set)



**Style 8909**

"Blue Gingham Dress"

Light Blue

S, M, L, XL

Blue and white check dress with white chiffon sleeves.  
(Thigh highs, hair bows, petticoat, dog and basket not included)

(Shown with) Style 6046 "Opaque Thigh High" O/S  
Style 4582 "Ursula Petticoat" O/S



**Style 7001**

“Metallic Dress”

Silver

S, M, L, XL

Stretch metallic foil microfiber dress. Add costume accessories to this dress to create different costume options.  
(1 piece set)



**Style 5832**

“Basic Dress”

Black

S, M, L, XL

Stretch microfiber dress with internal stretch bra. Add costume accessories to create different costume options.  
(1 piece set)



**Style 6050**

“Sequin Starter Dress”

Black, Red, Silver

S, M, L, XL

Fully lined stretch sequin dress with internal stretch bra. Add costume accessories to create different costume options.  
(1 piece set)



**Style 6582**

“Kitty Kit”

O/S

Includes cat ear headband, cat collar with bells and pin on tail.  
(Dress not included)  
(3 piece set)



**Style 6583**

“Leopard Dress”

S, M, L, XL

Gold foil leopard print dress. Add costume accessories to create different costume options.  
(Kitty Kit not included)  
(1 piece set)



**Style 7791**

“Glam Short”  
Black, Silver, Red  
S/M, M/L

Knit boy shorts with front and back sequins.



**Style 7789**

“What’s Shakin”  
Black  
S, M, L, XL

Knit boy shorts with multi layers of front and back fringe.



**Style 4573**

“Rizzo Legging”  
Black  
S/M, M/L

Basic stretch knit crop legging.



**Style 6584**

“Getting Ripped Legging”  
Black  
S/M, M/L

Stretch microfiber legging with multiple slits.



**Style 6045**

“Liquid Legging”  
Black  
S/M, M/L

Glossy stretch knit legging.





**Style 4578**

“Angel Petticoat”  
Black, Red, White  
O/S

Single layer tulle  
petticoat with three  
lace ruffles.



**Style 4582**

“Ursula Petticoat”  
Black, White  
O/S

Multi layer tulle  
petticoat with three  
lace ruffles.



**Style 7846**

“Light-Up Tutu”  
Black, White  
O/S

Light-up tutu  
interlaced with fiber  
optic lights with  
hidden pocket for  
on/off switch.  
Batteries and  
instructions included.



**Style 7007**

“Tutu Petticoat”  
Black, White  
O/S

Multi layered tulle  
tutu petticoat with  
elastic band.





**Style 0072**

"Basic Unitard"

Black

S/M, M/L, 1X/2X, 3X/4X

Cotton/Spandex  
adjustable strap  
unitard.



**Style 5229**

"Patty Panty"

Black, Red, White

S/M, M/L

Stretch mesh ruffle  
panty.



**Style 4575**

"Roxie Hot Short"

Black, Hot Pink, Nude,  
Red, White

S/M, M/L, 1X/2X, 3X/4X

Basic stretch knit hot  
short with elastic  
waist.  
(Hot Pink  
not available in Plus)





**Style 6379**  
“Men’s Basic Pant”  
Black, Navy, White  
M, L, XL, XXL

Men’s basic pant with elastic waistband and pockets.



**Style 7034**  
“Fishnet Pantyhose”  
Black  
O/S

Fishnet pantyhose with back seam.  
100% Nylon

**Style 7030**  
“Sheer Thigh High”  
Black, White  
O/S, O/S Queen

Sheer thigh high with stay up silicone lace top.  
85% Nylon  
15% Spandex



**Style 7031**  
“Sheer Thigh High”  
Black, Red, White  
O/S

Sheer thigh high with back seam.  
100% Nylon





Style 7794

"Galaxy Glove"  
Gold, Silver  
O/S

Metallic opera length gloves.



Style 7819

"Dominique Glove"  
Black  
O/S

Shiny stretch knit opera length glove



Style 7797

"Metallic Bootcovers"  
Silver  
O/S

Metallic shoe and boot covers.



Style 5218

"Luna Glove"  
Black, White  
O/S

Stretch satin opera length gloves.







**Style 8896**  
 "Frankie Wig"  
 Black/White  
 O/S  
 Light-up black/white synthetic hair wig in Frankenstein cut with hidden pocket with on/off switch. Batteries and instructions included. (1 piece set)



**Style 8897**  
 "Cleo Light-Up Wig"  
 O/S  
 Black bob style wig with fiber optic lights and hidden pocket for on/off switch. Batteries and instructions included. (Beaded headpiece not included) (1 piece set)



**Style 8965**  
 "Rocker Wig"  
 Brown  
 O/S  
 Light-up brown mullet style synthetic wig with hidden pocket for on/off switch. Batteries and instructions included.





**Style 9191**

"Light-Up Long Wig"

Green

O/S

Light-up long green synthetic wig with hidden pocket with on/off switch. Batteries and instructions included. (Hair bow, jewelry and top not included) (1 piece set)



**Style 8898**

"Light-up Pixie Wig"

Green

O/S

Light-up green synthetic hair wig in bob cut with hidden pocket with on/off switch. Batteries and instructions included. (1 piece set)



light up wig



light up wig



Bright multi-color light-up cyber locks with bow trim with hidden pocket with on/off switch. Batteries and instructions included. (Blue wig not included) (1 piece set)

**Style 8894**

"Kandie Kid Wig"

Multi

O/S



**Style 7793**

“Hot Pink Wig”

O/S

Synthetic hair wig in a bob cut.  
(1 piece set)

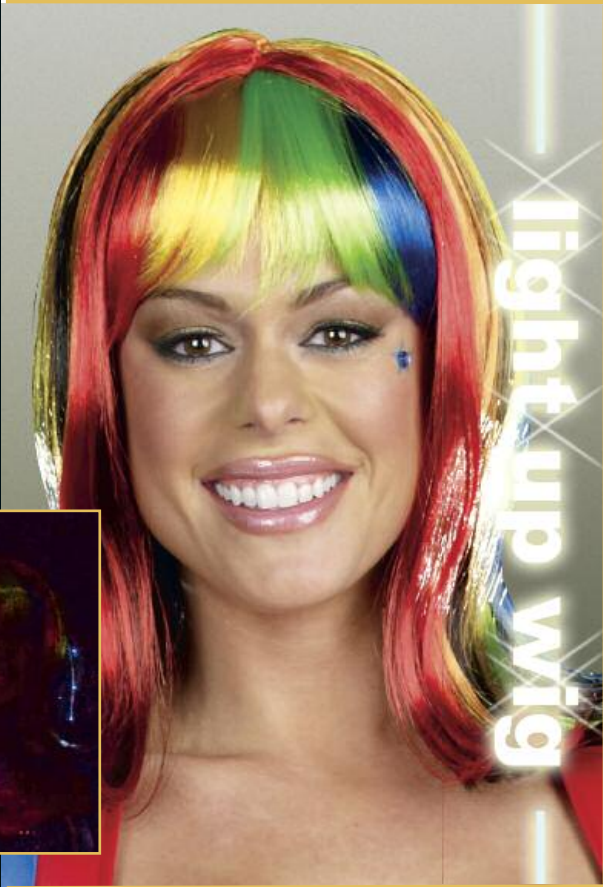


**Style 7840**

“Light Up Rainbow Wig”

O/S

Light-up multi colored synthetic hair wig interlaced with innovative fiber optic lights and hidden pocket with on/off switch. Batteries and instructions included.  
(1 piece set)



**Style 7798**

“Silver Wig”

O/S

Synthetic hair wig in a bob cut.



**Style 8314**

“Light-Up Afro Wig”

O/S

Light-up afro wig interlaced with innovative fiber optic lights and hidden pocket with on/off switch. Batteries and instructions included.  
(1 piece set)



**Style 8349**


“Light-Up Blue Wig”

O/S

Light-up blue wig interlaced with innovative fiber optic lights and hidden pocket with on/off switch. Batteries and instructions included.  
(1 piece set)





Sugar  
Sugar  by Dreamgirl™

Kids



Style 9024 & 9001



Style 9024

“Fur-Ocious Lil’ Creature”  
Kids  
S, M, L

Dress with ruffle short sleeves with a faux fur center front panel and triple ruffled skirt with attached monster tail. Faux fur monster hood with multi color spikes with contrast color pom poms. Includes faux fur fingerless gloves and boot covers. (Wig and tights not included)

(4 piece set)



Style 9050

“Majestic Giggles”  
Kids  
S, M, L

Contrast patterned knit dress embellished with sequin hearts and a high-low hemline accented with a metallic jagged peplum. Includes matching leggings, headband with jester accents, puff sleeves and ruffle neckband.

(5 piece set)



Style 9030

“Gypsy Princess”  
Kids  
S, M, L

Knit peasant styled dress with metallic printed velvet skirt embellished with gold trim. Includes hip scarf, satin neckband and headscarf with coin trim. (Bangles not included)

(4 piece set)





#### Style 9034

"Lil' Delightful Hocus Pocus"  
Kids  
S, M, L

Glossy knit dress with fully lined tutu skirt trimmed with multi color ruffle and satin ribbon details. Includes mini multi color witch hat and satin neckband.  
(Wrist gauntlets and tights not included)

(3 piece set)



#### Style 9016

"Cleo Cutie"  
Kids  
S, M, L

Glossy knit dress with colorful hieroglyphic falcon printed bodice embellished with gold trim. Includes matching printed leggings, headband and arm cuffs.  
(Wig not included)

(4 piece set)





#### Style 9054

"Foxy & Sly"  
Kids  
S, M, L

Faux fur accented knit dress with fully lined pettiskirt, contrast pompoms and attached foxtail. Includes matching faux fur hood and fingerless gloves.  
(Tights and boot covers not included)

(3 piece set)



#### Style 9020

"Gigi Giraffe"  
Kids  
S, M, L

Sleeveless printed velvet dress with a faux fur hemline and attached tail. Hooded capelet with three dimensional giraffe head and contrast color pom poms. Includes matching printed boot covers. (Tights not included)

(3 piece set)







**Style 9025**  
 "Rockin' Cheetah"  
 Kids  
 S, M, L

Sleeveless animal printed velvet jumpsuit, separate three dimensional hoodie and shrug with jaguar face and contrast pom poms. Includes double layer tutu embellished with grommets, attached tail and paw print gloves.

(4 piece set)



**Style 9029**  
 "Cave Cutie"  
 Kids  
 S, M, L

Animal printed knit dress with a jagged hemline and faux fur asymmetrical top with attached belt. Includes printed hair bow, wrist cuffs and faux fur boot covers.

(5 piece set)



Style 9026

“Gangster Doll”  
Kids  
S, M, L

Pinstriped dress accented with hot pink satin ruffle skirt. Includes matching leggings, hat and French cuffs.

(4 piece set)



Style 9015

“Mod Cutie”  
Kids  
S, M, L

Glossy knit dress with geometric color blocking and attached belt. Includes matching geometric headband.

(2 piece set)



Style 9027

“Snowflake Princess”  
Kids  
S, M, L

Hooded velvet dress with snowflake printed organza skirt, faux fur hemline with silver metallic trim and pom pom detail. Includes snowflake wand, matching gloves and faux fur boot covers.

(4 piece set)



**Style 8282**

"Pretty in Poodle"  
Kids  
S, M, L

Dress with an all over flocked poodle pattern circle skirt with attached sequin belt. Satin bomber jacket, neck scarf and hair bow included. (All other accessories not included)

(3 piece set)



**Style 8385**

"Peace Baby"  
Kids  
S, M, L

Printed knit A-line mini dress with bell sleeves features innovative LED light-up peace sign on bodice with hidden pocket for on/off switch. Micro suede fringe vest and belt are attached. Includes printed headband and sunflower. (Instructions and batteries included)

(3 piece set)



**Style 7721**

"Eskimo Cutie"  
Kids  
S, M, L

Zipper front stretch crushed velvet dress with faux fur trimmed hood with pom pom ties. Includes mittens, faux fur trimmed boot cover and faux chocolate popsicle. (Petticoat not included)

(6 piece set)



**Style 8274**

"Rodeo Star"  
Kids  
S, M, L

Micro suede dress with sequin star embellishments, gingham bottom ruffle, puff sleeves, attached belt. Includes gingham scarf, hair bows, fringed wrist cuffs and sequin embellished mini cowgirl hat.

(5 piece set)





Style 8374

"Halloween Cuties"  
Kids  
XS, S, M

- WITCH
- DARK BALLERINA
- BAT

Knit leotard with satin bow and organza ruffle details, organza hair scrunchie, reversible satin skirt with lace trim, mesh long slit sleeves, satin choker, mini witch hat, bat wings, bat headband with lace trim, gauntlets. (Tights not included) (Instructions included)

(9 piece set)



3 in 1 costumes



Style 8371

"High Spirits"  
Kids  
XS, S, M

- CHEERLEADER
- GYMNAST
- PIRATE

Knit leotard with gold stars, 2 hair ties, headband, pirate sleeve puffs, money pouch, convertible pirate tutu dress turns into pleated cheerleader skirt, arm cuffs, hair bow. (Tights and knee socks not included) (Instructions included)

(8 piece set)



3 in 1 costumes







# 3 in 1 costumes

## Style 8375

"Storybook Beauties"  
Kids  
XS, S, M

- RENAISSANCE PRINCESS
- BALLERINA
- FLOWER FAIRY

Knit leotard with decorative rosettes, flower hair bow, long slit sleeves, sequin headpiece with veil, convertible princess dress turns into a ruffled fairy skirt, fairy wings, sleeve puffs, flower wand, metallic gold choker. (Tights not included) (Instructions included)

(9 piece set)



## Style 8383

"Wild Lil' Thang"  
Kids  
S, M, L

Velvet zebra printed hooded dress with contrast hot pink accents and attached tail. Includes velvet faux fur trimmed leg warmers.

(2 piece set)



## Style 8266

"Precious Lil' Panda"  
Kids  
S, M, L

Sleeveless dress with velvet bodice, 3 tiered ruffle organza skirt and attached cotton tail. Faux fur trimmed hooded capelet with ears and pom poms attached. Includes paw printed fingerless gloves and faux fur trimmed leg warmers.

(4 piece set)





Style 8276

“Enchanted Lil’ Unicorn”  
Kids  
S, M, L

Velvet hooded dress with ombré flecked gold skirt and attached tail. Hood features gold sequin horn and ombré mane. Includes whimsical ombré ruffled leg warmers and faux fur trimmed velvet gauntlets. (Tights not included)

(3 piece set)



light up costume

Style 8275

“Sweetheart Skeleton”  
Kids  
S, M, L

Glossy knit top with innovative LED light-up skeleton appliqué on bodice and hidden pocket for on/off switch, accented with tulle flair sleeves, attached belt and tutu skirt. Includes printed leggings and fingerless gloves. (Instructions and batteries included)

(3 piece set)



Style 7719

“Busy Lil’ Bee”  
Kids  
S, M, L

Stretch knit striped dress with shirred neckline, puff sleeves and layered skirt with innovative yellow fiber optic lights with hidden pocket for on/off switch. Includes antennae headband and wings. (Tights not included) (Instructions and batteries included)

(3 piece set)



light up costume



Style 8373

“Cute as Gold”  
Kids  
S, M, L

Fun skull all over printed knit dress with flutter sleeves and tulle skirt accented with metallic gold trim. Skirt includes innovative white fiber optic lights with a hidden pocket for on/off switch. Includes gold trim choker, skull printed bandana and gauntlets. (Tights not included) (Instructions and batteries included)

(4 piece set)



light up costume





# Sugar Sugar r by Dreamgirl Juniors



Style 8997





### Style 8997

"Hip Hop Queen"  
Juniors  
XS, S, M, L

Multi animal printed dress with rainbow tutu skirt with sequin trim. Includes matching printed leggings, headband with multi color bow and crown "HIP HOP" faux microphone. (Wig and jewelry not included)

(4 piece set)



### Style 9001

"Fur-Ocious Creature"  
Juniors  
XS, S, M, L

Dress with ruffle short sleeves with a faux fur center front panel and triple ruffled skirt with attached monster tail. Faux fur monster hood with multi-color spikes and contrast colored pom poms. Includes faux fur fingerless gloves and boot covers. (Wig and tights not included)

(4 piece set)





### Style 9048

"Delightful Hocus Pocus"  
Juniors  
XS, S, M, L

Glossy knit dress with fully lined tutu skirt trimmed with multi-color ruffle and satin ribbon details. Includes mini multi color witch hat and satin neckband.  
(Wrist gauntlets and tights not included)

(3 piece set)



### Style 9002

"Gypsy Princess"  
Juniors  
XS, S, M, L

Knit peasant styled dress with metallic printed velvet skirt embellished with gold trim. Includes hip scarf, satin neckband and headscarf with coin trim.  
(Jewelry not included)

(4 piece set)





**Style 8989**

"Dark Shadow"  
Juniors  
XS, S, M, L

Long gothic vampire jacket embellished with lace and stand up collar worn over a printed velvet dress. Includes buckle front belt, neckband and mini hat. (Wrist gauntlets and tights not included)

(5 piece set)



**Style 8988**

"Royal Vamp"  
Juniors  
XS, S, M, L

Vampire flocked satin dress with fully lined high-low hemline, corset style bodice with gothic buckle details and stand up collar. Includes wrist gauntlets, satin neckband and headband. (Tights not included)

(4 piece set)





**Style 8986**

"Full Moon Sass"  
Juniors  
XS, S, M, L

Faux fur trimmed crushed velvet hooded dress with jagged edge plaid front panel, pom pom ties, attached ears and tail. Includes matching faux fur fingerless gloves and boot covers.

(3 piece set)



**Style 9005**

"Trouble Maker"  
Juniors  
XS, S, M, L

Prisoner striped knit dress with attached tattoo sleeves and buckle detail on attached belt. Includes matching leggings, neckband, hat and money bag.

(5 piece set)





**Style 8987**

"Jewel of the Nile"  
Juniors  
XS, S, M, L

Elaborate sequin knit metallic high-low hem dress with attached belt. Includes gold arm cuffs and stretch sequin headband. (Wig not included)

(3 piece set)



**Style 8994**

"Gladiator Beauty"  
Juniors  
XS, S, M, L

Roman inspired metallic pattern dress with attached corset and cape, embellished with silver buckles and studded neckline. Includes matching wrist gauntlets and studded headband. (Boot covers not included)

(3 piece set)





### Style 8996

"Goin' Gangsta"  
Juniors  
XS, S, M, L

Stretch knit dress with contrast binding. Pinstriped long jacket with attached sequin carnation pin. Includes belt with buckles, satin collar with sequin necktie, wrist cuffs and fedora. (Tights not included)

(6 piece set)



### Style 8995

"Jazzy Flapper"  
Juniors  
XS, S, M, L

Stretch knit dress with tiered fringe skirt, exquisite sequin and rosette neckline. Includes stretch sequin headband with feather and matching fingerless gloves.

(3 piece set)



**Style 8258**

“Peace Baby!”  
Juniors  
XS, S, M, L

Printed knit A-line mini dress with bell sleeves features innovative LED light-up peace sign on bodice with hidden pocket for on/off switch. Micro suede fringe vest and belt are attached. Includes printed headband and sunflower. (Instructions and batteries included)

(3 piece set)



**Style 8535**

“Goddess of Glam”  
Juniors  
XS, S, M, L

Shimmery knit overlay wrap dress with mesh flower embellishment. Decorative mesh cape is attached. Includes flower trimmed headband and metallic gold arm cuffs. (3 piece set)

(3 piece set)



**Style 8992**

“Groovy-licious Doll”  
Juniors  
XS, S, M, L

Foiled knit disco pattern A-line dress with bell shape long sleeves with silver metallic trim. Includes matching head band.

(2 piece set)





### Style 9003

"Pandalicious"  
Juniors  
XS, S, M, L

Two tone knit dress with tiered ruffle hemline. Includes hooded panda shrug with pom pom ties and fingerless paw print gloves. (Boot covers and tights not included)

(3 piece set)



### Style 8369

"Wild Thang"  
Juniors  
XS, S, M, L

Velvet zebra printed hooded dress with attached tail, attached gloves and accented with faux fur trim. Includes faux fur trimmed velvet leg warmers.

(2 piece set)



### Style 7008

"Pretty Lil Kitty"  
Juniors  
XS, S, M, L

Zip front leopard print stretch crushed velvet dress with faux fur trimmed hood and hem with attached faux fur trimmed ears and tail with satin bow. (Petticoat not included)

(1 piece set)





**Style 7009**

“Busy Lil’ Bee”  
Juniors  
XS, S, M, L

Peasant style stretch knit striped dress with gloss stretch knit foam padded bust area and tutu style layered skirt featuring unique yellow fiber optic lights and hidden pocket for on/off switch. Includes headband with antennae and wings with gold glitter detail. (Instructions and batteries included)  
(Leggings not included)

(3 piece set)



**Style 8534**

“In the Jungle”  
Juniors  
XS, S, M, L

Velvet hooded dress with faux fur trim and attached scarf with paw print mittens. Includes faux fur trimmed velvet leg warmers.

(2 piece set)



**Style 8336**

“Touchdown Cutie”  
Juniors  
XS, S, M, L

Knit top with tricot mesh shoulder pads and sequin number appliqué. Includes leggings, satin football purse, fingerless gloves, striped athletic socks and satin hair bows.

(6 piece set)





**Style 9006**

"All Star Sweetie"  
Juniors  
XS, S, M, L

Knit top embellished with "ALL STARS" sequin appliqué. Includes leggings, hat, athletic socks, fingerless gloves and belt.

(6 piece set)



**Style 8999**

"Referee Cutie"  
Juniors  
XS, S, M, L

Stretch striped top embellished with a sequin heart "REF" appliqué and contrast color binding. Includes leggings, soccer ball purse, striped athletic socks, satin hair bows and whistle.

(6 piece set)



**Style 7711**

“Yo! Mummy”  
Juniors  
XS, S, M, L

Long sleeve scoop neck knit dress with ripped rag detail, nude lining and uneven hem with adjustable drawstring detail. Includes head wrap and matching ripped rag stockings.

(4 piece set)



**Style 8283**

“Sassy Ninja”  
Juniors  
XS, S, M, L

Metallic dragon print hooded top with mesh sleeves and face mask with snap closure. Pants have contrast binding and bows. Includes Asian frog removable belt, mesh fingerless gloves and nunchucks.

(5 piece set)



**Style 6570**

“Twilight Bite”  
Juniors  
XS, S, M, L

Stretch knit dress with contrast burgundy scalloped edge neckline. Includes iridescent satin black/burgundy stand-up collar cape with scalloped edge, adjustable shoulder straps with hooks, belt with pentagram and chain details, neckband with ring and vampire fangs(not shown). (Tights not included)

(5 piece set)



**Style 8259**

“Gothic Fairytale Princess”  
Juniors  
XS, S, M, L

Satin dress with fitted bodice and bubble skirt accented with lace trim. Includes satin cape with stand up lace overlay collar, sleeves with lace flounce and satin bow headband with rhinestone detail. (Wig, apple and knee socks not included)

(4 piece set)







#### Style 8284

"Lollipop Sensation"  
Juniors  
XS, S, M, L

Lollipop printed knit dress embellished with sequin heart appliques and attached petticoat with back multi-layer detail. Includes satin neckband with ric rac trim, candy striped fingerless gloves, giant lollipop microphone and sequin heart applique headband with tulle. (Wig and leggings not included)

(5 piece set)

## Reversible



#### Style 6565

"Mad About You"  
Juniors  
XS, S, M, L

Fully reversible stretch knit dress with ruffled hem and removable/adjustable shoulder straps. Includes hat, bow tie neckband, cat ear headband, cat bell neckband, bow pin, belt and removable cat tail. (Gloves and legging not included)

(10 piece set)



#### Style 7013

"Switch Witch"  
Juniors  
XS, S, M, L

Stretch velvet peasant style dress with adjustable side satin ribbon lace-up detail, satin skull print neckline, off-the-shoulder sleeves, jagged hem skirt with purple fiber optic lights and hidden pocket for on/off switch.

Includes mini witch hat and light-up wand. (Knee socks not included) (Instructions and batteries included)

(3 piece set)



light up costume



**Style 7752**

“Tribal Beauty”  
Juniors  
XS, S, M, L

Brown micro suede stretch dress with intricate Native American beading and layered fringe hem. Includes matching Native American beaded headpiece with feathers.

(2 piece set)



**Style 6041**

“Eskimo Cutie Pie”  
Juniors  
XS, S, M, L

Zipper front stretch crushed velvet dress with faux fur trimmed hood with pom pom ties. Includes mittens, faux fur trimmed boot covers and faux chocolate popsicle. (Petticoat not included)

(4 piece set)



**Style 6559**

“Robyn Da Hood”  
Juniors  
XS, S, M, L

Ruffle hem dress and faux suede waist corset. Includes hat, lace-up gauntlets and drawstring bag.

(5 piece set)



**Style 6571**

“Pretty Pixie”  
Juniors  
XS, S, M, L

Metallic microfiber iridescent dress with a sequined gold decorative appliqué, uneven hem with gold sequin accents. Includes pixie dust purse, gold headband, wand and light-up wings. (Instructions and batteries included)

(5 piece set)





**Style 9041**

"Glam Sequin Leotard"  
Kids  
S, M, L  
Black, Hot Pink

Sequin front knit leotard.



**Style 9039**

"Majestic Pettiskirt"  
Kids  
O/S

Triple color layered tulle skirt  
embellished with sequin  
hemlines.



**Style 9042**

"Glam Sequin Legging"  
Kids  
S/M, M/L  
Black, Hot Pink

Sequin front knit legging.



**Style 9040**

"Glam-Tastic Pettiskirt"  
Kids  
O/S  
Black, Gold

Sequin top layer skirt with an  
under tulle layer.





**Style 9234**

“Fun-Tastic Triple Color  
Headband and Leg Warmers Set”  
Kids  
O/S

A set of triple colored layer tulle  
headband and leg warmers.

**Style 9035**

“Fun-Tastic Triple Color Tutu”  
Kids  
O/S

Triple colored layer tulle tutu.

**Style 9234**

“Fun-Tastic Triple Color  
Headband and Leg Warmers Set”  
Kids  
O/S

A set of triple colored layer tulle  
headband and leg warmers.



**Style 9038**

“Fun-Tastic Solid Color Tutu”  
Kids  
O/S  
Hot Pink, Lime Green, Turquoise

Triple layered solid color tulle  
tutu.





**Style 9046**

"Glam Sequin Legging"  
Juniors  
S/M, M/L  
Black, Hot Pink

Sequin front knit legging.



**Style 9183**

"Glam-Tastic Pettiskirt"  
Juniors  
O/S  
Black, Gold

Sequin top skirt with an under tulle layer.



**Style 7020**

"Rachael Legging"  
Juniors  
S/M, M/L

Stretch microfiber crop length legging.



**Style 6581**

"Alice Tights"  
Juniors  
O/S

Striped tights.





**Style 9010**

"Fun-Tastic Triple Color Tutu"  
Juniors  
O/S

Triple colored layer tulle tutu.



**Style 9013**

"Fun-Tastic Solid Color Tutu"  
Juniors  
O/S  
Hot Pink, Lime Green, Turquoise

Triple layered solid color tulle  
tutu.





# plus

# Costumes



**Style 8198X**

“Hot On The Trail”

S, M, L, XL, 1X/2X, 3X/4X

Native American styled  
ultra suede fringed dress  
with colorful bead  
neckline detail. Includes  
elaborately beaded  
Native American belt  
and head piece.  
(3 piece set)





### Style 8759X

"Warrior Princess"

S, M, L, XL, 1X/2X, 3X/4X

Red and gold convertible dress with jeweled neckline. The strategically placed zipper across skirt hemline allows the dress to go from ankle length to short and sexy. Once unzipped, the bottom of the dress can be worn as a cape. Headpiece included. (Sword not included) (2 piece set)



### Style 8123X

"Golden Gladiator"

S, M, L, XL, 1X/2X, 3X/4X

Crinkled foil lamé dress with elaborate sequin and stud adorned warrior neckline appliqué and attached sheer chiffon cape. Includes faux vinyl studded waist corset with boning, dagger and Roman trim headpiece. (3 piece set)



### Style 6422X

"Babe-A-Lonian Warrior Queen"

S, M, L, XL, 1X/2X, 3X/4X

Metallic brown stretch knit dress has exquisite sequined appliqué with bead detail and attached chiffon cape. Metallic gold foil detailing on waistband, along hem of skirt sections and on gauntlets. Includes headpiece with bead detail. (4 piece set)



**Style 8217X**

"Can-Can in Paris"

S, M, L, XL, 1X/2X, 3X/4X

Corset style dress with lightly padded underwire cups embellished with sequin and satin trim and attached multi layered ruffle skirt with back bustle. Includes adjustable/removable garters, mini hat and choker. (Thigh highs and gloves not included) (3 piece set)



**Style 8113X**

"Starry Night Witch"

S, M, L, XL, 1X/2X, 3X/4X

Easy to wear tube style dress features exquisite cutting-edge reversible sequins which can be changed from black to silver, tutu tulle skirt with star printed detail and matching separate jacket. Includes witch hat with sheer veil and silver star wand. (4 piece set)



20's style dress with reversible black/red dangling paillettes and black beaded neckline. Stretch sequin headpiece with ostrich feather included. (Jewelry, boa, cigarette holder, gloves and pantyhose not included) (2 piece set)

**Style 8812X**

"Dames Like Us"

S, M, L, XL, 1X/2X, 3X/4X



**Style 8188X**

“Mobster Boss”

S, M, L, XL, 1X/2X, 3X/4X

Gangster pinstripe knit dress with sexy peak-a-boo scalloped lace neckline and matching shorts. Includes hat with feather, belt, carnation pin and choker. (6 piece set)



**Style 6457X**

“All That Jazz Flapper”

S, M, L, XL, 1X/2X, 3X/4X

Stretch knit dress with tiered fringe and beaded neckline. includes stretch sequin headband with feathers, choker and boa. (Fishnets and gloves not included) (4 piece set)



**Style 8401X**

“Ain’t Misbehavin’”

S, M, L, XL, 1X/2X, 3X/4X

Sequin 1920's inspired flapper dress with Art Deco styling has layered full fringe bottom. Includes sequin head piece with ostrich feather and cigarette holder. (Boa, pantyhose, gloves and jewelry not included) (3 piece set)



**Style 8184X**

“Flap Happy”

S, M, L, XL, 1X/2X, 3X/4X

Silver satin dress with beaded 1920's inspired neckline detail. Layers of silver metallic fringe adorn both front and back. Includes sequined headpiece with feather, choker and cigarette holder. (Boa not included) (4 piece set)





**Style 8815X**

"Queen of Thrones"

S, M, L, XL, 1X/2X, 3X/4X

Purple velvet embroidered and sequined gown with satin lined Renaissance sleeves and high-low hem. Gown is trimmed with gold sequins throughout. Velvet and gold headpiece with veil included. (2 piece set)



**Style 8126X**

"Naughty on the Nile"

S, M, L, XL, 1X/2X, 3X/4X

Holographic golden prism stretch microfiber dress with keyhole jeweled neckline and adjustable length hemline. Includes belt with hieroglyphic details and adjustable beaded headpiece with Asp detail. (3 piece set)



Goddess dress with gold sequined embroidery and gold trim. The strategically placed zipper across skirt hemline allows the dress to go from ankle length to short and sexy. Once unzipped, the bottom of the dress can be worn as a cape. Rhinestone headpiece and arm bands included. (3 piece set)



**Style 8861X**

"Goddess of Love, Aphrodite"

S, M, L, XL, 1X/2X, 3X/4X



**Style 8796X**

“Tippin’ Teepees”

S, M, L, XL, 1X/2X, 3X/4X

Versatile stretch faux suede dress with Native American style brocade ribbon details. Neckline can be worn 4 ways. Includes matching boot covers and feather headdress. (Tomahawk not included) (3 piece set)



Convertible



**Style 8216X**

“Giddy Up!”

S, M, L, XL, 1X/2X, 3X/4X

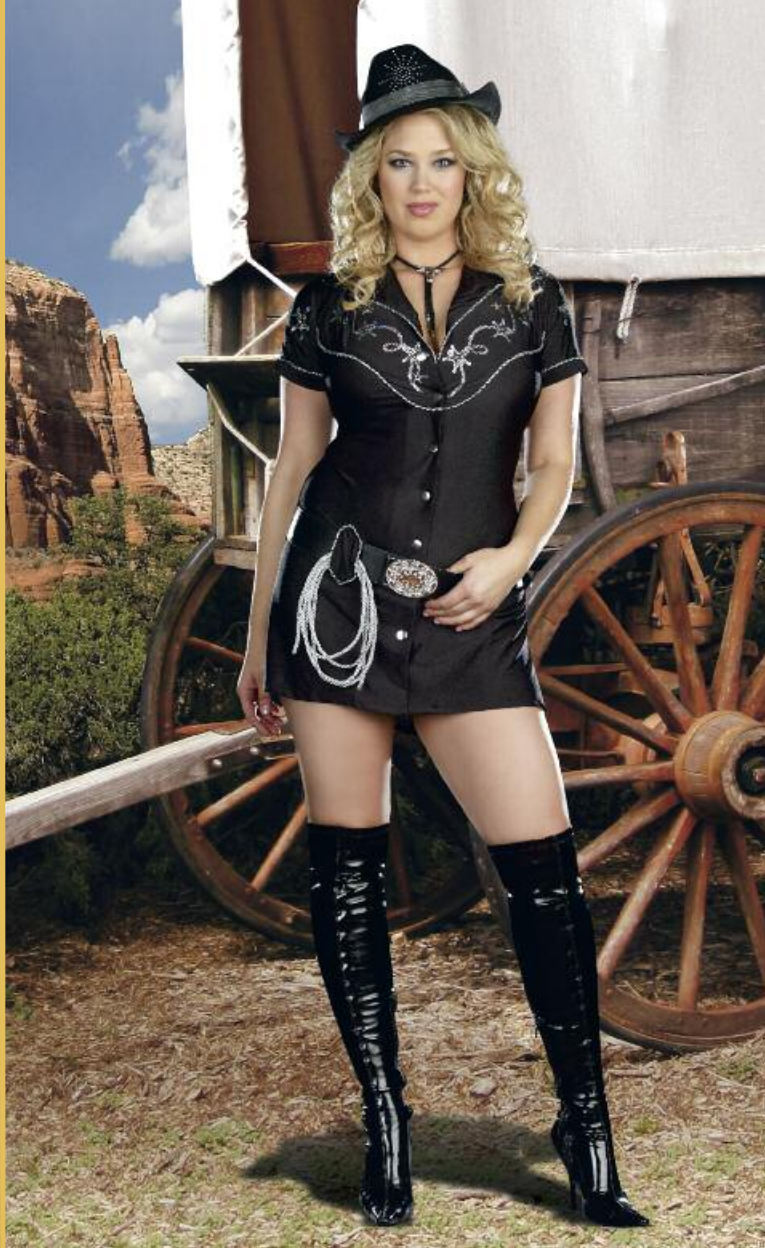
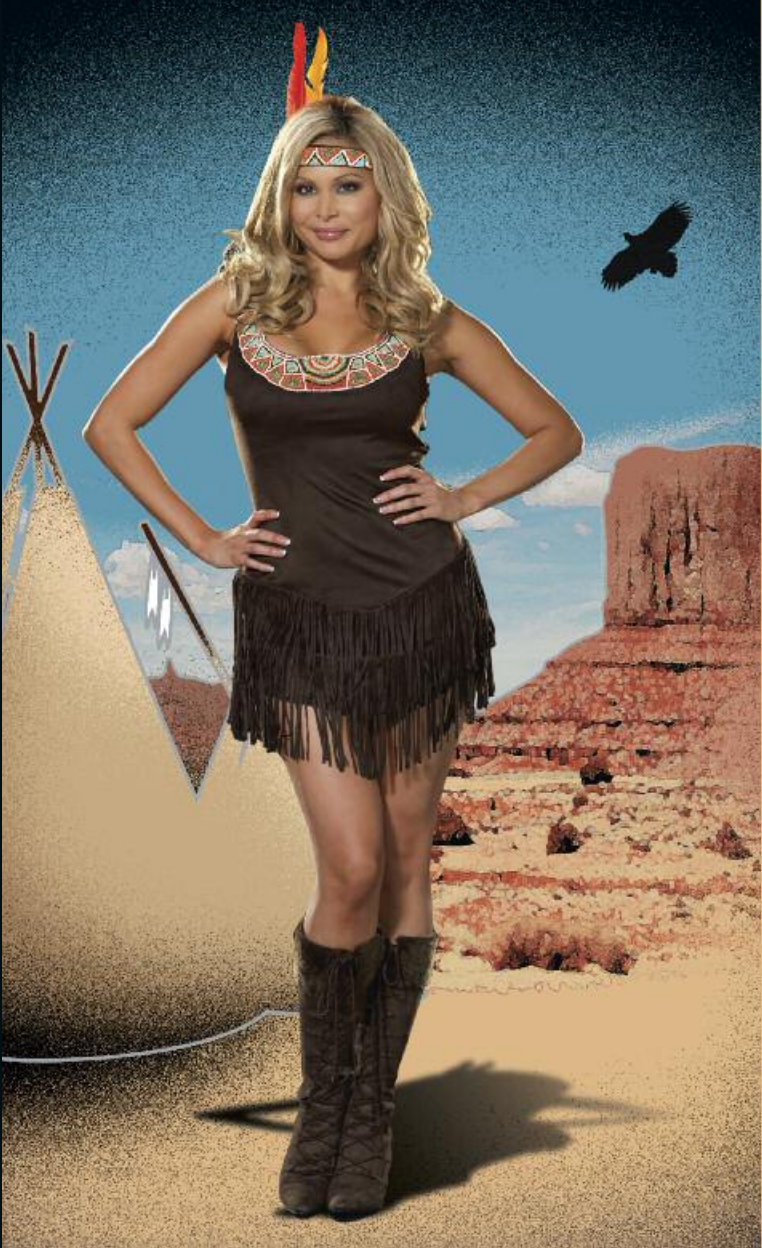
Western styled ultra suede cowgirl dress with hook & eye front closure, star grommets, fringe and lace-up detailing. Includes cowboy hat, neck scarf and pin. (4 piece set)

**Style 5877X**

“Pocahottie”

S, M, L, XL, 1X/2X, 3X/4X

Faux suede dress with intricate beaded neckline and layered fringe hem. Includes matching beaded headpiece with feathers. (2 piece set)



**Style 4605X**

“Rhinestone Cowgirl”

S, M, L, XL, 1X/2X, 3X/4X

Stretch knit western style snap front dress with rhinestone belt and hat. Includes silver lasso and bolo tie necklace. (5 piece set)



**Style 8783X**

"Bear Hugs"

S, M, L, XL, 1X/2X, 3X/4X

Stretch velvet dress with double ruffle hemline, faux fur neckline detail and bear tail. Includes separate hooded jacket with teddy bear face, mittens with paw print, removable/adjustable shoulder straps and matching faux fur boot covers. (5 piece set)



*She lets out a growl when she's on the prowl.*

**Style 7497X**

"Big Bad Sexy Wolf"

S, M, L, XL, 1X/2X, 3X/4X

Zipper front stretch crushed velvet dress with faux fur trimmed hood with pom pom ties, attached ears and tail. Includes faux fur trimmed boot covers. (2 piece set)



Leopard print stretch crush velvet hooded dress with fur trim and removable tail. Includes boot covers. (3 piece set)



**Style 8760X**

"Cheetah-licious"

S, M, L, XL, 1X/2X, 3X/4X



**Style 8115X**

“Pirate’s Passion”

S, M, L, XL, 1X/2X, 3X/4X

Peasant style skull print stretch knit and velvet bodice has puff sleeves that can be worn on or off the shoulders, adjustable halter neckline with flattering bust ruching and innovative satin skirt with light-up skull appliqués at hemline. Includes matching skull print head scarf with coin trim, batteries and instructions. (Sword and petticoat not included) (2 piece set)



light up costume

**Style 8186X**

“Rockin’ the Boat”

S, M, L, XL, 1X/2X, 3X/4X

Pin-up corset styled dress with flirty ruffled lightly padded underwire cups, metallic gold trim and gold sequin anchor appliqué. Matching shrug with sailor collar accented with metallic gold trim and sequin anchor appliqué. Includes sailor hat with sequin anchor. (Petticoat not included) (3 piece set)



**Style 5923X**

“Pirate Wench”

S, M, L, XL, 1X/2X, 3X/4X

Stretch knit peasant off-the-shoulder dress with cut-out and lace-up sleeves with ruffle hem. Includes removable vinyl boned waist corset with front lace-up and hook & eye back closure. Includes head scarf with silver skull & cross bones, faux sword and “Pirate Booty” drawstring pouch. (5 piece set)



**Style 5985X**

“Makin’ Waves”

S, M, L, XL, 1X/2X, 3X/4X

Stretch knit dress with lightly padded underwire cups, contrast navy piping and gold foil bows on neckline and gold foil bow hem trim with printed anchor accents. Includes matching long sleeved shrug with foil star detail and sailor hat with anchor and gold foil bow. (3 piece set)





Style 8179X

"Nurse Juana B. Sedated"  
S, M, L, XL, 1X/2X, 3X/4X

Nurse dress has a sexy low cut neckline with both front and back hem length adjustability. Ruffled back detail accentuates curves. Includes nurse hat, apron, "Nurse Juana B. Sedated" nameplate and stethoscope. (Thigh highs not included)  
(5 piece set)



Style 8211X

"Maid To Order"  
S, M, L, XL, 1X/2X, 3X/4X

Ruffled pinafore apron with vintage Parisian print of polka dots and attached to black knit dress with sheer sleeves and large back bow. Includes removable/adjustable garters with bows, headpiece and feather duster. (Thigh highs not included)  
(3 piece set)



Style 5860X

"Vital Signs"  
S, M, L, XL, 1X/2X, 3X/4X

Snap front dress with ruffled hem. Includes belt, nurse hat, stethoscope and satin bow with cross stocking clips. (Thigh highs not included)  
(6 piece set)



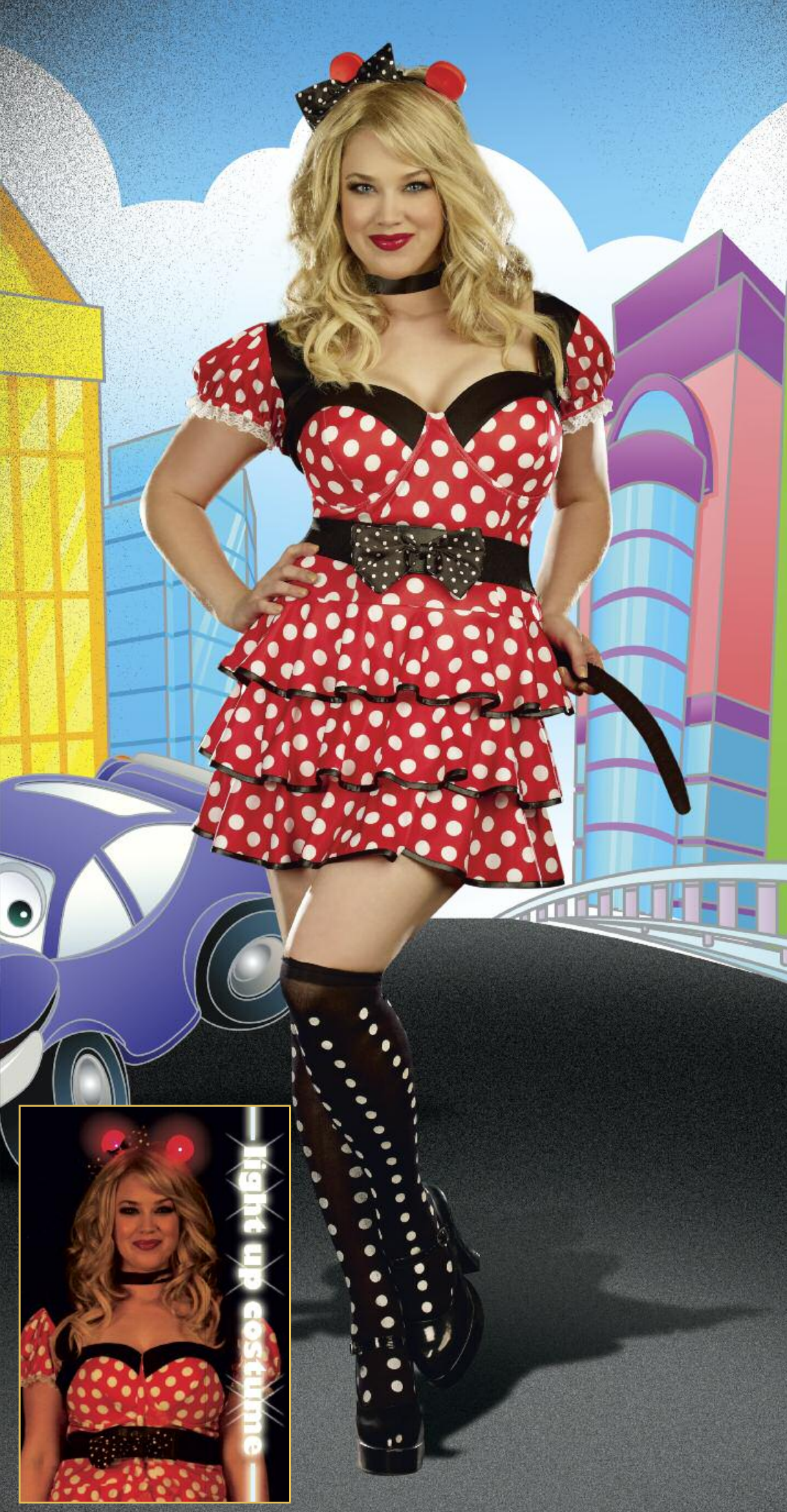
Style 6452X

"Trouble At School"  
S, M, L, XL, 1X/2X, 3X/4X

Reversible plaid Schoolgirl/Teacher pinstripe skirt with kilt pin, button front jacket and stretch knit tie front top. Includes apple pin, "Teacher Miss Ivana Youngman" name badge, hair bows and eye glasses. (Thigh highs not included)  
(8 piece set)







**Style 8791X**  
 "Miss Mouse"  
 S, M, L, XL, 1X/2X, 3X/4X

Retro polka dot dress with lightly padded underwire cups and multi ruffled hemline. Includes polka dot bow belt, mouse tail, choker, headband with matching bow and light-up mouse ears. Batteries and instructions included. (Thigh highs not included) (6 piece set)



**Style 4494X**  
 "Robyn Da Hood"  
 S, M, L, XL, 1X/2X, 3X/4X

Ruffle hem dress and faux suede waist corset. Includes hat, lace-up gauntlets and drawstring bag. (6 piece set)



**Style 4550X**  
 "Eskimo Cutie"  
 XS, S, M, L, 1X/2X, 3X/4X

Zipper front stretch crushed velvet dress with faux fur trimmed hood with pom pom ties. Includes mittens, faux fur trimmed boot covers and faux chocolate popsicle. (Petticoat not included) (4 piece set)



**Style 3760X**

"Boxer Girl"

S, M, L, 1X/2X, 3X/4X

Stretch knit underwire camisole and matching skirt with shirring details. Includes matching robe with sash tie and boxing gloves. (5 piece set)



**Style 8343X**

"Puck U"

S, M, L, XL, 1X/2X, 3X/4X

Sporty deep V-neck stretch knit jersey style dress with three quarter length sleeves, unique sequin accented front and back "Puck U" and perfect "10" details. Includes sequin hockey puck purse and mini hockey stick. (4 piece set)



Button front jersey style dress with sequin "Home Run" detail, attached adjustable belt, ruffle and sequin trimmed skirt. Includes baseball hat and hair ribbons. (Knee socks not included) (3 piece set)

**Style 8788X**

"Home Run"

S, M, L, 1X/2X, 3X/4X







**Style 8807X**

"Up in the Air"

S, M, L, XL, 1X/2X, 3X/4X

Dress with lightly padded underwire cups accented with metallic gold piping details. Includes matching shrug, neck scarf and pilot hat (4 piece set)



Microfiber dress with attached neck sash. Includes matching pilot hat and removable "Mile High Captain" badge. (3 piece set)

**Style 3523X**

"Mile High Captain"

S, M, L, 1X/2X, 3X/4X

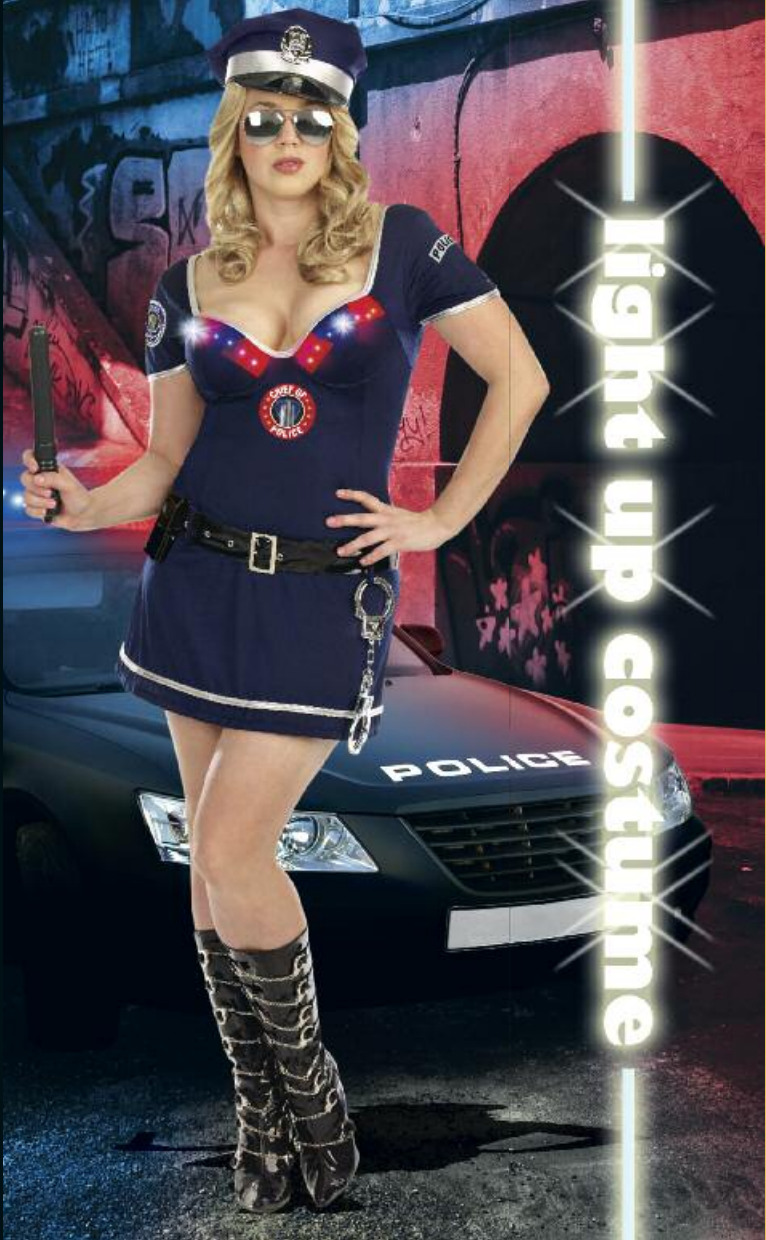


**Style 8219X**

"The Heat Is On"

S, M, L, XL, 1X/2X, 3X/4X

Stretch knit dress has flashing LED red and blue police lights in the lightly padded underwire cups. Costume includes a police siren alarm on its phone, which with the press of a button, can be set off to make the perfect entrance. Police hat with badge, belt, hidden pocket for the on/off switch, batteries and instruction sheets are also included. (Handcuffs, sunglasses and baton not included) (4 piece set)



light up costume

**Style 4005X**

"Corrupt Cop"

S, M, L, XL, 1X/2X, 3X/4X

Snap front dress with attached vinyl boned waist corset and neck collar. Includes hat, faux razor blade necklace, removable name badge, belt, handcuffs and an Evidence Bag which contains a faux needle and mini plastic bag. (9 piece set)



**Style 7669X**

"Late Night Patrol"

S, M, L, XL, 1X/2X, 3X/4X

Ruffle hem dress, waist cincher with belt and removable "Dreamgirl Police Dept." badge. Includes hat, lace-up wrist cuffs and matching drawstring bag. (6 piece set)



light up & sound effects

**Style 8214X**

"Burn Baby Burn"

S, M, L, XL, 1X/2X, 3X/4X

Sexy dress with fiber optic light up word FIRE has two way zipper and front and back screen print. Costume also includes fire alarm, which with the press of a button, can be set off to make the perfect entrance. Fire hat, hidden pocket for the on/off switch, batteries and instruction sheet are also included with this costume. (Pantyhose not included) (3 piece set)







**Style 8158X**

"Go Go Gorgeous"

S, M, L, XL, 1X/2X, 3X/4X

Stretch knit retro pattern A-line Go Go dancer dress has bell shaped long sleeves and unique shaped neckline. Includes matching retro glasses, earrings and faux vinyl daisy belt. (5 piece set)



**Style 5991X**

"Fang Bangin' Fun Vamp"

S, M, L, XL, 1X/2X, 3X/4X

Stretch knit dress with contrast burgundy scalloped edge neckline. Includes iridescent satin black/ burgundy stand-up collar removable cape with scalloped edge, adjustable straps and hooks, belt with pentagram and chain details, choker and vampire fangs (not shown). (5 piece set)



**Style 0072X**

"Basic Unitard"

Black

S/M, M/L, 1X/2X, 3X/4X

Cotton/Spandex adjustable strap unitard.





Style 8835





Lady Cat (Cat Fish Club) 製作の ebook形式のカタログは、

<http://www.ebookcat.net>

にまとめています。多数のeBookカタログをご用意していますので、是非、ご利用ください。

The images and graphics in this catalogue [or CD] are the copyright-protected work of Dreamgirl International. Any use or reproduction without the express written consent of Dreamgirl International is strictly prohibited. Violators will be prosecuted to the fullest extent of the law.

*Dreamgirl*

COPYRIGHT © MMXIII